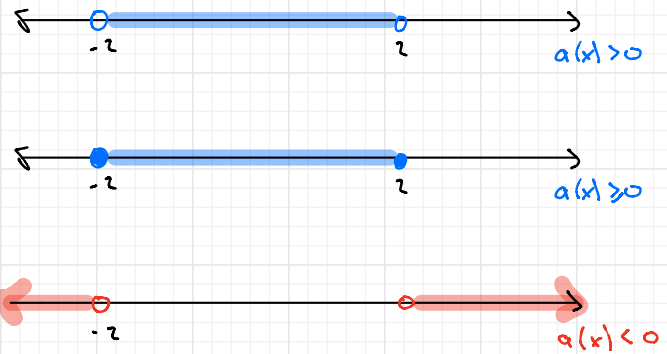
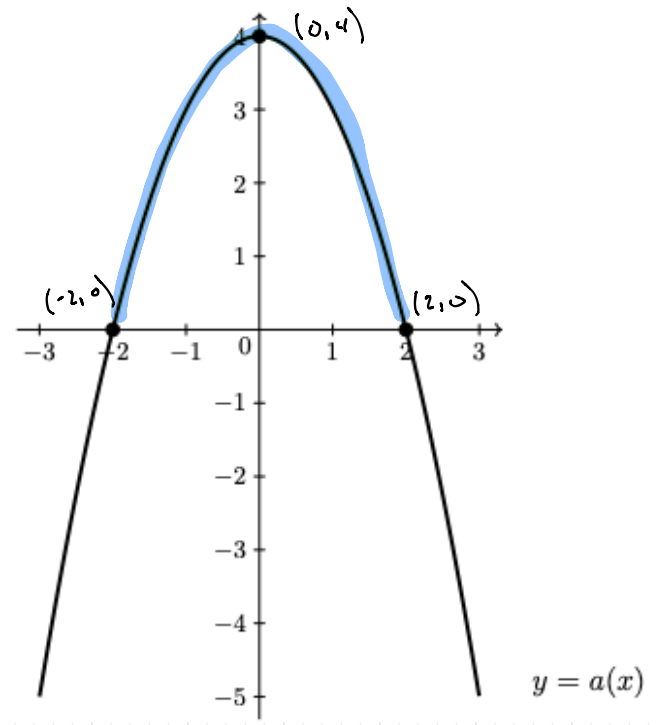
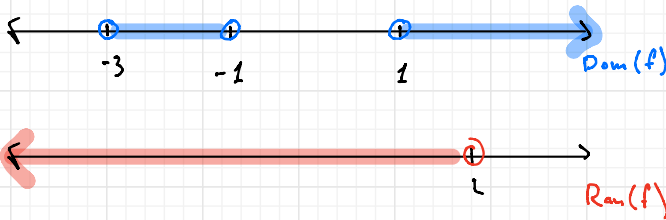
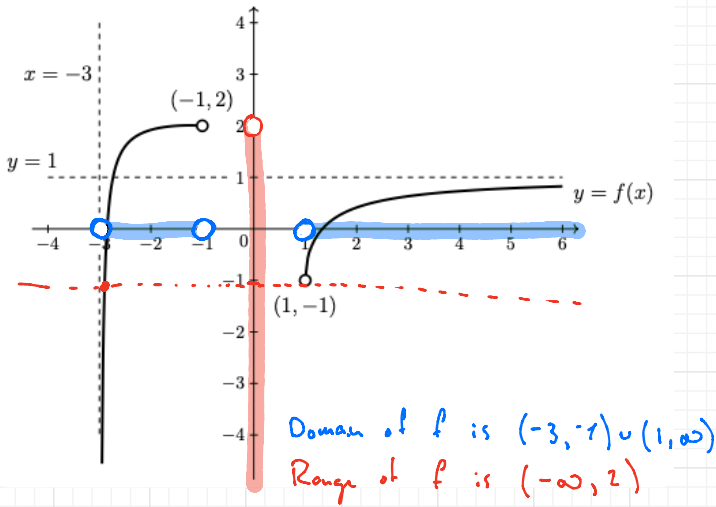
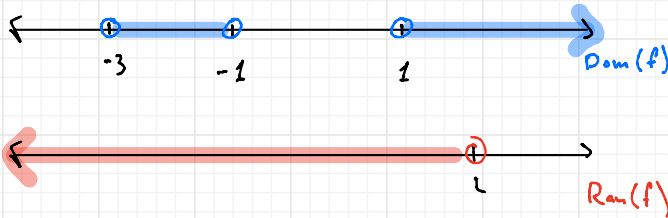


1. Discuss Worksheet 3



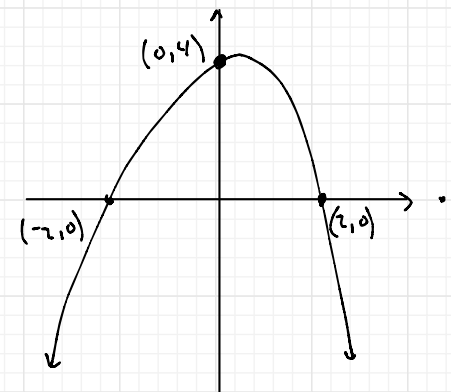
Solutions for Page 1:

The points  $-2$  and  $7$  are in the domain of  $f$ , while  $-10$  and  $0$  are not. The points  $0$  and  $\frac{1}{2}$  are in the range of  $f$  while  $47$  and  $6\pi$  are not. The graphs of the domain and range are given by



Solution to page 2:

The graph of  $a$  is given by



The graph of points such that  $a(x) > 0$  is

