

NEXCO West Japan Customer Center

Available Every Day, 24 Hours

For Inquiries on Expressway Toll and Road Traffic Information:

 **0120-924863**

*You may not use this free toll number if you call from an IP phone or some other types of phones.
Instead, please call **06-6876-9031** (chargeable call)

English guidance available from 9:00 a.m. to 5 p.m.

*Depending on the terms of your mobile phone agreement, you may not be able to call this number.

JAF Calling the JAF Road Service Road Service Telephone Number

Dialling from a telephone in Japan

#8139 or 0570-00-8139

If neither of the telephone numbers above are available, the phone number right can be used.

Dialling from your overseas mobile phone in Japan

Call Kyushu call Center **092-841-5000**

*Interpreting service is available.
*Calls are not toll-free. Also, calls cannot be made from some fixed-line phones or some IP mobile phones, etc.

If you are involved in an accident

Call the police
(110)

If you find someone injured or a vehicle on fire

Call an ambulance/fire service
(119)

Major Car Rentals

TOYOTA Rent a Car	0800-7000-815 (Toll-free within Japan) +81-3-5954-8020 (Outside Japan) 8:00 a.m. - 8:00 p.m. (Open 7 days a week) https://rent.toyota.co.jp/eng/
Budget Rent a Car	0570-054-317 (Within Japan) +81-92-735-8886 (Outside Japan) 8:00 a.m. - 8:00 p.m. (Weekdays) 9:00 a.m. - 6:00 p.m. (Weekends, Nat. Hols, and Dec. 31 - Jan. 3) https://www.budgetrentacar.co.jp/en/
Nippon Rent-A-Car	03-6859-6234 (Within Japan) +81-3-6859-6234 (Outside Japan) 9:00 a.m. - 5:00 p.m. (Open 7 days a week) https://www.nrgroup-global.com/en/
NISSAN Rent a Car	0120-00-4123 (Within Japan) +81-96-355-6752 (Outside Japan) 8:00 a.m. - 8:00 p.m. (Weekdays) 9:00 a.m. - 6:00 p.m. (Weekends and Nat. Hols) https://nissan-rentacar.com/english/
ORIX Rent-A-Car	0120-00-0543 (Within Japan) +81-92-687-8005 (Outside Japan) 8:00 a.m. - 8:00 p.m. (Open 7 days a week) http://car.orix.co.jp/eng/
Times Car RENTAL	050-3786-0056 (Within Japan) +81-50-3786-0056 (Outside Japan) 8:00 a.m. - 6:45 p.m. (Open 7 days a week, except New Year's holidays) http://www.timescar-rental.com/

Issued by

Kyushu District Transport Bureau (MLIT)

2-11-1, Hakataeki-higashi, Hakata-ku, Fukuoka 812-0013, Japan

Tel:+81-92-472-2335 Fax:+81-92-472-2334

URL:<http://www.twb.mlit.go.jp/kyushu/>

Kyushu Tourism Promotion Organization

7F Denki Bldg. Kyosokan, 2-1-82 Watanabe-dori, Chuo-ku, Fukuoka 810-0004, Japan

Tel:+81-92-751-2943 Fax:+81-92-751-2944

E-mail:qtp@welcomekyushu.jp

URL:<http://www.welcomekyushu.com/>



<Edited and supervised by>



国際交通安全学会
International Association of Traffic and Safety Sciences 訪日観光客の交通事故リスクの把握と軽減方策に対する学際的・国際的提言プロジェクト

(January 1, 2020)

Must-have Manual for Driving in Kyushu

Kyushu Rent-A-Car Drive Manual



Don't drink and drive!



Stop when you see this sign!



Obey traffic lights!

Obey the traffic rules and have a nice drive!

Traffic Rules

When in Trouble

Expressways

Gas Stations

Information

PLEASE BE CAREFUL AND OBEY TRAFFIC RULES WHEN DRIVING IN JAPAN

An increasing number of overseas tourists are getting into trouble or accidents when driving on Japan's roads. Always remember that Japan drives on the left side of the road, and to obey stop signs and traffic lights. This guide introduces some major rules that will help you avoid getting into an accident.

1 Stop when traffic lights are red!

Proceed when lights are green. Stop when lights are yellow or red.



* In the case of traffic lights with a green arrow, proceed in the direction of the arrow when it lights up while paying attention to oncoming vehicles.

See page 4

2 Stop when you see this sign!

Stop when you see the below sign at an intersection, and check all directions before proceeding.

* You should check all directions before entering intersections, even without this sign.



Japan



Korea



Hong Kong



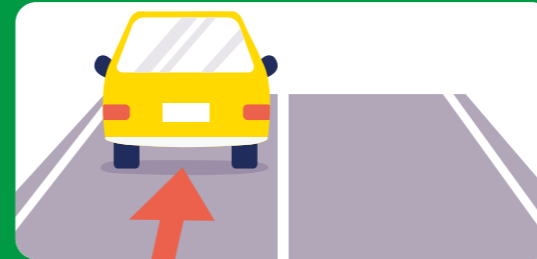
Taiwan



See page 5

3 Cars must drive on the left

Make sure you are in the correct lane after turning right or left.



See page 4

4 Obey speed limits!

Do not exceed the speed limits indicated on signs: 30 (30 km/h), 40 (40 km/h) and 50 (50 km/h). The speed limit on roads without signs is 60 km/h.

* The maximum speed limit on public roads is 60 km/h.



See page 10

5 Drive with consideration for others

Stop when you see pedestrians trying to cross roads or intersections. Drive safely, always showing consideration to pedestrians and other vehicles.



See page 6

Kyushu Rent-A-Car Drive Manual

6 Exercise caution at intersections

Obey traffic lights at intersections. Make sure to check all directions before entering intersections without traffic lights.



- 1 When turning right, oncoming vehicles have right of way.
- 2 Remember to stay in the left lane after turning right.
- 3 When turning left, check your left-hand side for bicycles or motorcycles.

See page 6

7 Do not change lanes suddenly

It is dangerous to suddenly change lanes or overtake other vehicles haphazardly. Check the surrounding road conditions to see whether it is safe and change lanes exercising due caution.



See page 7

Huh!? Fines in Japan are that expensive!?

You can be hit with a large fine even for small traffic violations. Check now to avoid trouble down the road!



CHECK!!

Don't drink and drive!

Drinking and driving is illegal! Do not drive if you have consumed even a little alcohol! If you do, you may be fined ¥500,000 or more.



Don't use a smartphone when driving!

It is against the law to drive while talking on the phone, sending messages or looking at your smartphone.



See page 10

Contact the police and your car rental company's accident assistance hotline immediately if you are involved in an accident!!

You have taken out Collision Damage Waiver (CDW) coverage, right? These schemes pay out compensation for deductibles when you are involved in an accident. However, if you fail to notify the police or your car rental company, you may not be covered by your insurance and will have to pay the repair costs. In addition, if you damage the car body or dirty the car's interior, you may be charged a Non-Operation Charge (NOC) as a part of compensation that is not covered by your insurance. Coverage varies by insurance policy, so make sure to double check the coverage content of your policy!!

See page 8

Wonderful Kyushu!

Drive safely and have a great trip!

Kyushu is a popular tourist destination, renowned especially for the magnificent natural surroundings of the Aso region in Kumamoto and hot spring resorts like Yufuin and Beppu in Oita. And there are numerous other places of interest, such as Fukuoka's Munakata Taisha Shrine, which was inscribed as UNESCO World Heritage, and Saga's Yutoku Inari Shrine, famed for its opulent construction. Also on the menu are culinary delights including ramen noodles, basashi (raw horse meat), Saga beef and Miyazaki beef. By using a rental car, you will be able to explore a wider area of the island and will have even more fun. So, drive safely and have a great trip!



Fukuoka

Munakata Taisha Shrine Map code: 68 572 360*83



This ancient shrine, which has maintained beliefs and ceremonies rooted in nature worship for over 2,000 years, was inscribed as UNESCO World Cultural Heritage.



Sakurai Futamigaura Map code: 224 788 328*62



Futamigaura is known for its beautiful sunset views, with Meoto Iwa (Wedded Rocks) located out at sea around 150 m from the beach. This famous pair of rocks is regarded as a symbol of a good match and strong bonds between couples.



Driving Information



Total travel distance **95.7km**
Travel time **2h21min**

Nagasaki

Huis Ten Bosch Map code: 307 320 596*88



One of Japan's premier resorts, a faithful recreation of a Dutch town where you can enjoy flowers, light and music throughout the year. The illuminations are particularly impressive.



Hoarfrost in Unzen Map code: 173 620 700*00



In Unzen, a popular hot spring resort area, you can see frozen mist on the branches of trees from December until February.



Driving Information



Total travel distance **207km**
Travel time **3h32min**

Saga

Yutoku Inari Shrine Map code: 461 568 367*45



One of Japan's three major inari shrines. The shrine is noted for its bright and richly-colored main building.



Arita Map code: 104 363 425*52



A town renowned for its ceramics industry, which boasts a history of four centuries. Take a stroll through its historic streets while marveling at a range of ceramic works.



Driving Information



Total travel distance **138km**
Travel time **2h18min**

Kumamoto

※ Some roads leading to Aso have been closed off due to earthquake damage. Please check in advance to see which routes are passable.

Aso Map code: 256 704 370*57



A popular area with vast and beautiful natural surroundings, centering on an active volcano. The area has many places of interest, including springs and hot springs.



Kumamoto Castle Map code: 29 489 299*30



One of Japan's most impressive castles. Visitors can no longer go into the inner bailey of the castle (honmaru) due to earthquake damage, but you can still see restoration work underway from outside the restricted area.



Driving Information



Total travel distance **151km**
Travel time **3h4min**

Oita

Yufuin Map code: 269 357 148*47



A hot spring resort town situated in an area of highland, overlooked by the impressive Mount Yufu. Highlights include the shopping street Yunotsubo Kaido, which runs through to Lake Kinrin, as well as the chance to ride on a horse-drawn carriage.



Beppu Map code: 46 405 129*47



Japan's number one hot spring town, where you will find numerous hot springs bubbling up throughout its streets. It is famous for Jigoku Meguri (Hell Tour), a series of eight weird and wonderful hot springs not to be missed.



Driving Information



Total travel distance **149km**
Travel time **2h2min**

Miyazaki

Takachiho Map code: 330 711 821*22



A mystical land steeped in Japanese mythology, where the gods are said to have descended. You will also be captivated by the area's beautiful gorge.



Nichinan Coastline Map code: 843 073 695*25



This area has many things to see, such as Aoshima Island with its interesting coastal formation called the "Ogre's Washboard," beautiful shorelines, and Udo-jingu Shrine, situated in a cave on the side of a cliff.



Driving Information



Total travel distance **336km**
Travel time **5h17min**

Kagoshima

Sakurajima Map code: 393 553 317*52



An active volcano that is the symbol of Kagoshima. You can get a spectacular view of the volcano from Mt. Shiroyama, where it appears to be floating on Kagoshima Bay.



Ibusuki Map code: 285 257 011*12



Here, you will have the rare chance to enjoy a sand bath, in which you are covered all over with sand that has been warmed by hot spring water welling up under the beach.



Driving Information



Total travel distance **326km**
Travel time **4h40min**

Pay attention! Japan's traffic signs and rules

Numerous traffic accidents in Japan are caused by certain differences between countries concerning traffic signs and driving habits/awareness. Even if something is permitted in your home country, in Japan it may be considered a traffic violation or cause a serious accident. This section introduces some differences in traffic signs and rules you need to obey.

Rules at intersections



Stop when traffic lights are red! Pay particular care when turning left

In Japan, you must always stop when traffic lights are red. You cannot turn left when lights are red, so turn only when lights are green. When turning left, check that there are no bicycles or motorcycles on the left of the lane before proceeding.



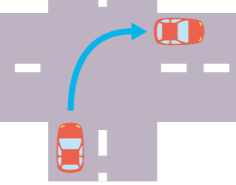
Pedestrians have right of way

Pedestrians have right of way at intersections. When turning left, ensure to stop if pedestrians are crossing. Even if you are in a hurry, you must not continue driving until all pedestrians have finished crossing.



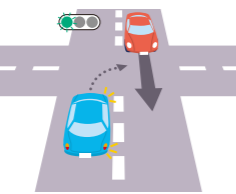
Drive on the left, even when turning right

Many accidents happen when cars accidentally cross the central line after turning right and collide head on with oncoming vehicles. Never forget that Japan drives on the left, especially when turning right!



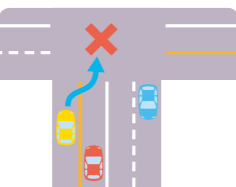
Give priority to oncoming vehicles when turning right

Even when the arrow indicating that you can turn right at traffic lights is green, wait until all oncoming traffic on the intersection has passed before proceeding. Never accelerate suddenly when turning!



Do not change lanes recklessly

Never suddenly change lanes, as this can cause a collision. You cannot change lanes at intersections if the lanes before the intersection are separated by orange lines. It is also important that you confirm your direction before reaching the intersection.



Understanding traffic lights

You can only proceed when the light is green!

Always obey traffic lights when driving in Japan. If the light turns yellow from green, this is a signal for you to stop, not accelerate and pass through.



Red light

Yellow light

*You can only proceed when lights are turning yellow if you have already gone past the stop line, or if stopping poses a danger, such as you are approaching the lights and cannot safely stop at the stop line.

At traffic lights with a green arrow

When the arrow lights up, proceed in the direction indicated by the arrow. If the arrow is not lit up, you must wait before driving, even if there are no vehicles or people in that direction. To facilitate smoother and safer right turns, some intersections introduce a system where right-turning vehicles can turn while oncoming vehicles stop at a red light. Even if you feel you are being kept waiting for a long time, wait until the light turns green and proceed calmly!



Traffic light with an arrow

Seatbelts

You are also required to wear a seatbelt in your country, right? In Japan, too, everyone in the vehicle is required to wear a seatbelt, both front and back seats. Be sure to wear a seatbelt to prevent injury in an accident. If you don't bother to wear a seatbelt, you may be ordered to pull over your car and end up getting a ticket.

Do not drink and drive

Drinking and driving is banned everywhere in the world. You will be punished severely, even if you have only had a little to drink before driving. People tend to loosen up and relax their standards while on a trip, but drinking and driving is never acceptable, as it can cause a serious accident! If you are caught drink driving, you will face a heavy fine of as much as ¥500,000 (average) or more.



Traffic sign differences



Road sections with traffic direction indicators

At intersections, you can only travel in the directions indicated by arrows. If numbers are also displayed, such as 7-8, you need to follow these directions between the hours of 7 and 8 a.m.



Stop



You must stop at intersections with this sign, even if there are no traffic lights. Failure to do so may result in an accident. Check all directions before entering the intersection.

Speed limits



Do not exceed the speed limits indicated on signs: 30 (30 km/h), 40 (40 km/h) and 50 (50 km/h). The speed limit on roads without signs is 60 km/h. Be careful not to drive too fast, as this may cause a serious accident.

No parking



You cannot park on roads with this sign. If numbers are also displayed, such as 8-20, it means you cannot park on the road between the hours of 8 a.m. and 8 p.m., but can park there at all other times.

One-way



You can only drive in the directions indicated by the arrow on roads with this sign. You will often see these signs on narrow roads in city centers, so pay attention.

Slow down



On roads with this sign, drive carefully at a speed at which you can stop immediately (5 km/h or less).

No entry



You cannot enter roads with this sign.

No parking or stopping



You cannot park or stop on roads with this sign. Even if you park for just a few minutes, you will get a ticket. If numbers are also displayed, such as 8-20, it means you cannot park or stop on the road between the hours of 8 a.m. and 8 p.m., but can park or stop there at all other times.

Railway crossing ahead



This sign indicates that there is a railway crossing ahead. Always stop in front of the crossing and check both directions before proceeding. Even if there is no sign, you must stop in front of railway crossings!

National road / prefectural road / expressway signs

Signs for national roads are an inverted triangle with a white number on a blue background. Hexagonal signs indicate prefectural roads. Expressway signs have either green letters on a white background, or white letters on a green background.

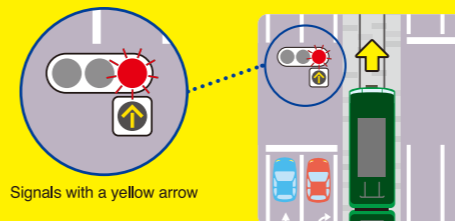


Beware of trams

In Kyushu, trams run in the following cities: Nagasaki, Kumamoto and Kagoshima. When driving in streets with tram lines, please be aware of the following three points.

Signals with a yellow arrow are for trams.

When the yellow arrow is on, automobiles are obliged to stop.



Signals with a yellow arrow

Do not drive down tram lanes.

Tram lanes are for the use of trams only. You can only cross them to turn right or make a U-turn. When doing so, exercise due caution.

Rules for stopping behind trams at tram stops

At tram stops, automobiles are obliged to stop behind the tram for the safety of passengers. However, automobiles can overtake trams if there are no passengers getting on or off. Even in these cases, you must drive slowly, leaving a distance of 1.5 m or more from the tram.

Some tram stops are in the middle of roads, so please drive with care.



In case of emergency, call the police and your car rental company's

accident assistance hotline.

It is illegal to continue driving without doing so, and you will no longer be covered by insurance.

Common types of car accidents

Many traffic accidents caused by foreign travelers are due to carelessness, misunderstanding of traffic rules or aggressive driving. This section introduces some examples of accidents that foreign travelers tend to cause. It will spoil your pleasant trip if you cause an accident. Drive carefully!



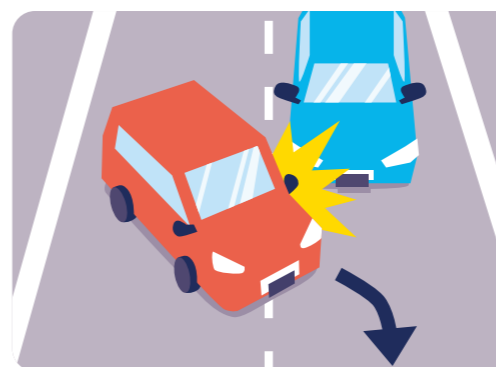
Driving for a long period of time is dangerous!

Accidents can easily occur due to tiredness, sleepiness or lack of attention. During a long drive, make sure to take occasional breaks and refresh yourself.



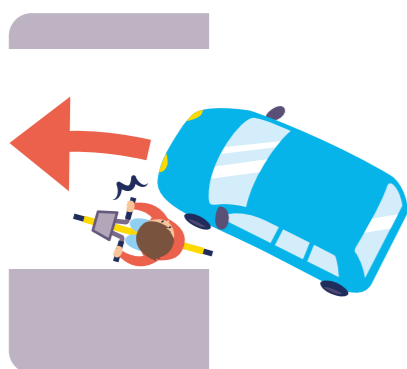
Not watching where one is driving due to use of smartphones, car navigation systems etc.

Driving while looking at a smartphone or car navigation system can cause minor and major collision accidents. Do not use smartphones while driving. Also, pedestrians or bicycles may appear suddenly from places hidden from view or around street corners. Make sure to concentrate fully when driving.



Hitting into other vehicles when changing lanes or overtaking

If you suddenly change lanes or overtake recklessly, there is a risk of causing serious accidents, including rear impact collisions and bumps with other vehicles. Never aggressively change lanes just before intersections. On roads with orange lines, both changing lanes and overtaking are prohibited. On roads where overtaking is permitted, the rule in Japan is that you should move into the right lane to overtake. However, never overtake on roads with poor visibility or on curves.



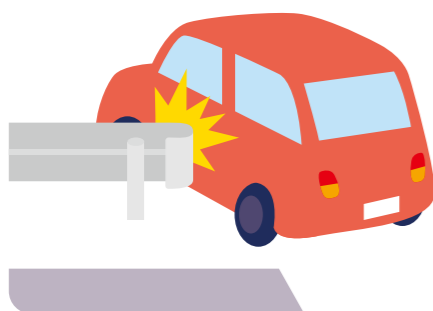
Ramming into a bicycle or motorcycle when turning left

If you do not pay enough attention when turning left, there is a risk of ramming into a bicycle or motorcycle driving on the left side of the lane. When turning left, be sure to turn on the indicator to notify vehicles, bicycles and motorcycles traveling behind, and then check the left and rear of the vehicle by sight and using the side mirror before making the turn. If you notice bicycles or motorcycles, let them pass before turning left.



Serious accidents caused by stop sign violations

If you fail to stop at intersections with poor visibility and no traffic lights, there is a danger of causing a serious accident such as a head-on collision. At such places, stop your car completely before the intersection and check in all directions carefully. Also make sure to temporarily stop at intersections with a flashing red light and at railway crossings.



Hitting guard rails when turning left

There have been a number of accidents whereby those unaccustomed to right hand drive vehicles misjudge the vehicle width and hit guard rails when turning left. When turning left, confirm the position of objects such as guard rails, telegraph poles and other obstacles, and drive carefully. Even if you scrape the car against a guard rail and continue driving because it is just a little scrape, you will be liable to pay compensation. No matter how small, always report such incidents to your car rental company!

Minor collisions often happen when parking. Drive carefully in parking lots!

In fact, accidents involving foreign travelers most often occur in parking lots. There are many cases where drivers are not paying enough attention when reversing into parking spaces, or misjudging their vehicle width and hitting the adjacent car or signboards. In parking lots, reduce your speed and constantly check the movement of surrounding cars and people, and park so that your vehicle is completely within the parking space. If you hit into something, do not leave the spot, even if it is a small collision, and contact your car rental company.



In case of emergency, call the police and your car rental company's accident assistance hotline.

It is illegal to continue driving without doing so, and you will no longer be covered by insurance.

If you are involved in an accident or your car breaks down...

If you are involved in an accident or your car breaks down while out driving, begin by making sure you are safe and calling the police. Then, contact your car rental company's accident assistance hotline straightaway. You will then be given instructions on what to do next, so please keep calm and follow the instructions you are given. You will no longer be covered by insurance if you fail to contact your car rental company and continue driving in a damaged vehicle.



Ensure your safety to prevent secondary damage from occurring

If you are involved in an accident or your car breaks down, stop your vehicle immediately and, if it is still drivable, move it to a safe location, such as the roadside, and wait in a safe place. If anyone is injured, call 119 for an ambulance. If you are driving on an expressway, make sure to get out of the vehicle and wait in a safe place.



Contact the police and your car rental company

First, call the police and explain that you have been involved in an accident. Then, contact your car rental company's accident assistance hotline and explain the situation. You will then be given instructions on what to do next. You are obliged to contact your car rental company even if you hit something like a telegraph pole or a guard rail. No matter how small the impact, if you continue to drive without contacting your car rental company, you will no longer be covered by insurance.



Wait for the police to arrive and report the accident

Once the police arrive, tell them about the circumstances surrounding the accident in as much detail as possible, and complete procedures to receive an accident certificate. You will not be covered by insurance without this certificate and may have to cover the full cost of compensation for damages by yourself.



If you cannot drive the vehicle, wait for roadside assistance

If you have no choice but to call for roadside assistance, use an operator specified by your car rental company. If you use a different operator, you may be liable for the full amount, so check carefully!

Are you aware of the following two systems?



CDW (Collision Damage Waiver)

Schemes which pay out compensation for deductibles when you are involved in an accident

Basic insurance coverage is included in the basic car rental fee, so in the event you are involved in an accident, you will be covered by insurance. However, when you claim under your insurance policy, you will still have to cover deductibles by yourself (the amount depends on the type of car, but somewhere in the region of ¥100,000 - ¥200,000). If you pay an extra fee for a CDW scheme, you will be covered for deductibles. CDW schemes are optional, but you will gain added peace of mind by taking out CDW coverage in advance!

NOC (Non-Operation Charge)

Compensation levied on the user if the vehicle is damaged
Be careful, as this is not covered by insurance!

This is a form of compensation you pay to the car rental company in the event you damage the car body or dirty the car's interior. It is not covered by insurance, and in addition to damage caused by an accident or breakdown, you will also be charged for such things as scratches to the car's bumper, damage to in-car equipment like the car navigation system, and stains on car seats. You are recommended to pay an additional fee in advance for NOC coverage.



Coverage varies by insurance policy, so make sure to double check the coverage content of your policy.



You will not be covered by insurance for accidents that involve a violation! You will be liable to pay a large sum of money out of your own pocket!

In the following cases, you will no longer be able to claim under your insurance and will have to pay the full amount of damages.

If you fail to notify the police and have not received an accident certificate

If you are involved in an accident and continue driving without notifying your car rental company

If a person who has not applied for insurance at the time of departure is driving and is involved in an accident or breaks down

Accidents involving a violation such as drink driving or driving without a license



In case of emergency, call the police and your car rental company's

accident assistance hotline.

It is illegal to continue driving without doing so, and you will no longer be covered by insurance.

Traffic violations will cost you more than you think!



You will have to pay a penalty or fine for traffic violations. You will be punished for even comparatively minor infractions, and pleading ignorance because you are a foreigner will not work. This section introduces some of the most common traffic violations along with the penalties or fines you will have to pay for these.

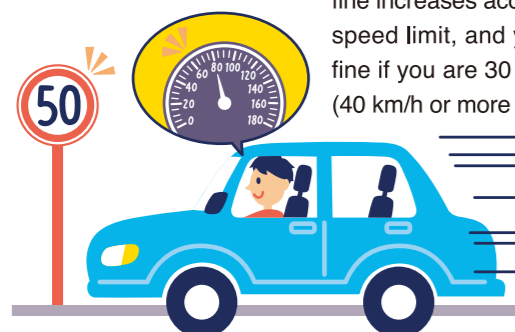
Not stopping at a designated stop sign or at a railway crossing



You are required by law to stop at stop signs or in front of railway crossings. Japan takes a tough stance against those who fail to obey stop signs, as they risk causing a serious accident. Also, make sure to stop in front of railway crossings, even if there is no sign of a train approaching.

Stop sign violation	Failure to stop at a railway crossing
¥ 7,000	¥ 9,000

Speeding



The speed limit on regular roads without signs is 60 km/h; on expressways, it is 100 km/h. The size of the fine increases according to the extent you are over the speed limit, and you will be hit with an even heavier fine if you are 30 km/h or more above the speed limit (40 km/h or more in the case of expressways).

Regular roads/expressways	Expressways^{*1}
Under 15 km/h: ¥ 9,000	Between 30 km/h and less than 35 km/h: ¥ 25,000
	Between 35 km/h and less than 40 km/h: ¥ 35,000
	40 km/h or more: Speeding fine may cost you as much as ¥ 100,000!

^{*1}The stated fine amounts are for standard size cars. Different fines apply for large vehicles, motorcycles, small motor vehicles, etc.

Parking violation



In Japan, parking violations are monitored stringently, especially in tourist areas or areas where many people park illegally. Here, police or civilian parking inspectors monitor vehicles and issue yellow parking tickets to offenders. Even stopping only for a few minutes to buy something at a convenience store or take photos, for example, will not be overlooked. When you leave your vehicle, make sure to use a parking space.

Parking violations
¥ 10,000 or more



▲ Parking Violation Notice

Using a smartphone, earphones or headset while driving

It is against the law to drive while talking on the phone, sending messages or looking at your smartphone. Never do such acts, as these are considered extremely dangerous. If you really need to use your phone, please pull over in a safe place where parking is not prohibited. The use of headsets or earphones is also a violation in some prefectures. Driving while listening to music at a loud volume is also an offense.



Using a smartphone
¥ 6,000
Using a headset or earphones^{*2}
¥ 5,000

^{*2} Differs by prefecture. Prohibited in Kumamoto Prefecture. Use at a loud volume regarded as a traffic violation in Fukuoka Prefecture.

Not wearing a seatbelt

When driving, everyone in the car, including the driver and all passengers, is required to wear a seatbelt. Failure to ensure this could result in punishment.



Seatbelt violation
There is no fine for not wearing a seatbelt, but you will receive a violation ticket. In the case of some car rental companies, you will no longer be covered by insurance in the event you are involved in an accident without wearing a seatbelt.

Drinking and driving

Drinking and driving is a crime throughout the world. Japan is particularly strict, where even driving after having consumed a little alcohol is prohibited. Furthermore, passengers who encourage the driver to drink or let the driver drive knowing that he or she has been drinking also face punishment.



Driving under the influence	Drunk driving
A fine of as much as ¥500,000!	A fine of as much as ¥1,000,000!
Penalties for passengers/those who serve alcohol to the driver and encourage its consumption	
Driving under the influence	Drunk driving
A fine of as much as ¥300,000!	A fine of as much as ¥500,000!



Deal with tickets for traffic violations promptly. Return home without paying and face an even larger fine!

If you are issued with a ticket for traffic violations, contact your car rental company straightaway and follow the instructions given. You will have to pay a fine, so please follow the set procedures and pay by the stipulated date. If you fail to pay by the deadline, you will have to pay an overdue fee, which will make your fine even higher.

If you are involved in an accident while driving under the influence or without a license, you will not be covered by insurance. Never drink and drive, or drive without a license!



In case of emergency, call the police and your car rental company's accident assistance hotline. It is illegal to continue driving without doing so, and you will no longer be covered by insurance.

How to use expressways

If you use expressways, you will be able to visit many more places and travel in comfort. However, there is also the risk of being involved in a serious accident. Obey Japan's speed limit on expressways, which is a maximum of 100 km/h, and do not overtake other vehicles recklessly. In addition, drive carefully when in the vicinity of ETC gates, located at the entrances and exits of expressways, as these are hotspots for accidents and other trouble.

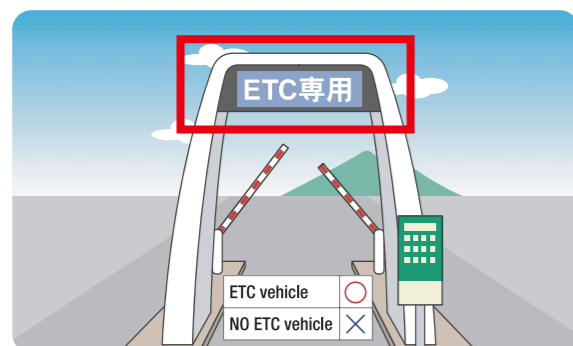


Reduce your speed to 20 km/h or less when entering ETC gates

ETC is a system that allows you to pass through gates without having to deal with tickets or money. There are signs indicating ETC gates at expressway entrances and in front of toll booths, so promptly decide on a gate, change lanes and proceed to the gate. As the bar opens and closes slowly, make sure to reduce your speed to 20 km/h or under. Ensure you leave sufficient space between the vehicle in front and never change lanes directly in front of gates. You cannot use gates in the event the signal above the gate is red.

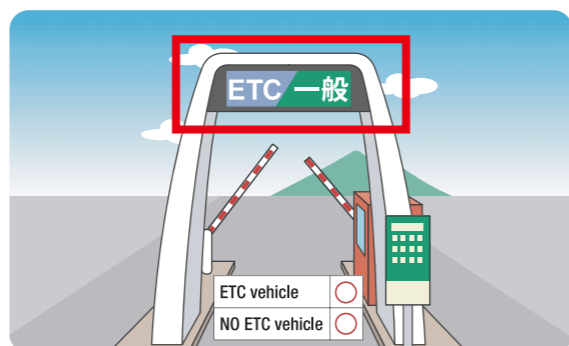
There are two types of ETC gate

ETC-only lane (ETC 専用)



The system detects when a vehicle is in the lane and the bar opens. Pass through the gate only after you are sure the bar has opened. Ensure to reduce your speed, and do not brake suddenly just in front of the bar, as this risks causing a collision!

Joint lane for vehicles without ETC (ETC/一般)



Lanes with a green sign displaying "General (一般)" can also be used by vehicles without ETC devices. Vehicles without ETC must stop once to receive a ticket or pay money. This poses the risk of a collision, so pay attention to the vehicle in front's movement and maintain sufficient space.

If the bar does not open



Never reverse your car!

If you do, the vehicle behind may collide into the back of your car.



Never get out of your car!

It is extremely dangerous to get out of your car and walk in lanes or on the expressway. Never leave your car, even if the bar does not open.

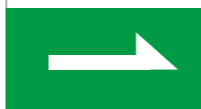


Call a member of staff on the interphone

Interphones are situated in ETC lanes, so please call a member of staff and follow the instructions you are given.

Expressway signs are displayed in green

九州自動車道
KYUSHU EXPWY



Entrance sign

Follow this sign to enter an expressway. It displays the route name for the expressway along with the direction of the nearest entrance.

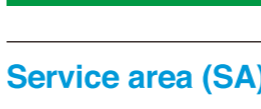
本線
EXPWY



Entrance to main road from service area or parking area

This sign indicates the direction in which vehicles enter the main road from a service area or parking area. Please make sure to check the direction in which to drive when departing from these areas, as there are an increasing number of accidents caused by people mistakenly driving in the wrong direction.

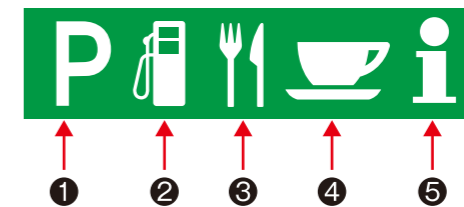
料金所1km
TOLL GATE



Toll both

This sign indicates that there is a toll booth 1 km ahead. When you see this sign before your exit, switch to the left-hand lane well in advance.

Service area (SA) / parking area (PA) sign



- 1 Parking lot
- 2 Gasoline station
- 3 Restaurants/shops
- 4 Vending machines or light meals
- 5 Provision of expressway information

Knife and fork or gasoline station symbols indicate service areas, which provide facilities and services where you can take a rest, such as toilets and restaurants, as well as a gasoline station. There are two main kinds of parking area: when you see a coffee cup symbol, it indicates a parking area with toilets, facilities where you can eat a light meal, vending machines, etc., while a "P" symbol only indicates a parking area with toilets, vending machines, etc.

Etiquette and rules at service areas and parking areas



How to use toilets

Please make sure to flush used toilet paper. Dispose of other waste in the sanitary waste receptacle located within the toilet – do not flush it down the toilet!



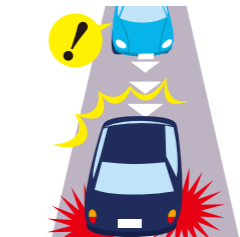
Parking spaces

Do not use spaces for large vehicles or disabled spaces unless there is a disabled person travelling in your vehicle. Also, watch out for pedestrians in parking spaces and drive slowly.



Smoke only in designated areas

In Japan, smoking is restricted to designated smoking areas, and smoking is prohibited in restaurants and shops, as well as roads outside these designated smoking areas and in toilets. Please make sure to use designated areas when you smoke.



Take care not to drive in the wrong direction when rejoining the expressway!

There are an increasing number of accidents caused by people mistakenly driving in the wrong direction when rejoining the expressway from service areas or parking areas. Driving in the wrong direction is extremely dangerous! When leaving a parking area, make sure to check the sign indicating the motorway entrance.



In case of emergency, call the police and your car rental company's

accident assistance hotline.

It is illegal to continue driving without doing so, and you will no longer be covered by insurance.

If you get into trouble on the expressway

Different types of dangers exist on expressways than normal roads. If you are involved in an accident or break down, it is essential that you first ensure your safety and act calmly. This section introduces things you should or should not do in the event you get into trouble on the expressway.

1 Never brake suddenly or turn the steering wheel sharply, even if you notice something wrong with your car!



If you notice something wrong with your car, like a puncture or breakdown, it is extremely dangerous to brake suddenly. Also, if you turn the steering wheel sharply to avoid a hazard, you risk causing a multiple-car pileup.

2 Turn on your hazard lights and pull over to the road shoulder



In order to prevent a collision, turn on your hazard lights and gradually reduce speed. Wherever possible, move over to the road shoulder or an emergency parking area.

Don't stay in your car!



Don't stand on the road!



Wait in a safe place!



3 Ensure your safety



Place a warning triangle 50 m behind your car taking care to avoid approaching vehicles, and find a safe place to wait with all passengers. Make sure to stay away from your car, as many fatal accidents are caused by people waiting inside/next to their car or on the road, and being hit by vehicles approaching from behind.

4 Report the incident and wait for instructions



In the case of an accident, call 119 if anyone is injured, then 110. After this, contact your car rental company and wait for instructions. If your car breaks down and does not move, report it by calling 110, or by using an emergency telephone or road emergency dial #9910, and then contact your car rental company.

How to use an emergency telephone

Use an emergency telephone if you are unable to get through on a cell phone. These are located about every 1 km along expressways (about every 200 m in the case of tunnels).



1. Open the phone cabinet door

To connect with the Traffic Control Center, all you need to do is open the phone cabinet door and lift the receiver.



2. Explain the situation

If there are buttons indicating breakdown (故障), accident (事故), emergency (救急) or fire (火災), press the applicable button. For phones without these buttons, just lifting up the receiver will be enough to inform the center of your location.



3. Wait for instructions

A traffic management team will be dispatched promptly to where you are. Please wait in a safe place until they arrive.

Photos: Provided by NEXCO-West

If you are involved in an accident

Call **110** (police)



If people are injured or your vehicle is on fire

Call **119** (ambulance / fire service)



Trouble on the expressway

Call **0120-924863** (NEXCO)



In case of emergency, call the police and your car rental company's accident assistance hotline.

It is illegal to continue driving without doing so, and you will no longer be covered by insurance.

How to use gasoline stations

There are three kinds of gasoline station: full-service stations where members of staff serve you, self-service stations, and stations that combine both. There are three kinds of fuel: high octane, regular and diesel. Please be careful, as your car may break down if you accidentally fill it with diesel.

Confirm the type of fuel your rental car takes

English	Taiwan	Hong Kong	Japan
Ultimate unleaded	98無鉛汽油	高級汽油	ハイオク (HA-I-O-KU)
Unleaded	92無鉛汽油	普通汽油	レギュラー (RE-GYU-RA-A)
Diesel	柴油	柴油	軽油 (KE-I-YU)

Most rental cars take regular gasoline. Diesel can only be used in diesel engines, so never fill your car with diesel. To prevent refueling with the wrong type of fuel, the refueling nozzles at gasoline stations are color-coded as shown on the right.



Don't refuel your car with diesel!
Your car may break down and it is dangerous.
And you may be asked to pay compensation later.



How to distinguish between full-service and self-service stations



Self-service stations display the word "SELF (セルフ)" in large letters at the entrance to the gasoline station or on a sign. If you do not see this sign, it is a full-service station. Full-service stations give you more peace of mind, as staff members do everything for you, from guiding you into the station to filling up and checking the air pressure of your tires. Placing orders will be easier than you think if you know a few simple phrases in Japanese.



Essential Japanese phrases for gasoline stations

レギュラー満タン!
regyuraa mantan
Fill up with regular, please!

レギュラー10! (または20、30)
regyuraa ju!(niju,sanju)
10 liters of regular, please! (Or 20, 30)

支払いは現金
Shiharai wa genkin
Pay in cash

支払いはカード
Shiharai wa kādo
Pay by credit card



Major gas station chains



Shell



IDEMITSU



ENEOS



Esso



Mobil



General
(ゼネラル)



COSMO

How to use self-service stations

1 Stop your car next to a fuel dispenser in line with the car's fuel filler opening

Slowly drive down the refueling lane and stop next to a fuel dispenser. Make sure to turn off the engine. Naked flames are prohibited within the gasoline station. Smoking is strictly prohibited.



2 Select a payment method

Follow the instructions on the touch panel and choose to pay either by credit card or cash. If you choose credit card, insert your card in the card slot; if you choose cash, insert banknotes into the banknote slot.



3 Select your type of fuel

Choose regular (red nozzle). Your car may break down if you accidentally refuel it with diesel.



Touch panel

The different types of fuel are color-coded on the touch panel. Choose red for regular.



4 Choose the amount of fuel

Specify the amount of gasoline you require on the touch panel. You can specify the amount you want in terms of fuel volume or amount of money, e.g. ¥1,000, ¥2,000 etc. You can also choose to fill the tank up.



Static electricity removal

In order to prevent the risk of fire from static electricity sparks, make sure to touch the static electricity removal pad before refueling.



5 Refueling

Open the fuel cap, pull out the red nozzle holding it tightly, insert it into the fuel filler opening, and squeeze the lever. Refueling will then begin. Refueling will automatically stop once your tank is full or you have reached your specified volume/monetary amount.

If in doubt, call a member of staff

Self-service stations are always staffed. If you are unsure of anything, call a member of staff.



6 Return the nozzle to its original position and close the fuel cap

When refueling has finished, return the nozzle to its original position and close the fuel cap and cover.

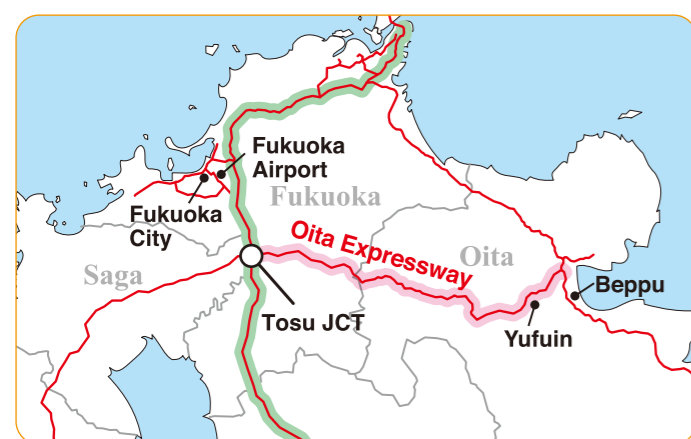


In case of emergency, call the police and your car rental company's accident assistance hotline.

It is illegal to continue driving without doing so, and you will no longer be covered by insurance.

Take care when travelling to and from the popular areas of Yufuin and Beppu! There are many incidents of sudden braking and speeding on the Oita Expressway!

The Oita Expressway is a convenient route to travel to highland resorts and the popular hot spring towns of Yufuin and Beppu. However, there are many slopes and curves on this expressway, and some sections are accident hotspots. Please take extra care when travelling in the direction of Oita.



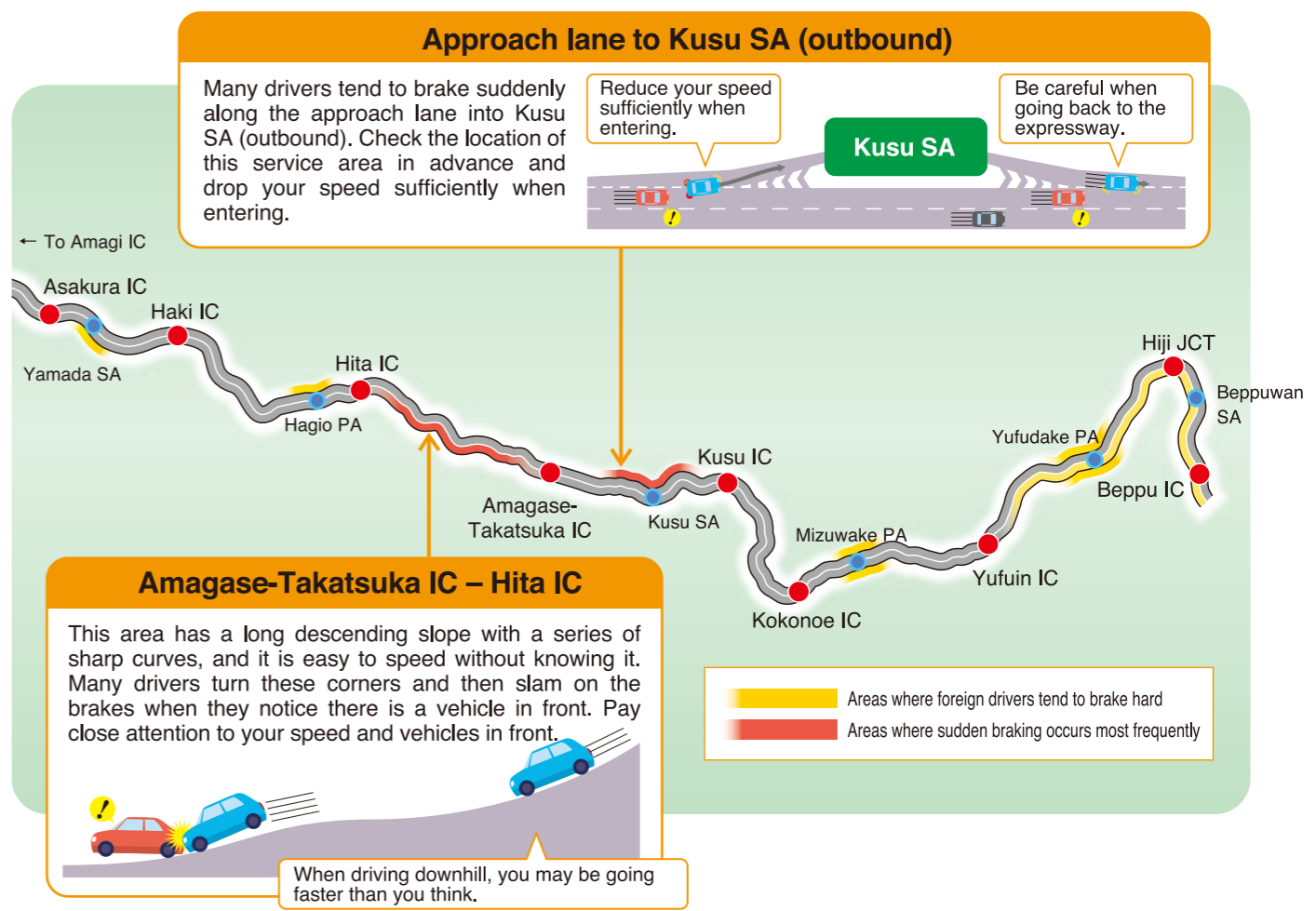
Where is the Oita Expressway?

If you are going to the Kuju Highlands, Yufuin or Beppu, you will most likely use this route. It is a convenient expressway stretching from Tosu Junction to Oita City. However, as this expressway passes through mountainous areas at a high elevation, the weather often changes suddenly, and in some seasons, it may be subject to speed restrictions and road closures due to dense fog or snow. Make sure to check the road conditions before you set out.

Areas where people tend to speed

The area between Amagi IC and Asakura IC is flat with good visibility, so drivers tend to speed there. The maximum speed limit from Haki to Oita is 80 km/h, and 100 km/h in other no-sign areas. Make sure to stick to the legal speed limits.

Dangerous spots along the Oita Expressway (sudden braking)



Frequent restrictions are in place between Hita and Beppu due to dense fog

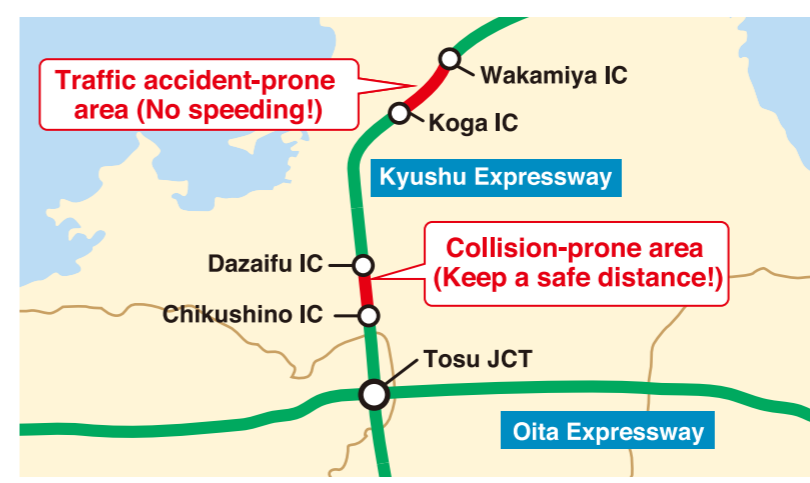


Be careful of snow during winter!

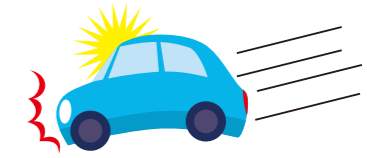
The area between Hita and Beppu is prone to fog, so speed restrictions and road closures are often put in place due to dense fog. If you are caught up in fog while driving, drive carefully, maintaining sufficient distance between the vehicle in front. Also, it sometimes snows during winter in Kyushu, and there is the risk of accidents occurring due to poor visibility and frozen roads. If you use the Oita Expressway during winter, check the road conditions in advance and drive carefully. In some cases, you may be required to put chains on your car's tires, so please inquire with your car rental company if you are planning to drive along the Oita Expressway during winter.

Photos: Provided by NEXCO-West

Other dangerous spots outside the Oita Expressway



In addition to steep slopes, there are a series of winding roads in the area between Wakamiya IC and Koga IC. Please watch your speed when driving here. Many collisions occur in the area between Chikushino IC and Dazaifu IC, so please maintain sufficient distance between the vehicle in front when driving.



In case of emergency, call the police and your car rental company's accident assistance hotline. It is illegal to continue driving without doing so, and you will no longer be covered by insurance.

In case of emergency, contact your car rental company's accident assistance hotline.

Check the contact details when renting a car.



If you are involved in an accident or your car breaks down while driving, make sure to contact your car rental company's accident assistance hotline. You are obliged to contact the police if you are involved in an accident, and contacting your car rental company is a condition for insurance coverage. You will no longer be covered by insurance if you continue driving without contacting your car rental company, and will be liable to pay any compensation or repair costs. By contacting your car rental company, you will receive advice on what to do with the damaged car and subsequent procedures, which will make things easier for you later on. To have a comfortable and safe trip, it is important that you check your car rental company's contact details in advance.

- If you are involved in an accident
Call **110** (police)
- If anyone is injured or your vehicle is on fire
Call **119** (ambulance/fire service)
- Trouble on expressway
Call road emergency dial **#9910** or **0120-924863** (NEXCO)
- Key locked in car/car trouble
Contact your car rental company's contracted roadside service operator



Be careful when driving on icy roads in mountainous areas!

It sometimes snows during winter in Kyushu, and you need to be particularly careful when driving in mountainous areas, as the roads freeze and cause your car to skid. If you plan to go to a mountainous area during winter, prepare studless tires or chains in advance. Please ask your car rental company for more details.



Icy roads are really slippery

Surface	Approx. Stopping Distance
Dry pavement	Approx. 10 m
Compacted-snow road	Approx. 35 m
Frozen roads (Eisbahn)	Approx. 112 m

Snowy and icy roads are very slippery, causing unexpected movements that may lead to crashing into guard rails or other vehicles. You need more time to come to a stop after applying the brakes, and it is said that you will need 3 to 10 times as much stopping distance compared with regular road conditions. Drive slowly along snowy or icy roads, and never turn the steering wheel sharply or brake suddenly. Also, maintain sufficient distance between the vehicle in front.

Road signs in Japan

Maximum speed limit	Stop	Slow down	Only designated directions permitted
Closed to all vehicles	Road closed	Closed to motor vehicles	No parking
No U-turn	No crossing	No passing to the right	One way traffic
Center line	Throughway	Stoptline	Parking permitted

What is "Kyushu Expressway Pass"?

As of the 1st December 2019, the following prices will be implemented throughout the year.

Use "KEP" to drive most expressways in Kyushu for one flat rate (Not including Urban Expressway and others)



Period	Price
2-day	3,600 yen
3-day	4,600 yen
4-day	5,600 yen
5-day	6,600 yen
6-day	7,600 yen
7-day	8,700 yen
8-day	9,700 yen
9-day	10,700 yen
10-day	11,700 yen

★ Notice Toll roads not included in KEP

Fukuoka	★1 Nishi-Kyushu Expwy. (Fukuoka-Maebaru Toll Road)	Nagasaki	★9 Nagasaki Megami Ohashi Toll Road
	★2 Fukuoka Urban Expwy.		★10 Saikai Pearl Line
	★3 Kitakyushu Urban Expwy.	Kumamoto	★11 Asozan Koen Road
Saga	★4 Kyuragi-Taku Toll Road		★12 Matsushima Toll Road
	★5 Higashisefuri Tunnel	Oita	★13 Kuju Kogen Road Park
	★6 Mitsuse Tunnel	Miyazaki	★14 Hitotsuba Toll Road
Nagasaki	★7 Nagasaki-Dejima Road	Kagoshima	★15 Ibusuki Sky Line
	★8 Kawahira Toll Road		