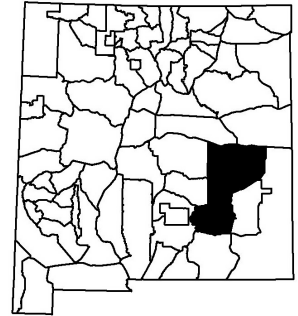
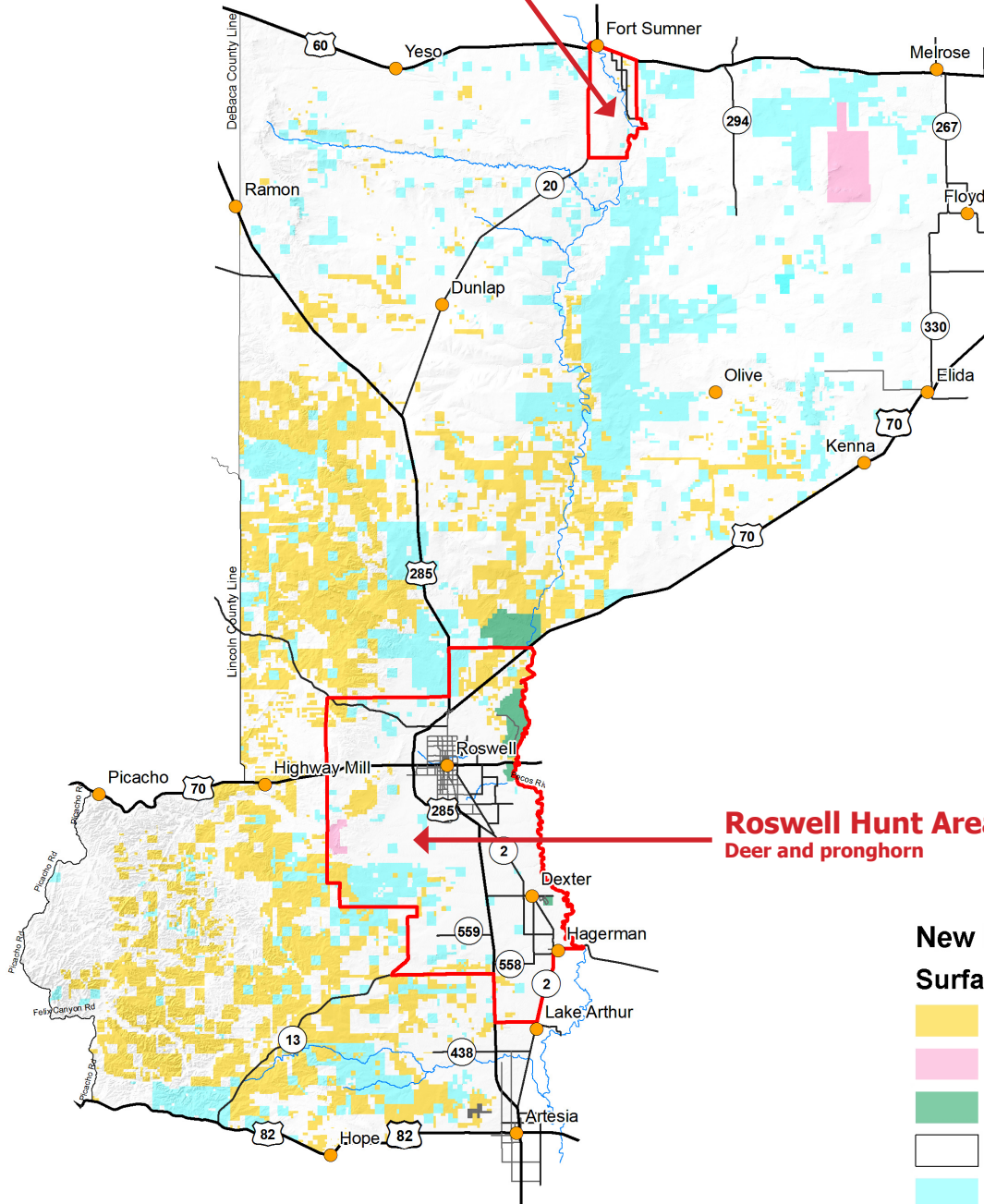




# Game Management Unit 32



## Fort Sumner Hunt Area Deer only



## Roswell Hunt Area Deer and pronghorn

### New Mexico Surface Ownership

- Bureau of Land Management
- Dept. of Defense
- Fish & Wildlife Service
- Private
- State

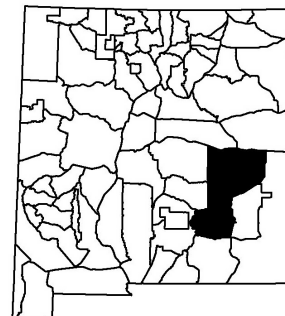
**GMU 32:** Beginning at the intersection of US 380 and the east boundary of Lincoln County and running north along the east boundary of Lincoln County to the west boundary of De Baca County, then north along the west boundary of De Baca County to its intersection with US 60, then east along US 60 to its junction with NM 267 east of Melrose, then south along NM 267 to its junction with NM 330 west of Floyd, then south along NM 330 to its junction with US 70 at Elida, then southwest along US 70 to its intersection with the Pecos River, then south along the Pecos River to its intersection with NM 249 at Hagerman, then west along NM 249 to its junction with NM 2, then south along NM 2 to its intersection with US 285, north of Artesia, then south on US 285 to its intersection with US 82 at Artesia, then west along US 82 to its junction with Chaves County Road C433, near mile marker 60, then north along CR C433 to its intersection with CR C437, near Flying H, then west along CR C437 to its intersection with CR C434, then north along CR C434 to its intersection with Lincoln County Road E030, then north and northeast along CR E030 to its intersection with CR E028, then north along CR E028 to its junction with US 380 about a mile west of Picacho, then east along US 380 to its intersection with the east boundary of Lincoln County.

### Maps for GMU 32

**BLM Maps:** Alamogordo Quad, Artesia Quad, Clovis Quad, Elida Quad, Fort Sumner Quad, Roswell Quad, Ruidoso Quad, and Salt Creek Quad. These and other maps may be found at NM Public Lands Information Center, (877) 851-8946, or visit <http://plicmapcenter.org/NM/>.



## Game Management Unit 32



### Boundary Description of Special Hunt Areas Within Unit 32

**Fort Sumner Hunt Area of Unit 32:** Beginning at the intersection of NM state highway 20 and US highway 60, then running south along NM state highway 20 to its junction with Tumbleweed road, then south along Tumbleweed road to its junction with Lone Wolf road, then east along Lone Wolf road to the southwest corner of section 16 of T1N, R26E, then east along the south section lines of sections 16 and 15 of T1N, R26E to the Pecos river, then north along the Pecos river to the southern section line of section 36 of T2N, R26E, then east along the southern section line of section 36 of T2N, R26E to James Spring road, then north and west along James Spring road to the southeast corner of section 26 of T2N, R26E, then north along the east section lines of sections 26, 23, 14, 11 and 2 of T2N, R26E, and sections 35 and 26 of T3N, R26E to US highway 60, then west along US highway 60 to its junction with NM state highway 20.

**Roswell Hunt Area of Unit 32:** Beginning at the intersection of US highway 285 and NM state highway 557, then east along NM state highway 557 to its junction with NM state highway 2, then north along NM state highway 2 to its junction with NM state highway 249, then east along NM state highway 249 to the Pecos river, then north along the Pecos river to the north section line of section 2 of T9S, R25E, then west along the north township lines of T9S, R25E and T9S, R24E to US highway 285, then south along US highway 285 to the northeast corner of section 32 of T9S, R24E, then west along the north section lines of sections 32 and 31 of T9S, R24E, sections 36, 35, 34, 33, 32 and 31 of T9S, R23E, and sections 36, 35, 34 and 33 of T9S, R22E, then south along the west section lines of section 33 of T9S, R22E, sections 4, 9, 16, 21, 28 and 33 of T10S, R22E, sections 4, 9, 16, 21, 28 and 33 of T11S, R22E, sections 4, 9, 16, 21, 28 and 33 of T12S, R22E, then east along the south section lines of sections 33 and 34 of T12S, R22E to the northwest corner of section 1 of T13S, R22E, then south along the west section lines of sections 1, 12, and 13 of T13S, R22E, then east along the south section lines of section 13 of T13S, R22E, sections 18, 17, 16, 15, 14 and 13 of T13S, R23E and section 18 of T13S, R24E to Old YO Crossing road, then south and west along Old YO Crossing road to its junction with NM state highway 13, then east along NM state highway 13 to its junction with US highway 285, then south along US highway 285 to its junction with NM state highway 557.