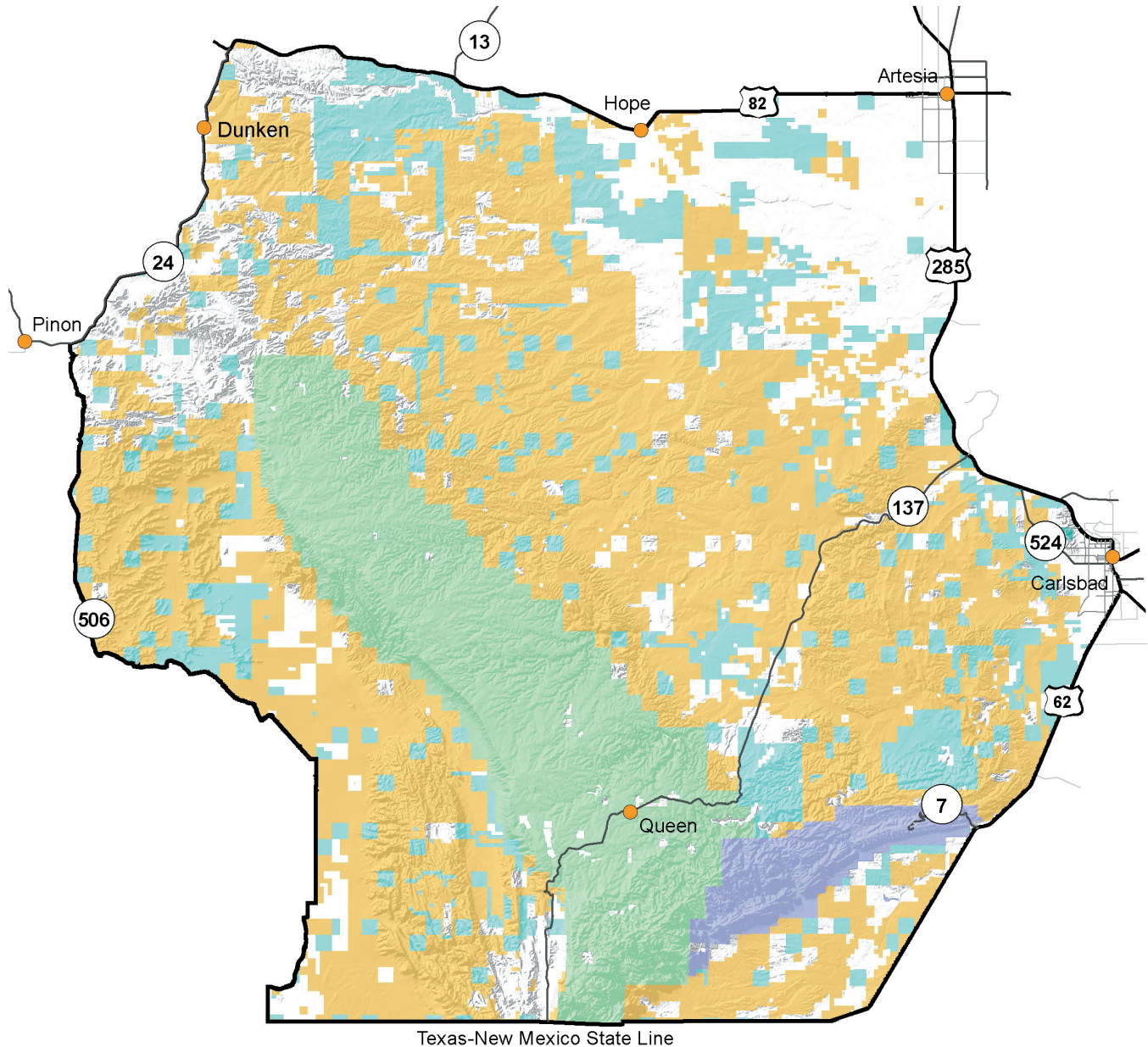
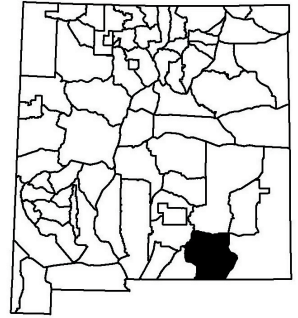




Providing New Mexico  
and its wildlife

**Year-round  
Excellent  
Services**

# Game Management Unit 30



**GMU 30:** Beginning at the NM/TX state line near Dell City, Texas, and its intersection with NM 506/CR E038, then northeast, north, west and north along NM 506/CR E038 through Crow Flats and Cornucopia Draw to its junction with NM 24 east of Pinon, then northeast along NM 24 to its junction with US 82 north of Dunken, then east along US 82 to its intersection with US 285 at Artesia, then south and southeast along US 285 to its junction with US 180 at Carlsbad, then south along US 180 to its intersection with the NM/TX state line, then west along the state line to its intersection with NM 506/CR E038.

#### Maps for GMU 30

**BLM Maps:** Alamogordo Quad, Artesia Quad, Carlsbad Quad, and Crow Flats Quad.

**US Forest Service Maps:** Lincoln National Forest, Guadalupe District

These and other maps may be found at NM Public Lands Information Center, (877) 851-8946, or visit <http://plimapcenter.org/NM/>.