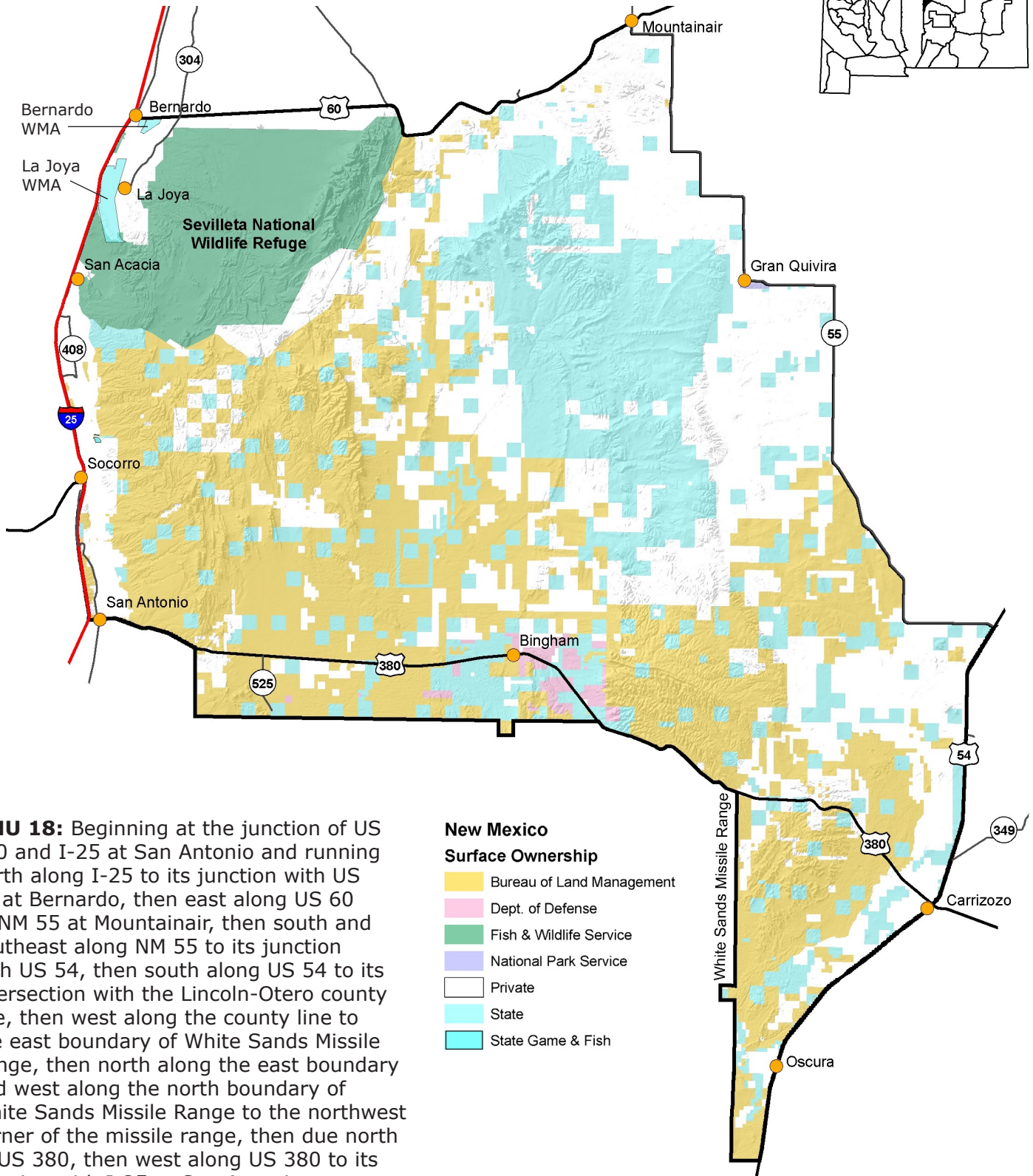
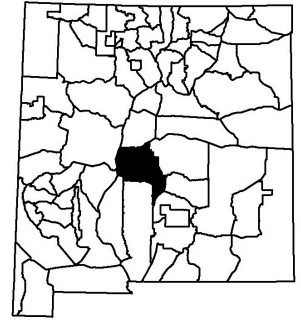




Providing New Mexico  
and its wildlife

**Year-round  
Excellent  
Services**

# Game Management Unit 18



**GMU 18:** Beginning at the junction of US 380 and I-25 at San Antonio and running north along I-25 to its junction with US 60 at Bernardo, then east along US 60 to NM 55 at Mountainair, then south and southeast along NM 55 to its junction with US 54, then south along US 54 to its intersection with the Lincoln-Otero county line, then west along the county line to the east boundary of White Sands Missile Range, then north along the east boundary and west along the north boundary of White Sands Missile Range to the northwest corner of the missile range, then due north to US 380, then west along US 380 to its junction with I-25 at San Antonio.

## Maps for GMU 18

**BLM Maps:** Carrizozo Quad, Corona Quad, Oscura Mountains Quad, and Socorro Quad.

These and other maps may be found at NM Public Lands Information Center, (877) 851-8946, or visit <http://plimapcenter.org/NM/>.