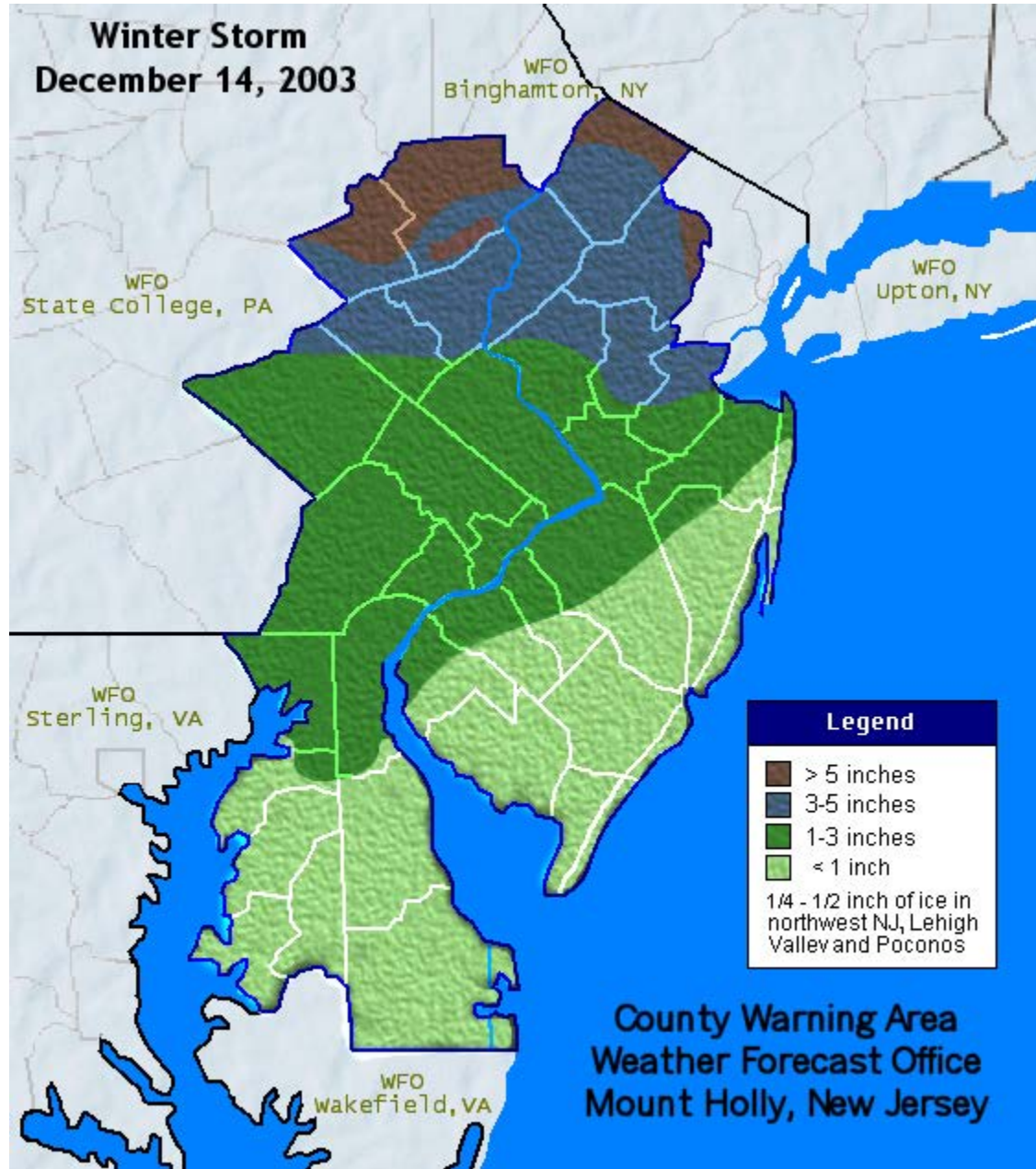


Winter Storm Summary for December 14, 2003



000

NOUS41 KPHI 151519 CCA

PNSPHI

PAZ054-055-060>062-067>071-NJZ001-007>010-012>026-

DEZ001>004-MDZ008-012-015-019-020-

MDZ007>008-151800-

SNOWFALL REPORTS...UPDATED

NATIONAL WEATHER SERVICE MT HOLLY NJ

1020 AM EST MON DEC 15 2003

...THE DECEMBER 14, 2003 WINTER STORM...

ALL AREAS WITH THE EXCEPTION OF FAR SOUTHEAST NEW JERSEY AND INTO SOUTHERN DELAWARE STARTED OUT AS SNOW. MILDER AIR MOVED IN PRODUCING SOME SLEET AND FREEZING RAIN. SOME ICE ACCUMULATIONS OCCURRED ACROSS THE LEHIGH VALLEY, THE POCONOS AND NORTHWEST NEW JERSEY AS THE SNOW CHANGED TO FREEZING RAIN. OTHER AREAS SOUTH AND EAST OF THE LEHIGH VALLEY CHANGED TO MAINLY RAIN BY LATE MORNING ON THE 14TH. THE TOTALS BELOW SHOULD BE CONSIDERED PRELIMINARY.

LOCATION      TOTAL    COMMENTS

SNOW

PHILADELPHIA AIRPORT	1.2	
NEW CASTLE AIRPORT	1.0	
LEHIGH VALLEY AIRPORT	3.0	0.25 INCHES OF ICE ACCUMULATION

WIND INSTRUMENTS FROZE

DELAWARE

...KENT COUNTY...

SMYRNA	1.0	
--------	-----	--

...NEW CASTLE COUNTY...

NEWARK	2.0	
BEAR	1.1	
NEW CASTLE AIRPORT	1.0	
WILMINGTON	0.8	

NEW JERSEY

...BURLINGTON COUNTY...

LUMBERTON	1.5
MOUNT LAUREL	1.4
MOUNT HOLLY NWS	1.4

...CAMDEN COUNTY...

SOMERDALE	1.2
-----------	-----

...GLOUCESTER COUNTY...

GLASSBORO	0.8
-----------	-----

...HUNTERDON COUNTY...

FLEMINGTON	2.5
RARITAN	1.5

...MERCER COUNTY...

EWING	1.8
-------	-----

LAWRENCEVILLE 1.6

HIGHTSTOWN 1.4

...MIDDLESEX COUNTY...

NEW BRUNSWICK 3.8

NORTH BRUNSWICK 3.5

METUCHEN 3.0

EAST BRUNSWICK 3.0

...MONMOUTH COUNTY...

FREEHOLD 1.0

CLARKSBURG 0.5

...MORRIS COUNTY...

BOONTON 7.0

CHATHAM 5.5

BUTLER 4.5

JEFFERSON TOWNSHIP 4.0

CHESTER 4.0

LONG VALLEY 3.0

MARCELLA 3.0

...SALEM COUNTY...

QUINTON 1.2

...SOMERSET COUNTY...

BELLE MEAD 3.0

SOMERVILLE 2.9

...SUSSEX COUNTY...

WANTAGE 5.0

SUSSEX 4.8

NEWTON 4.0

...WARREN COUNTY...

BELVIDERE 4.0

HACKETTSTOWN 3.5

STEWARTSVILLE 2.5

PENNSYLVANIA

...BERKS COUNTY...

HAMBURG 1.6

...BUCKS COUNTY...

FURLONG 1.3

...CARBON COUNTY...

LEHIGHTON 5.5

...CHESTER COUNTY...

PHOENIXVILLE 2.0

DOWNINGTOWN 1.5

COATESVILLE 1.3

WEST CHESTER 1.0

...DELAWARE COUNTY...

CLIFTON HEIGHTS 1.5

NEWTOWN SQUARE 0.7

...LEHIGH COUNTY...

LEHIGH VALLEY AIRPORT 3.0 0.25 INCHES OF ICE ACCUMULATION

WIND INSTRUMENTS FROZE

...MONTGOMERY COUNTY...

CONSHOHOCKEN 2.0

TRAPPE 1.3

WYNNEWOOD 1.0

HATBORO 1.0

...MONROE COUNTY...

SAYLORSBURG 8.0

POCONO SUMMIT 6.0

TOBYHANNA 5.0 0.50 INCHES OF ICE ACCUMULATION

EAST STROUDSBURG 4.2

KUNKLETOWN 4.0

...NORTHAMPTON COUNTY...

WILLIAMS TOWNSHIP 3.4 0.60 INCHES OF ICE ACCUMULATION

...PHILADELPHIA COUNTY...

NORTHEAST PHILADELPHIA 1.5

PHILADELPHIA AIRPORT 1.2



AGAIN, THE NATIONAL WEATHER SERVICE WOULD LIKE TO THANK ALL THE  
COOPERATIVE OBSERVERS AND WEATHER SPOTTERS WHO TOOK TIME TO SUPPLY  
THE ABOVE INFORMATION.

\$\$

GORSE/GIGI