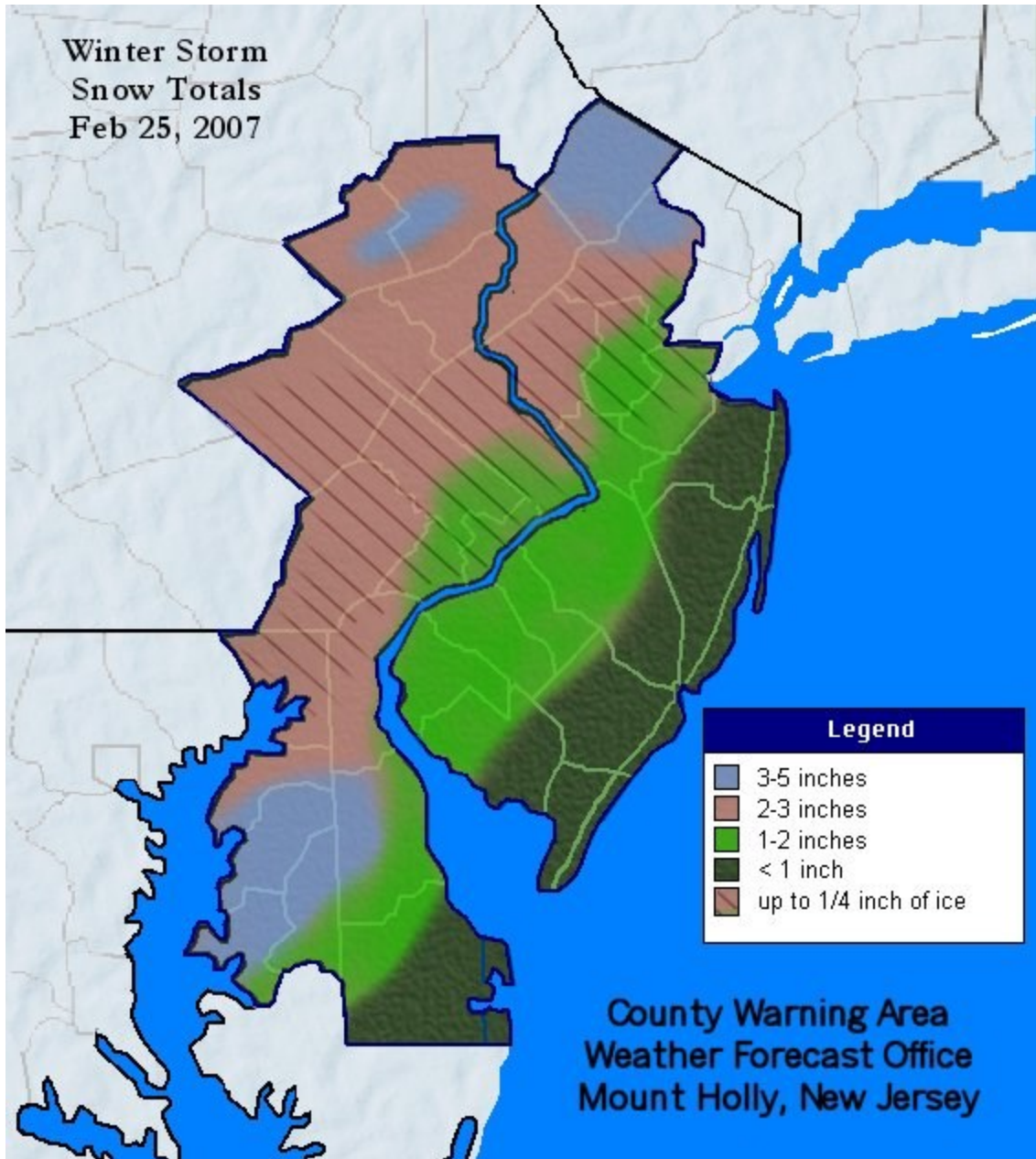


Winter Storm
Snow Totals
Feb 25, 2007



Legend

- 3-5 inches
- 2-3 inches
- 1-2 inches
- < 1 inch
- up to 1/4 inch of ice

County Warning Area
Weather Forecast Office
Mount Holly, New Jersey

PUBLIC INFORMATION STATEMENT
SPOTTER REPORTS
NATIONAL WEATHER SERVICE MOUNT HOLLY NJ
1055 AM EST MON FEB 26 2007

THE FOLLOWING ARE UNOFFICIAL OBSERVATIONS TAKEN DURING THE PAST 24 HOURS FOR THE STORM THAT HAS BEEN AFFECTING OUR REGION. APPRECIATION IS EXTENDED TO HIGHWAY DEPARTMENTS...COOPERATIVE OBSERVERS...SKYWARN SPOTTERS AND MEDIA FOR THESE REPORTS. THIS SUMMARY IS ALSO AVAILABLE ON OUR HOME PAGE AT WEATHER.GOV/PHI

*****STORM TOTAL RAINFALL*****

LOCATION STORM TOTAL TIME/DATE COMMENTS
 RAINFALL OF
 (INCHES) MEASUREMENT

NEW JERSEY

...CAPE MAY COUNTY...

GREEN CREEK	1.16	800 AM	2/26 SPOTTER
FISHING CREEK	1.03	800 AM	2/26 SPOTTER
ELDORA	1.00	800 AM	2/26 SPOTTER
SCOTCH BONNET	0.97	800 AM	2/26 SPOTTER
SEAVILLE	0.80	800 AM	2/26 SPOTTER

*****STORM TOTAL SNOWFALL*****

LOCATION STORM TOTAL TIME/DATE COMMENTS
 SNOWFALL OF
 (INCHES) MEASUREMENT

DELAWARE

...KENT COUNTY...

DOVER	2.6	800 AM	2/26 SPOTTER DEOS
CAMDEN	2.0	518 PM	2/25 SPOTTER
MAGNOLIA	1.3	500 PM	2/25 SPOTTER

...NEW CASTLE COUNTY...

BEAR	2.4	700 AM	2/26 SPOTTER
GLASGOW	2.4	800 AM	2/26 SPOTTER DEOS
WILMINGTON AIRPORT	2.4	800 AM	2/26 SPOTTER
HOCKESSIN	2.0	519 PM	2/25 SPOTTER
YORKLYN	2.0	645 PM	2/25 SPOTTER
HOCKESSIN	1.8	800 AM	2/26 SPOTTER DEOS

CENTREVILLE 0.8 519 PM 2/25 SPOTTER

...SUSSEX COUNTY...

LINCOLN 1.3 830 PM 2/25 SPOTTER
GREENWOOD 1.0 700 AM 2/26 COOP GRND1
MILTON 1.0 445 PM 2/25 SPOTTER
BETHANY BEACH 0.8 700 PM 2/25 SPOTTER
LAUREL 0.8 517 PM 2/25 SPOTTER
MILFORD 0.8 518 PM 2/25 SPOTTER
SEAFORD 0.8 516 PM 2/25 SPOTTER
LEWES 0.5 518 PM 2/25 SPOTTER
LONG NECK 0.4 700 PM 2/25 SPOTTER
BRIDGEVILLE 0.3 800 AM 2/26 SPOTTER DEOS

MARYLAND

...CAROLINE COUNTY...

HENDERSON 4.5 512 PM 2/25 SPOTTER
DENTON 2.0 512 PM 2/25 SPOTTER
RIDGELY 2.0 513 PM 2/25 SPOTTER
PRESTON 1.8 513 PM 2/25 SPOTTER

...CECIL COUNTY...

CONOWINGO DAM 3.0 700 AM 2/26 SPOTTER
CHARLESTOWN 2.5 514 PM 2/25 SPOTTER
PORT DEPOSIT 2.3 514 PM 2/25 SPOTTER
ELKTON 2.0 515 PM 2/25 SPOTTER
ELKTON 1.7 700 AM 2/26 SPOTTER COCORAHS

...KENT COUNTY...

ROCK HALL 4.0 1200 PM 2/26 SPOTTER
MILLINGTON 2.0 516 PM 2/25 SPOTTER

...QUEEN ANNE'S COUNTY...

STEVENSVILLE 3.9 700 AM 2/26 SPOTTER

...TALBOT COUNTY...

SAINT MICHAELS 3.0 509 PM 2/25 SPOTTER
ST. MICHAELS 2.3 700 PM 2/25 SPOTTER
CORDOVA 2.0 511 PM 2/25 SPOTTER
ROYAL OAK 1.7 100 PM 2/25 SPOTTER

NEW JERSEY

...ATLANTIC COUNTY...

HAMMONTON 1.1 815 PM 2/25 SPOTTER
ATLANTIC CITY AIRPORT 0.4 700 AM 2/26 SPOTTER
PLEASANTVILLE 0.4 700 AM 2/26 SPOTTER

SOUTH EGG HARBOR 0.4 930 PM 2/25 SPOTTER

...BURLINGTON COUNTY...

MAPLE SHADE 1.7 715 PM 2/25 SPOTTER
MOUNT HOLLY NWS 1.6 600 AM 2/26 NWS EMPLOYEE PHIN4
MOUNT LAUREL 1.6 750 AM 2/26 NWS EMPLOYEE MLTN4
DELRAN 1.5 700 AM 2/26 SPOTTER
EDGEWATER PARK 1.5 752 PM 2/25 SPOTTER
WESTAMPTON 1.5 900 PM 2/25 SPOTTER
WRIGHTSTOWN 1.3 700 AM 2/26 COOP WRIN4
NEW LISBON 1.0 700 AM 2/26 SPOTTER
TABERNACLE 1.0 735 PM 2/25 SPOTTER

...CAMDEN COUNTY...

SOMERDALE 1.9 530 AM 2/26 COOP SMDN4
PENNSAUKEN 0.5 700 AM 2/26 SPOTTER

...CAPE MAY COUNTY...

GREEN CREEK 1.0 1155 PM 2/26 SPOTTER
CAPE MAY 0.9 700 AM 2/26 COOP CPMN4
SEAVILLE 0.9 1155 AM 2/26 SPOTTER

...GLOUCESTER COUNTY...

NATIONAL PARK 1.5 700 AM 2/26 SPOTTER
GLASSBORO 1.3 520 PM 2/25 SPOTTER

...HUNTERDON COUNTY...

FLEMINGTON 2.0 700 AM 2/26 COOP FLMN4

...MERCER COUNTY...

HIGHTSTOWN 3.2 749 AM 2/26 COOP HGTN4
EWING 1.0 1110 PM 2/25 SPOTTER
MERCERVILLE 1.0 645 PM 2/25 SPOTTER
HAMILTON PARK 0.7 853 PM 2/25 SPOTTER

...MIDDLESEX COUNTY...

EDISON 2.3 900 AM 2/26 SPOTTER
SAYREVILLE 2.0 1230 AM 2/26 SPOTTER
LAURENCE HARBOR 1.3 855 PM 2/25 SPOTTER
NEW BRUNSWICK 1.0 700 AM 2/26 COOP NBRN4
SOUTH PLAINFIELD 1.0 930 PM 2/25 SPOTTER
SOUTH RIVER 1.0 930 PM 2/25 SPOTTER
EAST BRUNSWICK 0.8 944 PM 2/25 SPOTTER
OLD BRIDGE 0.8 930 PM 2/25 SPOTTER
WOODBIDGE 0.5 930 PM 2/25 SPOTTER

...MONMOUTH COUNTY...

CREAM RIDGE 0.8 541 AM 2/26 SPOTTER

...MORRIS COUNTY...

BOONTON RESERVOIR 3.0 700 AM 2/26 SPOTTER
BUTLER 3.0 710 AM 2/26 SPOTTER
WHIPPANY 3.0 900 AM 2/26 SPOTTER
MARCELLA 2.7 715 AM 2/26 SPOTTER
POTTERSVILLE 1.8 744 AM 2/26 COOP PTTN4

...OCEAN COUNTY...

MIDWOOD 1.6 700 AM 2/26 SPOTTER

...SALEM COUNTY...

PITTSBORO#SALEM 1.2 750 PM 2/25 SPOTTER

...SOMERSET COUNTY...

HILLSBOROUGH 1.8 632 AM 2/26 SPOTTER
POTTERSVILLE 1.8 700 AM 2/26 SPOTTER
SOMERVILLE 1.5 715 AM 2/26 SPOTTER

...SUSSEX COUNTY...

WANTAGE 4.0 620 AM 2/26 SPOTTER
SUSSEX 3.6 700 AM 2/26 SPOTTER
NEWTON 3.0 214 AM 2/26 SPOTTER

...WARREN COUNTY...

BLAIRSTOWN 2.6 645 AM 2/26 SPOTTER
HACKETTSTOWN 2.6 650 AM 2/26 SPOTTER
STEWARTSVILLE 1.7 830 AM 2/26 SPOTTER
RIEGELSVILLE 1.5 700 AM 2/26 SPOTTER

PENNSYLVANIA

...BERKS COUNTY...

SINKING SPRING 1.7 1038 PM 2/25 SPOTTER
HAMBURG 1.5 700 AM 2/26 COOP HBGP1
WEST LAWN 1.3 700 AM 2/26 SPOTTER COCORAHS
BECHTELSVILLE 1.0 700 AM 2/26 SPOTTER
MORGANTOWN 1.0 700 AM 2/26 SPOTTER

...BUCKS COUNTY...

LINE LEXINGTON 2.0 759 AM 2/26 SPOTTER
RIEGELSVILLE 2.0 550 AM 2/26 SPOTTER
WARMINSTER 1.7 630 PM 2/25 SPOTTER
SPRINGTOWN 1.6 700 AM 2/26 COOP SPRP1
NESHAMINY FALLS 1.5 752 AM 2/26 COOP OAKP1
OAKFORD 1.5 700 AM 2/26 SPOTTER
PERKASIE 1.5 700 AM 2/26 COOP PRKP1
DOYLESTOWN 1.2 700 AM 2/26 SPOTTER

QUAKERTOWN 1.0 945 PM 2/25 SPOTTER

...CARBON COUNTY...

LEHIGHTON 3.0 700 AM 2/26 COOP LGHP1
PALMERTON 2.5 610 AM 2/26 SPOTTER COCORAHS
LEHIGHTON 2.0 710 AM 2/26 SPOTTER COCORAHS

...CHESTER COUNTY...

PHOENIXVILLE 3.0 1000 PM 2/25 SPOTTER
DOWNINGTOWN 2.5 700 AM 2/26 SPOTTER
LANDENBERG 2.5 700 AM 2/26 SPOTTER
COATESVILLE 2.3 700 AM 2/26 SPOTTER
EAST NANTMEAL 2.0 757 PM 2/25 SPOTTER
EXTON 2.0 1155 PM 2/25 SPOTTER
NEW GARDEN 2.0 700 AM 2/26 SPOTTER
WEST CHESTER 2.0 700 AM 2/26 COOP WCHP1
GLENMOORE 1.6 700 AM 2/26 COOP GNMP1
DEVON 1.5 923 PM 2/25 SPOTTER
DOWNINGTOWN 1.5 340 PM 2/25 SPOTTER
WEST CHESTER 1.5 732 AM 2/26 SPOTTER
CHESTERBROOK 1.0 700 AM 2/26 SPOTTER
HONEY BROOK 1.0 700 AM 2/26 SPOTTER

...DELAWARE COUNTY...

HAVERTOWN 2.5 640 PM 2/25 SPOTTER
LIMA 0.5 700 AM 2/26 SPOTTER

...LEHIGH COUNTY...

ALLENTOWN AIRPORT 2.2 700 AM 2/26 SPOTTER
BREINIGSVILLE 1.5 1030 PM 2/25 SPOTTER

...MONROE COUNTY...

MIDDLE SMITHVILLE 3.2 700 AM 2/26 SPOTTER
POCONO SUMMIT 2.2 545 AM 2/26 SPOTTER
POCONO HEIGHTS 1.4 1052 PM 2/25 SPOTTER

...MONTGOMERY COUNTY...

PALM 2.1 700 AM 2/26 COOP PLMP1
ROYERSFORD 2.0 915 PM 2/25 SPOTTER
WYNNEWOOD 2.0 1200 AM 2/26 SPOTTER
ROSEMONT 1.8 825 PM 2/25 SPOTTER
TRAPPE 1.6 1230 AM 2/26 SPOTTER
AMBLER 1.5 830 AM 2/26 SPOTTER
ELKINS PARK 1.3 917 PM 2/25 SPOTTER
ROCKLEDGE 1.3 700 AM 2/26 SPOTTER COCORAHS
GREEN LANE 1.2 712 AM 2/26 SPOTTER
EAGLEVILLE 1.0 915 PM 2/25 SPOTTER
LOWER PROVIDENCE 1.0 700 AM 2/26 SPOTTER

WYNCOTE 1.0 700 AM 2/26 SPOTTER COCORAHS

...NORTHAMPTON COUNTY...

MARTINS CREEK 1.8 642 AM 2/26 SPOTTER

...PHILADELPHIA COUNTY...

PHILADELPHIA AIRPORT 1.5 700 AM 2/26 SPOTTER

*****STORM TOTAL ICE*****

LOCATION	STORM TOTAL ICE OF (INCHES) MEASUREMENT	TIME/DATE	COMMENTS
----------	---	-----------	----------

NEW JERSEY

...MIDDLESEX COUNTY...

EDISON 0.20 900 AM 2/26 SPOTTER

PENNSYLVANIA

...CHESTER COUNTY...

CHESTERBROOK 0.25 700 AM 2/26 SPOTTER

WEST CHESTER 0.25 732 AM 2/26 SPOTTER

\$\$

ROBERTSON