



vineyard vines®

CUSTOM AND CORPORATE COLLECTION







## EVERY GIFT SHOULD FEEL THIS GOOD ☺



**Welcome to vineyard vines. Every day should feel this good. It's our state of mind and we hope it's yours too.**

When we started this company we knew that no matter what, we wanted to do two things really well: make high-quality clothing and accessories that people want to wear, and offer the best customer service possible. More than 20 years later, we like to think we're doing a pretty good job at both.

At vineyard vines, we're proud to offer our Custom and Corporate Collection, a hand-picked selection of customizable styles for your next holiday party, company event or school year.

No matter where the day takes you, remember, it's about the journey, not the destination. So get out there. Don't wait another minute. Chase your dreams. That's what we did.

Thanks for your support.

*-Shep & Ian*  
Co-founders & brothers







# FIT TO BE TIED

A QUICK BREAKDOWN ON THE THREE DIFFERENT WAYS YOU CAN CUSTOMIZE A TIE (OR ANY OF OUR OTHER PRODUCTS THAT INCORPORATE CUSTOM SILK).

## 1 A LITTLE CUSTOMIZATION

Take a look at the ties that we offer on our website and choose a design that already exists. We'll drop your company logo onto the tail of the tie—it can't be seen when you're wearing it, but it gives you a chance to personalize a mainline tie.

## 2 A LITTLE MORE CUSTOMIZATION

You send us your logo, we put it on our ties, and work with you to make sure that the patterns and layouts look correct. Easy as that.

## 3 THE MOST CUSTOMIZATION

We work with you to create a custom design that represents your company. Do you work for a hospital? How about a fun pattern with a stethoscope and thermometer. Ordering ties or scarves for teachers? We can mock up a books-and-pencils pattern. We'll work with you to make sure that the design we create represents your company.



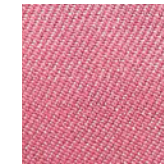
# SILK SWATCH SELECTION

CHOOSE YOUR COLOR FROM THE OPTIONS BELOW.

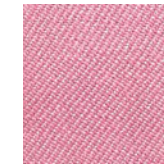
Your custom tie pattern will be similar to the colors on the proof, but due to the nature of printing on silk, these colors can vary over time and may not match perfectly. **A 10% variation is an acceptable standard.**



Red  
MS 066



Raspberry  
MS 070



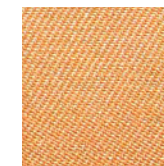
Pink  
MS 083



Bright Pink  
MS 153



Salmon  
MS 061



Orange  
MS 114



Yellow  
MS 040



Green  
MS 095



Kelly Green  
MS 209



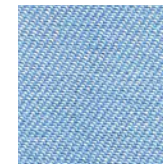
Kiely Blue  
MS 218



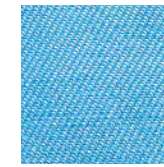
Purple  
MS 038



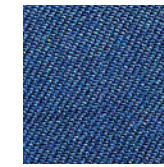
Light Blue  
MS 017



Royal Blue  
MS 026



Azure  
MS 263



Navy  
MS 254



Black  
MS 176

### COLOR POLICY

Colors appear differently on computer screens, printed pamphlets and, more importantly, fabric. If you are not 100% sure of the colors you have selected for your custom products we recommend that you request a STRIKE OFF (silk swatch). There is an additional \$350 charge for this service and it will extend the turnaround time of the project by an additional three weeks. You can select up to four colors to have swatched.

Please note: returns based on color are not accepted, so make sure it's the color you want!





# ESSENTIAL ACCESSORIES

SOMETIMES THE LITTLEST THINGS MAKE THE BIGGEST STATEMENT.



**Silk Makeup Bag**  
6.5H X 10.5W X 3D  
80 Units Minimum



**Silk-Canvas Makeup Bag\***  
6.5H X 9.5W X 2.5D  
80 Units Minimum



**Dopp Kit\***  
6.25H X 10W X 3.5D  
80 Units Minimum



**Clutch\***  
5.5H x 10.5W x 3.5D  
80 Units Minimum



**Envelope Clutch\***  
Small: 6H X 9.25W X 5D  
Medium: 8H X 12W X 3.5D  
80 Units Minimum



**1. Club Belt Key Fob**  
**2. Key Fob**  
120 Units Minimum



**Canvas Club Belt**  
Sizes: 28-44  
90 Units Minimum



**Canvas D-Ring Belt**  
Sizes: 28-44  
110 Units Minimum

Add your logo here.



**Hat\***  
100 Units Minimum



\*PRODUCTS THAT WE CAN EMBROIDER





# PRINTED SILK CANVAS BAG

ADD YOUR OWN PERSONAL TOUCH TO THESE GO-ANYWHERE BAGS.

All Printed Silk Canvas Bags have a minimum order of 80 units.



**Classic Tote**  
12.5H X 17W X 5.5D



Send us your company logo and our design team will create a custom print for you!



**XL Classic Tote**  
17H X 22W X 9D



**Skipper Tote**  
13H X 22W X 6.75D



**Mini Tote**  
10H X 14W X 5D



**Simple Tote (2 Colors)**  
12.5H X 17W X 4.5D



Add your logo here.

**Anchor Tote With Silk**  
15H X 13.25W X 4.5D



**Wine Tote**  
10.25H X 8W X 3.5D



**Tisbury Tote**  
12.5H X 20W X 8D



NEW!

**Cooler Tote**  
13H X 20W X 7.5D



**Mainsail Tote (2 Colors)**  
16H X 21.5W X 9.5D



**Captain Tote**  
13H X 23W X 7D



**Leather Handle Tote**  
13H X 23W X 8D



**Medium Canvas Duffel**  
14H X 23W X 10D



**Large Canvas Duffel**  
14H X 27W X 10D



**Weekender Tote**  
12.5H X 21W X 8.75D



**Long Handle Beach Tote**  
18H X 22W X 8D

## CHOOSE YOUR COLORS!

TRIM



Navy



Yellow\*



Hunter\*



Red\*



Black\*

LININGS



Blue Gingham



Pink Gingham\*



Navy Stripe\*



Green Stripe\*

\*Additional charge



# EMBROIDERED CANVAS BAG

A TRUE CLASSIC THAT NEVER GOES OUT OF STYLE.

All Embroidered Canvas Bags have a minimum order of 60 units.





# CLASSIC SILKS

THERE'S A REASON OUR PRINTS NEVER GO OUT OF STYLE.

All Silks have a minimum order of 100 units.



**Silk Scarf**  
(35" x 35")



**Silk Scarf**  
(11" x 56")



**The Joey**  
(35.5" x 2")



**Silk Pocket Square**  
(16" x 16")



**Printed Tie\***



**Printed Bow Tie\***

\*COMES IN XL AND/OR BOYS





MEN'S

vineyard vines®



WOMEN'S



"We started making tote bags because we were always coming home carrying more than what we left with."  
- *Shap & Ian*  
Co-founders & brothers







### **MEN'S CLASSIC SHEP**

100% French terry cotton  
1/4-zip long-sleeve pullover  
Contrast whale grosgrain zipper pull  
Signature box logo on chest  
Embroidered whale on back neck  
Available in black, gray heather, vineyard navy



### **WOMEN'S CLASSIC SHEP**

100% French terry cotton  
1/4-zip long-sleeve pullover  
Contrast whale grosgrain zipper pull  
Signature box logo on chest  
Embroidered whale on back neck  
Available in black, gray heather, white cap, vineyard navy



## **OUR FAVORITE LAYERS**

SHEP SHIRTS, 1/4-ZIPS & FLEECE VESTS FOR MEN AND WOMEN.



### **MEN'S FLEECE 1/4-Zip**

100% polyester Polartec® fleece  
Whale on zipper pull  
Signature box logo on bottom hem  
Embroidered whale logo on back neck  
Available in navy & black



### **WOMEN'S GONDOLA FLEECE 1/4-Zip**

100% polyester Polartec® fleece  
Whale on zipper pull  
Signature box logo on bottom hem  
Embroidered whale logo on back neck  
Available in black, marshmallow, vineyard navy





**MEN'S CATIONIC HEATHER 1/4-Zip**

100% polyester  
Moisture-wicking & quick-drying  
Wrinkle resistant  
UV protection  
Available in jetty red, deep bay, barracuda



**WOMEN'S SOLID PERFORMANCE 1/4-Zip**

92% polyester, 8% spandex  
Built-in stretch  
Available in vineyard navy & white cap



**MEN'S TECH FLEECE HARBOR VEST**

100% polyester  
Front zipper pockets  
Embroidered whale logo on back neck  
Available in jet black & vineyard navy



**WOMEN'S WESTERLY VEST**

100% polyester Polartec® fleece  
Whale on zipper pull  
Signature box logo on bottom hem  
Front zipper pockets  
Interior zipper pocket and neck binding  
Available in black, white cap, vineyard navy



**MEN'S STRETCH PIQUE POLO**

96% cotton, 4% spandex  
Classic cotton feel  
Wrinkle-resistant & breathable fabric  
Built-in stretch  
Available in black, vineyard navy, white cap, college cardinal



**WOMEN'S PERFORMANCE PIQUE POLO**

96% polyester 4% spandex  
Moisture-wicking  
Built-in stretch  
Available in white cap & vineyard navy





"We love summer, but New England gets cold and windy. We live in fleece when that happens."

*- Shep & Ian*  
Co-founders & brothers



vineyard vines®



# MEN'S FLEECE VESTS

STAY COMFORTABLE ALL DAY LONG IN OUR SWEATER FLEECE AND HARBOR FLEECE VESTS.



- 1. HARBOR FLEECE VEST (XS - XXL): Jet Black 6O00002
- 2. HARBOR FLEECE VEST (XS - XXL): Vineyard Navy 6O00002
- 3. SWEATER FLEECE VEST (XS - XXL): Deep Bay 6O0099
- 4. SWEATER FLEECE VEST (XS - XXL): Gray Heather 6O0099

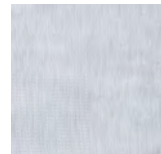




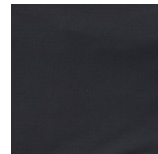
# PICK YOUR 1/4-ZIPS

CHOOSE FROM ONE OF THE COLORS, STYLES AND FABRICS BELOW.

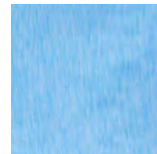
## Sankaty 1/2-Zip



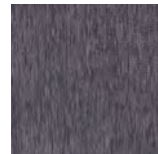
Gray Heather  
6K0990



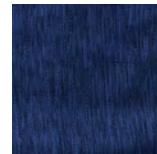
Jet Black  
6K0990



Ocean Breeze  
6K0990

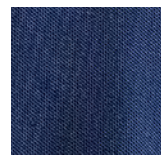


Evening Sky  
6K0990



Vineyard Navy  
6K0990

## Saltwater 1/4-Zip



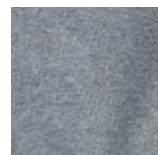
Vineyard Navy  
6K6005



Charcoal  
6K6005



College Cardinal  
6K6005



Graphite  
6K6005

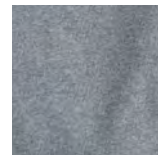


Sea Urchin  
6K6005

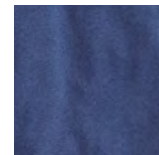
## New Saltwater 1/4-Zip



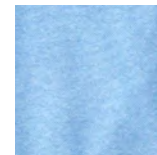
Gray Heather  
6K000252



Charcoal Heather  
6K000252

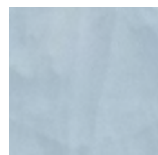


Deep Bay  
6K000252



Coastline  
6K000252

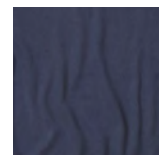
## Cationic Heathered 1/4-Zip



Barracuda  
6K6013

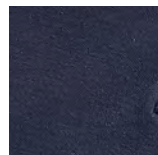


Jetty Red  
6K6013

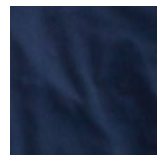


Deep Bay  
6K6013

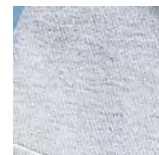
## Classic Shep Shirt



Black  
6K0483



Vineyard Navy  
6K0483



Gray Heather  
6K0483



# MEN'S 1/4-ZIPS

IN PERFORMANCE FABRIC OR CLASSIC COTTON.



PERFORMANCE



6K0990

## Sankaty 1/2-Zip

Size XS - XXL



PERFORMANCE



6K6005

## Saltwater 1/4-Zip

Size XS - XXL



PERFORMANCE



6K6013

## Cationic Heathered 1/4-Zip

Size XS - XXL



NEW

6K000252

## New Saltwater 1/4-Zip

Size XS - XXL



WICKING



WRINKLE  
RESISTANT



QUICK DRY



UV PROTECTION





# PICK YOUR POLOS

CHOOSE FROM ONE OF THE COLORS, PATTERNS AND FABRICS BELOW.

## Winstead Sankaty Stripe Polo



Jet Black  
6K1381



Deep Bay  
6K1381



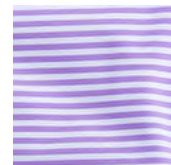
Granite  
6K1381



Ocean Breeze  
6K1381



Spinnaker  
6K1381



Sea Urchin  
6K1381

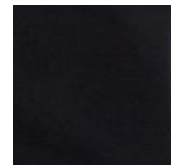


Lighthouse Red  
6K1381

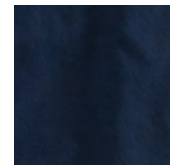
## Stretch Pique Polo



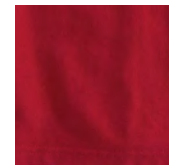
White Cap  
6K6006



Black  
6K6006



Vineyard Navy  
6K6006



College Cardinal  
6K6006

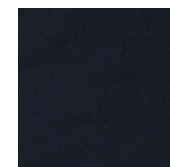
## Solid Edgartown Polo



White Cap  
6K6010



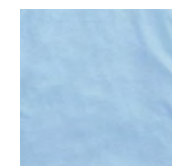
Monument Gray  
6K6010



Black  
6K6010



Deep Bay  
6K6010



Ocean Breeze  
6K6010



Sea Urchin  
6K6010



# MEN'S POLOS

CLASSIC STYLE IN PERFORMANCE, SUPERSOFT OR TRADITIONAL COTTON FABRIC.



6K1381

## Winstead Sankaty Stripe Polo

Size XS - XXL



6K6006

## Stretch Pique Polo

Size XS - XXL



6K6010

## Solid Edgartown Polo

Size XS - XXL



WICKING



WRINKLE  
RESISTANT



QUICK DRY



UV PROTECTION





# MEN'S *BUTTON-DOWNS*

IT DOESN'T GET MORE ICONIC THAN THIS.

6W000018

**Classic Carleton Gingham Murray Shirt**

Size XS - XXL



6W6001

**Classic End On End Murray Shirt**

Size XS - XXL







# WOMEN'S PULLOVERS

FROM SHEPS TO VESTS TO FLEECES—WHEN THE WEATHER TURNS CHILLY, WE'VE GOT YOU COVERED.



6K0484

**Shep Shirt**  
Size XXS - XL



6O6000

**Grid Fleece 1/4-Zip**  
Size XXS - XL



6O0054

**Westerly Vest**  
Size XXS - XL



6O0037

**Fleece 1/4-Zip**  
Size XXS - XXL



6K6019

**Pouch Pocket Shep Shirt**  
Size XXS - XL



NEW!



6K0884

**Funnel Neck Pullover**  
Size XS - XL



6K000257

**Funnel Neck Shep Shirt**  
Size XS - XL



6K6012

**Lightweight Performance 1/4-Zip**  
Size XXS - XL



PERFORMANCE



WICKING



WRINKLE RESISTANT



QUICK DRY



UV PROTECTION





vineyardvines



# WOMEN'S POLOS

CLASSIC STYLE IN PERFORMANCE FABRIC.



6K6016

**Short-Sleeve Pique Polo**

Size XXS - XL



6G000263

**Short-Sleeve Solid Pique Polo**

Size XS - XL



WICKING



WRINKLE  
RESISTANT



QUICK DRY



UV PROTECTION





# YOUR ORGANIZATION. OUR STYLE.

LET US HELP YOU.

## 1 GET IN TOUCH WITH US

Call 203-487-7865 or send an email to [custom@vineyardvines.com](mailto:custom@vineyardvines.com) and we'll talk you through the entire process. After we've brainstormed on a few ideas, all we'll need to get the ball rolling is your logo. (Please be sure that your logo is in a vector file and is in either EPS or AI format.)

## 2 LET US WORK

It'll take about 3 to 4 days for our in-house designers to create some concepts for you to choose from.

## 3 GIVE US THE GREEN LIGHT

Once we've picked a design, all you've got to do is pick your colors. Once you give us the green light we'll get to work!

With everything ready and set, it'll take us about 6 to 8 weeks to get the order to your front door.



# QUOTES FROM OUR CUSTOMERS

"Those wonderful vineyard vines products just reached my desk and I just wanted to write and say thank you."



### GEORGE H.W. BUSH

*41<sup>ST</sup> President of the United States*

"We've used vineyard vines for custom designed gifts for the last four years. The ties have been such a hit, they've made several appearances on CNBC and have been discussed on blogs. Thanks, vineyard vines!"



### FLORENCE CHILDRESS MOON

*Director, Institutional Business Development at VanEck*

"My experience with vineyard vines is always great. Working with their corporate team is always smooth sailing!"



### ANN COWING

*Brown Advisory*

"You guys were great. Our folks loved the ties and scarves."



### JOHN KERRY

*68th US Secretary of State*

"My God, folks! The work of each of the items is so fine that I am sure my handsomely adorned crew will be stopped to get directions to your store. I wear them with such pride I promise that I shall not charge anything for the references I shall be passing along."



### WALTER CRONKITE

*Television Pioneer and CBS Legend*

"...lovely clothes. Needless to say, the shirts and ties are great!"



### AL ROKER

*NBC Weatherman and Entertainer*

"We have loved working with vineyard vines over the years on everything from custom ties and totes to key fobs and make-up bags. Our VIP supporters always look forward to seeing what we select for them each year, and we love spotting our partners wearing our branded ties and carrying our totes at conferences and events."



### TIRZAH ORR

*Assistant to the President & CEO at National Confectioners Association*





**CONTACT US FOR  
MORE INFORMATION**



**vineyard vines®**

181 HARBOR DRIVE • STAMFORD, CT 06902  
203.487.7865

**vineyardvines.com**

