



Valeo



UBS

**BRAIN DIVISION**

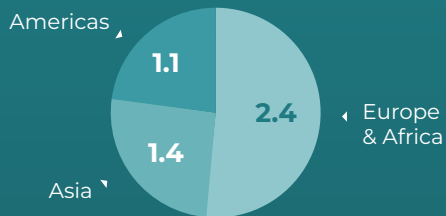
STRICTLY PRIVATE & CONFIDENTIAL

SMART TECHNOLOGY FOR SMARTER MOBILITY

# A HIGH TECH PROFITABLE GLOBAL LEADER

**€4.9Bn**

Revenue in 2023



**> €30Bn**

Order Intake 2022+2023

**> 4x**

OEM Book-to-Bill Ratio 2023

**24,000+**

Total FTEs

of which  
10,000+ R&D

2/3 of BRAIN  
Indirect Employees

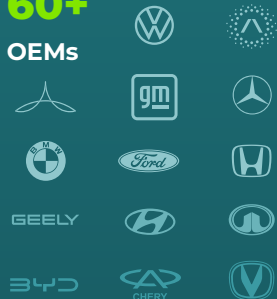
**1 out of 3**

New Vehicles Has BRAIN Content<sup>(1)</sup>



**60+**

OEMs



**8,700**

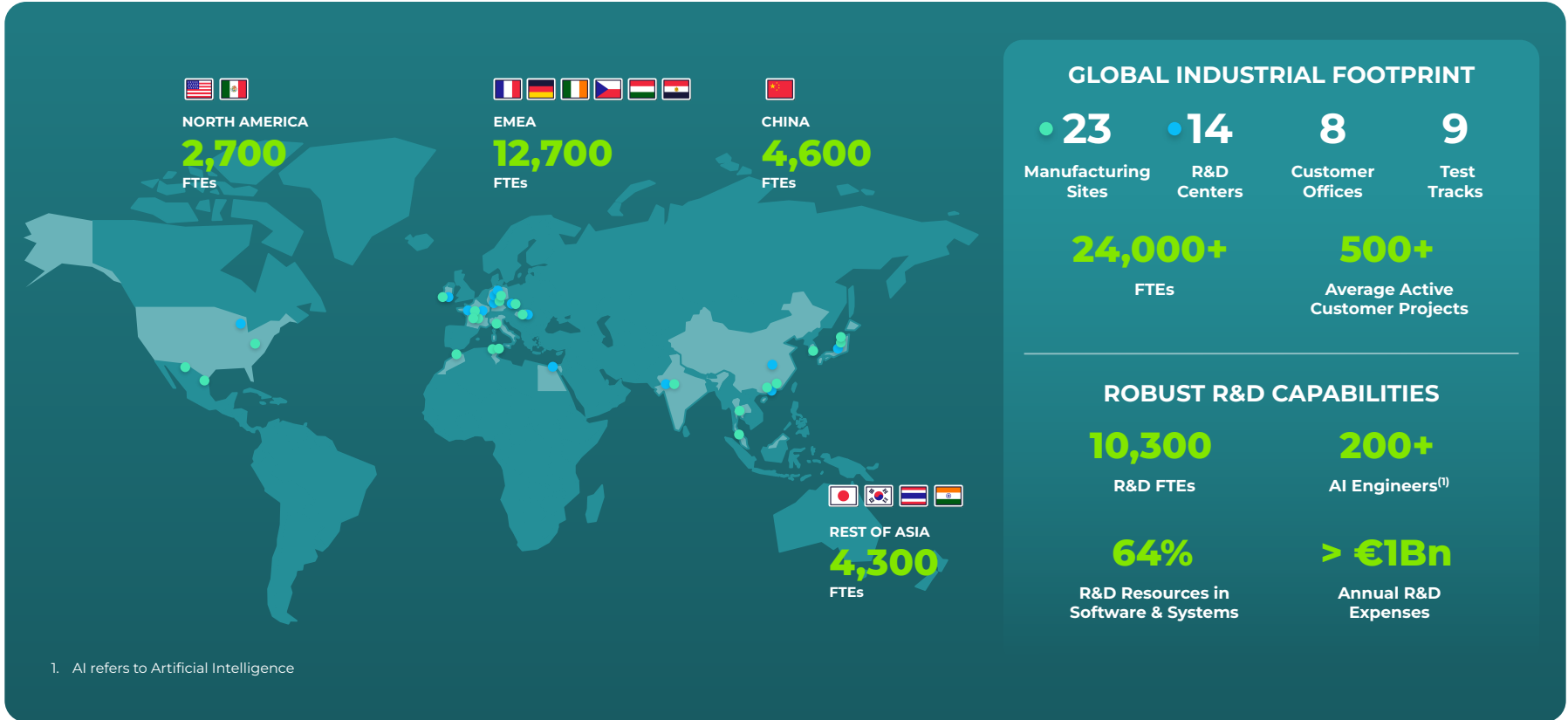
Active Patents Portfolio



1. Based on Valeo estimates

# UNMATCHED TECHNOLOGICAL AND INDUSTRIAL CAPABILITIES AND SCALE

Global Footprint with Robust R&D Capabilities – Managing Complexity is Part of Brain's DNA



1. AI refers to Artificial Intelligence

# MAIN RESEARCH & DEVELOPMENT CENTERS

Global R&D Footprint Harnesses Top Technical Talent from Around the World



Créteil, VMTC  
France

👥 700



Bietigheim  
Germany

👥 1,200



Prague  
Czech Republic

👥 710



Tuam  
Ireland

👥 500



Troy  
USA

👥 430



Cairo  
Egypt

👥 2,100



Chennai  
India

👥 1,400



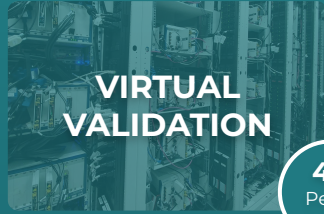
Shenzhen & Wuhan  
China

👥 1,800

👥 Headcounts

# WORLD-CLASS VALIDATION CAPABILITIES ENABLE SYSTEM ROBUSTNESS AND PERFORMANCE

Significant Infrastructure in Place to Harness Data and Use it to Create Value



## VIRTUAL VALIDATION

40  
Peta-  
bytes

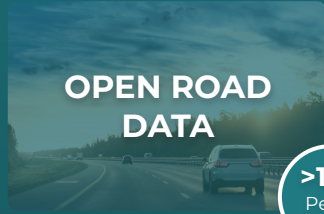
Large scale simulation capability with  
**8 HIL & SIL FARMS**  
on sites and in the cloud running  
**250+ test benches<sup>(1)(2)</sup>**



## PHYSICAL VALIDATION

2.5  
million  
KM

Worldwide network of  
**9 TEST TRACKS**  
with on-site facilities running  
**250+ vehicles**

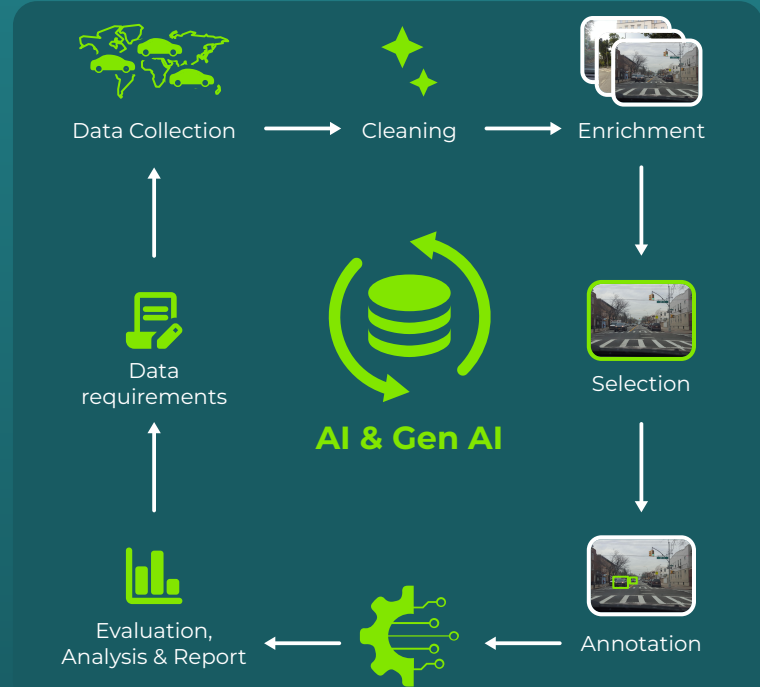


## OPEN ROAD DATA

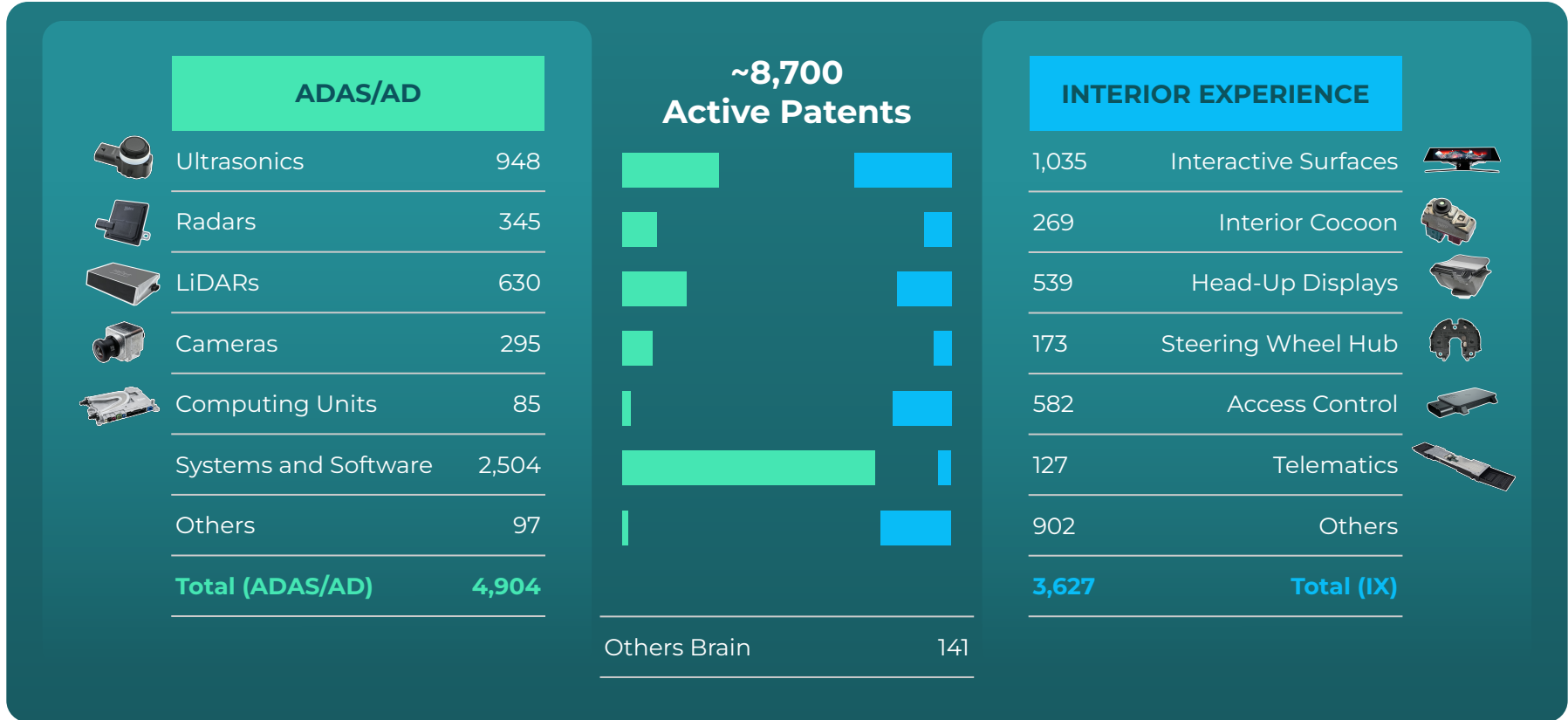
>150  
Peta-  
bytes

**DATA PLATFORM**  
to ingest, store, orchestrate & automate  
**growing volume of data**  
ensuring **quality & efficiency.**  
Leveraging data to **create value**

1. HIL refers to Hardware-in-the-loop
2. SIL refers to Software-in-the-loop



# RICH IP PORTFOLIO ACROSS ALL PRODUCT CATEGORIES



# DEVELOPING A VIBRANT ECOSYSTEMS

“Western World”



# DEVELOPING A VIBRANT ECOSYSTEMS



China

## SERVICES



## SOFTWARE



## COMPUTING UNITS



## DRIVING AUTOMATION SENSORS



## INTERIOR EXPERIENCE DEVICES



## CONNECTIVITY





# ROBUST S1 2024 : +2.2PTS EBITDA MARGIN YoY

Driven by Growth in ADAS and Interior Experience

Sales

€2,569 M\*

+6% lfl growth in OEM Sales

**+6pts**  
outperformance

ADAS

Sales €1,659M  
+7% lfl growth in OEM Sales

Interior Experience

+4% lfl growth in OEM Sales

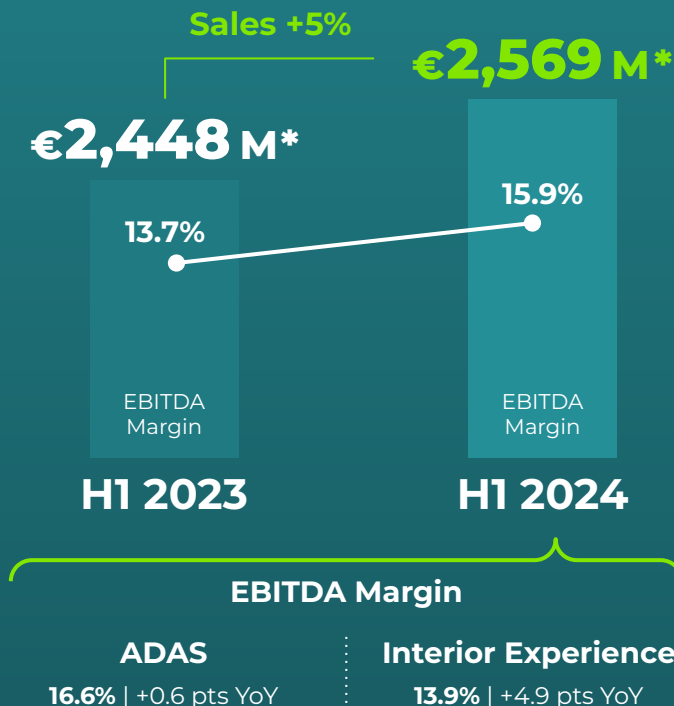
## Business Highlights

 Production ramp-up in cameras

 Growth with Japanese and Korean OEMs

 Impact on margins of higher sales in ADAS & Interior Experience

\* Including Top Column Module Business



# OUR ORGANIZATION TO SERVE OUR MARKETS

Division

## VALEO BRAIN DIVISION

Product Groups

### DRIVING AUTOMATION

Product Lines

DETECT



VISION



LiDAR



COMPUTE



anSWer

0 1 1 0  
1 0 0 1

### INTERIOR EXPERIENCE

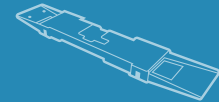
SENSE



COCKPIT



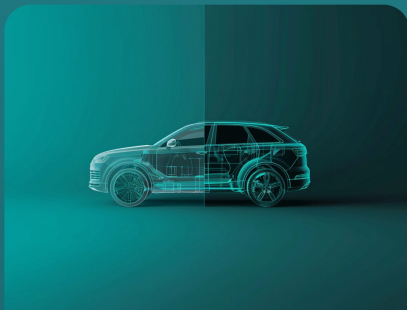
CONNECT



\* As of January 1st 2025

# SDV\* : A PARADIGM SHIFT IN AUTOMOTIVE DESIGN

Where Software Becomes The Core Of Vehicle Functionality



## BEYOND MECHANICS

Shift from hardware to software-centric developments



## SAFETY & AUTOMATION

Algorithms and AI for safer and pleasant mobility



## PERSONALIZED EXPERIENCE

Adapting to user preferences and needs



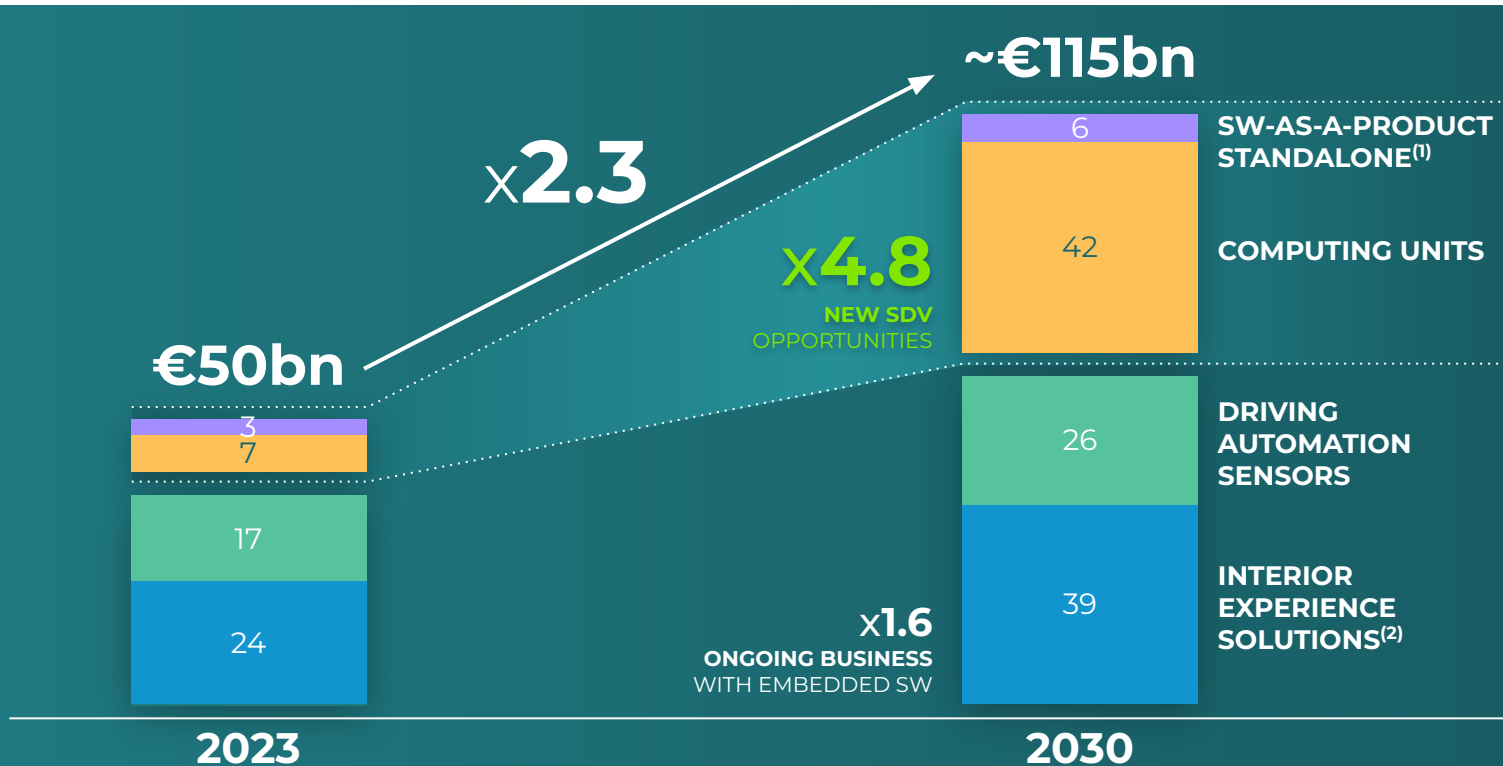
## CONTINUOUS EVOLUTION

SW updates for new features and post purchase improvements

## BRAIN IS AT THE HEART OF THE SDV TRANSFORMATION

\* Software Defined Vehicle

# A BOOMING MARKET BOOSTED BY THE SDV SHIFT



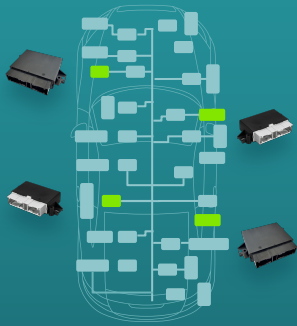
1. ADAS/AD Software and Addressable Middleware  
 2. Including Connectivity

# BOOSTING BRAIN ACCESSIBLE CONTENT PER CAR

Accessible Computing Units' Average Content per Car Multiplied by 10 from Distributed to Fully Centralized Architectures

Valeo Offer

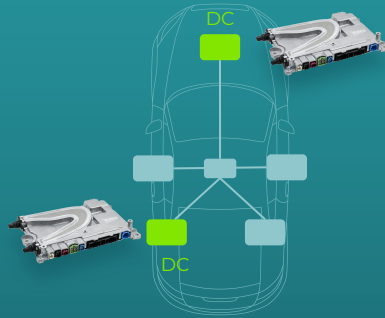
up to **150€**



**DISTRIBUTED ARCHITECTURE**

**TODAY**

up to **500€**

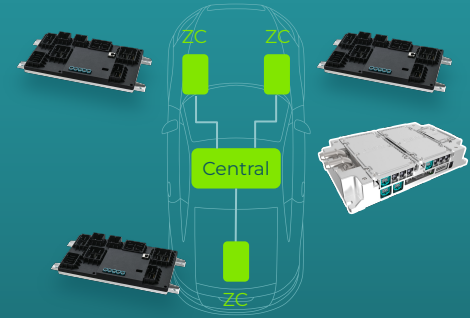


**CENTRALIZED ARCHITECTURE**

DOMAIN  
CONTROLLERS

**2028**

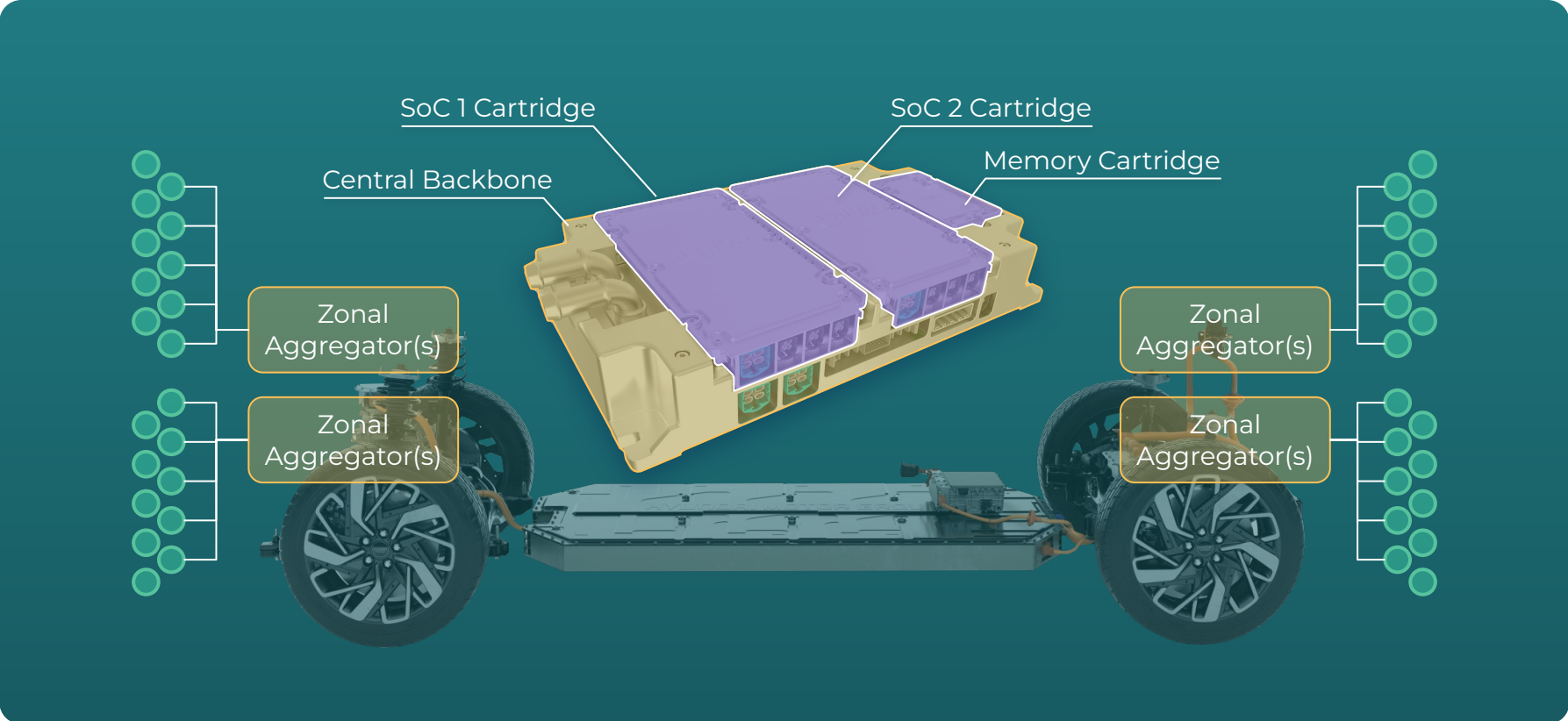
up to **1,500€**



CENTRAL & ZONE  
CONTROLLERS

**2030**

# MODULAR COMPUTE CLUSTER ARCHITECTURE



# CAPTURING THE TRANSFORMATIVE COMPUTING UNITS MARKET

## ZONE CONTROLLER



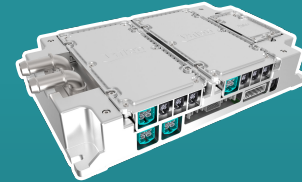
- High-speed data transfer and power distribution management across vehicle zones
- Strong partnership with Leoni
- Power dissipation and load balancing optimization
- "Smart fuse" functionality and support for multiple communication protocols
- Simplifies vehicle architecture - pivotal in reducing vehicle weight and CO2 emissions

## DOMAIN CONTROLLER



- Scalable, high-performance solution for centralized computing in ADAS
- Designed to reduce vehicle complexity and emissions
- Tailored solutions with adaptable computational power
- Supports a broad sensor suite and advanced thermal management
- Compliance to high safety standards up to ASIL D<sup>(1)</sup>

## CENTRAL COMPUTER



- Ultimate centralization of computing power
- All domains in one device for vehicle architecture optimization
- Scalable design for massive transversal-wide implementation
- Silent advanced thermal management with liquid and passive cooling
- Long-standing experience in connectors inherited from vision controller know-how
- Compliance to high safety standards up to ASIL D<sup>(1)</sup>

2028: 12% <sup>(2)</sup>

1. ASIL refers to Automotive Safety Integrity Level  
2. Refers to 2030E market position

 2028 Valeo Market Share  Leader  Top 3  Challenger

## 3 BOOSTERS TO SAFETY AND CAR AUTOMATION

### REGULATION



**Regulation is a long process but makes over time ADAS features mandatory**

### NCAP SAFETY RATINGS



**EURONCAP, which has a strong influence on car models' reputation, now rates ADAS**

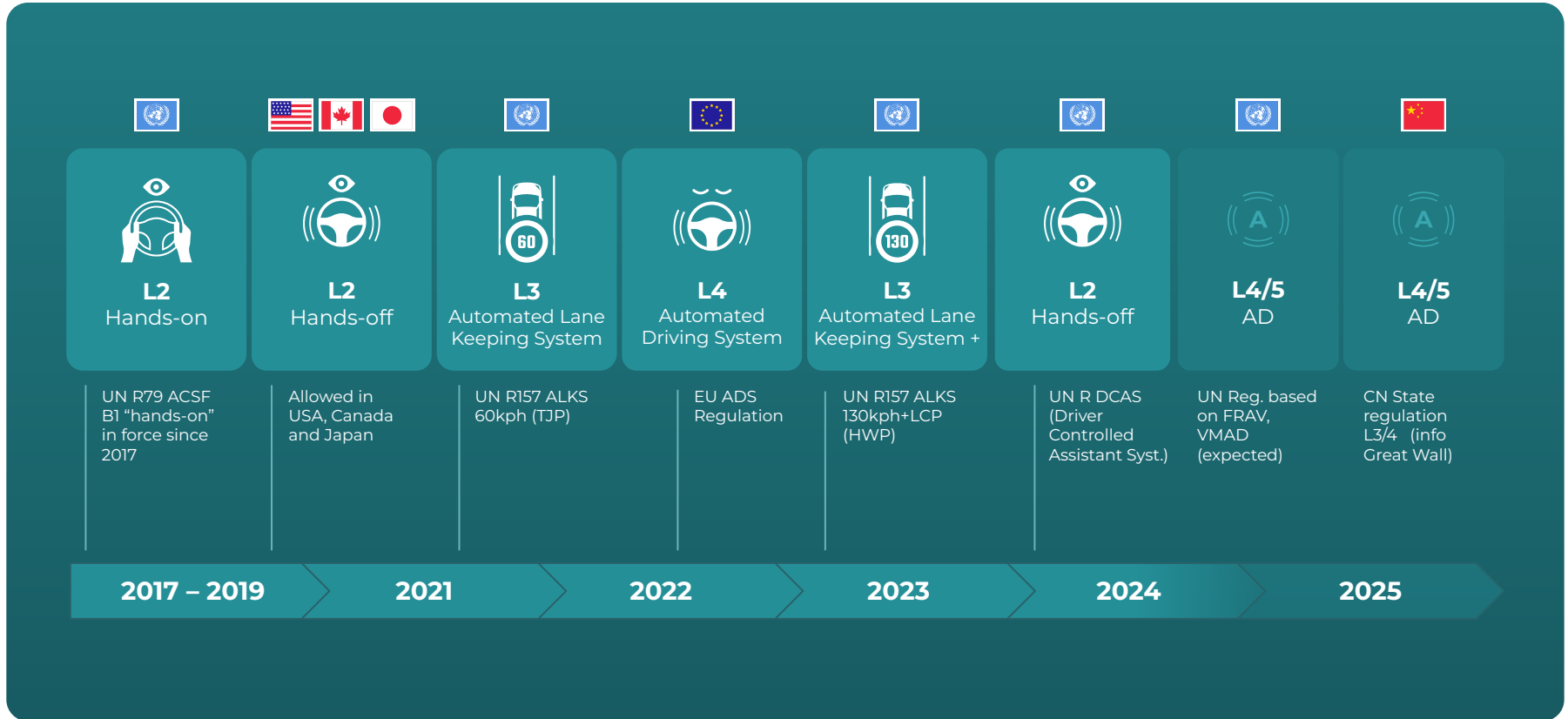
### INNOVATION



**ADAS and Automation are strong differentiators for innovative brands**

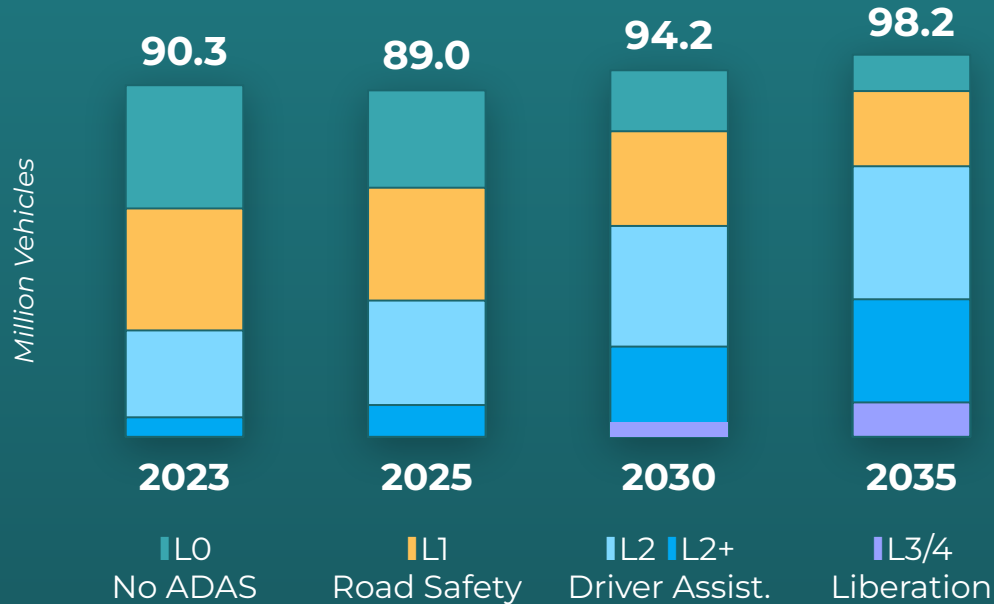


# UP TO A GLOBAL ADOPTION OF HIGHLY AUTOMATED VEHICLES



## MARKET BY AD LEVEL

### 'PRIVATELY OPERATED VEHICLES' BY SAE LEVEL



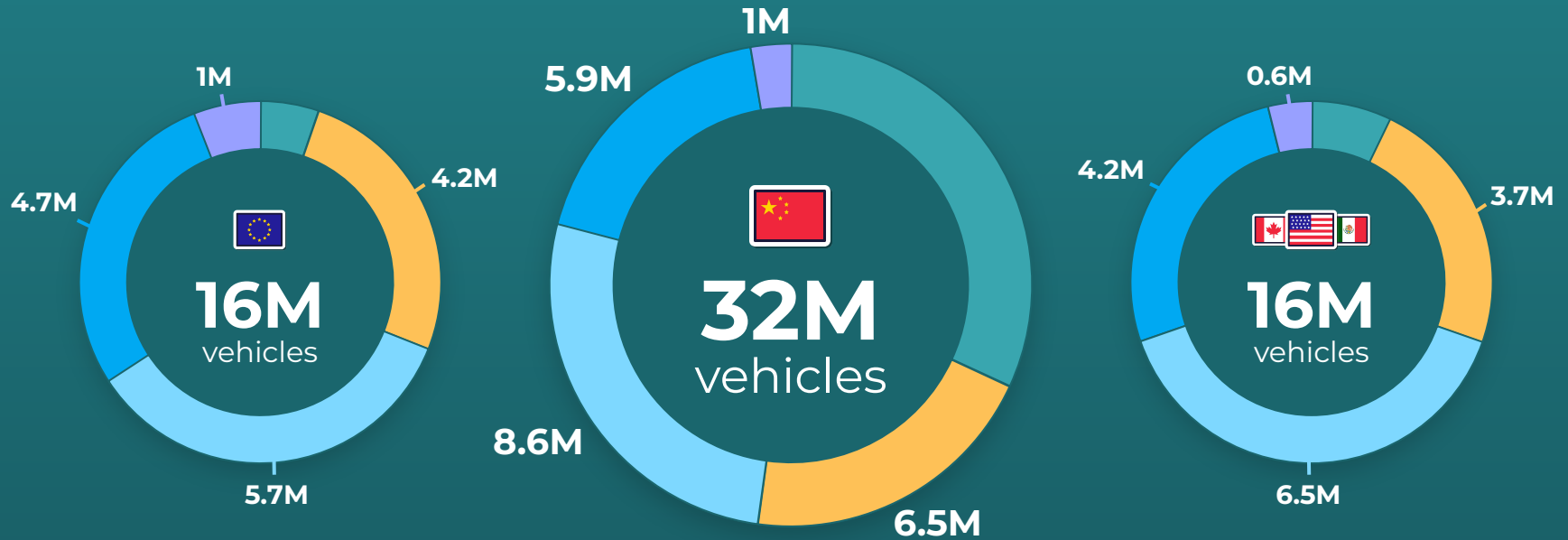
**Road Safety** becomes standard  
(65% in 2025, 90% by 2035)

**Driver Assistance** (L2/L2+) is the dominant segment  
(40% in 2025, 62% by 2035)

**Driver Liberation** (L3/4) further delayed  
(0.1% by 2025, 9% by 2035)

Driverless (L4) in personal cars to start with AVP-type features  
(not shown in this graph)

# POV<sup>1</sup> MARKET BY AD LEVEL IN 2030



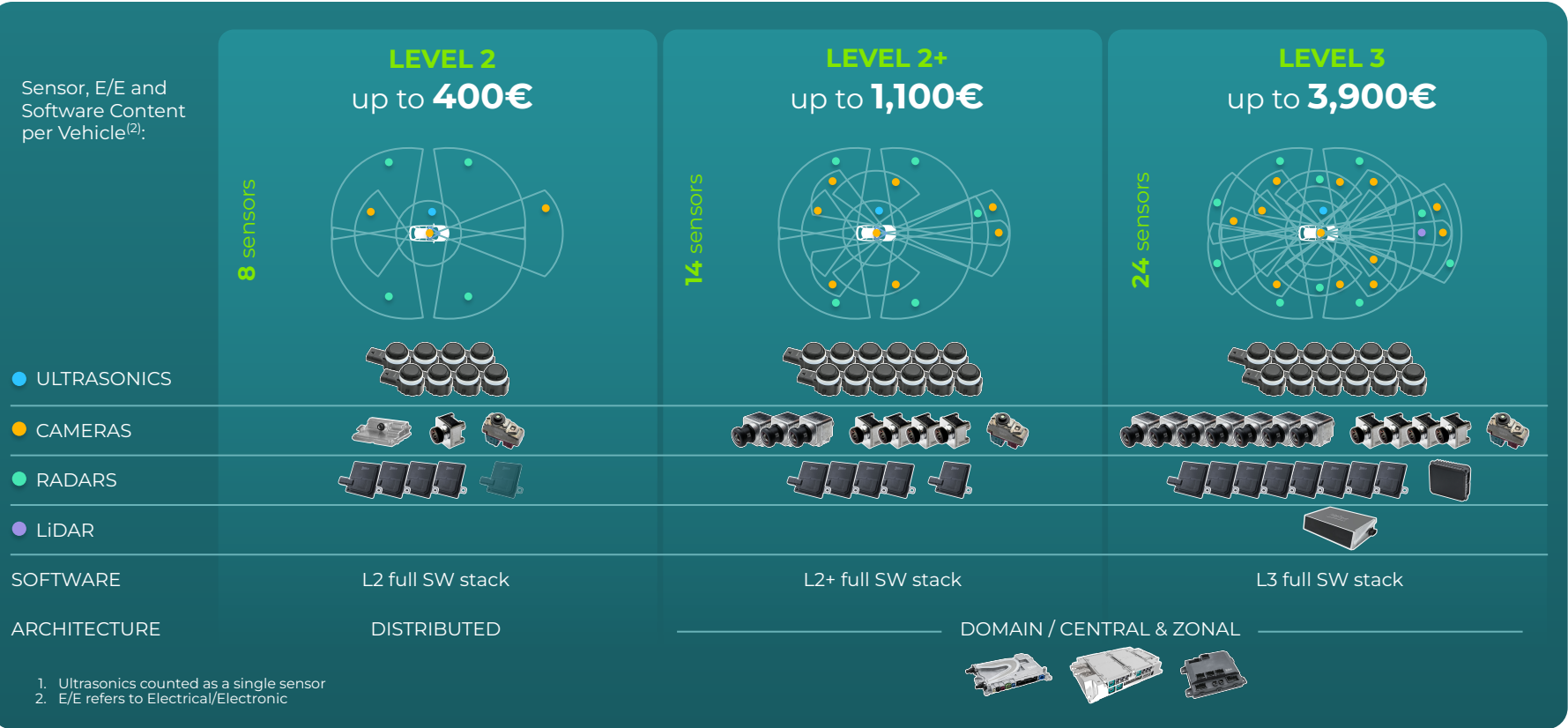
1. Privately Operated Vehicles

■ No ADAS ■ L1 ■ L2 ■ L2+ ■ L3/4

# HIGHER LEVEL OF AUTONOMY

Boosting BRAIN Accessible Content Per Car

Sensor, E/E and Software Content per Vehicle<sup>(2)</sup>:



1. Ultrasonics counted as a single sensor  
 2. E/E refers to Electrical/Electronic

# ADAS BENCHMARK TECHNOLOGY PORTFOLIO

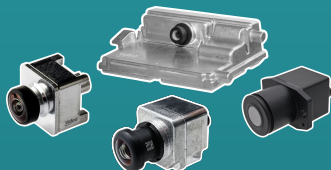
## ULTRASONIC SENSORS



- **Invented by Valeo over 30 Years ago** and remains the undisputed market leader
- AI-based USV10 data interface enabling **software-defined validation**<sup>1</sup>
- Next-gen USV10.2 reduces harness weight and lowering CO2 footprint

50% 🏆

## CAMERAS



- **Smart Front Camera:** Key component in ADAS and AD systems. Powered by Mobileye's EyeQ and Infineon technology
- Leader in **satellite camera technology**
- **360-degree visibility**, driving safety and convenience
- Advanced **thermal imaging**, to detect pedestrians, animals and obstacles on the road

25% 🏆

## RADARS



- **Pioneer** in Mid-Range Radar Sensor technology
- Solutions for both ADAS and Automated Parking applications
- Cutting-edge radar technology backed by **30 years of expertise** and strong industry partnerships
- **Mobileye and Valeo** partnering to deliver **next-gen imaging radars**

5% 🏢

## LIDARS



- Long Range LiDAR enabling **130kph L3-L4 automation**
- High performance point cloud validated through several orders
- **SCALA™ Gen 3** offer superior range-resolution at 12.5 million points/s
- Reliable small objects detection for high speed highway driving

25%<sup>2</sup> 🏆 40%<sup>3</sup> 🏆

1. AI refers to Artificial Intelligence

2. Refers to the global market share

3. Refers to the global market share excluding China

% 2028 Valeo Market Share



Leader

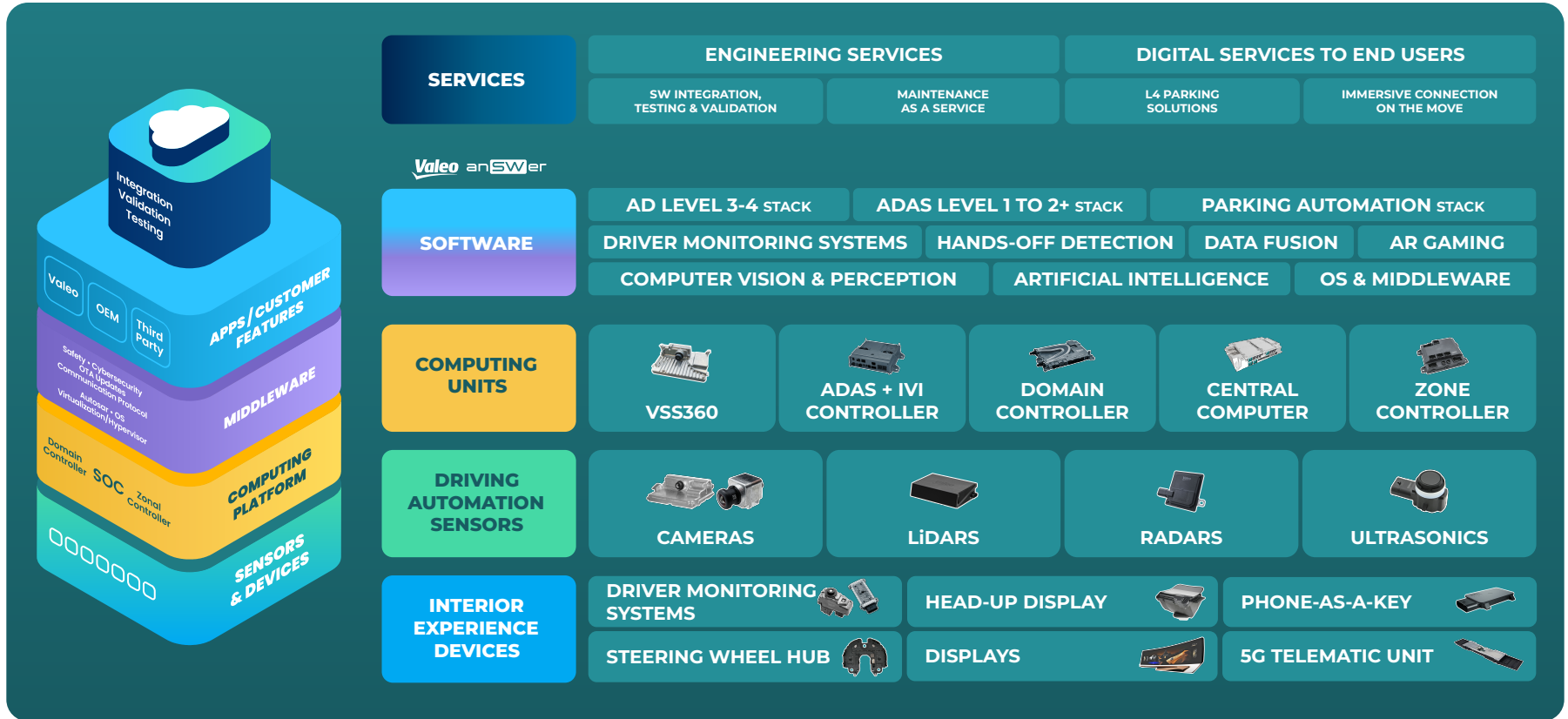


Top 3



Challenger

# OFFERING THE FULL VERTICAL FROM COMPONENTS TO SERVICES



# DELIVERING CONNECTED & IMMERSIVE INTERIOR EXPERIENCE SOLUTIONS

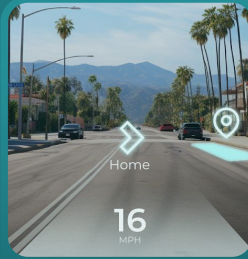
ADAS and IX Combine to Deliver Enhanced Safety, Ease of Use and Interactivity



## INTERIOR COCOON

Driver and cabin monitoring for enhanced safety

2028: **21%** 🏆



## HEAD-UP DISPLAY

AR HUD provides the driver with key information at the right place<sup>1</sup>

2028: **13%** 🏆<sup>2</sup>



## PHONE AS A KEY

Ultra-Wideband Phone-As-A-Key or key fob bring comfort and security

2028: **11%** 📶



## STEERING WHEEL HUB

Hand-Off detection for reliable transition from ADAS to AD

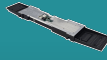
2028: **18%** 🏆



## INTERACTIVE SURFACES

Seamless wide displays and smart surfaces for intuitive HMI<sup>3</sup>

2028: **5%** 📶



## TELEMATICS

Connectivity for connected ADAS/AD and connected people

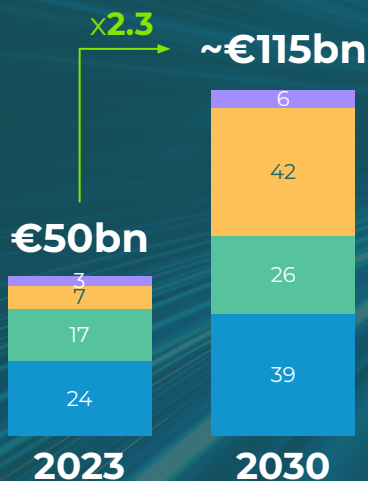
2028: **12%** 🏆

1. AR HUD refers to Augmented Reality Head-Up Display  
2. Refers to 2030E market position

3. HMI refers to Human-Machine Interface

% 2028 Valeo Market Share 🏆 Leader 🏆 Top 3 📶 Challenger

# BRAIN DIVISION IS PERFECTLY POSITIONED TO CAPTURE THE HUGE MARKET OPPORTUNITY



## SOFTWARE

AD LEVEL 3-4 STACK	ADAS LEVEL 1 TO 2+ STACK	PARKING AUTOMATION STACK	
DRIVER MONITORING SYSTEMS	HANDS-OFF DETECTION	DATA FUSION	AR GAMING
COMPUTER VISION & PERCEPTION	ARTIFICIAL INTELLIGENCE	OS & MIDDLEWARE	

## COMPUTING UNITS



## DRIVING AUTOMATION SENSORS



## INTERIOR EXPERIENCE DEVICES





# ADAPTING TO UNCERTAINTY



**POWERTRAIN  
AGNOSTIC**



**MODEL  
AGNOSTIC**



**GEOGRAPHICALLY  
& CUSTOMER  
BALANCED**

# STRONG ECOSYSTEMS

Google

aws

Baidu 百度

Qualcomm

mobileye

GNX

EB

Luxoft

DiDi

intel.

TEXAS INSTRUMENTS

SONY

SAINT-GOBAIN

RENASAS

randstad digital

seeingmachines

VECTOR

Capgemini

Pioneer

P3

MEDIATEK

KPIT

LEONI

GlobalLogic  
A Hitachi Group Company

ZEISS

PhiGent Robotics

momenta

ArcSoft

PARAGON

OMNIVISION

ST

ni

FLIR

NXP

NISSHA

COMPRION

CALTERAH

舜宇车载光学  
SUNNY AUTOMOTIVE OPTICAL

FOCUSLIGHT

VERTIBITE

Megatronix

AUTO.COM

盈盛汽车电子  
Likego

TI

TIANMA

LCE

umec

Horizon Robotics

芯驰 SemiDrive

siengine

AXERA

QUECTEL

WNC

纽瑞芯科技  
NEW RADIO TECH

# STRONG OPERATIONAL FOCUS



**PERFORMANCE AND  
QUALITY FOCUS**



**RESILIENT  
SUPPLY CHAIN**



**AGILE OPERATIONS**



**AI-BOOSTED WORLD**



**ON-TIME CUSTOMER  
PROJECT DELIVERY**



**DISCIPLINED  
EXECUTION  
AND MONITORING**



SMART TECHNOLOGY  
FOR SMARTER MOBILITY