

STUDENTS' LIFE



at **Télécom Paris**

2024



COMETE

OUTLINE

1. **Associations and clubs**
2. **Weekends**
3. **WEI**
4. Former international students opinion about the WEI
5. Contributing to BDE
6. **Contact**

ASSOCIATIONS AND CLUBS

BDE (STUDENTS' UNION)

- ❑ **Largest** student association
- ❑ **Organizes student life in general** (all kinds of events, activities, trips, etc!)
- ❑ Composed of 22 French students and **4 international students who represent you** in it!
- ❑ You can **contribute** to the association, which will give you **important discounts** on all the events organized (*€190 for 2 years*)



BDI (INTERNATIONAL STUDENTS' CLUB)

- ❑ International students association
- ❑ We're responsible for all kinds of events, activities, trips with **international** themes
- ❑ Board composed of only international students, we're here to help you **integrate** yourselves in the school and the French culture
- ❑ There's no cotisation and you're totally free to suggest projects and ideas for us to work on **together!**





Forum : Organize the career fair in December to help students find jobs and internships



Junior Enterprise (JE) : coordinate small missions and tasks for external companies to provide small (paid) missions to students.



Make A Difference (MAD): organize activities for environmental and social causes. (climate change, sex equality, LGBT right...)



Comète : learn how to take photos, make movies, do photoshop and video editing.



Telecom Sound and Magic (TSM) : learn to become a DJ and how to do lights and sounds installation for parties.



Ludo: members gather to play board games, read comics



Bar: become a barman/barmaid at telecom's bar.



La Scène: learn to play many instruments, form a band or just come and play, even if you don't know how to play !



Rezel: learn everything about computers and networking



Kebab Factory Telecom (KFT) : members gather to prepare and sell kebabs at Telecom.



Télécom Business and Finance (TBF): attend and organize conferences about finance and entrepreneurship.



Télécom Voile : learn how to sail.



Télécook : attend cooking workshops.



Télémontagne: people gather to do hikes.



Telecom Imp'hackt : Learn everything about cybersecurity



Téléfrom: organize cheese degustation and raclette.

WEEKENDS

WEEK-END D'INTÉGRATION
SEPTEMBER



WEEK-END À L'ÉTRANGER
NOVEMBER



WEEK-END SKI
JANVIER



WEEK-END SURF
MAY



WEEK-END DE FIN D'ANNÉE
MAY



WEEK-END RANDONNÉE
MAY



WEI

WEI (INTEGRATION WEEKEND)

- ❑ Probably the **most important** and incredible weekend of the year
- ❑ Weekend full of **integration activities** to meet people with whom you will share your whole Télécom experience!
- ❑ **September 05 to 08** (2024)
- ❑ Price (2022): **€140 (contributors)**, €230 (not-contributors)
- ❑ Last year's **website**:
<https://wei.telecom-paris.fr/?lang=en>



PLANNING (2023)



2023-2024

Planning WEI



	Vendredi 25	Samedi 26	Dimanche 27	Lundi 28	Mardi 29	Mercredi 30	Jeudi 31	Vendredi 1
8h30 - 10h30			Petit-déjeuner	Petit-déjeuner	Petit-déjeuner	zzzzZZ		
10h30 - 12h30			Présentation des associations	Activités des associations	Activités BDE	Rangement + Brunch 10h-12h		
12h30 - 14h			Déjeuner	Déjeuner	Déjeuner			
14h - 18h	Activités à Télécom et discussions avec les 2As	RDV 14h30 Gare de Saint-Hilaire de Riez BUS (debrief pôle REC) CHECK - IN	Olympiades BDE	BDE, Forum, et JE : Activités surprise	Olympiades BDS	BUS 12h Arrivée 17h-18h		
18h - 19h		Apéro Telebreizh	Apero JE	Apéro Telefrom	Apéro Forum			
19h - 19h30		Présentation BDE/REC	Présentation des associations	Présentation des associations	Présentation des associations			
19h30 - 22h		Dîner	Dîner	Barbecue	Dîner			
22h - 4h	Binouze Pré-WEI	Soirée Scarabed	Soirée Quadra	Soirée International	Soirée TSM			POT de rentrée







WHAT DO FORMER
INTERNATIONAL STUDENTS
THINK ABOUT THE WEI?

What events or activities did you enjoy the most since you arrived? Where did you **feel more comfortable**?

20 respuestas

Cultural activities, I like it very much, and I feel at ease, there are different types of people in TELECOM, with different tastes, for example in my case I love culture, music, history, etc. I would like to share this with other people.

Big activities organized by the BDE were GREAT. (WEI WES WEA POTS)

The WEI was amazing

I enjoy the most travelling events

Things we could have done **before your arrival** in France to improve your experience?

13 respuestas

more info about administrative procedures before arriving. Bank, mobile carrier, housing, etc...

Tell the students about how the school and associative life works because it is really different from Italy (because we live in the city and we don't do anything at school) and make them aware of the importance of participating in WEI and all the activities at the beginning

Present the WEI earlier, it's really important to integrate oneself and usually international students are not aware because we don't receive enough information

What **factors** had a **negative influence** on your integration?



55 respuestas



If I could participate in WEI I would have. Unfortunately I had something to resolve (back in Vietnam) so I can only arrive Telecom in September.

I missed the WEI due to the lack of knowledge about the French transport system; I come from a country where transport is not like the French one. For example, we don't have to wait for the bus at a stop, we can stop it and ride it in the middle of its route, which is not the case here.

SEPTEMBER 05-08

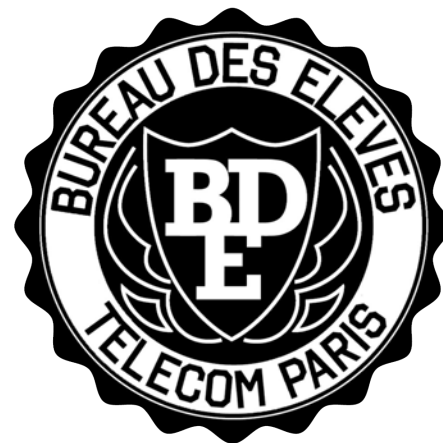
FIRST WEEK OF CLASSES

SAVE THE DATE!

SO, SHOULD I CONTRIBUTE
TO BDE OR NOT?

WHAT IS A CONTRIBUTION? (BDE)

- ❑ You have the possibility to **contribute (pay a contribution) to the BDE association** to benefit from the events organized by the association.
- ❑ Contribution is **not mandatory**, but offers discounts on many trips and weekends: integration in September, abroad in November, skiing in January, surfing, sailing, end of the year, trekking, and much more!
- ❑ Discounts at each party.
- ❑ **TL;DR: if you plan to participate in Télécom's student life, it is definitely a good idea to be a BDE contributor.**
- ❑ **190€** for 2 years



ACTIVITY PRICES (2023-24)

Activity	Date	Price for contributors	Price for non-contributors
WEI (best thing ever)	August 2023	160 €	250 €
WEE (Köln)	November 2023	110 €	140 €
WES (Ski trip)	January 2024	265 €	295 €
Friday parties	Every friday :P	7 €	10 €

Only with WEI, WEE, and WES: 150 € savings (Surfing, hiking, end of year weekends missing, as well as 3 € saving for each party you go!)

LET'S KEEP IN TOUCH!



Foreign Students 2024/2025

WhatsApp group



Scan or upload this QR code using the WhatsApp camera to join this group



Group: Télécom-Paris 2024-25



Valid until 3/31 and will update upon joining group



Alejandro Guijarro (BDE)

+34 609 53 40 14

alejandro.guijarro@telecom-paris.fr



Gabriel Molina (BDE)

+33 07 44 72 79 91

gabriel.molina@telecom-paris.fr



Tania Mahandry (BDI)

+33 07 68 72 04 69

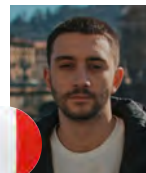
tania.mahandry@telecom-paris.fr



Aldo Pietromatera (BDI)

+39 393 033 7470

aldo.pietromatera@telecom-paris.fr



Arij Hajji (BDE)

+33 07 45 41 23 78

arij.hajji@telecom-paris.fr



Cristian Chávez (BDE)

+33 06 72 23 42 42

chavez@telecom-paris.fr



Carlos Gruss (BDI)

+598 98 075 258

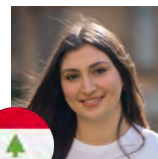
carlos.gruss@telecom-paris.fr



Maria Abrini (BDI)

+33 06 99 53 40 68

maria.abrini@telecom-paris.fr





That's all Folks!