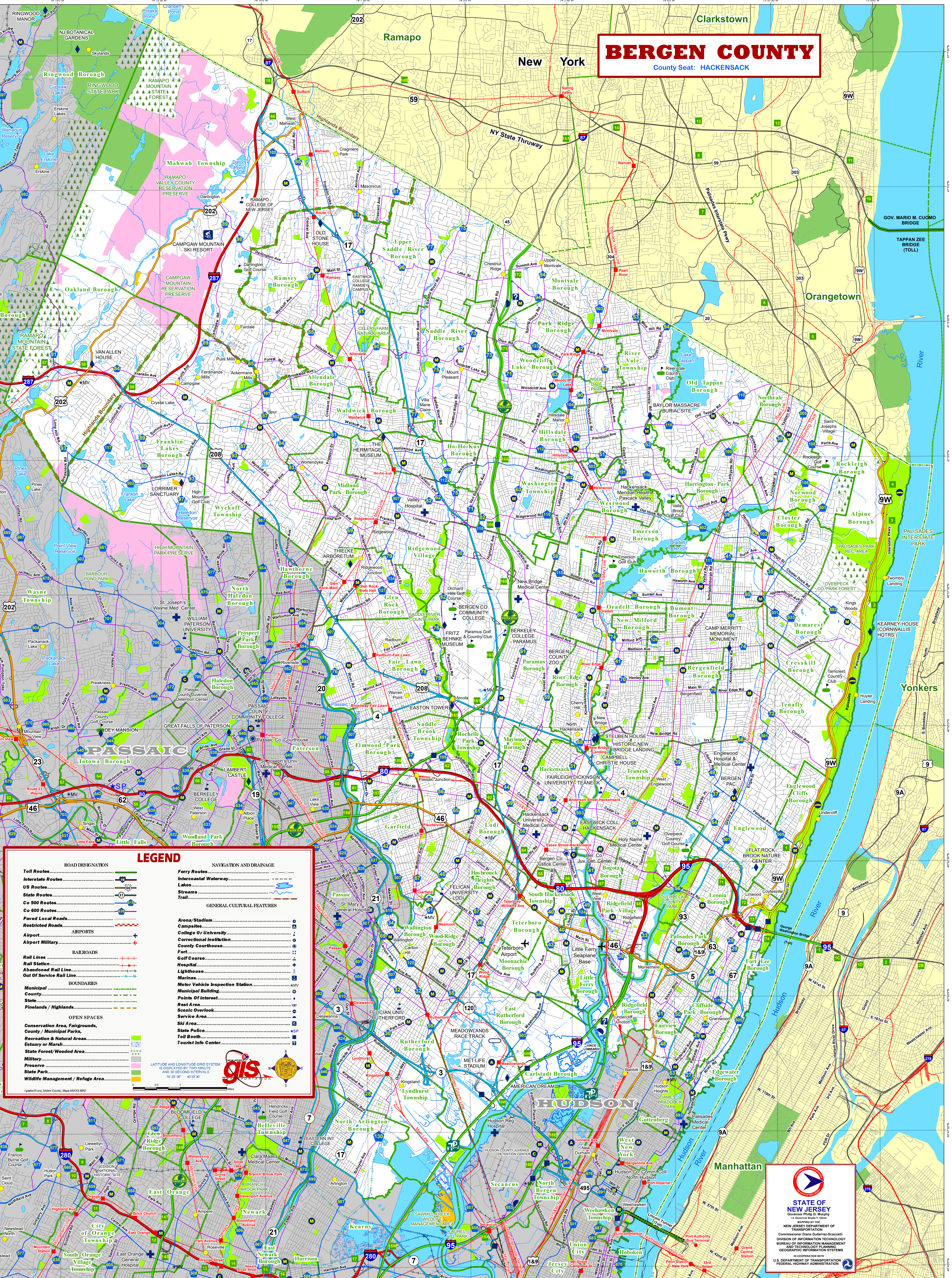


# BERGEN COUNTY

County Seat: HACKENSACK



### LEGEND

ROAD DESIGNATION	NAVIGATION AND DRAINAGE
<b>Toll Routes</b> .....	<b>Ferry Routes</b> .....
<b>Interstate Routes</b> .....	<b>Intercoastal Waterway</b> .....
<b>US Routes</b> .....	<b>Lake</b> .....
<b>State Routes</b> .....	<b>Stream</b> .....
<b>Co 500 Routes</b> .....	<b>Trail</b> .....
<b>Co 600 Routes</b> .....	
<b>Paved Local Roads</b> .....	
<b>Restricted Roads</b> .....	
<b>Airport</b> .....	
<b>Airport Military</b> .....	
<b>Rail Lines</b> .....	
<b>Rail Station</b> .....	
<b>Abandoned Rail Line</b> .....	
<b>Out of Service Rail Line</b> .....	
<b>BOUNDARIES</b>	
<b>Municipal</b> .....	
<b>County</b> .....	
<b>State</b> .....	
<b>Pinelands / Highlands</b> .....	
<b>OPEN SPACES</b>	
<b>Conservation Area, Fairgrounds, County / Municipal Parks, Recreation &amp; Natural Areas, Estuary or Marsh</b> .....	
<b>State Forest/Wooded Area</b> .....	
<b>Military</b> .....	
<b>Preserve</b> .....	
<b>State Park</b> .....	
<b>Wildlife Management / Refuge Area</b> .....	

GENERAL CULTURAL FEATURES
<b>Arena/Stadium</b> .....
<b>Campsite</b> .....
<b>College Or University</b> .....
<b>Correctional Institution</b> .....
<b>County Courthouse</b> .....
<b>Fort</b> .....
<b>Golf Course</b> .....
<b>Hospital</b> .....
<b>Lighthouse</b> .....
<b>Marinas</b> .....
<b>Motor Vehicle Inspection Station</b> .....
<b>Municipal Building</b> .....
<b>Points Of Interest</b> .....
<b>Rest Area</b> .....
<b>Scenic Overlook</b> .....
<b>Service Area</b> .....
<b>Ski Area</b> .....
<b>State Police</b> .....
<b>Toll Booth</b> .....
<b>Tourist Info Center</b> .....

LATITUDE AND LONGITUDE GRID SYSTEM IS DISPLAYED BY TWO MINUTE AND 30 SECOND INTERVALS  
74° 20' 00" 74° 22' 30" 74° 25' 00" 74° 27' 30" 74° 30' 00"

40° 20' 00" 40° 22' 30" 40° 25' 00" 40° 27' 30" 40° 30' 00"

gis

**STATE OF NEW JERSEY**  
Governor Philip D. Murphy  
Lt. Governor Steve S. Oliver  
Deputy Governor Kim Guzzo

NEW JERSEY DEPARTMENT OF TRANSPORTATION  
Commissioner Diane Guzzetta-Sacco  
DIVISION OF INFORMATION TECHNOLOGY  
BUREAU OF INFORMATION MANAGEMENT  
GEOGRAPHIC INFORMATION SYSTEMS

IN COOPERATION WITH  
U.S. DEPARTMENT OF TRANSPORTATION  
FEDERAL HIGHWAY ADMINISTRATION