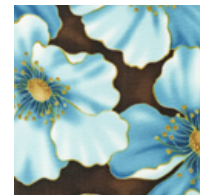
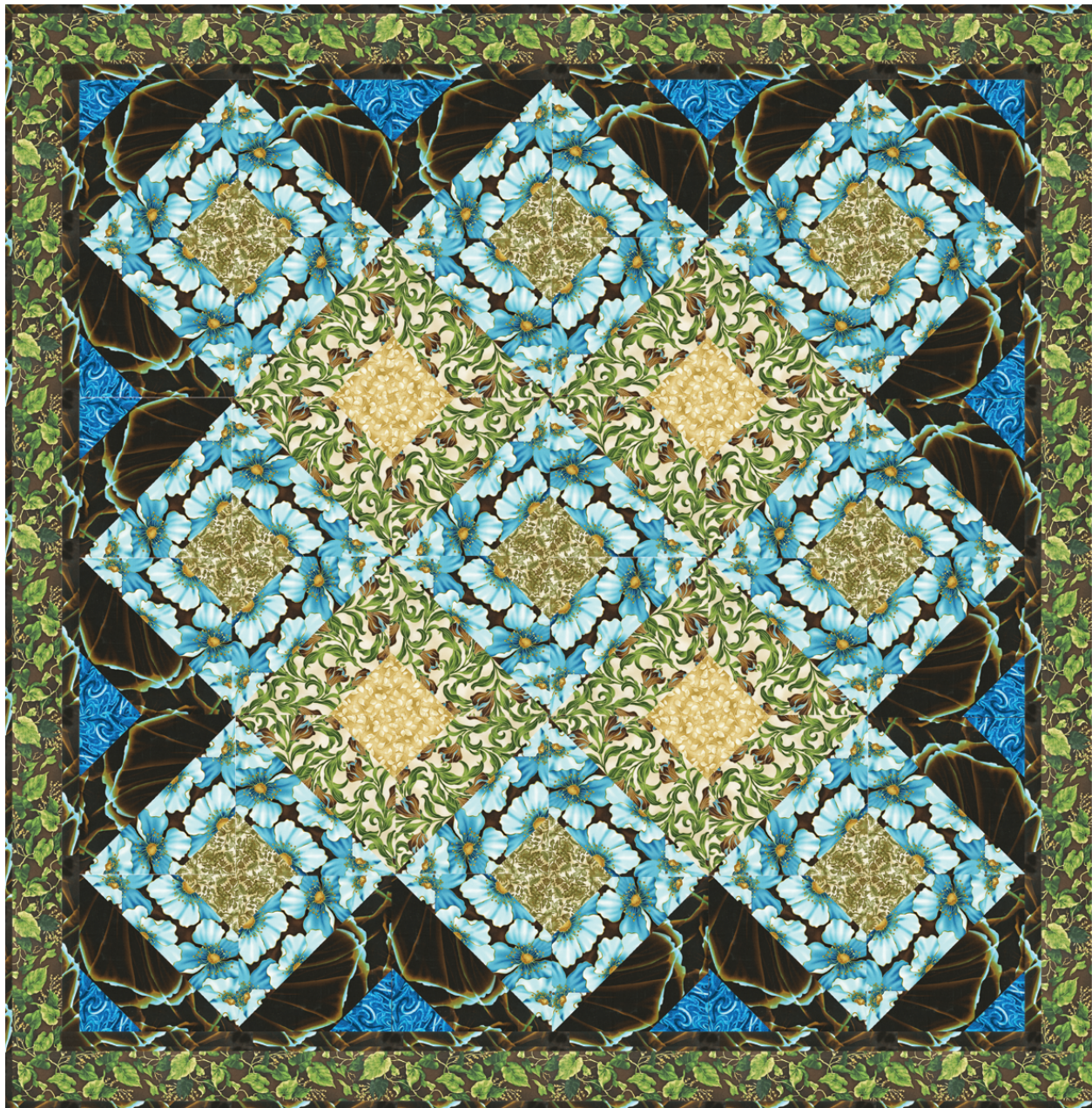


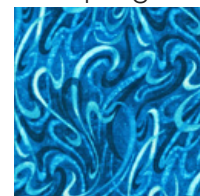
Simpatico

Quilt designed by Heidi Pridemore

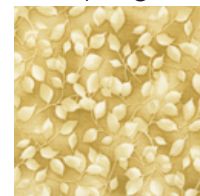
Advanced Beginner Level
Approximately 68" square



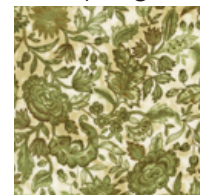
ELJ-8418-192
Spring



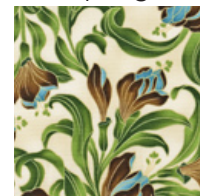
ETJ-8419-192
Spring



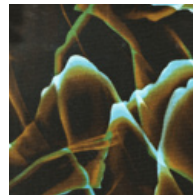
ETJ-8420-192
Spring



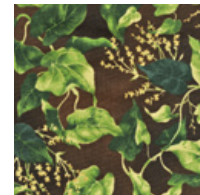
ELJ-8421-192
Spring



ELJ-8422-192
Spring



ETJ-8483-192
Spring



ELJ-8423-192
Spring

download more FREE patterns at:

www.robertkaufman.com

ROBERTKAUFMAN

F A B R I C S

Simpatico Quilt

Quilt designed Heidi Pridemore

Quilt approximate size 68" square

All border strip length measurements are approximate. Please measure your quilt top before cutting the length of each border.

Fabric Requirements

Fabric A: 1-3/4 yard of ETJ 8483-192

Fabric B: 2-1/2 yards or eight repeats of ELJ 8418-192

Fabric C: 3/4 yard of ELJ 8422-192

Fabric D: 1/2 yard of ETJ 8419-192

Fabric E: 5/8 yard of ELJ 8421-192

Fabric F: 1/3 yard of ETJ 8420-192

Fabric G: 7/8 yard of ELJ 8423-192

Backing: 4-1/2 yards of ELJ 8423-192

Cutting:

Cut ten 10-7/8" squares. Cut each square on one diagonal. Cut six 1-1/2" x width of fabric (WOF) strips. Piece the strips together to make two 1-1/2" x 62-1/2" strips and two 1-1/2" x 60-1/2" strips. Cut seven 2-1/4" x WOF strips for the binding.

Cut eight WOF strips following the Fabric's repeat. Stack the repeats into two piles of four strips. From each stacked strips cut four sets of four 10-7/8" blocks. You will need five sets of squares total. Keep each set together and cut each set on one diagonal to make ten triangle sets.

Cut eight 10-7/8" squares. Cut each square on one diagonal to make sixteen triangles.

Cut twenty- 4-1/2" squares.

Cut thirty-six 4-1/2" squares.

Cut sixteen 4-1/2" squares.

Cut eight 3-1/2" x WOF strips. Piece the strips together to make two 3-1/2" x 68-1/2" strips and two 3-1/2" x 62-1/2" strips for the Outer Border.

Cut and sew the backing into one 76" square for the backing.

Assembly Instructions: Make sure to keep the Fabric B triangles in their individual sets throughout the assembly instructions.

- 1) Place one 4-1/2" Fabric E square on the right angle corner of one Fabric B triangle (Fig. 1). Sew across the diagonal of the 4-1/2" square (fig.1). Flip open the triangle formed and press. Cut the excess fabric away from the back leaving a 1/4" seam allowance. Repeat with the remaining Fabric B triangles, making sure to keep them together in their individual sets.

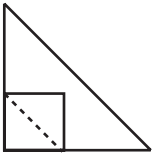


Fig. 1

- 2) Place one 4-1/2" Fabric D square on the right angle corner of one Fabric A triangle (Fig. 1). Sew across the diagonal of the 4-1/2" square (fig.1). Flip open the triangle formed and press. Cut the excess fabric away from the back leaving a 1/4" seam allowance. Repeat with the remaining Fabric A triangles.

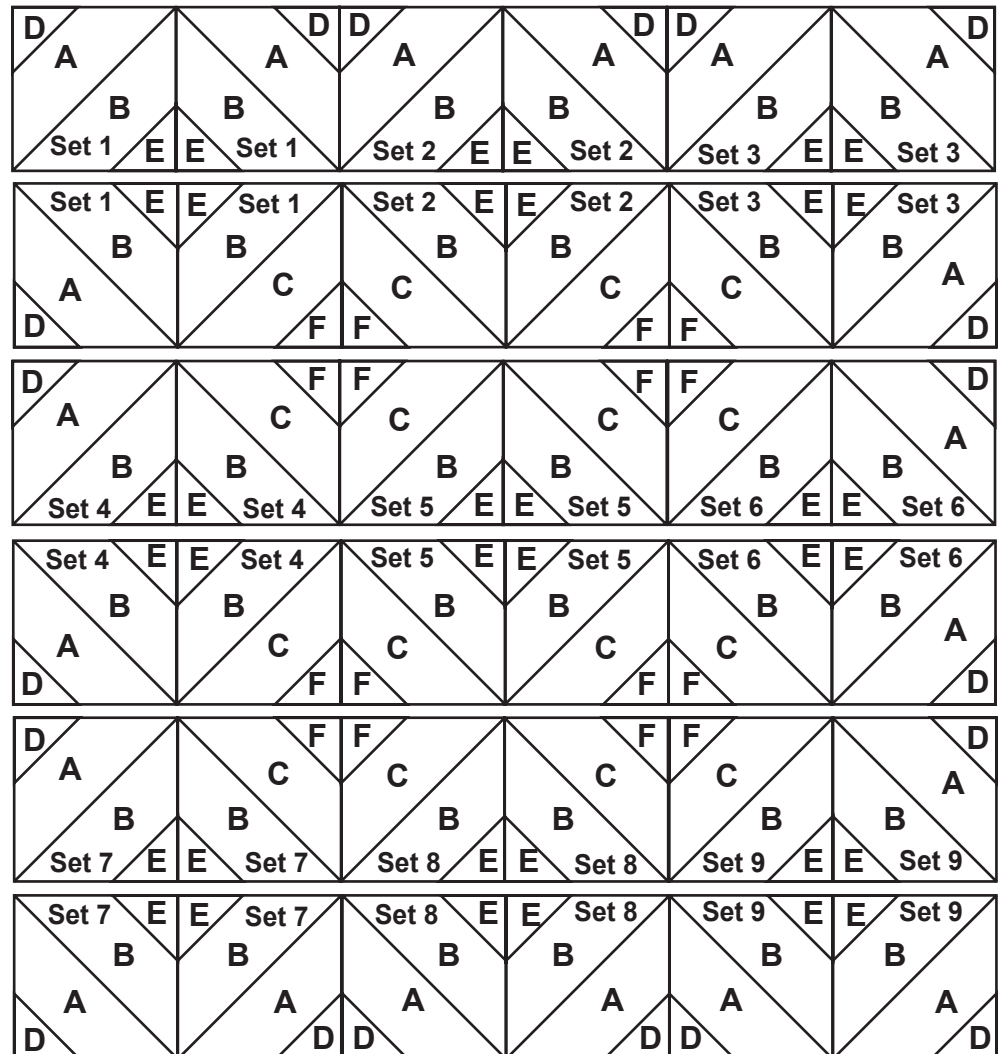
- 3) Place one 4-1/2" Fabric F square on the right angle corner of one Fabric C triangle (Fig. 1). Sew across the diagonal of the 4-1/2" square (fig.1). Flip open the triangle formed and press. Cut the excess fabric away from the back leaving a 1/4" seam allowance. Repeat with the remaining Fabric C triangles.

- 4) Follow the quilt top layout to assemble the triangles. Keep the Fabric B triangles in their sets as labeled on the layout. NOTE: You will have one extra set. Sew the triangles together to make thirty-six blocks.

- 5) Sew together six blocks to make one row. Repeat to make the six rows. Sew the rows together to make the quilt top.
- 6) Sew one 1-1/2" x 60-1/2" Fabric A strip to each side of the quilt top. Sew one 1-1/2" x 62-1/2" Fabric A strips to the top and bottom of the quilt top.

- 7) Sew one 3-1/2" x 62-1/2" Fabric G strip to each side of the quilt top. Sew one 3-1/2" x 68-1/2" Fabric G strip to the top and bottom of the quilt top.

- 8) Layer, quilt and bind as desired.



Quilt Top Layout