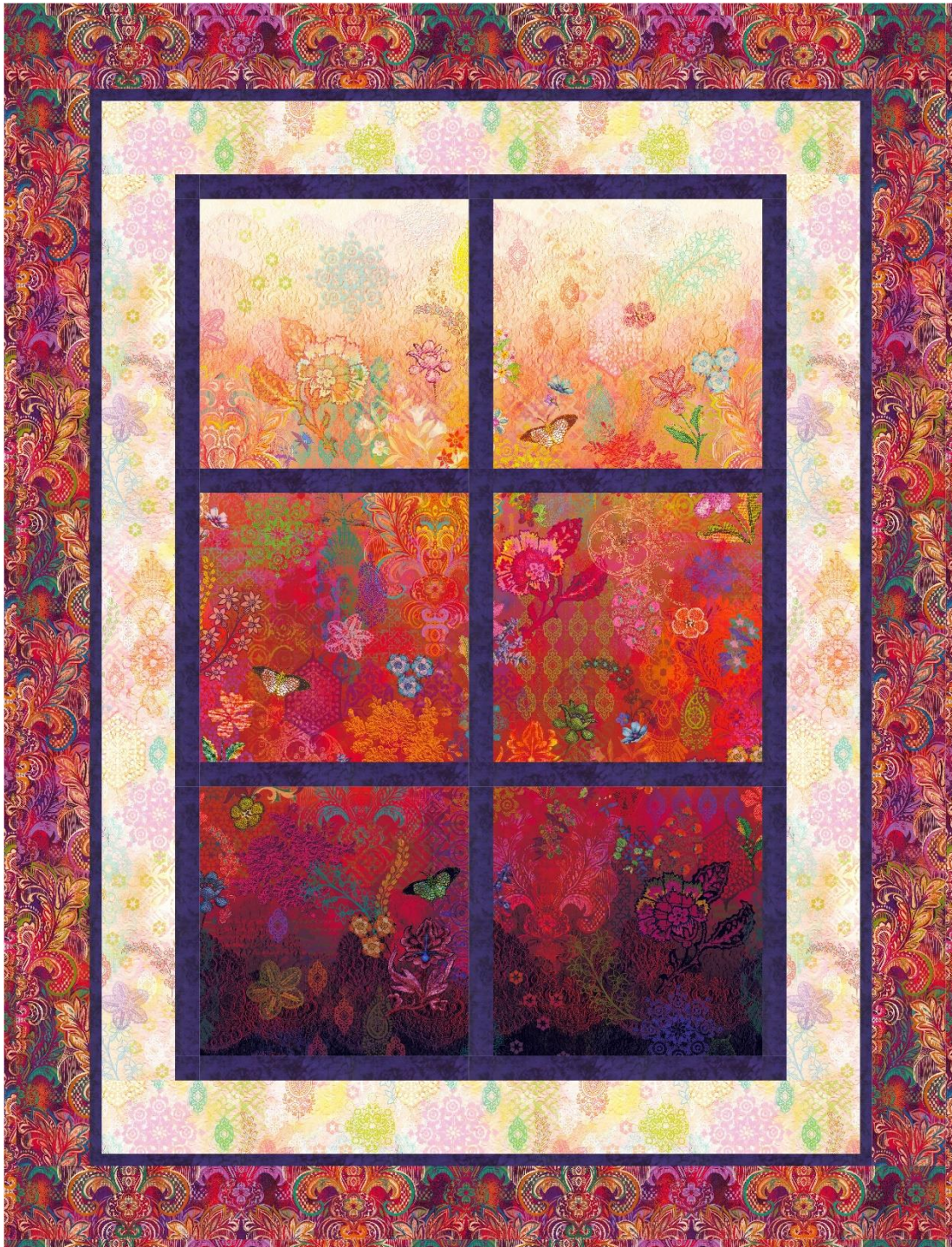


Room With a View

Quilt design by Diane Nagle

38" x 50"



"Featuring fabrics from Arabesque for RJR Fabrics"

Arabesque Room With a View pattern instructions

Designed by Diane Nagle

Cutting: *It is helpful to label your cut pieces by block and size. **Read all instructions before you begin.***

Fabric A: Fussy cut (6) 11 ½" squares, using the heavy floral for the bottom squares, and the lighter background colors for the top 2 squares. Make the middle squares flow between the other squares (see cover photo).

Fabric B: (7) 1 ½" x 42" strips; cut into (2) 1 ½" x 35 ½" strips, (2) 1 ½" x 23 ½" strips, (3) 1 ½" x 11 ½" strips and (2) 1 ½" x 25 ½" strips.

(4) 1" x 42" strips. Sew end to end and cut (2) 1" x 43 ½" strips and (2) 1" x 32 ½" strips.

Fabric C: (4) 3 ½" x 42" strips; cut into (2) 3 ½" x 37 ½" strips and (2) 3 ½" x 31 ½" strips.

Fabric D: (5) 2 ½" x 42" Binding strips

(4) 3 ½" x 42" strips. Sew end to end and cut (2) 3 ½" x 44 ½" strips and (2) 3 ½" x 38 ½" strips.

Quilt assembly

1. Choose the 2 Fabric A 11 ½" squares for the top row. Sew one to the left long side of a Fabric B 1 ½" x 11 ½" strip to make Row 1.

Row 1 →



2. Repeat Step 1 using the 2 Fabric A 11 ½" squares chosen for Row 2.

Row 2 →



3. Repeat Step 1 using the 2 Fabric A 11 ½" squares chosen for Row 3.

Row 3 →



Step 5 Quilt Center ↑

4. Sew a Fabric B 1 ½" x 23 ½" strip to the bottom of Row 1. Repeat for Row 2.
5. Sew Rows 1-3 together from top to bottom to connect the rows and complete the quilt center.

Inner Border:

6. Sew a Fabric B 1 ½" x 35 ½" strip to both sides of the quilt. Sew a Fabric B 1 ½" x 25 ½" strip to the top and bottom of the quilt to complete the quilt center.

Border 2:

7. Sew a Fabric C 3 ½" x 37 ½" strip to both sides of the quilt. Sew a Fabric C 3 ½" x 31 ½" strip to the top and bottom of the quilt.

Border 3:

8. Sew a Fabric B 1" x 43 ½" strip to both sides of the quilt. Sew a Fabric B 1" x 32 ½" strip to the top and bottom of the quilt.

Outer Border:

9. Sew a Fabric D 3 ½" x 44 ½" strip to both sides of the quilt. Sew a Fabric D 3 ½" x 38 ½" strip to the top and bottom of the quilt.
10. Layer quilt with batting and backing, quilt as desired and bind using the Fabric D 2 ½" binding strips.

Room With a View

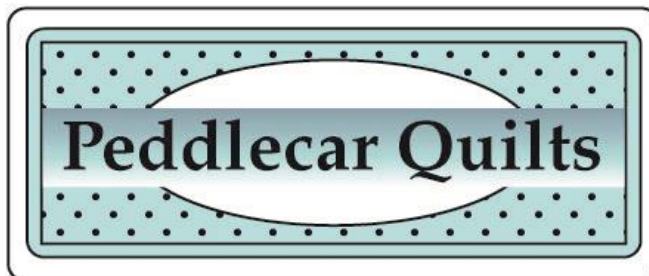
Fabric Collection “Arabesqie” for RJR Fabrics

Quilt design by Diane Nagle • Quilt size 38” x 50” • Block size: 11”

Yardage

	Style	Amount	Used for
Fabric A	3395-001 Fanciful Flourish-pomegranate	1 yard	Fussy cut blocks
Fabric B	4758-105 Purple Majesty	5/8 yard	Sashing, borders
Fabric C	3390-001 Lacery-jasmine	½ yard	Border 2
Fabric D	3391-001 Silk Scarf-pomegranate	7/8 yard	Outer Border, binding
Backing	Fabric of choice	1 ½ yards	

*No portion of this pattern may be copied or otherwise reproduced without the consent of Diane Nagle.
This pattern is copyrighted. ©2016*



Peddlecar Quilts

By Diane Nagle

2571 Starlight Valley

Henderson, NV 89044

702-354-8536

inagle4@cox.net

www.facebook.com/peddlecarquilts

©All Rights Reserved 2017