

# North Liverpool Support Directory



## Contents

### Food Support Services

- Food Banks
- Food Pantries
- Community Shops and Food Stores
- Additional Support
- Community Groups

### Furniture Resources

- Charity Shops
- Charities
- Resources

### Cost of Living Support

- Council Support
- Libraries
- Debt Support Services
- Community Groups and Organisations
- Fuel and Energy Support

### Welcoming Spaces

- Community hubs

### Digital Inclusion Support

- National Organisations
- Organisations and groups
- Libraries

### Young People Services

- Children's Centres
- Youth Services
- Family Support

### Older People Services

- Local Support Services
- Local Activity Groups

### Mental Health and Wellbeing Support

- National Support
- Support Groups

### Disability Support

- National Support
- Local Support

### Domestic Abuse Services

- National Support
- Local Services

### Migrant and Multi-Cultural Support

### Additional Support Services

- LGBTQ Services
- Sexual Violence Support
- Hate Crime

# Riverside Support Services



## **ASB, hate crime and domestic abuse**

Our focus is to make sure all of our customers feel safe and have the support they need. We want our neighbourhoods to be safe places for everyone. We won't tolerate behaviour that prevents our customers feeling secure in their home and their neighbourhood.

To find out more about what support is available or to report incidents please visit <https://www.riverside.org.uk/you-your-home/asb-hate-crime-and-domestic-abuse/hate-crime/>

## **Money and benefit welfare advice**

Our Money Advice Team are specialists in assisting and advising with Welfare Benefits. They can help you to make a claim, submit an appeal if you have been refused, explain how the different types of Benefits work and ensure that you are receiving your full entitlement.

For benefit advice please visit <https://www.riverside.org.uk/you-your-home/money-advice/benefit-advice/>  
For support from our money advisors please visit <https://www.riverside.org.uk/you-your-home/money-advice/debt-advice/>

## **Energy and heating**

Heating your home can be a real cost pressure. Here you can find guidance around keeping your costs down while keeping your home warm and free of damp.

For support from our Affordable warmth Team please visit <https://www.riverside.org.uk/you-your-home/energy-and-heating/affordable-warmth-team/>

## **Employment and Training**

Our Employment and Training Team provides free support to anyone living in a Riverside home. The team offer a tailored service for each person we work with. So whether you're a young person looking for a first job, would like to gain a qualification or are planning for longer term – we are here to help!

We can help support you in

- Getting back to work if you're unemployed, disabled or have a criminal record
- Help with searching for jobs, CV writing and interview techniques to help secure your next role
- Accessing funding to support apprenticeships, learning and qualifications
- Working with you to become self-employed or start your own business

To find out more visit <https://www.riverside.org.uk/you-your-home/employment-training/> or email

## **Safety and Support**

We take our responsibility to make sure you are safe and comfortable in your home very seriously. Find out about asbestos, water and fire safety as well as advice on domestic abuse and report nuisances here.

<https://www.riverside.org.uk/you-your-home/safety-support/>

# Food Support Services in North Liverpool



## Food Banks

### **St Andrew's Community Network**

Clubmoor Community Centre, 16 Larkhill Lane,  
Liverpool, L13 9BR  
0151 226 3406 [food@standrewslive.org.uk](mailto:food@standrewslive.org.uk)

### **Good Shepherd Church**

Lower House Ln, Liverpool L11 2SF  
**Open Wednesday 9.30 am to 11.30 am**

### **Christ Church Anfield**

157 Hartnup St Liverpool L5 1UW  
**Open Tuesday 10 am to 12 pm**

### **St Christophers Church**

Lorenzo Drive, Norris Green L11 1BQ  
**Open Tuesday 12 pm to 2 pm**

### **All Saints Stoneycroft**

Broadgreen Road Liverpool L13 4BW  
**Open Thursday 9 am to 12 pm**

### **St John's Church**

Santon Avenue (off Green Lane) L13 7HF  
**Open Saturday 10.30 am to 12 pm**

### **St Andrew's Church**

Adshead Road, Liverpool, L13 0AL  
**Open Wednesday 9.15 am to 10.30 am**

### **Kensington & Fairfield**

Fairfield Centre, Sheil Road L6 3AA  
**Open Saturday 10 am to 12 pm**

### **West Everton Community Council**

The Friary Building, Bute Street,  
Liverpool L5 3LA  
**Open Wednesday 2 pm to 3.30 pm**

### **Salvation Army**

Cavendish Dr Liverpool L9 1NB  
**Open Monday 10 am to 12 pm**

### **St Paul's**

Formosa Dr, Liverpool, L10 7LD  
**Open 12 pm to 1.30 pm**

### **Walton Cornerstone**

2 Liston St, Liverpool L4 5RT  
**Open Tuesday 9.30 am to 12 pm**

## North Liverpool - Pantries

### **St Marys Millennium Centre**

Meadow Lane, West Derby, Liverpool L12 5EA  
Weekly Fee £3.50  
**Open Friday from 10am**

### **Ask Pantry**

ASK Community Shop, 300 Kensington  
Liverpool, L7 2RN  
Weekly Fee £3.50  
**Open Wednesday 1.30 pm to 3.00pm**

### **Liverpool The Blue Base**

The Blue Base Salop Street, Liverpool, L4 4BZ  
Weekly Fee £3.50  
**Open Thursday 10 am to 12 pm**

### **Holy Trinity Pantry**

Holy Trinity Church (Breck Road Entrance) 3  
Richmond Park  
Anfield Liverpool L6 5AA  
Weekly Fee £3.50  
**Open Monday 10 am to 12pm**

### **West Everton Pantry**

The Friary Centre, Bute Street, Liverpool,  
L5 3LA  
**Open Friday 10 am to 1 pm**

# Food Support Services in North Liverpool



## **Kensington Pantry**

Kensington Fields Community Association  
Low Hill Kensington Liverpool L7 8TQ

Weekly Fee £3.50

**Open Tuesday 12 pm to 2 pm**

## **Nugent Pantry**

St Anne's Church, Overbury Street, Liverpool  
L7 3HJ

Weekly Fee £3.50

**Open Tuesday 1 pm to 3 pm**

## **St Andrew's Pantry**

Adshead Road Entrance, Clubmoor, Liverpool  
L13 0AL

Weekly Fee £3.50

**Open Wednesday 9.15am to 10.45 am**

## **St George's Pantry**

Heyworth Street, Everton, Liverpool, L5 3QG

Weekly Fee £3.50

**Open Friday 9 am to 11 am**

## **Vauxhall Pantry**

Vauxhall Neighbourhood Council, Silvester St  
Liverpool, L5 8UX

Weekly Fee £3.50

**Open Friday 10 am to 12 pm**

## **Christ Church Norris Green Pantry!**

Christ Church Cabin, Sedgemoor Road  
Liverpool, L11 3BR

Weekly Fee £3.50

**Open Tuesday 1.30 am to 12 pm and 12.30  
pm to 2 pm**

## **Our House Walton Hope Pantry**

15 Heathcote Road, Walton, L4 6XB

Weekly Fee £3.50

**Open Thursday 12 pm to 4 pm**

## **L6 Centre**

99 Queens Road, Everton, L6 2NF

**Open daily**

## **The Joseph Lappin Centre**

Mill Lane, Old Swan, Liverpool, L13 5TF

Weekly Fee £3.50

**Open Tuesday 12 pm to 2 pm**

## **Big Help Project**

Marybone Youth Centre, Addison Way L3 2EW

Weekly Fee £3.50

**Open Monday 1pm to 4pm**

## **Micah Liverpool Community Market**

C3 Church in Devon Street

Weekly Fee £1.50

**Open Friday 10.30 am to 12.30 pm**

## **Liverpool Lighthouse Bliss Market**

Oakfield Road, Anfield, Liverpool, L4 0UF

Weekly Fee £3.50 to £5

**Open Wednesday and Thursday 12 pm to 3 pm**

## **Anfield Saint Columba Pantry**

Anfield, Pinehurst Road Anfield Liverpool, L4 2TZ

Weekly Fee £3.50

**Open Friday 9.30 am to 11.30 am.**

## **Flowers Food Pantry Citron Close**

1 Citron Close, Walton, Liverpool, L9 1LG

Weekly Fee £3.50

**Open Wednesday 2.30 pm to 4.30 pm**

## **Fazakerley Community Federation 'Fed Club' pantry**

Formosa Drive, Fazakerley, Liverpool, L10 7LQ

Weekly Fee £3.50

**Open Tuesday 10 am to 12 pm**

# Food Support Services in North Liverpool



## **Croxteth Family Matters - Food Pantry**

Mossway Hall, 35 Moss Way, Liverpool, L11 0BL  
Weekly Fee £3

**Open Thursday 9am to 12pm and 12.30-3pm  
Friday 11am to 1pm**

## **Columba's Kitchen**

76 Pinehurst Rd, Anfield, Liverpool L4 2TZ, UK  
Weekly Fee £3

**Open Friday 9.15 am to 11.30 am**

## **Big Help Food Club - The Drive Dovecot**

The Drive, 235A Finch Lane, Dovecot, L14 4AE  
Weekly Fee £3.50

**Open Wednesday 12 pm to 3 pm**

## **The Breckfield Centre (BNENC)**

The Breckfield Centre, Breckfield Road North,  
Everton, Liverpool, L5 4QT

**Open Monday to Friday, 9.30 am to 4.30 pm**

## **Community Food Stores**

### **New Beginnings Improving Lives CIC:**

Community Food Store  
NBIL Community Store, 63 Rocky Lane Anfield  
L6 4BB  
Weekly Fee £5

**Open Wednesday, Thursday and Friday  
9.30am to 5pm**

### **Walton Vale Community Shop**

105 Walton Vale Liverpool L9 4SR.  
Weekly Fee £3.50 - £5

**Open Tuesday 1:30 to 3:30pm**

### **Community Shop Kirkdale**

211 Walton Road, Liverpool L4 4AJ  
Monday to Friday 9 am to 5 pm  
Saturday 9 am to 3 pm

**08000246691 info@companyshop.ltd.uk**

## **Liverpool Community Grocery**

Hillsong Church, 7 Mann Street, Liverpool,  
L8 5AF

**Open Monday to Friday 9.30 am – 3.30pm**

## **Community Cafes**

### **Places of Welcome Community Cafe**

Offer a free hot meal, plenty of tea and coffee, and  
a very warm welcome.

Christ Church Cabin, 40 Sedgemoor Road,  
Norris Green, L11 3BR

**Open Tuesday 12.30 pm to 2.30 pm**

### **Aplace2B**

Well-being cafe with mental health support  
and sign posting. All welcome.

St Cuthbert's Church, Langley Close,  
Liverpool, L12 0NB

**Open Thursday 11.30 am to 2.30 pm**

### **The Opening Doors Project**

A food hub and community kitchen where  
members of the community and surrounding  
areas can receive free 2 course hot or cold  
meals and a food parcel (upon request) in a  
warm, safe space. Various activities are also  
delivered each day.

65 Fazakerley Rd, Liverpool L9 2AJ,

**Open Monday, Tuesday, Wednesday,  
Thursday 10 am to 2 pm**

### **FoodCycle Tuebrook and Old Swan**

The Old Library, Green Lane, L13 7EB

To find out more visit

<https://foodcycle.org.uk/location/foodcycle-liverpool-old-swan/>

**Open Thursday 7 pm**

# Food Support Services in North Liverpool



## Community Gardens

### **Croxteth Community Garden**

Willow Way/Petherick Road, Croxteth,  
Liverpool, L11 0AN  
croxtethcommunitygarden@yahoo.com

### **Friends of Walton Hall Park**

Walton community garden 1 Blackthorne  
Road Walton hall park L49AB  
<https://waltonhallparkcommunity.org/>  
**Open Monday, Wednesday, Friday,  
Saturday and Sunday 10 am to 4 pm**

### **Friends of Norris Green Park**

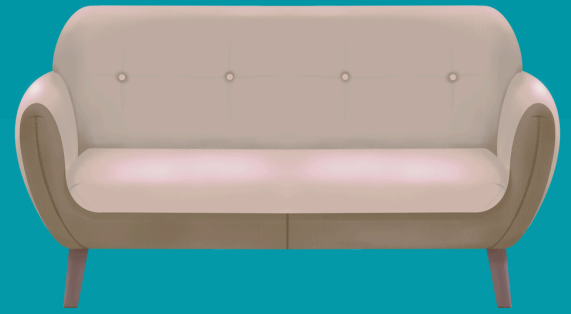
A community hub where local people can  
grow crops, which are then available to  
harvest throughout the year. Family growing  
and cooking sessions are also available.  
Norris Green Park Liverpool, Broad Ln,  
Liverpool L11 1AW  
07427484521  
**Open Monday and Wednesday 10 am to  
1pm, and Saturday 10 am to 3 pm**

## Mobile/Traveling Services

### **Queen of Greens**

Queen of Greens bus brings affordable fresh  
fruit and vegetables to communities across  
Liverpool and Knowsley  
<https://www.feedingliverpool.org/community-food-spaces/queen-of-greens-bus-stop-map/>

# Furniture Support in North Liverpool



## Charities

### **Bulky Bobs Furniture World**

129-139 London Road, Liverpool, L3 8 JA  
**0151 305 5200**

### **Big Help Project**

Offers a wide range of support  
212 Boaler Street Liverpool L6 6AE  
Free Phone 0808 275 9925  
**Hello@bighelpproject.com**

### **Recipro (UK) Ltd**

Work with suppliers and contractors, who donate unwanted, surplus building materials to which they can sell on at hugely discounted rates  
Unit 2 Britannia House, Dock Road, CH41 1DF  
**0151 639 0651**

## Furniture Charity Shops

### **British Heart Foundation Tuebrook Furniture & Electrical Store**

509 West Derby Road, Tuebrook, L6 4BW  
**0151 515 4460**

### **Barnardo's Furniture Stores**

### **Wavertree Donation Centre**

Unit 27 Wavertree Road, Wavertree Retail Park, Liverpool, L7 5LZ  
**0151 7340932**

### **Walton Road Donation Centre**

162 Walton Road, Walton, Liverpool, L4 4AZ  
**0151 2077222**

### **Church Road Donation Centre**

Units 2-3 Penny Lane Retail Park, Church Road, Allerton, Liverpool, L15 9EB  
**0151 7344898**

### **Emmaus Merseyside Charity Superstore**

42-44 Sandy Rd, Seaforth, Liverpool L21 3TW  
**0151 928 1588**

### **Oxfam Smithdown Road**

609-613 Smithdown Road Liverpool, L15 5AG  
**0151 733 6641**

## **Facebook Groups**

There are several groups on Facebook that offer free or low cost furniture.

These include:

**People Help The People (Liverpool)**  
**Liverpool FREEcycle**  
**Everything's free Liverpool**

## Resources

### **Reuse Network**

Reuse Network supports reuse charities across the UK to help them alleviate poverty, reduce waste and tackle climate change.

**<https://reuse-network.org.uk/>**

### **Second Hand Furniture Websites**

Facebook Market Place and Groups  
Gumtree  
FreeCycle  
Pre-Loved  
Freeads  
VivaStreet  
Freegal

# Cost of Living Support in North Liverpool



## Council Support

### **Sustainable Warmth Fund grant**

The Sustainable Warmth Fund is a government scheme that the Liverpool City Region Combined Authority has secured for local residents to make homes greener and warmer. It is also known as the Green Homes Grant.

**Search sustainable warmth grant on the Liverpool City Council website to apply**

### Help with Council Tax debt and managing money.

**Citizens Advice Liverpool** - 0300 330 1196 or WhatsApp and SMS: 07468 533492

**Money Advice Service** - 0300 500 5000

**National Debt Line** - or call 0808 808 4000

### **Benefits maximisation team**

<https://liverpool.gov.uk/benefits/advice-and-support/benefits-advice/>

## Libraries

### **Spellow Library**

County Road, L4 3QF  
**0151 233 3069**

### **Breck Road Community Library**

8-10 The Mall Breck Road, L5 6PX  
**0151 233 3069**

### **Fazakerley Community Library**

Formosa Drive, L10 7LQ  
**0151 792 0958**

### **Norris Green Library**

Townsend Avenue, L11 5AF  
**0151 233 3069**

### **Walton Library (Life Rooms)**

Evered Avenue L9 2AF  
**0151 478 6556**

## Debt Support Services

### **Liverpool Community Advice**

1st Floor 151 Dale Street Liverpool, L2 2JH  
0151 237 2679

**Inquiries@liverpoolcommunityadvice.org.uk**

### **North Liverpool Citizens Advice Walton**

37-39 Walton Rd, Liverpool, Merseyside, L4 4AD  
**0808 278 7840**

**<https://www.citizensadvice.liverpool.org.uk/>**

### **Raise**

286 Scotland Road, Liverpool, L5 5AE

**0151 459 1556 admin@raiseadvice.org.uk**

### **Vauxhall Law Centre**

VNC Millennium Centre, Blenheim Street, Liverpool, L5 8UX

**0151 360 7777 advice@vauxhalllawcentre.org.uk**

### **ST Andrews Community Network**

16 Larkhill Lane, Clubmoor, Liverpool L13 9BR

**0151 226 3406**

### **Merseyside Law Centre**

35-37 Bold Street, Liverpool, United Kingdom, L1 4DN  
**0151 709 0504**

### **Big Help Group**

HOPE HOUSE, 212 Boaler Street, Liverpool, L6 6AE

**0151 482 6089 contact@bighelpgroup.com**

### **Croxteth Family Matters**

**0151 476 0523 or 0151 281 4529**



## Credit Unions

### **Central Liverpool Credit Union**

141 Park Street, Liverpool, L8 6QF  
centralcu.co.uk

**0151 708 5515** [enquiries@clcu.co.uk](mailto:enquiries@clcu.co.uk)

### **Enterprise Credit Union**

5-7 Page Moss Lane, Liverpool, L14 0JJ  
enterprisecreditunion.org

**0151 482 0177**

[contact@enterprisecreditunion.org](mailto:contact@enterprisecreditunion.org)

### **Lodge Lane and District Credit Union**

81 Lodge Lane Liverpool Liverpool L8 0QE

**0151 734 2561**

[lodgelane.creditunion@phonecoop.coop](mailto:lodgelane.creditunion@phonecoop.coop)

### **Partners Credit Union**

2nd Floor, LCVS, 151 Dale Street, L2 2AH  
partnerscreditunion.co.uk

**0151 258 1014**

[enquiries@partnerscreditunion.co.uk](mailto:enquiries@partnerscreditunion.co.uk)

### **Riverside Credit Union**

Garston Business Centre, 2 – 4 St Mary's Road  
Garston, Liverpool, L19 2RY  
riversidecreditunion.co.uk

**0151 448 0565**

[info@riversidecreditunion.co.uk](mailto:info@riversidecreditunion.co.uk)

## Local Support

### **St Christopher's Church: Debt Advice and Foodbank**

Tuesday 10 am to 2 pm at St. Teresa's Parish House.

**Feel free to drop in or call 0151 270 1688 or email [norrisgreendebtadvice@yahoo.co.uk](mailto:norrisgreendebtadvice@yahoo.co.uk)**

### **Greater Merseyside Money Advice Partnership**

**0808 278 7839**

### **St Luke West Derby - Debt advice**

Princess Drive West Derby, Princess Drive, L14 8XG

**0151 203 6267**

## **Households into Work**

Help into employment

[hiw@liverpoolcityregion-ca.gov.uk](mailto:hiw@liverpoolcityregion-ca.gov.uk)

## Fuel and Energy Support

### **Energy Projects Plus**

Free and impartial advice to help you save money on your energy bills.

0800 043 0151

<https://www.epplus.org.uk/>

### **British Gas Energy Trust**

<https://britishgasenergytrust.org.uk/>

### **Scottish Power Hardship Fund**

<https://www.scottishpower.co.uk/support-centre/help-paying-your-bill/hardship-fund>

### **E.On Energy Fund**

<https://www.eonenergyfund.com/>

### **Support from Banks**

Most banks offer help for those struggling during the current cost of living surge, with most stating that they plan to ramp up their guidance and support services.

## **National Debt services**

### **Turn2us**

Turn2us is a national charity providing practical help to people who are struggling financially.

**0808 802 2000** [www.turn2us.org.uk](http://www.turn2us.org.uk)

### **National Debtline**

National Debtline is a debt advice charity run by the Money Advice Trust. We are a free and confidential debt advice service for people in England, Wales and Scotland.

**0808 808 4000** [www.nationaldebtline.org](http://www.nationaldebtline.org)

# Welcoming Spaces in North Liverpool



## Welcoming Spaces

### **Holy Name**

2 Moss Pits Lane Liverpool , L10 9LG  
**0151 476 0289** [holyname@rcaol.org.uk](mailto:holyname@rcaol.org.uk)

### **The Salvation Army, Liverpool Walton**

95 Cavendish Drive Liverpool, England, L9 1HN,  
**0151 525 4785**  
<https://www.salvationarmy.org.uk/>

### **Saint Columbia Anfield**

Pinehurst Avenue Liverpool, L4 7UQ,  
**0151 474 7231**

### **Saint Francis Xavier's Church**

Salisbury Street Liverpool, England, L3 8DR,  
**0151 298 1911** [sfxchurch@rcaol.org.uk](mailto:sfxchurch@rcaol.org.uk)

### **The Old Library**

The Old Library, Green Lane Liverpool, L13 7EB,  
**0151 254 1394** [hello@tol.org.uk](mailto:hello@tol.org.uk)

### **Our Lady of Sorrows**

Pirrie Road Liverpool, England, L9 6AA  
**0151 284 8084** [olos@rcaolp.co.uk](mailto:olos@rcaolp.co.uk)

### **Our Lady Queen of Martyrs**

Stonebridge Lane Liverpool, L11 9AZ,  
**0151 546 3574** [olqom@rcaol.org.uk](mailto:olqom@rcaol.org.uk)

### **Holy Rosary Parish Hall**

Altway Liverpool, England, L10 2LG,  
**0151 526 8468** [holyrosary@rcaol.org.uk](mailto:holyrosary@rcaol.org.uk)

### **Christ Church Walton Breck**

157 Hartnup Street, Liverpool, L5 1UW  
**0151 264 8006**

## Libraries

### **Spellow Library**

County Road, L4 3QF  
**0151 233 3069**

### **Breck Road Community Library**

8-10 The Mall Breck Road, L5 6PX  
**0151 233 3069**

### **Fazakerley Community Library**

Formosa Drive, L10 7LQ  
**0151 792 0958**

### **Norris Green Library**

Townsend Avenue, L11 5AF  
**0151 233 3069**

### **Walton Library (Life Rooms)**

Evered Avenue L9 2AF  
**0151 478 6556**

### **Liverpool Lighthouse**

Liverpool Lighthouse, Oakfield Road, Anfield, L4 0UF  
Free community lunch Tuesday and Wednesday  
12 pm to 12.30 pm and Thursday 1 pm to -1.30 pm  
**0151-476-2342** [info@liverpoolighthouse.com](mailto:info@liverpoolighthouse.com)

### **Opening Doors Project Rice Lane**

St Nathanael's Church, Fazakerley Road L9 2AJ  
Free Community Lunch & Quiz Thursdays 12 pm to  
2pm  
**07557 335188**  
[Contactus@opendoorsproject.org.uk](mailto:Contactus@opendoorsproject.org.uk)

### **Croxteth Gems Community Association**

Armill Road, Liverpool, L11 4TR  
Friday hot drink 50p and bingo 12 pm to 2 pm  
**0151 547 2664**

# Digital Inclusion Support in North Liverpool



## Learning

### **Learn My Way**

Learn My Way is a website of free online courses for beginners to develop digital skills to make the most of the online world.

[www.learnmyway.com](http://www.learnmyway.com)

### **Barclays Digital Wings**

Barclays Digital Wings platform offers free online digital skills courses from how to stay safe online, use social media, make your business digital and much more. Available to everyone, no eligibility criteria.

<https://digital.wings.uk.barclays/>

### **FutureLearn**

FutureLearn provide a suite of free digital skills courses from digital skills for work and life to advanced skills like web analytics, social media, AI and much more.

[www.futurelearn.com](http://www.futurelearn.com)

## Libraries

Local libraries offer digital skills learning, you can book time on a PC and use their learning resources.

### **Spellow Library**

County Road, L4 3QF  
**0151 233 3069**

### **Breck Road Community Library**

8-10 The Mall Breck Road, L5 6PX  
**0151 233 3069**

### **Fazakerley Community Library**

Formosa Drive, L10 7LQ  
**0151 792 0958**

### **Norris Green Library**

Townsend Avenue, L11 5AF  
**0151 233 3069**

### **Walton Library (Life Rooms)**

Evered Avenue L9 2AF  
**0151 478 6556**

## Organisations and Groups

### **The Life Rooms**

The Life Rooms, Evered Avenue, Walton, L9 2AF  
**0151 478 6556** [liferooms@merseycare.nhs.uk](mailto:liferooms@merseycare.nhs.uk)

### **Everton Development Trust (EDT)**

96 - 98 Great Homer Street , L5 3LF  
**0151 482 2780**

### **Millennium Resource Centre**

Vauxhall Millennium Centre, Blenheim Street,  
Liverpool, L5 8UX  
**07946121798** [joel@scottiepress.org](mailto:joel@scottiepress.org)

### **Irish Community Care**

Liverpool Irish Centre, 6 Boundary Lane, L6 5JG  
**07732901780**

### **Big Help Project**

212 Boaler Street, L6 6AE

### **Vauxhall Neighbourhood Council**

Silvester Street , L5 8SE  
**0151 207 5668**

### **Mersey Youth Support Trust**

The Action Centre, The Old St. Lawrence School,  
Westminster Road, L4 3TQ  
**0151 702 0700**



# Digital Inclusion Support in North Liverpool



## **Bridge Community Centre**

2 Daneville Road, Walton, Liverpool, L4 9RG  
**01517928711** [bridgecentre1@outlook.com](mailto:bridgecentre1@outlook.com)

## **Norris Green Adult Learning Centre**

Clubmoor Childrens Centre, Utting Avenue East,  
L11 1DQ  
**0151 233 1809**

## **CTP Liverpool**

230 Utting Avenue, Liverpool, L4 8SY  
**01512 260029** [lobia@ctpportal.org.test](mailto:lobia@ctpportal.org.test)

## **Liverpool Lighthouse Ltd**

Oakfield Road, Walton, Liverpool, L4 0UF  
01514762342  
[helen.brown@liverpollighthouse.com](mailto:helen.brown@liverpollighthouse.com)

## **Porchfield Community Association**

Porchfield Community Centre, L11 9DT  
**0151 547 4455**

## **Everton in the Community**

The Peoples Hub, 46 Spellow Lane, Liverpool, L4  
4DF  
**07974257509** [adam.howard@evertonfc.com](mailto:adam.howard@evertonfc.com)

## **Citizens Advice North Liverpool**

37 Walton Road, Liverpool, L4 4AD  
01515221400  
[admin@northliverpoolcab.org.uk](mailto:admin@northliverpoolcab.org.uk)

## **Breckfield and North Everton Neighbourhood Council**

The Breckfield Centre, Breckfield Road North,  
Liverpool, L5 4QT  
**01512888400**  
[bob.blanchard@thebreckfieldcentre.com](mailto:bob.blanchard@thebreckfieldcentre.com)

## **Rotunda Ltd**

109 Great Mersey Street, Liverpool, L5 2PL  
**01512072176** [mennis@therotunda.org.uk](mailto:mennis@therotunda.org.uk)

# Riverside

## Youth Provision in North Liverpool



### Children's Centres

#### **Anfield Children's Centre**

Oakfield (Off Oakfield Road), Anfield, Liverpool  
L4 2QG

**0151 233 4001** [anfieldcc@liverpool.gov.uk](mailto:anfieldcc@liverpool.gov.uk)

#### **Vauxhall Children's Centre**

Titchfield Street Liverpool, L5 8UT

**0151 298 2918**

#### **Fountains Children Centre**

Fountains Road, Liverpool L4 1QH

**0151 233 4741**

#### **County Children's Centre**

Arnot Street, Walton, L4 4ED

**0151 233 3760**

#### **Walton Children's Centre**

99 Cavendish Drive, Liverpool, L9 1NB

**0151 233 3760**

#### **Clubmoor and Ellergreen Children's Centre**

Utting Avenue East, L11 1DQ

**0151 233 8500**

[clubmoorchildrenscentre@liverpool.gov.uk](mailto:clubmoorchildrenscentre@liverpool.gov.uk)

#### **Everton Nursery School and Family Centre**

Spencer Street, Liverpool, L6 2WF

**0151 233 1969**

[evertonnsfc@evertoncentre.liverpool.sch.uk](mailto:evertonnsfc@evertoncentre.liverpool.sch.uk)

#### **Fazakerley Children's Centre**

Barlows Lane, Liverpool, L9 9EH

**0151 233 3705**

[fazakerleycc@liverpool.gov.uk](mailto:fazakerleycc@liverpool.gov.uk)

#### **Croxteth Children's Centre**

Parkstile Lane (Our Lady & St Swithin Primary  
School) Liverpool L11 0BQ

**0151 233 3705** [croxtethcc@liverpool.gov.uk](mailto:croxtethcc@liverpool.gov.uk)

### Youth Support Services

#### **Merseyside Youth Association**

Offers a variety of support and activities for young  
people age 11 to 25

65-67 Hanover Street, Liverpool L1 3DY

**0151 702 0700** [admin@mya.org.uk](mailto:admin@mya.org.uk)

#### **Comics Youth**

Offers a range of creative services supporting young  
people aged 8 - 25.

**0151 236 1800** [hi@comicsyouth.co.uk](mailto:hi@comicsyouth.co.uk)

#### **Anfield Sports & Community Centre**

Breckside Park Lower Breck Road Liverpool

Merseyside Liverpool 6 0AG

**01512636186** [reception@anfieldsports.org](mailto:reception@anfieldsports.org)

#### **Everton in the Community - Premier League Kicks**

<https://www.evertoninthecommunity.org/project/s/sport/premier-league-kicks/>

#### **Daisy Inclusive UK**

A variety of activities that support disability children  
and adults.

2 Barnes Street, Everton L6 5LB

**0151 261 0309** [info@daisyuk.com](mailto:info@daisyuk.com)

#### **BNENC Youth Outreach**

Breckfield Centre, Breckfield Road North

Liverpool, L5 4QT

**0151 288 8400**

[receptionist@thebreckfieldcentre.com](mailto:receptionist@thebreckfieldcentre.com)

# Riverside

## Youth Provision in North Liverpool



### **YPAS Young People Advisory Service**

YPAS offers a wide range of support, wellbeing and therapeutic services for children, young people and families in Merseyside.

YPAS North Hub, Croxdale Road West, Liverpool, L14 8YA

**0151 305 2040** [support@ypas.org.uk](mailto:support@ypas.org.uk)

### **Priority Youth**

St Mary's Millennium Centre, Meadow Lane, West Derby, Liverpool, L12 5EA

**07523 650 956** [hello@priorityyouth.co.uk](mailto:hello@priorityyouth.co.uk)

### **Muslim Youth Helpline (MYH)**

**0808 808 2008** [help@myh.org.uk](mailto:help@myh.org.uk)

### **Virtual KEEN**

Inclusive online activities for young people

<https://www.keenuk.org/virtualkeen>

### **Marybone Youth and Community Association**

Marybone Centre, Addison Way, L3 2EW

**0151 236 3865**

[maryboneyouth@btconnect.com](mailto:maryboneyouth@btconnect.com)

### **North Liverpool Regeneration Company**

The Ponnies, 56 Christian Street, L3 3EN

**0151 556 9601** [mainoffice@nrlco.com](mailto:mainoffice@nrlco.com)

### **Rotunda Ltd**

109 - 115 Great Mersey Street Liverpool L5 2PL

**0151 207 2176**

### **Shrewsbury House Youth & Community**

37 Langrove Street, Liverpool, L5 3PE

**0151 207 0725**

### **West Everton Community Council**

The Friary Centre Bute Street, Liverpool L5 3LA

**0151 2820303** [admin@westevertoncc.co.uk](mailto:admin@westevertoncc.co.uk)

### **Liverpool Six Community Association**

99 Queens Road, Liverpool, L6 2NF

**01512601297** [L6centre@aol.com](mailto:L6centre@aol.com)

### **LFC Foundation**

Anfield Sports & Community Centre, Lower Breck Rd, Liverpool L6 0AG

07584396219 / 07864602376

[Francis.Hargreaves@liverpoolfc.com](mailto:Francis.Hargreaves@liverpoolfc.com)

[Karl.Carney@liverpoolfc.com](mailto:Karl.Carney@liverpoolfc.com)

### **Liverpool Lighthouse**

Oakfield Road, Anfield, Liverpool, L4 0UF

**0151 476 2342**

[Matt.rutter@liverpoolighthouse.com](mailto:Matt.rutter@liverpoolighthouse.com)

### **Centre 56**

Rumney Road, Liverpool L4 1UB

**0151 727 1355** [graves@centre56.org.uk](mailto:graves@centre56.org.uk)

### **Rice Lane Community Association**

Rice Lane City Farm Rawcliffe Road L9 1AW

**0151 530 1066** [ricelanecityfarm@hotmail.co.uk](mailto:ricelanecityfarm@hotmail.co.uk)

### **Fazakerley Community Federation**

Adlam Rd, Fazakerley, Liverpool, L9 9ES

**0151 673 1401**

### **The Opening Doors Project**

St Nathanael's Church, Fazakerley Road, Walton L9 2AJ

[referrals@openingdoorsproject.org.uk](mailto:referrals@openingdoorsproject.org.uk)

### **The Quantum Centre**

Unit 1a, Brookfield Drive, L9 7AN

**07932728084** [foznat8@gmail.com](mailto:foznat8@gmail.com)

### **Liverpool Walton Salvation Army and Community Centre**

95 Cavendish Dr, Liverpool L9 1HN

**0151 525 4785**

# Youth Provision in North Liverpool



## **Autism in Motion**

St Georges hub, Waresley crescent L9 6BW  
[aimautism@hotmail.com](mailto:aimautism@hotmail.com)

## **Leisure United Football Hubs**

Long Lane, L9 6AG  
**0151 523 7922**

## **Al-Ghazali Centre: 'Youth Mental Health Support Programme'**

Mental health workshops and activities for young people aged 12 to 18 years.  
Addressing mental health promotion in youth outside of educational settings  
35 Earle Road Liverpool L7 6HA  
**0151 734 3843** [info@alghazalicentre.co.uk](mailto:info@alghazalicentre.co.uk)

## **Autism Adventures Training CIC: 'My Mental Health- What's OK?'**

Project aimed at people with autism to improve understanding of and break down barriers to mental health, as well as providing tools and strategies to manage emotions and feelings  
Addressing mental health promotion in youth outside of educational setting, financial insecurity, debt and loneliness  
[info@liverpoolautismadventures.co.uk](mailto:info@liverpoolautismadventures.co.uk)

## **Croxteth Gems Community Association: 'Taking Care of our Gems'**

Sessions for children & young people including; autism and ADHD-friendly yoga and meditation sessions and art therapy.  
Addressing mental health promotion in youth outside of educational settings  
[michelle@gemscentre.org.uk](mailto:michelle@gemscentre.org.uk)

## **Imagine If Trust: 'The Zone Youth Hub'**

Fun, safe and active sessions for primary school aged children, providing a stimulating environment where children can thrive and grow in confidence.  
147 Lawrence Road, Liverpool, L15 3HA  
[info@imagineiftrust.org](mailto:info@imagineiftrust.org)

## **Priority Youth Project: 'Priority Youth Counselling Support Programme'**

A 1-1 counselling service for children and young people aged 8-19 years.  
St Mary's Millennium Centre, Meadow Lane, West Derby, Liverpool, L12 5EA  
**07523 650 956** [hello@priorityyouth.co.uk](mailto:hello@priorityyouth.co.uk)

## **Valley Community Theatre: 'Arts4Change'**

A range of arts activities and workshops for young people aged 8-25 aimed at addressing a rise in mental health issues.  
Childwall Valley Road, Netherley, L27 3YA  
**0151 488 0364** [info@valleytheatre.co.uk](mailto:info@valleytheatre.co.uk)

## **National Services**

### **National Citizenship Service**

Delivers a range of experiences for young people across the UK. <https://wearencs.com/>  
**0800 197 8010**

### **Duke of Edinburgh**

Delivers a range of experiences for young people across the UK.  
<https://www.dofe.org/>

# Riverside

## Family Support in North Liverpool



### **Baby Basics**

Hope House, Boaler Street, Liverpool L6 6AE  
<https://baby-basics.org.uk/>

### **Baby Basics Liverpool**

178 Queens Drive, Wavertree, Liverpool L15 6XX  
<https://baby-basics.org.uk/>

### **Kindfulness Coffee Club Liverpool**

For more information please contact either  
[Mandy@mykcc.org.uk](mailto:Mandy@mykcc.org.uk) [Zoe@mykcc.org.uk](mailto:Zoe@mykcc.org.uk)

### **Centre 56 Women & Children's Aid Centre**

Here for families in crisis, whatever the situation  
Rumney Road, Liverpool, L4 1UB  
**0151 727 1355** [hello@centre56.org.uk](mailto:hello@centre56.org.uk)

### **Growbaby**

Growbaby provides good quality second-hand clothes and equipment for babies and kids up to age 5. Anyone can use this service and everything is free.

**0151 263 0692**

[info@southliverpoolvineyard.com](mailto:info@southliverpoolvineyard.com)

### **For support during the school holidays**

#### **MPAC**

MPAC have a list of organisations that deliver food support and activities during the school holidays.

To find out more visit:

<https://merseyplay.com/summer-haf-holiday-activities-food-2023/>

### **Period and Hygiene Product Support**

Many food banks, pantries and community centres will have access to free sanitary products.

#### **Bloody Good Period -**

[hello@bloodygoodperiod.com](mailto:hello@bloodygoodperiod.com)

#### **Morrisons - Package for Sandy**

Customers in need can now go to any Morrisons customer service desk nationwide and ask for a package for 'Sandy' or a 'period product pack'. The customers will then be given a free discreet envelope with sanitary products and no questions asked.

**Freedom4Girls** - provides period products to those in Leeds, Sheffield, West Yorkshire, and select other regions of the UK

<https://www.freedom4girls.co.uk/request-products/>

#### **The Trussell Trust**

Search the Trussell trust website to find your local centre.

<https://www.trusselltrust.org/>



# Older People Support in North Liverpool



**Age UK Advice Line** - 0800 678 1602

## **Tax Help for Older People**

01308 488066 [taxvol@taxvol.org.uk](mailto:taxvol@taxvol.org.uk)

**Dementia UK** - 0800 888 6678

## **Re-engage**

Group and one-to-one social activities will help older people connect with others.

**0800 716543**

## **Friends of the Elderly**

Grants to older people living on low incomes.

**0330 332 1110** [hello@fote.org.uk](mailto:hello@fote.org.uk)

## **Omega (befriending service for caregivers / carers)**

Chatterbox Action Against Loneliness telephone chat

**01743 245088** [chatterbox@omega.uk.net](mailto:chatterbox@omega.uk.net)

A Letter from Louise pen pal befriending

**01743 245 088**

[aletterfromlouise@omega.uk.net](mailto:aletterfromlouise@omega.uk.net)

## **Merseyside Fire & Rescue Services: Home Fire Safety Checks**

If you live in Merseyside, you can phone **0800**

**731 5958** for **free** fire safety advice or to request a Home Fire Safety Check visit

## **Merseyside Dementia Friendly Radio**

Independent, online radio station that is run in collaboration with and for the benefit of those who live in the Merseyside area whose lives are affected by dementia. [vianat@mdfr.co.uk](mailto:vianat@mdfr.co.uk)

**07768 139708** [nat@mdfr.co.uk](mailto:nat@mdfr.co.uk)

## **City Wide Support**

### **Liverpool Cares**

Liverpool Cares is a community network of younger and older neighbours hanging out and helping one another in our rapidly changing city. Liverpool Cares,

Studio D, Baltic Creative, 49 Jamaica Street, Liverpool, L1 0AH

**0151 659 1789** [liverpoolcares.org.uk](http://liverpoolcares.org.uk)

### **The Brain Charity**

Helping people with all forms of neurological conditions to lead longer, healthier, happier lives Norton Street, Liverpool, L3 8LR

**0151 298 2999**

### **Bradbury Fields**

services for Blind and Partially Sighted People The Bradbury Centre, Youens Way, Liverpool, L14 2EP.

**0151 221 0888 ext 214**

[jabdullah@bradburyfields.org.uk](mailto:jabdullah@bradburyfields.org.uk)

### **Local Solutions**

Liverpool Carers Centre delivers a city wide community based programme of activities and training that ensures a range of support is available to unpaid carers in Liverpool

**0151 705 2307**

[healthandwellbeing@localsolutions.org.uk](mailto:healthandwellbeing@localsolutions.org.uk)

### **The Cinnamon Trust:**

National charity for elderly or terminally ill people and their pets. Network of volunteers who can visit homebound owners to take dogs for daily walks, foster pet as one of their family when owners face time in hospital, take pets to the vet, by pet food, clean budgie cage.

**01736 757900**

[www.cinnamon.org.uk](http://www.cinnamon.org.uk)

# Older People Support in North Liverpool



## **Everton in the Community**

### **Pass on the memories**

The programme supports people living with dementia as well as their carers to share important memories and create new ones.

[yasmin.wines@evertonfc.com](mailto:yasmin.wines@evertonfc.com)

### **Stand Together**

Stand Together is an opportunity for anyone over 65 to improve their quality of life by making new friends, having fun and enjoying a variety of activities together.

Tuesday and Wednesday from 10.30 am to 12.30 pm at The Blue Base on Salop Street, L4 4BZ.

[neighbourhood@evertonfc.com](mailto:neighbourhood@evertonfc.com)

### **Veterans Project**

Supporting Veterans aged 60+ and their families

Monday 10.30 am to 12.30 pm

[David.curtis@evertonfc.com](mailto:David.curtis@evertonfc.com)

### **Bridge Community Centre**

Bridge Community Centre Daneville Road,  
Liverpool L4 9RG

**0151 792 8711** [bridgecentre1@outlook.com](mailto:bridgecentre1@outlook.com)

### **Our House Walton**

Our House is a community hub based in the heart of Walton, North Liverpool.

15 Heathcote Road, Walton, Liverpool,  
Merseyside L4 6XB

**0151 521 7722**

email [info@ourhouse-walton.co.uk](mailto:info@ourhouse-walton.co.uk)

### **Daisy Inclusive UK**

Supporting disabled and vulnerable people living in the community.

2 Barnes Street, Everton, L6 5LB

**0151 261 0309** [info@daisyuk.com](mailto:info@daisyuk.com)

### **Kitty's Launderette**

Community launderette and social space in the Everton/ Anfield area of Liverpool, run by local residents, offering affordable ecological services; as well as a space for people to gather, talk and learn.

77 Grasmere Street, Everton, Liverpool L5 6RH

**0151 260 8951** [info@kittyslaunderette.org.uk](mailto:info@kittyslaunderette.org.uk)

### **Healthiness - exercises and fitness classes**

Anfield Sports and Community Centre, Lower Breck Road, Liverpool, L6 0AG

**0151 728 8874** [info@healthinessltd.co.uk](mailto:info@healthinessltd.co.uk)

### **Age Concern Liverpool & Sefton: Friendship service**

Friendship service for people aged 50+ in Liverpool and Sefton

**0151 330 5678**

[mail@ageconcernliverpoolandsefton.org.uk](mailto:mail@ageconcernliverpoolandsefton.org.uk)

### **Rainbow 50 Plus Community**

259-261 Boaler Street, Liverpool, L6 9DH

**07795 433970/07717 398475**

[dee@therainbowcommunity.org](mailto:dee@therainbowcommunity.org)

### **Smile TLC LTD (supports those affected by dementia)**

Organises social events and support to people living with dementia and their family members.

**0151 374 0112** [support@smile-tlc.co.uk](mailto:support@smile-tlc.co.uk)

### **Sola Arts - Art therapy for refugees, BME communities and people with dementia**

Sola Arts, Toxteth Town Hall, 15 High Park Street, Liverpool, L8 8DX

**0151 726 8440** [adele@solaarts.org](mailto:adele@solaarts.org)

# Mental Health and Wellbeing Support in North Liverpool



## National Support - Anxiety and Depression Support

### **Calm**

CALM's helpline and live chat are open from 5pm to midnight everyday. 365 days a year  
**0800 58 58 58**

### **Samaritans**

Contact us if you're having a difficult time or if you're worried about someone else.  
**jo@samaritans.org or call 116 123**

### **Shout free 24-hour text help**

Text SHOUT to 85258 Shout is the UK's first 24/7 text service, free on all major mobile networks, for anyone in crisis anytime, anywhere.

**It's a place to go if you're struggling to cope and you need immediate help.**

### **Mental Health Matters - National Support**

**0191 516 3500 info@mhm.org.uk**

### **Depression UK**

<https://www.depressionuk.org/>

### **Hub of Hope**

<https://hubofhope.co.uk/>

### Addiction

### **Gambling Support**

GamCare - 0808 8020 133

### **Alcoholic's Anonymous**

National Helpline **0800 9177 650**

**help@aamail.org**

## Liverpool Support Services

### **Liverpool and Sefton**

Anyone aged 16 and over

For urgent mental health support, please call our **24/7 freephone helpline: 0800 145 6570**

### **Mind Clarity CIC**

142 Claughton Rd, Birkenhead, CH41 6EY

**07877253999 contact.mindclarity@gmail.com**

### **Liverpool CAMHS (age 0 to 25)**

FRESH Building, Alder Hey Children's Hospital, Liverpool, L12 2AP

**0151 293 3662**

**camhs.referrals@alderhey.nhs.uk**

### **Crown Hub**

Crown hub is a day service offering support to adults experiencing mental health issues. This is a short term re enablement service offering support for up to 6 – 10 weeks.

Crown Hub, Crown Street, Liverpool, L7 3LZ

**0151 233 3800**

**Crownhub@liverpool.gov.uk**

### **Our House Walton**

Counselling and mental health workshops

15 Heathcote Road, Walton, L4 6XB

**0151 521 7722 info@ourhouse-walton.co.uk**

### **iChoir**

Community choir whose aim is to get together and sing for mental wellbeing.

St Bride's Church, Corner of Catharine Street & Huskisson Street, Liverpool, L8 7LT

**ichoirliverpool2016@gmail.com**

# Mental Health and Wellbeing Support in North Liverpool



## **Talk Liverpool - North office**

7 New Hall, Fazakerley, Liverpool, L10 1LD  
**0151 228 2300 (Mon to Fri 8am to 6pm)**  
[talkliverpool@merseycare.nhs.uk](mailto:talkliverpool@merseycare.nhs.uk)

## **Liverpool Light**

The Liverpool Light service is a preventative out-of-hours mental health crisis service, open from 6pm – 1am, 7 days a week and based in the city centre at 181-185 London Road  
[liverpool.light@creativesupport.org.uk](mailto:liverpool.light@creativesupport.org.uk)

## **Compass Counselling Services:**

Counselling programme  
151 Dale Street, Liverpool, L2 2AH  
**0151 237 3993**  
[enquiries@compass-counselling.org.uk](mailto:enquiries@compass-counselling.org.uk)

## **Norris Green Community Alliance: 'Mindful Communities'**

Men's and women's support groups with regular meetings, services and activities to reduce isolation and improve mental health.  
Parthenon House Falklands Approach Norris Green L11 5BR  
**0151 479 3800**  
[norrisgreencommunity@btconnect.com](mailto:norrisgreencommunity@btconnect.com)

## **The Vibe Liverpool: 'We're Listening'**

A 1-1 listening service and group sessions with a focus on bereavement support.  
Vagabonds Tennis Club, 433 Queens Drive Liverpool, L13 0AG  
[thevibeliverpool@gmail.com](mailto:thevibeliverpool@gmail.com)

## **Liverpool Bereavement Service Service**

1st Floor, Granite Buildings, 6 Stanley Street, Liverpool, L1 6AF  
**0151 236 3932 (9am to 5pm)**  
[enquiries@liverpoolbereavement.co.uk](mailto:enquiries@liverpoolbereavement.co.uk)

## **Kindred Minds: 'Kindred Minds Arts on Prescription'**

Arts courses for people in need of mental health support, allowing them to meet new people and participate in a creative outlet  
Addressing bereavement and loneliness  
Lee Valley Millennium Centre, Childwall Valley Road, Liverpool, L25 2PR  
[enquiries@kindredmindsmerseyside.org](mailto:enquiries@kindredmindsmerseyside.org)

## **Priority Youth Project: 'Priority Youth Counselling Support Programme'**

A 1-1 counselling service for children and young people aged 8-19 years.  
Addressing mental health promotion in youth outside of educational setting  
**St Mary's Millennium Centre, Meadow Lane, West Derby, Liverpool, L12 5EA**  
**07523 650 956** [hello@priorityyouth.co.uk](mailto:hello@priorityyouth.co.uk)

## **The Comedy Trust: 'Laughter After Loss'**

Workshops, drop-ins and discussion groups to for adults following a bereavement, supporting their journey through the power of laughter.  
Royal Court Theatre, 1 Roe Street, L1 1HL  
**0151 702 5893** [info@thecomedytrust.com](mailto:info@thecomedytrust.com)

## **Vauxhall Community Law and Information Centre: 'Income, Benefits, Debt & Bereavement Advice Service'**

Supporting and increasing the incomes of people living in poverty through free legal advice and representation, bereavement advice such as welfare benefits and housing and debt advice to those who have suffered a loss.  
VNC Millennium Centre, Blenheim Street (Our entrance is on Silvester Street), Liverpool, L5 8UX  
**0151 360 7777**  
[advice@vauxhalllawcentre.org.uk](mailto:advice@vauxhalllawcentre.org.uk)

# National Domestic Abuse Services



## **If you are in immediate danger, call 999 and ask for the police.**

If prompted, press 55 to [Make Yourself Heard](#) and this will transfer your call to the police. Pressing 55 only works on mobiles and does not allow police to track your location.

## **Call 999 from a landline**

If the operator can only hear background noise and cannot decide whether an emergency service is needed, you will be connected to a police call handler. If you replace the handset, the landline may remain connected for 45 seconds in case you pick up again.

When 999 calls are made from landlines, information about your location should be automatically available to the call handlers to help provide a response.

## **If you are deaf or can't use a phone**

You can register with the [emergencySMS](#). Text REGISTER to 999. You will get a text which tells you what to do next. Do this when it is safe so you can text when you are in danger.

<https://www.emergencysms.net/>

## **Bright Sky app**

Bright Sky is a mobile app and website for anyone experiencing domestic abuse, or who is worried about someone else.

The app can be downloaded for free from the app stores. **Only download the app if it is safe for you to do so and if you are sure that your phone isn't being monitored.**

## **Safe Spaces**

Safe Spaces are available in Boots, Morrisons, Superdrug and Well pharmacies, TSB banks and independent pharmacies across the UK.

## **SignHealth**

Support for Deaf and hard of hearing  
020 39472601 or text 07970 350 366  
[da@signhealth.org.uk](mailto:da@signhealth.org.uk)

## **ManKind Initiative helpline for male victims of domestic abuse - 01823 334244**

## **Liverpool Support**

## **Merseyside Domestic Violence Services (MDVS)**

PO Box 200, Liverpool, L14 9WU  
**07802 722703** [info@mdvs.org](mailto:info@mdvs.org)

## **Local Solutions - Independent Domestic Violence Advisory Service (IDVA)**

**0151 709 0990** [info@localsolutions.org.uk](mailto:info@localsolutions.org.uk)

## **PSS: Domestic abuse support**

**0151 702 5500** [ruby@pss.org.uk](mailto:ruby@pss.org.uk)

## **Liverpool Domestic Abuse Service (LDAS)**

**07923 232327/0800 084 2744 / 0151 263 7474**

## **The Crossing Point - Domestic Abuse Service**

Free Confidential Domestic Abuse Service working with women, men, and young people.

**07731 878076** [info@thecrossingpoint.co.uk](mailto:info@thecrossingpoint.co.uk)

## **YMCA Liverpool - Domestic Abuse Rapid Accommodation Project**

YMCA Liverpool, Hope House, 15 Leeds Street, Liverpool, L3 6HU

**0151 600 3530/0151 734 1074**

## **4Wings - Support for women**

Church House, 1 Hanover Street, Liverpool, L1 3DN  
**0151 558 1442** [info@4wings.co.uk](mailto:info@4wings.co.uk)

# Disability Support in North Liverpool



## Citywide Support

### **The Brain Charity**

Norton Street, Liverpool, L3 8LR  
0151 298 2999

<https://www.thebraincharity.org.uk/>

### **Mencap**

Mencap Cottage House 6-8 Mariners Road L23 6SX  
<https://yournetwork.mencap.org.uk/group/512>  
**0151 707 8582**

### **Strawberry Field**

Beaconsfield Road, Liverpool L25 6EJ  
**0151 252 6130**

### **Community Integrated Care**

Information@c-i-c.co.uk  
**Phone: 0800 2218 522**

## Activities and support

### **Daisy Inclusive UK**

2 Barnes Street, Everton L6 5LB  
**0151 261 0309 info@daisyuk.com**

### **Greenbank Sports Academy**

Greenbank Lane, Liverpool L17 1AG England  
**0151 280 7757**

### **DaDa - Disability and Deaf Arts**

The Bluecoat, School Lane, Liverpool, L1 3BX  
**07436 536 200 0151 707 1733**

### **The Lime Hub**

The Lime, Upper Baker Street, Liverpool, L6 1NB  
**0151 233 5085 / 0151 263 8338**

### **The New Derry Club P.A.C**

The New Derry Social Club, Mere Lane, L5 0QW  
**0151 263 1758 pacdisco@hotmail.com**

### **Bradbury Fields - Information and Support Services**

Bradbury Centre, Youens Way, Liverpool, L14 2EP  
**0151 221 0888 info@bradburyfields.org.uk**

### **Acorn Adventure Farm**

Depot Road, Kirkby, Merseyside, L33 3AR  
**0151 548 2415 admin@acornfarm.co.uk**

### **Physical and Sensory Impairment Partnership Board**

The Old School House, St Johns Road, L36 0UX  
**07701 366227**  
**Jen.Casey@healthwatchknowsley.co.uk**

### **NSC CARE ACTIVITY HUB**

The Care Activity Hub, Back Gilmooss Lane, Croxteth, Liverpool, L11 0BD  
**07540932743/01515466249**  
**Info@thecareactivityhub.co.uk**

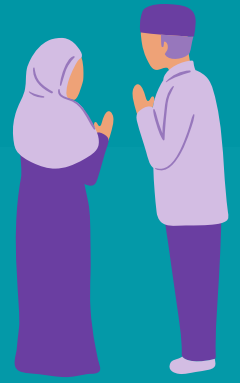
### **L'Arche Liverpool**

L'Arche Liverpool, The Ark Workshops, Lockerby Road, Liverpool, L7 0HG  
**0151 260 0422**

### **RAWD**

Unity Theatre, 1 Hope Place, Liverpool, L1 9BG  
**07588 754 325 outreach@rawdproject.co.uk**

# Migrant and Multi-Cultural Support in North Liverpool



## **Pal Multicultural Centre**

68A Mulgrave St, Liverpool L8 2TF  
**0151 708 9669**

## **The Kuumba Imani Mellinum Centre**

4 Princes R, Liverpool, L8 1TH  
**0151 708 5278 0741 477 51 51**  
**Info@Moulana.co.uk**

## **Florrie**

377 Mill St, Liverpool, L8 4RF  
**0151 728 2323 info@theflorrie.org**

## **Liverpool Arabic Centre: 'Your Safe Space'**

A culturally sensitive mental health support service, which combines Western and Arab/Muslim traditional therapies to provide support for people experiencing poor emotional and mental well-being due to financial hardship. Tiber enterprise facilities, Tiber street site, Lodge Lane, Liverpool, L8 0TP  
**0151 727 2855**

## **Mary Seacole House**

A mental health charity and resource service set up to offer support and advice in emotional and practical matters, primarily Black, Asian, Minority, Ethnic and Refugee communities. Mary Seacole House, 91 Upper Parliament Street, Liverpool, L8 7LB  
**info@maryseacolehouse.com**

## **Everton in the Community: Welcome Through Football Refugee And Asylum Seeker Football Project**

The People's Hub Cruyff Court, 46 Spellow Lane, Liverpool, L4 4DF  
**jonathan.garside@evertonfc.com**

## **Merseyside Refugee Support Network (MRSN)**

1st Floor, St Anne's Centre, 7 Overbury Street, Liverpool, L7 3HJ  
**0151 709 7557 info@mrsnliverpool.org.uk**

## **Family Refugee Support Project (FRSP)**

Provides practical help to refugees "moving-on" from the asylum system and support to onward social and economic integration into life in Liverpool and beyond. Toxteth Town Hall, 15 High Park Street, L8 8DX  
**0151 728 9340 info@frsp.org.uk**

## **BME Youth**

BME Youth is a national youth organisation of children and young people from Black, Asian and Minority Ethnic (BAME) communities in the UK.  
**<https://www.bmeyouth.org.uk/about/>**

## **Muslim Women's Network UK**

MWNUK is the only national Muslim women's organisation in Britain. They offer a helpline, counselling services, training and workshops.  
**<https://www.mwnuk.co.uk/>**

## **Migrants Rights Network**

The Migrants' Rights Network is a UK charity that stands in solidarity with all migrants in their fights for rights and justice.  
**<https://migrantsrights.org.uk/>**

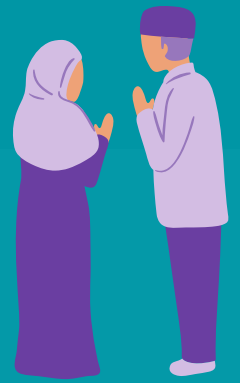
## **The Muslim Community Helpline**

The Muslim Community Helpline is a confidential, non-judgemental listening and emotional support service.  
**0208 908 6715 / 0208 904 8193**  
**ess4m@btinternet.com**

## **Boloh Helpline**

Offers advice, signposting, emotional support and free therapy to adult asylum seekers UK Wide.  
**To find out more contact 0800 151 2605**

# Migrant and Multi-Cultural Support in North Liverpool



## **Liverpool Muslim Society and Al Rahma Mosque**

29-31 Hatherley St, Liverpool L8 2TJ  
0151 709 2560  
[info@liverpoolmuslimsociety.org.uk](mailto:info@liverpoolmuslimsociety.org.uk)

## **Christ Church Norris Green - Triple C**

The Church of the Good Shepherd, Lower House Lane L11 2SF  
**07871 914364 0151 226 2992**  
[info@triplecliverpool.org](mailto:info@triplecliverpool.org)

## **Pagoda Chinese Community Centre**

Pagoda Arts Henry Street, Liverpool, L1 5BU  
**Email: [info@pagodaarts.org.uk](mailto:info@pagodaarts.org.uk)**  
**Tel: 07542339019**

## **4Wings - Support for women**

Church House, 1 Hanover Street, L1 3DN  
**0151 558 1442 [info@4wings.co.uk](mailto:info@4wings.co.uk)**

## **Amadudu Women's Refuge**

**0151 734 0083 [info@amadudu.org](mailto:info@amadudu.org)**

## **Muslim Community Helpline**

0208 904 8193 or 0208 908 6715  
[ess4m@btinternet.com](mailto:ess4m@btinternet.com)

## **Savera UK**

151 Dale Street, Liverpool, L2 2AH  
**0800 107 0726 [info@saverauk.co.uk](mailto:info@saverauk.co.uk)**

## **Liverpool Malayalee Association**

**07736 352874 [limaliverpool@gmail.com](mailto:limaliverpool@gmail.com)**

## **Kadampa Meditation Centre (KMC) Liverpool**

**0151 726 8900**  
[info@meditationinliverpool.org.uk](mailto:info@meditationinliverpool.org.uk)

## **Osun Arts Foundation: African arts and culture**

Osun Foundation, The Old Saint Lawrence School Building, Westminster Road, Liverpool, L4 3TQ  
**0151 922 2911 [sunartsfoundation@gmail.com](mailto:sunartsfoundation@gmail.com)**

## **Liverpool Irish Centre - Sláinte Le Chéile Health Together**

Liverpool Irish Centre, 6 Boundary Lane, Liverpool, L6 5JG  
**0151 263 1808 [info@liverpoolirishcentre.org](mailto:info@liverpoolirishcentre.org)**

## **Merseyside Jewish Community Care (MJCC) - Key services**

Shifrin House, 433 Smithdown Road, Liverpool, L15 3JL  
**0151 733 2292 [info@mjccshifrin.co.uk](mailto:info@mjccshifrin.co.uk)**

## **Al-Ghazali Multicultural Centre**

Al-Ghazali Multicultural Centre, 35 Earle Road, Liverpool, L7 6HD  
**0151 734 3843 [info@alghazalicentre.co.uk](mailto:info@alghazalicentre.co.uk)**

## **Liverpool Arabic Centre (LAC)**

Tiber Enterprise Facilities, Tiber Street, Lodge Lane, Liverpool, L8 0TP  
**0151 727 2855**  
[info@liverpoolarabiccentre.org.uk](mailto:info@liverpoolarabiccentre.org.uk)

## **Merseyside Polonia**

Kirkdale Neighbourhood Community Centre 238a Stanley Road Liverpool L5 7QP  
**0151 237 2674 [info@merseysidepolonia.com](mailto:info@merseysidepolonia.com)**

## **Muslim Youth Helpline (MYH)**

**0808 808 2008 [help@myh.org.uk](mailto:help@myh.org.uk)**

## **Mary Seacole House**

91 Upper Parliament Street, Liverpool, L8 7LB  
**0151 707 0319 [info@maryseacolehouse.com](mailto:info@maryseacolehouse.com)**



# Women's and Men's Groups in North Liverpool



## Women's Groups

### **Women's Health Information and Support Centre (WHISC):**

Our Listening Ear service is available for women, telephone 0151 707 1826 to make an appointment or drop in to WHISC Centre. Open Monday, Tuesday and Thursday 10 am to 4pm  
Daily activities available

120 Bold Street, Liverpool, L1 4JA

**0152 707 1826** [women@whisc.org.uk](mailto:women@whisc.org.uk)

### **Granby Somali Women's Group: 'GSWG Befriend Me'**

A social network where elderly Muslim and minority ethnic women will come together, exchange ideas, have interesting discussions and participate in a number of activities, which will alleviate their loneliness.

12 Beaconsfield Street, Liverpool, L8 2UU

**contact@granbysomaliwomensgroup.org**

### **The Women's Organisation: Enterprise Hub**

54 St James Street, Liverpool, L1 0AB

**0151 706 8113** [enterprisehub@thewo.org.uk](mailto:enterprisehub@thewo.org.uk)

### **National Association of Women's Clubs (NAWC) - Liverpool**

**01708 730805** [nawc@btconnect.com](mailto:nawc@btconnect.com)

### **Paperwork Theatre - Women's Drama Group**

Luna, Northern Lights, 5 Mann Street, L8 5AF

**info@paperworktheatre.co.uk**

### **Minerva Women's Group**

Women's clubs across Liverpool offering activities, trips, and friendship in a friendly atmosphere.

St Marys Millennium Centre, Meadow Lane, L12 5EA

**0151 228 1998**

## Men's Groups

### **JourneyMEN**

Offer practical activities designed to tap that potential, address the causes of mental ill-health and aid recovery.

<http://journeymencic.com>

56 Chester Street, Birkenhead, CH41 5EA

**0151 792 9159** [enquiries@journeymencic.com](mailto:enquiries@journeymencic.com)

### **Peloton Liverpool Ltd: 'Joy Ride'**

A cycling club to support men in recovery, whilst providing an opportunity to socialise, exercise and build skills. L13 9AF

**danny@peloton.coop**

### **Ellergreen Community Centre - JAM**

'Just Average Men' Men's Group open to men of all ages delivering activities as a group.

Monday 10 am to 12 pm

Ellergreen Road, Liverpool, L11 2RY

**0151 233 3337** [ellergreen@altvalley.co.uk](mailto:ellergreen@altvalley.co.uk)

### **Sean's Place**

Mental Health Support for Men in Sefton and Liverpool

**211 Linacre Lane, Bootle, Liverpool, L20 6AD**

**0151 922 5444**

### **Reach Mens Centre**

The Reach Mens Centre, 6-7 The Palatine, Strand Shopping Centre, Bootle, L20 4SN

**07504565764** or **0151 245 6925**

### **Andys Man Club Liverpool**

**info@andysmanclub.co.uk**

### **James' Place Liverpool**

Offer free, life-saving treatment to suicidal men

**0151 303 5757** [liverpool@jamesplace.org.uk](mailto:liverpool@jamesplace.org.uk)

# LGBTQ+ Support in North Liverpool



## LGBTQ+

### **Trans Support Service (TSS)**

The Beat Hanover Street/David Lewis Street  
Liverpool L1 4AF  
**0151 317 8581** [Tss.merseyscare@nhs.net](mailto:Tss.merseyscare@nhs.net)

### **Spirit Level Transgender Support Group**

<https://spiritlevel.org.uk/>  
[spirit.level@yahoo.com](mailto:spirit.level@yahoo.com)

### **Sahir**

Sahir House, 4th Floor, 151 Dale Street L2 2AH  
**0151 673 1972** [info@sahir.uk.com](mailto:info@sahir.uk.com)

### **THE Action Youth (Trans Health Education) (YPAS)**

36 Bolton Street, L3 5LX [www.ypas.org.uk](http://www.ypas.org.uk)  
**0151 702 6087** [gyro@ypas.org.uk](mailto:gyro@ypas.org.uk)

### **Citizens Advice Liverpool - LGBTQ+ Hate Crime Support Service**

Practical & emotional support for people who have been affected by LGBTQ+ hate incidents, and their families, across Merseyside.

**0151 522 1400 ext 5006**  
[LGBTHateCrime@caliverpool.org.uk](mailto:LGBTHateCrime@caliverpool.org.uk)

### **Switchboard LGBTQ+ Helpline**

**0800 0119 100** [hello@switchboard.lgbt](mailto:hello@switchboard.lgbt)

### **Merseyside non-scene LGBT Social Group**

<https://www.meetup.com/MERSEYSIDE-LGBT-SOCIAL-GROUP/>  
[stev\\_arts@yahoo.co.uk](mailto:stev_arts@yahoo.co.uk)

### **Merseyside LGBT Creative Writing Group and Book Groups (18+)**

<https://www.meetup.com/LGBT-Creative-Writing-And-Book-Group-MeetUp-Merseyside/>

### **Galop**

Supports all LGBT+ people who've experienced hate crime, domestic abuse or sexual violence.  
**0800 9995428** [help@galop.org.uk](mailto:help@galop.org.uk)

### **Sahir House - HIV Support, Information and Training Centre**

Sahir House, 4th Floor, 151 Dale Street, L2 2AH  
**0151 673 1972** [info@sahir.uk.com](mailto:info@sahir.uk.com)

### **LIV.FAST Network**

Provides peer support and advice for those who identify somewhere within the FTM (Female-to-Male) spectrum.

The Beat, Hanover Street/David Lewis Street, Liverpool, L1 4AF  
[liverpool.ftm@gmail.com](mailto:liverpool.ftm@gmail.com)

## National Resources

**Stonewall** <https://www.stonewall.org.uk/>

**LGBT Foundation** <https://lgbt.foundation/>  
**0345 3 30 30 30** [helpline@lgbt.foundation](mailto:helpline@lgbt.foundation)

**Mermaids** <https://mermaidsuk.org.uk/>

**Mind** - Mindline Trans+ - helpline for LGBT / non-binary people - **0300 330 5468**

**Mindout** - Lesbian, Gay, Bisexual, Trans & Queer Mental Health Service Online Chat  
**01273 234839** [info@mindout.org.uk](mailto:info@mindout.org.uk)

### **Families and Friends of Lesbians and Gays (FFLAG)**

**0300 688 0368** [info@fflag.org.uk](mailto:info@fflag.org.uk)



## Sexual Violence Support

### **Rape and Sexual Abuse Centre (RASA)**

RASA Merseyside provides support to anyone in Merseyside impacted by sexual violence.

**0151 666 1392** [helpline@rasamerseyside.org](mailto:helpline@rasamerseyside.org)

### **Rape Crisis**

A service for anyone aged 16+ in England and Wales who has been affected by rape, child sexual abuse, sexual assault, sexual harassment or any other form of sexual violence – at any point in their life.

**0808 500 2222**

### **SAFE Place Merseyside: Sexual Assault Referral Centre (SARC)**

24 hour telephone support service

**0151 295 3550**

### **Silent Solution**

Helps people who are unable to speak, but who genuinely need police assistance. After calling 999, dial 55 to be put through to your local police station. If you are not able to speak, listen carefully to the questions and instructions from the call handler so they can assess your call and arrange help if needed.

### **Rape and Sexual Abuse Support RASASC (Cheshire & Merseyside)**

The Rape and Sexual Abuse Support Centre (Cheshire & Merseyside) is a registered charity that aims to provide crucial specialist support, independent advocacy, counselling, help and information, for those affected by rape, sexual assault and/or abuse – a free of charge service delivered in a safe and non-threatening environment.

**PO Box 35, Warrington. WA1 1DW**

**01928 477980/0330 363 0063**

### **Rape Crisis**

If something sexual happened to you without your consent – or you're not sure – you can talk to a member of the team. No matter when it happened.

**0808 500 2222** open 24 hours a day

<https://rapecrisis.org.uk/get-help/>

### **Galop**

A UK LGBT+ anti-abuse charity, provides a dedicated sexual violence helpline for LGBT+ people who have experienced sexual assault, violence or abuse, however or whenever it happened.

**Victims can contact the Helpline by phone 0800 999 5428 or via email [help@galop.org.uk](mailto:help@galop.org.uk).**

### **The 24/7 Rape and Sexual Abuse Support Line**

24/7 offers Free, specialist and confidential support delivered by Rape Crisis England &

**0808 500 2222**

**To chat online or find out more visit**

<https://247sexualabusesupport.org.uk>

### **National Online Helpline for Male Survivors**

Operated by Survivors UK. Supports men and boys (trans or cisgender) and non-binary people who have ever experienced unwanted sexual activity. Live chat, SMS and email support.

<https://www.survivorsuk.org/>

### **The Survivors Trust**

The Survivors Trust provides confidential information, advice and support for women, men and young people, their parents/carers or partners via a helpline or email.

**08088 010818**

[info@thesurvivorstrust.org](mailto:info@thesurvivorstrust.org)

More information can be found at

[www.thesurvivorstrust.org](http://www.thesurvivorstrust.org)

# Riverside

## Additional Support



### Hate Crime

General victims of hate crime can call their Local Neighbourhood Police Team on telephone number **101** or Liverpool Direct on **0151 233 3001** to report

### Stop Hate UK

Stop Hate UK is available 24 hours a day. The helpline is confidential and independent.

You can report a hate crime by:

**0800 138 1625 Text: 07717 989 025**

**Text relay: 18001 0113 293 5100**

**Webchat at <https://www.stophateuk.org/talk-to-us>**

### Anthony Walker

Racial or religious hate crime - this support service is delivered by the Anthony Walker Foundation (AWF). AWF delivers specialist counselling and support for victims.

LCVS Building 3rd Floor, 151 Dale Street, L2 2AH

**0151 237 3974**

**[info@anthonywalkerfoundation.com](mailto:info@anthonywalkerfoundation.com)**

### Daisy Inclusive UK

Disability hate crime - provided by charity Daisy Inclusive UK. Daisy UK have a dedicated hate crime officer who supports victims from the point of contact through to support and guidance through the judicial system, if required.

**0151 261 0309**

**[disabilityhatecrime@daisyuk.com](mailto:disabilityhatecrime@daisyuk.com)**

### Citizens Advice Liverpool

LGBTQ+ hate crime - this support service is delivered by Citizens Advice Liverpool. They can help you to make a report to the police if you wish, understand your rights, liaise with organisations and help you to access specialist support services such as counselling.

**0800 144 8848**

### Victim Support: (24/7 support)

Victim Support operates a 24/7 Supportline and live chat service, every day of the year, offering specialist emotional and practical support to anyone who has been a victim or a witness. You don't have to report a crime to get help from Victim Support.

**0808 16 89 111**

Live chat available by visiting

**<https://www.victimsupport.org.uk/help-and-support/get-help/support-near-you/live-chat>**

### Hate Crime Campaign

The Hate Crime Campaign provides information and services to those who have been a victim of Hate Crime.

**<https://hatecrime.campaign.gov.uk/>**

### Hate Crime Victim Support – Remedi UK

The Cheshire Hate Crime Victim Service are a support service for all victims and witnesses of hate crime and hate incidents. They can offer

- Confidential emotional and practical support
- Support at court
- Advocacy
- Access to a range of support agencies
- Support with your Victim Personal Statement

**0800 640 6466 (Mon-Fri, 9am-5pm)**

**[hatecrimevictimservice@remediuk.org](mailto:hatecrimevictimservice@remediuk.org)**

**For additional support services please download our National Support Directory**