

QNAP

The first managed PoE switch
supports QTS



Guardian

QGD-1600P



Power Sourcing Equipment Product evolution



1ST Generation
managed PoE
switch



2ST Generation
L2/ L3 Managed
PoE Switch



3rd Generation
Guardian Smart
Edge PoE Switch



- Equipped with QTS
- Virtual machine
- Hybrid cloud storage
- IEEE 802.3bt Ready

Guardian
QGD-1



Guardian Smart Edge PoE Switch- PoE Advantages

Supports the new generation of IEEE 802.3bt power supply standard

Camera device remote restart

PoE scheduling

Power supply priority configuration

High total power supply rate design 370 watts PoE power supply budget

Remote intelligent monitoring and management interface

Support 4 Port 60 watt (PoE++)
12 Port 30 watt (PoE+)



Guardian
QGD-1



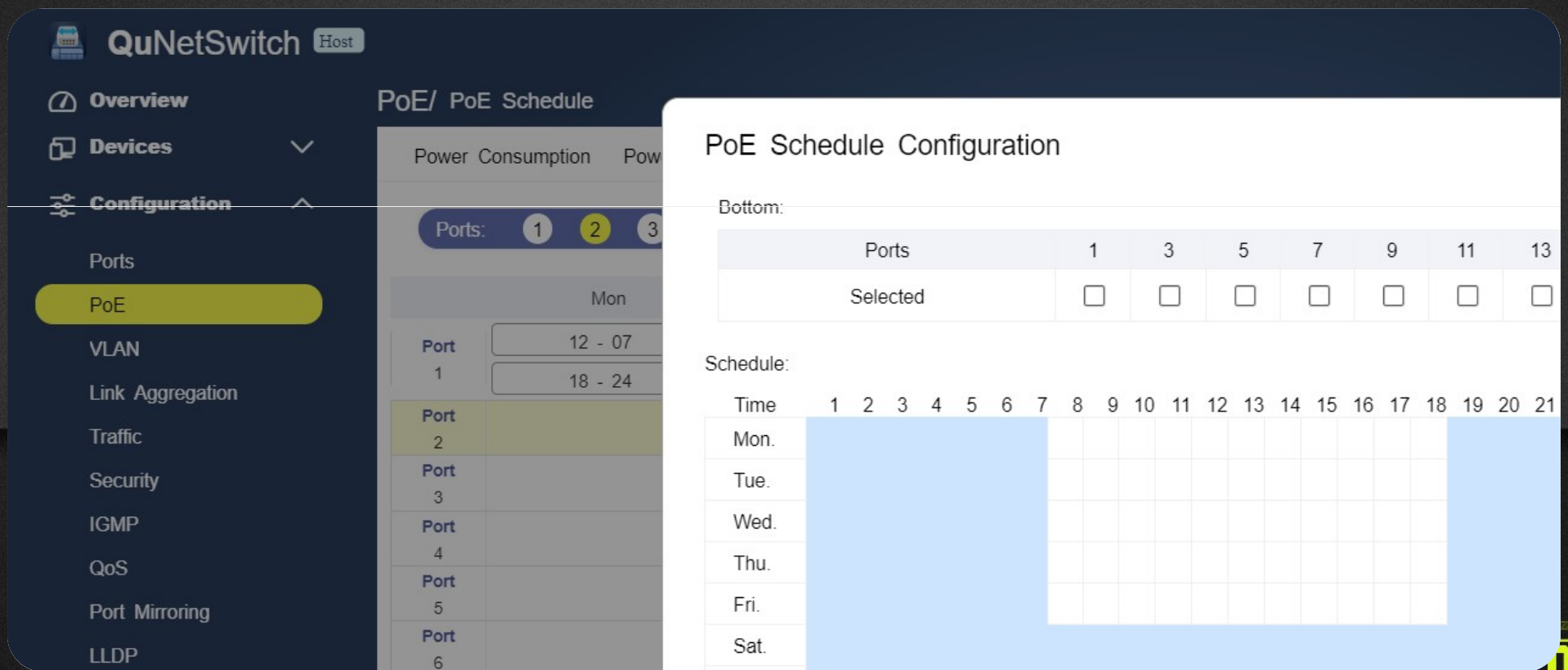
Support PoE device remote restart

When the administrator finds that the PoE device is not working properly, for example, PoE camera is down. Administrators can remotely reboot the device through the Guardian managed interface, saving time and effort.



Support PoE power scheduling management

With PoE scheduling function, it can set the power supply only on the specified working day and time to save energy and save electricity, and save extra power cost for you!



The screenshot displays the QuNetSwitch management interface. On the left is a navigation menu with options: Overview, Devices, Configuration, Ports, PoE (highlighted), VLAN, Link Aggregation, Traffic, Security, IGMP, QoS, Port Mirroring, and LLDP. The main area shows the 'PoE/ PoE Schedule' configuration page. A 'Bottom:' section contains a table for selecting ports:

Ports	1	3	5	7	9	11	13
Selected	<input type="checkbox"/>	<input type="checkbox"/>	<input type="checkbox"/>	<input type="checkbox"/>	<input type="checkbox"/>	<input type="checkbox"/>	<input type="checkbox"/>

Below this is a 'Schedule:' section with a grid for setting power supply times:

Time	1	2	3	4	5	6	7	8	9	10	11	12	13	14	15	16	17	18	19	20	21	
Mon.	[Shaded]																					
Tue.																						
Wed.																						
Thu.																						
Fri.																						
Sat.	[Shaded]																					



Support remote login management interface

Guardian supports the PoE remote management interface, allowing you to remotely log in and manage your PoE devices wherever you are, allowing you to monitor your device's power usage immediately.



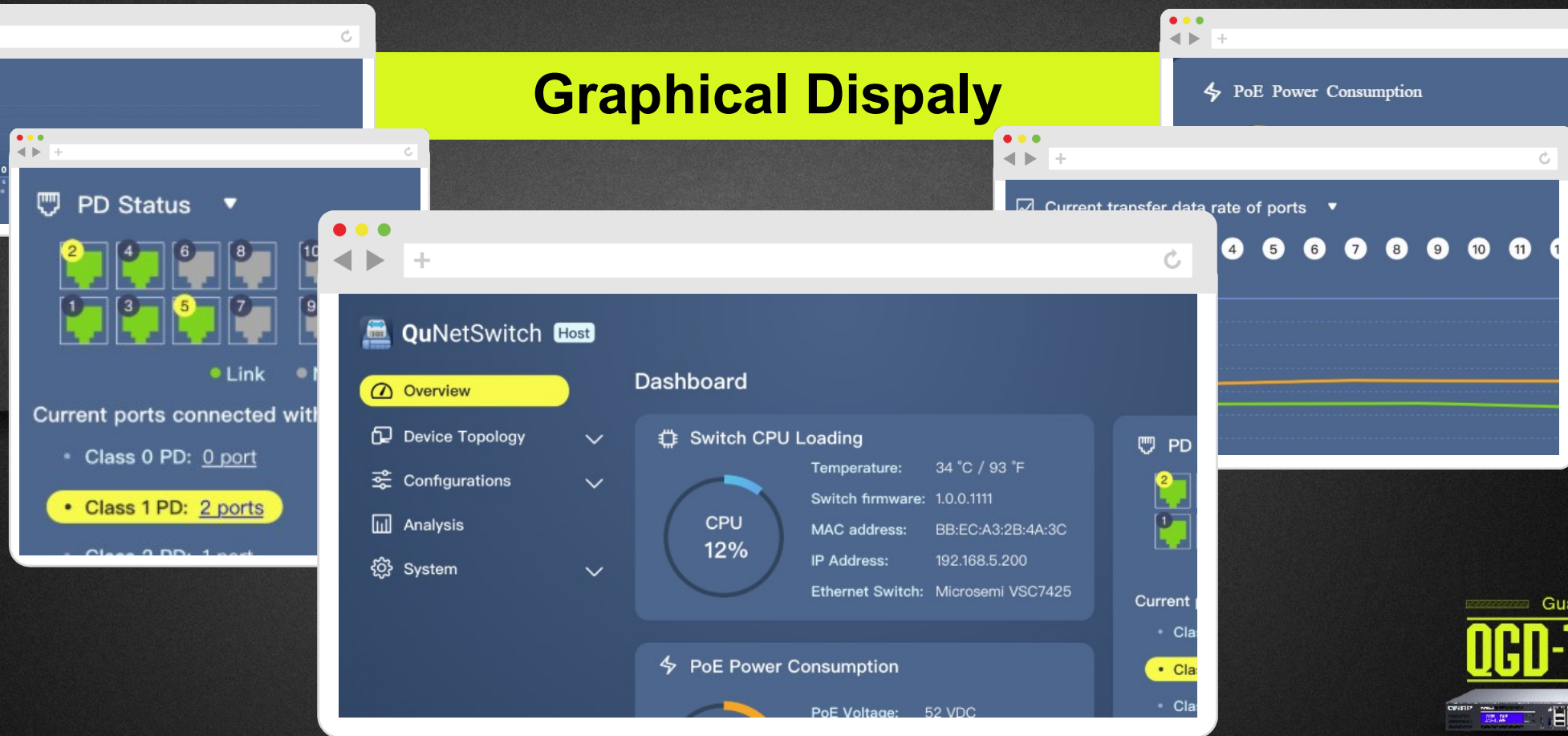
Guardian
QGD-1



Rich graphical data display

Guardian provides rich graphical PoE data information, including timely power consumption status, available wattage information, and various PoE operation status, so that enterprises can effectively grasp the power usage status of the equipment.

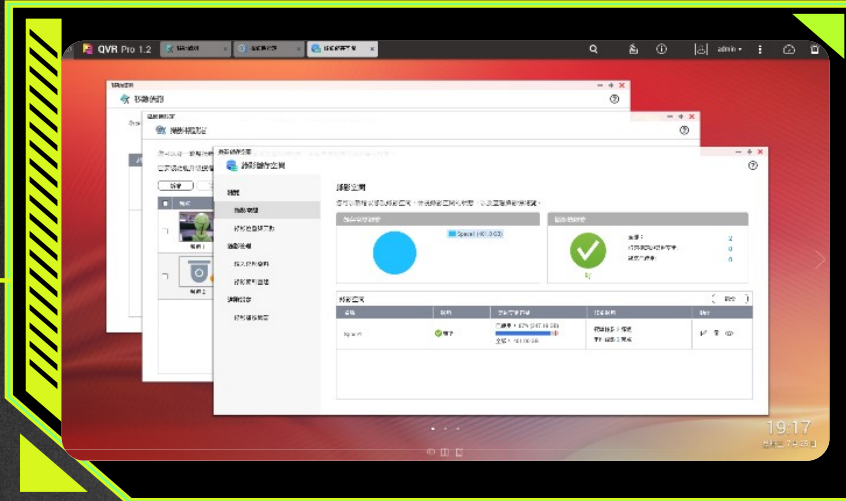
Graphical Display



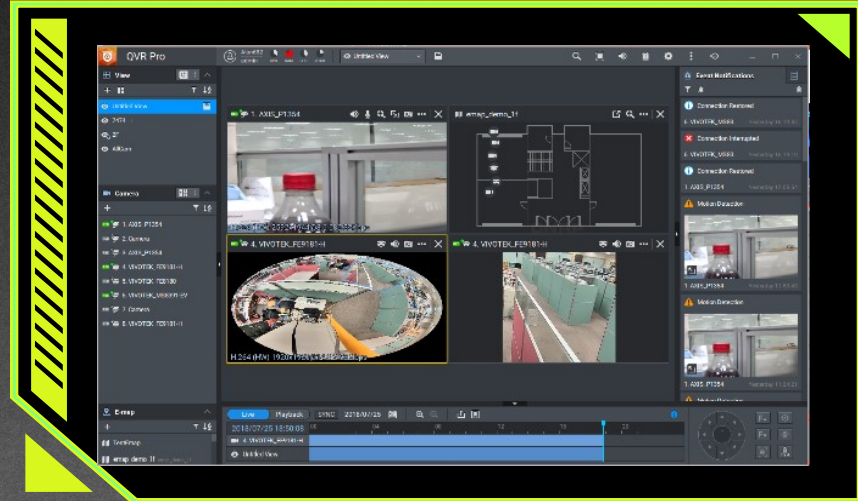
Guardian X QVR Pro complete solution



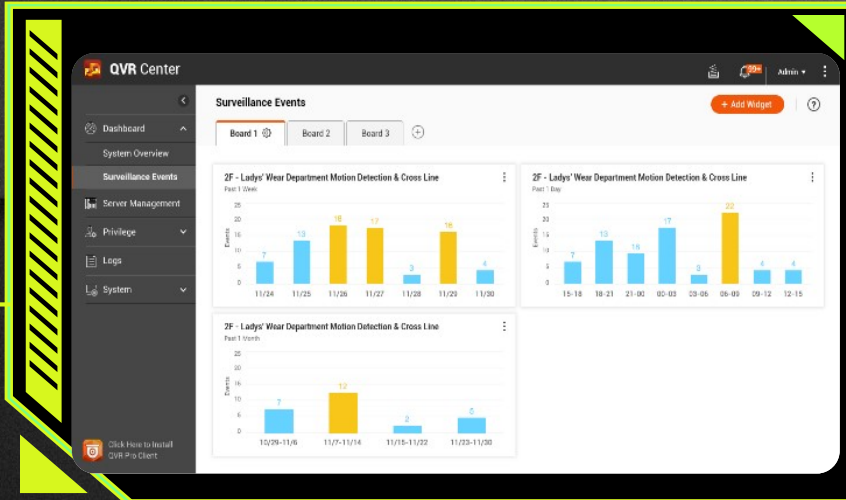
QVR Pro



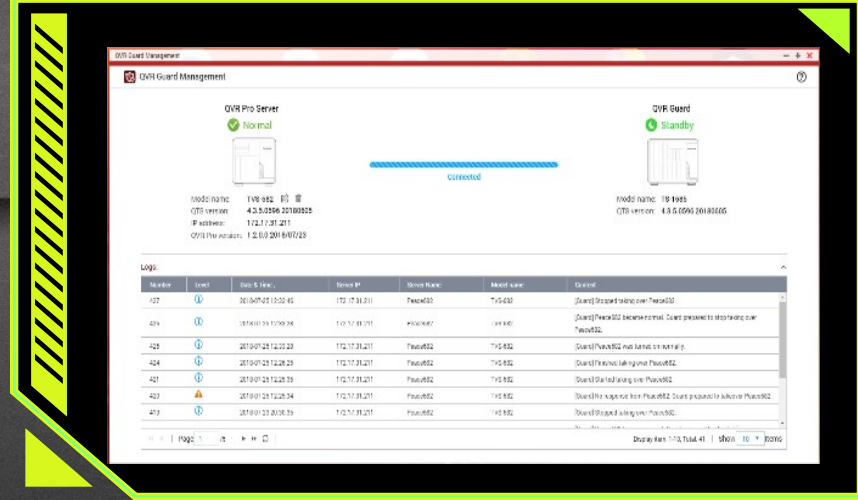
QVR Pro



QVR Center



QVR Guard



Guardian X
QGD-1



Run virtual machine and container, one machine and multiple systems

Virtualization Station and Container lead a full range of hybrid virtual application solutions. Regardless of your needs, you can rely on QNAP's complete virtualization application support. Choosing the right deployment strategy for your virtualization needs can be easy!



Virtualization Station



Container Station



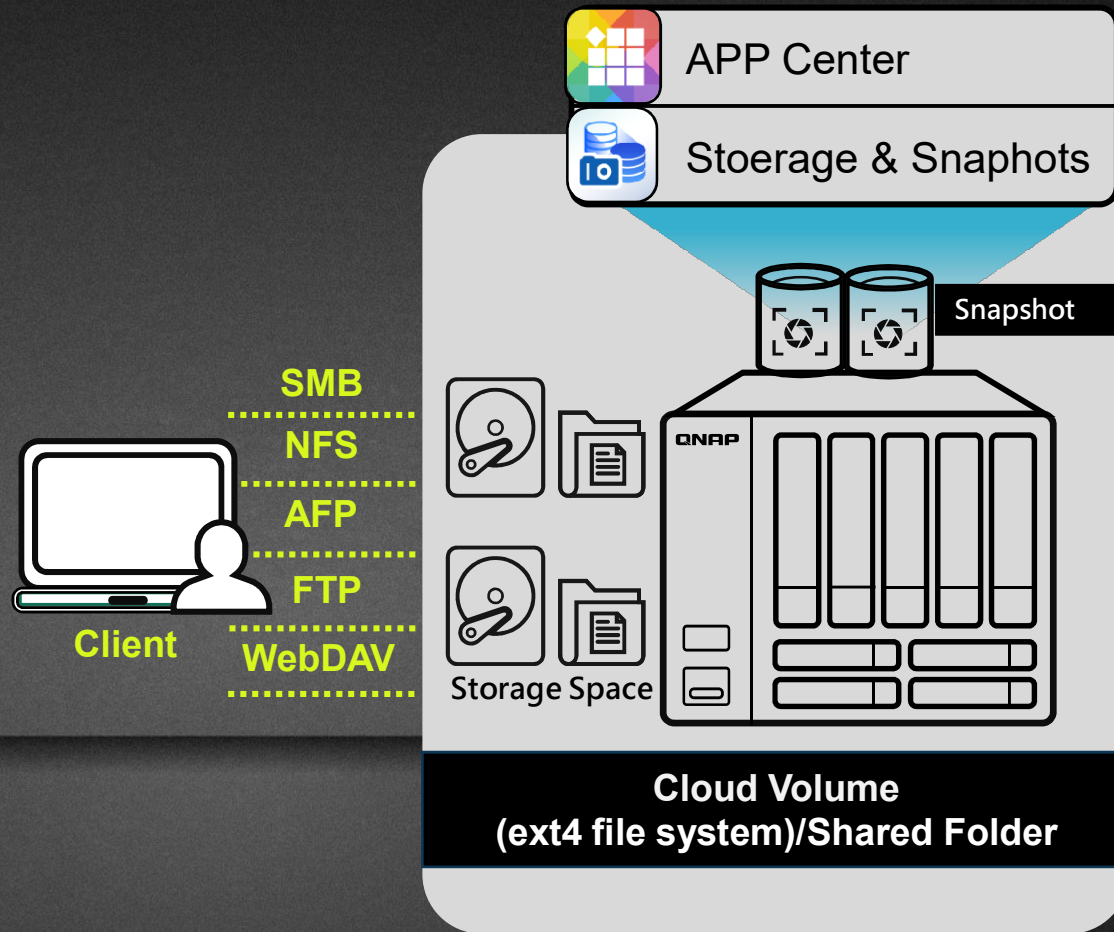
Guaranteed
QNAP-1600P

Local data cloud backup solution

QNAP's VJBOD Cloud feature is a block-based Gateway block cloud gateway.

The VJBOD Cloud Gateway allows users to easily connect to the cloud's storage and convert it to disk on the local side.

Enterprise IT staff or general users can use the more familiar file access protocol (NFS, SMB, AFP, FTP, WebDAV) for access.



Cloud ob
storage s



Guar

QGD-1



Synchronization and co-management of global multi-site office files

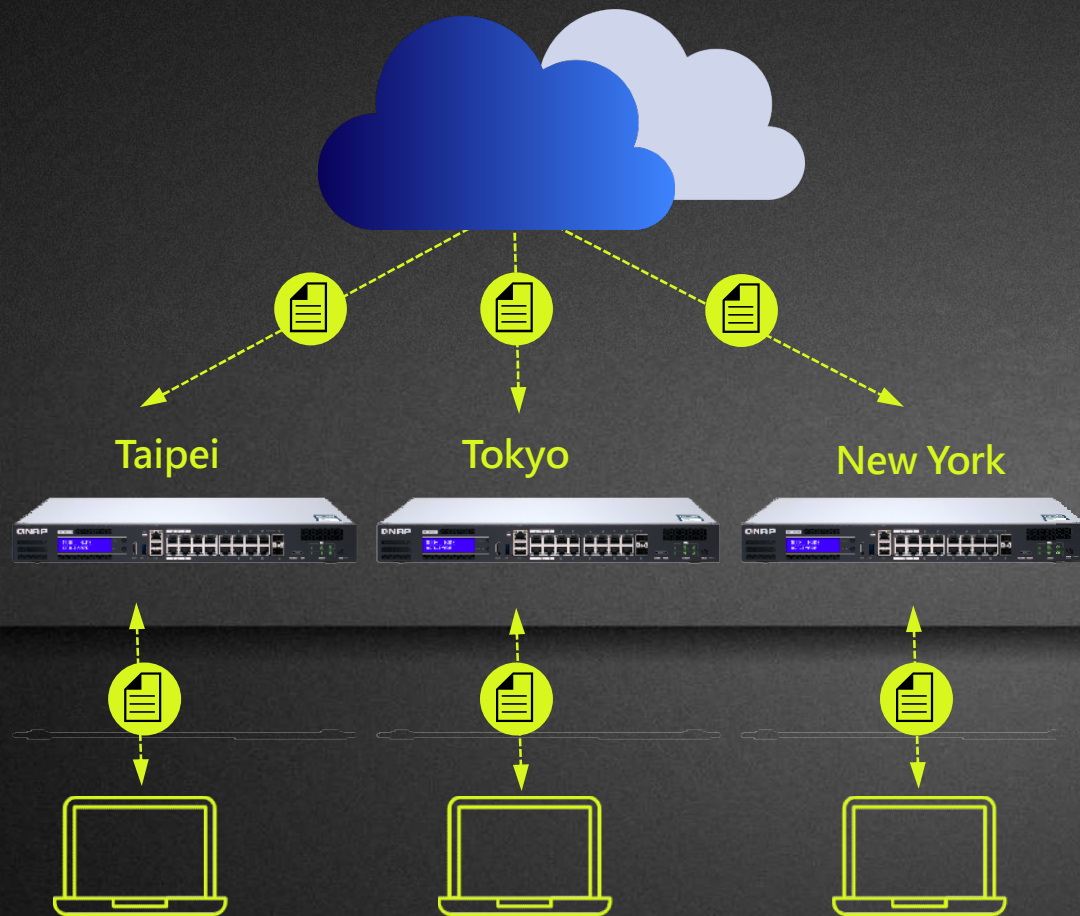
With a cloud space, it can be accessed all over the world and achieve file synchronization. Collect data from global locations and freely expand space.

Configure Guardian as a file-based cloud gateway at each point office.

Easy and efficient access to the cloud by office users

1. Support access protocol
2. local cache allows access to cloud files as if it were a local experience

Eliminate the traditional VPN time-consuming and laborious access method



QNAP QvPC Innovation Technology

With QNAP's exclusive QvPC technology (QNAP virtualized Personal Computer technology), you can connect your Guardian to a keyboard, mouse, and connect to the monitor via HDMI to use the Guardian switch as a PC.



Connect the mouse keyboard,
Guardian Switch can also be
used as a **PC**



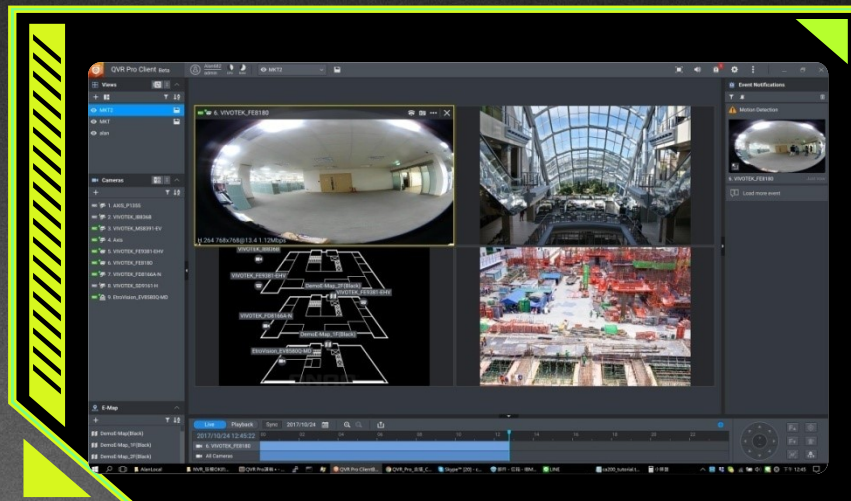
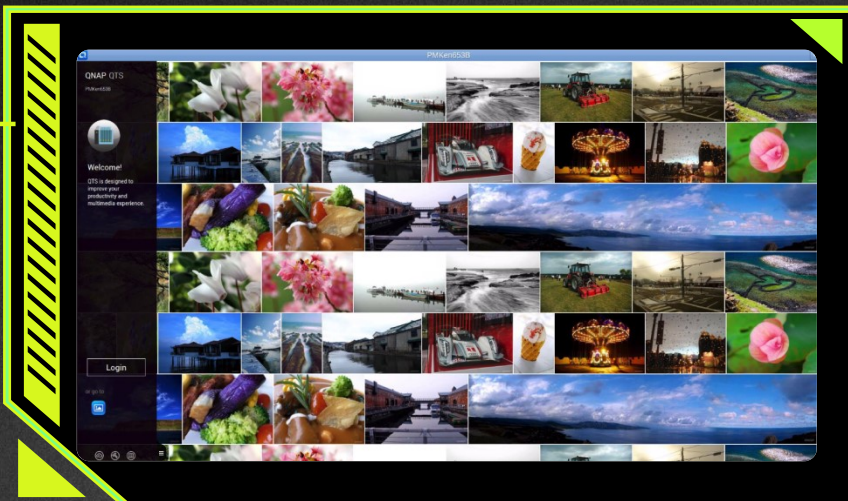
Guardian
QGD-1



HD Station rich application

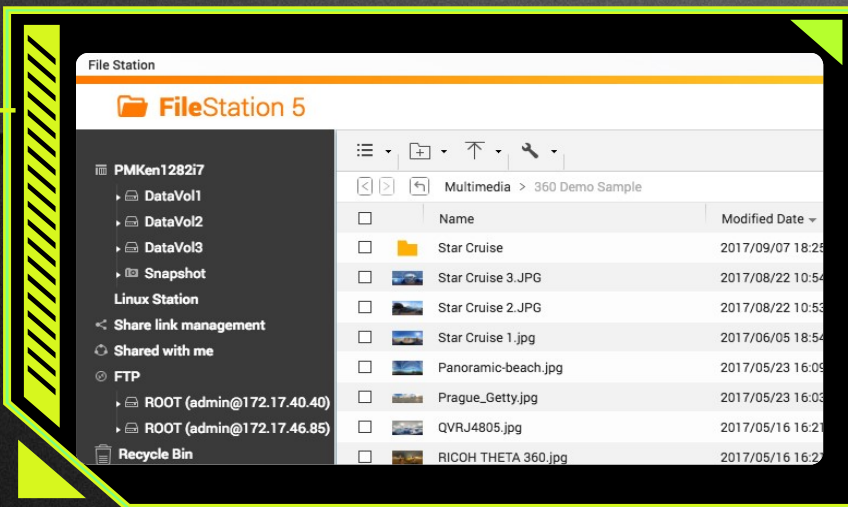
A variety of web apps let you get started quickly.

S



QVR Pro
QVR Pro C
can also v
monitor
screens di

ation

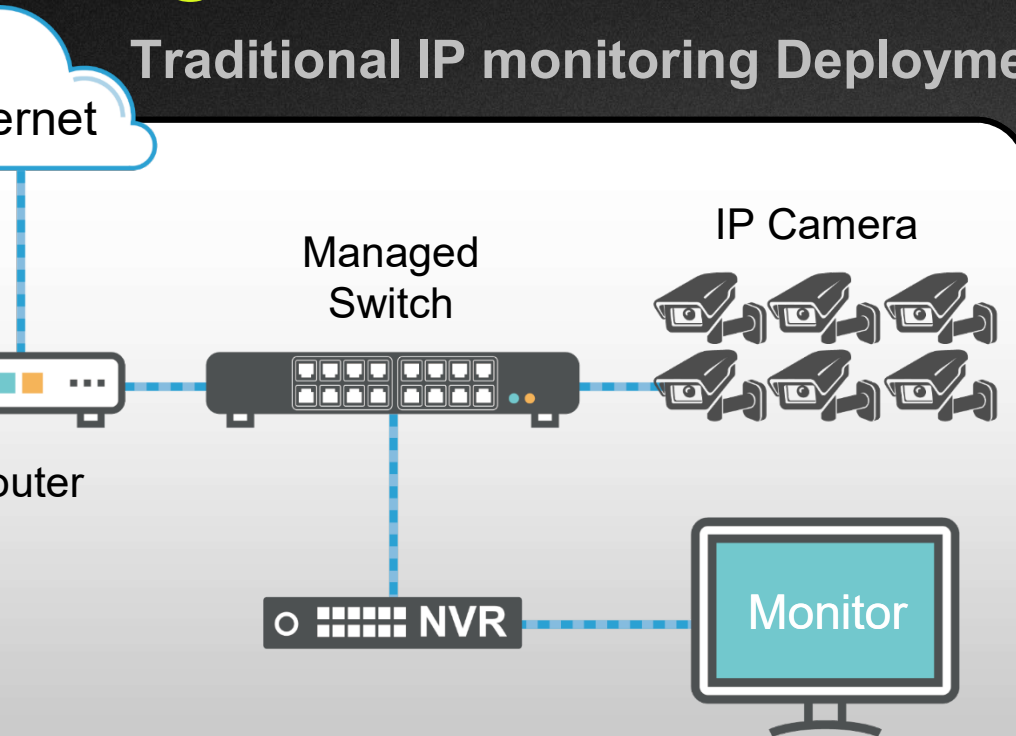


QuNetS



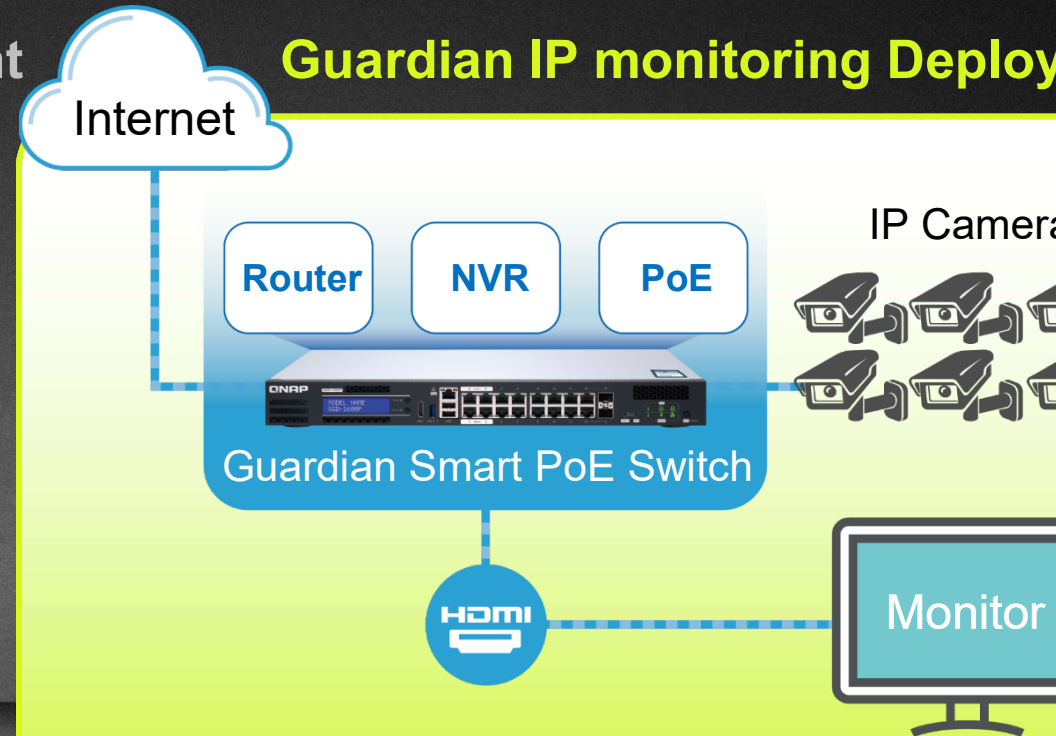
Guardian brings a new IP surveillance integrated solution

Traditional IP monitoring Deployment



- Need to buy a variety of equipment, cost increases
- Complex wiring, difficult to build and maintain
- Low scalability, difficult to cope with future changes

Guardian IP monitoring Deployment



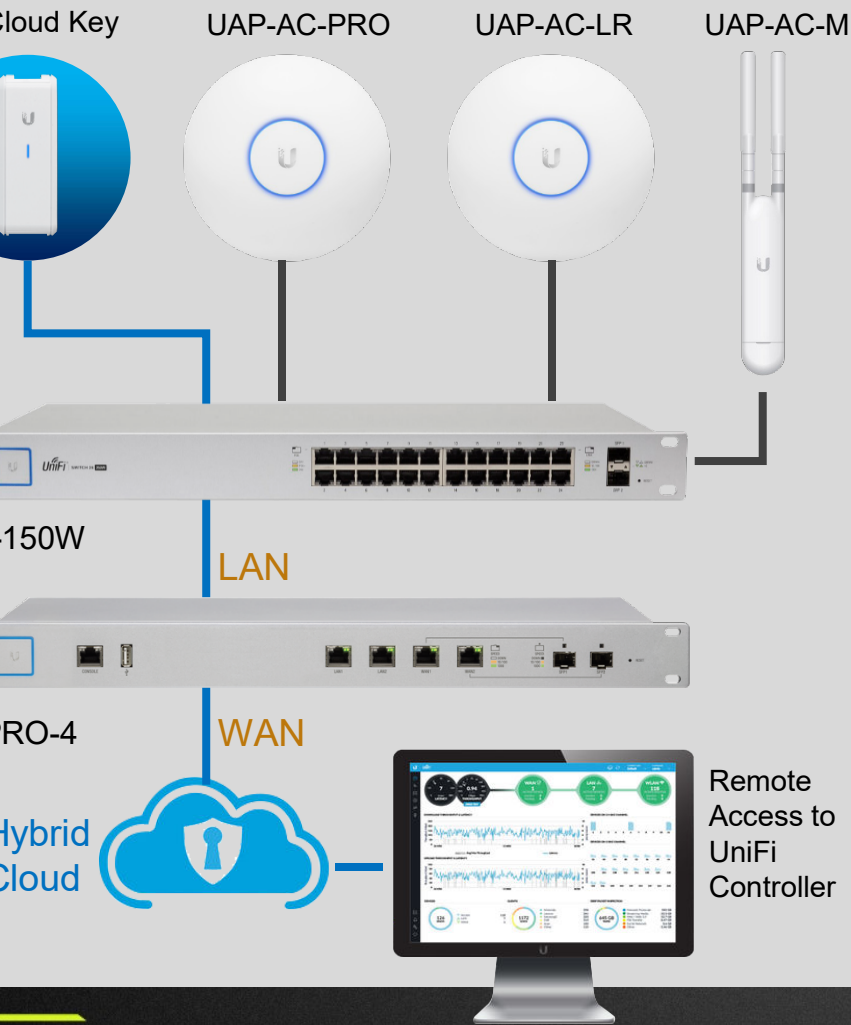
- One machine can meet storage, NVR, router, PoE power supply
- A new generation of IEEE 802.3bt PoE power supply for all kinds of high-profile cameras
- Highly flexible function deployment, high scalability

UGD-1

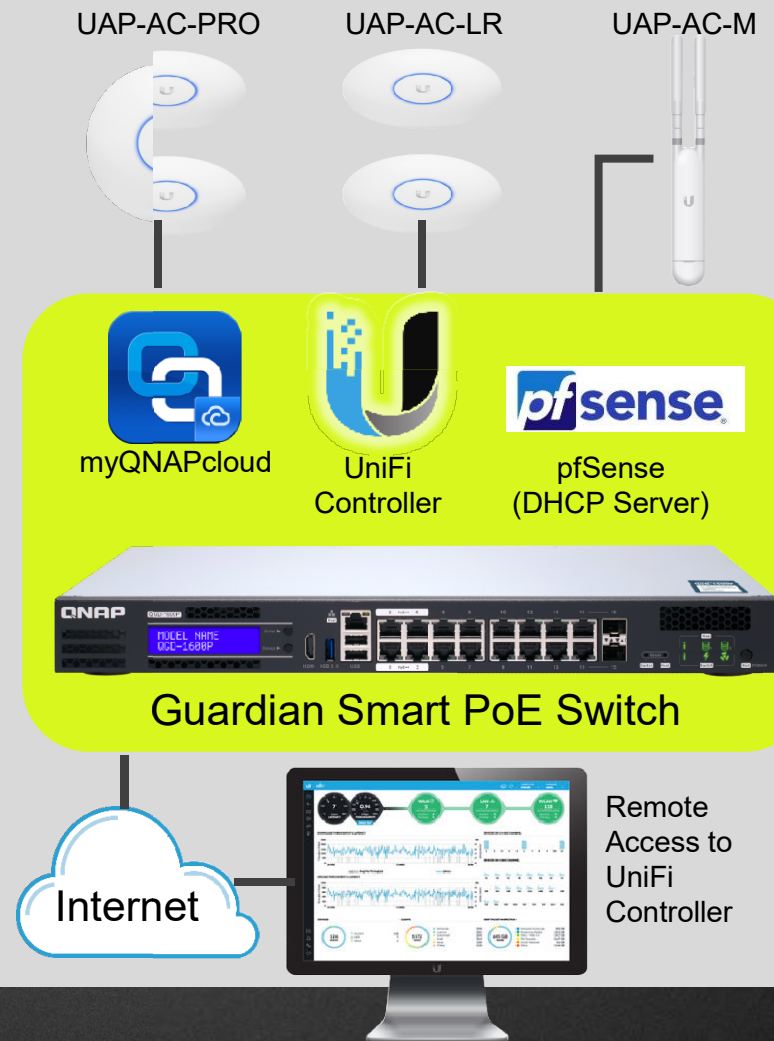


Guardian Commercial Wireless AP Integrated Solution

Traditional Deployment



Guardian solution



Advantages

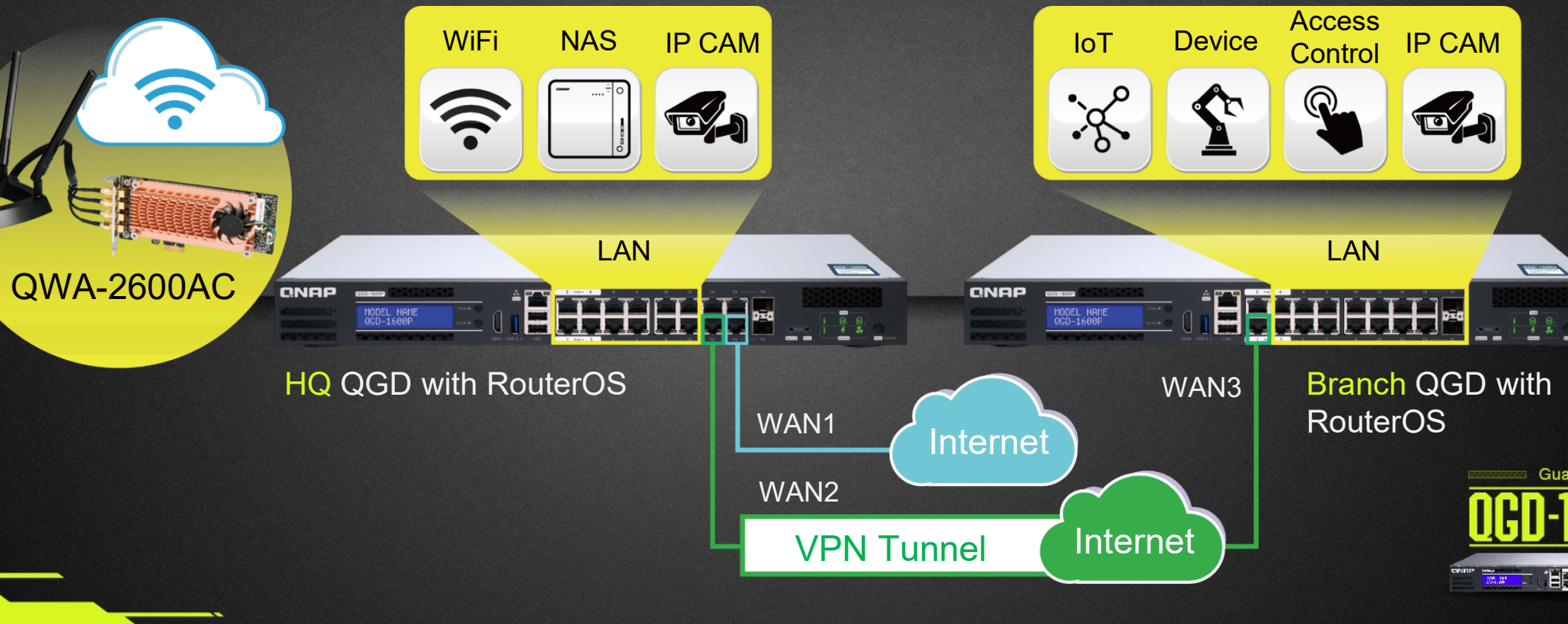
1. One machine covers all features, saving a lot of space.
2. Highly expandable capabilities to support future growth.
3. Integrated solution.

Guardian X RouterOS X QWA-AC2600 network solution

Support for installing RouterOS, OpenWrt

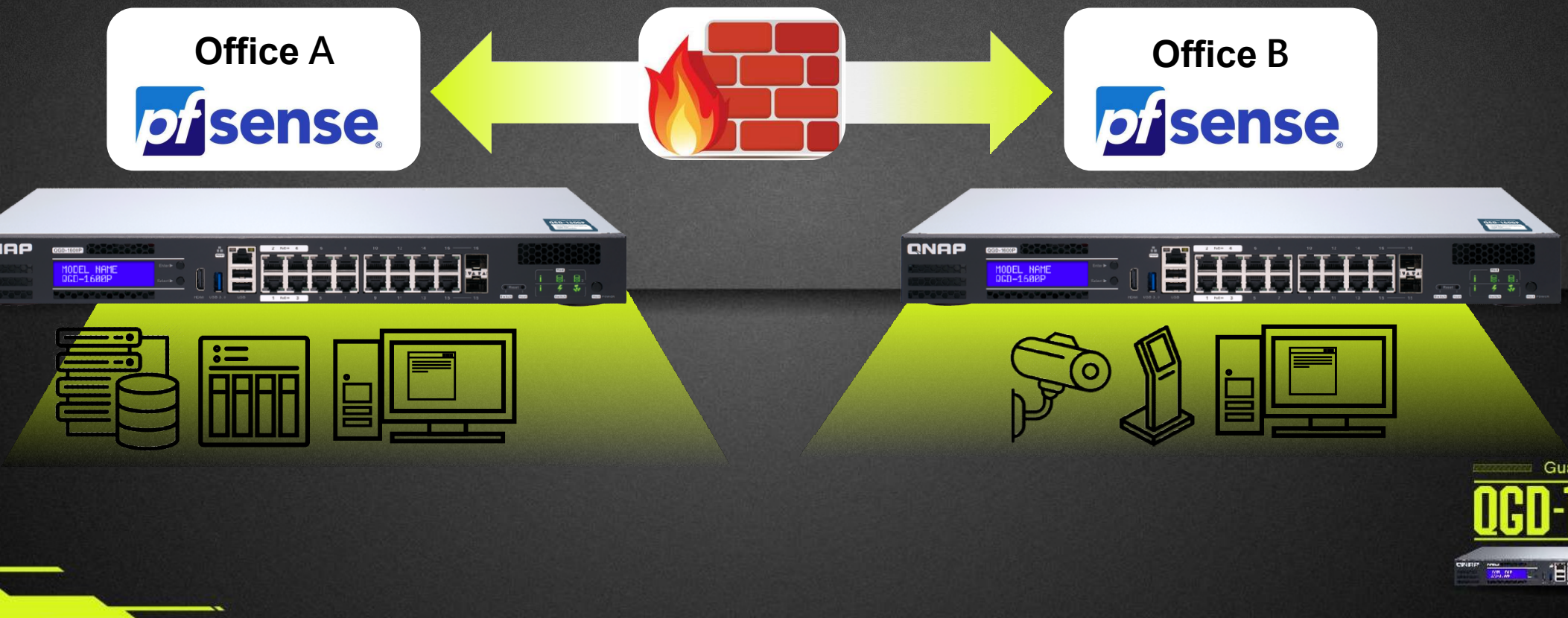
VPN encryption transmission can be established at each office

Share the wireless network to the device with the QWA-2600AC wireless network card



Guardian X pfSense solution

QGD-1600P supports the installation of pfSense firewall software on virtual machines to effectively block external network intrusion threats. In addition, for enterprise intranets, protection and blocking can be implemented according to requirements, which can effectively improve the information security of devices in each intranet.

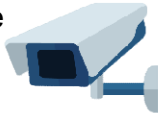


Guardian solution for Restaurant and Retail Store

PoE

Surveillance

Supporting multiple cameras and enabling QVR solution



Electronic menu

Provide power and networking capabilities



Point of Sales

Supports receipt generation and analysis and data storage



Wireless Access

Provides AP device power and supports installation of AP Controller software



Digital Signage

Provide power and content management



Data storage/backup

Save customer data, work documents, letter materials



Guardian
QGD-1

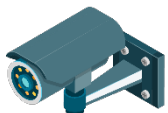


Guardian solution for SMB and workstation

PoE

Surveillance

Supporting multiple cameras and enabling QVR solution



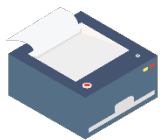
Wireless Access

Provides AP device power and supports installation of AP Controller software



Network device

Enable Network Management and Internet access requirements for devices



Firewall

Protect corporate internal network from external intrusions and prevent internal network attacks



Wake on Lan

allows a computer/ NAS to be turned on or awakened by a network message

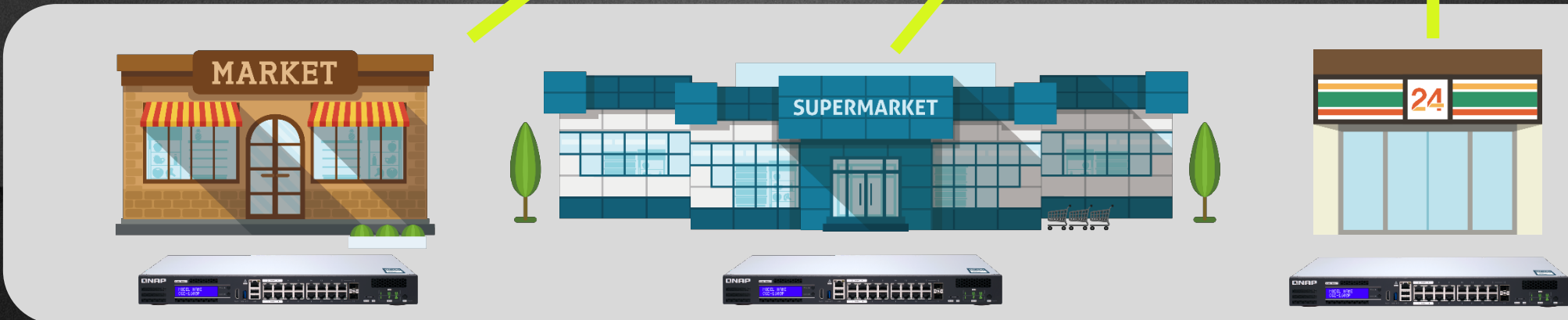


Guardian
QGD-1



main store solution

Install a Guardian switch at each store to create a complete solution and back up the data to headquarters through remote storage.



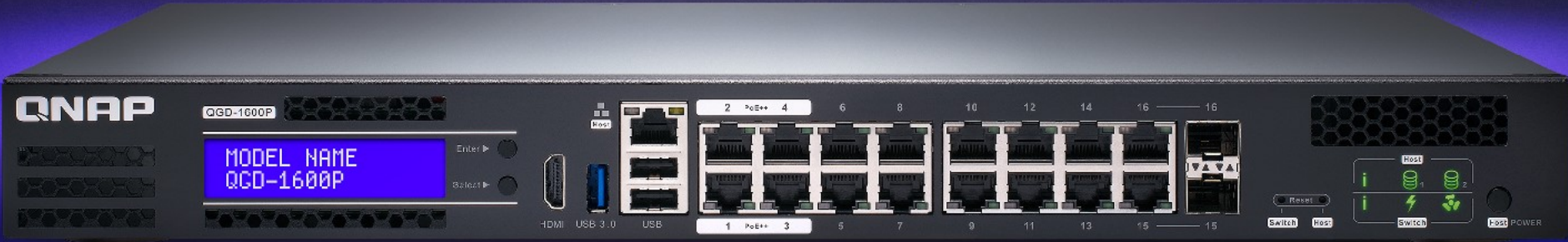
Guardian
QGD-1



QNAP

Your Best Choice

QGD-1600P



Copyright © 2019 QNAP Systems, Inc. All rights reserved. QNAP® and other names of QNAP Products are proprietary marks or registered trademarks of QNAP Systems, Inc. Other products and company names mentioned herein are trademarks of their respective holders.