

# SCIENTIFIC REPORTS



OPEN

## Effect of exogenous selenium supply on photosynthesis, $\text{Na}^+$ accumulation and antioxidative capacity of maize (*Zea mays* L.) under salinity stress

Chaoqiang Jiang<sup>1,2</sup>, Chaolong Zu<sup>1</sup>, Dianjun Lu<sup>2</sup>, Qingsong Zheng<sup>3</sup>, Jia Shen<sup>1</sup>, Huoyan Wang<sup>2</sup> & Decheng Li<sup>2</sup>

Received: 05 July 2016

Accepted: 05 January 2017

Published: 07 February 2017

The mechanism of selenium-mediated salt tolerance has not been fully clarified. This study investigated the possible role of selenium (Se) in regulating maize salt tolerance. A pot experiment was conducted to investigate the role of Se (0, 1, 5 and 25  $\mu\text{M}$   $\text{Na}_2\text{SeO}_3$ ) in photosynthesis, antioxidative capacity and ion homeostasis in maize under salinity. The results showed that Se (1  $\mu\text{M}$ ) relieved the salt-induced inhibitory effects on the plant growth and development of 15-day-old maize plants. Se application (1  $\mu\text{M}$ ) also increased the net photosynthetic rate and alleviated the damage to chloroplast ultrastructure induced by NaCl. The superoxide dismutase (SOD) and ascorbate peroxidase (APX) activities were increased, and *ZmMPK5*, *ZmMPK7* and *ZmCPK11* were markedly up-regulated in the roots of Se-treated plants, likely contributing to the improvement of antioxidant defence systems under salinity. Moreover, 1  $\mu\text{M}$  Se increased  $\text{K}^+$  in the shoots while decreasing  $\text{Na}^+$  in the roots, indicating that Se up-regulates *ZmNHX1* in the roots, which may be involved in  $\text{Na}^+$  compartmentalisation under salinity. The findings from this single experiment require repetition together with measurement of reactive oxygen species (ROS), but nevertheless suggest that exogenous Se alleviates salt stress in maize via the improvement of photosynthetic capacity, the activities of antioxidant enzymes and the regulation of  $\text{Na}^+$  homeostasis.

Salinity stress is one of the major environmental threats that seriously limit plant growth and crop productivity. High salinity inhibits plant growth and development, principally due to osmotic stress and ionic toxicity<sup>1,2</sup>. The osmotic stress induced by salt stress can lead to a dramatic decrease in the stomatal aperture, which decreases the photosynthetic capacity<sup>2</sup>. Therefore, in many plants, growth inhibition is closely related to a decrease in photosynthesis under salt stress<sup>3–6</sup>. High salinity reduces the photosynthetic activity of plants and is associated with stomatal limitations, such as stomatal closure<sup>2,7</sup>, and/or non-stomatal limitations, including chlorophyll degradation<sup>4,8</sup>, chloroplast ultrastructure damage<sup>9,10</sup>, and the degradation of membrane and enzymatic proteins in the photosynthetic apparatus<sup>3,11</sup>. In addition, secondary stresses, such as oxidative stress, are often accompanied by osmotic stress and ionic toxicity, which are harmful to plant cells due to the accumulation of excessive reactive oxygen species (ROS)<sup>2,12</sup>. ROS can cause significant damage to membrane lipids, proteins, nucleic acids and photosynthetic pigments<sup>13</sup>. Therefore, the antioxidant capacity and photosynthetic capacity are highly important for normal plant growth and development under salt stress<sup>2,6</sup>.

Considerable efforts have been made to enhance plant salt tolerance, including the use of exogenous substances, such as nitric oxide<sup>14</sup>, polyamine<sup>15</sup>, brassinolide<sup>16</sup>, silicon<sup>10</sup>, melatonin<sup>5,17</sup> and selenium (Se)<sup>6,18,19</sup>. Se is an essential micronutrient for animals and humans and appears to be a beneficial element for many plants<sup>19,20</sup>. The

<sup>1</sup>Tobacco Research Institute/Maize Research Center, Anhui Academy of Agricultural Sciences, Hefei 230031, P. R. China. <sup>2</sup>State Key Laboratory of Soil and Sustainable Agriculture, Institute of Soil Science, Chinese Academy of Sciences, Nanjing 210008, P. R. China. <sup>3</sup>College of Natural Resources and Environmental Science, Key Laboratory of Marine Biology, Nanjing Agricultural University, Nanjing 210095, P. R. China. Correspondence and requests for materials should be addressed to C.Z. (email: lcz2468@163.com)

Effect	DF	Shoot DW	Root DW	Chlorophyll	Carotenoid	Chlorophyll/carotenoid	$P_n$	$G_s$	$C_i$	$T_r$	Electrolyte leakage	LPO
NaCl	1	<0.001	<0.001	<0.001	<0.001	0.022	<0.001	<0.001	<0.001	<0.001	<0.001	<0.001
Se	3	<0.001	<0.001	<0.001	0.816	0.218	<0.001	<0.001	0.060	<0.001	<0.001	<0.001
NaCl × Se	3	0.319	0.128	0.120	0.747	0.703	0.003	0.208	0.083	0.404	0.017	0.001
							2h				24h	
		SOD	CAT	APX	MPK5	MPK7	CPK11	NHX1	MPK5	MPK7	CPK11	NHX1
NaCl	1	0.380	0.913	<0.001	0.001	<0.001	<0.001	<0.001	0.786	0.856	0.172	0.002
Se	3	<0.001	0.028	0.008	0.620	0.290	0.082	0.767	0.001	<0.001	0.059	0.002
NaCl × Se	3	0.027	0.023	0.657	0.506	0.692	0.226	0.703	0.974	0.724	0.047	0.050
		Shoot					Root					
		K <sup>+</sup>	Na <sup>+</sup>	K <sup>+</sup> /Na <sup>+</sup>	Cl <sup>-</sup>	Se	K <sup>+</sup>	Na <sup>+</sup>	K <sup>+</sup> /Na <sup>+</sup>	Cl <sup>-</sup>	Se	
NaCl	1	<0.001	<0.001	<0.001	<0.001	0.472	<0.001	<0.001	<0.001	<0.001	0.474	
Se	3	0.002	0.816	0.447	0.621	<0.001	0.024	0.008	0.516	0.659	<0.001	
NaCl × Se	3	0.015	0.747	0.512	0.539	0.940	0.279	0.004	0.563	0.387	0.727	

**Table 1. Results of two-way ANOVA ( $p$  values) from the effects of NaCl, selenium (Se) and NaCl × Se interaction, on plant dry weight (Shoot DW: shoot dry weight; Root DW: root dry weight), photosynthetic pigment concentrations (chlorophyll, carotenoid), photosynthetic parameters ( $P_n$ : net photosynthesis;  $G_s$ : stomatal conductance;  $C_i$ : intercellular CO<sub>2</sub> concentration;  $T_r$ : transpiration rate), electrolyte leakage, lipid peroxidation (LPO), antioxidant enzyme activity (SOD, CAT and APX), gene expression levels (MPK5, MPK7, CPK11 and NHX1) and ion concentrations (K<sup>+</sup>, Na<sup>+</sup>, Cl<sup>-</sup>, and Se). For shoot DW and root DW,  $n = 18$ ; for chlorophyll and carotenoid concentrations,  $n = 3$ ; for  $P_n$ ,  $G_s$ ,  $C_i$  and  $T_r$ ,  $n = 4$ ; for electrolyte leakage, LPO, SOD, CAT and APX,  $n = 3$ ; for MPK5, MPK7, CPK11 and NHX1,  $n = 3$ ; for K<sup>+</sup>, Na<sup>+</sup>, Cl<sup>-</sup> and Se concentrations,  $n = 3$ .**

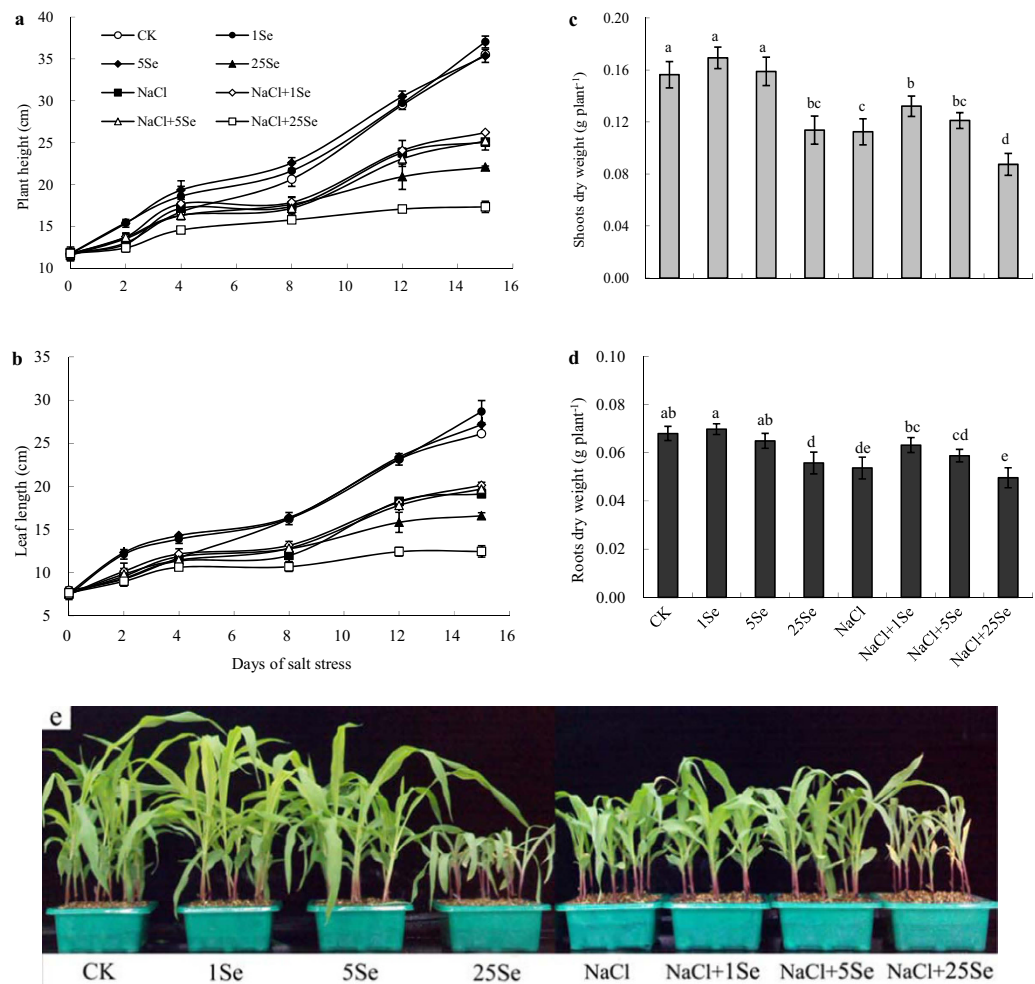
beneficial effect of Se at low concentrations has been well documented in potato<sup>21</sup> and green algae<sup>22</sup>. More importantly, many studies have shown that Se can alleviate the detrimental effects on plants of diverse abiotic stresses, e.g., drought<sup>23</sup>, salt<sup>6,24</sup>, high temperature<sup>25</sup> and heavy metals<sup>26</sup>. Most of these studies have suggested that Se might act as an antioxidant, alleviating oxidative stress induced by environmental stressors, thus improving abiotic stress tolerance in plants. In addition, Kong *et al.*<sup>27</sup> demonstrated that Se application maintained chloroplast and mitochondria ultrastructures, thereby improving photosynthesis and enhancing salt tolerance in sorrel (*Rumex patientia* × *R. tianshanicus*) seedlings. Furthermore, Se application significantly reversed the negative effects of salinity on the photochemical efficiency of photosystem II (PSII) in tomato seedlings<sup>6</sup>. Based on previous observations, the positive effect of Se in plants is believed to be related to the regulation of antioxidant defence systems and photosynthesis. However, the information regarding the effects of exogenous Se supply on photosynthesis and on the antioxidant machinery of salt-stressed plants is limited and needs to be further explored.

Maize (*Zea mays* L.) is one of the most important food crops in the world and also provides raw material for industry<sup>28,29</sup>. Many studies have shown that maize production must double to meet the growing demands of human/animal consumption and biofuel production, particularly in developing countries<sup>29</sup>. Maize is known to be a moderately salt-sensitive plant, and its growth and yield are severely limited at high salinity<sup>30</sup>. Currently, more than 20% of the world's irrigated land is threatened by salinity<sup>31</sup>, which will further limit the crop yield, including that of maize, in the future. In China, maize accounts for more than one-third of cereal production<sup>29</sup>; however, its growth and yield are severely limited at high salinity. Moreover, many major corn-producing areas of China are likely to be threatened by increasing soil salinisation resulting from climate change and water shortages<sup>29</sup>. Therefore, salinity has become one of the most serious threats to maize production<sup>30</sup>. Although several methods have been used to improve plant salt tolerance and to exploit the saline soil, new and more efficient ways to increase crop yield are important for sustainable agricultural development and food security, particularly in drought-prone and high-salinity areas.

The objectives of this study were to evaluate the effects of Se on plant growth, photosynthesis, the antioxidant system and ion homeostasis in NaCl-treated maize plants. Furthermore, physiological and molecular mechanisms for the roles of Se in improving plant salt tolerance were proposed. This systematic investigation provided more information to better understand the mechanisms of the Se-induced enhancement of plant salt tolerance.

## Results

**Plant growth and biomass of maize plant under selenium and NaCl.** The shoot and root dry weights of maize were significantly affected by the application of NaCl and Se ( $p \leq 0.001$ ), the interaction of NaCl and Se application rate had no significant effects on the shoot and root dry weights (Table 1). As shown in Fig. 1, the application of 1 and 5  $\mu$ M Se had no significant effect on the plant growth without salt treatment. However, when Se was applied at a concentration of 25  $\mu$ M, the dry weights of the shoots and roots were reduced by 27% and 18%, respectively, compared with the control. In addition, NaCl reduced the dry weights of the shoots and roots by 28% and 21%, respectively, compared with the control (Fig. 1c and d). In salt-treated plants, the application of 1  $\mu$ M Se significantly increased the dry weights of the shoots and roots by 17% and 18%, respectively, and Se-treated plants exhibited better growth (Fig. 1e). By contrast, 25  $\mu$ M Se reduced plant height, leaf length and dry weight when plants were cultured with 100 mM NaCl.



**Figure 1.** Effects of Se on plant height (a), leaf length (b), dry weight (c,d), and growth performance (e) of non-stressed or salt-stressed maize plants. The control plants (CK) were cultured in half-strength Hoagland's solution. Different treatments were added with or without different concentrations of Se or NaCl. The abbreviations 1 Se, 5 Se and 25 Se indicate 1  $\mu\text{M}$   $\text{Na}_2\text{SeO}_3$ , 5  $\mu\text{M}$   $\text{Na}_2\text{SeO}_3$  and 25  $\mu\text{M}$   $\text{Na}_2\text{SeO}_3$ , respectively (details are shown in the Materials and Methods). Data are presented as the means  $\pm$  SDs ( $n = 18$ ). Columns labelled with different letters between treatments represent significant differences ( $p < 0.05$ ).

**Photosynthetic pigments and gas exchange under selenium and NaCl.** NaCl significantly affected chlorophyll and carotenoid contents in maize, while application rate of Se had significant effects on carotenoid content (Table 1). As shown in Table 2, NaCl treatment caused 24% and 14% decreases in chlorophyll and carotenoid content, respectively, compared with the control. In salt-treated plants, 1  $\mu\text{M}$  Se-treated plants showed higher chlorophyll (13%) and carotenoid (7%) contents than the plants grown without Se application. However, the chlorophyll contents and the chlorophyll/carotenoid ratio were progressively decreased by 25  $\mu\text{M}$  Se applications in both the salt-treated and non-treated plants.

NaCl and application of high Se markedly decreased the net photosynthetic rate ( $P_n$ ) in maize leaves, and the interaction of NaCl and Se significantly affected the  $P_n$  (Table 1). Under salt stress, Se application at concentrations of 1  $\mu\text{M}$  increased  $P_n$  by 19% compared with non-Se-treated plants, whereas 25  $\mu\text{M}$  Se progressively decreased  $P_n$  (Table 3). Similarly, the stomatal conductance ( $G_s$ ) and transpiration rate ( $T_r$ ) in the leaf were significantly reduced by salt stress, and the application of 1  $\mu\text{M}$  Se alleviated these adverse effects under salt stress. In contrast, Se application had no significant effect on the intercellular  $\text{CO}_2$  concentration ( $C_i$ ), and even reduced the  $C_i$  in the maize leaf under salt stress (Table 3).

**Chloroplast ultrastructure in leaf in response to selenium and NaCl.** As shown in Fig. 2, under salt stress, prominent damage was observed in the chloroplast ultrastructure of maize leaves. The chloroplasts were characterised by compressed grana lamellae, disrupted stroma lamella and distorted thylakoids. No significant differences in the ultrastructure of chloroplasts were observed between the control and low-concentration Se (1 and 5  $\mu\text{M}$ ) alone treatments, but 25  $\mu\text{M}$  Se clearly damaged the chloroplast ultrastructure. However, 1  $\mu\text{M}$  Se application alleviated the structural damage to the chloroplasts induced by NaCl, resulting in a more integrated internal lamella, a thicker grana lamellae, and a more regular shape of the thylakoids in the leaf than in the plants treated with NaCl alone.

Treatment	Chlorophyll		Carotenoid		Chlorophyll/carotenoid
	Mean (mg g <sup>-1</sup> FW)	Percentage of CK (%)	Mean (mg g <sup>-1</sup> FW)	Percentage of CK (%)	
CK	1.84 ± 0.12ab		0.28 ± 0.01ab		6.61 ± 0.42a
1Se	1.94 ± 0.12a	105.42	0.29 ± 0.01a	103.54	6.72 ± 0.12a
5Se	1.76 ± 0.11b	95.62	0.28 ± 0.01a	101.61	6.24 ± 0.59ab
25Se	1.49 ± 0.06cd	81.24	0.25 ± 0.03bc	88.20	6.17 ± 0.99ab
NaCl	1.40 ± 0.09de	76.37	0.24 ± 0.02c	86.27	5.85 ± 0.09ab
NaCl + 1Se	1.58 ± 0.05c	85.99	0.26 ± 0.02abc	91.99	6.20 ± 0.53ab
NaCl + 5Se	1.55 ± 0.07cd	84.31	0.25 ± 0.02abc	91.60	6.11 ± 0.49ab
NaCl + 25Se	1.30 ± 0.10e	70.92	0.24 ± 0.02c	85.79	5.46 ± 0.10b

**Table 2. Effects of Se on chlorophyll and carotenoid concentrations in non-stressed or salt-stressed maize seedlings.** The control plants (CK) were cultured in half-strength Hoagland's solution. Different treatments were added with or without different concentrations of Se or NaCl. The abbreviations 1 Se, 5 Se and 25 Se indicate 1 μM Na<sub>2</sub>SeO<sub>3</sub>, 5 μM Na<sub>2</sub>SeO<sub>3</sub> and 25 μM Na<sub>2</sub>SeO<sub>3</sub>, respectively (details are shown in the Materials and Methods). Data are presented as the means ± SDs (n = 3). Different letters within a column represent significant differences ( $p < 0.05$ ).

Treatments	$P_n$ (μmol CO <sub>2</sub> m <sup>-2</sup> s <sup>-1</sup> )	$G_s$ (mol H <sub>2</sub> O m <sup>-2</sup> s <sup>-1</sup> )	$C_i$ (μmol CO <sub>2</sub> mol <sup>-1</sup> )	$T_r$ (mmol H <sub>2</sub> O m <sup>-2</sup> s <sup>-1</sup> )
CK	10.69 ± 0.61a	0.11 ± 0.02a	267.87 ± 26.74ab	1.31 ± 0.19a
1Se	11.15 ± 0.10a	0.10 ± 0.00a	251.47 ± 7.16b	1.23 ± 0.04a
5Se	9.03 ± 0.83b	0.10 ± 0.02a	290.16 ± 17.19a	1.20 ± 0.21a
25Se	7.35 ± 0.72d	0.07 ± 0.01bc	256.21 ± 31.98ab	0.86 ± 0.11b
NaCl	7.24 ± 0.45d	0.06 ± 0.01c	232.48 ± 20.24bc	0.71 ± 0.14bc
NaCl + 1Se	8.60 ± 0.67bc	0.07 ± 0.01b	200.13 ± 18.18cd	0.68 ± 0.09c
NaCl + 5Se	7.99 ± 0.36cd	0.05 ± 0.01c	194.97 ± 27.58d	0.72 ± 0.10bc
NaCl + 25Se	5.17 ± 0.38e	0.04 ± 0.00d	186.40 ± 25.10d	0.47 ± 0.04d

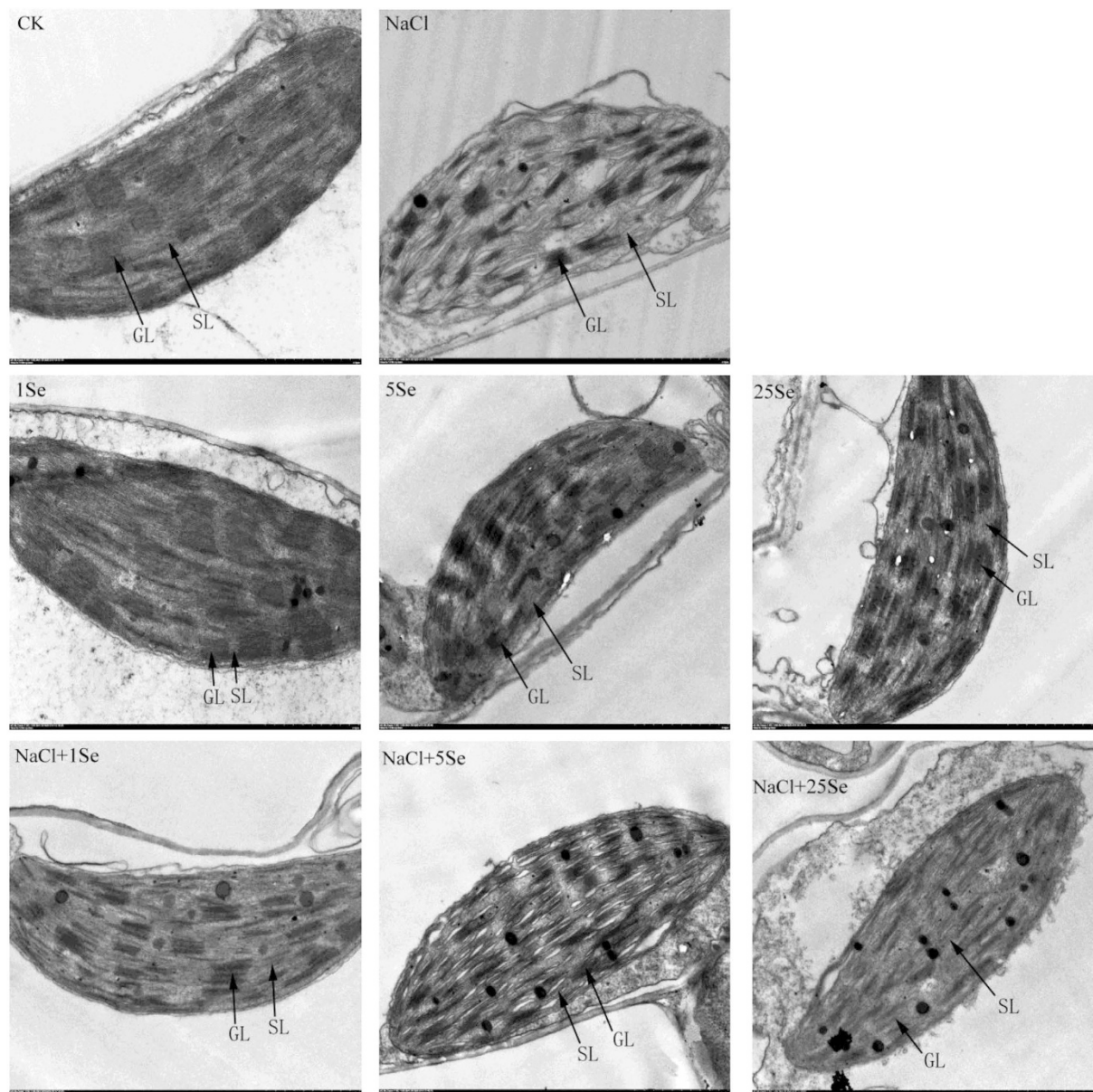
**Table 3. Effects of Se on photosynthesis in non-stressed or salt-stressed maize seedlings.** The control plants (CK) were cultured in half-strength Hoagland's solution. Different treatments were added with or without different concentrations of Se or NaCl. The abbreviations 1 Se, 5 Se and 25 Se indicate 1 μM Na<sub>2</sub>SeO<sub>3</sub>, 5 μM Na<sub>2</sub>SeO<sub>3</sub> and 25 μM Na<sub>2</sub>SeO<sub>3</sub>, respectively (details are shown in the Materials and Methods). Data are presented as the means ± SDs (n = 4). Different letters within a column represent significant differences ( $p < 0.05$ ).

### Cell membrane damage and antioxidant enzymes activity in response to selenium and NaCl.

Salt-treated plants had significantly higher electrolyte leakage (1.9-fold) and lipid peroxidation (LPO) levels (2.7-fold) than the control plants (Fig. 3 and Table 1). No significant differences in electrolyte leakage were observed among plants grown with 1 and 5 μM Se and without Se application under non-salt stress conditions, but electrolyte leakage was significantly increased by 100% in plants treated with 25 μM Se. Under salt stress, the application of 1 and 5 μM Se decreased electrolyte leakage by 30% and 18%, respectively, compared with plants without Se application (Fig. 3a). Similarly, under salt stress, the LPO levels in 1 and 5 μM Se-treated plants decreased by 42% and 36%, respectively, compared with non-Se-treated plants.

The application of Se significantly affected superoxide dismutase (SOD), catalase (CAT) and ascorbate peroxidase (APX) in maize, but NaCl only significantly affected the APX (Table 1). As showed in Fig. 4, Se activated the SOD enzyme in plants grown with or without NaCl, particularly at 1 and 5 μM Se concentrations. Under salt stress, SOD activity was increased by 13% with the application of 1 μM Se, but a higher Se concentration (25 μM) decreased its activity (Fig. 4a). Similarly, NaCl increased CAT activity by 19%, and 1 μM Se increased its activity by 27% in non-salt-treated plants. However, an obvious increase in APX activity was detected in Se-treated plants grown with or without NaCl. More importantly, under salt stress, APX activity increased by 24% and 19% in 1 and 5 μM Se-treated plants, respectively, compared with non-Se-treated plants (Fig. 4c).

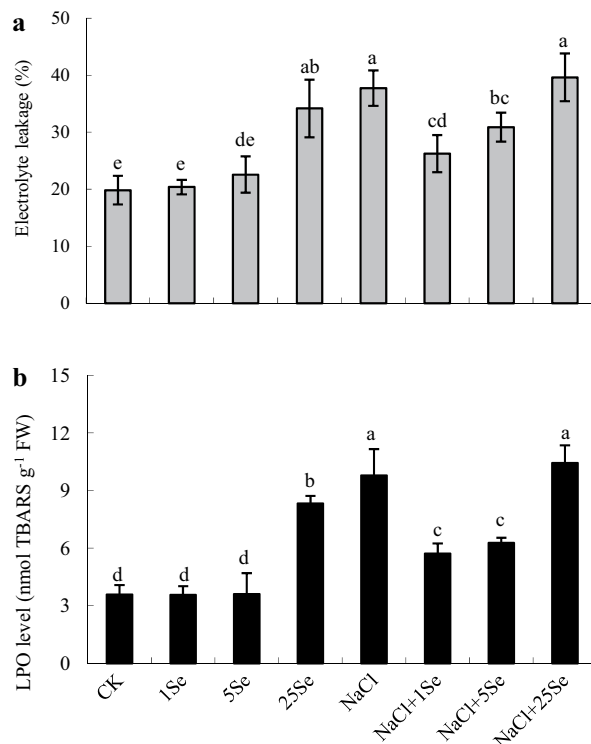
**ZmMPK5, ZmMPK7 and ZmCPK11 expression in response to selenium and NaCl.** We further examined the *ZmMPK5*, *ZmMPK7* and *ZmCPK11* gene expression levels in the roots at 2 and 24 h after treatment (Fig. 5). Under salt stress, *ZmMPK5*, *ZmMPK7* and *ZmCPK11* were significantly down-regulated in the roots at 2 h (Fig. 5 and Table 1,  $p \leq 0.001$ ); *ZmCPK11* was also down-regulated at 24 h. Similarly, the application of 1 μM Se significantly down-regulated all of these genes at 2 h under salt stress (Fig. 5a). However, Se application caused a clear increase in *ZmMPK5* and *ZmMPK7* up-regulation in the roots at 24 h. Under salt stress, the relative expression levels of *ZmMPK5* and *ZmMPK7* in roots treated with 1 μM Se were approximately 1.3-fold those found in non-Se-treated plants, and *ZmCPK11* expression also increased by 58% (Fig. 5b).



**Figure 2.** Effects of Se on the chloroplast ultrastructure of leaves of non-stressed or salt-stressed maize plants. The control plants (CK) were cultured in half-strength Hoagland's solution. Different treatments were added with or without different concentrations of Se or NaCl. The abbreviations 1 Se, 5 Se and 25 Se indicate 1  $\mu\text{M}$   $\text{Na}_2\text{SeO}_3$ , 5  $\mu\text{M}$   $\text{Na}_2\text{SeO}_3$  and 25  $\mu\text{M}$   $\text{Na}_2\text{SeO}_3$ , respectively (details are shown in the Materials and Methods).

**$\text{K}^+$ ,  $\text{Na}^+$ ,  $\text{Cl}^-$  and Se contents and *ZmNHX1* expression under selenium and NaCl.** NaCl significantly affected  $\text{Na}^+$ ,  $\text{Cl}^-$  and  $\text{K}^+$  contents in both shoot and root of maize plant ( $p \leq 0.001$ ), and Se application significantly affected  $\text{K}^+$  contents in both shoot and root, and  $\text{Na}^+$  contents in root ( $p \leq 0.05$ ) (Table 1). The interaction of NaCl and Se only significantly affected  $\text{K}^+$  content in shoot and  $\text{Na}^+$  contents in root ( $p \leq 0.05$ ) (Table 1). As shown in Table 4, no significant differences in  $\text{K}^+$  contents were detected in the shoots and roots of 1 and 5  $\mu\text{M}$  Se-treated plants compared with control plants, whereas 25  $\mu\text{M}$  Se reduced the  $\text{K}^+$  content. Under salt stress, the  $\text{K}^+$  contents in the shoots and roots were decreased by 34% and 61%, respectively. However, clear increases in  $\text{K}^+$  content were observed in the shoots of 1 and 5  $\mu\text{M}$  Se-treated plants grown with NaCl. By contrast, salt-treated plants exhibited  $\text{Na}^+$  content at least 6.4-fold higher than in control plants, whereas the application of 1 and 5  $\mu\text{M}$  Se decreased  $\text{Na}^+$  content in the roots by approximately 15% in plants grown with NaCl. Thus, the  $\text{K}^+/\text{Na}^+$  ratios, which were high in the control plants, decreased greatly under salt stress. The  $\text{K}^+/\text{Na}^+$  ratios were not significantly affected by Se application. In addition, NaCl markedly increased  $\text{Cl}^-$  contents in the shoots and roots, but Se application had no significant effect on  $\text{Cl}^-$  contents in maize.

To investigate whether Se is involved in  $\text{Na}^+$  and  $\text{K}^+$  homeostasis under salt stress, the *ZmNHX1* expression in the roots was examined. As shown in Fig. 6, NaCl significantly induced *ZmNHX1* expression in the roots at 2 h



**Figure 3.** Effects of Se on electrolyte leakage (a) and LPO levels (b) in the leaves of non-stressed or salt-stressed maize plants. The control plants (CK) were cultured in half-strength Hoagland's solution. Different treatments were added with or without different concentrations of Se or NaCl. The abbreviations 1 Se, 5 Se and 25 Se indicate 1  $\mu\text{M}$   $\text{Na}_2\text{SeO}_3$ , 5  $\mu\text{M}$   $\text{Na}_2\text{SeO}_3$  and 25  $\mu\text{M}$   $\text{Na}_2\text{SeO}_3$ , respectively (details are shown in the Materials and Methods). Data are presented as the means  $\pm$  SDs ( $n = 3$ ). Columns labelled with different letters between treatments represent significant differences ( $p < 0.05$ ).

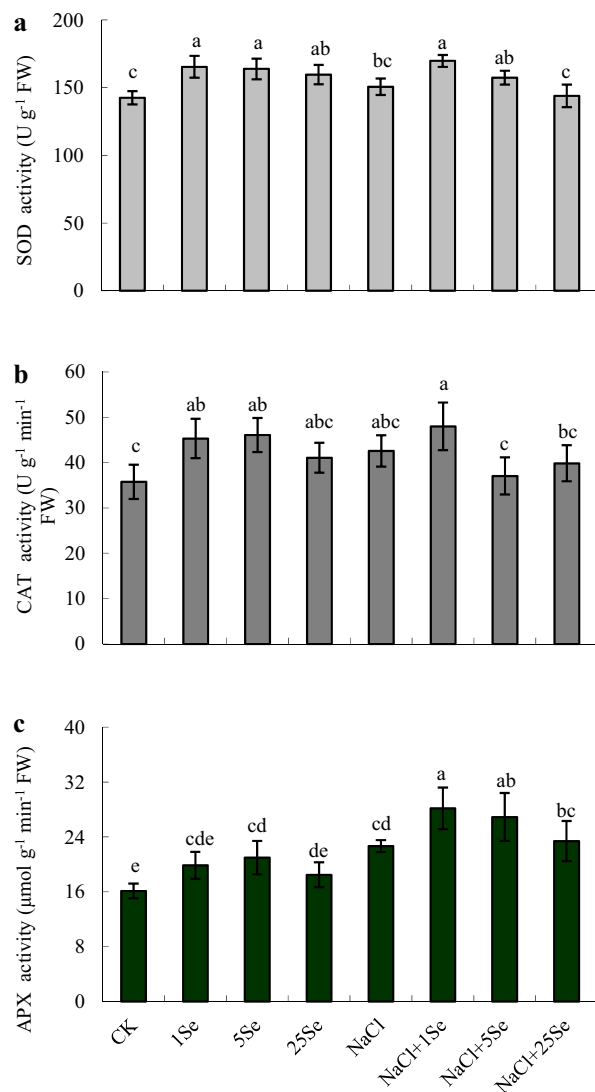
but had no significant effect on the expression of this gene after 24 h of treatment. However, *ZmNHX1* expression in 1  $\mu\text{M}$  Se-treated maize roots was significantly increased at 24 h after salt stress (Table 1,  $p = 0.002$ ).

The Se contents in the shoots and roots increased exponentially with increasing Se application rate (Fig. 7 and Table 1,  $p \leq 0.001$ ). For example, under non-salt treatments, Se application at a concentration of 5  $\mu\text{M}$  caused the Se content in the shoots to increase from 17.11  $\text{mg kg}^{-1}$  to 44.74  $\text{mg kg}^{-1}$  relative to the 1  $\mu\text{M}$  Se treatment. Moreover, Se content in the shoots increased to 160.79  $\text{mg kg}^{-1}$  after treatment with 25  $\mu\text{M}$  Se. However, there were no significant effects of NaCl on the Se content.

## Discussion

Salt stress has been extensively shown to severely reduce plant growth and limit crop production<sup>2</sup>. Maize is considered a moderately salt-sensitive crop; therefore, its growth and yield are severely reduced by salinity<sup>30</sup>. In this study, plant height, leaf length and dry weight were significantly reduced in maize plants grown with 100 mM NaCl for 15 days (Fig. 1). However, the growth inhibition under salt stress was alleviated by the application of Se (1  $\mu\text{M}$ ) (Fig. 1). Se is considered to be beneficial for plant growth and development, particularly in hyperaccumulators<sup>32</sup>. Previous studies have shown that Se improves plant salt tolerance<sup>6,18,19,24</sup>. Hawrylak-Nowak<sup>18</sup> found that Se application (5 and 10  $\mu\text{M}$ ) significantly increased the plant dry weight of NaCl-treated cucumber seedlings, and Diao *et al.*<sup>6</sup> also observed that exogenous Se significantly increased the dry weight of tomato seedlings under salinity. In this current study, the application of 1  $\mu\text{M}$  Se improved the tolerance of maize to salt stress, showing that Se increases the plant height, leaf length and biomass of maize under salinity. Therefore, the results of this study further confirmed the beneficial effects of Se in plants subjected to stress conditions. By contrast, the application of 25  $\mu\text{M}$  Se resulted in significant decreases in plant height, leaf length and biomass accumulation. Similar results were observed by Lehotai *et al.*<sup>33</sup>, who showed that a high Se concentration (40  $\mu\text{M}$ ) significantly inhibited the root growth of *Arabidopsis thaliana*, and Hawrylak-Nowak<sup>18</sup> observed that high levels of Se (20  $\mu\text{M}$ ) had no significant effect on the plant growth of cucumber seedlings. Thus, Se has dual effects on maize plants: it stimulates plant growth at low concentrations but is toxic to plant growth and development at high concentrations.

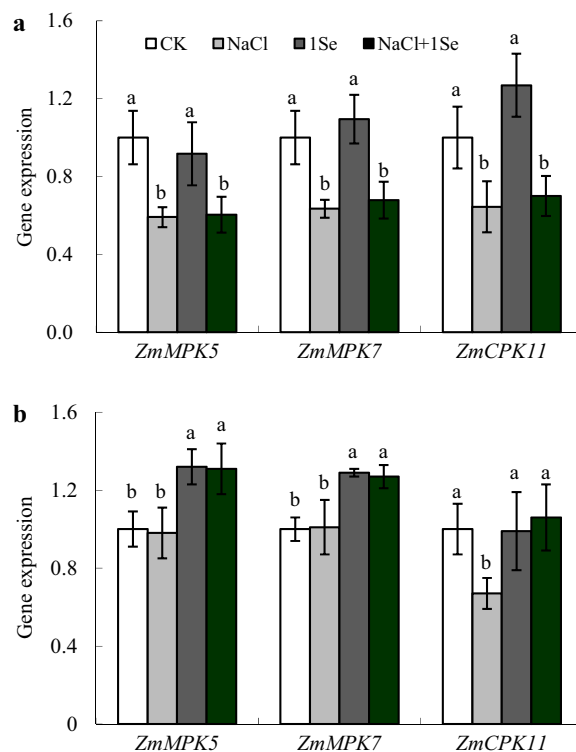
Similar to plant growth, photosynthesis is one of the primary processes affected by salinity<sup>2</sup>. This study observed that the photosynthesis in maize leaves was reduced under salt stress. However, the application of low concentrations of Se (1  $\mu\text{M}$ ) significantly increased the net photosynthetic rate in maize plants grown under salt stress (Table 3). The improvement of photosynthesis in response to Se has also been observed in tomato under salt stress<sup>6</sup> and in sorghum under high-temperature stress<sup>25</sup>. In addition, 1  $\mu\text{M}$  Se-treated plants showed higher chlorophyll content than non-Se-treated plants under salt stress (Table 2), and the damage to chloroplasts



**Figure 4.** Effects of Se on SOD (a), CAT (b) and APX (c) activity levels in the leaves of non-stressed or salt-stressed maize plants. The control plants (CK) were cultured in half-strength Hoagland's solution. Different treatments were added with or without different concentrations of Se or NaCl. The abbreviations 1 Se, 5 Se and 25 Se indicate 1  $\mu\text{M}$   $\text{Na}_2\text{SeO}_3$ , 5  $\mu\text{M}$   $\text{Na}_2\text{SeO}_3$  and 25  $\mu\text{M}$   $\text{Na}_2\text{SeO}_3$ , respectively (details are shown in the Materials and Methods). Data are presented as the means  $\pm$  SDs ( $n = 3$ ). Columns labelled with different letters between treatments represent significant differences ( $p < 0.05$ ).

induced by NaCl was alleviated by Se application (Fig. 2). Similar effects of Se on chlorophyll content and chloroplast ultrastructure have been detected in sorrel (*Rumex patientia*  $\times$  *R. tianshanicus*)<sup>27</sup>, cucumber<sup>18</sup> and tomato<sup>6</sup> under salt stress. Furthermore, Se accelerated chlorophyll biosynthesis by facilitating respiration and electron transport in the respiratory chain<sup>34</sup>. Therefore, restoration of the photosynthetic capacity in salt-treated maize plants by Se application may be related to the increases in chlorophyll content and the preservation of chloroplast ultrastructure. However, this study observed that a high Se concentration (25  $\mu\text{M}$ ) aggravated the damage to the photosynthetic system in maize plants, resulting in further decreases in net photosynthetic rate, stomatal conductance, transpiration rate and chlorophyll content, as well as more drastic damage to the chloroplast ultrastructure. Therefore, low concentrations of Se (1  $\mu\text{M}$ ) might improve photosynthesis in maize plants and result in better growth under salinity.

It is well established that salt stress causes lipid peroxidation and might result in increases in membrane permeability and ion leakage<sup>14</sup>. In this study, salt stress resulted in severe damage to the maize plants, and corresponding increases in electrolyte leakage and LPO levels were observed in maize leaves under salt stress. However, 1  $\mu\text{M}$  Se significantly decreased the electrolyte leakage and LPO levels in salt-treated plants (Fig. 3). Electrolyte leakage is commonly believed to be an important index of cell membrane permeability. Lower lipid peroxidation resulting from elevated activities of antioxidants under salt stress was also reported in silicon-treated cucumber under salt stress<sup>35</sup>. Recently, Diao *et al.*<sup>6</sup> found that Se application significantly enhanced the antioxidant defence system in the chloroplasts of tomato seedlings under salt stress, which could be responsible for the improvement



**Figure 5.** Real-time quantitative PCR analysis of *ZmMPK5*, *ZmMPK7* and *ZmCPK11* mRNA accumulation in the roots of maize plants treated with NaCl (0 and 100 mM) and Se (0 and 1  $\mu$ M) for 2 h (a) or 24 h (b). CK: half-strength Hoagland's solution; NaCl: half-strength Hoagland's solution + 100 mM NaCl; 1 Se: half-strength Hoagland's solution + 1  $\mu$ M  $\text{Na}_2\text{SeO}_3$ ; NaCl + 1 Se: half-strength Hoagland's solution + 100 mM NaCl + 1  $\mu$ M  $\text{Na}_2\text{SeO}_3$ . Data are presented as the means  $\pm$  SDs ( $n = 3$ ). For each gene expression, columns labelled with different letters between treatments represent significant differences ( $p < 0.05$ ).

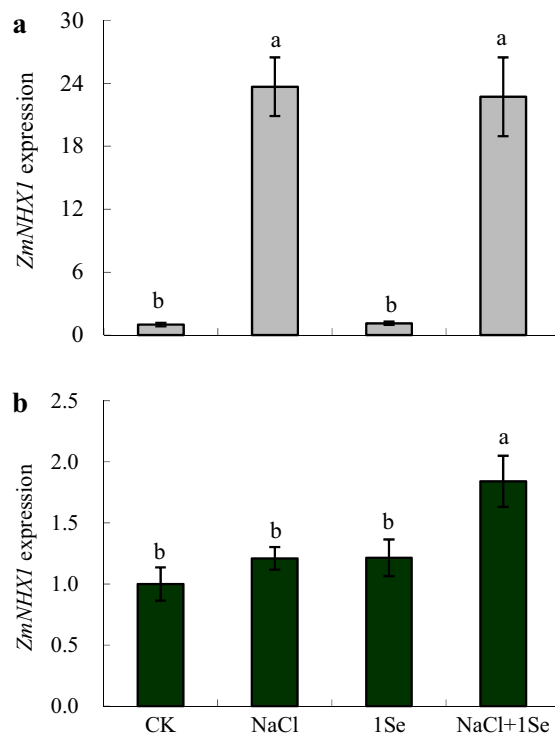
Treatments	Shoots				Roots			
	$\text{K}^+$ ( $\text{g kg}^{-1}$ )	$\text{Na}^+$ ( $\text{g kg}^{-1}$ )	$\text{K}^+/\text{Na}^+$	$\text{Cl}^-$ ( $\text{g kg}^{-1}$ )	$\text{K}^+$ ( $\text{g kg}^{-1}$ )	$\text{Na}^+$ ( $\text{g kg}^{-1}$ )	$\text{K}^+/\text{Na}^+$	$\text{Cl}^-$ ( $\text{g kg}^{-1}$ )
CK	$62.71 \pm 2.65\text{a}$	$2.07 \pm 0.23\text{b}$	$17.87 \pm \text{ab}$	$0.40 \pm 0.03\text{b}$	$34.64 \pm 3.13\text{a}$	$4.52 \pm 0.56\text{c}$	$4.59 \pm 0.98\text{a}$	$0.19 \pm 0.03\text{b}$
1Se	$63.60 \pm 3.71\text{a}$	$1.98 \pm 0.42\text{b}$	$19.36 \pm \text{a}$	$0.41 \pm 0.04\text{b}$	$34.43 \pm 2.87\text{a}$	$4.68 \pm 0.58\text{c}$	$4.35 \pm 0.40\text{a}$	$0.22 \pm 0.03\text{b}$
5Se	$59.69 \pm 4.78\text{a}$	$2.17 \pm 0.54\text{b}$	$16.76 \pm \text{ab}$	$0.43 \pm 0.04\text{b}$	$33.03 \pm 2.12\text{a}$	$4.84 \pm 1.17\text{c}$	$4.20 \pm 1.20\text{a}$	$0.23 \pm 0.04\text{b}$
25Se	$51.47 \pm 1.15\text{b}$	$2.11 \pm 0.59\text{b}$	$15.13 \pm \text{b}$	$0.35 \pm 0.04\text{b}$	$28.36 \pm 4.75\text{b}$	$4.60 \pm 0.84\text{c}$	$3.64 \pm 0.32\text{a}$	$0.21 \pm 0.02\text{b}$
NaCl	$41.44 \pm 3.02\text{d}$	$22.57 \pm 0.95\text{a}$	$1.08 \pm \text{c}$	$3.85 \pm 0.18\text{a}$	$13.48 \pm 0.97\text{c}$	$33.24 \pm 1.72\text{a}$	$0.24 \pm 0.02\text{b}$	$2.89 \pm 0.21\text{a}$
NaCl + 1Se	$52.55 \pm 3.59\text{b}$	$22.37 \pm 1.59\text{a}$	$1.39 \pm \text{c}$	$3.72 \pm 0.16\text{a}$	$16.84 \pm 1.43\text{c}$	$28.09 \pm 0.76\text{b}$	$0.35 \pm 0.02\text{b}$	$2.73 \pm 0.13\text{a}$
NaCl + 5Se	$47.79 \pm 5.01\text{bc}$	$21.84 \pm 1.21\text{a}$	$1.29 \pm \text{c}$	$3.71 \pm 0.11\text{a}$	$15.97 \pm 1.58\text{c}$	$28.20 \pm 1.87\text{b}$	$0.33 \pm 0.01\text{b}$	$2.78 \pm 0.15\text{a}$
NaCl + 25Se	$44.98 \pm 2.17\text{cd}$	$22.83 \pm 0.48\text{a}$	$1.16 \pm \text{c}$	$3.74 \pm 0.13\text{a}$	$13.06 \pm 1.07\text{c}$	$31.53 \pm 1.66\text{a}$	$0.24 \pm 0.02\text{b}$	$2.88 \pm 0.12\text{a}$

**Table 4.** Effects of Se on  $\text{K}^+$ ,  $\text{Na}^+$  and  $\text{Cl}^-$  concentrations in the shoots and roots of non-stressed or salt-stressed maize plants. The control plants (CK) were cultured in half-strength Hoagland's solution. Different treatments were added with or without different concentrations of Se or NaCl. The abbreviations 1 Se, 5 Se and 25 Se indicate 1  $\mu$ M  $\text{Na}_2\text{SeO}_3$ , 5  $\mu$ M  $\text{Na}_2\text{SeO}_3$  and 25  $\mu$ M  $\text{Na}_2\text{SeO}_3$ , respectively (details are shown in the Materials and Methods). Data are presented as the means  $\pm$  SDs ( $n = 3$ ). Different letters within a column represent significant differences ( $p < 0.05$ ).

in photosynthesis. These results further confirm that Se plays important roles in the maintenance of cell membrane structure and cell integrity under salt stress. The current results on the chloroplast ultrastructure in Se-treated leaves also confirm this observation (Fig. 2).

Salt stress causes excess ROS and results in oxidative stress primarily due to the overproduction of active oxygen<sup>2,12</sup>. Excess ROS formation induces lipid peroxidation, severely impairs proteins and DNA, thus inhibiting signal transduction, and could interfere with normal cellular function, even resulting in cell death<sup>36</sup>. Previous studies have demonstrated that exogenous Se can increase the activity of antioxidant enzymes and the tolerance of plants subjected to various stresses<sup>6,24,27</sup>. Under salt stress, clear increases in SOD and APX activity levels were observed in Se-treated plants compared with non-Se-treated plants (Fig. 4). These observations were consistent



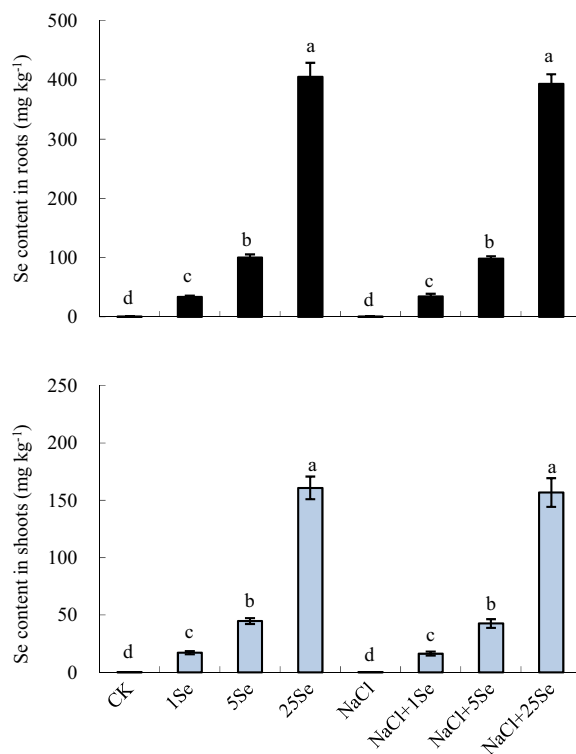


**Figure 6.** Real-time quantitative PCR analysis of *ZmNHX1* mRNA accumulation in the roots of maize plants treated with NaCl (0 and 100 mM) and Se (0 and 1  $\mu$ M) for 2 h (a) or 24 h (b). CK: half-strength Hoagland's solution; NaCl: half-strength Hoagland's solution + 100 mM NaCl; 1 Se: half-strength Hoagland's solution + 1  $\mu$ M Na<sub>2</sub>SeO<sub>3</sub>; NaCl + 1 Se: half-strength Hoagland's solution + 100 mM NaCl + 1  $\mu$ M Na<sub>2</sub>SeO<sub>3</sub>. Data are presented as the means  $\pm$  SDs (n = 3). Columns labelled with different letters between treatments represent significant differences ( $p < 0.05$ ).

with the findings in sorrel<sup>27</sup>, rapeseed<sup>24</sup> and tomato seedlings<sup>6</sup> under salt stress. The activity levels of SOD, CAT and APX are crucial for scavenging ROS in plants. More importantly, the activity levels and balance of these enzymes are thought to be integral in converting the superoxide radical and hydrogen peroxide and in protecting plants from environmental stress<sup>36</sup>. SOD is believed to serve as the first line of antioxidant defence against ROS by catalysing superoxide to H<sub>2</sub>O<sub>2</sub> and molecular oxygen<sup>37</sup>. In addition, APX might affect the fine modulation of ROS in signalling, whereas CAT is predominantly responsible for scavenging excess ROS<sup>19,36</sup>. In this study, under salt stress, increases in the SOD and APX activity levels coincided with a significant reduction in the damage to cell membranes in Se-treated plants compared with non-Se-treated plants (Figs 3 and 4). Although ROS should be further examined, the application of Se to salt-treated plants at a concentration of 1  $\mu$ M induced the antioxidant defence systems to improve plant growth and development.

To further investigate the mechanisms by which Se induces antioxidant defence, the expression of related genes was examined. *ZmMPK5* and *ZmMPK7* and *ZmCPK11* were significantly up-regulated in the roots by 1  $\mu$ M Se application with or without salt stress after 24 h (Fig. 5b). Previous studies have indicated that *ZmMPK5* is activated by H<sub>2</sub>O<sub>2</sub>, which up-regulated the antioxidant defence systems in the leaves of maize plants<sup>38</sup>. Recently, Ding *et al.*<sup>39</sup> found that transient expression of *ZmCPK11* can increase the expression and activity levels of antioxidant enzymes (SOD and APX) in maize. Moreover, lower H<sub>2</sub>O<sub>2</sub> accumulation and clear alleviation of ROS injuries were observed in *ZmMPK7*-overexpressing tobacco plants under osmotic stress<sup>40</sup>. In addition, Shi *et al.*<sup>41</sup> observed that *GhMPK7* is involved in SA-regulated broad-spectrum resistance to pathogen infection, thereby regulating plant growth and development. Taken together, our results show that Se induced the expression of antioxidant defence genes, which in turn led to an increase in the antioxidant defence systems of maize plants under salt stress. However, the involvement of Se in the antioxidant defence genes and how these genes regulate antioxidant defence systems in Se-treated plants under salt stress need to be further analysed in the future.

Plant salt tolerance also depends on the maintenance of K<sup>+</sup> and Na<sup>+</sup> homeostasis<sup>1,2</sup>. Salt stress often causes a significant increase in Na<sup>+</sup> accumulation and a considerable decrease in K<sup>+</sup>, thus markedly decreasing the K<sup>+</sup>/Na<sup>+</sup> ratio<sup>1,18</sup>. A high level of intracellular K<sup>+</sup> is crucial for the activity levels of many cytosolic enzymes, the maintenance of the membrane potential and osmoticum synthesis<sup>1</sup>. In this study, under salt stress, the application of 1 and 5  $\mu$ M Se caused substantial increases in the K<sup>+</sup> content in the shoots compared with non-Se-treated plants. These results are consistent with the findings of Kong *et al.*<sup>27</sup>, which showed that Se application increased K<sup>+</sup> accumulation in salt-stressed sorrel plants. However, Hawrylak-Nowak<sup>18</sup> demonstrated that Se did not significantly affect K<sup>+</sup> accumulation in NaCl-stressed cucumber seedlings. In addition, this study showed that the K<sup>+</sup>/Na<sup>+</sup> ratio was not significantly affected by the application of Se under salt stress. To further understand the effect of Se on ion accumulation in maize plants under salt stress, we analysed the expression of *ZmNHX1*, which



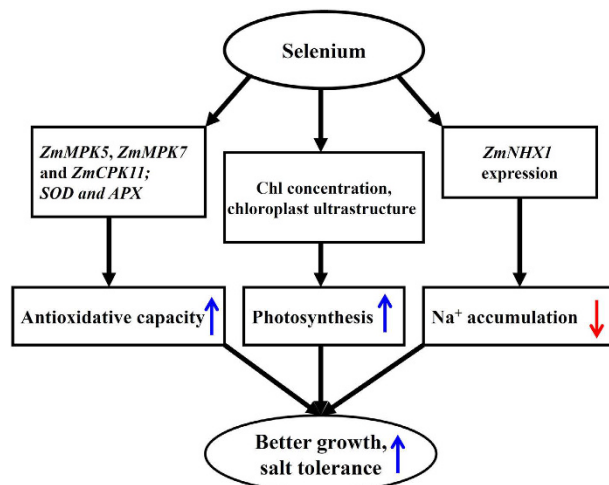
**Figure 7. Effects of exogenous Se on Se content in the shoots and roots of non-stressed or salt-stressed maize plants.** The control plants (CK) were cultured in half-strength Hoagland's solution. Different treatments were added with or without different concentrations of Se or NaCl. The abbreviations 1 Se, 5 Se and 25 Se indicate 1  $\mu\text{M}$   $\text{Na}_2\text{SeO}_3$ , 5  $\mu\text{M}$   $\text{Na}_2\text{SeO}_3$  and 25  $\mu\text{M}$   $\text{Na}_2\text{SeO}_3$ , respectively (details are shown in the Materials and Methods). Data are presented as the means  $\pm$  SDs ( $n = 3$ ). Columns labelled with different letters between treatments represent significant differences ( $p < 0.05$ ).

is involved in  $\text{Na}^+$  compartmentalisation in root vacuoles<sup>42,43</sup>. *ZmNHX1* expression in the roots was up-regulated by Se at 24 h after salinity treatment (Fig. 6). Previous studies proposed that NHX functions in  $\text{Na}^+$  compartmentalisation<sup>1</sup>, and NHX overexpression in transgenic plants, such as tomato<sup>44</sup>, *Brassica napus*<sup>45</sup> and poplar<sup>4</sup>, has been observed to enhance plant salt tolerance. These results suggest that Se up-regulates *ZmNHX1* in the roots, which may participate in  $\text{Na}^+$  compartmentalisation under salt stress. However, how Se regulates  $\text{K}^+$  uptake and accumulation under salt stress is currently unknown, which prevents us from drawing further conclusions on ion homeostasis based on Se application.

In conclusion, the findings from this single experiment require repetition together with measurement of ROS, but nevertheless indicate that the application of low levels of Se (1  $\mu\text{M}$ ) alleviated the inhibitory effect of high salinity via three mechanisms (Fig. 8): (a) the improvement in photosynthetic capacity by the decrease in chlorophyll degradation and the preservation of chloroplast ultrastructure, (b) the activation of the antioxidant defence system to alleviate ROS damage, and (c) the amelioration of ion homeostasis in maize plants under salt stress, particularly  $\text{Na}^+$  compartmentalisation. Thus, this study provides evidence that low Se application can enhance plant salt tolerance, and our results increase the understanding of the precise role of Se in the response of plants to salinity.

## Materials and Methods

**Experimental layout.** Maize seeds (*Zea mays* L. cv. Nongda 108) were surface-sterilised with 0.1% (v/v)  $\text{HgCl}_2$  for 5 min, washed repeatedly with distilled water, and germinated on wet filter paper in glass petri dishes for 2 days. After germination, seedlings were selected, transferred to plastic pots (14.5 cm  $\times$  14.5 cm  $\times$  11 cm, 9 plants per pot) filled with vermiculite and watered with half-strength Hoagland solution. The seedlings were placed in a cultivation chamber (GMC-250, Shanghai Yiheng Technical Co., Ltd., China) under controlled environmental conditions with temperatures of 28  $^\circ\text{C}$  (day) and 22  $^\circ\text{C}$  (night), relative humidity of 65%, and a photoperiod of 14 h/10 h at a photosynthetic photon-flux density of 200  $\mu\text{mol m}^{-2} \text{s}^{-1}$ . After the plants had 2 fully expanded leaves, uniform seedlings were subjected to different treatments by adding NaCl (0 or 100 mM) and Se (0, 1, 5 or 25  $\mu\text{M}$ ) dissolved in half-strength Hoagland solution (Table 5). The concentrations of Se were selected according to the effect of different Se concentrations (0.1, 0.5, 1, 5, and 10  $\mu\text{M}$   $\text{Na}_2\text{SeO}_3$ ) on the growth of maize plants in a preliminary study, which showed that 1  $\mu\text{M}$  Se application significantly promoted shoot growth of maize after 8 days of treatment (data not shown). In this study, selenite ( $\text{Na}_2\text{SeO}_3$ ) was used as the selenium source because it is more efficient than selenate in alleviation of salt stress<sup>46</sup>. The experiment included 8 treatments with 3 replicates (36 plants in total of each treatment). Each replicate included 2 pots of 12 plants (6 uniform plants



**Figure 8. Schematic representation of the positive role of Se on salt tolerance of maize.** In the present study, a model was developed to show that photosynthesis, antioxidant defence systems and  $\text{Na}^+$  accumulation were regulated by Se in maize under salt stress. The blue arrows ( $\uparrow$ ) and the red arrows ( $\downarrow$ ) represent the positive and passive role of Se, respectively.

Abbr.	NaCl (mM)	$\text{Na}_2\text{SeO}_3$ ( $\mu\text{M}$ )
CK	0	0
1Se	0	1
5Se	0	5
25Se	0	25
NaCl	100	0
NaCl + 1Se	100	1
NaCl + 5Se	100	5
NaCl + 25Se	100	25

**Table 5. Plant treatments in this experiment.**

were selected from the 9 plants in each pot). The nutrient solutions containing Se and NaCl were changed every two days. After 15 days of treatments, the plant biomass was determined.

**Plant growth measurements and chemical analyses.** Plant height and leaf length were measured with a ruler at 0, 2, 4, 8, 12 and 15 days after the start of treatment. After 15 days of the treatments, the plants were divided into shoots and roots, and dry weights (DW) were obtained after oven-drying at  $65^\circ\text{C}$  for 24 h or until constant weight. The oven-dried shoots and roots were finely ground and passed through a 1-mm-diameter sieve.  $\text{K}^+$  and  $\text{Na}^+$  contents were determined by flame emission spectrophotometry (FP 640, Shanghai Xinyi Instrument Co., Ltd., China) after the samples were extracted with 1 M  $\text{HNO}_3$  according to the method described by Storey<sup>47</sup>. The  $\text{Cl}^-$  contents were determined according to the method of Jiang *et al.*<sup>48</sup>. The shoots and roots samples were digested by the previously reported method<sup>49</sup>, and the total Se concentration in the solution was analysed using inductively coupled plasma mass spectrometry (X Series ICP-MS (Thermo Electron Corporation, United States). Eighteen plants of each treatment were measured for plant height, leaf length and dry weight. And these eighteen plants divided into 3 uniform groups (6 plants in each group) of each treatment were measured for ion concentrations ( $\text{K}^+$ ,  $\text{Na}^+$ ,  $\text{Cl}^-$  and Se).

**Photosynthetic pigment concentrations and gas exchange measurements.** On day 15 of the salt treatment, the chlorophyll and carotenoid concentrations were determined using an ultraviolet spectrophotometer (UV765, Shanghai Precision and Scientific Instrument Co., Ltd., China). New fully expanded leaf samples were homogenised with 95% (v/v) ethanol containing 2.5 mM sodium phosphate buffer (pH 7.8), followed by centrifugation. The absorbance was measured at 665 and 649 nm for chlorophyll a and chlorophyll b, respectively, using an ultraviolet spectrophotometer (UV765, Shanghai Precision and Scientific Instrument Co., Ltd., China). Chlorophyll and carotenoid concentrations were calculated using the equations of Arnon<sup>50</sup>. The gas exchange of new fully expanded leaves was determined using a portable photosynthesis open system LI-6400XT (Li-Cor Inc., USA) from 9:00 to 12:00, according to the method of Jiang *et al.*<sup>4</sup>. During the measurements, the cuvette temperature was maintained at  $22 \pm 1^\circ\text{C}$  and a relative humidity of  $50 \pm 5\%$ , with a photosynthetic photon flux intensity (PPFD) of  $1000 \mu\text{mol m}^{-2} \text{s}^{-1}$ . Data were recorded after equilibration to a steady state. Twelve plants divided into

Gene name	Forward primer sequence (5' to 3')	Reverse primer sequence (5' to 3')
MPK5	GATTATCAGTAGCCAAAGTTCAA	ACACCGTCACCAGCTTTAATC
MPK7	CCAGTAGCCAAAGTTCGGTTC	TACAGACAACACCGAGAAGTACTTA
CPK11	AGAACGAAATCCAGGCTCTAATG	ATTCGCGACATGCTTGTGAC
ZmNHX1	ATGCAGGGTTCCAAGTGAAG	AATATTGCCCAAGTGCAAG
Actin	GACCTCACCGACCACCTAATG	CTGAACCTTCTGACCCAATG

**Table 6. Sequences of the forward and reverse primers used in qRT-PCR for gene expression analysis in maize plant roots.**

3 uniform groups (4 plants in each group) of each treatment were used for chlorophyll and carotenoid concentrations, and four uniform plants of each treatment were used for gas exchange measurements.

**Transmission electron microscopy.** Leaf segments of newly expanded leaves were cut from uniform treated plants of each treatment with a knife blade and fixed in 2.5% (w/v) glutaraldehyde in 100 mM phosphate buffer (pH 7.2). After washing in 100 mM phosphate buffer, the samples were post-fixed in 2% (w/v) osmium tetroxide, then dehydrated in an acetone series and embedded in epoxy resin. Leaf sections (70 nm) were cut using a Power Tome-XL ultra-microtome and stained with 2% (w/v) uranyl acetate followed by 5% lead citrate. Samples were observed using a transmission electron microscope (TEM) (HT-7700, Hitachi, Japan) at 80 kV.

**Electrolyte leakage and LPO levels measurements.** The electrolyte leakage of newly expanded leaves was determined using a conductivity metre (CT3031, Hangzhou Sinomeasure Automation Technology Co., Ltd., China) according to the method of Zhang *et al.*<sup>14</sup>. LPO of the newly expanded leaves was estimated by measuring the concentration of thiobarbituric acid reactive substances (TBARS), as described by Zhu *et al.*<sup>35</sup>. The lipid peroxides was expressed as nmol TBARS g<sup>-1</sup> FW, using an extinction coefficient of 155 mM<sup>-1</sup> cm<sup>-1</sup>. Twelve plants divided into 3 uniform groups (4 plants in each group) of each treatment were used in electrolyte leakage and LPO levels measurements.

**Extraction and assays of antioxidant enzymes.** Fresh segments (0.5 g) of newly expanded leaves were ground into a fine powder in liquid N<sub>2</sub> with a mortar and pestle. The powder was homogenised in 50 mM phosphate buffer (pH 7.0). The homogenate was centrifuged at 4 °C for 20 min at 15,000 × g, and the supernatant was used for subsequent enzyme assays<sup>51</sup>. SOD activity was determined according to Kong *et al.*<sup>27</sup>. One unit of SOD activity was defined as the amount of enzyme corresponding to 50% inhibition of NBT reduction. CAT activity was determined from the consumption of H<sub>2</sub>O<sub>2</sub> at 240 nm for 3 min<sup>51</sup>. APX activity was determined by assessing the consumption of ascorbate at 240 nm for 60 s<sup>35</sup>. Twelve plants divided into 3 uniform groups (4 plants in each group) of each treatment were measured for antioxidant enzymes activities.

**Total RNA extraction and gene expression analysis.** Total RNA samples were prepared from plant roots of 3 uniform groups (2 plants in each group) in each treatment using TRIzol (Invitrogen Inc., CA, USA) according to the manufacturer's instructions. First-strand cDNA was synthesised from the total RNA (1 µg) by reverse transcription using oligo-dT primers and Superscript II reverse transcriptase (Invitrogen), according to the manufacturer's instructions. Quantitative PCR was performed on a Bio-Rad CFX96 real-time PCR system using SYBR Green master mix (SYBR Premix Ex Taq<sup>TM</sup> II; TaKaRa Bio; <http://www.takara-bio.com>), according to the manufacturer's instructions (TaKaRa Biotechnology). Actin was used as an internal standard for mRNA expression. The primers used for qRT-PCR are shown in Table 6.

**Statistical analysis.** All treatments and measurements were conducted at least in triplicate. Data were analysed using the SPSS 19.0 (SPSS, Inc., Chicago, USA) and are presented as the means ± SDs. Two-way ANOVA was used to assess the effects of NaCl and application rates of Se on maize dry weight, photosynthesis, ion accumulation, antioxidative capacity and related gene expression. Differences among treatments were compared by Fisher's least significance difference (LSD) test at the 5% level.

## References

- Zhu, J. K. Regulation of ion homeostasis under salt stress. *Curr. Opin. Plant Biol.* **6**, 441–445 (2003).
- Munns, R. & Tester, M. Mechanisms of salinity tolerance. *Ann. Rev. Plant Biol.* **59**, 651–681 (2008).
- Chaves, M. M., Flexas, J. & Pinheiro, C. Photosynthesis under drought and salt stress: regulation mechanisms from whole plant to cell. *Ann. Bot.* **103**, 551–560 (2009).
- Jiang, C. *et al.* Overexpression of *Arabidopsis thaliana* Na<sup>+</sup>/H<sup>+</sup> antiporter gene enhanced salt resistance in transgenic poplar (*Populus × euramericana* 'Neva'). *Trees* **26**, 685–694 (2012).
- Jiang, C. *et al.* Melatonin improves antioxidant capacity and ion homeostasis and enhances salt tolerance in maize seedlings. *Acta. Physiol. Plant.* **38**, doi: 10.1007/s11738-016-2101-2 (2016).
- Diao, M. *et al.* Selenium promotes the growth and photosynthesis of tomato seedlings under salt stress by enhancing chloroplast antioxidant defense system. *J. Plant Growth Regul.* **33**, 671–682 (2014).
- Brugnoli, E. & Lauteri, M. Effects of salinity on stomatal conductance, photosynthetic capacity, and carbon isotope discrimination of salt-tolerant (*Gossypium hirsutum* L.) and salt-sensitive (*Phaseolus vulgaris* L.) C<sub>3</sub> non-halophytes. *Plant Physiol.* **95**, 628–635 (1991).
- Yang, X. H. & Lu, C. M. Photosynthesis is improved by exogenous glycinebetaine in salt-stressed maize plants. *Physiol. Plantarum* **124**, 343–352 (2005).
- Shu, S., Yuan, L. Y., Guo, S. R., Sun, J. & Yuan, Y. H. Effects of exogenous spermine on chlorophyll fluorescence, antioxidant system and ultrastructure of chloroplasts in *Cucumis sativus* L. under salt stress. *Plant Physiol. Bioch.* **63**, 209–216 (2013).

10. Zhao, G., Li, S., Sun, X., Wang, Y. & Chang, Z. The role of silicon in physiology of the medicinal plant (*Lonicera japonica* L.) under salt stress. *Sci. Rep.* **5**, 12696, doi: 10.1038/srep12696 (2015).
11. Mittal, S., Kumari, N. & Sharma, V. Differential response of salt stress on *Brassica juncea*: photosynthetic performance, pigment, proline, D1 and antioxidant enzymes. *Plant Physiol. Bioch.* **54**, 17–26 (2012).
12. Babitha, K. C., Vemanna, R. S., Nataraja, K. N. & Udayakumar, M. Overexpression of *EcbHLH57* transcription factor from *Eleusine coracana* L. in tobacco confers tolerance to salt, oxidative and drought stress. *PLoS ONE* **10**(9), e0137098, doi: 10.1371/journal.pone.0137098 (2015).
13. Mittler, R., Vanderauwera, S., Gollery, M. & Van Breusegem, F. Reactive oxygen gene network of plants. *Trends Plant Sci.* **9**, 1360–1385 (2004).
14. Zhang, Y. *et al.* Nitric oxide enhances salt tolerance in maize seedlings through increasing activities of proton-pump,  $\text{Na}^+/\text{H}^+$  antiport in the tonoplast. *Planta* **224**, 545–555 (2006).
15. Shu, S. *et al.* The role of putrescine in the regulation of proteins and fatty acids of thylakoid membranes under salt stress. *Sci. Rep.* **5**, 14390, doi: 10.1038/srep14390 (2015).
16. El-Mashad, A. A. A. & Mohamed, H. I. Brassinolide alleviates salt stress and increases antioxidant activity of cowpea plants (*Vigna sinensis*). *Protoplasma* **249**, 625–635 (2012).
17. Wei, W. *et al.* Melatonin enhances plant growth and abiotic stress tolerance in soybean plants. *J. Exp. Bot.* **66**, 695–707 (2015).
18. Hawrylak-Nowak, B. Beneficial effects of exogenous selenium in cucumber seedlings subjected to salt stress. *Biol. Trace Elem. Res.* **132**, 259–269 (2009).
19. Feng, R., Wei, C. & Tu, S. The roles of selenium in protecting plants against abiotic stresses. *Environ. Exp. Bot.* **87**, 58–68 (2013).
20. Zhu, Y. G., Pilon-Smits, E. A. H., Zhao, F. J., Williams, P. N. & Meharg, A. A. Selenium in higher plants: understanding mechanisms for biofortification and phytoremediation. *Trends Plant Sci.* **14**, 437–442 (2009).
21. Turakainen, M., Hartikainen, H. & Seppänen, M. M. Effects of selenium treatments on potato (*Solanum tuberosum* L.) growth and concentrations of soluble sugars and starch. *J. Agric. Food Chem.* **52**, 5378–5382 (2004).
22. Sun, X., Zhong, Y., Huang, Z. & Yang, Y. Selenium accumulation in unicellular green Alga *Chlorella vulgaris* and its effects on antioxidant enzymes and content of photosynthetic pigments. *PLoS ONE* **9**, e112270, doi: 10.1371/journal.pone.0112270 (2014).
23. Hasanuzzaman, M. & Fujita, M. Selenium pretreatment upregulates the antioxidant defense and methylglyoxal detoxification system and confers enhanced tolerance to drought stress in rapeseed seedlings. *Biol. Trace Elem. Res.* **143**, 1758–1776 (2011).
24. Hasanuzzaman, M., Hossain, M. A. & Fujita, M. Selenium-induced up-regulation of the antioxidant defense and methylglyoxal detoxification system reduces salinity-induced damage in rapeseed seedlings. *Biol. Trace Elem. Res.* **143**, 1704–1721 (2011).
25. Djanaguiraman, M., Prasad, P. V. V. & Seppänen, M. Selenium protects sorghum leaves from oxidative damage under high temperature stress by enhancing antioxidant defense system. *Plant Physiol. Bioch.* **48**, 999–1007 (2010).
26. Kumar, M., Bijo, A. J., Baghel, R. S., Reddy, C. R. K. & Jha, B. Selenium and spermine alleviate cadmium induced toxicity in the red seaweed *Gracilaria dura* by regulating antioxidants system and DNA methylation. *Plant Physiol Bioch.* **51**, 129–138 (2012).
27. Kong, L., Wang, M. & Bi, D. Selenium modulates the activities of antioxidant enzymes, osmotic homeostasis and promotes the growth of sorrel seedlings under salt stress. *Plant Growth Regul.* **45**, 155–163 (2005).
28. Nuss, E. T. & Tanumihardjo, S. A. Maize: a paramount staple crop in the context of global nutrition. *Compr. Rev. Food Sci. F.* **9**, 417–436 (2010).
29. Meng, Q. *et al.* Growing sensitivity of maize to water scarcity under climate change. *Sci. Rep.* **6**, 19605, doi: 10.1038/srep19605 (2016).
30. Farooq, M., Hussain, M., Wakeel, A. & Siddique, K. H. M. Salt stress in maize: effects, resistance mechanisms, and management. A review. *Agron. Sustain. Dev.* **35**, 461–481 (2015).
31. Yamaguchi, T. & Blumwald, E. Developing salt-tolerant crop plants: challenges and opportunities. *Trends Plant Sci.* **10**, 615–620 (2005).
32. Pilon-Smits, E. A. H., Quinn, C. F., Tapken, W., Malagoli, M. & Schiavon, M. Physiological functions of beneficial elements. *Curr. Opin. Plant Biol.* **12**, 267–274 (2009).
33. Lehotai, N. *et al.* Selenite-induced hormonal and signalling mechanisms during root growth of *Arabidopsis thaliana* L. *J. Exp. Bot.* **63**, 5677–5687 (2012).
34. Germ, M., Krefth, I. & Osvaldb, J. Influence of UV-B exclusion and selenium treatment on photochemical efficiency of photosystem II, yield and respiratory potential in pumpkins (*Cucurbita pepo* L.). *Plant Physiol Bioch.* **43**, 445–448 (2005).
35. Zhu, Z., Wei, G., Li, J., Qian, Q. & Yu, J. Silicon alleviates salt stress and increases antioxidant enzymes activity in leaves of salt-stressed cucumber (*Cucumis sativus* L.). *Plant Sci.* **167**, 527–533 (2004).
36. Mittler, R. Oxidative stress, antioxidants and stress tolerance. *Trends Plant Sci.* **7**, 405–410 (2002).
37. Van Raamsdonk, J. M. & Hekimi, S. Superoxide dismutase is dispensable for normal animal lifespan. *P. Natl. Acad. Sci. USA.* **109**, 5785–5790 (2012).
38. Zhang, A. *et al.* ZmMPK5 is required for the NADPH oxidase-mediated self-propagation of apoplastic  $\text{H}_2\text{O}_2$  in brassinosteroid-induced antioxidant defence in leaves of maize. *J. Exp. Bot.* **61**, 4399–4411 (2010).
39. Ding, Y. *et al.* ZmCPK11 is involved in abscisic acid-induced antioxidant defence and functions upstream of ZmMPK5 in abscisic acid signalling in maize. *J. Exp. Bot.* **64**, 871–884 (2013).
40. Zong, X. J. *et al.* Abscisic acid and hydrogen peroxide induce a novel maize group C MAP kinase gene, *ZmMPK7*, which is responsible for the removal of reactive oxygen species. *Planta* **229**, 485–495 (2009).
41. Shi, J., An, H. L., Zhang, L., Gao, Z. & Guo, X. Q. *GhMPK7*, a novel multiple stress-responsive cotton group C MAPK gene, has a role in broad spectrum disease resistance and plant development. *Plant Mol. Biol.* **74**, 1–17 (2010).
42. Apse, M. P., Aharon, G. S., Snedden, W. A. & Blumwald, E. Salt tolerance conferred by overexpression of a vacuolar  $\text{Na}^+/\text{H}^+$  antiport in *Arabidopsis*. *Science* **285**, 1256–1258 (1999).
43. Pitann, B., Mohamed, A., Neubert, A. B. & Schubert, S. Tonoplast  $\text{Na}^+/\text{H}^+$  antiporters of newly developed maize (*Zea mays*) hybrids contribute to salt resistance during the second phase of salt stress. *J. Plant Nutr. Soil Sci.* **176**, 148–156 (2013).
44. Zhang, H. X. & Blumwald, E. Transgenic salt-tolerant tomato plants accumulate salt in foliage but not in fruit. *Nat. Biotechnol.* **19**, 765–768 (2001).
45. Zhang, H. X., Hodson, J. N., Williams, J. P. & Blumwald, E. Engineering salt-tolerant *Brassica* plants: characterization of yield and seed oil quality in transgenic plants with increased vacuolar sodium accumulation. *P. Natl. Acad. Sci. USA* **98**, 12832–12836 (2001).
46. Hawrylak-Nowak, B. Selenite is more efficient than selenate in alleviation of salt stress in lettuce plants. *Acta Biol. Cracov. Series Bot.* **57**, 49–54 (2015).
47. Storey, R. Salt tolerance, ion relations and the effect of root medium on the response of citrus to salinity. *Aust. J. Plant Physiol.* **22**, 101–114 (1995).
48. Jiang, C. *et al.* Distribution of mineral nutrients and active ingredients in *Aloe vera* irrigated with diluted seawater. *Pedosphere* **24**, 722–730 (2014).
49. Jiang, C., Zu, C., Shen, J., Shao, F. & Li, T. Effects of selenium on the growth and photosynthetic characteristics of flue-cured tobacco (*Nicotiana tabacum* L.). *Acta. Soc. Bot. Pol.* **84**, 71–77 (2015).
50. Arnon, D. I. Copper enzymes in isolated chloroplasts Polyphenoloxidase in *Beta vulgaris*. *Plant Physiol.* **24**, 1–15 (1949).
51. Jiang, M. Y. & Zhang, J. H. Water stress-induced abscisic acid accumulation triggers the increased generation of reactive oxygen species and up-regulates the activities of antioxidant enzymes in maize leaves. *J. Exp. Bot.* **53**, 2401–2410 (2002).

## Acknowledgements

The study was financially supported by the National Department Public Benefit Research Foundation of China (201203013), the Discipline Construction Project of Anhui Academy of Agricultural Sciences (17A0921).

## Author Contributions

J.C., C.Z. and Q.Z. designed and performed the study. H.W. and D.L. guided the experimental processes. J.C., D.L., H.W. and J.S. analyzed the data and wrote the paper. D.L., J.C. and Q.Z. revised the manuscript. J.S. contributed to the transmission electron microscope assay.

## Additional Information

**Competing financial interests:** The authors declare no competing financial interests.

**How to cite this article:** Jiang, C. *et al.* Effect of exogenous selenium supply on photosynthesis, Na<sup>+</sup> accumulation and antioxidative capacity of maize (*Zea mays* L.) under salinity stress. *Sci. Rep.* 7, 42039; doi: 10.1038/srep42039 (2017).

**Publisher's note:** Springer Nature remains neutral with regard to jurisdictional claims in published maps and institutional affiliations.



This work is licensed under a Creative Commons Attribution 4.0 International License. The images or other third party material in this article are included in the article's Creative Commons license, unless indicated otherwise in the credit line; if the material is not included under the Creative Commons license, users will need to obtain permission from the license holder to reproduce the material. To view a copy of this license, visit <http://creativecommons.org/licenses/by/4.0/>

© The Author(s) 2017