



# Architectural Ideas Handbook

**MOLIN**

Quality Concrete Solutions  
since 1897

## Contents

Texture Guide Pg. 2

Color Guide Pg. 17

# Architectural Precast Concrete

# TEXTURE GUIDE

**MOLIN**

Quality Concrete Solutions  
since 1897

The versatile nature of concrete allows for a great variety of aesthetically pleasing textures. The selection of aggregate color, size and shape as well as surface finish and depth of exposure will determine the final appearance.

## Architectural Finish Appearance Descriptions

**ACID ETCH (AE)**-Fine sandy texture

**WATER WASH (WW)**-Exposed stones raised above the matrix surface

**SANDBLAST (SB)**-Various aggregate exposures leaving aggregate with a muted or fractured appearance

# Unformed Finish Appearance Descriptions

## **SCREED**

Normal color variations, minor indentations and ridges from troweling, minor chips and spalls are permitted. Imperfections, honeycombing or defects are permitted. Surface deviations of 1/2" or less are acceptable along with surface discoloration.

## **FLOAT**

Normal color variations, minor indentations and ridges from troweling, minor chips and spalls are permitted. No major imperfections, honeycombing or defects are permitted. Surface deviations of 1/4" or less are acceptable along with surface discoloration.

## **BROOM**

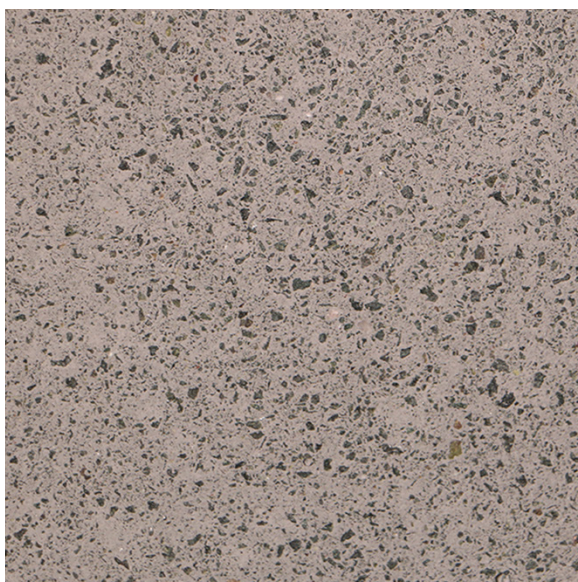
Normal color variations, minor indentations and ridges from troweling, minor chips and spalls are permitted. No major imperfections, honeycombing or defects are permitted. Surface deviations of 1/8" or less are acceptable along with surface discoloration.

## **STEEL TROWEL**

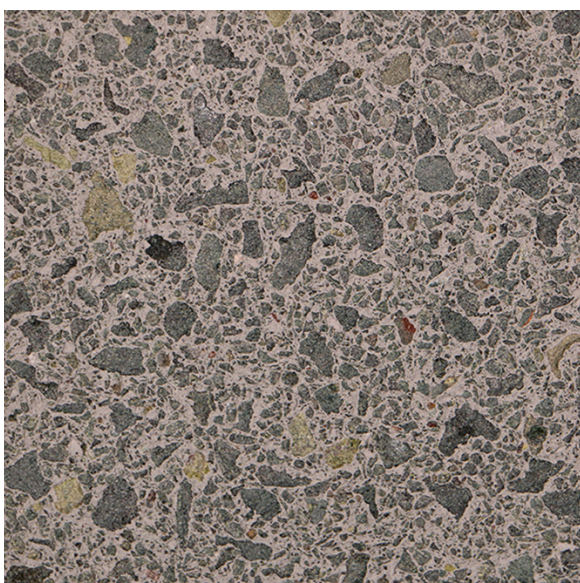
Normal color variations, minor indentations and ridges from troweling, minor chips and spalls are permitted. No major imperfections, honeycombing or defects are permitted. Surface deviations of 1/8" or less are acceptable along with surface discoloration.

## **BURNISHED**

Normal color variations, minor indentations and ridges from troweling are permitted. No minor chips or spalls, honeycombing or defects are permitted. Surface deviations of 1/16" or less are acceptable along with surface discoloration.



Slate-W-AE

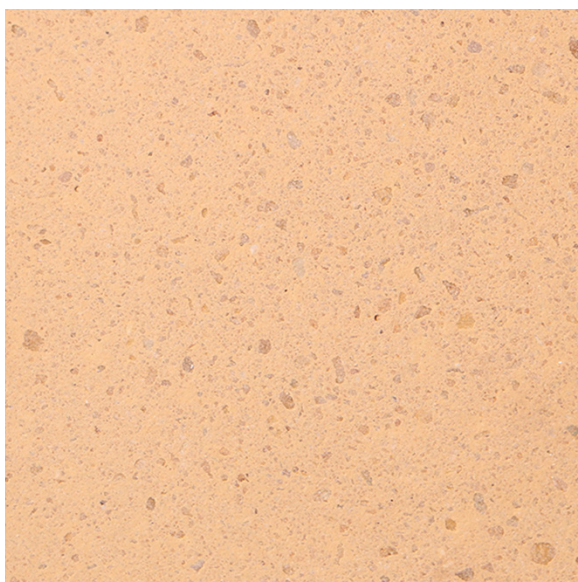


Slate-W-SB

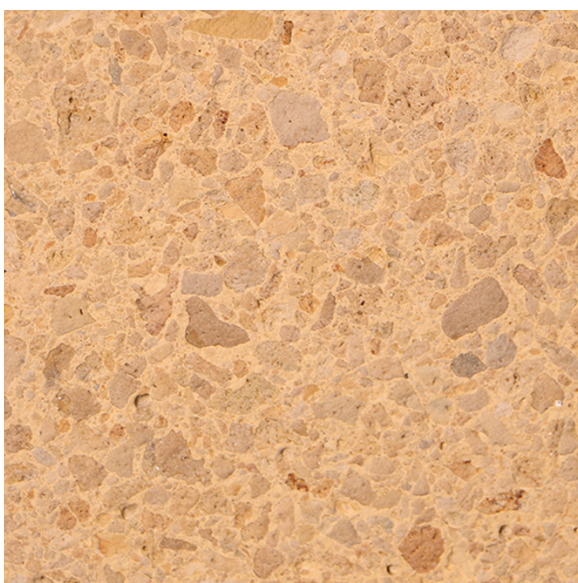


Slate-W-WW





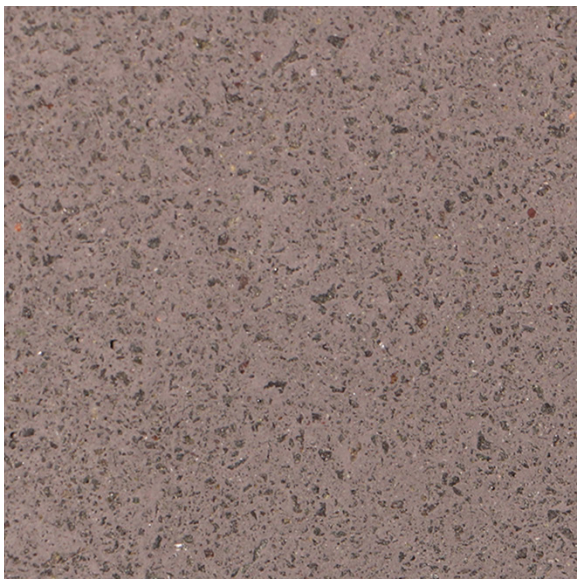
Almond-W-AE



Almond-W-SB



Almond-W-WW



Storm-W-AE



Storm-W-SB

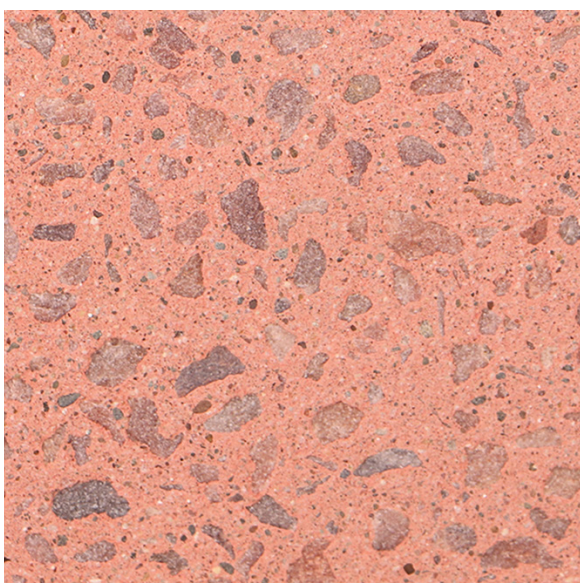


Storm-W-WW





Salmon-W-AE



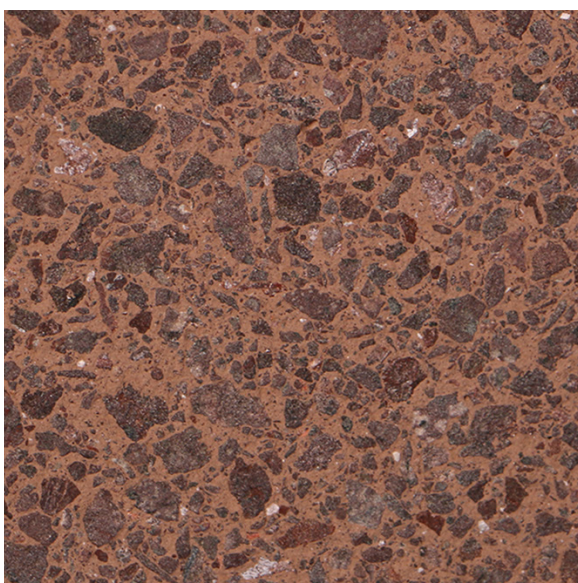
Salmon-W-SB



Salmon-W-WW



Coffee-W-AE



Coffee-W-SB



Coffee-W-WW





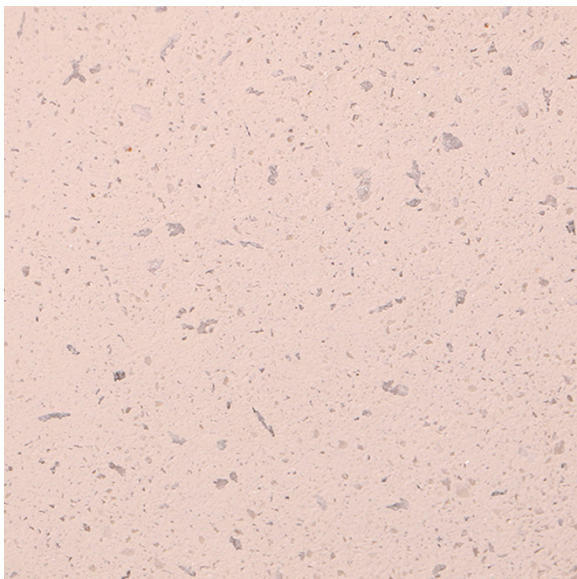
Plum-W-AE



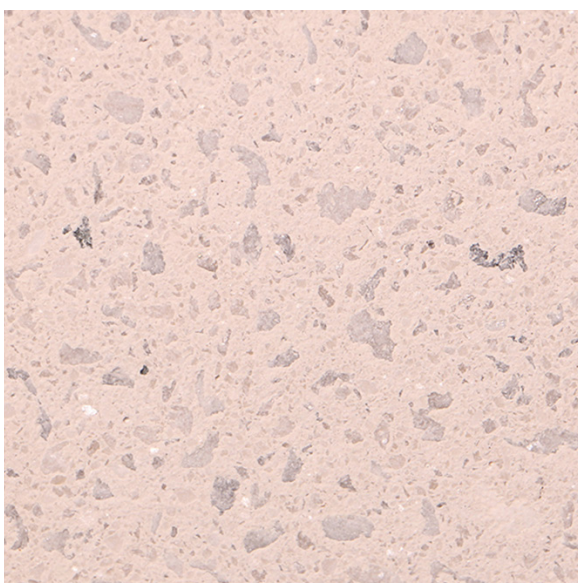
Plum-W-SB



Plum-W-WW



Pearl-W-AE



Pearl-W-SB



Pearl-W-WW





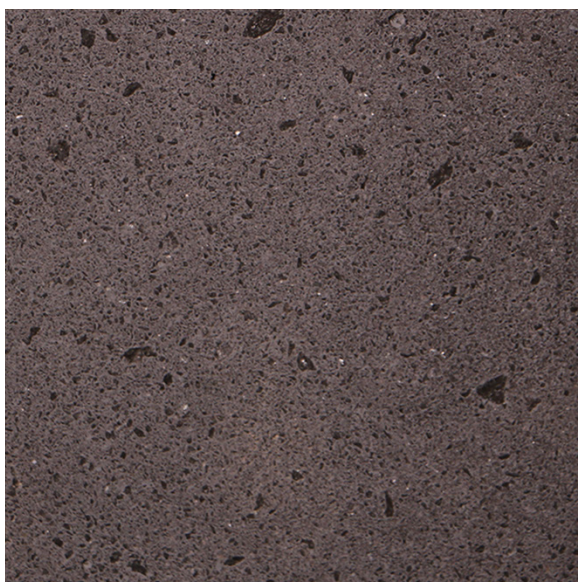
Copper-W-AE



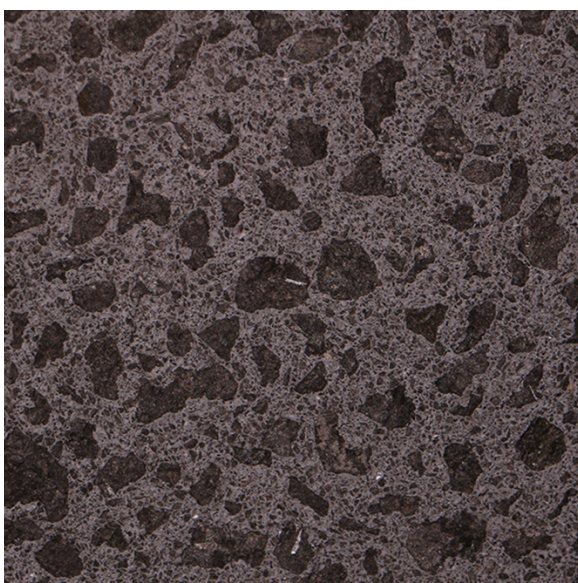
Copper-W-SB



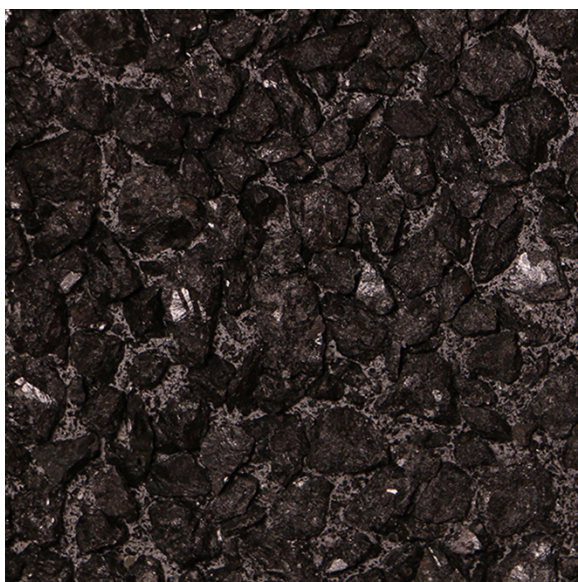
Copper-W-WW



Charcoal-W-AE



Charcoal-W-SB

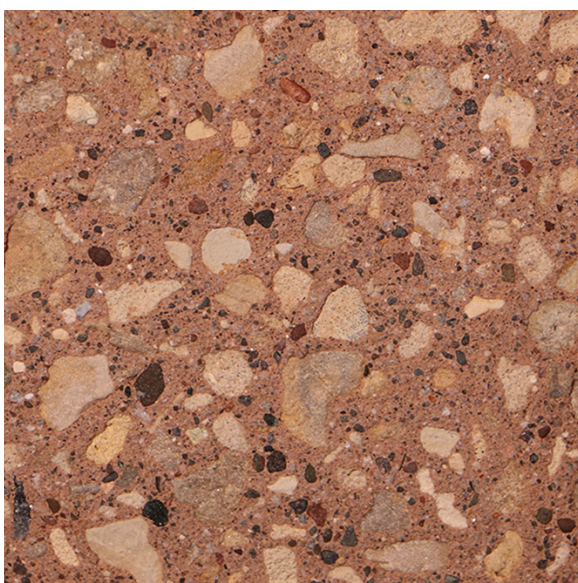


Charcoal-W-WW





Leather-W-AE



Leather-W-SB

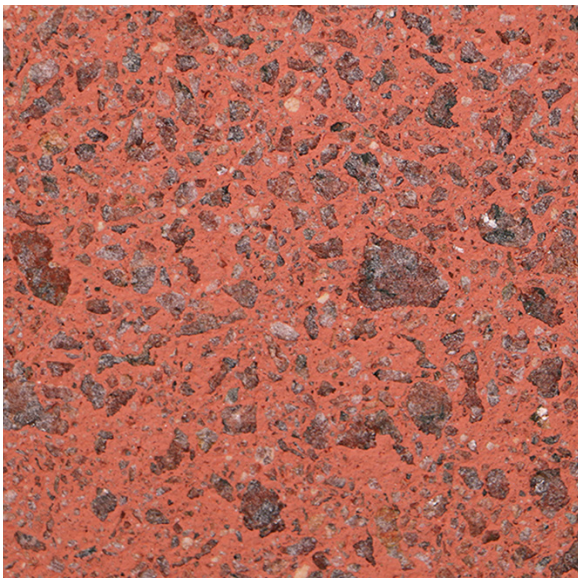


Leather-W-WW





Cinnamon-W-AE



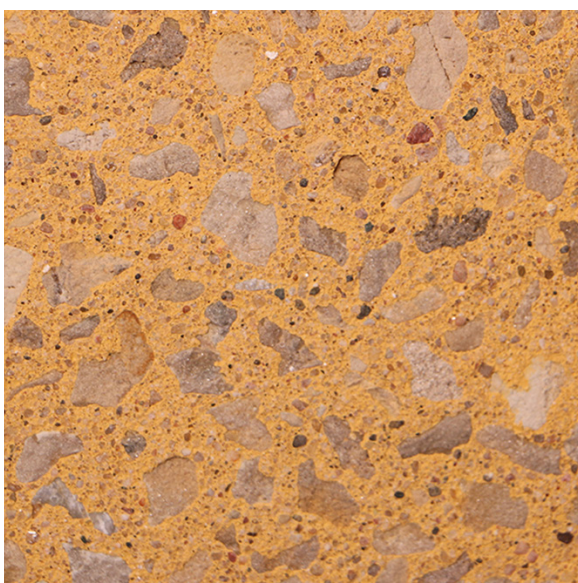
Cinnamon-W-SB



Cinnamon-W-WW



Granola-W-AE



Granola-W-SB



Granola-W-WW





Molin Concrete Product has the capability of using various combinations of aggregate & sands, finishing techniques, cast-in patterns and casting in thin products like brick or stone. Please contact your Molin representative for additional information or to request samples.





# Architectural Precast Concrete

# COLOR GUIDE

The logo for Molin, featuring the word "MOLIN" in white, bold, uppercase letters inside a red oval shape.

**MOLIN**

Quality Concrete Solutions  
since 1897

Matrix color selections are determined by the color of cement, pigments and aggregates. Molin Concrete Products uses white or gray Portland cement or a blend of both to achieve the designers desired appearance. Pigments and aggregates are available in a wide range of colors. This Color Guide is intended to show variations of specific pigment selection shown with variations of cement color.







Slate-W



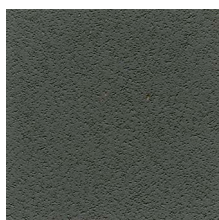
Slate-B



Slate-G



Storm-W



Storm-B



Storm-G



Charcoal-W



Charcoal-B



Charcoal-G



Sand-W



Sand-B



Sand-G



Copper-W



Copper-B



Copper-G



Harvest-W



Harvest-B



Harvest-G



Smoke-W



Smoke-B



Smoke-G



Leather-W



Leather-B



Leather-G



Walnut-W



Walnut-B



Walnut-G



Shadow-W



Shadow-B



Shadow-G



Amber-W



Amber-B



Amber-G



Plum-W



Plum-B



Plum-G





Salmon-W



Salmon-B



Salmon-G



Cinnamon-W



Cinnamon-B



Cinnamon-G



Blaze-W



Blaze-B



Blaze-G



Almond-W



Almond-B



Almond-G



Granola-W



Granola-B



Granola-G



Mustard-W



Mustard-B



Mustard-G



Ivory-W



Ivory-B



Ivory-G



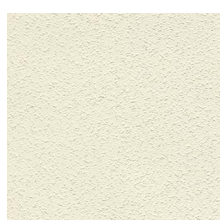
Bronze-W



Bronze-B



Bronze-G



Pearl-W



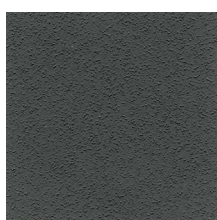
Antique-W



Cream-W



Onyx-W\*



Onyx-B\*



Onyx-G\*



Coffee-W\*



Coffee-B\*



Coffee-G\*



Garnet-W\*



Garnet-B\*



Garnet-G\*

\*Premium mix design





**CUTTING-EDGE**

# **STATE-OF THE-ART**

**COMMITMENT  
CONSISTENCY**

# **AUTOMATION**

**STRATEGIC PLANNING**





**MOLIN**

**Quality Concrete Solutions  
since 1897**

DESIGNERS | MANUFACTURERS | INSTALLERS  
STRUCTURAL & ARCHITECTURAL  
PRECAST/PRESTRESSED CONCRETE

**651.786.7722 | 800.336.6546**

**[www.MOLIN.com](http://www.MOLIN.com)**

**CORPORATE OFFICE**

**415 Lilac Street, Lino Lakes, MN 55014**

**AUTOMATED WALL PANEL PLANT**

**6820 143rd Avenue, Ramsey, MN 55303**