

EVERCURE EM22 WATER BASED DAMP CURING AGENT



PRODUCT OVERVIEW

- Cementitious powder blend of various cements and binding agents
- Excellent adhesion as primer on most surfaces
- Mainly used as damp curing agent
- Bonding agent onto substrates with difficult adhesion characteristics
- Prime-coat for waterproofing raw masonry surfaces

USES

- A primer used to protect and seal new concrete, plastered cement and asbestos/fibre cement prior to painting and waterproofing.
- Ideal for sealing reservoirs, dams and fishponds



EVERCURE DAMP STOP

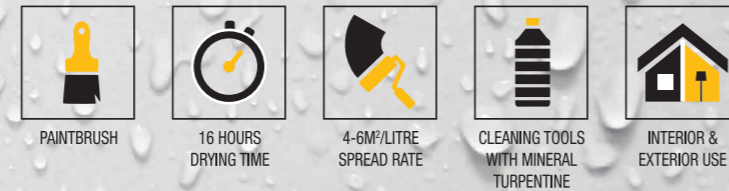


PRODUCT OVERVIEW

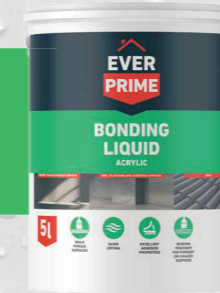
- Seals and protects all interior and exterior surfaces against rising damp
- Protects the subsequent coats of paint applied to the surface while preventing further deterioration of the substrate
- Excellent adhesion and Alkali-Resistant properties

USES

- Interior and exterior walls made from cement plaster, concrete and masonry surfaces
- Walls plastered below the damp proof course



EVERPRIME BONDING LIQUID

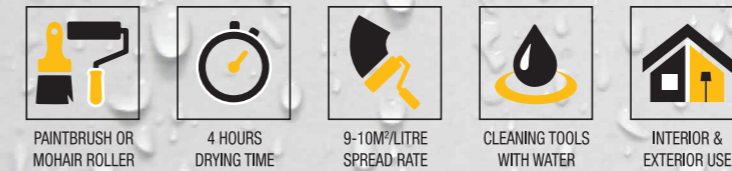


PRODUCT OVERVIEW

- High quality, quick drying water based system
- A sound surface for top coats
- Excellent penetrating properties for adhesion to porous surfaces

USES

- A primer used for new concrete, plaster and asbestos surfaces prior to painting or waterproofing
- Suitable for roofs and walls



THE SEALING SPECIALISTS.



Proudly manufactured by Medal Paints



CUSTOMER CARE:

0860 063 325

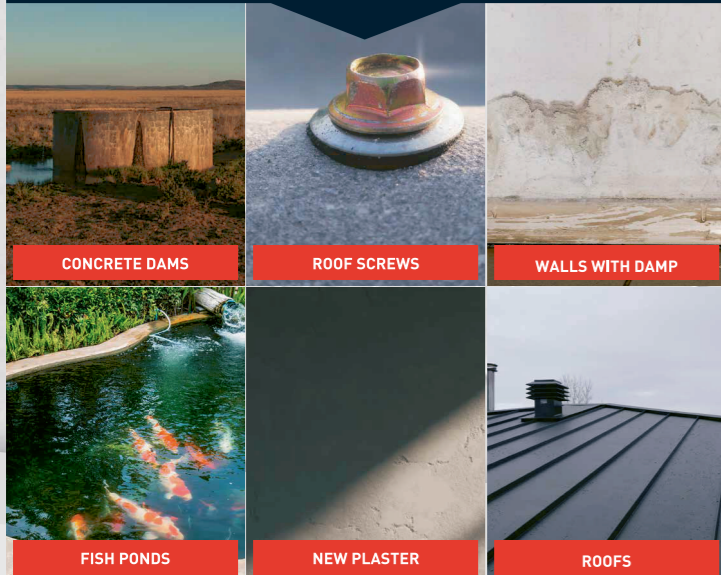
WWW.MEDALPAINTS.CO.ZA
MEDALPAINTSSA

Printed colours may vary from actual paint colour.



A complete range of waterproofing products, providing solutions for both commercial and domestic use

- EVER BOND**
WATERPROOFING SEALANT
FIBRE REINFORCED MEMBRANE FREE
- EVER SEAL**
FLEXIBLE WATERPROOFING MEMBRANE SYSTEM
- EVER CURE**
DAMP STOP
- EVER CURE**
EM22
WATER BASED DAMP CURING AGENT
- EVER PRIME**
BONDING LIQUID
- EVER FLEX**
LIQUID RUBBER COATING



NEW **EVER FLEX**
LIQUID RUBBER COATING

EVERFLEX LIQUID RUBBER COATING

QUALITY 12 YEAR GUARANTEE

500% elongation and 95% recovery

PRODUCT OVERVIEW

- Designed for roofs and cold rooms where a high degree of water resistance, elongation and elasticity is required
- UV resistant
- Excellent flexibility, stretch and recovery
- Improved alkali resistance
- Improves lifespan of coated surfaces
- Dirt pick-up resistance

USES

- Ideal for Roof tiles, facades and parapets as well as flashings, roof bolts, laps and joints.
- Use on primed metal and galvanised iron
- Cold Rooms

- PAINTBRUSH OR LAMBSWOOL/ FURPILE ROLLER
- 4 HOURS DRYING TIME
- 3-4M²/LITRE SPREAD RATE
- CLEANING TOOLS WITH WATER
- INTERIOR & EXTERIOR USE



EVER BOND
WATERPROOFING SEALANT

EVERBOND WATERPROOFING SEALANT

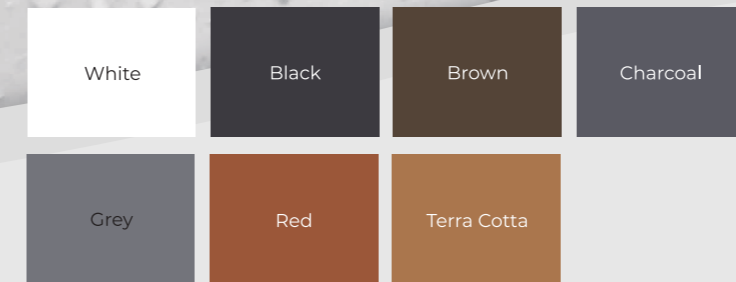
PRODUCT OVERVIEW

- Non-toxic, fibre reinforced flexible acrylic waterproofing system
- Excellent elongation properties
- Extremely high UV resistance
- Can be submerged under water for long periods of time
- Membrane-free system

USES

- Interior and exterior walls made from plastered cement, concrete and masonry surfaces
- Seals hairline cracks
- Waterproofing roofs, walls and parapet walls
- Protects steel against corrosion and salt mist

- PAINTBRUSH OR LAMBSWOOL/ FURPILE ROLLER
- 4 HOURS DRYING TIME
- 1M²/LITRE SPREAD RATE
- CLEANING TOOLS WITH WATER
- INTERIOR & EXTERIOR USE



EVER SEAL
FLEXIBLE WATERPROOFING

EVERSEAL FLEXIBLE WATERPROOFING

PRODUCT OVERVIEW

- High quality acrylic waterproofing used in conjunction with a membrane
- Highly flexible with excellent elongation
- Excellent UV resistant properties for protection of exterior surfaces
- Non-Toxic Waterbased system

USES

- Ideal for waterproofing galvanised iron and tiled roofs, walls and parapet walls
- Flashings, roof valleys, overlapping roof sheets, roof screws and weather walls

- PAINTBRUSH
- 4 HOURS DRYING TIME
- 4M²/LITRE SPREAD RATE
- CLEANING TOOLS WITH WATER
- INTERIOR & EXTERIOR USE

