

Figure S1: Rarefaction curves of the full and filtered datasets showing the number of amplicon sequence variants (ASVs) found in each sample during seaweed vermicomposting.

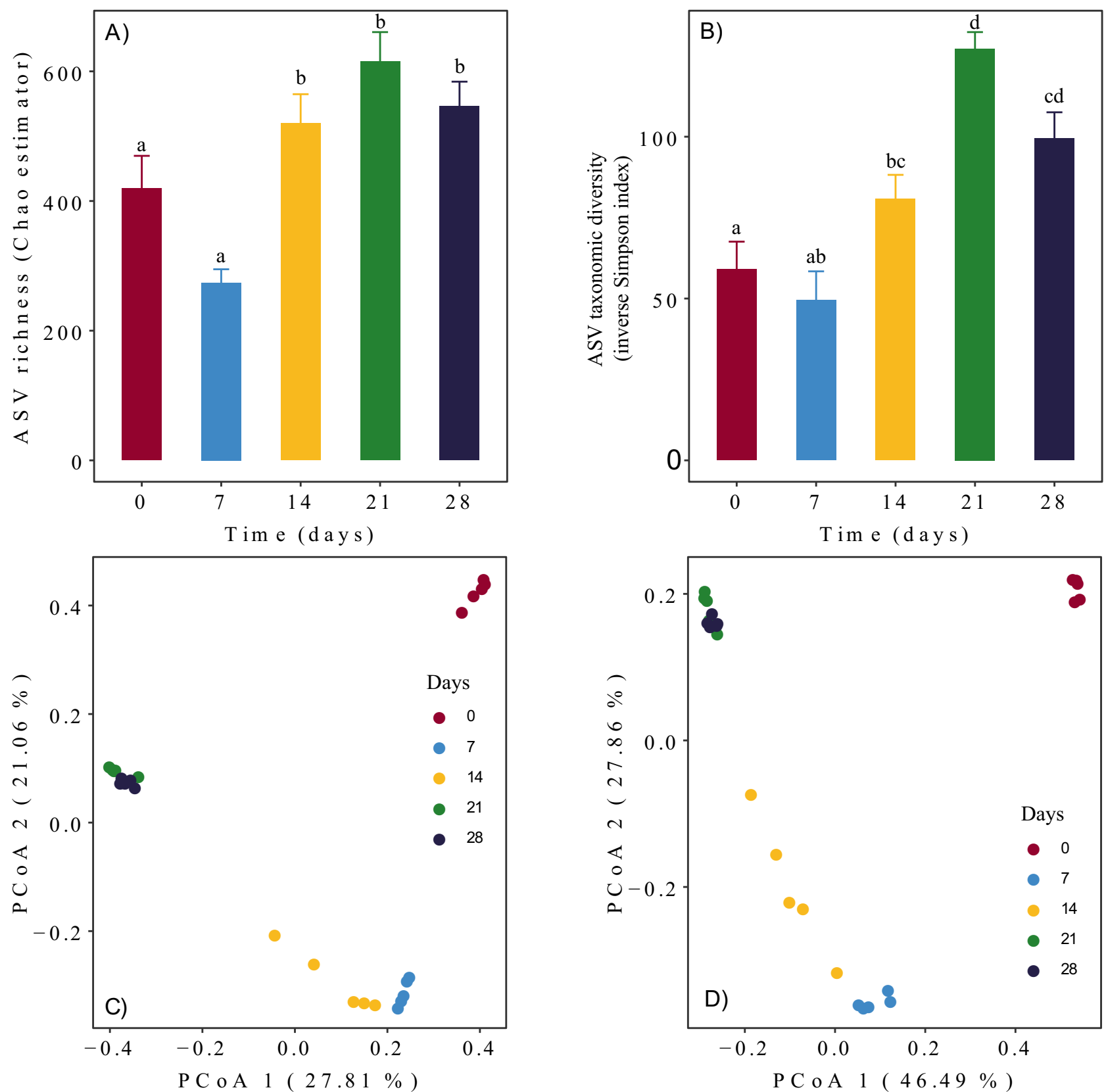


Figure S2: Changes in bacterial alpha-diversity during seaweed vermicomposting, expressed as (A) taxonomic richness (Chao estimator) and (B) taxonomic diversity (inverse Simpson index). Different letters indicate significant differences between time points (paired t-test, FDR corrected). Changes in bacterial taxonomic and phylogenetic beta-diversity during seaweed vermicomposting were revealed by principal coordinate analysis of Jaccard (C) and unweighted UniFrac (D) distances, respectively