

Lenovo 10e Chromebook Tablet



VERSATILE FUNCTIONALITY

As the only Chrome tablet to offer an optional folio keyboard that connects seamlessly via pogo pins and magnets, the Lenovo 10e Chromebook Tablet quickly takes users from interacting with customers, clients, or patients to managing accounts and writing reports.



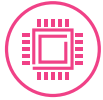
EXTREME PORTABILITY

Weighing in at just over one pound, the Lenovo 10e Chromebook Tablet is lighter—as well as more affordable—than most of the competitors, while still boasting the largest display and slimmest profile in the category.



LASTING POWER

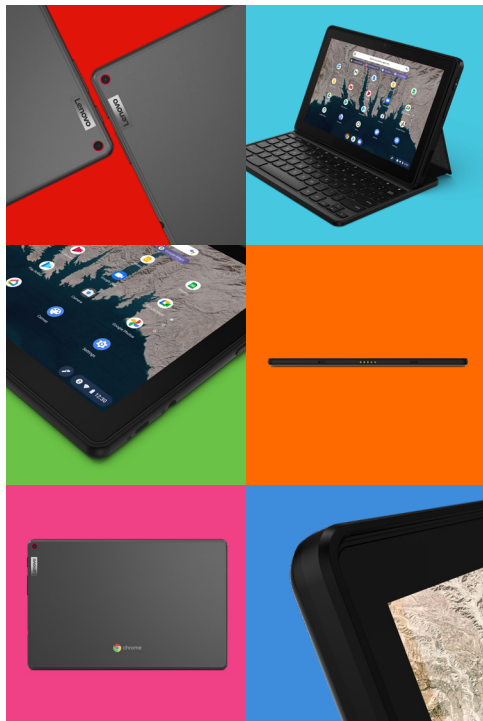
It's MediaTek 8183 processor is optimized for use in tablets, making the Lenovo 10e Chromebook Tablet powerful enough for running numerous apps, recording video, and walking through presentations, all with up to 16.5 hours* of battery life.



AFFORDABLE PERFORMANCE

Empowering your team with the Lenovo 10e Chromebook Tablet allows them to move through the day with high-performing power at their fingertips. And because this device doesn't sacrifice quality for cost, it's a great choice to benefit any company's bottom line.

*Based on Google Chrome Power Load Test, a battery run down test. Test results should be used only to compare one product with another and are not a guarantee you will experience the same battery life. Battery life may be significantly less than the test results and varies depending on your product's configuration, software, usage, operating conditions, power management settings and other factors. Maximum battery life will decrease with time and use. For more information about Google Chrome Power Load Test, visit www.chromium.org.



Durability

This tablet is ready for whatever the work-from-everywhere day brings, with 360-degree TPU rubber bumpers, a scratch-resistant and super tough Dragontrail™ Pro display, and an optional protective case for added durability.

Adaptability

As your workforce moves from interacting with customers, clients, or patients to content creation and catching up on emails, they can transform this tablet into a laptop-like workhorse with the folio keyboard accessory.

Affordability

Priced competitively with other entry-level tablets in its class, the Lenovo 10e Chromebook Tablet also integrates seamlessly with your existing IT ecosystem through Chrome management console.

Lenovo 10e Chromebook Tablet

Services

Lenovo offers a comprehensive portfolio of end-to-end services to support and protect your investment—so you can focus on the job at hand, not IT.



PREMIER SUPPORT

As IT budgets contract, you need to reduce complexity, decrease operational costs, and find ways to increase efficiency from your in-house IT support teams. Lenovo™ Premier Support manages routine support tasks, freeing IT focus on strategic efforts that move the organization forward. Boost end-user productivity and limit downtime with direct access to elite Lenovo engineers who provide unscripted, advanced hardware and software support.



ASSET TAGGING

Collaborate with Lenovo's Configuration Services team to lay the foundation for a strong asset management program. Our asset tagging services allow you to streamline deployment, saving you time and reducing the risk of loss or theft of valuable technology assets. Your PCs are protected from day one and will be easily identifiable and trackable right out of the box. Our flexible asset tagging options meet the exact needs of your organization.



WARRANTY EXTENSION

Realize your objectives for cost efficiency, improved service levels, and end-user satisfaction with warranty extensions. Lenovo's flexible warranty options are designed to fit various needs. We recommend you match service coverage duration with the expected lifecycle of your PC. Minimize unplanned break/fix expenses and enjoy consistent service levels for multinational organizations, with in-region and local-language support.

Accessories

Lenovo 10e Chromebook Tablet Keyboard Folio

This thin, yet durable folio keyboard connects instantly using pogo pins, allowing for faster and more seamless connectivity than keyboards that pair via Bluetooth*. Additional magnets keep it sturdily in place yet allow for quick and easy disconnection without any ports or wires being damaged.



MAXcases Guardian Case

Designed for the Lenovo 10e Chromebook Tablet, this stylish folio case offers overhang edge and corner protection, a built-in stand for ergonomic viewing and typing, and smart on/off cover functionality to save battery life. The precise design enables easy access to all device functions, including the camera, microphone, speakers, and charging ports.



Lenovo 10e Chromebook Tablet

performance

PROCESSOR

MediaTek MT8183

OPERATING SYSTEM

Chrome OSTM

GRAPHICS

Integrated

CAMERA

2MP front, 5MP world-facing camera

MEMORY

4GB LPDDR4

STORAGE

Up to 64GB eMMC

BATTERY

Up to 16.5 hours* (31.5Whr)

AUDIO

Stereo connectivity

INPUT/OUTPUT PORTS

1x USB-C

1x 3.5 mm audio and microphone combo jack

WIFI

WLAN 802.11 AC (2 x 2)

Bluetooth® 4.2

design

DISPLAY

10.1" FHD IPS Touch (1920 x 1200, 400 nit) with Dragontrail™ Pro Glass

DIMENSIONS (W X D X H)

249.5 x 163.6 x 9.45 mm / 9.8 x 6.44 x 0.37 inches

WEIGHT

0.5 kg/1.14 lbs (0.997 kg/2.2 lbs with keyboard)

PEN

External Pen

KEYBOARD

Optional water-resistant (up to 330 ml) keyboard and touchpad with mechanically anchored keys

MIL-STD-810G

Yes

COLORS

Black

*Based on Google Chrome Power Load Test, a battery run down test. Test results should be used only to compare one product with another and are not a guarantee you will experience the same battery life. Battery life may be significantly less than the test results and varies depending on your product's configuration, software, usage, operating conditions, power management settings and other factors. Maximum battery life will decrease with time and use. For more information about Google Chrome Power Load Test, visit www.chromium.org.

