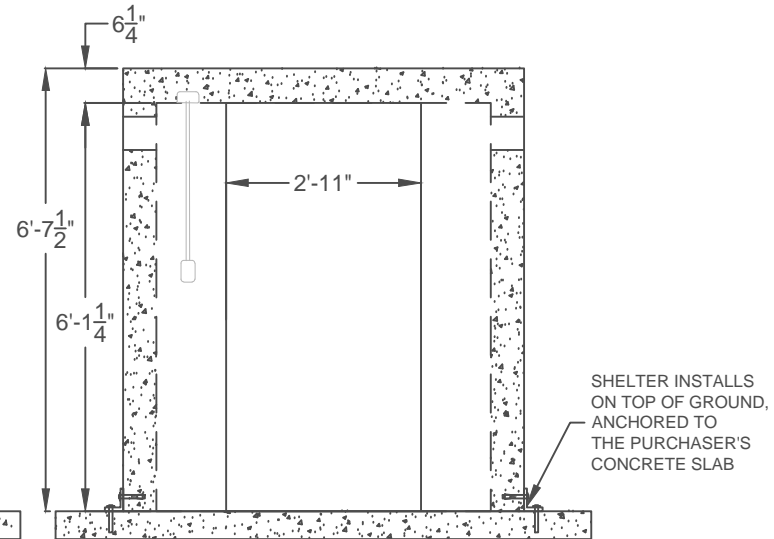
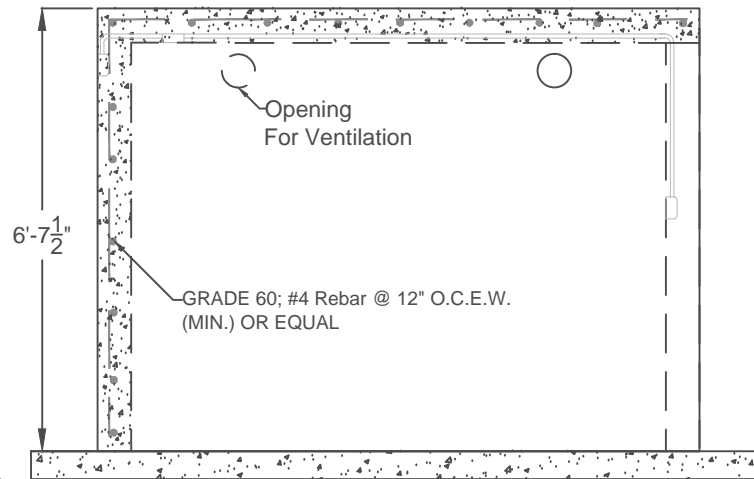


STORM SHELTER PROVIDED WITH:

STEEL DOOR PASSED IMPACT TEST AT TEXAS TECH WIND & SCIENCE (NOT SHOWN)

STEEL DEFLECTORS PLATES OVER 6" OPENINGS FOR VENTS (NOT SHOWN)



DESIGN DATA
 CONFORMS TO ICC-500 (2020) AND FEMA P320 (2021) GUIDELINES FOR STRUCTURAL STABILITY, AND CAPACITY FOR RESIDENTIAL TORNADO SHELTERS
 OCCUPANCY: 8 PERSONS
 GROSS WEIGHT: 16,500 LBS

**5 X 8
 GARAGE MODEL
 SHELTER**

DATE:

4-29-22

DRAWN BY:

ALLEN LEE

