



Rear I/O

Features

- Compact fanless system with for IBASE MB300 customized board
- 7th/6th Gen Intel® Core™ i7/i5/i3 Processors (35W TDP)
- 2MB MRAM module (optional)
- Front removable drive bay for HDD/SSD (supports RAID 0/1)
- 1x PCI-E (x8) + 1x PCI-E (x4) expansion slot
- Over/Under/Reverse voltage protection
- Supports DIN-rail mount & wall mount
- iSMART, iAMT (11.6)

Specifications

| | |
|--------------------------|---|
| System Mainboard | MB300 with Intel® Q170 PCH |
| CPU Type | 7th/6th Gen Intel® Core™ i7/i5/i3 desktop processors (35W TDP) |
| System Speed | Up to 3.4GHz |
| Memory | 2x DDR4-2133 SO-DIMM, Max. 32GB |
| Front Panel External I/O | 2x Antenna hole for WLAN module |
| Rear Panel External I/O | 1x DVI-I + 1x DisplayPort connector 1x Audio jack for Line-out 4x USB 3.0 ports, 2x USB 2.0 ports 1x Red HDD LED, 1x green power LED 2x Error LED by programming 1x Power button 1x 2-pin terminal block for external power button 1x RS232/422/485 port for COM#1 1x RS232 port for COM#2 2x RJ45 Gigabit Ethernet port 1x 3-pin DC-in terminal block for 24V (±10%) |
| Expansion Slots | 1x Mini PCI-E sockets (full-size) 1x PCI-E (x8) slot 1x PCI-E (x4) slot |
| Storage | 2x 2.5" HDD/SSD (1x internal & 1x external-accessible) + 1x mSATA socket |
| Construction | Aluminum & steel |
| Chassis Color | Silver & Gray |
| Mounting | Desktop or wall mounting (wall mount kit included) Side mounting DIN-rail mounting (optional) |
| Dimensions | 275mm (W) x 140mm (D) x 117mm (H) 10.83" (W) x 5.51" (D) x 4.61" (H) |
| Weight | 3.3kg |
| Operating Temperature | -10°C to 60°C (14°F~140°F) *with air flow -10°C to 50°C (14°F to 122°F) without air flow |
| Storage Temperature | -20°C to 80°C (-4°F to 176°F) |
| Relative Humidity | 5~90% @ 45°C, (non-condensing) |
| Vibration | Non-Operating: 1.0 grms / 5~500Hz / random operation Operating: 0.25 grms / 5~500Hz / random operation |
| Shock | Operating: 20 g / 11 ms Non-operating: 40 g / 11 ms |
| Certification | CE / LVD / FCC Class-B |

Ordering Information

| | |
|--------------------------------|---|
| AMS302 | Fanless System with MB300, w/ Intel® Core™ i7/i5/i3 desktop Processor, 2x COM, 2x 4GB memory, 1x 2.5" 64GB MLC industrial-grade SSD, 1x PCI-E (x8) + 1x PCI-E (x4) expansion slots, w/o power adaptor |
| 180W power adaptor (optional) | 180W (24V @7.5A) power adaptor, bare wire type Compatible with IEC62368-1/EN62368-1 |
| 2nd storage ACC Kit (optional) | Storage ACC Kit including screws and cable (SC2AMS300--A10100R) |
| Optional Accessories | WiFi/BT antenna kit 4G/LTE antenna kit (Must have M2MU2-S) GPS antenna kit (Must have M2MU2-S) |

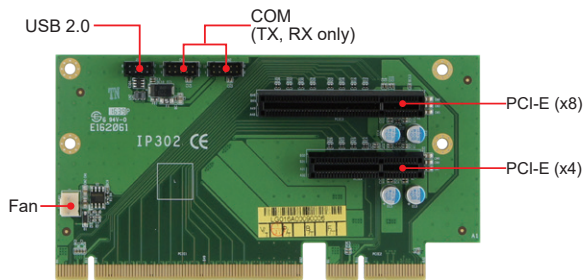
Recommended Processor List

| Model | TDP | Base Freq | Turbo Freq | Cache | Cores / Threads |
|-----------|-----|-----------|------------|-------|-----------------|
| i7-7700T | 35W | 2.9 GHz | 3.8 GHz | 8M | 4/8 |
| i7-6700TE | 35W | 2.4 GHz | 3.4 GHz | 8M | 4/8 |
| i5-7500T | 35W | 2.7 GHz | 3.3 GHz | 6M | 4/4 |
| i5-6500TE | 35W | 2.3 GHz | 3.3 GHz | 6M | 4/4 |
| i3-7101TE | 35W | 3.4 GHz | N/A | 3M | 2/4 |
| i3-6100TE | 35W | 2.7 GHz | N/A | 4M | 2/4 |
| G4400TE | 35W | 2.9 GHz | N/A | 3M | 2/2 |
| G3900TE | 35W | 2.6 GHz | N/A | 2M | 2/2 |



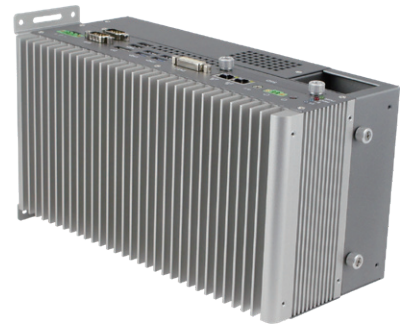
Expansion Cards

IP302



Flexible Mounting

Side Mounting



DIN-rail Mounting



Dimensions and Drawing

