



Rear I/O

Specifications

System Mainboard	MBE240AF with Intel Q670E PCH (Non-ECC memory) MBE240AF-R with Intel® R680E PCH (supports ECC memory)
CPU Type	14th/13th Intel® Core™ i9/i7/i5/i3 desktop processors (35W TDP)
System Speed	Up to 5.0GHz
Memory	2x DDR5-5600 SO-DIMM, Max. 64GB
Front Panel External I/O	2x RS232/422/485 ports for COM#1~COM#2 2x RS232 ports for COM#3~COM#4 2x RS232 ports for COM#5~COM#6 (from IP218) 2x DisplayPort 2x RJ-45 GbE ports (supports 802.3at PoE+) 1x 5-pin DC-in terminal block type for +24V 2x Antenna holes 2x USB 2.0 from IP218 2x expansion slots
Rear Panel External I/O	2x HDMI 8x USB 3.2 ports 2x Antenna holes 2x RJ-45 2.5G ports 1x Red HDD/SSD LED 1x Power button with green LED indicator 1x 2-pin terminal block for On/Off 2x SIM card slots
Expansion Slots	1x PCI-E (16x) expansion slot for Gen.5 device 1x M.2 B-Key 3052 (LTE/5G/4G) 1x M.2 E-Key 2230 (WIFI/BT) 1x M.2 M-Key 2280 (NVMe / SATA SSD)
Storage	2x 2.5" storage
Construction	Aluminum @ Gray
Chassis Color	Silver & Gray
Mounting	Desktop & wall mount
Dimensions	210mm(W)0 x 285mm(D) x 129mm(H)
Weight	4.9 kg
Operating Temperature	-20 °C ~ +70 °C (-4°F ~ 158°F) [with 35W CPU and DDR5 memory]
Storage Temperature	-20°C ~ +80°C (-4°F ~ 176°F)
Relative Humidity	5%~90%@45°C (non-condensing)
Vibration	Operating: 3.0 Grms / 5~500Hz
Shock	Operating: 20G/11 ms Duration
Certification	CE *follow EN55032* FCC Class-A / LVD

Features

- Fanless system with IBASE MBE240 proprietary board
- 14th/13th Gen Intel® Core™ desktop processors
- Supports DDR5-5600 memory, up to 64GB Max. (ECC is optional)
- 2x Intel® 2.5G LAN, 2x Intel® GbE (Support 802.3 at PoE+), 3x M.2 sockets (M-Key/B-Key/E-Key)
- Supports PCI Express Generation 5 for 1x PCI-E(16x) expansion slot
- Supports Over/Under/Reverse voltage protection
- Dual SIM slots support WWAN redundancy, iAMT (16.1), TPM (2.0)
- 2x 2.5" Storage (supports RAID 0/1)

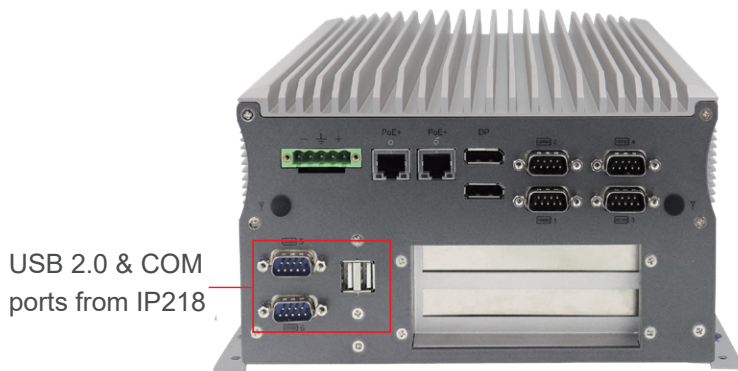
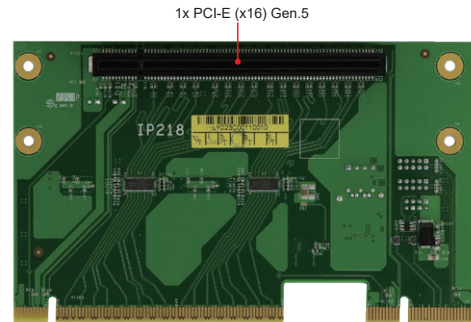
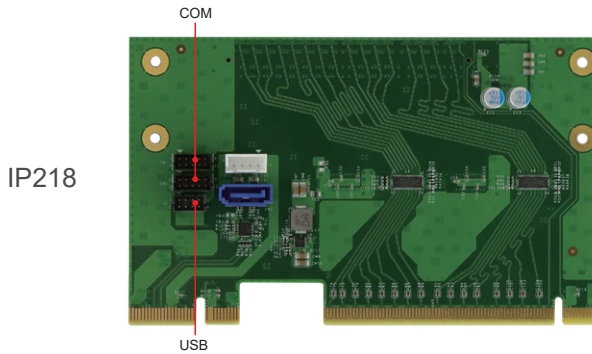
Ordering Information

AMI242AFM	(AMI) Aluminum Chassis with MBE240 (Q670E PCH), fanless design w/o CPU/memory/SSD/power adaptor, supports iAMT (16.1), mounting brackets, 1x expansion slot (IP218 riser card) (RoHS2)
AMI242AFM-R	(AMI) Aluminum Chassis with MBE240 (R680E PCH), fanless design w/o CPU/ECC memory/SSD/power adaptor, Support iAMT (16.1), mounting brackets, 1x expansion slot (IP218 riser card) (RoHS2)

Recommended Processor List

Model	TDP	Base Frequency	Turbo Frequency	Cache	Core/Thread
i9-14900T	35W	1.1GHz	5.1GHz	36MB	24/32
i7-14700T	35W	1.3GHz	5.0GHz	33MB	20/28
i5-14500T	35W	1.7GHz	4.8GHz	24MB	14/20
i5-14400T	35W	1.5GHz	4.5GHz	20MB	10/16
i3-14100T	35W	2.7GHz	4.4GHz	12MB	4/8
i9-13900TE	35W	1.0GHz	5.0GHz	32MB	24/32
i7-13700TE	35W	1.1GHz	4.8GHz	30MB	16/24
i5-13500TE	35W	1.1GHz	4.5GHz	24MB	14/20
i3-13100TE	35W	2.4GHz	4.1GHz	12MB	4/8
G7400TE	35W	3.0GHz	N/A	6MB	2/4
G6900TE	35W	2.4GHz	N/A	4MB	2/2

Expansion Cards



Dimensions and Drawing

