

ASTUT-W155-PC1S

Heavy-duty Industrial Panel PC

All-in-One Panel PC with 7th/6th Gen Intel® Core™ i5 Processor and Riser Card Expansion

ASTUT Series 15.6"

I/O View



ASTUT-W155-PC1S



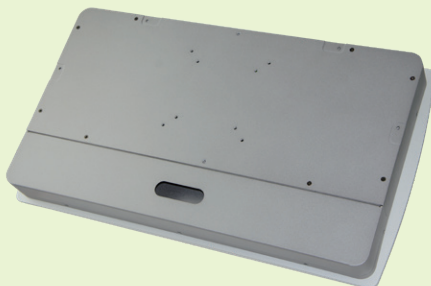
TAIWAN
EXCELLENCE
2016

Features

- Optional digitizer touch pen support
- Optional wireless communication
- Full flat bezel design



- I/O cover for cable arrangement
- Aluminum housing, perfect thermal design



- With riser card expansion slot
- PCI-E (x4) for ASTUT-W155-PC1S



- 12V~24V DC wide-range power input

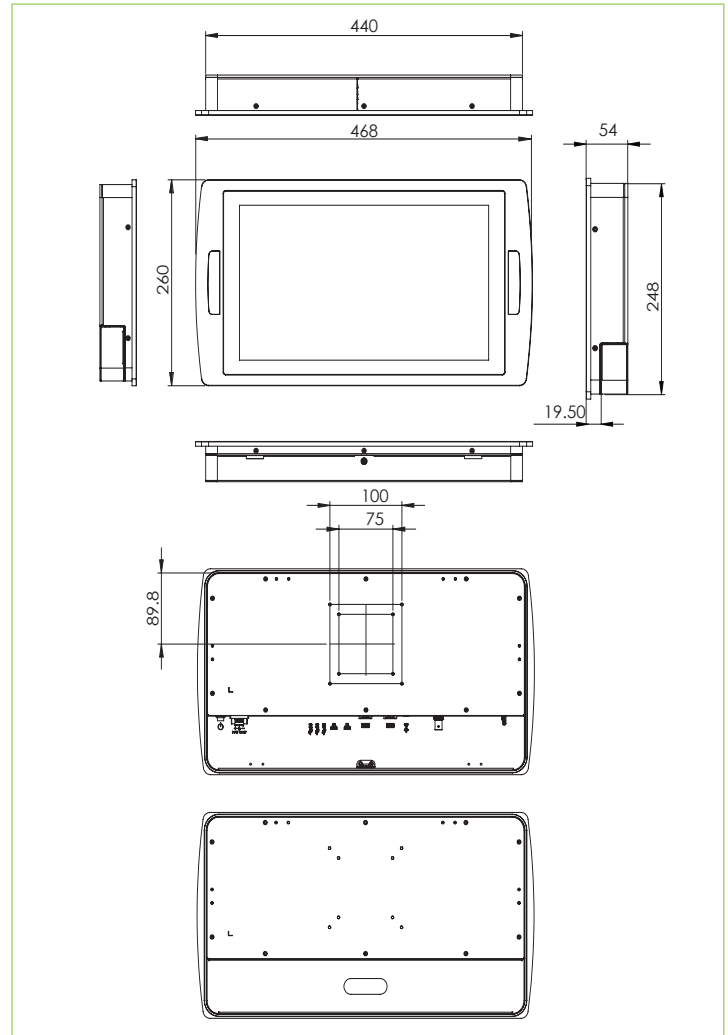


ASTUT-W155-PC1S

Specifications

| | | |
|-----------------------------|--|--|
| Display & Touch Screen | Display Size | 15.6" TFT-LCD |
| | Max. Resolution | 1366 x 768 |
| | Luminance (cd/m ²) | 300 |
| | Contrast | 500:1 |
| | Max. Color | 16.7M |
| | View Angle (H°/V°) | 160/160 |
| | Backlight Lifetime(hrs) | 50,000 |
| | Touch Type | Projected capacitive |
| | Touch Interface | USB |
| | Light Transmission (%) | 85 |
| Point of touch | 2 | |
| Expansion | Internal Expansion Bus | 1x Mini PCI-E Half/Full size 1x M.2 22x30 |
| | Expansion Slot | 1x PCI-E(x4) |
| | Wireless | optional Wi-Fi/BT/LTE/3G/RFID |
| I/O Interface | USB 3.0 | 4 |
| | USB 2.0 | 0 |
| | RS-232/422/485 Selectable in BIOS | 1 |
| | RS-232 | RS-485 only |
| | LAN | 2x GbE |
| | Additional Graphics | 1x HDMI |
| | Audio | None |
| | Digital I/O | None |
| | Power Connector | 3-pin terminal block |
| | Power Button | Rock switch |
| Mechanical | Dimensions (mm) | 468 x 260 x 54 |
| | Net Weight (kg) | 7 |
| System | Processor | Intel® Core™ i5-6300U 2.4GHz Intel® Core™ i5-7300U 2.4GHz |
| | Memory | 2x DDR4 2133 SO-DIMM, up to 16GB, default 4GB |
| | Thermal Design | Fanless |
| | Membrane Control | None |
| | Built-in Speaker/MIC | None |
| Storage Space | HDD | 1x 2.5" M.2 22x80 default 64GB optional 2.5" HDD |
| | Removable | None |
| Power | Power Input Range | 12V~24V DC |
| Construction | Chassis Material | Aluminum silver |
| | Color (Front/Back) | Silver / Silver |
| | IP Rating | IP65 front bezel |
| | Mounting | Panel mount and VESA 75x75, 100x100 mm |
| Environmental | Operating Temperature | 0°C ~ 50°C |
| | Storage Temperature | -20°C ~ 60°C |
| | Storage Humidity | 10%~90% (non-condensing) |
| | Certification | CE/FCC Class-B and LVD |
| Supported Operating Systems | Windows 10, Windows 8.1 64-bit Windows 7 (Intel® Core™ i5-6300U 2.4GHz SKU only) | |

Dimensions



Ordering Information

| | |
|--------------------------|---|
| ASTUT-W155-PC1S-K73 | 15.6" Industrial Panel PC with IBP-900K-7300, 7th Gen Intel® Core™ i5 7300U processor, 64GB M.2 SSD, PCI-E(x4) riser card, projective touch screen, 12V~24V DC power input, w/o power adaptor |
| ASTUT-W155-PC1S-S63 | 15.6" Industrial Panel PC with IBP-900S-6300, 6th Gen Intel® Core™ i5 6300U processor, 64GB M.2 SSD, PCI-E(x4) riser card, projective touch screen, 12V~24V DC power input, w/o power adaptor |
| ASTUT-W155-PC1S-K76 | 15.6" Industrial Panel PC with IBP-900K-7600, 7th Gen Intel® Core™ i5 7600U processor, 64GB M.2 SSD, PCI-E(x4) riser card, projective touch screen, 12V~24V DC power input, w/o power adaptor |
| ASTUT-W155-PC1S-S66 | 15.6" Industrial Panel PC with IBP-900S-6600, 6th Gen Intel® Core™ i5 6600U processor, 64GB M.2 SSD, PCI-E(x4) riser card, projective touch screen, 12V~24V DC power input, w/o power adaptor |
| Power adaptor (optional) | AC 90V~240V input, 12V DC output 84W power adaptor, IBASE P/N: A005PS084W0050000P |