

# Folk Art Flannel 3



by Janet Nesbitt of **ONE SISTER**



Quilt size: 81" x 81"

Skill Level: Intermediate

## Quilt 1

Designed by Denise Russell



49 West 37th Street  
New York, NY 10018  
Tel: 212-686-5194 - Fax: 212-532-3525  
Toll Free: 800-294-9495 - [www.henryglassfabrics.com](http://www.henryglassfabrics.com)

facebook

Free Project  
NOT FOR RESALE





# Folk Art Flannel 3

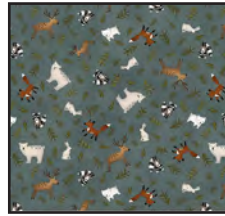
## Fabrics in the Collection



2374F-38 Animal Toss  
Cocoa



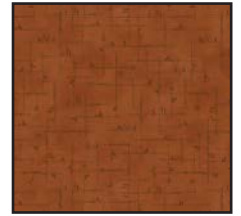
2374F-66 Animal Toss  
Forest



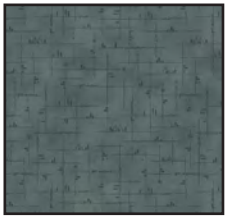
2374F-76 Animal Toss  
Teal



2375F-33 Broken Plaid  
Cream



2375F-35 Broken Plaid  
Russet



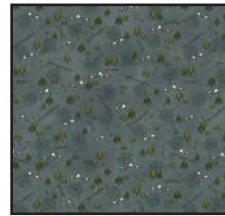
2375F-76 Broken Plaid  
Teal



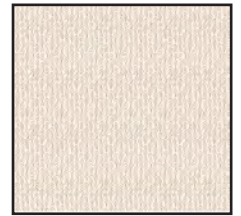
2376F-33 Compass Toss  
Cream



2376F-66 Compass Toss  
Forest



2376F-76 Compass Toss  
Teal



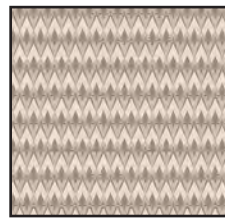
2377F-33 Tweed Trees  
Cream



2377F-35 Tweed Trees  
Russet



2377F-66 Tweed Trees  
Forest



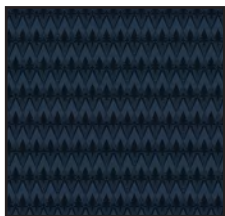
2378F-33 Mountain  
Texture - Cream



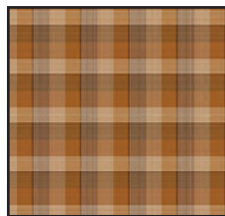
2378F-38 Mountain  
Texture - Chocolate



2378F-66 Mountain  
Texture - Forest



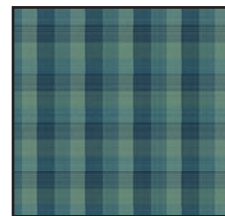
2378F-78 Mountain  
Texture - Indigo



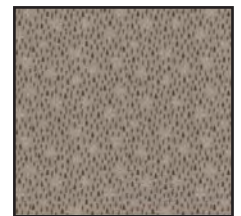
2379F-35 New Plaid  
Russet



2379F-66 New Plaid  
Forest



2379F-76 New Plaid  
Teal



2380F-9 Tree Texture  
Gray



2380F-35 Tree Texture  
Russet



2380F-66 Tree Texture  
Forest

# Folk Art Flannel 3 - Quilt 1 Page 1

## Materials

*Yardages and cutting instructions are based on 42" of usable fabric width.*

1/4 yard 2375F-76 Broken Plaid-Teal  
1/4 yard 2374F-38 Animal Toss-Cocoa  
1/3 yard 2379F-66 New Plaid-Forest  
1/3 yard 2379F-76 New Plaid-Teal  
1/3 yard 2379F-35 New Plaid-Russet  
1/3 yard 2376F-76 Compass Toss-Teal  
1/3 yard 2380F-66 Tree Texture-Forest  
1/3 yard 2376F-66 Compass Toss-Forest  
1/3 yard 2378F-66 Mountain Texture-Forest  
1/3 yard 2374F-66 Animal Toss-Forest  
3/8 yard 2378F-33 Mountain Texture-Cream  
1/2 yard 2380F-35 Tree Texture-Russet  
1/2 yard 2378F-38 Mountain Texture-Chocolate  
1/2 yard 2377F-66 Tweed Trees-Forest  
1/2 yard 2380F-9 Tree Texture-Gray  
2/3 yard 2378F-78 Mountain Texture-Indigo  
3/4 yard 2375F-33 Broken Plaid-Cream  
1 yard 2377F-35 Tweed Trees-Russet  
1 yard 2375F-35 Broken Plaid-Russet  
1-1/4 yards 2376F-39 Compass Toss-Cream  
1-3/8 yards 2374F-76 Animal Toss-Teal  
1-2/3 yards 2377F-33 Tweed Trees-Cream  
7-5/8 yards 2374F-66 Animal Toss-Forest for backing  
89" x 89" piece of batting  
Fusible Web

## Cut Fabrics

*Note: All strips are cut across the width of the fabric (WOF) from selvage to selvage unless otherwise noted. If cut across the length of the fabric (LOF), the LOF notation will be indicated.*

### From 2375F-76 Broken Plaid-Teal:

\*Cut two 2" x WOF strips. Sub-cut ten 2" x 5" strips.

### From 2374F-38 Animal Toss-Cocoa:

\*Cut one 3-1/2" x WOF strip. Sub-cut three 3-1/2" x 6-1/2" rectangles. (A)

### From 2379F-66 New Plaid-Forest:

\*Cut one 6-1/2" x WOF strip. Sub-cut four 6-1/2" squares.

### From 2379F-76 New Plaid-Teal:

\*Cut one 6-1/2" x WOF strip. Sub-cut:  
- Three 3-1/2" x 6-1/2" rectangles (B); and  
- Three 6-1/2" squares.

### From 2379F-35 New Plaid-Russet:

\*Cut one 6-1/2" x WOF strip. Sub-cut three 6-1/2" squares.

### From 2376F-76 Compass Toss-Teal:

\*Cut one 6-1/2" x WOF strip. Sub-cut:  
- One 6-1/2" x 6-1/2" square;  
- One 3-1/2" x 6-1/2" rectangle (C); and  
- Ten 2" x 6-1/2" strips.

### From 2380F-66 Tree Texture-Forest:

\*Cut one 5" x WOF strip. Sub-cut:  
- Ten 2" x 3-1/2" strips; and  
- Ten 2" x 5" strips.

### From 2376F-66 Compass Toss-Forest:

\*Cut one 8" x WOF strip. Sub-cut:  
- Ten 2" x 3-1/2" strips; and  
- Ten 2" x 8" strips.

### From 2378F-66 Mountain Texture-Forest:

\*Cut one 6-1/2" x WOF strip. Sub-cut two 6-1/2" squares.

### From 2374F-66 Animal Toss-Forest:

\*Cut one 6-1/2" x WOF strip. Sub-cut:  
- Three 3-1/2" x 6-1/2" rectangles (D); and  
- Three 6-1/2" x 6-1/2" squares.

### From 2378F-33 Mountain Texture-Cream:

\*Cut one 11" x WOF strip. Sub-cut:  
- One 3-1/2" x 6-1/2" rectangle (E); and  
- Two bears with template.

### From 2380F-35 Tree Texture-Russet:

\*Cut one 2" x WOF strip. Sub-cut twenty 2" squares.

\*Cut one 3-1/2" x WOF strip. Sub-cut three 3-1/2" x 6-1/2" rectangles. (F)

\*Cut one 8" x WOF strip. Sub-cut:  
- Ten 2" x 6-1/2" strips; and  
- Ten 2" x 8" strips.

# Folk Art Flannel 3 - Quilt 1 Page 2

## From 2378F-38 Mountain Texture-Chocolate:

\*Cut one 12-1/2" x WOF strip. Sub-cut two 12-1/2" x 18-1/2" rectangles.

## From 2377F-66 Tweed Trees-Forest:

\*Cut one 12-1/2" x WOF strip. Sub-cut one 12-1/2" square.

## From 2380F-9 Tree Texture-Gray:

\*Cut one 12-1/2" x WOF strip. Sub-cut:  
- One 12-1/2" square; and  
- Two 3-1/2" x 6-1/2" rectangles. (G)

## From 2378F-78 Mountain Texture-Indigo:

\*Cut one 6-1/2" x WOF strip. Sub-cut one 6-1/2" square.  
\*Cut one 12-1/2" x WOF strip. Sub-cut:  
- Ten 2" x 9-1/2" strips; and  
- Ten 2" x 12-1/2" strips.

## From 2375F-33 Broken Plaid-Cream:

\*Cut five 3-1/2" x WOF strips. Sub-cut sixty 3-1/2" squares. (W)  
\*Cut one 6-1/2" x WOF strip. Sub-cut twelve 3-1/2" x 6-1/2" rectangles. (H)

## From 2377F-35 Tweed Trees-Russet:

\*Cut two 3-1/2" x WOF strips. Sub-cut twenty-four 3-1/2" squares.  
\*Cut nine 2-1/2" x WOF strips for binding.

## From 2375F-35 Broken Plaid-Russet:

\*Cut one 6-1/2" x WOF strip. Sub-cut three 3-1/2" x 6-1/2" rectangles. (I)  
\*Cut one 12-1/2" x WOF strip. Sub-cut:  
- Ten 2" x 9-1/2" strips; and  
- Ten 2" x 12-1/2" strips.  
\*Cut one fox with template.

## From 2376F-39 Compass Toss-Cream:

\*Cut two 2" x WOF strips. Sub-cut:  
- Ten 2" squares; and  
- Ten 2" x 3-1/2" strips.  
\*Cut two 6-1/2" x WOF strips. Sub-cut:  
- Ten 2" x 5" strips;  
- Ten 2" x 6-1/2" strips; and

- Two 6-1/2" squares.

\*Cut two 12-1/2" x WOF strips. Sub-cut:  
- Twenty 2" x 9-1/2" strips; and  
- Ten 2" x 12-1/2" strips.

## From 2374F-76 Animal Toss-Teal:

\*Cut two 6-1/2" x WOF strips. Sub-cut:  
- Two 6-1/2" squares; and  
- Nine 3-1/2" x 6-1/2" rectangles. (J)  
\*Cut eight 4" x WOF strips for border 2.

## From 2377F-33 Tweed Trees-Cream:

\*Cut two 3-1/2" x WOF strips. Sub-cut:  
- Eight 3-1/2" squares (X);  
- Ten 2" x 3-1/2" strips; and  
- Ten 2" squares.  
\*Cut one 6-1/2" x WOF strip. Sub-cut:  
- Ten 2" x 5" strips; and  
- Ten 2" x 6-1/2" strips.  
\*Cut one 9-1/2" strip. Sub-cut:  
- Ten 2" x 8" strips; and  
- Ten 2" x 9-1/2" strips.  
\*Cut two 12-1/2" x WOF strips. Sub-cut:  
- Twenty 2" x 9-1/2" strips; and  
- Ten 2" x 12-1/2" strips.  
\*Cut one hare with template.  
\*Cut eight 1-1/2" x WOF strips for border 1.

## Assemble Blocks

### Notes:

- Measurements include 1/4" seam allowances. Sew with right sides together unless otherwise stated. If no direction is specified, press seams toward darker fabric.*
- The instructions included for the bear, fox, and hare are for machine appliqué.*

1. Draw a diagonal line on the wrong side of six 3-1/2" 2375F-33 Broken Plaid-Cream W squares. With right sides together, layer a marked W square on the left short end of a 3-1/2" x 6-1/2" 2380F-35 Tree Texture-Russet F rectangle and stitch on the drawn line. Trim 1/4" away from the seam line and press open. In the same manner, stitch another W square to the opposite end of the same rectangle (*figure 1*, next page). Repeat to make a total of three flying-geese units.



# Folk Art Flannel 3 - Quilt 1 Page 3



Figure 1 – Make 3.

2. Repeat step 1 with **forty-two** 3-1/2" W squares and three B rectangles, nine J rectangles, one E rectangle, three D rectangles, one C rectangle, three I rectangles, and two G rectangles. In the same manner, make three flying geese with the eight 3-1/2" X squares, the three A rectangles and one B rectangle (*figure 2*).

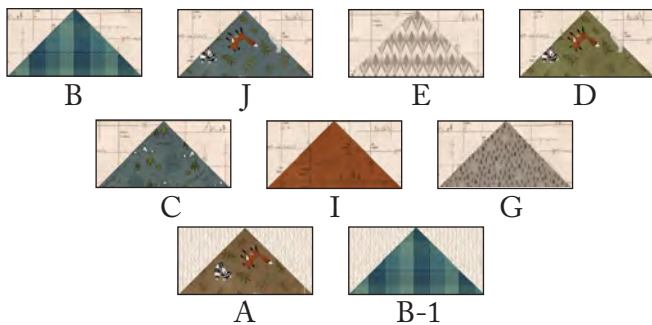


Figure 2

3. Sew the 6-1/2" 2378F-78 Mountain Texture-Indigo to one 6-1/2" 2379F-66 New Plaid-Forest square. Press the seam toward Indigo square. Sew together three step 1 flying geese and one step 2 B flying geese as shown below. Sew the Indigo/New Plaid-Forest strip to the flying geese strip to make one 12-1/2" block (*figure 3*). Press the seam away from flying geese.



Figure 3

4. Repeat step 3 with one 6-1/2" 2379F-66 New Plaid-Forest square, one 6-1/2" 2374F-76 Animal Toss-Teal square, the three step 2 I flying geese, and one B flying geese (*figure 4*).



Figure 4

5. Repeat step 3 with one 6-1/2" 2379F-66 New Plaid-Forest square, one 6-1/2" 2374F-76 Animal Toss-Teal square, three step 2 D flying geese, and one C flying geese (*figure 5*).

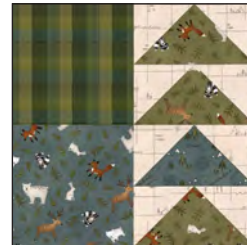


Figure 5

6. Repeat step 3 with the last 6-1/2" 2379F-66 New Plaid-Forest square, one 6-1/2" 2376F-76 Compass Toss-Teal square, three step 2 J flying geese, and one E flying geese (*figure 6*).

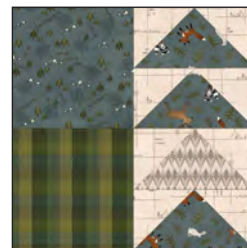


Figure 6

7. Repeat step 1 with the twenty-four 3-1/2" 2377F-35 Tweed Trees-Russet squares and the twelve 3-1/2" x 6-1/2" 2375F-33 Broken Plaid-Cream H rectangles to make twelve flying-geese units (*figure 7*).



Figure 7 – Make 12.

8. Sew two step 7 flying geese to opposite sides of one 6-1/2" 2379F-35 New Plaid-Russet square (*figure 8*). Press the seams toward center. Repeat to make three strips.



Figure 8 – Make 3.

# Folk Art Flannel 3 - Quilt 1 Page 4

9. Sew the remaining 3-1/2" 2375F-33 Broken Plaid-Cream W squares to the short ends of the remaining step 7 flying geese (*figure 9*). Press the seams away from center. Make a total of six strips.



Figure 9 – Make 6.

10. Noting fabric orientation, sew one step 9 strip to the top and one to the bottom of the step 8 units (*figure 10*). Press the seams open. Make a total of three 12-1/2" blocks.

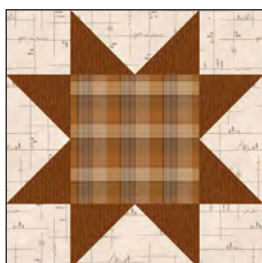


Figure 10 – Make 3.

11. Make one 4-patch unit by sewing together two 6-1/2" 2379F-76 New Plaid-Teal squares and two 6-1/2" 2374F-66 Animal Toss-Forest squares (*figure 11*). Press the seams open.



Figure 11

12. Repeat step 11 with the two 6-1/2" 2376F-39 Compass Toss-Cream squares and the two 6-1/2" 2378F-66 Mountain Texture-Forest squares (*figure 12*).

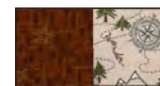


Figure 12

13. Sew the ten 2" 2377F-33 Tweed Trees-Cream squares to the ten 2" 2380F-35 Tree Texture-Russet squares. Press the seams to the dark fabric. Repeat with the 2" 2376F-39 Compass Toss-Cream squares and the remaining 2" Russet squares (*figure 13*).



Unit Y



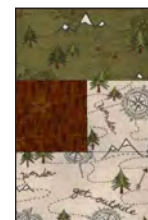
Unit Z

Figure 13 – Make 10 of each.

14. Sew a 2" x 3-1/2" 2377F-33 Tweed Trees-Cream strip to the bottom of the step 13 units Y and a 2" x 3-1/2" 2380F-66 Tree Texture-Forest strip to their top. Press the seams away from center (until completion of these blocks). Repeat with the units Z and the 2" x 3-1/2" 2376F-39 Compass Toss-Cream strips and the 2" x 3-1/2" 2376F-66 Compass Toss-Forest strips (*figure 14*).



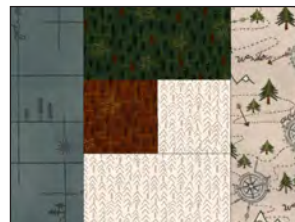
Unit Y



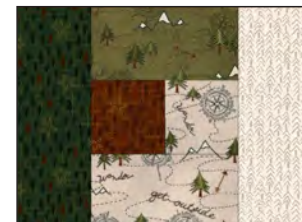
Unit Z

Figure 14

15. Sew a 2" x 5" 2375F-76 Broken Plaid-Teal strip to the left side and a 2" x 5" 2376F-39 Compass Toss-Cream to the right side of the step 14 units Y. Repeat by sewing the 2" x 5" 2380F-66 Tree Texture-Forest strips to the left and the 2" x 5" 2377F-33 Tweed Trees-Cream strips to the right of the units Z (*figure 15*).



Unit Y

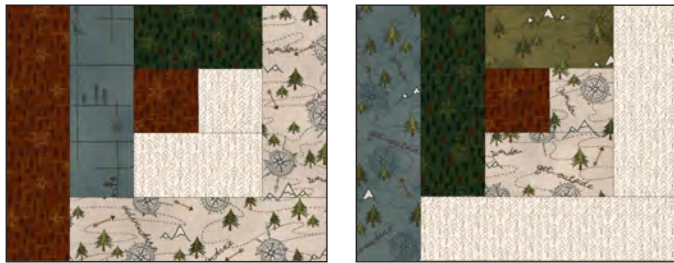


Unit Z

Figure 15

# Folk Art Flannel 3 - Quilt 1 Page 5

16. Sew a 2" x 6-1/2" 2376F-39 Compass Toss-Cream strip to the bottom of the step 15 units Y. Press. Sew a 2" x 6-1/2" 2380F-35 Tree Texture-Russet to their left side. Repeat by sewing the 2" x 6-1/2" 2377F-33 Tweed Trees-Cream strips to the bottom and the 2" x 6-1/2" 2376F-76 Compass Toss-Teal strips to the left of the units Z (figure 16).



Unit Y

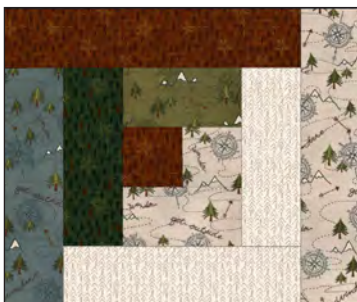
Unit Z

Figure 16

17. Sew a 2" x 8" 2376F-66 Compass Toss-Forest strip to the top and one 2" x 8" 2377F-33 Tweed Trees-Cream strip to the right side of all the step 16 units Y. Repeat by sewing the 2" x 8" 2380F-35 Tree Texture-Russet strips to the top and the 2" x 8" 2376F-39 Compass Toss-Cream strip to the right of all the units Z (figure 17).



Unit Y



Unit Z

Figure 17

18. Sew a 2" x 9-1/2" 2377F-33 Tweed Trees-Cream strip to the bottom and a 2" x 9-1/2" 2378F-78 Mountain Texture-Indigo strip to the left of all the units Y. Repeat by sewing a 2" x 9-1/2" 2376F-39 Compass Toss-Cream strip to the bottom and a 2" x 9-1/2" 2375F-35 Broken Plaid-Russet strip to the left of all the units Z (figure 18).



Unit Y



Unit Z

Figure 18

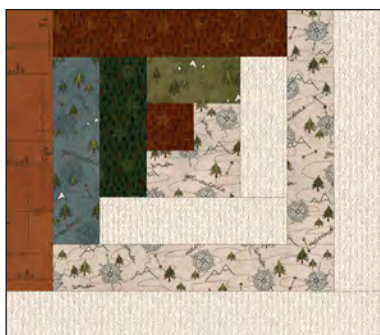
19. Sew a 2" x 9-1/2" 2376F-39 Compass Toss-Cream strip to the right and one 2" x 12-1/2" 2376F-39 Compass Toss-Cream strip to the bottom of all units Y. Repeat by sewing a 2" x 9-1/2" 2377F-33 Tweed Trees-Cream strip to the right and a 2" x 12-1/2" 2377F-33 Tweed Trees-Cream strip to the bottom of all units Z (figure 19).



Unit Y

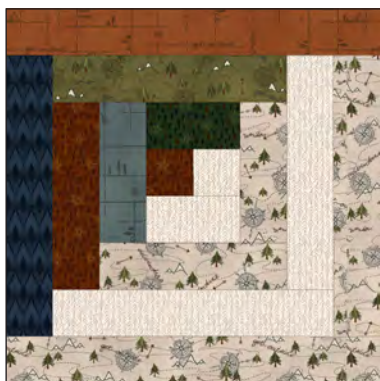


# Folk Art Flannel 3 - Quilt 1 Page 6



Unit Z  
Figure 19

20. Sew a 2" x 12-1/2" 2375F-35 Broken Plaid-Russet to the top of all units Y and a 2" x 12-1/2" 2378F-78 Mountain Texture-Indigo strip to the top of all units Z to complete ten 12-1/2" blocks of each type (figure 20).



Unit Y



Unit Z

Figure 20 – Make 10 of each.

21. Place the hare shape onto a light box or window pane. Layer the fusible web onto the shape and trace.

Cut it 1/8" outside the outline and fuse to the wrong side of the 2377F-33 Tweed Trees-Cream. Cut on the outline and remove paper backing. Position appliqué on the 12-1/2" 2377F-66 Tweed Trees-Forest square and fuse it according to manufacturer's instructions. Machine appliqué using matching thread and the blanket stitch.

22. Sew three step 2 J flying geese and one G flying geese into a strip. Repeat to make two strips. Sew one strip to each side of the step 21 appliqué block (figure 21). Press the seams toward center. Block measures 12-1/2" x 24-1/2".

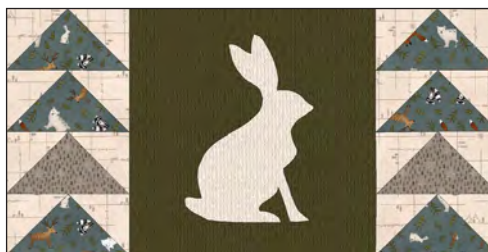


Figure 21

23. Repeat step 21 to prepare the fox shape which is fused to the wrong side of the 2375F-35 Broken Plaid-Russet fabric and is fused to the 12-1/2" 2380F-9 Tree Texture-Gray square (figure 22).



Figure 22

24. Repeat step 21 to prepare the bear shapes (they face opposite directions) which are fused to the wrong side of the 2378F-33 Mountain Texture-Cream fabric and are fused to the 12-1/2" x 18-1/2" 2378F-38 Mountain Texture-Chocolate rectangles.

25. Sew the step 2 A flying geese and the remaining B-1 flying geese to form a strip. Sew this strip to the right side of the left facing bear block (figure 23, next page). Press the seam toward the bear.



# Folk Art Flannel 3 - Quilt 1 Page 7



Figure 23

26. Sew together the last 6-1/2" 2374F-66 Animal Toss-Forest and last 6-1/2" 2379F-76 New Plaid-Teal squares. Press the seam to the dark fabric. Sew this strip to the right side of the right facing bear block (*figure 24*). Press the seam toward bear.



Figure 24

## Assemble Quilt Top

27. Following the quilt photo and diagram for block placement and orientation, lay out six rows of six blocks each. Sew the blocks together in each row, then sew the rows together in order, matching adjacent seams.

28. For border 1, sew together the eight 1-1/2" 2377F-33 Tweed Trees-Cream strips end to end using diagonal seams. Measure the vertical length of the quilt top through the center and cut two border strips that length. Sew strips to the sides of the quilt top. Measure the width of the quilt top through its center. Cut two border strips that length and sew one to the top and one to the bottom. Press seams toward borders.

29. Repeat step 28 with the eight 4-1/2" 2374F-76 Animal Toss-Teal strips to make and add border 2.

## Finishing

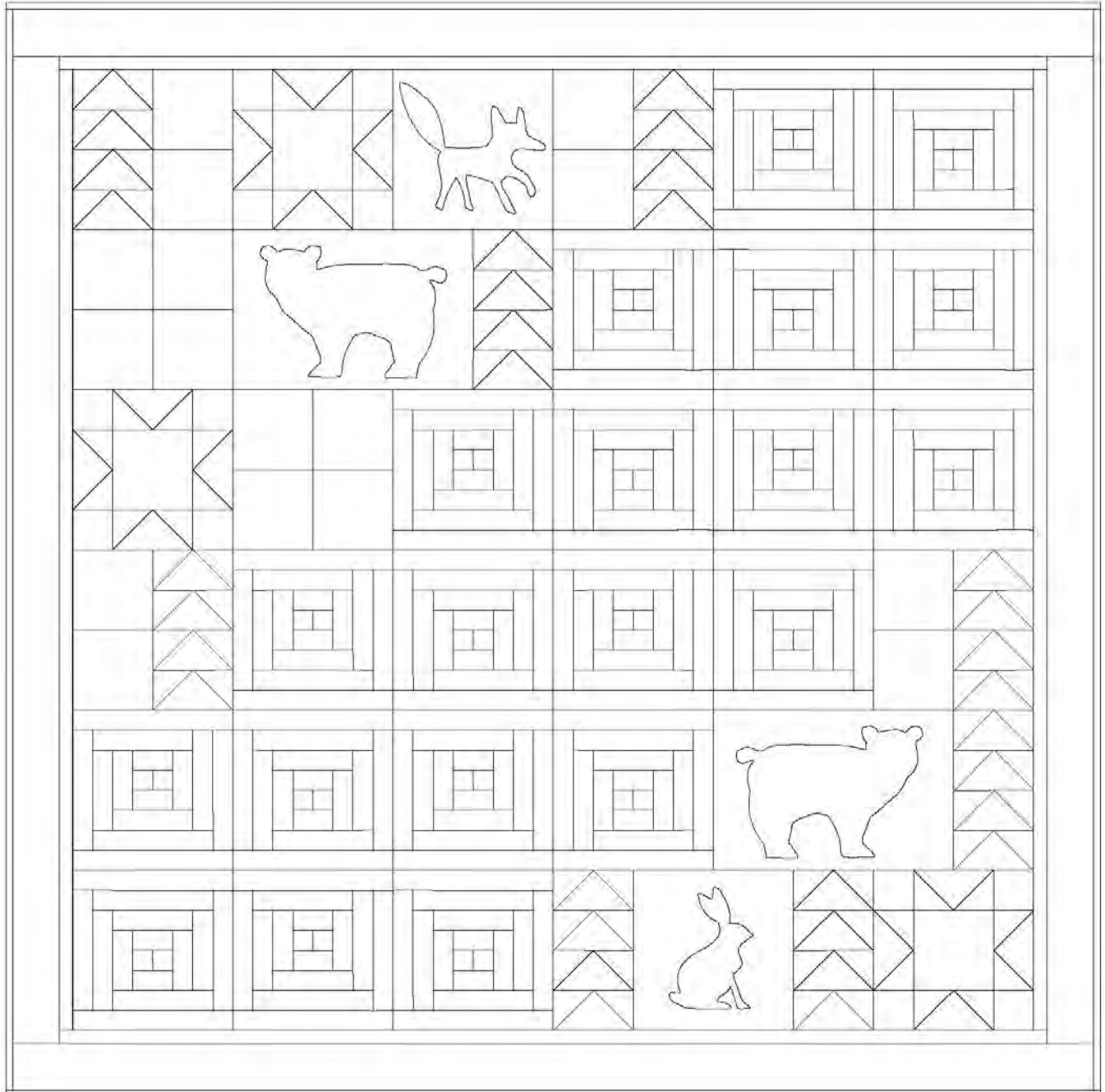
30. Create a quilt sandwich with the batting between the quilt top and the backing. Pin or baste layers together, mark quilting design, and quilt by hand or machine. When quilting is complete, remove pins or basting, and trim batting and backing even with raw edges of the quilt top.

31. Join the nine 2-1/2" 2377F-35 Tweed Trees-Russet binding strips together end to end using a diagonal seam to make one long strip. Fold in half lengthwise, and press. Sew binding to the edges of the table runner, mitering corners, and overlapping ends. Fold binding to the back of the quilt and stitch it in place by hand to finish.

©2019 Henry Glass & Co. Inc.

*Every effort has been made to ensure that all projects are error free. All the information is presented in good faith; however, no warranty can be given nor results guaranteed as we have no control over the execution of instructions. Therefore, we assume no responsibility for the use of this information or damages that may occur as a result. When errors are brought to our attention, we make every effort to correct and post a revision as soon as possible. Please make sure to check [www.henryglassfabrics.com](http://www.henryglassfabrics.com) for pattern updates prior to starting the project. We also recommend that you test the project prior to cutting for kits. Finally, all free projects are intended to remain free to you and are not for resale.*

# Folk Art Flannel 3 - Quilt 1 Page 8

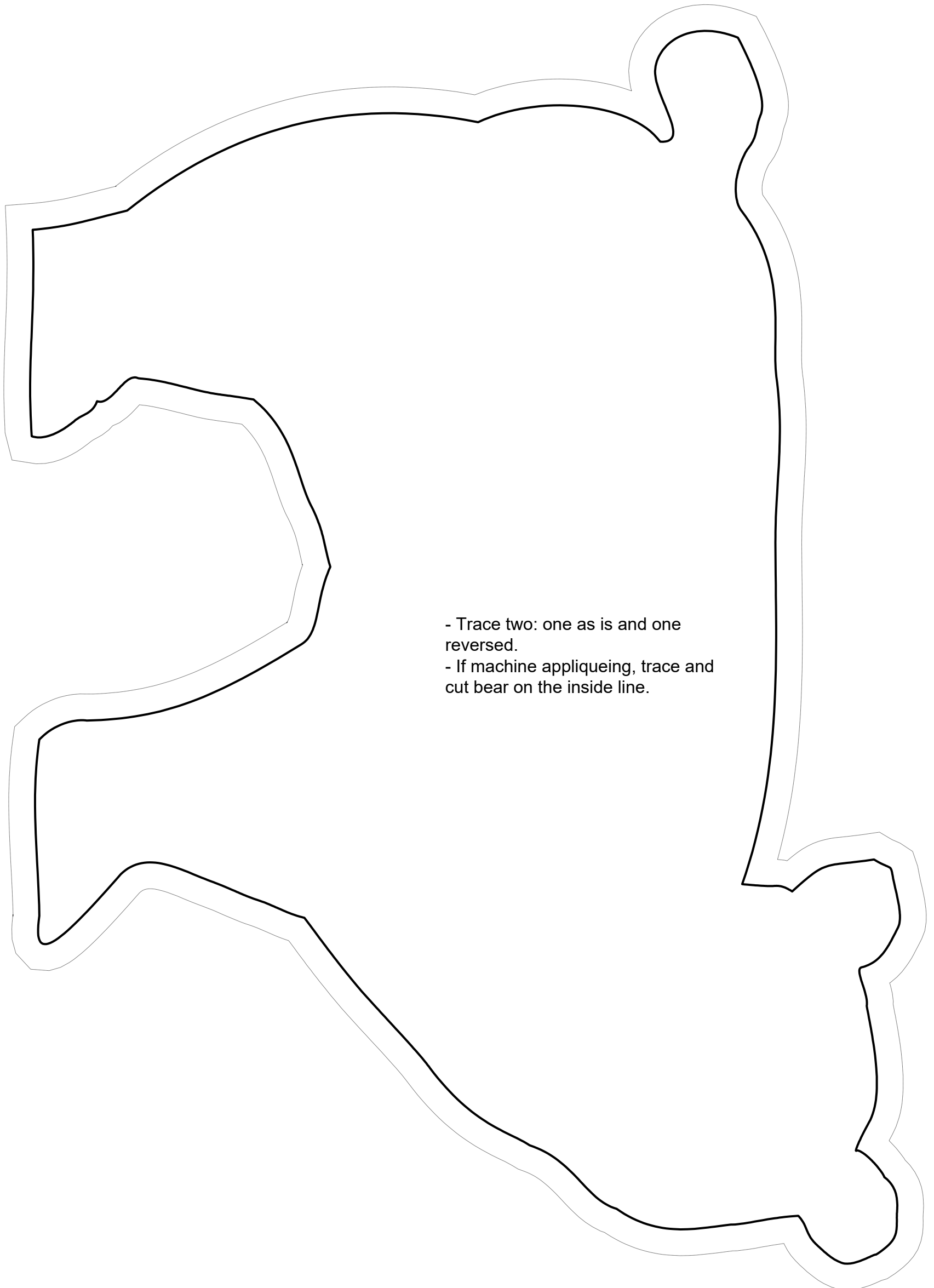


Quilt Diagram



# Folk Art Flannel - Quilt 1 - Bear Template

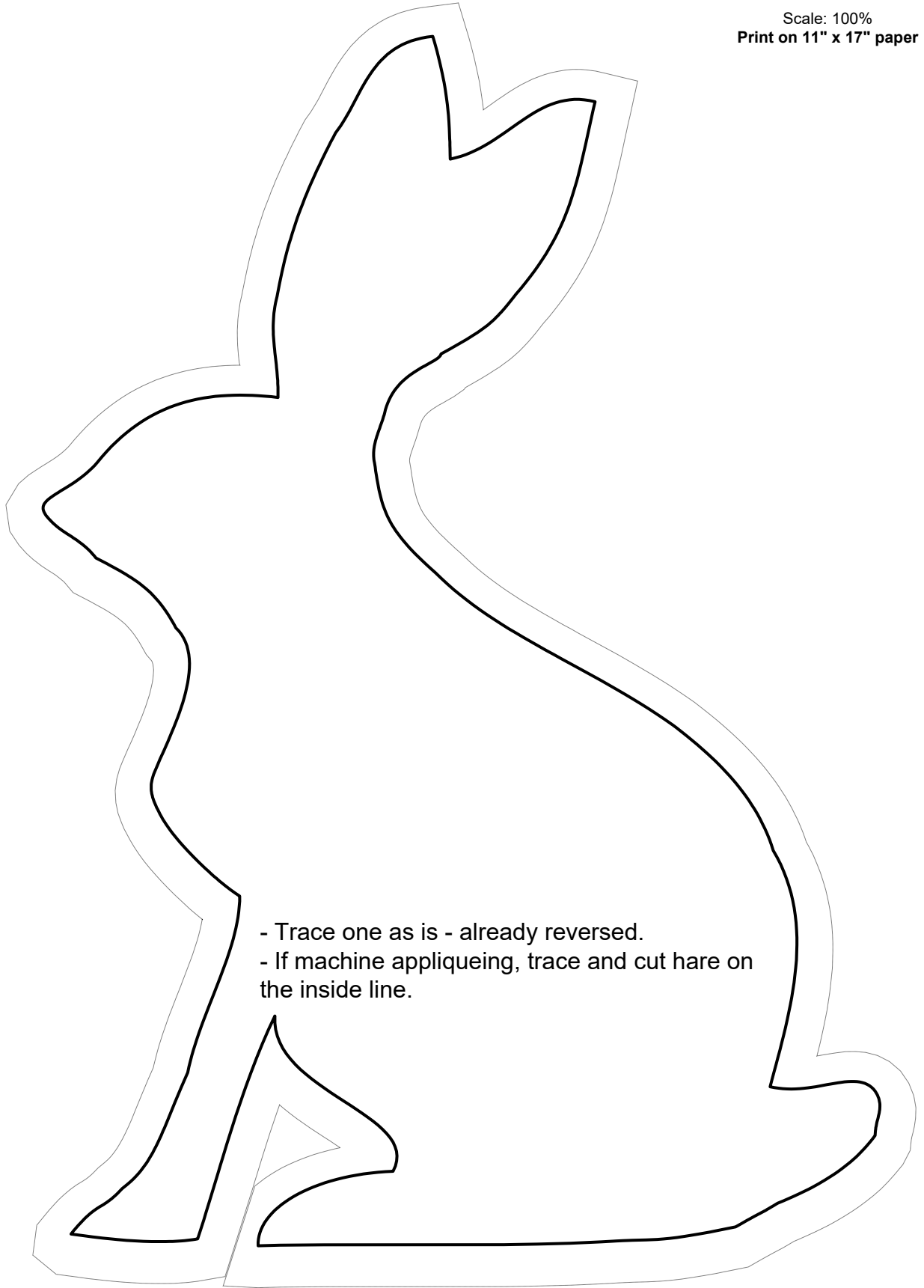
Scale: 100%  
Print on 11" x 17" paper



- Trace two: one as is and one reversed.
- If machine appliqueing, trace and cut bear on the inside line.

# Folk Art Flannel - Quilt 1 - Hare Template

Scale: 100%  
Print on 11" x 17" paper



- Trace one as is - already reversed.
- If machine appliqueing, trace and cut hare on the inside line.



# Folk Art Flannel - Quilt 1 - Fox Template

Scale: 100%  
Print on 11" x 17" paper

