



LIGHTING INVENTORY

QUANTITY	DESCRIPTION
243	ETC Source Four Bodies (165 lamped at 750 watt / 48 lamped at 575 watt)
27	10 degree lens
63	19 degree lens
7	19 degree Hi-Definition lens
87	26 degree lens
51	36 degree lens
6 + 2HD	50 degree lens
Source Four Pars	
93	Source Four PAR's (VNSP, NSO, MFL, WFL) (Lamped at 750 watt)
8	Source Four PAR's (VNSP, NSO, MFL, WFL) (Lamped at 575 watt)
Par Lens	Par Lens Only
48	Wide Lens
67	Medium Lens
74	Narrow Lens
119	Very Narrow Lens
Cyclorama Fixtures	
24	3-cell (650 watts per cell) units. Selecon "Hui" Units can be configured for overhead or ground row use. (12 overhead, 12 ground row)
Spot Lights	
4	Lycian 4K (model 1295 XLT) Throw to stage: 157' These can be lamped to 3K lamps with 2 months' notice
Light Board	
1	ETC ION Console v.1.9 with RPU
1	Remote video interface with 2 DVI flat screen monitors
Stage Booms	
6	12' Threaded Pipe for Stage Booms
8	Bases for Stage Booms



LIGHTING INVENTORY

<u>QUANTITY</u>	<u>DESCRIPTION</u>
12	LED Robe iBAR 15
3	LED Robe Spider Wash Beam

POWER		
LOCATION	QUANTITY	DESCRIPTION
Grid Stage Right	1	100-amp, 120/208v 3 phase, cam tie ins
Grid Stage Left	1	100-amp, 120/208v 3 phase, cam tie ins
Down Stage Right	2	400-amp, 3 Phase, requires cam locks
Stage Left Prop Room	1	400-amp, 3 phase, requires tails
Upstage Right	1	30-amp, 3 phase, requires tails (8-10 AWG)
Upstage Right	1	60-amp, 3 phase, requires tails (8-10 AWG)
Down Stage Left And/Or* SR Power Rm	1	TIE INS: 200-amp, 3 phase, requires tails *Isolated Ground for Audio *200amps total in parallel*
Balcony Rail & Box Boom	0	208 is not available in this area 1 *if needed it is a 200' run from down stage right or left*
Spot Booth	8	60-amp spotlight disconnects 4 in use when house spots used
Shore Power	4	Max 200 amp available, 3 phase (2 tails) **Show needs to provide jumpers & 50-100 feet of feeder required depending on placement of bus**
Shore Power Pig Tails	2	14-50-amp tails **Show needs to provide jumpers at least 50ft. of feeder depending on where they are parked**
Catering Tie In	1	100-amp 3 phase or 208 single phase Cables not provided by house will need at least 100' of bare end/tails cable for tie in



LIGHT INVENTORY

Multi - Cable	
12	100' Multi-Cable
6	75' Multi-Cable
4	50' Multi- Cable
4	25' Multi – Cable
5	As needed, Multi- Cable in Sky to accommodate show installed FOH truss
Breakouts	
56	3 Breakins / 6 Circuit breakouts

DMX	
LOCATION	DESCRIPTION
Balcony Rail Stage Right	2 Female Lines / Originating from DSR
R&R Mix Position	3 Male Lines / 1 Female Line / Originating from DSR
Rear of House Lighting Area	3 Male Lines / 1 Female Line / Originating from DSR
Sky Truss	2 Cables / Originating from DSR

ETHERNET		
LOCATION	QUANTITY	DESCRIPTION
Rear of House Mix	2	Dry Lines Terminate at the “Hub” board DSR
Rock & Roll Mix	2	Dry Lines Terminate at the “Hub” board DSR

Copy of a house lighting plot is available upon request. We do not keep a standard lighting hang over stage or FOH. Use of an in-house lighting hang may require a pre hang ahead of load in.

POWER STAGE RIGHT

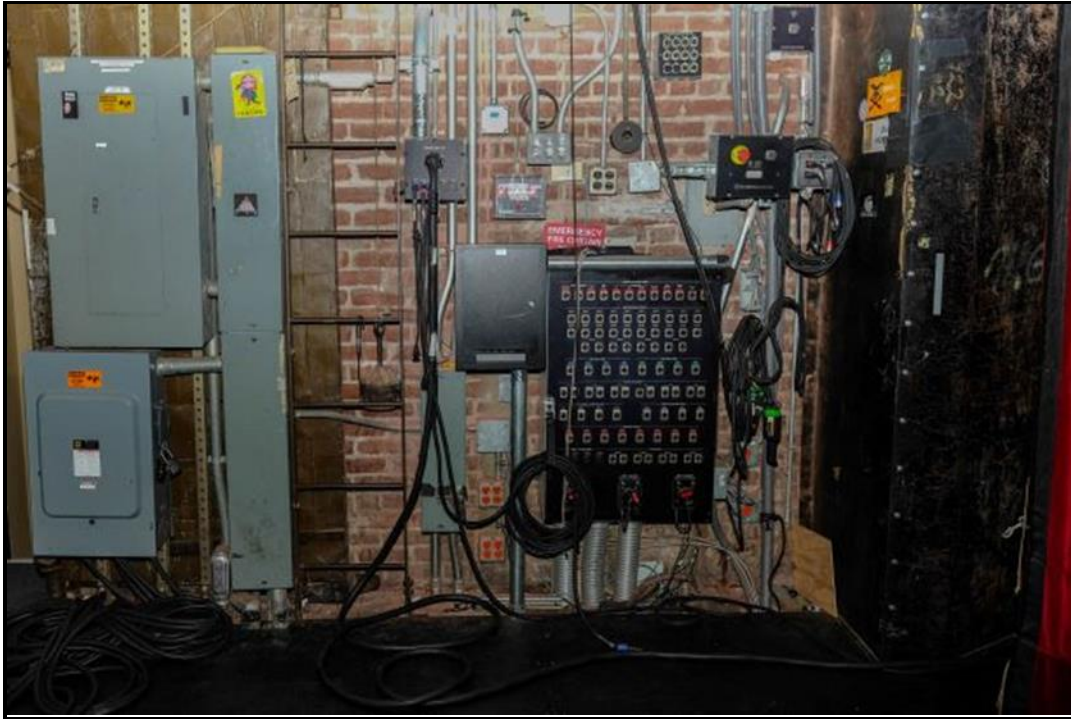


CAM LOCKS DOWN STAGE RIGHT (DSR)



POWER DISCONNECT UP STAGE RIGHT (USR)

POWER STAGE LEFT



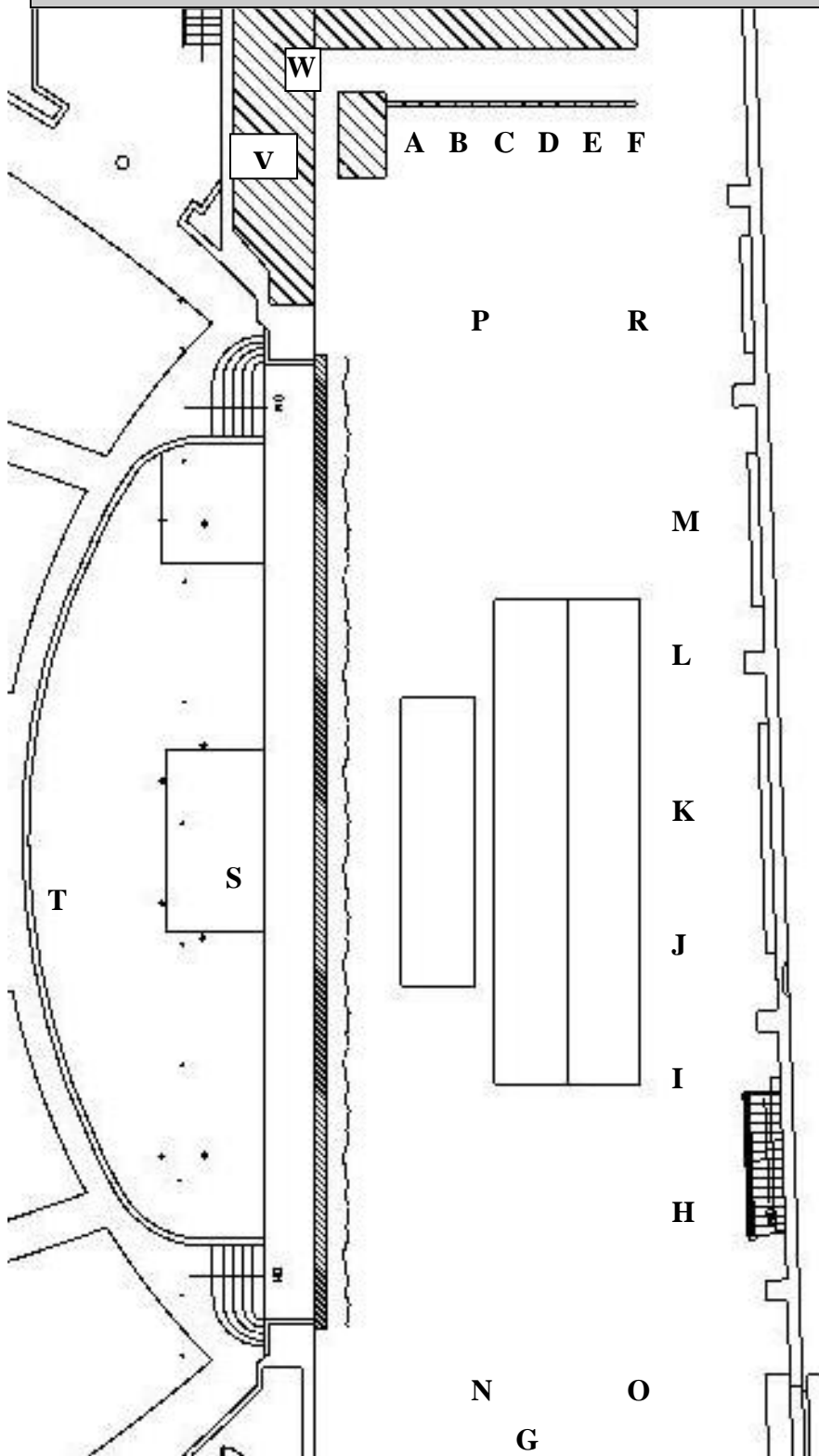
POWER DOWN STAGE LEFT (DSL)



POWER STAGE LEFT PROP ROOM



DIMMER CIRCUITS



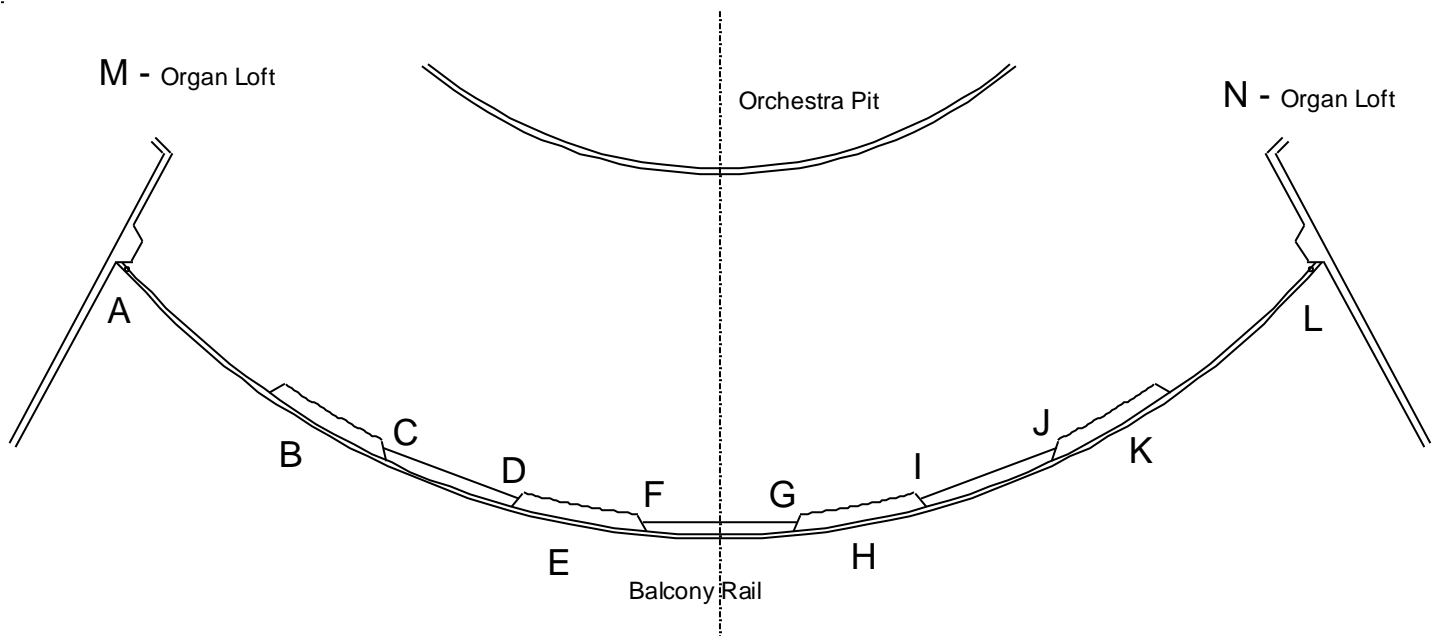
KEY

- A** - Dimmers 1 – 36
Floor Box – 6 Socopex (6 circuits ea)
- B** - Dimmers 37 – 72
Floor Box – 6 Socopex (6 circuits ea)
- C** - Dimmers 73 – 108
Floor Box – 6 Socopex (6 circuits ea)
- D** - Dimmers 109 – 144
Floor Box – 6 Socopex (6 circuits ea)
- E** - Dimmers 145 – 180
Floor Box – 6 Socopex (6 circuits ea)
- F** - Dimmer 288
2 Stagepin receptacles – Dimmer 288
4 Edison receptacles – Non-Dims
(each is separate 20a circuit)
- G** - Dimmers 181 – 216
Wall Box – 6 Socopex (6 circuits ea)
- H** - Dimmers 217 – 219 (Cyc Floor Box)
- I** - Dimmers 220 – 222 (Cyc Floor Box)
- J** - Dimmers 223 – 225 (Cyc Floor Box)
- K** - Dimmers 226 – 228 (Cyc Floor Box)
- L** - Dimmers 229 – 231 (Cyc Floor Box)
- M** - Dimmers 232 – 234 (Cyc Floor Box)
- N** - Dimmers 235 + 236 (DSL Floor Box)
- O** - Dimmers 237 + 238 (USL Floor Box)
- P** - Dimmers 239 + 240 (DSR Floor Box)
- R** - Dimmers 241 + 242 (USR Floor Box)
- S** - Dimmer 243 (Act Lift Floor Box)
- T** - Dimmers 244 + 245 (Orch. Pit Floor Box)
- V** - Dimmers 246 – 287
FOH Transfer Patch Bay
All connections done with Stage Pin
- W** - Dimmers 289-336



FRONT OF HOUSE DIMMER CIRCUITS

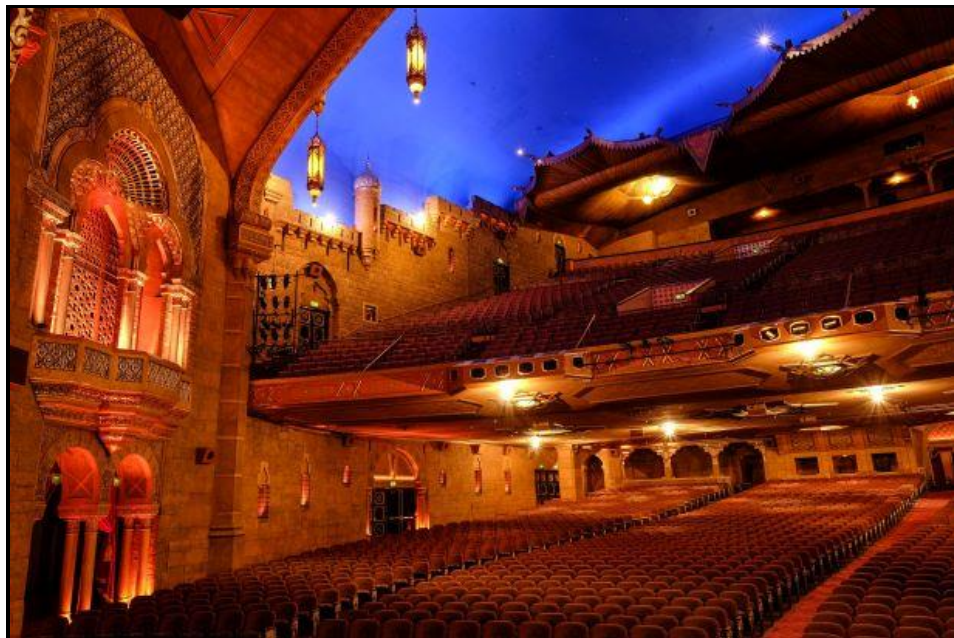
Location of FOH Circuits	Number of Circuits	Transfer Patch Numbers
A	18	1 – 18
B	1	19-22
C	6	23-28
D	6	29-34
E	1	35-38
F	6	39-44
G	6	45-50
H	1	51-54
I	6	55-60
J	6	61-66
K	1	67-70
L	18	71-88
M	6	89-94
N	6	95-100



FRONT OF HOUSE BALCONY RAIL VIEWS



HOUSE VIEW BALCONY RAIL (3 Total positions)



HOUSE RIGHT BOX BOOMS –duplicated house left