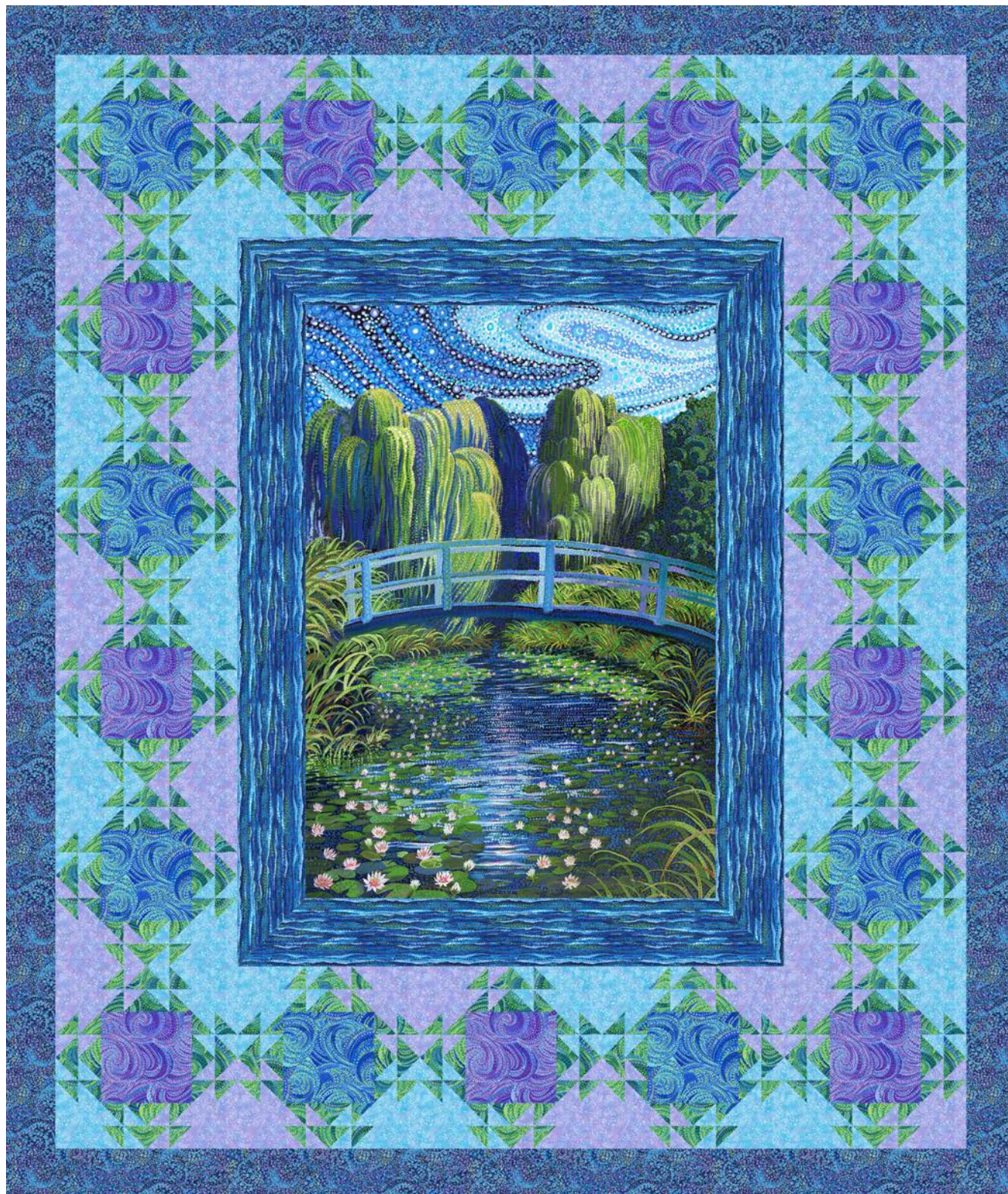


# Water Garden

Quilt Designed by eQuilter



66-1/2" x 78-1/2"



*Please read all instructions before beginning.  
Pre-washing not recommended.*

## Yardages and Cutting

*WOF is 42" width of fabric from selvage edge to selvage edge.*

### 1 Water Garden panel

- Fussy Cut (1) 27-1/2" x 39-1/2" frame centering on the landscape scene.

### 1/2 yards Blue Swirl print

- (2) strips 6-1/2" x WOF; subcut into:  
(9) 6-1/2" x 6-1/2" squares.

### 1/2 yards Violet Swirl print

- (2) strips 6-1/2" x WOF; subcut into:  
(9) 6-1/2" x 6-1/2" squares.

### 1-1/2 yards Green Swirl print

- (9) strips 2-3/8" x WOF; subcut into:  
(144) 2-3/8" x 2-3/8" squares. Then draw a diagonal line onto the WRONG SIDE of the fabric from tip to tip.
- (13) strips 2" x WOF; subcut into:  
(144) 2" x 3-1/2" rectangles.

### 1-1/4 yards Light Blue tonal

- (4) strips 3-1/2" x WOF; subcut into:  
(36) 3-1/2" x 3-1/2" squares.
- (5) strips 2-3/8" x WOF; subcut into:  
(72) 2-3/8" x 2-3/8" squares.
- (7) strips 2" x WOF; subcut into:  
(144) 2" x 2" squares.

### 1-1/4 yards Light Violet tonal

- (4) strips 3-1/2" x WOF; subcut into:  
(36) 3-1/2" x 3-1/2" squares.
- (5) strips 2-3/8" x WOF; subcut into:  
(72) 2-3/8" x 2-3/8" squares.
- (7) strips 2" x WOF; subcut into:  
(144) 2" x 2" squares.

### 3/4 yards Blue Stripe print

- (5) strips 5" x WOF; subcut into:  
(2) 5" x 41" rectangles.  
Join remaining (3) strips on the short ends with diagonal seams, then cut into  
(2) 5" x 53" rectangles.

### 1-1/2 yards Blue Dot print

- (8) strips 3-1/2" x WOF; join the strips on the short ends with diagonal seams, then cut into (2) strips 3-1/2" x 72-1/2", and  
(2) strips 3-1/2" x 66-1/2".
- (8) strips 2-1/4" x WOF for Binding.

### 5-1/2 yards for 42" backing

- 2 strips 94" x WOF for backing. **OR**

### 2-1/2 yards wide backing fabric

- 1 piece 82" x 94"

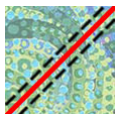
### Batting

- 1 piece 82" x 94"

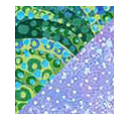
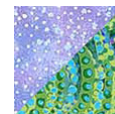
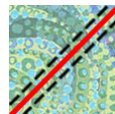
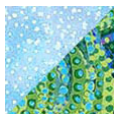
## Piecing the Blocks

*Refer to the Exploded Quilt Diagram throughout the following steps.*

1. Layer (1) 2-3/8" Green Swirl square onto (1) 2-3/8" Light Blue square, RIGHT SIDES TOGETHER, and sew a 1/4" seam allowance on each side of the drawn line. Cut on the drawn line to make (2) Blue Half Square Triangles. Repeat to make (144) Blue Half Square Units. Then repeat with Green Swirl squares and Light Violet squares to make (144) Violet Half Square Units.



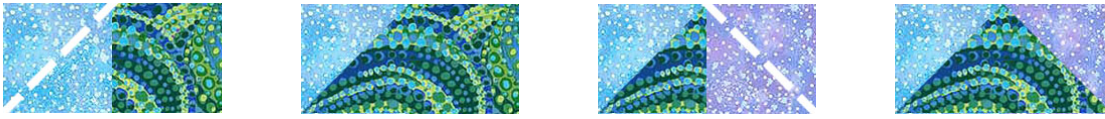
**Blue Half Square Unit - Make (144)**



**Violet Half Square Unit - Make (144)**

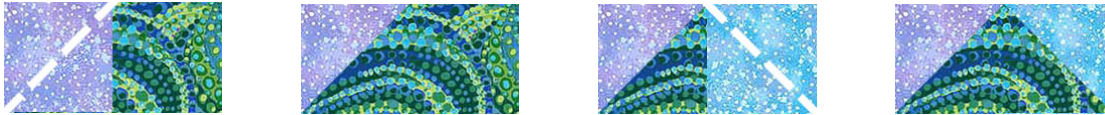
2. Draw a diagonal line on the wrong side of each 2" x 2" Light Blue and Light Violet squares.

3. Place a marked 2" Light Blue square right sides together on a left corner of a 2" x 3-1/2" Green Swirl rectangle. Sew on the line. Trim seam allowance 1/4" from the stitched line. Repeat on the right corner of the rectangle using a 2" Light Violet square. Press the Light triangles open to complete the Blue / Violet Rectangle. Repeat to make (72) Blue / Violet Rectangles.



**Blue / Violet Rectangle - Make (72)**

4. Repeat Step 3 with a 2" Light Violet square on the left corner and a Light Blue square on the right corner to make (72) Violet / Blue Rectangles.



**Violet / Blue Rectangle - Make (72)**

5. Join together (1) Blue Half Square Unit, (1) Blue / Violet Rectangle and (1) Violet Half Square Unit to make a Blue / Violet Block Unit. Repeat to make (72) Blue / Violet Block Units. Then repeat with Violet Half Square Units, Violet / Blue Rectangles and Blue Half Square Units. to make (72) Violet / Blue Block Units.



**Blue / Violet Block Unit - Make (72)**



**Violet / Blue Block Unit - Make (72)**

5. Sew together (1) 6-1/2" x 6-1/2" Blue Swirl square, (4) Blue / Violet Block Units, (4) Violet / Blue Block Units, (2) 3-1/2" x 3-1/2" Light Blue squares and (2) 3-1/2" x 3-1/2" Light Violet /squares. to make (1) Block A Unit. Repeat to make (9) Block A Units.



**Block A Unit - Make (9)**

5. Sew together (1) 6-1/2" x 6-1/2" Violet Swirl square, (4) Violet / Blue Block Units, (4) Blue / Violet Block Units, (2) 3-1/2" x 3-1/2" Light Violet squares and (2) 3-1/2" x 3-1/2" Light Blue /squares. to make (1) Block B Unit. Repeat to make (9) Block B Units.



**Block B Unit - Make (9)**



# Completing the Quilt

*Refer to the Exploded Quilt Diagram throughout the following steps.*

1. Center and stitch a 5" x 53" Blue Stripe rectangle to the long sides of the Water Garden panel, beginning, ending and securing 1/4" from the corners of the quilt center. Repeat with the 5" x 41" rectangle on the top and bottom. Miter corners using your favorite method, checking to be sure that all corners lie flat. Trim mitered corner seams to 1/4" and press open. Press Blue Stripe seams toward the center.

2. Join (2) Block B Units with (2) Block A Units as shown in diagram below to make (1) Side Border Unit. Repeat to make (2) Side Border Units.



**Side Border Unit - Make (2)**

3. Join (3) Block A Units with (2) Block B Units as shown in diagram below to make (1) Top Border Unit.



**Top Border Unit - Make (1)**

4. Join (3) Block B Units with (2) Block A Units as shown in diagram below to make (1) Bottom Border Unit.



**Bottom Border Unit - Make (1)**

5. Sew the (2) Side Border Units to the left and right sides of the quilt center. Then sew the Top and Bottom Border Units to the top and bottom of the quilt center. Press seams toward the center.

6. Sew the (2) 3-1/2" x 72-1/2" Blue Dot strips to the left and right sides of the quilt center. Then sew the 3-1/2" x 66-1/2" Blue Dot strips to the top and bottom of the quilt center. Press seams toward the center.

7. If using 42" backing fabric, remove the selvage edges from the backing pieces. Join the pieces on the long edges with a 1/2" seam allowance. Press seam open. Trim the edges to make a 82" x 94" backing piece. The seam will be top to bottom on the back of the quilt.

8. Layer the quilt top with the backing and batting pieces. Quilt as desired. Trim batting and backing even with the top.



9. Join the (8) 2-1/4" x WOF binding strips on the short ends with diagonal seams to make a long strip. Press seams in one direction. Press the strip in half along the length with wrong sides together.

10. Bind the quilt edges using your favorite method to complete the quilt.



**Exploded Quilt Diagram**