



Czech Republic

#25

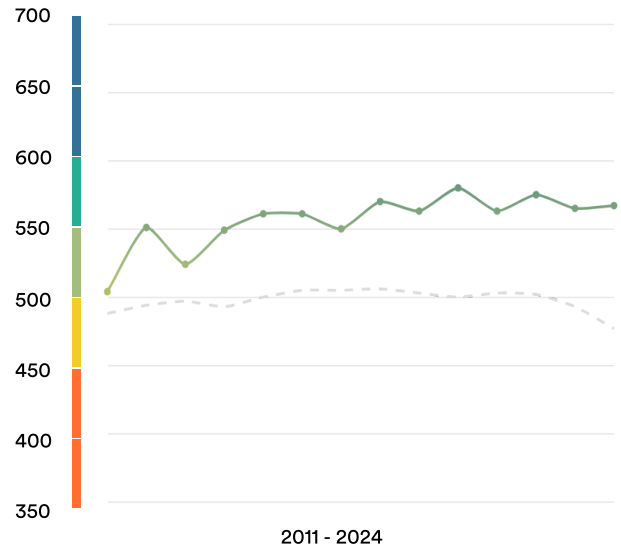
Ranked no. 25 out of 116 countries

EF EPI score: 567 ▲

Global average score: 477

Position in Europe: 21 of 35

Proficiency Trends



Key ■ Very high ■ High ■ Moderate ■ Low ■ Very low

Geographic Scores

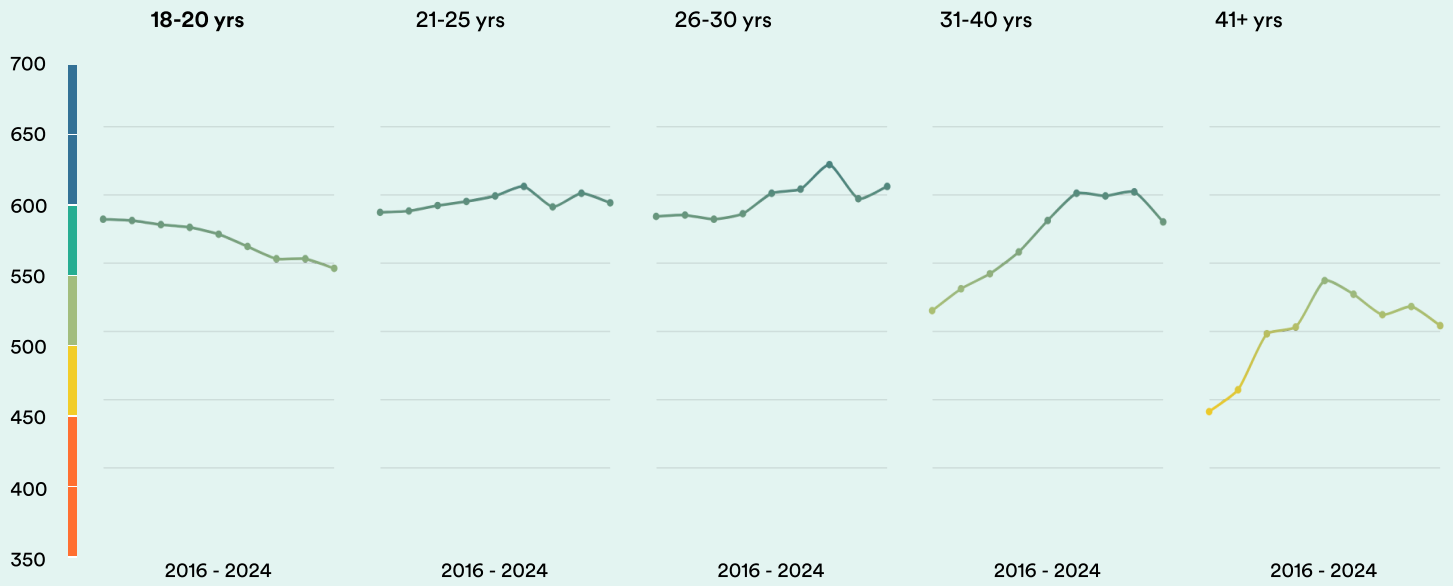
Regions

South Moravian	604
Prague	593
Moravian-Silesian	582
Liberec	564
Central Bohemian	563
Zlín	559
Ústí nad Labem	558
Plzeň	557
Pardubice	556
South Bohemian	552
Olomouc	550
Vysočina	550
Hradec Králové	545

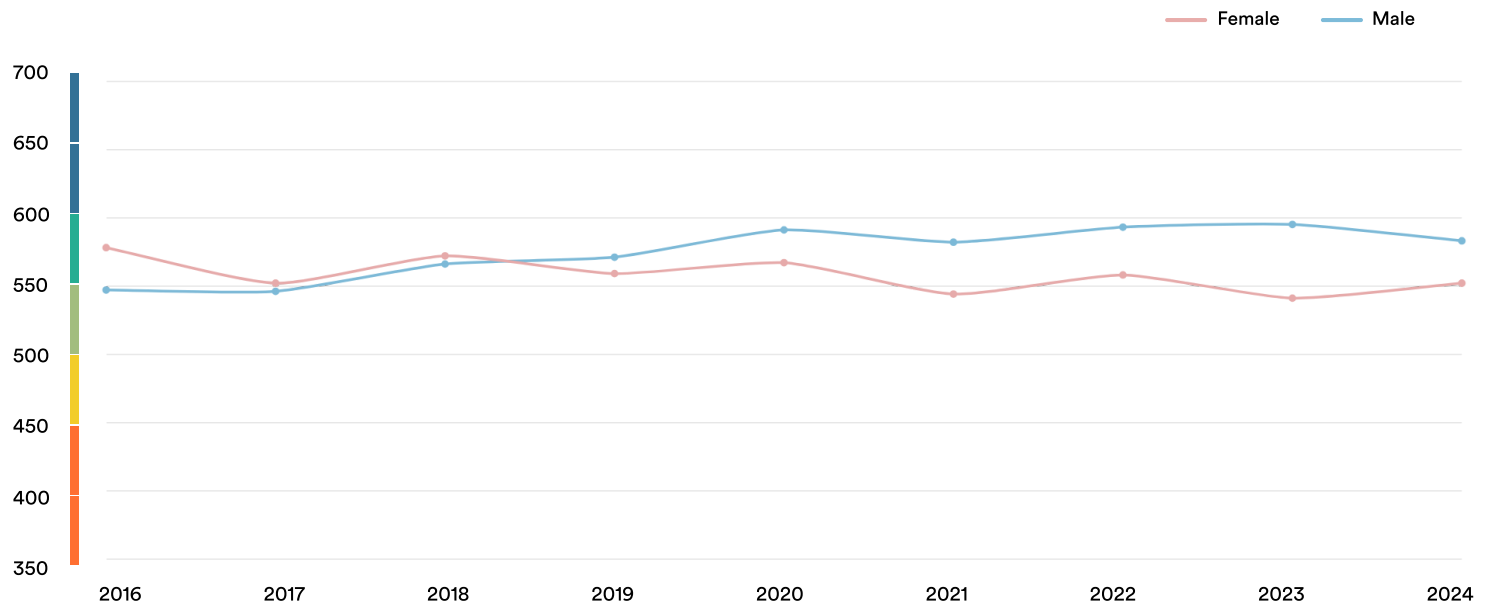
Cities

Brno	614
Prague	596

Age Trends



Gender Trends



About EF EPI

The EF English Proficiency Index (EF EPI) is a ranking of countries and regions by their English skills. This regional fact sheet is a companion to the EF EPI 2024 edition report. To read the full EF EPI report, with the ranking, regional analyses, and demographic trends, visit www.ef.com/epi.

(<https://www.ef.com/epi>) The EF EPI is published by Signum International AG.

© Signum International AG 2024. All rights reserved.

