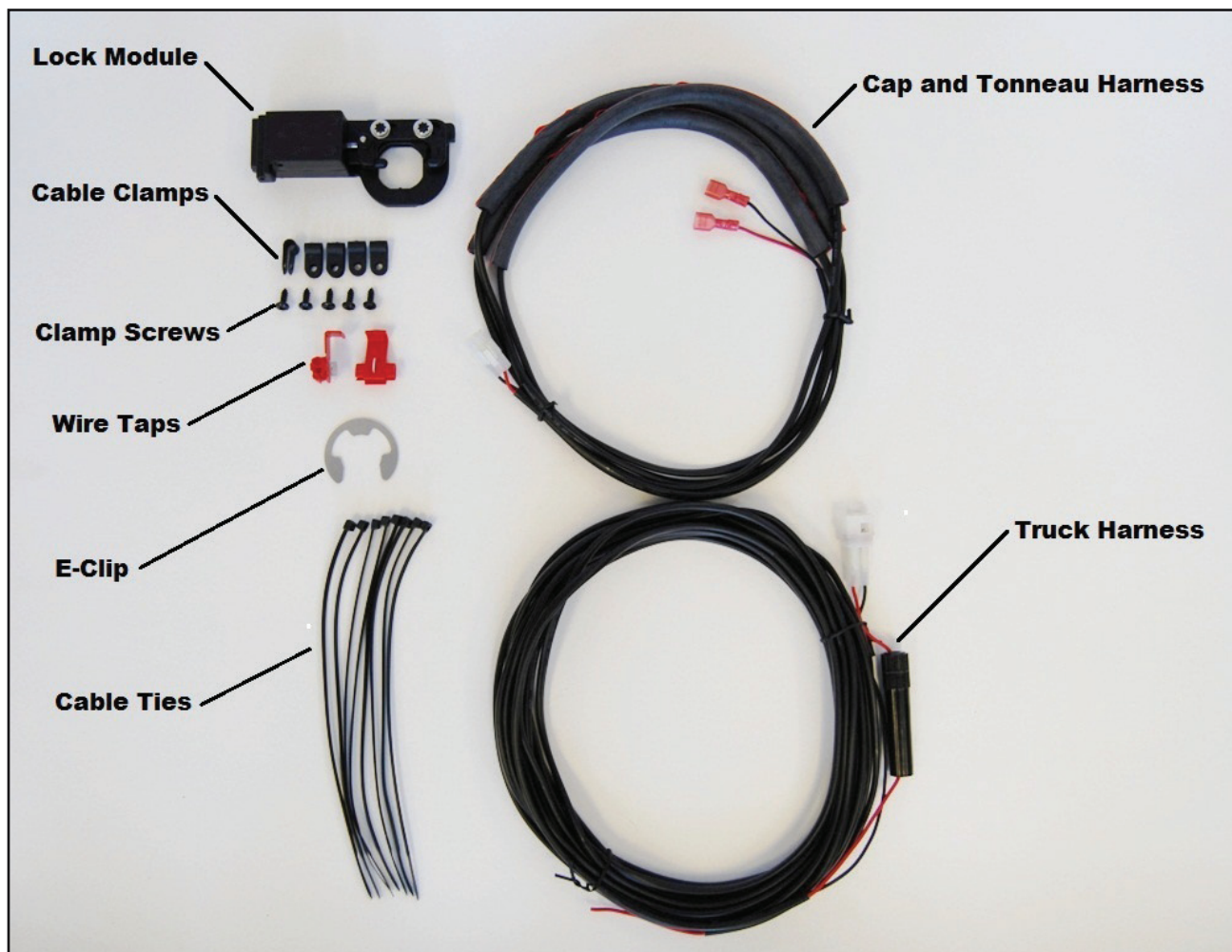


KEYLESS REMOTE ENTRY KIT INSTALLATION INSTRUCTIONS



877.551.LOCK (5625)
301 W. Hintz Rd., Wheeling, IL 60090
www.loadnlocksyste.ms.com | www.illinoislock.com

INCLUDED IN YOUR KIT:

1
Cap and Tonneau Harness

Truck Harness

Lock Module

Lock Module Cover

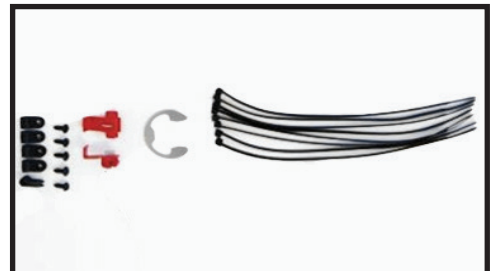
E-Clip

2
Wire Taps

4
Clamp Screws

Cable Clamps

8
Cable Ties



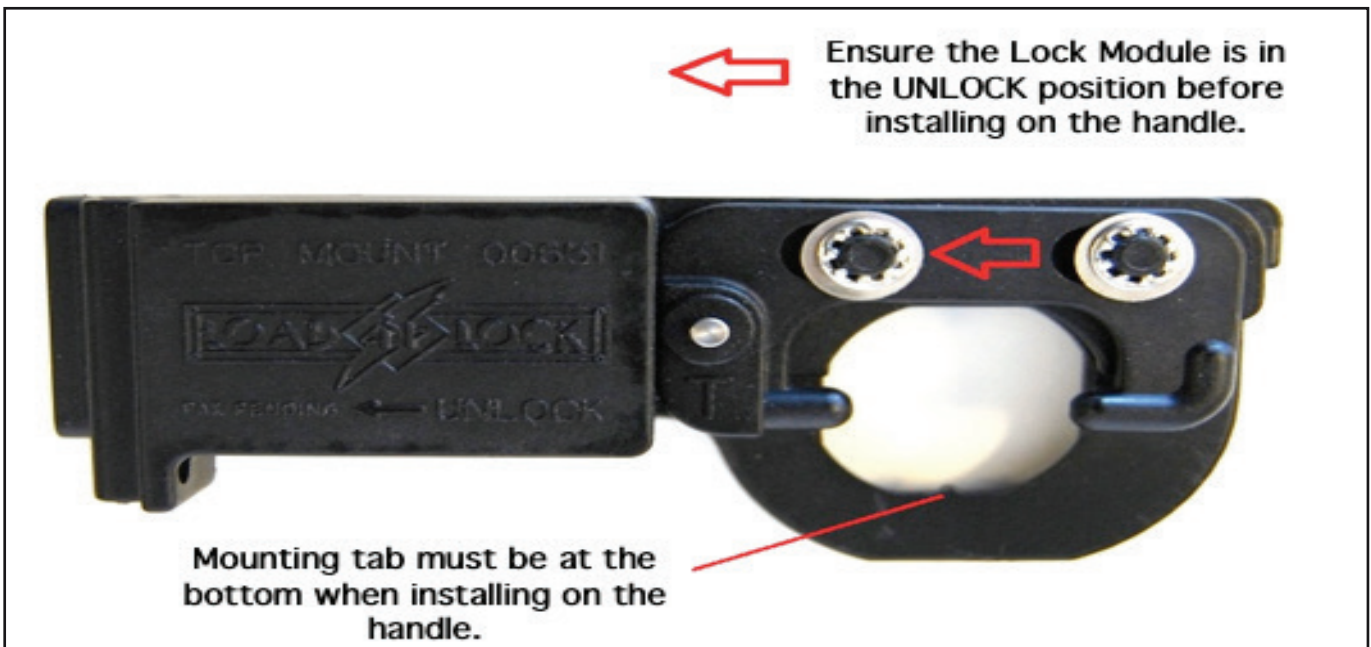
Other equipment required:
Phillips screwdriver
Wrench

STEP 1:

Locate and remove the Emergency Release Handle and Cables with a Phillips screwdriver.

STEP 2:

Locate and remove the black plastic dust cover (if one is installed). It may need to be cut off.

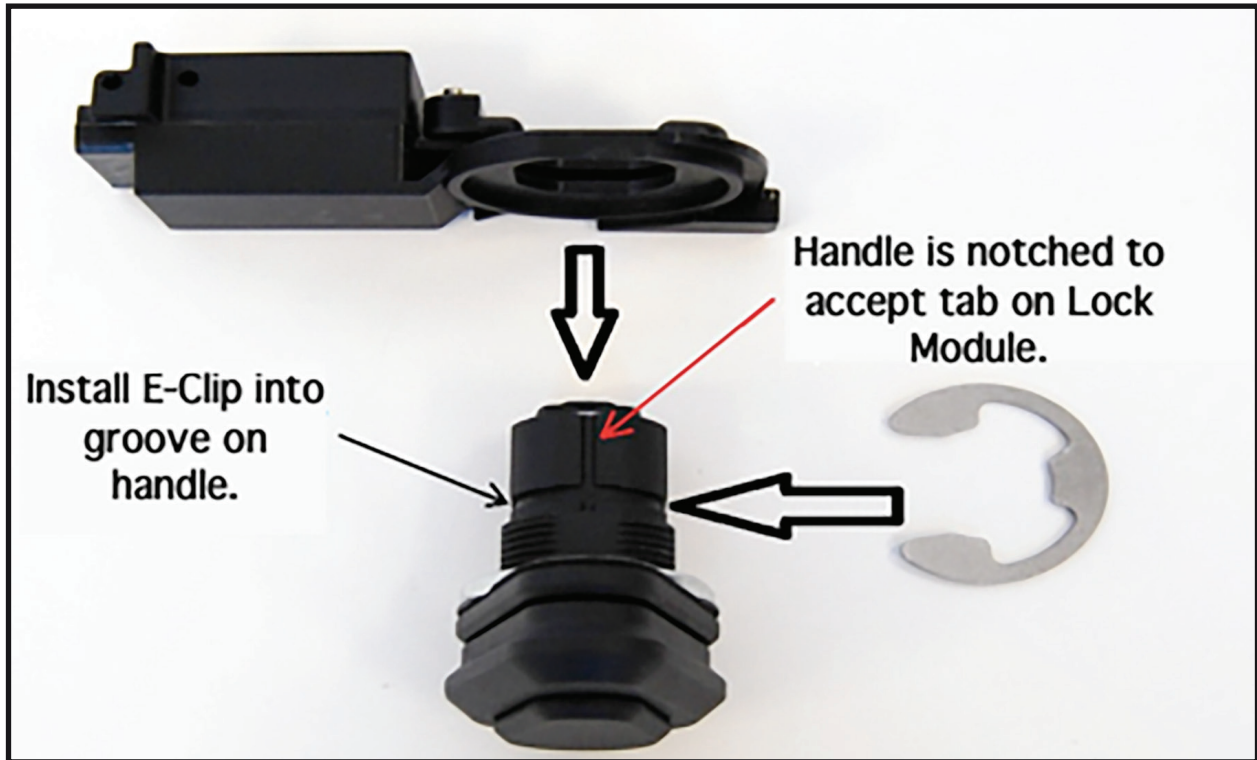


STEP 3:

Install the Lock Module by sliding it over the handle. Ensure the mounting tab is at the bottom and lines up with the notch in the handle when sliding on.

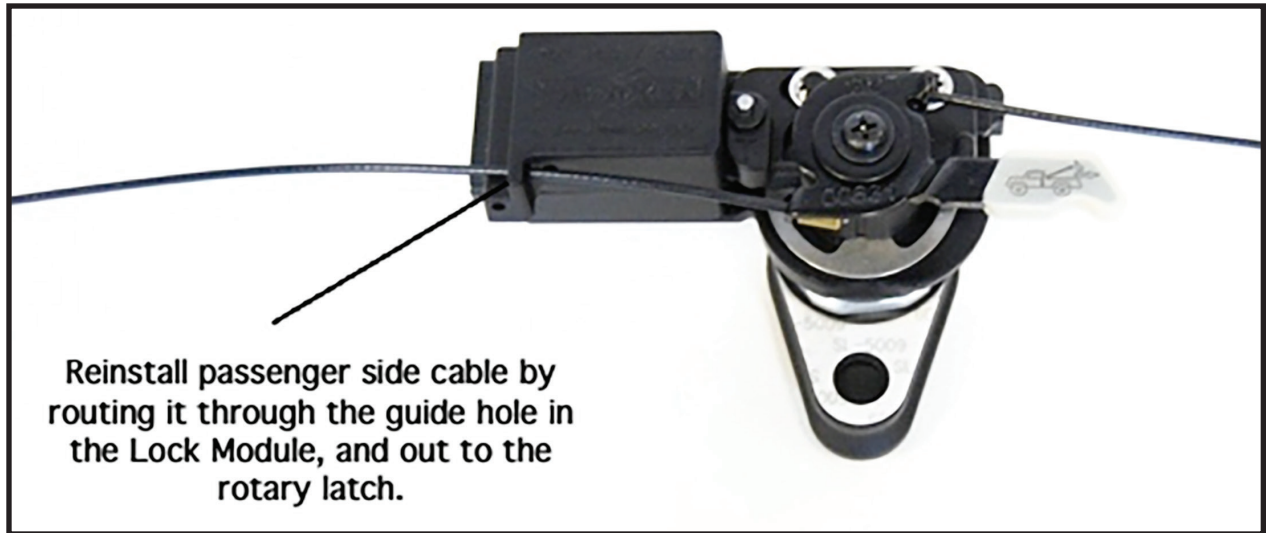
STEP 4:

Install the stainless steel E-Clip into the groove on the handle to hold the Lock Module in place.



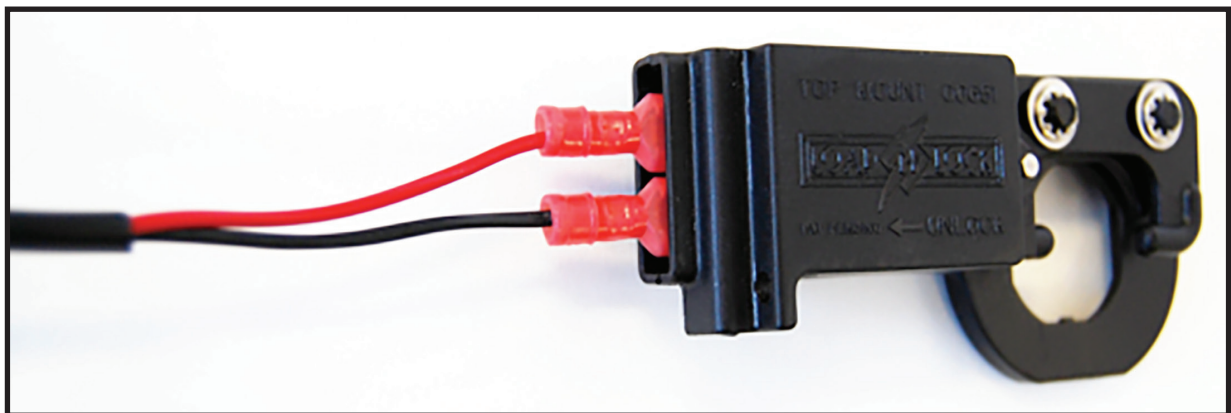
STEP 5:

Reinstall the Emergency Release Handle and Cables to the rotary latch. Route the passenger side cable through the cable guide hole on the Lock Module to the rotary latch.



STEP 6:

Install the Cap and Tonneau Harness: insert the red female spade ends of the harness into the Lock Module.



STEP 7:

For Cap Installations:

Ensure that the rear door glass is clean and dry. Fasten the Cap Harness to the rear door glass using supplied adhesive backed foam tubes already installed on the harness. Remove the adhesive backing and stick it to the glass.

Route the harness down along the bottom and over to the driver's side of the door, then up to the top corner. Ensure that the harness stays in the blacked out area of the glass when possible.

Leave a small loop at the top to allow the door to fully open, then route the harness down the inside of the door frame using supplied Cable Clamps and Clamp Screws.

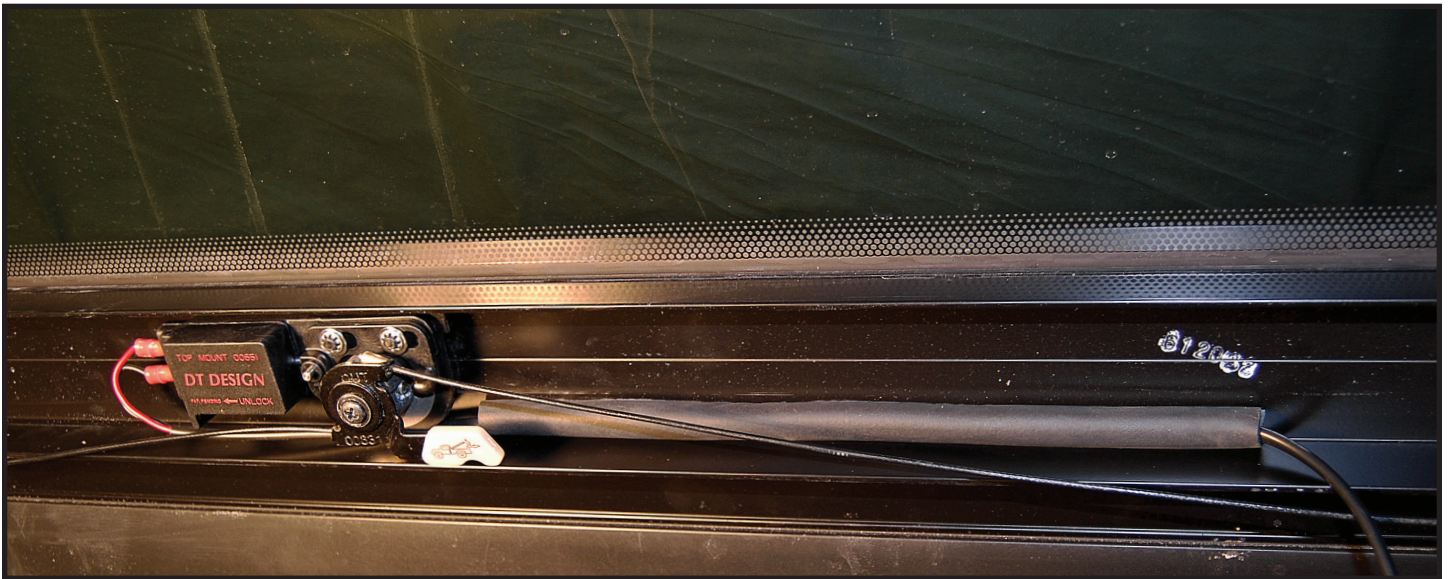


STEP 7:

For Tonneau Installations:

Ensure the surface of the Gas Prop and/or Lift Arm is clean and dry. Route the Tonneau Harness from the Lock Module over to the driver's side Gas Prop or Lift Arm using supplied Cable Clamps and Clamp Screws - **be sure not to screw into the thin portion of the tonneau or the screws could penetrate the outer surface.** Fasten the Tonneau Harness down the Gas Prop or Lift Arm using the supplied foam tubes with adhesive backing.

Then route the harness under the bed rail and connect to the Truck Harness.



STEP 8:

Install the Truck Harness by removing the driver's side tail light. Run the non fused end of the harness up under the bed rail, through the back of the tail light compartment, down to the truck frame following the factory wiring harness to the front of the truck. Run the harness up from the frame, through the firewall and into the driver's side kick panel. Fasten the harness to the truck securely using the supplied Cable Ties as needed.



STEP 9:

Using the supplied Vehicle Wiring Chart locate your make and model to determine which two wires to tie into. Confirm the wires with a test light by grounding the test light, probing each wire, and pushing lock and unlock on the driver's side door. The lock wire should light the test light when lock is pushed on the door lock switch, and the unlock wire should light the test light when unlock is pushed on the door lock switch. On most models, you can also locate the lock and unlock wire in the rubber boot that runs in between the driver's side door and the cab of the truck. Slide the boot back from the truck and test the wires. Once the wires are located, tap the correct wires using the supplied red Wire Taps. Test the lock, if the lock works opposite of the truck, switch the wires around, this will change the polarity.

