

Annual Report



LONG BEACH STATE UNIVERSITY
**CENTER FOR LATINO
COMMUNITY HEALTH**
EVALUATION & LEADERSHIP TRAINING

2023 - 2024



Mission

To improve, promote, and advocate for the health, culture, and well-being of diverse Latino/Hispanic communities.

Vision

To improve health, educational, and social equity among the Latino communities with whom we work and serve.

Values

- We are driven to action by our community-centered mission.
- We embody an attitude of community service.
- We operate with integrity and inclusiveness.
- We foster leadership and empowerment.
- We value our grass-roots underpinnings.
- We are accountable to the communities we serve.
- We uphold the community-driven missions of UnidosUS and CSULB.
- We acknowledge, appreciate, and celebrate the cultures, resiliency, insights, and contributions of Latino/Hispanic families and communities.



ABOUT US

The California State University Long Beach (CSULB) Center for Latino Community Health, Evaluation, and Leadership Training (hereafter Center) started as a partnership between UnidosUS (formerly known as the National Council of La Raza [NCLR]) and CSULB. The CSULB Center was established in 2005 by Dr. Britt Rios-Ellis through a congressional earmark led by then Congresswomen Hilda Solis. The Center is part of the Department of Health Science in the College of Health and Human Services. The Center has three pillars of work which are highlighted in our descriptive name.

Community Health

The Center's research and program areas embody the use of community based participatory research methods – an academic model that promotes community empowerment, learning, and participation in society. Our research promotes faculty excellence through research, prepares students for success, expands the self-efficacy of community members involved in our projects, and creates collaborative partnerships aimed at impacting the delivery and messaging of Latino health through culturally and linguistically appropriate methods.

Evaluation

We provide culturally and linguistically appropriate evaluation services to community-based organizations and health entities such as federally qualified health centers and local health departments. These services include research and evaluation design; quantitative and qualitative instrument development; training for data collection staff (in person or via webinar); technical assistance; data processing and cleaning; data analysis; and report writing. Funders include both local and national organizations.

Leadership Training

We are committed to student success and the academic and professional preparation of future generations. We collaborate across departments and colleges to gain funding to provide exemplary student success programs. Each year, we provide internship opportunities and fellowships to support students from CSULB and other institutions. In collaboration with faculty and staff across the campus, we provide student trainings and workshops to support academic and professional development.



Table of Contents

Year at a Glance	6
Supporting Student Success at The Beach	7
Current Projects	
Eat, Play Go!	9
ANDALE Latino Research Training Program	10
Leveraging Interdisciplinary Nutritional Knowledge (LINK).....	11
Harvesting Healthy Habits in Long Beach	13
Evaluation Contracts	
Comprando Rico y Sano Evaluation.....	15
Long Beach Activating Safe Communities (LB ASC).....	16
Project CIELO.....	17
Fiscal Data	18
Publications and Presentations	19
Acknowledgements	22



AT A GLANCE

Community Members Engaged in Programming



261 youth

217 adults

Students Trained and Mentored



12 Graduate Students

39 Undergraduate Students



\$330,254

awarded in scholarship funding



31+

academic and professional development trainings and workshops



16

student co-authored abstracts and scientific posters



14

students traveled to a professional conference



6 active grants and contracts

\$992,608 in funding



Supporting Student Success @ The Beach

Who we serve and train?

- Undergraduate and graduate students pursuing a degree in the fields of nutrition, health science, kinesiology, healthcare administration, sociology, social work, and other related health fields.
- Underrepresented students (e.g., first-generation, financial need, members of racial/ethnic minority groups, with a disability).
- Undergraduate and graduate students interested in working to improve the health and well-being of the Latino community.

How we serve and train?

- Competency-based trainings
- Professional development
- Research experience
- Experiential learning
- Mentorship
- Paid fellowship opportunities
- Conference travel opportunities



All Staff Meeting – September 2023



Grad Celebration – May 2024



Student Training Topics 2023 - 2024

Latino Nutrition & Chronic Disease Prevention

- Introduction to the Importance of Latino Nutrition
- Nutrition-Related Chronic Diseases Affecting Latinos
- Nutrition for Health Professionals
- Pathophysiology of Nutrition

Culturally Responsive Nutrition Education

- Developing Interventions and Programs
- Social and Cultural Aspects of Food
- Culturally Responsive Nutrition Education Programs
- Motivational Interviewing

Community-Based Participatory Research

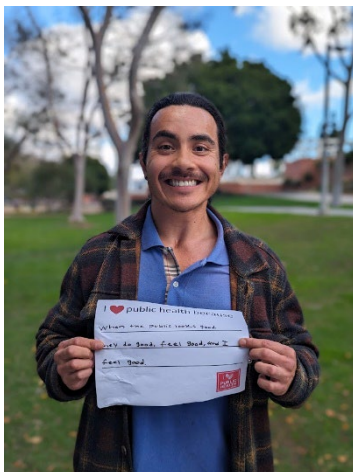
- Community-Based Participatory Research Overview
- *Promotores de Salud* (Community Health Workers) History
- Community-Based Intervention Implementation

Research Methods

- Introduction to Mixed Methods Research
- Qualitative Methods
- Quantitative Methods
- Biopsychosocial Research
- Understanding Scientific Literature
- Responsible and Ethical Conduct
- Informed Consent Procedures
- Anthropometric Measurements
- Data Interviewing Techniques
- Data Entry and Management
- Follow-up calls Data Collection Procedures

Professional Development

- Culture Capital: Strengths & Values
- Professional Etiquette
- Job and Salary Negotiation
- Graduate School Planning
- Resumes and CVs
- Elevator Speech
- Goal Setting & Campus Connection
- Abstract development
- Scientific poster development





Current Projects



Project Name: Eat, Play, Go! Transdisciplinary Obesity Prevention for Latino Families

Funding Agency: United States Department of Agriculture - NIFA Award #2021-69015-33433

Project Staff: Dr. Melawhy Garcia (Principal Investigator), Patricia Trinidad, MPH (Project Manager), Brenda Guerrero (Community Health Worker)


Purpose: To address the disproportionate rates of obesity among Latino youth ages 10 – 13 years by developing and implementing a youth-focused and family-based intervention in Long Beach. The intervention focuses on physical activity, fruit and vegetable consumption, and strengthening communities with behaviors that encourage healthy lifestyles.

Intervention:

- Four, 2-hour weekly group sessions (Weeks 1-4) with virtual grocery store tour, physical activity, and nutrition label-reading activities
- Two, 15-minute telephone booster sessions (Weeks 8 and 12)
- Text Messages to provide reinforcement of the Eat, Play, Go! intervention content




Research Fellows



Master in Psychological Research

Mario Rodriguez



Nutrition & Dietetics

Yeraldine Polo

Project Milestones



11 research fellows and 39 interns received training and mentoring



\$29,448 awarded in scholarship funding this fiscal year



159 families and 187 children completed the intervention



Project Name: ÁNDALE Latino Research Training Program

Funding Agency: United States Department of Agriculture
NIFA Award #2020-67037-30663



Project Staff: Dr. Melawhy Garcia (Principal Investigator),
Yesenia Sifuentes (Project Coordinator)

Purpose: To train fifty (50) undergraduate students in Latino nutrition and chronic disease prevention, enhance their professional development, and engage them in research to better prepare them to enter graduate school or the workforce.

Project Milestones



53 undergraduate students participated across four cohorts



\$79,378.42 in scholarship funding awarded this fiscal year



8 scholars submitted an abstract and/or presented at a conference



10 scholars attended a professional conference

2023 - 2024 ÁNDALE Scholars



Alexis Pope
Nutrition & Dietetics



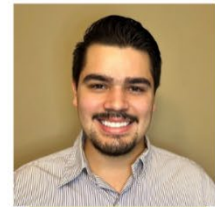
Andrea Rodriguez
Health Science



Cindy Meyer
Health Science



Giovanni Honore
Kinesiology



Jeremy Burrola-Woodard
Health Science



Marco Reyes
Health Science



Marlene Rodriguez
Nutrition & Dietetics



Sebastian Dang
Kinesiology



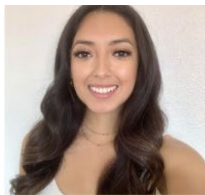
Stephanie Orjuela
Kinesiology



Valerie Mendoza
Healthcare Administration



Quynh Sa
Health Science



Yadira Buenrosto
Health Science



Yeraldine Polo
Nutrition & Dietetics



Yanel Galindo
Psychology

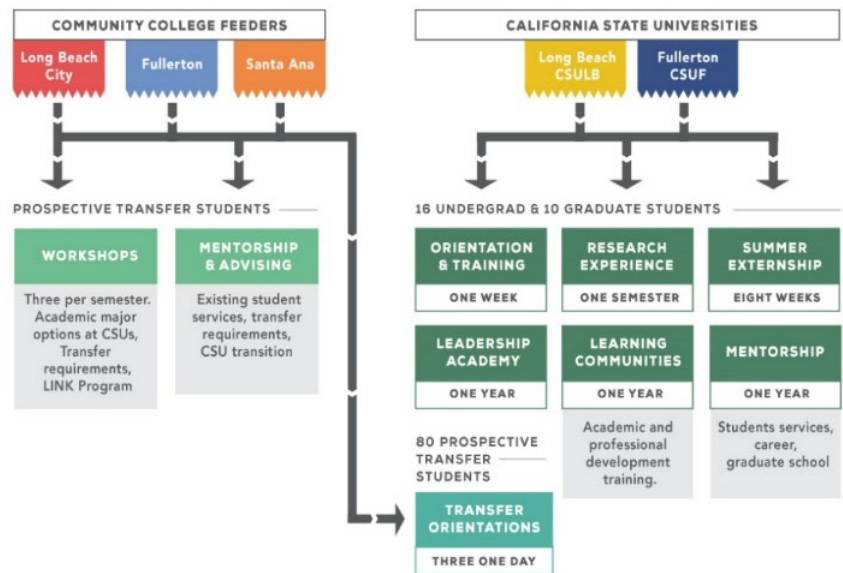


Project Name: Leveraging Interdisciplinary Nutritional Knowledge

Funding Agency: United States Department of Agriculture-NIFA (August 2021-2025) Award # 2021-77040-34904

Project Staff: CSULB - Dr. Melawhy Garcia (PI), Yesenia Sifuentes (Project Coordinator), CSUF – Dr. Lilia Espinoza (Co-PI)

The LINK Program is a collaboration between five Hispanic-Serving Institutions (HSIs) in Southern California: two 4-year universities, California State University (CSU) Long Beach and CSU Fullerton, and three 2-year community colleges (CC) including Fullerton, Long Beach City, and Santa Ana. The LINK Program promotes the success of 26 underrepresented students in the food and human sciences professional and scientific workforce emphasizing Latino nutrition through outreach, mentoring, education, support services, research, and professional internships with community partners.



Project Milestones



15 students from CSULB and CSUF were selected as the second cohort



\$108,851 in scholarship funding awarded this fiscal year



21 workshops facilitated with collaborating Community College partners



442 community college students reached





2023 – 2024 LINK Scholars

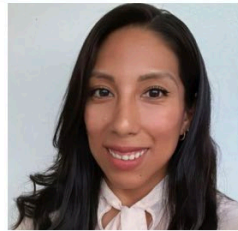
Undergraduate Scholars



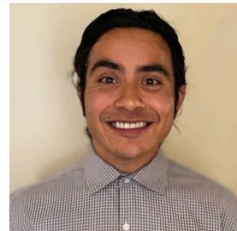
Maria Cutino, CSULB
Health Science



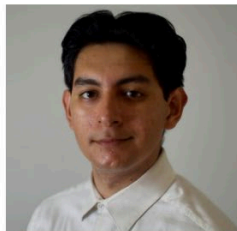
Mariana Martinez, CSULB
Kinesiology



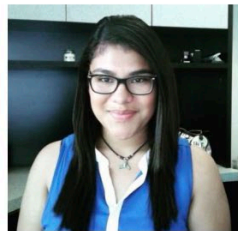
Nancy Lazo, CSULB
Nutrition & Dietetics



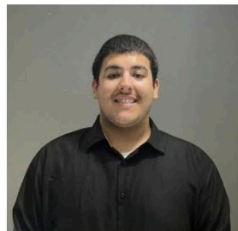
Rodrigo Parra, CSULB
Nutrition & Dietetics



Marion Zelaya, CSULB
Nutrition & Dietetics



Wendy Fuentes, CSUF
Kinesiology



Miguel Gonzalez, CSUF
Kinesiology



Juan Hernandez, CSUF
Kinesiology

Graduate Scholars



Melanie Gomez Flores
Masters of Public Health
CSULB



Melissa Pompa
Masters of Public Health
CSULB



Selene Tovar
Masters of Public Health
CSULB



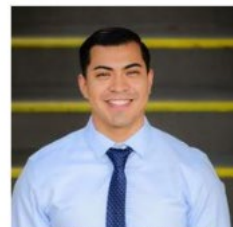
Channel Ruiz
Masters of Public Health
CSULB



Ivy Gonzalez
Masters of Public Health
CSUF



Martina Ricabar
Masters in Kinesiology
CSUF

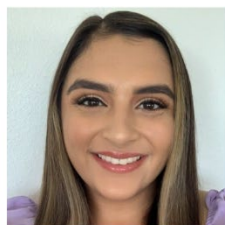


Christopher Xolocotzi
Masters in Kinesiology
CSUF



Kennedy Retamoza
Masters in Kinesiology
CSUF

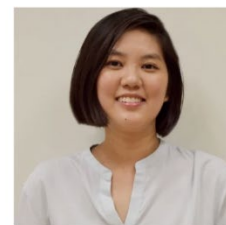
LINK Peer Ambassadors



Andrea Rodriguez
CSULB
Health Science



Shayna Guerra
CSULB
Health Science



Pauline Lim
CSUF
Public Health



Project Name: Harvesting Healthy Habits in Long Beach

Funding Agency: United States Department of Agriculture-NIFA (January 2023-2026) Award #2023-69015-39407

Project Staff: Dr. Melawhy Garcia (PI); Natalia Gatdula, MPH (Co-I); Andrea Luna, MPH (Research Coordinator)

Purpose: Provide undergraduate and graduate students with a comprehensive research training experience that includes hands-on experiential learning while developing and implementing an intervention that aims to improve eating patterns and healthy lifestyles to reduce the risk for chronic diseases among underserved children in grades 3 to 5 and their families.

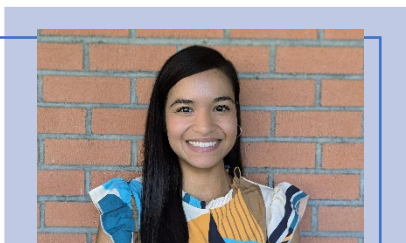
Collaborators: Puente Latino Association

Intervention:

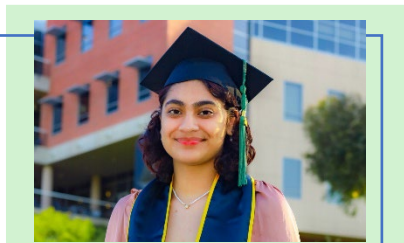
- **Children:** Four, 2-hour weekly group sessions (Weeks 1-4) with three components: nutrition education, food demonstration, gardening activities.
- **Parent/Caregiver:** Two, 2-hour groups sessions (Weeks 1 and 4) of nutrition education



Graduate Research Fellows:



Beatriz Tovar, Nutrition & Dietetics



Pamela Martinez, Public Health



Stephanie Perez, Public Health



Undergraduate Research Fellows:



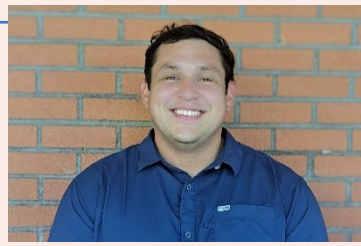
Alexis Pope, Nutrition & Dietetics



Stephanie Soto, Health Science



Lesly Joj-Escun, Healthcare Administration



Manuel Marroquin, Nutrition & Dietetics

Project Milestones:



\$112,576.60 in scholarship funding awarded this fiscal



9 student poster presentations



6 students (Cohort 1) completed their fellowship



5 students recruited and trained for Cohort 2 of Research Fellows



34 3rd – 5th graders participated in the program



84 community members participated in the program



Contracts

Project Name: Comprando Rico y Sano Evaluation

Funder: Walmart Foundation / UnidosUS

Funding period: June 2022- November 2023



Purpose: To assess the effectiveness of the *Comprando Rico y Sano* (translated as “Buying Healthy and Flavorful Foods”) program. *Comprando Rico y Sano* is a *promotores de salud*-led program developed by UnidosUS Health and implemented at 27 sites across the U.S. The program had several goals and activities:

<p>Provide nutrition education to Latino communities to instill healthy shopping and eating habits</p>	<p>Provide enrollment assistance for the Supplemental Nutrition Assistance Program (SNAP) and other federal assistance programs</p>	<p>Increase food access and service delivery to reduce hunger and food insecurity</p>
--	---	---

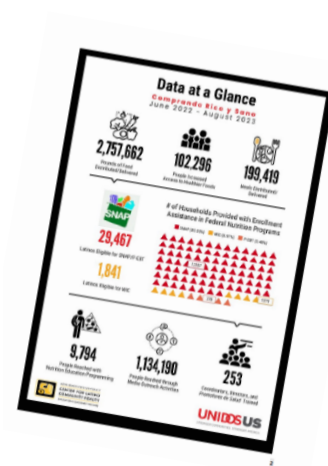
Center’s role: Develop evaluation plan and evaluation instruments; data entry, tracking, and management; evaluation training for community health workers, collect follow-up telephone data from community member participants; data analysis and reporting.

Project milestones:

<p>257 calls for 3-month follow-up assessment, yielding 63 participants.</p>	<p>Tracking and data entry for 843 pre-and post-surveys of 25 sites across the U.S.</p>	<p>Analysis and written final report.</p>
--	---	---



Table of Contents	3
Executive Summary	4
Comprando Rico y Sano Evaluation	4
Walmart Foundation Metrics	5
Pounds of Food	5
Meals	6
Supplemental Nutrition Assistance Program (SNAP)	6
Special Supplemental Nutrition Program for Women, Infants, Children (WIC)	7
People Reached Post Access Metrics	7
Supporting Healthy Food Choices	8
People Reached Nutrition Education Metrics	10
Comprando Rico y Sano Grant Outputs	11
Government and Private Nutrition Assistance Programs	11
Food Access and Service Delivery	11
Meals Outreach Activities	11
Supplemental Training	12
Nutrition Education	16
Nutrition Education	16
Individualized Supplemental Training	23
Supplemental Training	24
September 2022 Training: Online Structure & Content Summary	24
September 2022 Training: Train-the-Trainer Guide and Evaluation	26
December 2022 Training: Revised 2022 Response & Content Evaluation	30
Supplemental Training	46
Learning Session	50
Discussion	57
Appendix	59





Project Name: Long Beach Activating Safe Communities

Funder: City of Long Beach Department of Health and Human Services



Funding period: February 2021 - December 2023

Purpose: LB Activating Safe Communities (LB ASC) was an effort to create and sustain a city where everyone lives in safe communities, attends safe schools, and has contributing neighbors connected to their community.

Center's role: Develop evaluation plan, data collection strategies, and steps necessary to evaluate the LB ASC program and determine the factors that contribute to reducing gun-related violence in the Washington Neighborhood. A comprehensive evaluation plan was developed to determine the success of the program and related activities. The evaluation was data-driven and based on both process and outcome measures using a mixed-methods approach.

The goals were to:

Establish a coordinated citywide gun violence response system.

Reduce the incidence of firearm and aggravated assaults by activating the Washington Neighborhood through a comprehensive street outreach model.

Implement and intervention model targeting youth and emerging adults most at risk for engaging in or becoming victims of violence.



Project milestones:

Research staff conducted (3) evaluation trainings and provided technical support to new subcontractor staff.

Research staff conducted focus groups with intervention participants and conducted qualitative analysis.

Final evaluation report was presented to the City of Long Beach in December 2023



Project Name: Culturally Informed Enhanced Learning Opportunities
(CIELO) for SLPs and ECSE Project Evaluation

Funder: California State University, Los Angeles

Funding period: 10/01/2023 – 09/30/2024



Purpose: CIELO aims to improve the diversity and quality of bilingual applicants to the Early Childhood Special Education and Speech Language Pathology programs through the development of recruitment materials and increased community partnerships. Moreover, it aims to improve interdisciplinary practices leading to improved student and family outcomes through implementation of rigorous evidence-based programs that meet CTC, NAEYC, CAA/ASHA/ and CEC-DEC standards.

Center's role: Identify and select student assessment instruments to be used in the evaluation. Monitor student data collection, conduct data cleaning and analysis for reporting requirements.

Project milestones:

- Finalized data collection timeline, methods, and instruments



July 2023 – June 2024 Fiscal Data

Grants and Contracts (Continued from previous-year funding)

Name of Project	Funder	Amount	Award Start/End Date
ANDALE Latino Research Training Program	United States Department of Agriculture	\$104,368.40	4/15/2020 - 4/14/2025
Leveraging Interdisciplinary Nutritional Knowledge	United States Department of Agriculture	\$261,177.60	8/1/2021 - 7/31/2025
Harvesting Healthy Habits in Long Beach	United States Department of Agriculture	\$228,083.90	1/15/2023 - 1/14/2026
Eat, Play, Go!	United States Department of Agriculture	\$234,980.66	11/15/2020 - 11/14/2024
Comprando Rico y Sano Program Evaluation	UnidosUS	\$149,998.00	6/1/2022 - 11/30/2023
	Subtotal	\$978,608.56	

New Grants and Contracts (initiated between July 1, 2023 - June 30, 2024)

Name of Project	Funder	Amount	Award End Date
Project CIELO	Department of Education via CSULA	\$14,000	09/30/2024
	Subtotal:	\$14,000	



Publications (1)

Alvarado, C., Nguyen-Rodriguez, S.T., Frank, G.C., Garcia, M. & Gatdula, N. (2024) Influence of home language use on association between parent education and child adiposity in Latino families. *Journal of Racial and Ethnic Health Disparities*, doi.org/10.1007/s40615-024-01935-z

Presentations (22)

*Student Author

*Cruz, F., Trinidad, P., & Garcia, M. (2024). *Does Latino parents' praise for their children's health behaviors differ based on gender?* Abstract and poster presentation at the CSULB Symposium at Week of Research and Scholarly Activity, Long Beach, CA.

Espinoza, L., Garcia, M., Nguyen-Rodriguez, S., Gatdula, N., Tenorio, Y., Sifuentes, Y. (2024). *Leveraging Interdisciplinary Nutritional Knowledge (LINK) Scholars Training Program: preparing the public health workforce in Latino chronic disease prevention.* Abstract accepted for poster presentation at the American Public Health Association Conference.

Gatdula, N., & Garcia, M. (2024) *Research training and mentoring to cultivate the next generation of public health professionals to address Latino health disparities.* [Poster Presentation] National Conference of Undergraduate Research, Long Beach, CA, April 2024

Garcia, M. Espinoza, L., Nguyen-Rodriguez, S., Gatdula, N., Sifuentes, Y., Tenorio, Y. (2024, April 9). *Leveraging Interdisciplinary Nutritional Knowledge (LINK) Scholars Program: Preparing underrepresented students for the food and human sciences workforce.* [Poster Presentation] National Conference on Undergraduate Research, Long Beach, CA.

Garcia, M., Trinidad, P., Luna, A., *Velasquez, G., *Grijalva, E., & Rascon, M. (2023, July). *Eat, Play, Go! Integrated Transdisciplinary Research, Education, and Extension Project to Prevent Latino Youth Obesity.* Abstract and poster presentation at Society Nutrition Education and Behavior Conference, Washington DC.

Garcia, M., Trinidad, P., *Polo, Y., *Rodriguez, M., Mendoza, J. (2024, June). *Preliminary results of Eat, Play, Go! integrated transdisciplinary research, education, and extension project to prevent Latino youth obesity.* Abstract and poster presentation at Society Nutrition Education and Behavior Conference, TN.

*Joj-Escun, L., *Perez Martinez, S., Gatdula, N., Garcia, M. (2024, April 10). *Self-efficacy for food security and intention to increase fruit and vegetable intake among Hispanics/Latinos in the U.S.* Abstract and poster presentation at the National Conference on Undergraduate Research, Long Beach, CA.

*Marroquin, M., Gatdula, N., Garcia, M. (2024). *The association between self-efficacy for food security and the consumption of home-prepared meals among Latinx in the U.S.* Abstract and poster presentation at the CSULB Symposium at Week of Research and Scholarly Activity, Long Beach, CA.



- Mendoza, J., Trinidad, P., Garcia, M. (2024). *The relationship between physical activity perceptions and children's physical activity levels in Eat, Play, Go! obesity prevention study*. Abstract and poster presentation at the CSULB Symposium at Week of Research and Scholarly Activity, Long Beach, CA.
- Orihuela, D., Carrillo, E., Gepp, A., & Garcia, M. (2023) *A human centered approach to mitigate food insecurity among Latinos during a public health emergency*. American Public Health Association Conference, GA, United States.
- *Perez Martinez, S., Gatdula, N., Garcia, M. (2024). *The association between housing type and access to COVID-19 vaccination and testing in the Latinx population of Long Beach*. Abstract and poster presentation at the CSULB Symposium at Week of Research and Scholarly Activity, Long Beach, CA.
- *Polo, Y., Trinidad, P., Garcia, M. (2024). *What is the association of zip code and Latino childhood overweight in Long Beach?* Abstract and poster presentation at the CSULB Symposium at Week of Research and Scholarly Activity, Long Beach, CA.
- *Pope, A, *Polo, Y., Trinidad, P., & Garcia, M. (2024) *Can parenting feeding practices influence fruit and vegetable consumption among Latino children?* [Poster Presentation] 11th Annual Research Symposium, Diabetes and Obesity Research Institute, Los Angeles, CA, United States.
- *Ramirez, M., Trinidad, P., Garcia, M. (2024). *Is there an association between Latino children's health insurance status and their BMI Percentile?* Abstract and poster presentation at the CSULB Symposium at Week of Research and Scholarly Activity, Long Beach, CA.
- *Rodriguez, M., Trinidad, P., Garcia, M. (2024). *A comparison of food intake and activity levels between children classified as normal and overweight*. Abstract and poster presentation at the CSULB Symposium at Week of Research and Scholarly Activity, Long Beach, CA.
- *Ruiz, C., Gatdula, N., Garcia, M. (2024). *The association between immigration status, medical insurance, and perception of physical and mental health among Hispanic/Latinx in Long Beach*. Abstract and poster presentation at the CSULB Symposium at Week of Research and Scholarly Activity, Long Beach, CA.
- Sanchez, K., Gatdula, N. & Garcia, M. (2023) *Influence of nutrition label literacy on child body mass index percentile among Latino families*. [Poster Presentation] American Public Health Association Conference, GA, United States.
- *Soto, S., Gatdula, N., Garcia, M. (2024). *What is the influence of language on perception of availability of services and resources for priority health issues among Hispanic/Latino adults in the Long Beach community?* Abstract and poster presentation at the CSULB Symposium at Week of Research and Scholarly Activity, Long Beach, CA.
- *Tovar, B., Gatdula, N., Luna, A., Garcia, M. (2024). *The association of time living in the U.S. and household structure and food insecurity among foreign-born Hispanic/Latinos*. Abstract and poster presentation at the CSULB Symposium at Week of Research and Scholarly Activity, Long Beach, CA.
- *Tovar, S., Gatdula, N., Garcia, M. (2024). *The influence of the home environment on physical activity and sedentary time among Latino children*. Abstract and poster presentation at the CSULB Symposium at Week of Research and Scholarly Activity, Long Beach, CA.



Trinidad, P., *Martinez, P., *Velazquez, G., Garcia, M. (2023, November) *Preliminary changes in Latino children's BMI and consumption of unhealthy snack foods in Eat, Play, Go! Obesity prevention study*. Abstract and poster presentation at the American Public Health Association Conference, GA.

*Zelaya, M., Gatlula, N., Garcia, M. (2024). *The influence of parenting strategies on sedentary time among Latino children*. Abstract and poster presentation at the National Conference on Undergraduate Research, Long Beach, CA.



Acknowledgments

We would like to express our deepest gratitude to all the undergraduate and graduate students, staff, faculty, and community collaborators and community members who allowed us to continue working towards our mission and were involved in our various initiatives through survey and curriculum development, intervention implementation, health education, student training and mentorship, community outreach and recruitment, data collection administration, grant writing, presentations, data analysis, evaluation, and reporting.

Graduate Students:

- Beatriz Tovar, HHH Fellow
- Channel Ruiz, LINK Scholar
- Cynthia Romo, EPG Fellow
- Ivy Gonzalez, HHH Intern
- Juanita Amaro Barrios, EPG Fellow
- Melanie Gomez Flores, LINK Scholar
- Melissa Pompa, LINK Scholar
- Mario Rodriguez, EPG Fellow
- Pamela Martinez, HHH Fellow
- Savannah Romero, EPG/HHH Intern
- Selene Tovar, LINK Scholar
- Stephanie Perez Martinez, HHH Fellow

Undergraduate Students:

- Adrianna Alfaro, EPG Intern
- Alexis Pope, ÁNDALE Scholar
- Andrea Felix, EPG Intern
- Andrea Rodriguez, ÁNDALE Scholar
- Ariana Aguilar, EPG Intern
- Cindy Meyer, ÁNDALE Scholar
- Daniel Perez, EPG Intern
- Diana Gamino Verdín, EPG Intern
- Fatima Cruz, EPG Intern
- Giovanni Honore, ÁNDALE Scholar
- Jennifer Perez, EPG Intern

Undergraduate Students Cont.:

- Jeremy Burrola-Woodard, ÁNDALE Scholar
- Jesus Mendoza, EPG Intern
- Keith Aguilar, EPG Intern
- Lesly Joj-Escun, HHH Fellow
- Manuel Marroquin, HHH Fellow
- Marco Reyes, ÁNDALE Scholar
- Maria Cutino, LINK Scholar
- Maria Ramirez, EPG Intern
- Mariana Martinez, LINK Scholar
- Marlene Rodriguez, ÁNDALE Scholar
- Marlon Zelaya, LINK Scholar
- Nancy Lazo, LINK Scholar
- Nancy Tovar, EPG Intern
- Quynh Sa, ÁNDALE Scholar
- Rodrigo Parra, LINK Scholar
- Sebastian Dang, ÁNDALE Scholar
- Stephanie Ceja, EPG Intern
- Stephanie Orjuela, ÁNDALE Scholar
- Stephanie Soto, HHH Fellow
- Valeria Valencia, Center Intern
- Valerie Mendoza, ÁNDALE Scholar
- Vanessa Sagredo, EPG Intern
- Yadira Buenrostro, ÁNDALE Scholar
- Yanel Galindo, ÁNDALE Scholar
- Yeraldine Polo, ÁNDALE Scholar



CSULB Faculty Collaborators:

Amber Johnson, Associate Professor, Health Science
Guido Urizar, Professor, Psychology
Iveris Martinez, Archstone-Endowed Chair & Director of the Center for Successful Aging
Jackie Dawson, Assistant Professor, Physical Therapy
Jana Fogaca, Assistant Professor, Kinesiology
Kamiar, Alaei, Department Chair, Health Science
Kellie Walters, Assistant Professor, Kinesiology
Leilani Madrigal, Assistant Professor, Kinesiology
Michelle Barrack, Associate Professor, Nutrition and Dietetics
Michelle Taylor, Assistant Professor, Family and Consumer Sciences
Sandra Arrevalos, Assistant Professor, Human Development
Selena Nguyen-Rodriguez, Associate Professor, Health Science
Virginia Gray, Associate Professor, Nutrition and Dietetics

External Faculty Collaborators:

Lilia Espinoza, Associate Professor, Public Health, Cal State Fullerton
Laura Chandler, Associate Professor, Public Health, Cal State Fullerton
Rita Higgins, Professor, Nutrition and Foods, Fullerton College
Sarah Mathot, Nutrition & Foods, Santa Ana College
Jennifer Musick, Kinesiology/ Health Education, Long Beach City College
Jazmin Hurtado, Adjunct Counselor & Professor, Santa Ana College



Collaborating Partners:

- Adam Lara, Violence Prevention Manager, Long Beach Department of Health and Human Services
- Adele Langworthy, Executive Director, Rising Tide
- Adrian Toledo, Violence Prevention Initiative Coordinator, Long Beach Department of Health and Human Services
- Alejandra Gepp, Senior Director for Health Programs, UnidosUS
- Daniella Orihuela, Senior Program Manager, UnidosUS
- Darlene Kiyon, Executive Director, Toberman Neighborhood Center
- Eduardo Garcia, Activating Safe Communities Program Manager, Long Beach Department of Health and Human Services
- Elizabeth Carrillo, Director of Health Program, UnidosUS
- Hector Jimenez, Executive Director, Toberman Neighborhood Center
- Hilda Gaytan, Founder, Puente Latino Association
- Les G. Peters, Executive Director, YMCA
- Sheila Grantham, Executive Director, Adventures to Dreams Enrichment
- Viviana Goh, Associate Director, Adventures to Dreams Enrichment

Advisory Board:

- Sara Elena Loaiza, Executive Director, Latino Consultants
- Vickie Mays, Professor, UCLA Psychology and Fielding School of Public Health
- Jennifer Ng'andu, Senior Program Officer, Robert Wood Johnson Foundation
- Kurt Organista, Professor, University of Berkeley School of Social Welfare
- Henry Pacheco, Director of Medicine and Public Health, National Hispanic Council on Aging
- Britt Rios-Ellis, Dean, College of Health Sciences and Human Services, CSU Monterey Bay
- Richard Zaldivar, Executive Director, The Wall Las Memorias Project
- Felipe Castro, Professor and Southwest Borderlands Scholar, Arizona State University
- Jorge Daboub, Vice-President of Client Development, Univision
- Zoila Escobar, Vice President of Strategic Development and Community Support and President of the AltaMed Foundation, AltaMed Health Services
- Cynthia Gomez, Director, San Francisco State University Health Equity Institute
- David Hayes-Bautista, Professor of Medicine and Director of the Center for the Study of Latino Health and Culture at the School of Medicine, University of California Los Angeles
- Ana Carricchi-Lopez, City Health Officer, Long Beach Department of Health and Humans Services



LONG BEACH STATE UNIVERSITY
**CENTER FOR LATINO
COMMUNITY HEALTH**
EVALUATION & LEADERSHIP TRAINING

**Center for Latino Community Health, Evaluation, and Leadership Training
California State University, Long Beach**

1250 Bellflower Blvd. SSPA 024
Long Beach, CA 90840
562-985-5312
CSULB-LatinoCenter@csulb.edu
www.csulb.edu/latinohealth