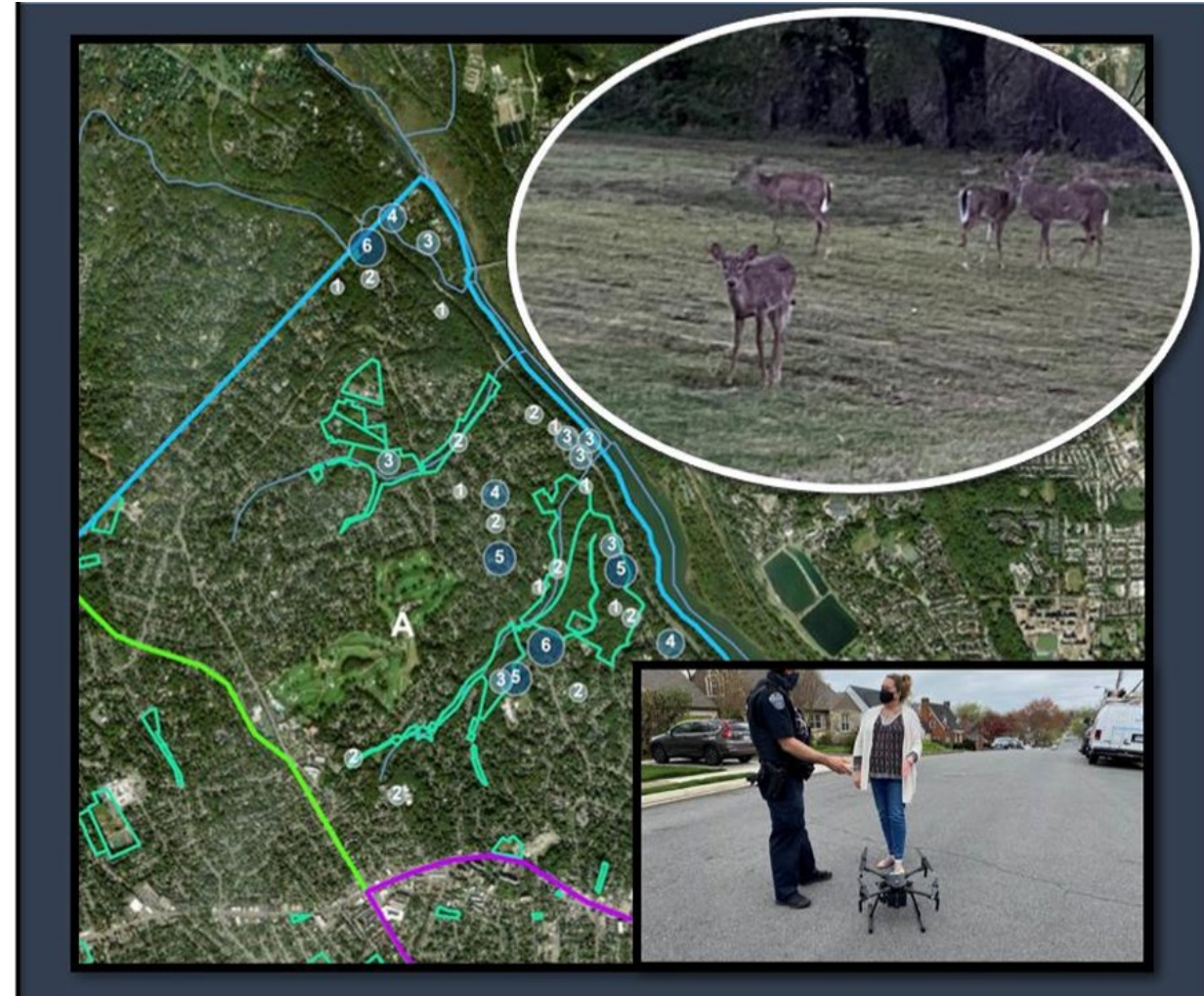


# Deer Management Project

Online Engagement #2

# Deer Monitoring and Management in Arlington

- Anecdotal **evidence of deer overbrowsing** has been seen over the years.
- April 2021 - Arlington County conducts an aerial drone survey
  - Survey found at least 290 deer County wide on non-Federal lands.
  - Population Densities were 1.9 - 17 times recommended levels in key parks.
- Fall 2022 – Arlington County conducts herbivory impact surveys in 12 forest parks to evaluate deer impacts to native vegetation.
  - 12/12 parks showed deer browse damage





# A Tale of Two Forests



## Lacey Woods

The forest is mostly untouched by deer



## Barcroft Park

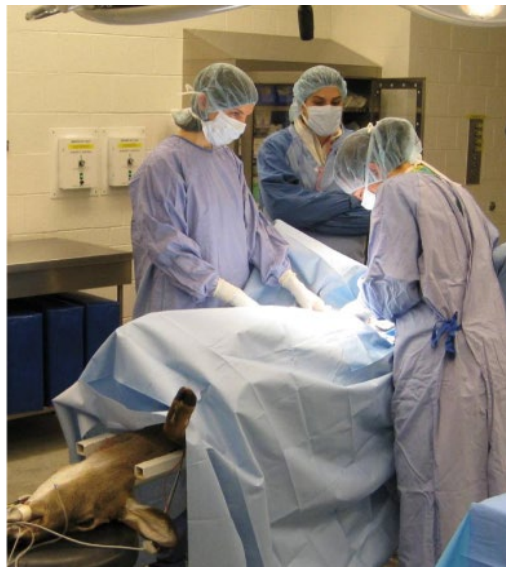
The forest is mostly eaten by<sub>3</sub> deer



# Management Options Considered



Professional  
Sharpshooting



Fertility Control  
(surgical)



Controlled Public  
Archery



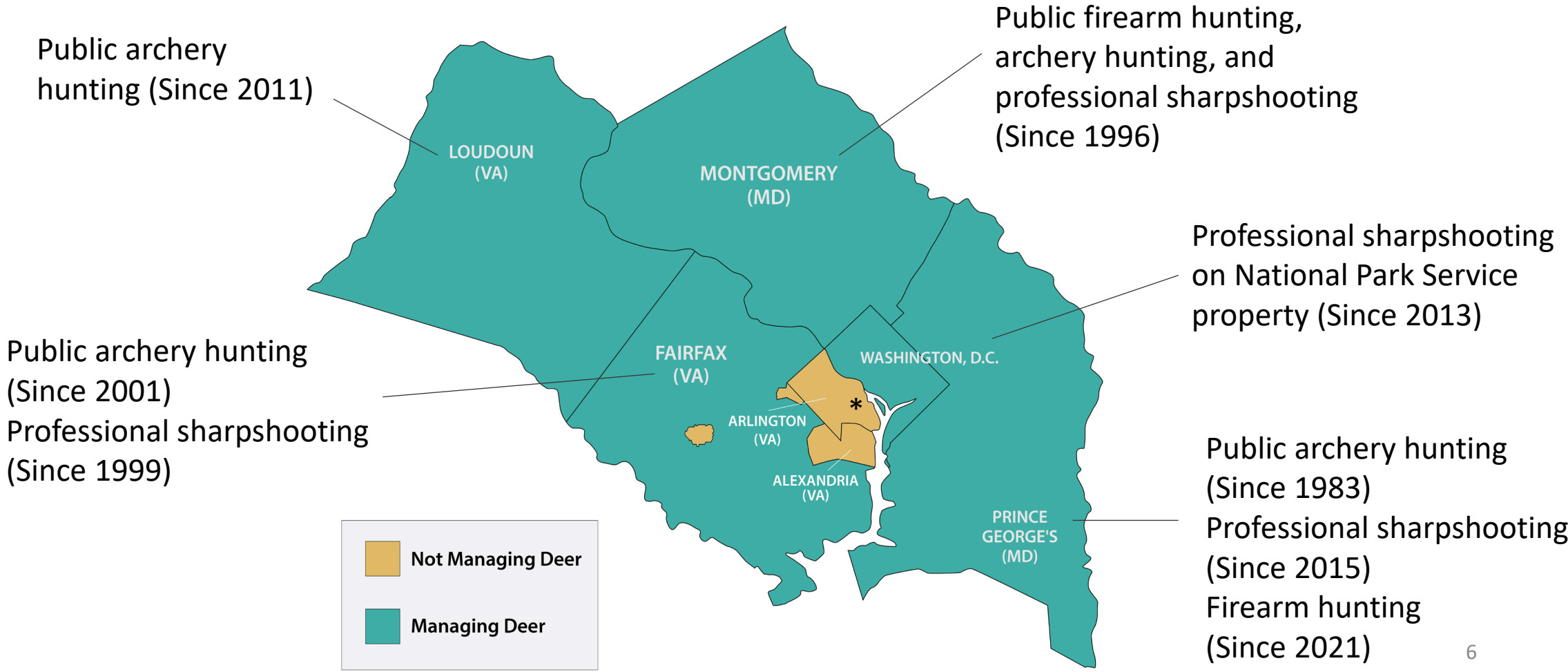
Fencing



Repellants



# Ongoing Deer Management in Adjacent Jurisdictions



\*Active public archery hunting at Army Navy Country Club (private property since 2012)

# Factors Considered When Developing Draft County Recommendations

---

- Safety, effectiveness of management option, cost, accepted method of euthanasia by American Medical Veterinary Association.
- Community feedback on deer management preferences.
- Regional benchmark data and research.
- Herbivory Impact Assessment (browse study) findings.
- Consultant recommendations.



# Draft County Recommendations

---

- **Professional Sharpshooting:** Primary method to immediately reduce deer populations in County-owned natural land parks. Offers immediate impact and cost savings compared to surgical sterilization. Requires amendment to County Code.
- **Fencing/Repellants:** Recommended for small areas to protect priority plant species. Can only complement, not replace professional sharpshooting.
- **Continued Monitoring:** Conduct periodic deer population surveys using drones. Implement two different herbivory impact assessments annually based on established methods.
- **Review Deer Vehicle Collision Data and Intake Collection Methods:** Review ACPD, AWLA, and VDOT tracking methods.
- **Monitor Tick-Borne Disease:** Incorporate CDC annual Lyme disease numbers into monitoring program. Explore options for monitoring other relevant diseases such as alpha-gal.



# Methods not included in County Recommendation

---

Consultant recommendation identified surgical sterilization and public archery hunting to be considered if sharpshooting is not selected or to be used as a supplement to meet management goals.

**The County did not include these methods in its final recommendations because:**

- **Surgical Sterilization** is considered experimental by the Virginia State Department of Wildlife Resources, has a delayed benefit and higher cost compared to professional sharpshooting, and lacks evidence that it could reduce the deer population sufficiently enough to promote forest health.
- **Public Archery Hunting** is not practical for Arlington's parks because they are too densely developed, active, and close to residences for archers to operate efficiently, impactfully, and at scale during daylight hours when they are permitted to hunt by the state.

# Deer Management Project Timeline

Origin: Natural Resources Management Plan  
 Funding: General Fund  
 Staff Contact: Alonso Abugattas  
 Abugattas@arlingtonva.us



**Online Feedback**  
 (e.g., questionnaire, feedback form, etc.)



**In-Person Engagement and Pop-Ups**  
 (e.g., community meeting, roundtable, tabling, walking/bus tour, deliberative dialogue, etc.)



**Virtual Meeting**  
 (e.g., TEAMS, TEAMS live, Zoom, etc.)



**County Board Engagement**  
 (e.g., public hearing, Board work session, open door Monday, commission meeting, etc.)



**Key Milestone**