

Product Highlights

AWE-7250R-16S-F

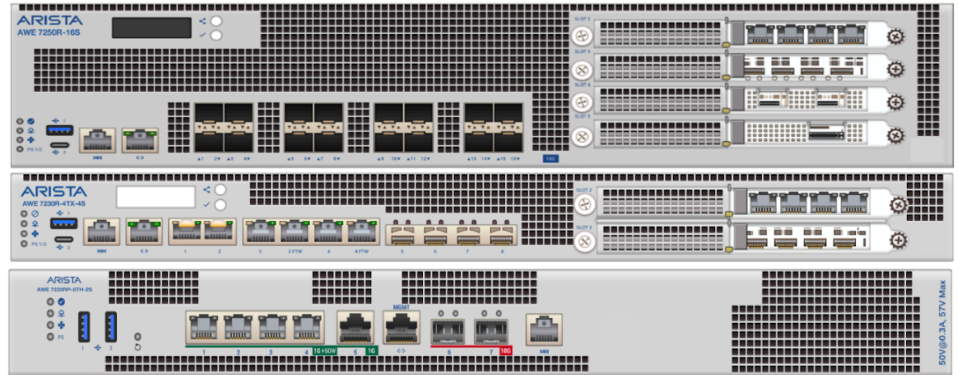
- 50 Gbps Encrypted / 100 Gbps Aggregate Throughput
- 16x 10G Ethernet ports (SFP+)
- 4x Expansion Slots

AWE-7230R-4TX-4S-F

- 5 Gbps Encrypted / 30 Gbps Aggregate Throughput
- 4x 1/2.5/5/10G (RJ45) Ethernet ports (2x Port FTW)
- 4x 1/10G (SFP+) Ethernet ports
- 2x Expansion Slots

AWE-7220RP-5TH-2S-F

- 1G Encrypted / 5 Gbps Aggregate Throughput
- 4x 10M/100M/1G (RJ45) Ethernet ports with POE++ (60W)
- 1x 10M/100M/1G (RJ45) Ethernet Ports
- 2x 1/10G (SFP+) Ethernet ports



Overview

The new Arista AWE 7200R Series WAN Routing Platforms, powered by Arista EOS, offer high-performance control and data-plane scaling fit-to-purpose for enterprise-class WAN

Arista AWE 7200R Series Routers

The Arista AWE 7200R Series supporting 1/10/100 GbE interfaces and flexible network modules can handle throughput of 2 Gbps to 100 Gbps for aggregate traffic. Encrypted throughput supported is 1Gbps to over 50 Gbps of aggregate AES256 encrypted imix traffic with high routing tables, VRF and tunnel scale.

This level of performance makes it suitable for various use cases, supporting traditional routing and SD-WAN use cases, making it an ideal choice for scenarios where robust network aggregation and interconnectivity are critical.

The Arista AWE 7200R Series sets the standard for aggregation and critical site interconnect with multiple use cases such as:

- **Enterprise Class Routing System** – Physical, Virtual, and Cloud: all identical EOS software and consistent capabilities. Redundant Power and Cooling.
- **Aggregation and High-Performance Edge Routing** – The Arista AWE-7250R WAN System, supporting up to 50 Gbps of encrypted traffic or 100 Gbps unencrypted traffic, is ideal for data center, campus, high-performance edge, and physical transit hub architectures.
- **Flexible Edge Routing** – The Arista AWE-7230R and AWE-7220RP WAN Systems are designed for high-volume edge connectivity and facilitate the transition of WAN locations to multi-carrier, 5G, and high-speed Internet connections. The AWE-7230R delivers performance capabilities of up to 5 Gbps for encrypted traffic and 30 Gbps for unencrypted traffic. The AWE-7220R supports up to 1 Gbps of encrypted traffic and 5 Gbps of unencrypted traffic. These systems provide versatile and powerful solutions for modern networking demands
- **Dual-Modality** - Devices can be traditional federated routers AND automatically provisioned SD-WAN devices.

Segmentation and Overlay

- IPv4 VRFs
- EVPN
- GRE & IPsec Tunnel

Traffic and Flow Monitoring

- IPFIX
- FlowTracker to inventory devices and monitor conversations
- Port Mirroring

Enterprise WAN Resilience

- N+1 redundant power/cooling
- Dynamic Path Selection load balancing
- AutoVPN
- Adaptive Virtual Topology
- Fail-to-Wire (FTW) WAN link protection

Arista Extensible Operating System (EOS®)

- Single binary image
- Fine-grained truly modular network OS
- Stateful Fault Containment (SFC)
- Stateful Fault Repair (SFR)
- Full access to Linux shell and tools
- Extensible platform - bash, python, C++, GO, OpenConfig

Arista EOS

The Arista AWE-7200R series runs the same Arista EOS software as all Arista products, simplifying network administration. Arista EOS is a modular switch operating system with a unique state sharing architecture that cleanly separates switch state from protocol processing and application logic. Built on top of a standard Linux kernel, all EOS processes run in their own protected memory space and exchange state through an in-memory database. This multi-process state sharing architecture provides the foundation for in-service-software updates and self-healing resiliency.

With Arista EOS, advanced monitoring and automation capabilities such as Zero Touch Provisioning, VMTracer and Linux based tools can be run natively on the switch.

The CloudVision Pathfinder Service delivers the following key capabilities:

WAN Fabric - Secure Encrypted Transport

To provide secure encrypted transport over the end-to-end network, a WAN fabric is built between the routing platforms deployed at each customer location - across data center, campus, branch, and cloud. The WAN fabric is essentially a secure overlay network, built and maintained by Dynamic Path Selection (DPS), Inband Network Telemetry (INT), and Automated Virtual Private Network (Auto-VPN).

Adaptive Virtual Topology - Application-Aware Routing

Arista Adaptive Virtual Topology (AVT) is a network abstraction construct on top of the WAN Fabric that allows customers to put applications into groups, applying different network policies including:

- Application Group Policy: DPI (Deep Packet Inspection) based or 5-tuple based
- Network Topology Policy: hub-spoke, full mesh, regional full mesh
- Traffic Engineering Policy: based on WAN links, Cloud Transit, network performance, and cost
- Internet Exit Policy: local internet exit, remote internet exit through a firewall, internet exit through a cloud security provider
- QoS Policy: classification, queuing, shaping

CloudVision Pathfinder Service with Transit Hubs - Traffic Engineering

The CloudVision Pathfinder Service combined with Transit Hubs to provide a holistic traffic engineering approach to improving the end-to-end enterprise application experience. Arista Pathfinder Service includes a managed Path Computation Engine that oversees all the routing platforms within an enterprise and the network performance of all links, computing the best possible path for every application. This could be a direct path between two sites or a multi-hop path that goes through a transit hub point.

Transit Hubs are physical or virtual WAN routing systems deployed in carrier-neutral and cloud-adjacent facilities with dense telecommunications interconnection. Arista has partnered with Equinix to allow enterprise customers to deploy Transit Hubs using CloudEOS on Equinix Network Edge and Bare Metal Cloud Platforms and leveraging the Equinix Fabric backbone network to deliver a superior experience for enterprise applications.

- Fast access to the public cloud providers via Equinix 27+ global metros
- End-to-end encryption from the data center, campus, and branch to the cloud
- Improving site-to-site connectivity using Equinix Fabric with Arista Pathfinder Service
- Flexible deployment with Equinix Network Edge and Bare Metal Cloud

Service Onboarding

Seamlessly enabling enterprise network services like firewalls, IPS, IDS, observability tools and many more are a key priority for IT teams. The Arista CV Pathfinder solution allows customers to connect the Arista WAN Fabric to any internal and external services and define an AVT policy to route traffic to wherever the service resides.

CloudVision

CloudVision is Arista's management plane solution for simplifying network operations. Built on a modern state-streaming architecture, CloudVision is a multi-function software platform that enables a suite of capabilities for automated provisioning, change control, continuous compliance, real-time telemetry, predictive analytics and 3rd party management plane orchestration. As a multi-domain solution, CloudVision is a single management platform across data center, campus, WiFi, multi-cloud, and routing interconnect use-cases. The same CloudVision software is offered as an on-prem appliance (virtual or physical) as well as CloudVision as-a-Service, which is a Arista-managed SaaS solution.



CloudVision Pathfinder

System Overview

AWE-7250R-16S-F

Provides:

- 50 Gbps Encrypted / 100 Gbps Aggregate Throughput
- 16x 10G Ethernet ports (SFP+)
- 4x NIM Expansion Slots



AWE-7230R-4TX-4S-F

Provides:

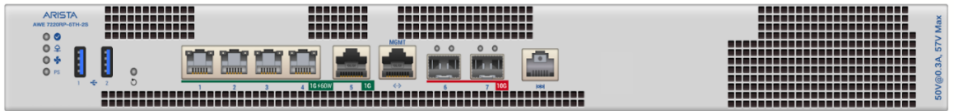
- 5 Gbps Encrypted / 30 Gbps Aggregate Throughput
- 4x 1/2.5/5/10G (RJ45) Ethernet ports (2x Port FTW)
- 4x 1/10G (SFP+) Ethernet ports
- 2x NIM Expansion Slots



AWE-7220RP-5TH-2S-F

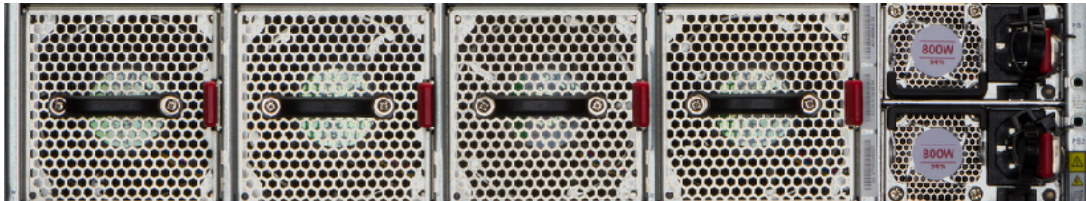
Provides:

- 1Gbps Encrypted / 5 Gbps Aggregate Throughput
- 4x 10M/100M/1G (RJ45) Ethernet ports with POE++ (60W)
- 1x 10M/100M/1G (RJ45) Ethernet Ports
- 2x 1/10G (SFP+) Ethernet ports

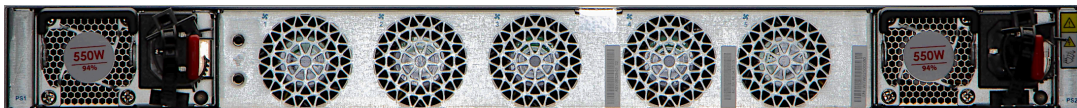


Power supplies and Fans

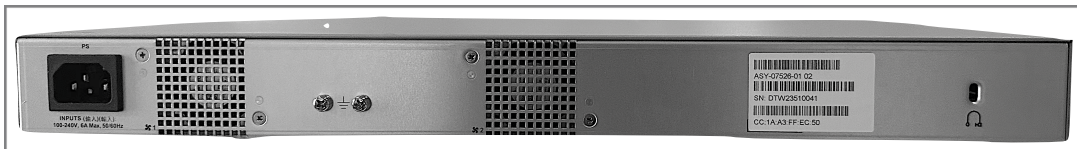
Enterprise WAN series routers support n+1 redundant power supplies. The AWE-7220R series router has built in fans and a single power supply, the AWE-7230R series router has built in fans with replaceable power supplies, the AWE-7250R ships with four hot-swap field replaceable fans and two replaceable power supplies.



AWE-7250R Rear (front to rear airflow)



AWE-7230R Rear (front to rear airflow)



AWE-7220RP Rear (front to rear airflow)

Layer 3 Features

- Routing Protocols: OSPFv2, BGPv4, IS-IS, and RIPv2
- Dynamic Path Selection
- In-band Path Telemetry
- Equal-Cost Multi-Path Routing (ECMP)
- Virtual Router Redundancy Protocol (VRRP)
- Route Reflector (BGP RR AF IPv4)
- Network Address Translation (NAT)
- Generic Routing Encapsulation (GRE)
- Bidirectional Forwarding Detection (BFD)
- 802.1AB Link Layer Discovery Protocol
- Quality of Service (QoS)
- DHCP Server
- IPv6 Static Routing
- OSPFv3
- BGPv6
- BFDv6

Security Features

- AutoVPN
- IPsec VPNs
- Ingress/Egress ACLs using L3, L4 fields
- ACL Logging and Counters
- Role Based Access Control (RBAC)
- TACACS+, RADIUS Auth., Authorization and Accounting

VXLAN Features

- VXLAN Routing
- BGP L3 EVPN (Type 5) v4

Advanced Monitoring and Provisioning

- Zero Touch Provisioning (ZTP)
- Integrated packet capture/analysis (tcpdump/libpcap) • GREenSPAN (GRE SPAN)
- IPFIX

Multicast

- IGMP
- PIM-SSM/SM
- PIM-BSR
- PIM-MBR
- PIM Unnumbered
- PIM RP Multicast source filter
- Multicast over IPsec and GRE tunnel

Extensibility

- Advanced Event Management (AEM)
- CLI Scheduler
- Event Manager
- Event Monitor
- Linux Tools
- Bash shell access and scripting
- RPM support
- DevOps/NetOps Tool Support
- CloudVision
- Ansible/Chef/Puppet/Salt
- ServiceNow
- Programmatic access to network-wide state
- Python, C++, Go

SNMP MIBs

- RFC 4750 OSPF-MIB
- RFC 4273 BGP4-MIB
- RFC 3635 EtherLike-MIB
- RFC 3418 SNMPv2-MIB
- RFC 2864 IF-INVERTED-STACK-MIB
- RFC 2863 IF-MIB
- RFC 2790 HOST-RESOURCES-MIB

- RFC 2096 IP-FORWARD-MIB
- RFC 2013 UDP-MIB
- RFC 2012 TCP-MIB
- RFC 2011 IP-MIB
- RFC 6353 SNMP-TLS-TM-MIB
- RFC 5591 SNMP-TSM-MIB
- VRRPV2-MIB
- RFC 2787 VRRPV2MIB
- LLDP-MIB
- LLDP-EXT-DOT1/3-MIB
- HOST-RESOURCES-MIB
- ENTITY-STATE-MIB
- ENTITY-MIB
- ARISTA-VRF-MIB
- ARISTA-SW-IP-FORWARD-MIB
- ARISTA-SNMP-TRANSPORTS-MIB
- ARISTA-SMI-MIB
- ARISTA-QUEUE-MIB
- ARISTA-PRODUCTS-MIB
- ARISTA-PFC-MIB
- ARISTA-IF-MIB
- ARISTA-DAEMON-MIB
- ARISTA-CONFIG-MAN-MIB
- ARISTA-CONFIG-COPY-MIB
- ARISTA-BGPV4V2-MIB
- ARISTA-ACL-MIB
- User configurable custom OIDs

SNMP TRAPS

- Authentication Failure trap, linkUp, LinkDown, coldStart, nsNotifyRestart, entConfigChange, entStateOperEnabled, entStateOperDisabled, VRRP, OSPF, and BGP supported.
- Additional event traps and log messages can be generated through AEM and eAPI scripting.

Network Management

- CloudVision
- Configuration session commit and rollback
- 100/1000 Management Port
- RS-232 Serial Console Port
- USB A & C Port
- SNMP v1, v2, v3
- Telnet and SSHv2
- Syslog
- AAA
- Industry Standard CLI
- Beacon LED for system identification
- System Logging
- Environment monitoring
- Maintenance mode

Extensibility

- Linux Tools
 - Bash shell access and scripting
 - RPM support
 - Custom kernel modules
- Programmatic access to system state
 - Python
 - C++
 - Go

Specifications

Feature/Model	AWE-7220RP-5TH-2S-F	AWE-7230R-4TX-4S-F	AWE-7250R-16S-F
Ports	4 RJ45 10/100/1G POE++ 1 RJ45 10/100/1G 2 1/10G (SFP+)	4 RJ45 1/2.5/5/10G 4 1/10G SFP+	16 1/10G SFP+
NIM Slots (OCP3.0)	N/A	2	4
Encrypted Throughput (iMix, Aggregate) / UnEncrypted	1 Gbps / 5 Gbps	5 Gbps / 30 Gbps	50 Gbps / 100 Gbps
CPU	4 core -x86	8 core -x86	20 core -x86
System Memory	16GB	32GB	64GB
System Flash	32GB	256GB	256GB
USB Ports	2		
Console Ports	1		
100M/1G Management port	1		
Bluetooth Antenna	N/A		
Airflow	Front to Rear		
Power (Max)	370W	550W	800W
Size (WxHxD)	17.32" x 1.69" x 11" (44 x 4.35 x 28cm)	17.32" x 1.71" x 16.93" (44 x 4.35 x 43cm)	17.32" x 3.47" x 20.47" (44 x 8.8 x 52cm)
Weight		20.5 bs (9.3kg)	29.98 lbs (13.6 kg)
Fans:	Fixed (2)	Fixed (4 + 1)	FAN-7202-RED (3 + 1)
Maximum Power Supply	1	2	2
Power Supply	Fixed	PWR-561-AC-RED	PWR-861-AC-RED
EOS License Group	LIC-WANx-ENCR SS-CV-WANx-1M SS-CVS-WANx-1M SS-CVPATH-WANx-E-CVS-B-1M		
Minimum EOS	4.32.2F	4.31.1.1FX-AWE, 4.31.3M, 4.32.0F	4.31.1.1FX-AWE, 4.31.3M, 4.32.0F

Arista Optics and Cables

The Arista AWE-7200R Series supports a wide range of 1G, 10G, 25G and 100G pluggable optics and cables in the SFP ports. For details about the different optical modules and the minimum EOS Software release required for each of the supported optical modules, visit <https://www.arista.com/en/products/transceivers-cables>

Supported Optics and Cables

AWE-7250R

Ports 1/1 to 1/8 (10G)	10GBASE-CR 10GBASE-AOC 10GBASE-SR 10GBASE-LR
Ports 1/1 to 1/8 (1G)	1GbE SX/LX
Ports 1/1 to 1/16 (1G)	SFP-1G-T
Ports 1/9 to 1/16 ACP (10G)	10GBASE-CR 10GBASE-AOC 10GBASE-SRL 10GBASE-SR 10GBASE-LRL 10GBASE-LR 10GBASE-ER 10GBASE-ZR 10GBASE-DWDM SFP-10G-T

Supported Optics and Cables

AWE-7230R

Ports 1/1 to 1/4 ACP (1/2.5/5/10G)	RJ45
Ports 1/5 to 1/8 ACP (1G)	1GbE SX/LX SFP-1G-T
Ports 1/5 to 1/8 ACP (10G)	10GBASE-CR 10GBASE-AOC 10GBASE-SRL 10GBASE-SR 10GBASE-LRL 10GBASE-LR 10GBASE-ER 10GBASE-ZR 10GBASE-DWDM SFP-10G-T

Supported Optics and Cables

AWE-7220RP

Ports 1-5 (10/100/1G) Ports 1-4 (10/100/1G)	RJ45 RJ45 (POE)
Ports 6-7 ACP (10G)	10GBASE-CR 10GBASE-AOC 10GBASE-SRL 10GBASE-SR 10GBASE-LRL 10GBASE-LR No SFP-10G-T
Ports 6-7 ACP (1G)	1GbE SX/LX No SFP-1G-T

Environmental Characteristics

Operating Temperature	0 to 40C (32 to 104F)
Storage Temperature	-40 to 70C (-40 to 158F)
Relative Humidity	5 to 95% (non-condensing)
Operating Altitude	0 to 10,000 ft, (0-3,000m)
Measured sound (ISO 7779) declared (ISO 9296) at 50% & 100% power	Lwa (dB) 57.59/68.17 (1RU)

Power Supply Specifications

Power Supply	PWR-561-AC-RED	PWR-861-AC-RED
Output Power	550W	800W
Input Voltage	100-240AC	100-240AC
Input Current	8 - 4A	10 - 5A
Input Frequency	50-60Hz	50-60Hz
Input Connector	IEC-320-C14	IEC-320-C14
Efficiency	80+ Platinum	80+ Platinum

Emissions and Safety Compliance

EMC Emissions Immunity	FCC Part15, subpart B (Class A) ICES-003: 2020 Issue 07 EN 301 489-1 EN 301 489-17 EN55032 EN 300 386 EN 61000-3-2:2014 EN IEC 61000-3-2 EN 61000-3-3:2013, VCCI-CISPR32 AS/NZS CISPR32 EN55035
Radio	FCC 15.247 RSS-247 EN 300 328 EN 62479
Bluetooth	BCQ
Safety	UL 62368-1, 3rd Edition CAN/CSA C22.2 No. 62368-1-19 EN 62368-1:2014+A11:2017 IEC 62368-1:2014
Certifications	BSMI, NCC (Taiwan) CE (European Union) KCC (South Korea) NRTL (North America) RCM (Australia / New Zealand) UKCA (United Kingdom) VCCI (Japan)
European Union Directives	Directive 2014/53/EU Directive 2014/35/EU Directive 2014/30/EU Directive 2012/19/EU WEEE Directive 2011/65/EU RoHS Directive 2015/863/EU

Product Number	Product Description
AWE-7220RP-5TH-2S-FLX-F	Arista 7220R Router up to 2Gbps, 4x 1GBASE-T POE++ ports, 1x 1GBASE-T port, 2x 10G SFP+ ports, front to rear air. Including FLX License
AWE-7230R-4TX-4S-FLX-F	Arista 7230R Router up to 30Gbps, 4x 10GBASE-T ports (w/2x fail to wire ports) 4x 10G SFP+ ports, 2 expn. slots, front to rear air, 2x AC. Incl. FLX License
AWE-7250R-16S-FLX-F	Arista 7250R Router up to 100Gbps, 8x 10G SFP+, 8x 10G SFP+ enh ports, 4 expn. slots, front to rear air, 2x AC. Incl. FLX License
LIC-WAN1-ENCR	Encryption License for Arista WAN platform Band 1, IPsec
LIC-WAN2-ENCR	Encryption License for Arista WAN platform Band 2, IPsec
LIC-WAN4-ENCR	Encryption License for Arista WAN platform Band 4, IPsec
SS-CV-WAN1-1M	CloudVision SW Subscription License for 1-Month for Arista WAN platform Band 1. Delivered via download only.
SS-CV-WAN2-1M	CloudVision SW Subscription License for 1-Month for Arista WAN platform Band 2. Delivered via download only.
SS-CV-WAN4-1M	CloudVision SW Subscription License for 1-Month for Arista WAN platform Band 4. Delivered via download only.
SS-CVS-WAN1-1M	CloudVision as-a-Service Subscription License for 1-Month for Arista WAN platform Band 1
SS-CVS-WAN2-1M	CloudVision as-a-Service Subscription License for 1-Month for Arista WAN platform Band 2
SS-CVS-WAN4-1M	CloudVision as-a-Service Subscription License for 1-Month for Arista WAN platform Band 4
SS-CVPATH-WAN1-E-CVS-B-1M	CV Pathfinder Enterprise SW Subscription License for 1-Month for Arista WAN platform Band 1 including AVT/Pathfinder enforcement, IPsec encryption, CloudVision-As-A-Service.
SS-CVPATH-WAN2-E-CVS-B-1M	CV Pathfinder Enterprise SW Subscription License for 1-Month for Arista WAN platform Band 2, including AVT/Pathfinder enforcement, IPsec encryption, CloudVision-As-A-Service.
SS-CVPATH-WAN4-E-CVS-B-1M	CV Pathfinder Enterprise SW Subscription License for 1-Month for Arista WAN platform Band 4, including AVT/Pathfinder enforcement, IPsec encryption, CloudVision-As-A-Service.
FAN-7202-RED	Spare fan module for Arista 7200R Series Routers (front-to-rear airflow)
PWR-861-AC-RED	Spare 800 Watt AC power supply for Arista 7200R Series Routers (front-to-rear airflow)
PWR-561-AC-RED	Spare 550 Watt AC power supply for Arista 7000 Series Routers (front-to-rear airflow)
SVC-AWE-7220RP-5TH-2S-1M-2H	1-Month A-Care 24x7x2 Software & Hardware Replacement for AWE-7220RP-5TH-2S
SVC-AWE-7220RP-5TH-2S-1M-4H	1-Month A-Care 24x7x4 Software & Hardware Replacement for AWE-7220RP-5TH-2S
SVC-AWE-7220RP-5TH-2S-1M-NB	1 Month A-Care Software & NBD Hardware Replacement/Same Day Ship for AWE-7220RP-5TH-2S
SVC-AWE-7230R-4TX-4S-1M-2H	1-Month A-Care 24x7x2 Software & Hardware Replacement for AWE-7230R-4TX-4S
SVC-AWE-7230R-4TX-4S-1M-4H	1-Month A-Care 24x7x4 Software & Hardware Replacement for AWE-7230R-4TX-4S
SVC-AWE-7230R-4TX-4-1M-NB	1 Month A-Care Software & NBD Hardware Replacement/Same Day Ship for AWE-7230R-4TX-4
SVC-AWE-7250R-16S-1M-2H	1-Month A-Care 24x7x2 Software & Hardware Replacement for AWE-7250R-16S
SVC-AWE-7250R-16S-1M-4H	1-Month A-Care 24x7x4 Software & Hardware Replacement for AWE-7250R-16S
SVC-AWE-7250R-16S-1M-NB	1 Month A-Care Software & NBD Hardware Replacement/Same Day Ship for AWE-7250R-16S
KIT-7010-4POST	Spare 4-post rack mount kit (AWE-7220R)
KIT-7010-2POST	Spare 2-post rack mount kit (AWE-7220R)
KIT-4POST-NT	Spare tool-free 4-post rack mount kit (v2) (AWE-7230R and AWE-7250R)
CAB-C13-AUS	Power Cord, Australia, C13 (2.5m)
CAB-C13-C14	Power Cord C13 to C14 (2m)
CAB-C13-C14-INTL	Power Cord C13 to C14 (2m)
CAB-C13-EUR	Power Cord, Europe, C13, 8 Feet (2.5m)
CAB-C13-IT	Power Cord, Italy, C13, 8 Feet (2.5m)
CAB-C13-UK	Power Cord, United Kingdom, C13, 8 Feet (2.5m)
CAB-C13-US	Power Cord, United States, C13, 8 Feet (2.5m)
CAB-C13-BR	Power Cord, Brazil, C13, 10A/250V, 1.00mm ² , 2.5M
CAB-C13-AR	Power Cord, Argentina, C13, 1.00mm ² , 2.5M
CAB-C13-TW	Power Cord, Taiwan, C13, 2.5M

Warranty

The Arista AWE-7200R Routers come with a one-year limited hardware warranty, which covers parts, repair, or replacement with a 10 business day turnaround after the unit is received.

Service and Support

Support services including next business day and 4-hour advance hardware replacement are available. For service depot locations, please see: <http://www.arista.com/en/service>

Headquarters

5453 Great America Parkway
Santa Clara, California 95054
408-547-5500

Support

support@arista.com
408-547-5502
866-476-0000

Sales

sales@arista.com
408-547-5501
866-497-0000