

USAF MAJOR COMMANDS AND AIR NATIONAL GUARD

The Air Force has nine major commands and two Air Reserve Components. (Air Force Reserve Command is both a majcom and an ARC.) In late 2019, Air Force Space Command was redesignated U.S. Space Force, a separate military branch under the Department of the Air Force.

As significant subdivisions of the Air Force, major commands conduct a considerable part of the service's mission and are directly subordinate to Headquarters USAF. Majcoms are organized on a functional basis in the U.S. and on a geographic basis overseas. In addition to accomplishing designated portions of USAF's worldwide activities, they organize, administer, equip, and train their sub-

ordinate elements.

The majcom sits atop a skip-echelon staffing structure, which means every other organizational level (i.e., majcom, wing, and squadron) will have a full range of staff functions. The other organizations (NAF, group, and flight) are tactical, mission-centered echelons. These tactical echelons are designed to increase operational effectiveness without the burden of additional staff functions.

AFGSC



Air Force Global Strike Command

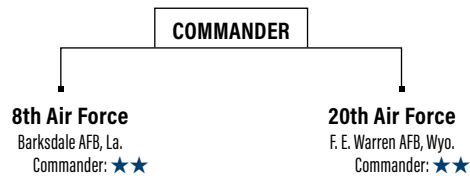
Headquarters: Barksdale AFB, La.
Date of current designation: Aug. 7, 2009
Commander: Gen. Thomas A. Bussiere ★★★★★



Primary Mission

Organize, train, equip, maintain, and provide ICBM forces and long-range bomber forces to combatant commanders; provide installation mission support.

AFGSC Structure



AFGSC AIRCRAFT BY TYPE	
B-1B	43
B-2A	19
B-52H	56
E-4B	4
T-38A	14
UH-1N	25

PERSONNEL	
Active-duty USAF	27,801
Active-duty USSF	4

EQUIPMENT (TOTAL AIRCRAFT INVENTORY)	
Bomber	118
Helicopter	25
ICBM	400
ISR/BM/C3	4
Trainer	14

Source: U.S. Air Force Total Aircraft Inventory (TAI) as of Sept. 30, 2022

MAJOR UNITS	LOCATION	AIRCRAFT/MISSION/WEAPON
2nd Bomb Wing (BW)	Barksdale AFB, La.	B-52H
5th BW	Minot AFB, N.D.	B-52H
7th BW	Dyess AFB, Texas	B-1B
28th BW	Ellsworth AFB, S.D.	B-1B
90th Missile Wing (MW)	F. E. Warren AFB, Wyo.	Minuteman III, UH-1N
91st MW	Minot AFB, N.D.	Minuteman III, UH-1N
341st MW	Malmstrom AFB, Mont.	Minuteman III, UH-1N
377th Air Base Wing	Kirtland AFB, N.M.	Nuclear operations, expeditionary force training, base support
509th BW	Whiteman AFB, Mo.	B-2A, T-38C
576th Flight Test Squadron	Vandenberg SFB, Calif.	Minuteman III
595th Command and Control Group	Offutt AFB, Neb.	Command and control, E-4B



ACC



Air Combat Command

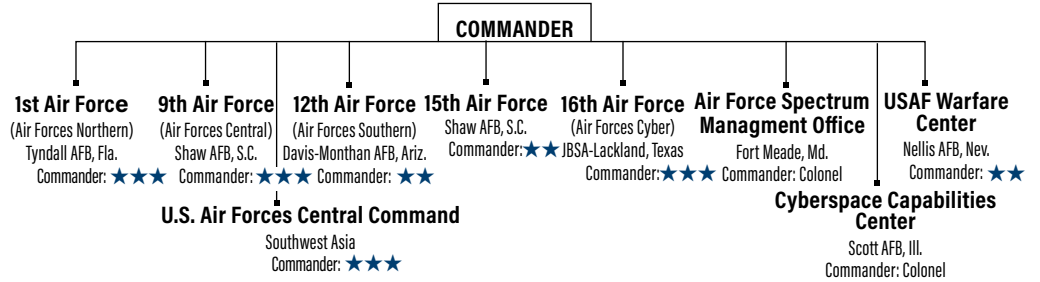
Headquarters: JB Langley-Eustis, Va.
Date of current designation: June 1, 1992
Commander: Gen. Mark D. Kelly ★★★★★



Primary Mission

Primary force provider of combat airpower—fighter, conventional bomber, reconnaissance, battle management, and electronic combat aircraft—to combatant commands. Provide command, control, communications, and intelligence (C3I) systems. Conduct global information operations.

ACC Structure



PERSONNEL	
Active-duty USAF	79,555
Active-duty USSF	73

EQUIPMENT (TAI)	
Fighter/Attack	683
Helicopter	35
ISR/BM/C3	351
Trainer	122

MAJOR UNITS	LOCATION	AIRCRAFT/MISSION/WEAPON
1st Fighter Wing (FW)	JB Langley-Eustis, Va.	F-22, T-38A
4th FW	Seymour Johnson AFB, N.C.	F-15E
9th Reconnaissance Wing	Beale AFB, Calif.	RQ-4, T-38A, U-2
20th FW	Shaw AFB, S.C.	F-16CM
23rd Wing	Moody AFB, Ga.	A-10C, HC-130J, HH-60G
53rd Wing	Eglin AFB, Fla.	A-10C, BQM-167A, E-9A, F-15C/E, F-16C/D, F-22A, F-35A, HC-130J, HH-60G, MQ-9, QF-4, QF-16, RQ-4, U-2
55th Wing	Offutt AFB, Neb.	EC-130H, OC-135B, RC-135S/U/V/W, TC-135S/W
57th Wing	Nellis AFB, Nev.	A-10C, EC-130, F-15, F-15E, F-16, F-22A, F-35A, HH-60G (23rd Wing), MQ-9
67th Cyberspace Wing	JBSA-Lackland, Texas	Cyberspace operations
70th ISR Wing (ISRW)	Fort Meade, Md.	Cryptologic operations
93rd Air Ground Operations Wing	Moody AFB, Ga.	Battlefield Airmen operations, support
99th Air Base Wing (ABW)	Nellis AFB, Nev.	Base support
319th Reconnaissance Wing	Grand Forks AFB, N.D.	Base support
325th FW	Tyndall AFB, Fla.	F-22A
355th Wing	Davis-Monthan AFB, Ariz.	A-10, EC-130H, (55th Wing), F-16CG, HC-130J, HH-60G (23rd Wing)
363rd ISRW	JB Langley-Eustis, Va.	Multi-intelligence analysis, targeting
366th FW	Mountain Home AFB, Idaho	F-15E
388th FW	Hill AFB, Utah	F-16C/D, F-35A
432nd Wing	Creech AFB, Nev.	MQ-1, MQ-9, RQ-170
480th ISRW	JB Langley-Eustis, Va.	DCGS, cyber ISR, CFACC support, signals intelligence integration
461st Air Control Wing (ACW)	Robins AFB, Ga.	E-8C (AA)
505th Command and Control Wing	Hurlburt Field, Fla.	Command and control operational-level tactics, testing, training
552nd ACW	Tinker AFB, Okla.	E-3B/C/G
557th Weather Wing	Offutt AFB, Neb.	Weather information
601st Air Operations Center	Tyndall AFB, Fla.	Plan and direct air operations
616th Operations Center	JBSA-Lackland, Texas	Plan and direct cyber operations
633rd ABW	JB Langley-Eustis, Va.	Joint base facilities support
688th Cyberspace Wing	JBSA-Lackland, Texas	Information operations, engineering installations
AF Rescue Coordination Center	Tyndall AFB, Fla.	National search and rescue coordination
AF Technical Applications Center	Patrick SFB, Fla.	Nuclear treaty monitoring, nuclear event detection

ACC AIRCRAFT BY TYPE

A-10	116	F-16C	148	QF-16C	60
AT-38	6	F-16D	19	RC-135S	3
AT-6	2	F-22A	107	RC-135U	2
E-3B	4	F-35A	122	RC-135V	8
E-3G	23	HC-130J	18	RC-135W	9
E-9A	2	HH-60G	18	RQ-4B	10
E-11	3	HH-60W	17	T-38A	39
EC-130	7	MQ-1	1	TC-135W	3
F-15C	9	MQ-9	224	TU-2S	4
F-15E	158	P-9A	3	U-2S	27
F-15X	2	QF-16A	14	WC-135R	3

Source: U.S. Air Force Total Aircraft Inventory (TAI) as of Sept. 30, 2022



AETC



Air Education and Training Command

Headquarters: JBSA-Randolph, Texas

Date of current designation: July 1, 1993

Commander: Lt. Gen. Brian S. Robinson ★★ ★



USAF

Primary Mission

Recruit, train, and educate airmen through basic military training, initial and advanced technical training, and professional military education.

AETC Structure



PERSONNEL	
Active-duty USAF	56,285
Active-duty USSF	527

EQUIPMENT (TAI)	
Fighter/Attack	250
Helicopter	25
Tanker	25
Trainer	1,126
Transport	52

MAJOR UNITS	LOCATION	AIRCRAFT/MISSION/WEAPON
12th Flying Training Wing (FTW)	JBSA-Randolph, Texas	T-1A, T-6A, T-38C (CSO at NAS Pensacola, Fla.)
14th FTW	Columbus AFB, Miss.	T-1A, T-6A, T-38C (A-29 at Moody AFB, Ga.)
17th Training Wing (TRW)	Goodfellow AFB, Texas	Technical training
33rd Fighter Wing (FW)	Eglin AFB, Fla.	F-35
37th TRW	JBSA-Lackland, Texas	Basic military and technical training
42nd Air Base Wing (ABW)	Maxwell AFB, Ala.	Base support
47th FTW	Laughlin AFB, Texas	T-1A, T-6A, T-38C
49th Wing	Holloman AFB, N.M.	MQ-1, MQ-9, QF-16
56th FW	Luke AFB, Ariz.	F-16, F-35
56th Air Refueling Squadron	Altus AFB, Okla.	KC-46
58th Special Operations Wing	Kirtland AFB, N.M.	CV-22, HC-130J/P/N, HH-60G, HH-60W, MC-130H/J/P, UH-1N, TH-1H
59th Medical Wing	JBSA-Lackland, Texas	Wilford Hall Ambulatory Surgical Center
71st FTW	Vance AFB, Okla.	T-1A, T-6A, T-38C
80th FTW	Sheppard AFB, Texas	T-6A, T-38C
81st TRW	Keesler AFB, Miss.	Technical training
82nd TRW	Sheppard AFB, Texas	Technical training
97th Air Mobility Wing	Altus AFB, Okla.	C-17, KC-135R, KC-46
314th Airlift Wing	Little Rock AFB, Ark.	C-130J
502nd ABW	JBSA-Fort Sam Houston, Texas	JBSA facilities support
AF Profession of Arms Center of Excellence	JBSA-Randolph, Texas	Professional training
AF Institute of Technology	Wright-Patterson AFB, Ohio	Postgraduate education
Carl A. Spaatz Center for Officer Education	Maxwell AFB, Ala.	Officer professional military education (PME)
Curtis E. LeMay Center for Doctrine Dev. & Education	Maxwell AFB, Ala.	Air Force doctrine development
Ira C. Eaker Center for Leadership Dev.	Maxwell AFB, Ala.	Professional and technical continuing education
Jeanne M. Holm Center for Officer Accessions and Citizen Development	Maxwell AFB, Ala.	Officer training, ROTC and JROTC oversight
Muir S. Fairchild Research Information Center	Maxwell AFB, Ala.	Information resources
Thomas N. Barnes Center for Enlisted Education	Maxwell AFB, Ala.	Enlisted PME

AETC AIRCRAFT BY TYPE

C-130J	14	KC-135R	17	T-51A	3
C-17A	17	KC-135T	1	T-53A	24
CV-22B	8	KC-46A	7	TG-15A	2
F-16C	69	MC-130J	7	TG-15B	3
F-16D	41	MQ-9	24	TG-16A	19
F-35A	140	T-1A	177	TG-17A	1
HC-130J	3	T-6A	442	TH-1H	28
HH-60G	8	T-38C	423	UH-1N	10
HC-60W	7	T-41D	4	UV-18B	3

Source: U.S. Air Force Total Aircraft Inventory (TAI) as of Sept. 30, 2022



AFRC



Air Force Reserve Command

Headquarters: Robins AFB, Ga.

Date of current designation: Feb. 17, 1997

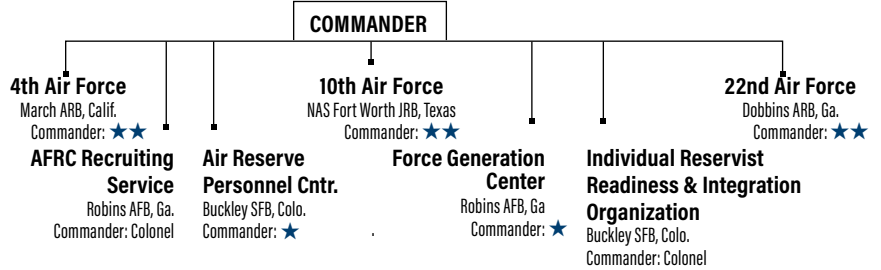
Commander: Lt. Gen. John P. Healy ★★ ★



AFRC Structure

Primary Mission

Provide strike, air mobility, special operations forces, air mobility, special operations forces, rescue, aeromedical evacuation, aerial firefighting and spraying, weather reconnaissance, cyberspace operations, ISR, space, flying training, and other capabilities to support the Active-duty force and assist with domestic and foreign disaster relief.



PERSONNEL	
Selected Reserve	68,048

AFRC AIRCRAFT BY TYPE				EQUIPMENT (TAI)	
A-10	55	F-16C	52	Bomber	18
B-52H	18	F-16D	2	Fighter/Attack	109
C-130H	42	HC-130J	6	Helicopter	16
C-130J	10	HH-60G	16	ISR/BM/C3	10
C-17A	26	KC-135R	62	Tanker	69
C-40	4	KC-46A	7	Transport	104
C-5M	16	WC-130J	10		

MAJOR UNITS	LOCATION	AIRCRAFT/MISSION/WEAPON
94th Airlift Wing (AW)	Dobbins ARB, Ga.	C-130H
301st Fighter Wing (FW)	NAS JRB Fort Worth, Texas	F-16
302nd AW	Peterson SFB, Colo.	C-130H (including Modular Airborne Firefighting System)
307th Bomb Wing	Barksdale AFB, La.	B-52H
310th Space Wing	Schriever SFB, Colo.	Space control/operations/warning, information operations
315th AW (classic associate)	JB Charleston, S.C.	C-17
349th Air Mobility Wing (classic associate)	Travis AFB, Calif.	C-5, C-17, KC-10
403rd Wing	Keesler AFB, Miss.	C-130J, WC-130J
419th FW (classic associate)	Hill AFB, Utah	F-35A
433rd AW	JBSA-Lackland, Texas	C-5M, formal training unit
434th Air Refueling Wing (ARW)	Grissom ARB, Ind.	KC-135R
439th AW	Westover ARB, Mass.	C-5M
442nd FW	Whiteman AFB, Mo.	A-10C
445th AW	Wright-Patterson AFB, Ohio	C-17
446th AW (classic associate)	JB Lewis-McChord, Wash.	C-17
452nd AMW	March ARB, Calif.	C-17, KC-135R
459th ARW	JB Andrews, Md.	KC-135R
482nd FW	Homestead ARB, Fla.	F-16C
507th ARW	Tinker AFB, Okla.	KC-135R
512th AW (classic associate)	Dover AFB, Del.	C-5M, C-17
514th AMW (classic associate)	JB McGuire-Dix-Lakehurst, N.J.	C-17, KC-10
655th ISR Wing	Wright-Patterson AFB, Ohio	Intelligence
908th AW	Maxwell AFB, Ala.	C-130H
910th AW	Youngstown ARS, Ohio	C-130H
911th AW	Pittsburgh ARS, Pa.	C-17
914th ARW	Niagara Falls ARS, N.Y.	KC-135R
916th ARW	Seymour Johnson AFB, N.C.	KC-135R, KC-46A
919th Special Operations Wing (classic associate)	Duke Field, Fla.	AC-130U, C-145A, C-146, C-208, MC-130H, MQ-9, PC-12, U-28
920th Rescue Wing	Patrick SFB, Fla.	HC-130K/J, HH-60G
926th Wing (classic associate)	Nellis AFB, Nev.	F-15C, F-15E, F-16, F-22A, F-35A, MQ-9 (Creech AFB, Nev.), RQ-4 (Beale AFB, Calif.)
927th ARW (classic associate)	MacDill AFB, Fla.	KC-135R
931st ARW (classic associate)	McConnell AFB, Kan.	KC-1355R, KC-46A
932nd AW	Scott AFB, Ill.	C-40C
934th AW	Minneapolis-St. Paul ARS, Minn.	C-130H
940th ARW	Beale AFB, Calif.	KC-135R
944th FW (classic and active associate)	Luke AFB, Ariz.	A-10 (active associate Davis-Monthan AFB, Ariz.), F-15E (Seymour Johnson AFB, N.C.), F-16 (Luke AFB and Holloman AFB, Ariz.), F-35A (Luke AFB and Eglin AFB, Fla.)
960th Cyberspace Wing	JBSA-Lackland, Texas	Cyberspace operations

Source: U.S. Air Force Total Aircraft Inventory TAI as of Sept. 30, 2022



AFSOC



Air Force Special Operations Command

Headquarters: Hurlburt Field, Fla.

Date of current designation: May 22, 1990

Commander: Lt. Gen. Tony D. Bauernfeind ★★ ★

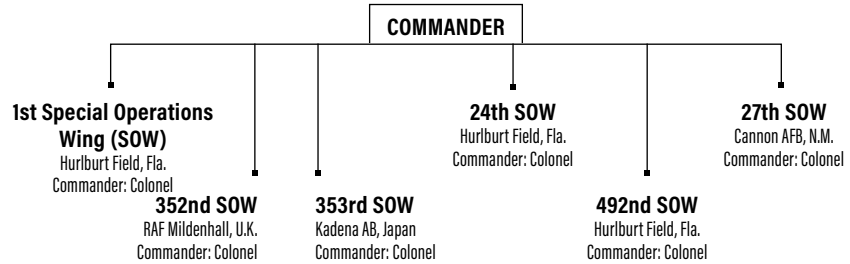


USAF

Primary Mission

Organize, train, equip, maintain, and provide special operations air power forces to combatant commanders.

AFSOC Structure



AFSOC AIRCRAFT BY TYPE	
A-29C	3
AC-130J	29
CV-22B	44
MC-130H	8
MC-130J	47
MQ-9A	49

PERSONNEL	
Active-duty USAF	16,117
Active-duty USSF	4

EQUIPMENT (TAI)	
ISR/BM/C3	49
Special Operations Forces	131

Source: U.S. Air Force Total Aircraft Inventory (TAI) as of Sept. 30, 2022

MAJOR UNITS	LOCATION	AIRCRAFT/MISSION/WEAPON
1st Special Operations Group (SOG)	Hurlburt Field, Fla.	AC-130J, CV-22, MC-130H, MQ-9, U-28A
27th SOG	Cannon AFB, N.M.	C-146A, CV-22B, MC-130J, MQ-9, U-28A
720th Special Tactics Group (STG)	Hurlburt Field, Fla.	Special tactics operations
724th STG	Pope Field, N.C.	Special tactics operations
752nd SOG	RAF Mildenhall, U.K.	CV-22, MC-130J



Airman 1st Class Bailey Wyman

A CV-22 Osprey waits for takeoff at Hurlburt Field, Fla., during a joint exercise between U.S. Air Force Special Operations Command and U.S. Naval Special Warfare personnel.



AMC



Air Mobility Command

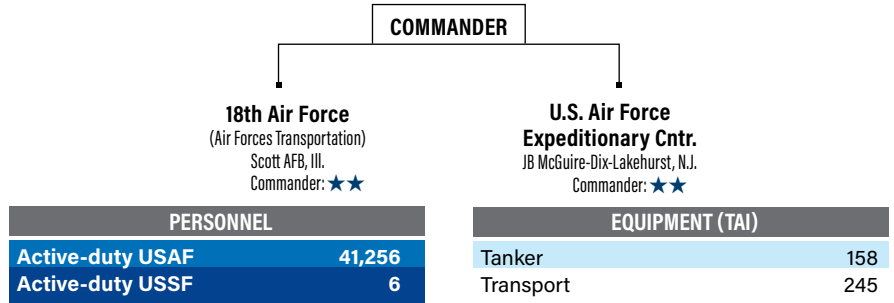
Headquarters: Scott AFB, Ill.
Date of current designation: June 1, 1992
Commander: Gen. Mike Minihan ★★★★★



Primary Mission

Organize, train, equip, maintain, and provide air mobility forces to sustain worldwide airpower operations.

AMC Structure



MAJOR UNITS	LOCATION	AIRCRAFT/MISSION/WEAPON
6th Air Refueling Wing (ARW)	MacDill AFB, Fla.	C-37, KC-135R
19th Airlift Wing (AW)	Little Rock AFB, Ark.	C-130H/J
22nd ARW	McConnell AFB, Kan.	KC-135R, KC-46A
60th Air Mobility Wing (AMW)	Travis AFB, Calif.	C-5, C-17, KC-10
62nd AW	JB Lewis-McChord, Wash.	C-17
87th Air Base Wing (ABW)	JB McGuire-Dix-Lakehurst, N.J.	Joint base facilities support
89th AW	JB Andrews, Md.	C-20B, C-32A, C-37A/B, C-40B, VC-25A
92nd ARW	Fairchild AFB, Wash.	KC-135R
305th AMW	JB McGuire-Dix-Lakehurst, N.J.	C-17, KC-10
317th AW	Dyess AFB, Texas	C-130J
375th AMW	Scott AFB, Ill.	C-21, C-40 (AA), KC-135R (AA)
436th AW	Dover AFB, Del.	C-5, C-17
437th AW	JB Charleston, S.C.	C-17A
515th Air Mobility Operations Wing (AMOW)	JB Pearl Harbor-Hickam, Hawaii	Contingency airfield operations
521st AMOW	Ramstein AB, Germany	Contingency airfield operations
618th Air Operations Center	Scott AFB, Ill.	Tanker Airlift Control Center operations
621st Contingency Response Wing	JB McGuire-Dix-Lakehurst, N.J.	Rapidly deployable bare-base operations
628th ABW	JB Charleston, S.C.	Joint base facilities support

AMC AIRCRAFT BY TYPE	
C-130J	58
C-17A	120
C-21A	14
C-32A	4
C-37A	4
C-37B	7
C-40B	4
C-5M	36
KC-10A	36
KC-13R	89
KC-135T	11
KC-46A	22
VC-25A	2

Source: U.S. Air Force Total Aircraft Inventory (TAI) as of Sept. 30, 2022



Air Transportation Specialists with the 305th Aerial Port Squadron prepare an upload for a C-17 Globemaster at Joint Base McGuire-Dix-Lakehurst, N.J.

Senior Airman Matt Porter

PACAF



Pacific Air Forces

Headquarters: JB Pearl Harbor-Hickam, Hawaii

Date of current designation: July 1, 1957

Commander: Gen. Kenneth S. Wilsbach* ★★★★★

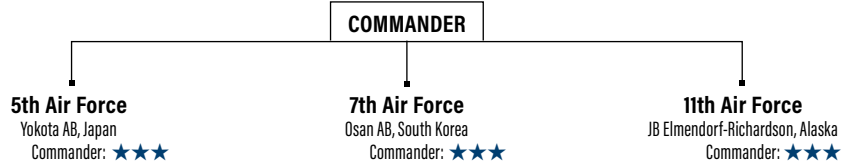


USAF

Primary Mission

Provide U.S. Pacific Command integrated expeditionary Air Force capabilities, including strike, air mobility, and rescue forces.

PACAF Structure



PERSONNEL	
Active-duty USAF	30,905
Active-duty USSF	21

EQUIPMENT (TAI)	
Fighter/Attack	320
Helicopter	13
ISR/BM/C3	4
Tanker	15
Transport	30

*Nominated to be ACC commander on May 4, 2023.

MAJOR UNITS	LOCATION	AIRCRAFT/MISSION/WEAPON
3rd Wing	JB Elmendorf-Richardson, Alaska	C-12, C-17, E-3, F-22A
8th Fighter Wing (FW)	Kunsan AB, South Korea	F-16C/D
15th Wing	JB Pearl Harbor-Hickam, Hawaii	C-17A, C-37A, C-40B, F-22A (AA), KC-135R (AA)
18th Wing	Kadena AB, Japan	E-3B/C, F-15C/D, HH-60G, KC-135R
35th FW	Misawa AB, Japan	F-16C/D, F-35A
36th Wing	Andersen AFB, Guam	Operational platform for rotating combat forces
51st FW	Osan AB, South Korea	A-10C, F-16C/D
354th FW	Eielson AFB, Alaska	F-16C/D
374th Airlift Wing	Yokota AB, Japan	C-12J, C-130H, UH-1N
607th Air Operations Center (AOC)	Osan AB, South Korea	Plan and direct air operations
611th AOC	JB Elmendorf-Richardson, Alaska	Plan and direct air operations
613th AOC	JB Pearl Harbor-Hickam, Hawaii	Plan and direct air operations
673rd Air Base Wing	JB Elmendorf-Richardson, Alaska	Joint base facilities support
Regional Support Center	JB Elmendorf-Richardson, Alaska	Remote facility operations, communications, engineering

PACAF AIRCRAFT BY TYPE

A-10C	24	E-3B	4	F-35A	54
C-12F	2	F-15C	49	HH-60G	9
C-12J	3	F-15D	4	KC-135R	11
C-130J	14	F-16C	123	KC-135T	4
C-17A	9	F-16D	12	UH-1	4
C-37A	2	F-22A	54		

Source: U.S. Air Force Total Aircraft Inventory (TAI) as of Sept. 30, 2022



Master Sgt. Mysti Bicoy/ANG

A C-17 Globemaster III from Joint Base Pearl Harbor-Hickam, Hawaii, participates in exercise AMALGAM DART 22-04 at Joint Base Elmendorf-Richardson, Alaska.



USAFE-AFA



U.S. Air Forces in Europe - Air Forces Africa

Headquarters: Ramstein AB, Germany

Date of current designation: April 20, 2012

Commander: Gen. James B. Hecker ★★★★★

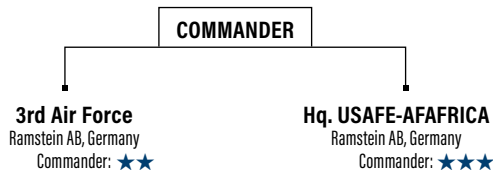


USAF

Primary Mission

Serves as the air component for U.S. European Command and U.S. Africa Command, directing air operations, including warfighting and humanitarian/peacekeeping actions, and maintains combat-ready forces for NATO responsibilities.

USAFE-AFA Structure



PERSONNEL	
Active-duty USAF	23,666
Active-duty USSF	20

EQUIPMENT (TAI)	
Fighter/Attack	129
Helicopter	5
Tanker	15
Transport	18

MAJOR UNITS	LOCATION	AIRCRAFT/MISSION/WEAPON
31st Fighter Wing (FW)	Aviano AB, Italy	F-16C/D, HH-60G
39th Air Base Wing	Incirlik AB, Turkey	Operational location for deployed U.S. and NATO forces
48th FW	RAF Lakenheath, U.K.	F-15C/D, F-15E, HH-60G
52nd FW	Spangdahlem AB, Germany	F-16J
86th Airlift Wing	Ramstein AB, Germany	C-21A, C-37A, C-130J
100th Air Refueling Wing	RAF Mildenhall, U.K.	CV-22, KC-135R/T, MC-130J, RC-135V/W
435th Air Ground Operations Wing	Ramstein AB, Germany	Battlefield airmen support and operations
501st Combat Support Wing	RAF Alconbury, U.K.	Facilitate support for seven geographically separated units
603rd Air Operations Center	Ramstein AB, Germany	Plan and direct air operations

USAFE-AFA AIRCRAFT BY TYPE

C-130J	14	F-15D	2	HH-60G	5
C-21A	5	F-15E	55	KC-135R	10
C-37A	3	F-16C	74	KC-135T	5
F-15C	18	F-16D	4		

Source: U.S. Air Force Total Aircraft Inventory (TAI) as of Sept. 30, 2022

An RC-135 Rivet Joint surveillance aircraft is refueled by a KC-135 Stratotanker from the 100th Air Refueling Wing, RAF Mildenhall, U.K., while a Norwegian Air Force F-35 Lightning aircraft flies alongside during a mission in 2022.



Courtesy photo



ANG



Air National Guard

Headquarters: Washington, D.C.
Date of current designation: Sept. 18, 1947
Director: Lt. Gen. Michael A. Loh ★★ ★



USAF

Primary Mission

Provide combat capability to the Active-duty force and security for the homeland. Support U.S. domestic and foreign humanitarian and disaster relief.

PERSONNEL	
Selected Reserve	104,984

EQUIPMENT (TAI)		
Fighter/Attack	583	Tanker 176
Helicopter	18	Transport 208
ISR/BM/C3	54	

WING (STATE)	SYSTEM/MISSION
101st Air Refueling Wing (Maine)	KC-135R, CC
102nd Intelligence Wing (Mass.)	DCGS, cyber, ISR, EISG, WXF
103rd Airlift Wing (Conn.)	C-130H
104th Fighter Wing (Mass.)	F-15C/D
105th AW (N.Y.)	C-17, EIS, WXF
106th Rescue Wing (N.Y.)	HC-130, HH-60G, GA
107th ATKW (N.Y.)	MQ-9
108th Wing (N.J.)	KC-135R, C-32B, intel, SOS
109th AW (N.Y.)	LC-130
110th Wing (Mich.)	MQ-9, AOG, C2, cyber
111th Attack Wing (Pa.)	MQ-9, cyber, EIS
113th Wing (D.C.)	C-40C, F-16C/D, WXF
114th FW (S.D.)	F-16C/D
115th FW (Wis.)	F-16C/D, RC-26B, WXF
116th Air Control Wing (Ga.)	E-8C, WXF
117th ARW (Ala.)	KC-135R, DCGS
118th Wing (Tenn.)	MQ-9, cyber
119th Wing (N.D.)	MQ-9, ISR, WXF
120th AW (Mont.)	C-130H, WXF
121st ARW (Ohio)	KC-135R, WXF
122nd FW (Ind.)	A-10C
123rd AW (Ky.)	C-130J, CRG, special tactics, WXF, intel
124th FW (Idaho)	A-10C, TACP, cyber
125th FW (Fla.)	F-15C/D, WXF
126th ARW (Ill.)	KC-135R, SCMS
127th Wing (Mich.)	A-10C, KC-135T, WXF
128th ARW (Wis.)	KC-135R
129th RQW (Calif.)	HC-130J, HH-60G, GA
130th AW (W.Va.)	C-130H, RC-26B
131st Bomb Wing (Mo.)	B-2 (CA*)
132nd Wing (Iowa)	MQ-9, cyber, ISR
133rd AW (Minn.)	C-130J, ALCF, WXF
134th ARW (Tenn.)	KC-135R
136th AW (Texas)	C-130H, ALCF, WXF
137th SOW (Okla.)	MC-12, EIS, SOS, TACP
138th FW (Okla.)	F-16C/D, EIS, WXF
139th AW (Mo.)	C-130H, AATTC (ANG/AFRC), ATCS
140th Wing (Colo.)	F-16C/D, CEF, WXF
141st ARW (Wash.)	KC-135R, CC, RC-26B, intel
142nd FW (Ore.)	F-15C/D, special tactics, WXF
143rd AW (R.I.)	C-130J, cyber
144th FW (Calif.)	F-15C/D, WXF
145th AW (N.C.)	C-17, CEF, MAFFS
146th AW (Calif.)	C-130J, ALCF, MAFFS, WXF
147th Attack Wing (Texas)	MQ-9, RC-26, TACP, EIS, WXF

WING (STATE)	SYSTEM/MISSION
148th FW (Minn.)	F-16C/D
149th FW (Texas)	F-16C/D
150th SOW (N.M.)	Special ops training (CA*), RC-26B
151st ARW (Utah)	KC-135R
152nd AW (Nev.)	C-130H, DCGS
153rd AW (Wyo.)	C-130H, MAFFS
154th Wing (Hawaii)	C-17 (CA*), F-22, KC-135R, intel, WXF
155th ARW (Neb.)	KC-135R
156th Wing (Puerto Rico)	WC-130H
157th ARW (N.H.)	KC-135R, KC-46A
158th FW (Vt.)	F-16C, F-35A, WXF
159th FW (La.)	F-15C/D, CC
161st ARW (Ariz.)	KC-135R
162nd Wing (Ariz.)	F-16, RC-26B, WXF
163rd Attack Wing (Calif.)	MQ-9, FTU, WXF
164th AW (Tenn.)	C-17A
165th AW (Ga.)	C-130H, CRTIC, AOS
166th AW (Del.)	C-130H, cyber
167th AW (W.Va.)	C-17A
168th Wing (Alaska)	KC-135R
169th FW (S.C.)	F-16C/D, ATCS
171st ARW (Pa.)	KC-135R/T, WXF
172nd AW (Miss.)	C-17, ALCF
173rd FW (Ore.)	F-15C/D, FTU, ATCS
174th Attack Wing (N.Y.)	MQ-9, RC-26B, AOC, FTU,
175th Wing (Md.)	A-10C, CEF, cyber, intel
176th Wing (Alaska)	C-17 (CA*), HC-130J, HH-60G, GA, RAOC
177th FW (N.J.)	F-16C, AOS, WXF
178th Wing (Ohio)	MQ-9, cyber, ISR, MCE
179th AW (Ohio)	C-130H
180th FW (Ohio)	F-16C/D
181st Intelligence Wing (Ind.)	DCGS, ISR, TACP, WXF
182nd AW (Ill.)	C-130H, CC, TACP
183rd Wing (Ill.)	CRF, DCGS
184th Wing (Kan.)	CACS, cyber, DCGS, ISR, NOSS, TACP
185th ARW (Iowa)	KC-135R
186th ARW (Miss.)	KC-135R, RC-26B, AOG, ATCS
187th FW (Ala.)	F-16C/D, RC-26B
188th Wing (Ark.)	MQ-9, MCE, ISR, DCGS
189th AW (Ark.)	C-130H, intel, FTU, WXF
190th ARW (Kan.)	KC-135R, CW
192nd Wing (Va.)	F-22 (CA*), cyber, DCGS
193rd SOW (Pa.)	EC-130J, AOS, CC, cyber, TACP
194th Wing (Wash.)	CC, CW
195th Wing (Calif.)	DCGS, intel

*Classic associate

