

# 2020 USAF & USSF ALMANAC

# MAJOR COMMANDS AND AIR NATIONAL GUARD

The Air Force has nine major commands and two Air Reserve Components. (Air Force Reserve Command is both a majcom and an ARC.) In late 2019, Air Force Space Command was redesignated U.S. Space Force, a separate military branch under the Department of the Air Force.

**A**s significant subdivisions of the Air Force, major commands conduct a considerable part of the service's mission and are directly subordinate to Headquarters USAF.

Majcoms are organized on a functional basis in the U.S. and on a geographic basis overseas. In addition to accomplishing designated portions of USAF's worldwide activities, they organize, administer, equip, and train their subordinate elements.

The majcom sits atop a skip-echelon staffing structure, which means every other organizational level (i.e., majcom, wing, and squadron) will have a full range of staff functions. The other organizations (NAF, group, and flight) are tactical, mission-centered echelons. These tactical echelons are designed to increase operational effectiveness without the burden of additional staff functions.

## AFGSC



### Air Force Global Strike Command

**Headquarters:** Barksdale AFB, La.

**Date of current designation:** Aug. 7, 2009

**Commander:** Gen. Timothy M. Ray

#### Primary Mission

Organize, train, equip, maintain, and provide ICBM forces and long-range bomber forces to combatant commanders; provide installation mission support.

#### AFGSC Structure



AFGS AIRCRAFT BY TYPE	
B-1B	60
B-2A	19
B-52H	56
E-4B	4
T-38A	14
UH-1N	25

PERSONNEL
<b>Active Duty</b>
28,345

EQUIPMENT (TAI)	
Bomber	135
Helicopter	25
ICBM	400
ISR/BM/C3	4
Trainer	14

MAJOR UNITS	LOCATION	AIRCRAFT/MISSION/WEAPON
2nd Bomb Wing (BW)	Barksdale AFB, La.	B-52H
5th BW	Minot AFB, N.D.	B-52H
7th BW	Dyess AFB, Texas	B-1B
28th BW	Ellsworth AFB, S.D.	B-1B
90th Missile Wing (MW)	F. E. Warren AFB, Wyo.	Minuteman III, UH-1N
91st MW	Minot AFB, N.D.	Minuteman III, UH-1N
341st MW	Malmstrom AFB, Mont.	Minuteman III, UH-1N
377th Air Base Wing	Kirtland AFB, N.M.	Nuclear operations, expeditionary force training, base support
509th BW	Whiteman AFB, Mo.	B-2A, T-38C
595th Command and Control Group	Offutt AFB, Neb.	Command and control, E-4B

Source: TAI as of Sept. 30, 2019.

# ACC



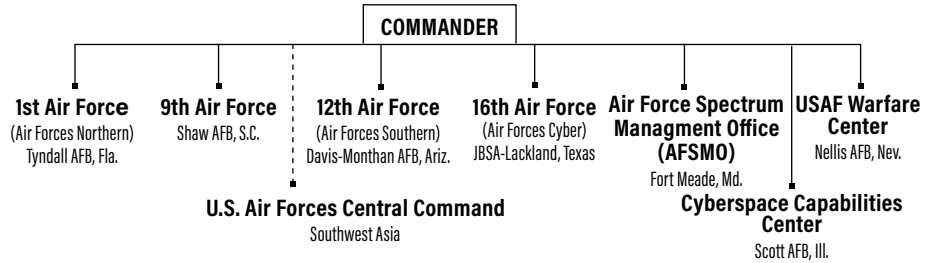
## Air Combat Command

**Headquarters:** JB Langley-Eustis, Va.  
**Date of current designation:** June 1, 1992  
**Commander:** Gen. James M. "Mike" Holmes

### Primary Mission

Primary force provider of combat air power—fighter, conventional bomber, reconnaissance, battle management, and electronic combat aircraft—to combatant commands. Provide command, control, communications, and intelligence (C3I) systems. Conduct global information operations.

### ACC Structure



PERSONNEL
<b>Active Duty</b>
78,246

EQUIPMENT (TAI)	
Fighter/Attack	688
Helicopter	39
ISR/BM/C3	344
Trainer	48

MAJOR UNITS	LOCATION	AIRCRAFT/MISSION/WEAPON
1st Fighter Wing (FW)	JB Langley-Eustis, Va.	F-22, T-38A
4th FW	Seymour Johnson AFB, N.C.	F-15E
9th Reconnaissance Wing	Beale AFB, Calif.	RQ-4, T-38A, U-2
20th FW	Shaw AFB, S.C.	F-16CM
23rd Wing	Moody AFB, Ga.	A-10C, HC-130J, HH-60G
53rd Wing	Eglin AFB, Fla.	A-10C, BQM-167A, E-9A, F-15C/D/E, F-16C/D, F-22A, F-35A, HC-130J, HH-60G, MQ-1, MQ-9, QF-4, QF-16, RQ-4, U-2
55th Wing	Offutt AFB, Neb.	EC-130H, OC-135B, RC-135S/U/V/W, TC-135S/W, WC-135
57th Wing	Nellis AFB, Nev.	A-10C, EC-130, F-15, F-15E, F-16, F-22A, F-35A, HH-60G (23rd Wing), MQ-9
67th Cyberspace Wing	JBSA-Lackland, Texas	Cyberspace operations
70th ISR Wing (ISRW)	Fort Meade, Md.	Cryptologic operations
93rd Air Ground Operations Wing	Moody AFB, Ga.	Battlefield airmen operations, support
99th Air Base Wing (ABW)	Nellis AFB, Nev.	Base support
319th Reconnaissance Wing	Grand Forks AFB, N.D.	Base support
325th FW	Tyndall AFB, Fla.	F-22A
355th Wing	Davis-Monthan AFB, Ariz.	A-10, EC-130H, (55th Wing), F-16CG, HC-130J, HH-60G (23rd Wing)
363rd ISRW	JB Langley-Eustis, Va.	Multi-intelligence analysis, targeting
366th FW	Mountain Home AFB, Idaho	F-15E
388th FW	Hill AFB, Utah	F-16C/D, F-35A
432nd Wing	Creech AFB, Nev.	MQ-1, MQ-9, RQ-170
480th ISRW	JB Langley-Eustis, Va.	DCGS, cyber ISR, CFACC support, signals intelligence integration
461st Air Control Wing (ACW)	Robins AFB, Ga.	E-8C (AA)
505th Command and Control Wing	Hurlburt Field, Fla.	Command and control operational-level tactics, testing, training
552nd ACW	Tinker AFB, Okla.	E-3B/C/G
557th Weather Wing	Offutt AFB, Neb.	Weather information
601st Air Operations Center	Tyndall AFB, Fla.	Plan and direct air operations
624th Operations Center	JBSA-Lackland, Texas	Plan and direct cyber operations
633rd ABW	JB Langley-Eustis, Va.	Joint base facilities support
688th Cyberspace Wing	JBSA-Lackland, Texas	Information operations, engineering installations
Air Force Rescue Coordination Center	Tyndall AFB, Fla.	National search and rescue coordination
Air Force Technical Applications Center	Patrick AFB, Fla.	Nuclear treaty monitoring, nuclear event detection

### ACC AIRCRAFT BY TYPE

A-10	116	F-16C	152	RC-135U	2
AT-38	6	F-16D	19	RC-135V	8
E-11	4	F-22A	115	RC-135W	9
E-3B	7	F-35A	107	RQ-4B	33
E-3G	20	HC-130J	16	T-38A	39
EC-130	11	HH-60G	39	TC-135W	3
F-15C	18	MQ-1	7	TU-2S	4
F-15D	3	MQ-9	178		
F-15E	158	RC-135S	3		

Source: TAI as of Sept. 30, 2019.

# AETC



## Air Education and Training Command

**Headquarters:** JBSA-Randolph, Texas

**Date of current designation:** July 1, 1993

**Commander:** Lt. Gen. Marshall B. "Brad" Webb

### Primary Mission

Recruit, train, and educate airmen through basic military training, initial and advanced technical training, and professional military education.

### AETC Structure



PERSONNEL
<b>Active Duty</b>
61,755

EQUIPMENT (TAI)	
Fighter/Attack	226
Helicopter	22
Tanker	19
Trainer	1,131
Transport	46

MAJOR UNITS	LOCATION	AIRCRAFT/MISSION/WEAPON
12th Flying Training Wing (FTW)	JBSA-Randolph, Texas	T-1A, T-6A, T-38C (CSO at NAS Pensacola, Fla.)
14th FTW	Columbus AFB, Miss.	T-1A, T-6A, T-38C (A-29 at Moody AFB, Ga.)
17th Training Wing (TRW)	Goodfellow AFB, Texas	Technical training
33rd Fighter Wing (FW)	Eglin AFB, Fla.	F-35
37th TRW	JBSA-Lackland, Texas	Basic military and technical training
42nd Air Base Wing (ABW)	Maxwell AFB, Ala.	Base support
47th FTW	Laughlin AFB, Texas	T-1A, T-6A, T-38C
49th Wing	Holloman AFB, N.M.	MQ-1, MQ-9, QF-16
56th FW	Luke AFB, Ariz.	F-16, F-35
58th Special Operations Wing	Kirtland AFB, N.M.	CV-22, HC-130J/P/N, HH-60G, MC-130H/J/P, UH-1N, TH-1H
59th Medical Wing	JBSA-Lackland, Texas	Wilford Hall Ambulatory Surgical Center
71st FTW	Vance AFB, Okla.	T-1A, T-6A, T-38C
80th FTW	Sheppard AFB, Texas	T-6A, T-38C
81st TRW	Keesler AFB, Miss.	Technical training
82nd TRW	Sheppard AFB, Texas	Technical training
97th Air Mobility Wing	Altus AFB, Okla.	C-17, KC-135R
314th Air Mobility Wing	Little Rock AFB, Ark.	C-130J
502nd ABW	JBSA-Fort Sam Houston, Texas	JBSA facilities support
Air Force Profession of Arms Center of Excellence	JBSA-Randolph, Texas	Professional training
Air Force Institute of Technology	Wright-Patterson AFB, Ohio	Postgraduate education
Carl A. Spaatz Center for Officer Education	Maxwell AFB, Ala.	Officer professional military education (PME)
Curtis E. LeMay Center for Doctrine Dev. & Education	Maxwell AFB, Ala.	Air Force doctrine development
Ira C. Eaker Center for Leadership Dev.	Maxwell AFB, Ala.	Professional and technical continuing education
Jeanne M. Holm Center for Officer Accessions and Citizen Development	Maxwell AFB, Ala.	Officer training, ROTC and JROTC oversight
Muir S. Fairchild Research Information Center	Maxwell AFB, Ala.	Information resources
Thomas N. Barnes Center for Enlisted Education	Maxwell AFB, Ala.	Enlisted PME

AETC AIRCRAFT BY TYPE					
C-130J	14	KC-135R	19	TG-15A	2
C-17A	17	MC-130J	4	TG-15B	3
CV-22B	8	T-1A	178	TG-16A	19
F-16C	83	T-6A	443	TH-1H	28
F-16D	51	T-38C	427	UH-1N	10
F-35A	92	T-41D	4	UV-18B	3
HC-130J	3	T-51A	3		
HH-60G	12	T-53A	24		

Source: TAI as of Sept. 30, 2019.

# AFMC



## Air Force Materiel Command

**Headquarters:** Wright-Patterson AFB, Ohio

**Date of current designation:** July 1, 1992

**Commander:** Gen. Arnold W. Bunch Jr.

### Primary Mission

Research, develop, procure, test, and sustain USAF weapon systems.

PERSONNEL	
<b>Active Duty</b>	
16,718	
EQUIPMENT (TAI)	
Bomber	5
Fighter/Attack	48
Helicopter	5
ISR/BM/C3	19
Tanker	1
Trainer	15
Transport	24

### AFMC Structure



	MAJOR UNITS	LOCATION	AIRCRAFT/MISSION/WEAPON
AFIMSC	Air Force Civil Engineer Center	JBSA-Lackland, Texas	Installation support (civil engineering)
	Air Force Financial Management Center of Expertise	Buckley AFB, Colo.	Installation support (financial analysis)
	Air Force Financial Services Center	Ellsworth AFB, S.D.	Installation support (payment processing)
	Air Force Installation Contracting Agency	Wright-Patterson AFB, Ohio	Enterprise contracting support
	Air Force Security Forces Center	JBSA-Lackland, Texas	Installation support (security forces programs)
	Air Force Services Activity	JBSA-Lackland, Texas	Installation support (lodging, recreation)
AFLCMC	Air Force Program Executive Officer–Agile Combat Support	Wright-Patterson AFB, Ohio	Systems acquisition
	AFPEO–Armament	Eglin AFB, Fla.	Systems acquisition
	AFPEO–Battle Management	Hanscom AFB, Mass.	Systems acquisition
	AFPEO–Business and Enterprise Systems	Maxwell AFB-Gunter Annex, Ala.	Systems acquisition
	AFPEO–C3I and Networks	Hanscom AFB, Mass.	Systems acquisition
	AFPEO–Fighters and Bombers	Wright-Patterson AFB, Ohio	Systems acquisition
	AFPEO–ISR and Special Operations Forces	Wright-Patterson AFB, Ohio	Systems acquisition
	AFPEO–Mobility	Wright-Patterson AFB, Ohio	Systems acquisition
	AFPEO–Presidential Aircraft Recapitalization	Wright-Patterson AFB, Ohio	Systems acquisition
	AFPEO–Tanker	Wright-Patterson AFB, Ohio	Systems acquisition
AFNWC	88th Air Base Wing (ABW)	Wright-Patterson AFB, Ohio	Base support
	AFPEO–Nuclear Command, Control, and Communications	Hanscom AFB, Mass.	Systems acquisition
AFRL	AFPEO–Strategic Systems	Kirtland AFB, N.M.	Systems acquisition
	Aerospace Systems	Wright-Patterson AFB, Ohio	Research and development (R&D)
	Air Force Office of Scientific Research	Arlington, Va.	Research
	Air Force Strategic Development Planning and Experimentation Office	Wright-Patterson AFB, Ohio	R&D
	Directed Energy	Kirtland AFB, N.M.	R&D
	Information	Rome, N.Y.	R&D
	Materials and Manufacturing	Wright-Patterson AFB, Ohio	R&D
	Munitions	Eglin AFB, Fla.	R&D
	Sensors	Wright-Patterson AFB, Ohio	R&D
	Space Vehicles	Kirtland AFB, N.M.	R&D
AFSC	711th Human Performance Wing	Wright-Patterson AFB, Ohio	Airman performance research and education
	Ogden Air Logistics Complex (ALC)	Hill AFB, Utah	Weapons sustainment
	Oklahoma City ALC	Tinker AFB, Okla.	Weapons sustainment
	Warner Robins ALC	Robins AFB, Ga.	Weapons sustainment
	72nd ABW	Tinker AFB, Okla.	Base support
	75th ABW	Hill AFB, Utah	Base and Utah Test and Training Range support
	78th ABW	Robins AFB, Ga.	Base support
	448th Supply Chain Management Wing	Tinker AFB, Okla.	Depot line repairables and consumables
635th Supply Chain Operations Wing	Scott AFB, Ill.	Global sustainment support	
AFTC	Arnold Engineering Development Complex	Arnold AFB, Tenn.	Flight, space, and missile ground testing
	96th Test Wing (TW)	Eglin AFB, Fla.	Aircraft/system testing, base & range support
	412th TW	Edwards AFB, Calif.	Aircraft/system testing, base & range support

Source: TAI as of Sept. 30, 2019.

# AFRC



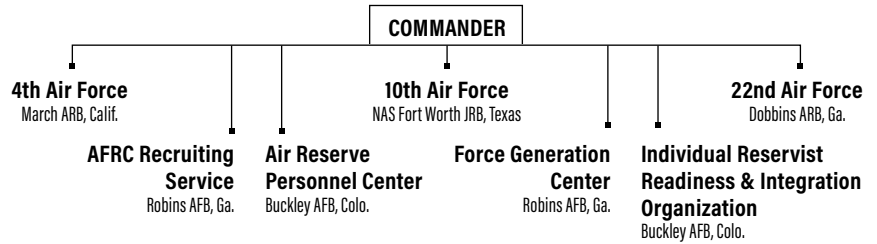
## Air Force Reserve Command

**Headquarters:** Robins AFB, Ga.

**Date of current designation:** Feb. 17, 1997

**Commander:** Lt. Gen. Richard W. Scobee

### AFRC Structure



### Primary Mission

Provide strike, air mobility, special operations forces, rescue, aeromedical evacuation, aerial firefighting and spraying, weather reconnaissance, cyberspace operations, ISR, space, flying training, and other capabilities to support the Active-duty force and assist with domestic and foreign disaster relief.

PERSONNEL	
<b>Selected Reserve</b>	65,508

AFRC AIRCRAFT BY TYPE			EQUIPMENT (TAI)	
A-10	55	C-5M	Bomber	18
B-52H	18	F-16C	Fighter/Attack	109
C-130H	42	F-16D	Helicopter	15
C-130J	10	HH-60G	ISR/BM/C3	10
C-17A	26	KC-135R	Tanker	74
C-40	4	WC-130J	Transport	98

MAJOR UNITS	LOCATION	AIRCRAFT/MISSION/WEAPON
94th Airlift Wing (AW)	Dobbins ARB, Ga.	C-130H
301st Fighter Wing (FW)	NAS JRB Fort Worth, Texas	F-16 (Texas)
302nd AW	Peterson AFB, Colo.	C-130H (including Modular Airborne Firefighting System)
307th Bomb Wing	Barksdale AFB, La.	B-52H
310th Space Wing	Schriever AFB, Colo.	Space control and operations and warning, information operations
315th AW (classic associate)	JB Charleston, S.C.	C-17
349th Air Mobility Wing (classic associate)	Travis AFB, Calif.	C-5, C-17, KC-10
403rd Wing	Keesler AFB, Miss.	C-130J, WC-130J
419th FW (classic associate)	Hill AFB, Utah	F-35A
433rd AW	JBSA-Lackland, Texas	C-5M, formal training unit
434th Air Refueling Wing (ARW)	Grissom ARB, Ind.	KC-135R
439th AW	Westover ARB, Mass.	C-5M
442nd FW	Whiteman AFB, Mo.	A-10C
445th AW	Wright-Patterson AFB, Ohio	C-17
446th AW (classic associate)	JB Lewis-McChord, Wash.	C-17
452nd AMW	March ARB, Calif.	C-17, KC-135R
459th ARW	JB Andrews, Md.	KC-135R
482nd FW	Homestead ARB, Fla.	F-16C
507th ARW	Tinker AFB, Okla.	KC-135R
512th AW (classic associate)	Dover AFB, Del.	C-5M, C-17
514th AMW (classic associate)	JB McGuire-Dix-Lakehurst, N.J.	C-17, KC-10
655th ISR Wing	Wright-Patterson AFB, Ohio	Intelligence
908th AW	Maxwell AFB, Ala.	C-130H
910th AW	Youngstown ARS, Ohio	C-130H
911th AW	Pittsburgh ARS, Pa.	Converting from C-130 to C-17
914th ARW	Niagara Falls ARS, N.Y.	KC-135R
916th ARW	Seymour Johnson AFB, N.C.	KC-135R
919th Special Operations Wing (classic associate)	Duke Field, Fla.	AC-130U, C-145A, C-146, C-208 MC-130H, MQ-9, PC-12, U-28
920th Rescue Wing	Patrick AFB, Fla.	HC-130N/P, HH-60G
926th Wing (classic associate)	Nellis AFB, Nev.	F-15C, F-15E, F-16, F-22A, F-35A, MQ-9 (Creech AFB, Nev.), RQ-4 (Beale AFB, Calif.)
927th ARW (classic associate)	MacDill AFB, Fla.	KC-135R
931st ARW (classic associate)	McConnell AFB, Kan.	KC-1355R, KC-46A
932nd AW	Scott AFB, Ill.	C-40C
934th AW	Minneapolis-St. Paul ARS, Minn.	C-130H
940th ARW	Beale AFB, Calif.	KC-135R
944th FW (classic and active associate)	Luke AFB, Ariz.	A-10 (active associate-Davis Monthan AFB, Ariz.) F-15E (Seymour Johnson AFB, N.C.), F-16 (Luke AFB and Holloman AFB, Ariz.), F-35A (Luke AFB and Eglin AFB, Fla.)
960th Cyberspace Wing	JBSA-Lackland, Texas	Cyberspace operations

Classic associate: Active-duty unit owns aircraft.

Source: TAI as of Sept. 30, 2019.



# AFSOC



## Air Force Special Operations Command

**Headquarters:** Hurlburt Field, Fla.

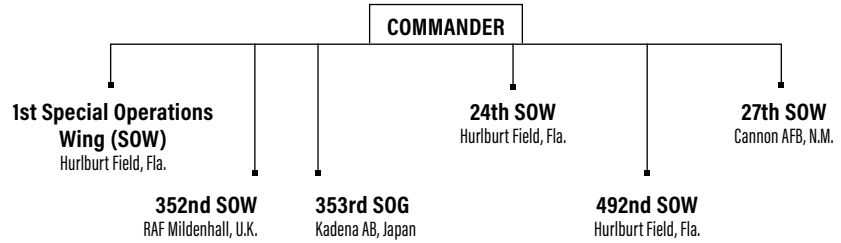
**Date of current designation:** May 22, 1990

**Commander:** Lt. Gen. James C. "Jim" Slife

### Primary Mission

Organize, train, equip, maintain, and provide special operations air power forces to combatant commanders.

### AFSOC Structure



#### AFSOC AIRCRAFT BY TYPE

AC-130J	15
AC-130U	7
AC-130W	10
C-130H	2
CV-22B	42
MC-130H	16
MC-130J	42
MQ-9A	51

PERSONNEL
<b>Active Duty</b>
15,352

EQUIPMENT (TAI)	
ISR/BM/C3	58
Special Operations Forces	127

MAJOR UNITS	LOCATION	AIRCRAFT/MISSION/WEAPON
1st Special Operations Group (SOG)	Hurlburt Field, Fla.	AC-130J/U, CV-22, MC-130 H/P, MQ-9, U-28A
27th SOG	Cannon AFB, N.M.	AC-130W, C-146A, CV-22B, MC-130J, MQ-9, U-28A
551st SOS	Cannon AFB, N.M.	AC-130H/W, CV-22, MC-130J, MQ-9
720th Special Tactics Group (STG)	Hurlburt Field, Fla.	Special tactics operations
724th STG	Pope Field, N.C.	Special tactics operations
752nd SOG	RAF Mildenhall, U.K.	CV-22, MC-130J

Source: TAI as of Sept. 30, 2019.



Brian Grady tests the power mechanism of a simulated improvised explosive device at Cannon Air Force Base, N.M.

Senior Airman Gage Daniel

# AMC



## Air Mobility Command

**Headquarters:** Scott AFB, Ill.

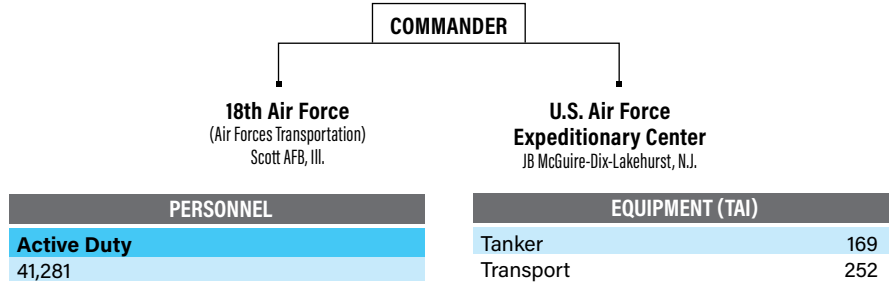
**Date of current designation:** June 1, 1992

**Commander:** Gen. Maryanne Miller

### Primary Mission

Organize, train, equip, maintain, and provide air mobility forces to sustain worldwide air power operations.

### AMC Structure



MAJOR UNITS	LOCATION	AIRCRAFT/MISSION/WEAPON
6th Air Refueling Wing (ARW)	MacDill AFB, Fla.	C-37, KC-135R
19th Airlift Wing (AW)	Little Rock AFB, Ark.	C-130H/J
22nd ARW	McConnell AFB, Kan.	KC-135R
60th Air Mobility Wing (AMW)	Travis AFB, Calif.	C-5, C-17, KC-10
62nd AW	JB Lewis-McChord, Wash.	C-17
87th Air Base Wing (ABW)	JB McGuire-Dix-Lakehurst, N.J.	Joint base facilities support
89th AW	JB Andrews, Md.	C-20B, C-32A, C-37A/B, C-40B, VC-25A
92nd ARW	Fairchild AFB, Wash.	KC-135R
305th AMW	JB McGuire-Dix-Lakehurst, N.J.	C-17, KC-10
317th AW	Dyess AFB, Texas	C-130J
375th AMW	Scott AFB, Ill.	C-21, C-40 (AA), KC-135R (AA), NC-21
436th AW	Dover AFB, Del.	C-5, C-17
437th AW	JB Charleston, S.C.	C-17A
515th Air Mobility Operations Wing (AMOW)	JB Pearl Harbor-Hickam, Hawaii	Contingency airfield operations
521st AMOW	Ramstein AB, Germany	Contingency airfield operations
618th Air Operations Center	Scott AFB, Ill.	Tanker Airlift Control Center operations
621st Contingency Response Wing	JB McGuire-Dix-Lakehurst, N.J.	Rapidly deployable bare-base operations
628th ABW	JB Charleston, S.C.	Joint base facilities support

AMC AIRCRAFT BY TYPE	
C-130J	64
C-17A	120
C-21A	14
C-32A	4
C-37A	5
C-37B	3
C-40A	4
C-5M	36
KC-10	59
KC-135R	85
KC-135T	25
VC-25A	2

Source: TAI as of Sept. 30, 2019.



Senior Airman Sheldrick Long, 86th Maintenance Squadron, polishes a C-130J Super Hercules aircraft part at Ramstein Air Base, Germany.

Airman 1st Class Taylor Slater

# PACAF



## Pacific Air Forces

**Headquarters:** JB Pearl Harbor-Hickam, Hawaii

**Date of current designation:** July 1, 1957

**Commander:** Gen. Charles Q. Brown Jr.\*

### Primary Mission

Provide U.S. Pacific Command integrated expeditionary Air Force capabilities, including strike, air mobility, and rescue forces.

### PACAF Structure



PERSONNEL	EQUIPMENT (TAI)
<b>Active Duty</b> 29,203	Fighter/Attack 257
	Helicopter 13
	ISR/BM/C3 4
	Tanker 11
	Transport 29

MAJOR UNITS	LOCATION	AIRCRAFT/MISSION/WEAPON
3rd Wing	JB Elmendorf-Richardson, Alaska	C-12, C-17, E-3, F-22A
8th Fighter Wing (FW)	Kunsan AB, South Korea	F-16C/D
15th Wing	JB Pearl Harbor-Hickam, Hawaii	C-17A, C-37A, C-40B, F-22A (AA), KC-135R (AA)
18th Wing	Kadena AB, Japan	E-3B/C, F-15C/D, HH-60G, KC-135R
35th FW	Misawa AB, Japan	F-16C/D
36th Wing	Andersen AFB, Guam	Operational platform for rotating combat forces
51st FW	Osan AB, South Korea	A-10C, F-16C/D
354th FW	Eielson AFB, Alaska	F-16C/D
374th Airlift Wing	Yokota AB, Japan	C-12J, C-130H, UH-1N
607th Air Operations Center (AOC)	Osan AB, South Korea	Plan and direct air operations
611th AOC	JB Elmendorf-Richardson, Alaska	Plan and direct air operations
613th AOC	JB Pearl Harbor-Hickam, Hawaii	Plan and direct air operations
673rd Air Base Wing	JB Elmendorf-Richardson, Alaska	Joint base facilities support
Regional Support Center	JB Elmendorf-Richardson, Alaska	Remote facility operations, communications, engineering

### PACAF AIRCRAFT BY TYPE

A-10C	24	E-3B	3	F-22A	47
C-12F	2	E-3C	1	HH-60G	9
C-12J	3	F-15C	49	KC-135R	11
C-130J	14	F-15D	4	UH-1	4
C-17A	9	F-16C	121		
C-37A	1	F-16D	12		

Source: TAI as of Sept. 30, 2019.



Senior Airman John Linzmeier/ANG

**F-22 Raptors, a KC-135 Stratotanker, and a C-17 Globemaster III taxi on the runway at Honolulu International Airport, Hawaii.**

\*Confirmed to be USAF Chief of Staff on June 9, 2020.



# USAFE-AFA



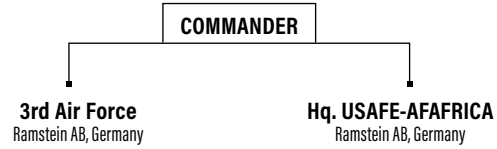
## U.S. Air Forces in Europe - Air Forces Africa

**Headquarters:** Ramstein AB, Germany  
**Date of current designation:** April 20, 2012  
**Commander:** Gen. Jeffrey L. Harrigan

### Primary Mission

Serves as the air component for U.S. European Command and U.S. Africa Command, directing air operations, including warfighting and humanitarian/peacekeeping actions, and maintains combat-ready forces for NATO responsibilities.

### USAFE Structure



PERSONNEL
<b>Active Duty</b>
23,074

EQUIPMENT (TAI)	
Fighter/Attack	155
Helicopter	5
Tanker	15
Transport	22

MAJOR UNITS	LOCATION	AIRCRAFT/MISSION/WEAPON
31st Fighter Wing (FW)	Aviano AB, Italy	F-16C/D, HH-60G
39th Air Base Wing	Incirlik AB, Turkey	Operational location for deployed U.S. and NATO forces
48th FW	RAF Lakenheath, U.K.	F-15C/D, F-15E, HH-60G
52nd FW	Spangdahlem AB, Germany	F-16C/D
86th Airlift Wing	Ramstein AB, Germany	C-21, C-37A, C-40B, C-130J
100th Air Refueling Wing	RAF Mildenhall, U.K.	CV-22, KC-135R, MC-130J, RC-135V/W
435th Air Ground Operations Wing	Ramstein AB, Germany	Battlefield airmen support and operations
501st Combat Support Wing	RAF Alconbury, U.K.	Facilitates support for seven geographically separated units
603rd Air Operations Center	Ramstein AB, Germany	Plan and direct air operations

USAFE-AFA AIRCRAFT BY TYPE					
C-130J	14	F-15D	2	HH-60G	5
C-21A	5	F-15E	55	KC-135R	13
C-37A	3	F-16C	75	KC-135T	2
F-15C	19	F-16D	4		

Source: TAI as of Sept. 30, 2019.

**Airman 1st Class Spencer Hartung, 52nd Logistics Readiness Squadron, positions a fuel line during an F-16 "hot pit" refuel at Spangdahlem Air Base, Germany.**



Staff Sgt. Preston Cherry

# ANG



## Air National Guard

**Headquarters:** Washington, D.C.

**Date of current designation:** Sept. 18, 1947

**Director:** Lt. Gen. L. Scott Rice

### Primary Mission

Provide combat capability to the Active-duty force and security for the homeland. Support U.S. domestic and foreign humanitarian and disaster relief.

PERSONNEL			
<b>Selected Reserve</b>			
105,637			
EQUIPMENT (TAI)			
Fighter/Attack	577	Tanker	164
Helicopter	23	Transport	209
ISR/BM/C3	84		

WING (STATE)	SYSTEM/MISSION
101st Air Refueling Wing (Maine)	KC-135R, CC
102nd Intelligence Wing (Mass.)	DCGS, cyber, ISR, EISG, WXF
103rd Airlift Wing (Conn.)	C-130H
104th Fighter Wing (Mass.)	F-15C/D
105th AW (N.Y.)	C-17, EIS, WXF
106th Rescue Wing (N.Y.)	HC-130, HH-60G, GA
107th ATKW (N.Y.)	MQ-9
108th Wing (N.J.)	KC-135R, C-32B, intel, SOS
109th AW (N.Y.)	LC-130
110th Wing (Mich.)	MQ-9, AOG, C2, cyber
111th Attack Wing (Pa.)	MQ-9, cyber, EIS
113th Wing (D.C.)	C-40C, F-16C/D, WXF
114th FW (S.D.)	F-16C/D
115th FW (Wis.)	F-16C/D, RC-26B, WXF
116th Air Control Wing (Ga.)	E-8C, WXF
117th ARW (Ala.)	KC-135R, DCGS
118th Wing (Tenn.)	MQ-9, cyber
119th Wing (N.D.)	MQ-9, ISR, WXF
120th AW (Mont.)	C-130H, WXF
121st ARW (Ohio)	KC-135R, WXF
122nd FW (Ind.)	A-10C
123rd AW (Ky.)	C-130H, CRG, special tactics, WXF, intel
124th FW (Idaho)	A-10C, TACP, cyber
125th FW (Fla.)	F-15C/D, WXF
126th ARW (Ill.)	KC-135R, SCMS
127th Wing (Mich.)	A-10C, KC-135T, WXF
128th ARW (Wis.)	KC-135R
129th RQW (Calif.)	MC-130P, HH-60G, GA
130th AW (W.Va.)	C-130H, RC-26B
131st Bomb Wing (Mo.)	B-2 (CA*)
132nd Wing (Iowa)	MQ-9, RC-26B, cyber, ISR
133rd AW (Minn.)	C-130H, ALCF, WXF
134th ARW (Tenn.)	KC-135R
136th AW (Texas)	C-130H, ALCF, WXF
137th SOW (Okla.)	MC-12, EIS, SOS, TACP
138th FW (Okla.)	F-16C/D, EIS, WXF
139th AW (Mo.)	C-130H, AATC (ANG/AFRC), ATCS
140th Wing (Colo.)	F-16C/D, CEF, WXF
141st ARW (Wash.)	KC-135R, CC, RC-26B, intel
142nd FW (Ore.)	F-15C/D, special tactics, WXF
143rd AW (R.I.)	C-130J, cyber
144th FW (Calif.)	F-15C/D, RC-26B, WXF
145th AW (N.C.)	C-130H, CEF, MAFFS
146th AW (Calif.)	C-130J, ALCF, MAFFS, WXF
147th Reconnaissance Wing (Texas)	MQ-1B, RC-26, TACP, EIS, WXF
148th FW (Minn.)	F-16C/D

WING (STATE)	SYSTEM/MISSION
149th FW (Texas)	F-16C/D
150th SOW (N.M.)	Special ops training (CA*), RC-26B
151st ARW (Utah)	KC-135R
152nd AW (Nev.)	C-130H, DCGS
153rd AW (Wyo.)	C-130H, MAFFS
154th Wing (Hawaii)	C-17 (CA*), F-22, KC-135R, intel, WXF
155th ARW (Neb.)	KC-135R
156th AW (Puerto Rico)	WC-130H
157th ARW (N.H.)	KC-135R
158th FW (Vt.)	F-16C, WXF
159th FW (La.)	F-15C/D, CC
161st ARW (Ariz.)	KC-135R
162nd Wing (Ariz.)	F-16, RC-26B, WXF
163rd Attack Wing (Calif.)	MQ-9, FTU, WXF
164th AW (Tenn.)	C-17A
165th AW (Ga.)	C-130H, CRTIC, AOS
166th AW (Del.)	C-130H, cyber
167th AW (W.Va.)	C-17A
168th ARW (Alaska)	KC-135R
169th FW (S.C.)	F-16C/D, ATCS
171st ARW (Pa.)	KC-135R/T, WXF
172nd AW (Miss.)	C-17, ALCF
173rd FW (Ore.)	F-15C/D, FTU, ATCS
174th Attack Wing (N.Y.)	MQ-9, RC-26B, AOC, FTU,
175th Wing (Md.)	A-10C, CEF, cyber, intel
176th Wing (Alaska)	C-17 (CA*), HC-130J, HH-60G, GA, RAOC
177th FW (N.J.)	F-16C, AOS, WXF
178th Wing (Ohio)	MQ-1, cyber, MCE, ISR
179th AW (Ohio)	C-130H
180th FW (Ohio)	F-16C/D
181st IW (Ind.)	DCGS, ISR, TACP, WXF
182nd AW (Ill.)	C-130H, CC, TACP
183rd Wing (Ill.)	CRF, DCGS
184th IW (Kan.)	CACS, cyber, DCGS, ISR, NOSS, TACP
185th ARW (Iowa)	KC-135R
186th ARW (Miss.)	KC-135R, RC-26B, AOG, ATCS
187th FW (Ala.)	F-16C/D, RC-26B
188th Wing (Ark.)	MQ-9, MCE, ISR, DCGS
189th AW (Ark.)	C-130H, intel, FTU, WXF
190th ARW (Kan.)	KC-135R, CW
192nd FW (Va.)	F-22 (CA*), cyber, DCGS
193rd SOW (Pa.)	EC-130J, AOS, CC, cyber, TACP
194th Regional Support Wing (Wash.)	CC, CW
195th Wing (Calif.)	DCGS, intel

\*Classic associate  
Source: TAI as of Sept. 30, 2019.