

COUNTY WAS MOVING IN THE RIGHT DIRECTION SINCE 2012 BUT

IT TOOK A CRISIS TO SET UP!

COUNTY CITIZENS COUNCIL

AFTER 2020 THE WORK AHEAD IS VERY CLEAR

E=mc
EINSTEIN KNEW THAT THE EVERY CRISIS WAS AN OPPORTUNITY

POWER SHIFT: Health Systems working Together for better outcomes.

JULIE MORITA



patience, this isn't happening over night.

EDDIE TAYLOR



cuyahoga county

HEIDI GULLETT

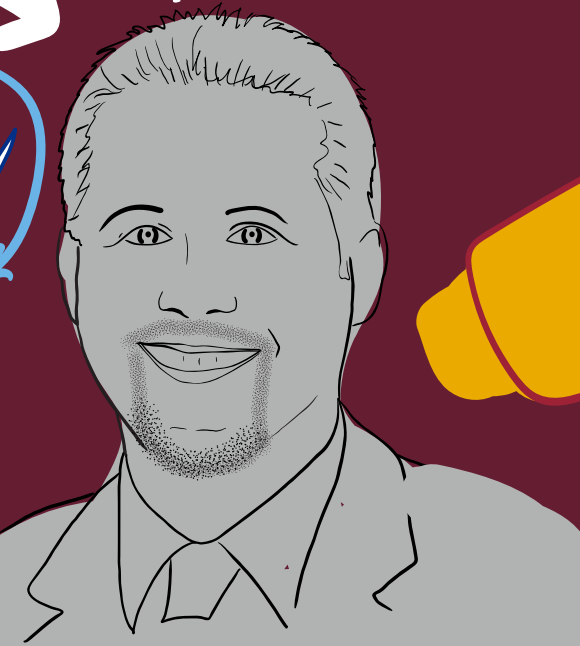


LILLIANN M. PAINE



milwaukee

ANDRÉS E. GONZÁLEZ



IT'S BEEN A DECADE OF NAMING

IT TOOK TIME GETTING PEOPLE TO LISTEN

LAKE ERIE? LAKE EAR-Y?

CUYAHOGA PLACE MATTERS MOVEMENT

COMMON GROUND DISCUSSIONS

COUNTY LEADERSHIP INVOLVED

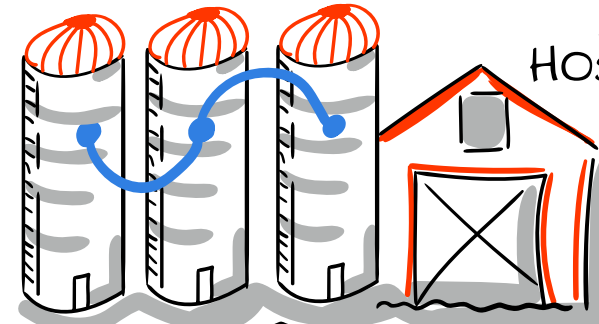
REPORT HEALTHCARE
CRIMINAL JUSTICE SYSTEM
ECONOMIC DEVELOPMENT
QUALITY OF LIFE

existing minority leadership were the first voices and well welcomed in 2020

7500 PEOPLE INCLUDING LEADERSHIP ATTEND RACIAL EQUITY TRAINING

NOW THEY HAVE THE VOCABULARY TO TALK ABOUT IT

COMMUNITY HEALTH ASSESSMENTS UNCOORDINATED ACROSS HOSPITALS



WE NEEDED TO WORK ON ASSESSMENTS AND MORE TOGETHER

WORDS OF WISDOM START SOMEWHERE!

now we do!

GOVERNOR'S COUNCIL - A CULMINATION OF COLLABORATIVE EFFORTS TO CENTER THIS WORK TO THOSE ON THE MARGINS.

GOVERNMENT ALLIANCE FOR RACE AND EQUITY



EDUCATION AND TRAINING

COUNTY + MUNICIPALITY FOLLOWED SUIT

COMMUNITY SURVEY BEGAN CONDITIONING OF FINDING OUTCOMES

2018 DECLARATION OF RACISM AS A CRISIS.

WISCONSIN PUBLIC HEALTH ASSOCIATION

A MAJORITY MINORITY CITY

MILWAUKEE 2nd in nation in segregation

RIOT SPARKED THE JOURNEY IN 2016

MARGINALIZED COMMUNITIES BEING LEFT BEHIND.

WORDS OF WISDOM COALITION BUILDING

GO TO DEFINITION ON RACISM? See Dr. Camara Jones!

BUT YOU NEED EXAMPLES

REDLINING of 1930's has clear impacts today

- AN ACTIONABLE PLAN
- ✓ DIGNITY AND RESPECT
 - ✓ EXAMINING OWN BIASES
 - ✓ REVIEWING POLICIES
 - ✓ LEADING CHANGE BY ADDRESSING DISPARITIES

MLK words still win the day



HOW APPROACH CONVERSATIONS WITH COMMUNITY

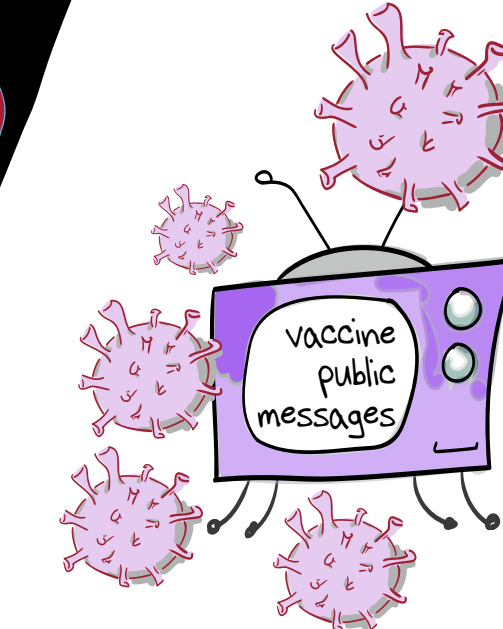
WITH HUMILITY COMING TO STAFF AND COMMUNITIES TO ASK HOW TO HELP.

Well Let's HAVE Community Discussions!!!

among black latinx Hmong

WE NEED TRUST AND TRUSTWORTHY VOICES

barbers work!



RACISM IS A PUBLIC HEALTH CRISIS!!!

PARTNERING WITH LONG TERM ORGANIZATIONS ALREADY DOING THE WORK

GIVING PARTNERS DECISION MAKING ABILITY WITHIN HEALTH ORGANIZATIONS

Now WHAT?

FUNDS to people with real experience doing real work

funds for minority businesses - were critical during COVID

