



Tiles • Marble • Quartz • Bathware

Asian Granito India Ltd.

Regd. & Corp. Office

202, Dev Arc, Opp. Iskcon Temple, S.G. Highway,
Ahmedabad - 380 015, Gujarat, INDIA.

Phone: +91 79 66125500/698 | Fax: +91 79 66125600/66058672
CIN: L17110GJ1995PLC027025

E-mail: info@aglasiangranito.com | Web: www.aglasiangranito.com

Follow Us: 1800 123 3455
Toll-free: Mon-Sat 10am-6pm



Scan code to
Download
AGL Tiles App



Scan code to
Download
Catalogue



Scan to Find
Exclusive
Store



Scan code for
360° Tour

MAY 2024



Tiles • Marble • Quartz • Bathware

Premium *ka* Pappa



Porcelain Meets
Unrivalled *Grandeur*



ALL-IN-ONE
LUXURY
WALL & FLOOR

natural
Wooden Planks

V4

TUFFGUARD & PORCELAIN TILES

600x1200mm | 600x600mm | 195x1000mm | 397x397mm | 300x300mm

AGL Premium ka Pappa

V4

TUFFGUARD AND PORCELAIN TILES

ABOUT US

At AGL, we have been leading the change by continuous innovation, setting higher goals, achieving the unthinkable and creating new benchmarks. This has enabled us to clock net consolidated turnover of ₹1562 Crores (US \$190 Million) in FY22-23, making us giant in the space décor industry. In the short span of 23 years, we are one of India's largest groups, with a global footprint across 100 countries. Today,

AGL has enhance its product range from Tile to Marble, Quartz and now in Bathware as well.

The research and development center at every AGL plant is well equipped with all the latest testing methods and the products are thoroughly tested for quality before delivery. It is ensured that every product matches the highest international quality standards.



ADVANCE TECHNOLOGIES & KEY PROCESS



14 ULTRA-MODERN MANUFACTURING UNITS IN INDIA*

* Including JVs and CMUs
** Includes contract labour



From ceramic tiles to latest Glazed Vitrified Tiles & Double Charge Vitrified Tiles; Roto Drum to New Digital Technology, AGL dominates the most diverse array of designs across the entire Tile, Marble & Quartz product range. Modernization plays a pivotal role for the company, which becomes evident from our 09 ultra modern plants across Gujarat. Spread over an area of 3,20,000 sqm these plants unfailingly produce unbeatable classy products every day. Therefore, we are proud to acquire the certifications from ISO and Green Building.

Asian Granito India Limited has debunked the myth that leadership in design is a forte only of foreign players by achieving the position through an ideal mix of creativity and technology. It has been the champion in introducing innovative digital printing technology with a technical collaboration with SACMI, Italy. A world-class Quality Management System has enabled us to build a portfolio that is truly avant-garde.

A : Latest Press with ultra modern feeder
B : Digital Printing Technology -14 Unit
C : World's Widest Kiln First in India
D : Auto check of planarity & rectangularity of tiles
E : Continua + latest press system from Sacmi, italy

| | | | | |
|---|--|--|--|------------------------------|
| 54.5 Million sqm Production Capacity per Annum* | Consolidated Net turnover ₹1562 cr. (US \$190 million) | 1400+ Designs | 30+ Different sizes | 12 Display centres |
| 6000+ Employees Includes contract labour | 14 Manufacturing Units** | Exports in 100+ Countries | Trade network in 35 States & UTs of India | 235+ Showrooms |
| 11+ Digital Printing Technology | First to bring world's largest 5 line Kiln setup in India. | 1.4 Million+ Facebook followers | 1400+ Touch point | |

GLOBAL
PRESENCE IN
OVER 100+
COUNTRIES

YOUNGEST &
FASTEST GROWING
TILE COMPANY
IN INDIA

LARGEST
SINGLE
LOCATION
PLANT IN INDIA

ONE OF TOP 4
LISTED CERAMIC
TILES COMPANIES
IN INDIA

AWARDS AND RECOGNITION

Achievements of trusted and innovative brand in the ceramic industry

Today, AGL has been performed the best to give excellent product and services across the globe and in result, AGL has been recognized by top media houses like Readers' Digest, The Economic Times and Fortune India. AGL is certified with ISO 9001:2015 and ISO 14001:2015 for its quality management and environmental management system and also products are certified with CE standards.



AGL is now MEGA BRAND Recognition by ARCHITECTURE + DESIGN - 2016



ET INDUSTRY LEADERS 2021



Recognised as one of the Best Brand by The Economic Times -2022



Recognised as one of the Best Brand by The Economic Times -2023

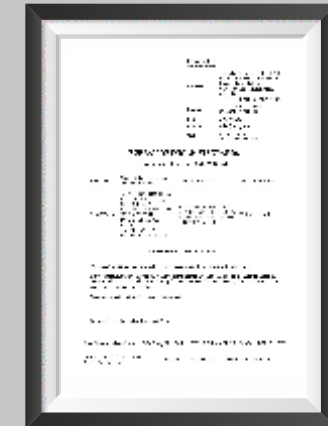
CERTIFICATIONS



ISO 9001 : 2015



ISO 9001 : 2015



BIS CERTIFIED



CE CERTIFIED



CERTIFIED TWO STAR EXPORT HOUSE



GRIHA CERTIFIED



IIID CERTIFIED



AWARDED FOR BRAND LEADERSHIP



IGBC CERTIFIED

MANY NATIONAL & INTERNATIONAL PROJECTS

Today AGL is the preferred brand for several National & International Projects. We are partnering several private residential projects, commercial projects, showrooms, port authorities, religious centers, and international projects. Here are selected few of them:



Project : Cleveland Cycle Werks Showroom

PRESTIGIOUS PROJECTS

| | | | | |
|---------------------|-------------|------------|---------|-------------------|
| Government Projects | | | | |
| | | | | |
| | | | | |
| Banks | | Corporates | | |
| | | | | |
| ADNOC | | Builders | | |
| | | | | |
| | | | | |
| Hospital | Automobiles | | Telecom | |
| | | | | |
| | | | | |
| Multiplexes | Hotels | | Apparel | |
| | | | | |
| Eatery Brands | | | | |
| | | | | and many more ... |

GLOBAL PRESENCE



GLOBAL FOOTPRINT 100 COUNTRIES

Asian Granito India Ltd. (AGL) exports spread across an ever growing network of more than 100 countries.

OUR EXPERIENCE CENTRES

"Team AGL is making efforts to simplify product selections very nearer to you. Keeping in mind better service and easy access to AGL products, your company has opened world class display centres across various metro cities of India. These showrooms are avant-garde with contemporary product applications of Tiles, Marble, Quartz and its latest Bathware range of products. We are sure that your visit to AGL showroom definitely helps you in right product selection and leave long lasting impressions in your mind. Below are few glimpse over the showroom.

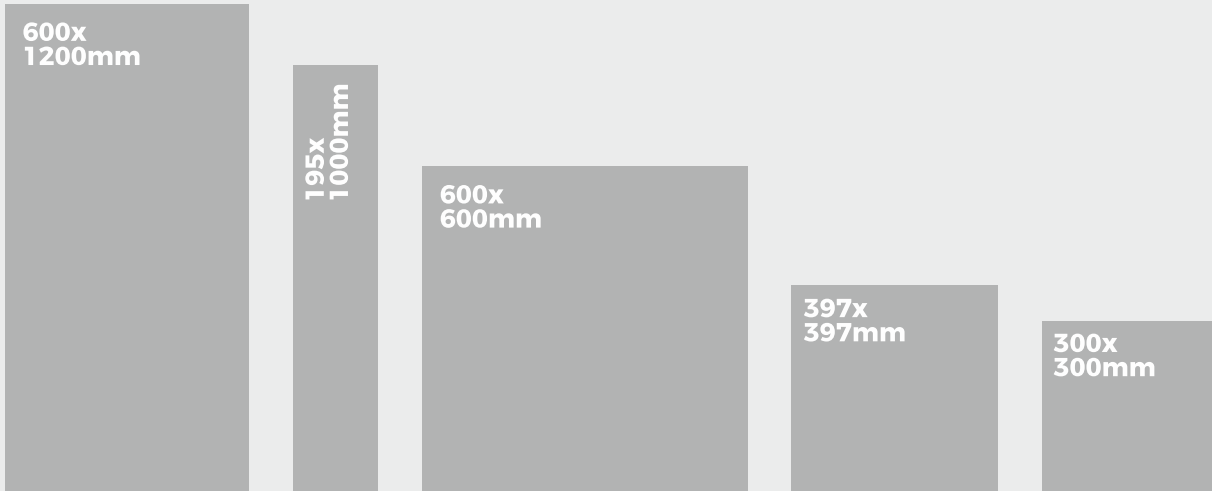


AHMEDABAD | MORBI | HIMATNAGAR | MUMBAI | BANGALURU
 COCHIN | HYDERABAD | JAIPUR | DELHI | KOLKATA

**TOUGH AND RESILIENT WITH
 TIMELESS AESTHETIC ELEGANCE**



AGL Tuffguard and Porcelain collection are the blend of creativity, trend, luxurious touch and feel, add on with safety features. It is decorated with natural textures and values to maintain very easily in daily life. It has vast applications like bathroom, living room, balcony, bedroom and lot more, wherever you want to transform space.



Available in modern formats like 600x1200mm, 600x600mm, 397x397mm, 195x1000mm and 300x300mm. They are manufactured using most advance technology and developed by highly experienced research team to elevate your space aesthetics to higher class. It has bunch of features like stain and skid resistant, high abrasion resistant and much more to stay impressive life long.

TILE FEATURES

- HIGH DURABILITY
- HYGIENIC SURFACES
- LOW WATER ABSORPTION
- NANO POLISHED
- FLOOR TILES
- FIRE RESISTANCE
- EASY TO CLEAN
- FROST RESISTANCE
- STAIN RESISTANCE
- EASY TO INSTALL
- SCRATCH RESISTANCE
- ECO FRIENDLY

Introducing New Sizes Soon

| | | | |
|---|--|--|--|
| 600x 600mm 12MM Thickness | 1200x 1600mm 9MM Thickness | 800x 2600mm 15MM Thickness | 1200x 2800mm 6MM Thickness |
|---|--|--|--|



MTA- Make to Available
This product is immediately available to order.



MTO- Make to Order
This product is made on order only.



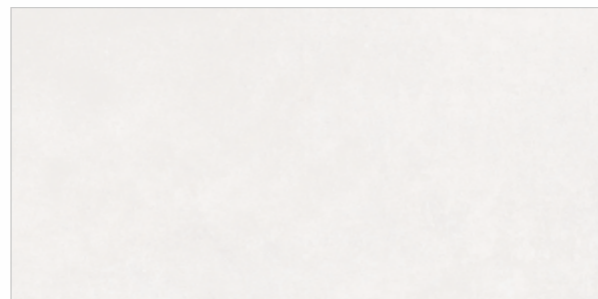
Matt



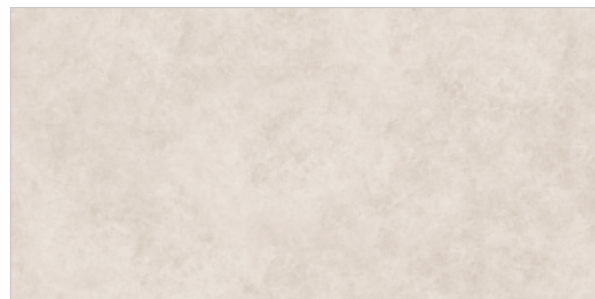
Wall



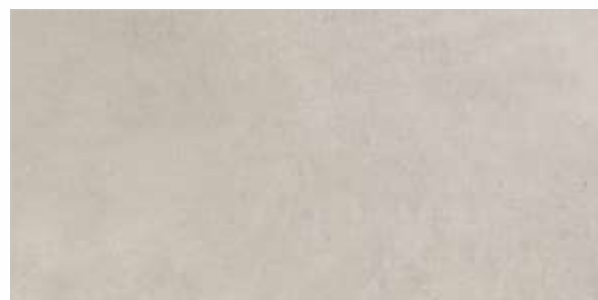
Floor



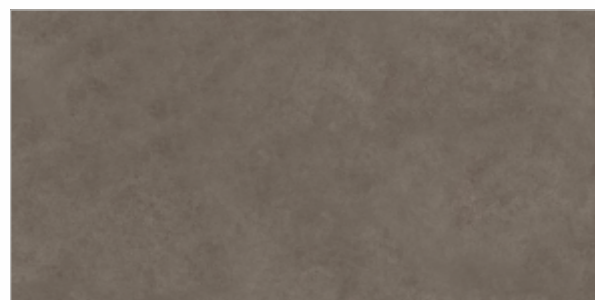
FAME BIANCO



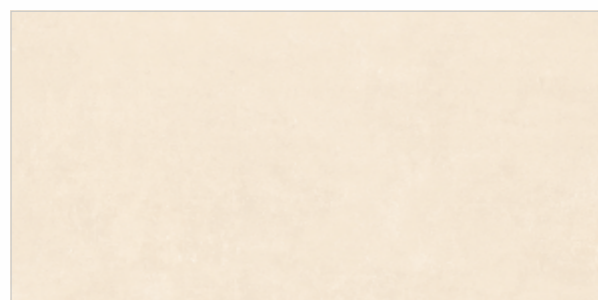
JOYTONE BEIGE



FAME BEIGE



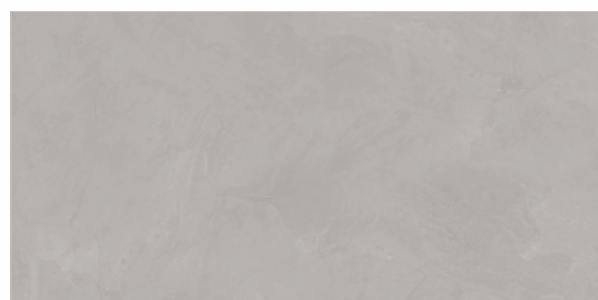
JOYTONE MOCHA



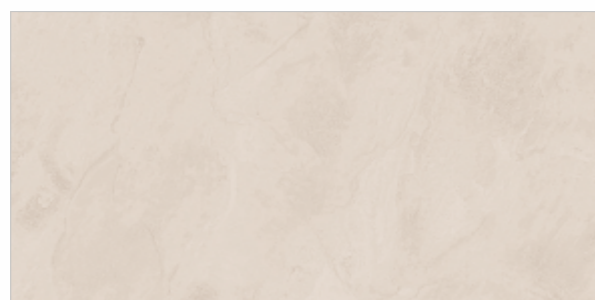
FAME MARFIL



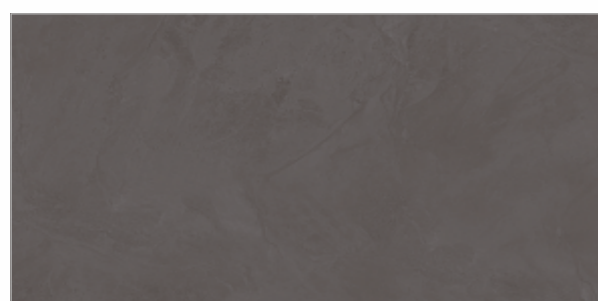
JOYTONE AZUL



ZITTO GRIS



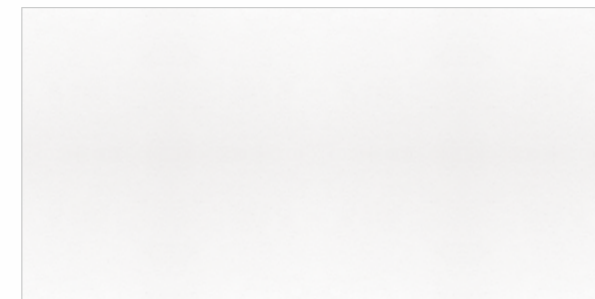
ZITTO BEIGE



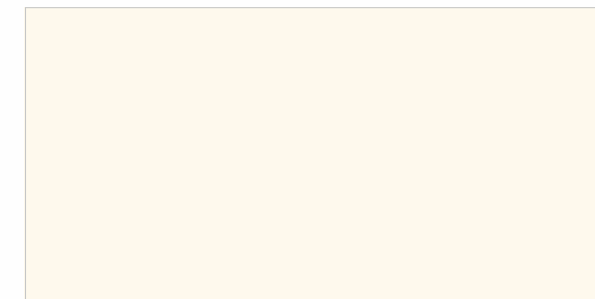
ZITTO DARK



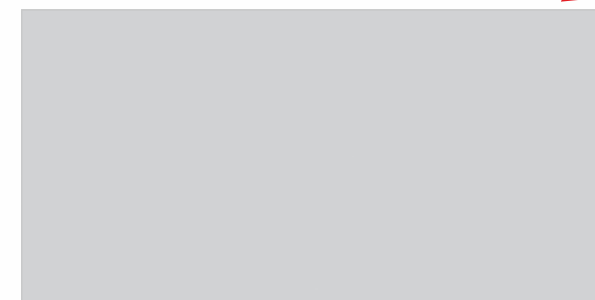
ZITTO RUBY



SWITZ WHITE



SWITZ IVORY



GRIS



CEMENTO



BLUE



KOTA GREEN







MTA- Make to Available
This product is immediately available to order.



MTO- Make to Order
This product is made on order only.



Matt



Wall



Floor



TITLIS SATVARIO



OPTIMA NERO



OPTIMA CREMA



OPTIMA CHOCO



PARISIA PINE WOOD



PARISIA BRIGHT WOOD



PARISIA WENGE WOOD







MTA- Make to Available
This product is immediately available to order.



MTO- Make to Order
This product is made on order only.



Matt



Wall



Floor



INSIGNIA GRIS



INSIGNIA BROWN



INSIGNIA ARTE DECOR



INSIGNIA STYLE DECOR



INSIGNIA FLORA DECOR



INSIGNIA PETAL DECOR







MTA- Make to Available
This product is immediately available to order.



MTO- Make to Order
This product is made on order only.



Matt



Wall



Floor



ARCHIDI FUSION



ARCHIDI PINE



ARCHIDI TIMBER



ARCHIDI WENGE



FANTASIA GRIS



FANTASIA SKY



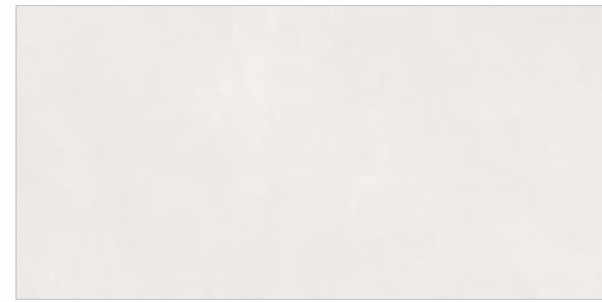
FANTASIA NERO



FANTASIA BLUE







FANTASIA WHITE



FANTASIA CREMA



FANTASIA BEIGE



FANTASIA COTTO



FANTASIA CHOCO



FANTASIA RUBY

PUNCH WITH BUFFING FINISH



VELVETTE DECOR

U N I Q U E
C H A R M



MTA- Make to Available
This product is immediately available to order. **MTO**- Make to Order
This product is made on order only.

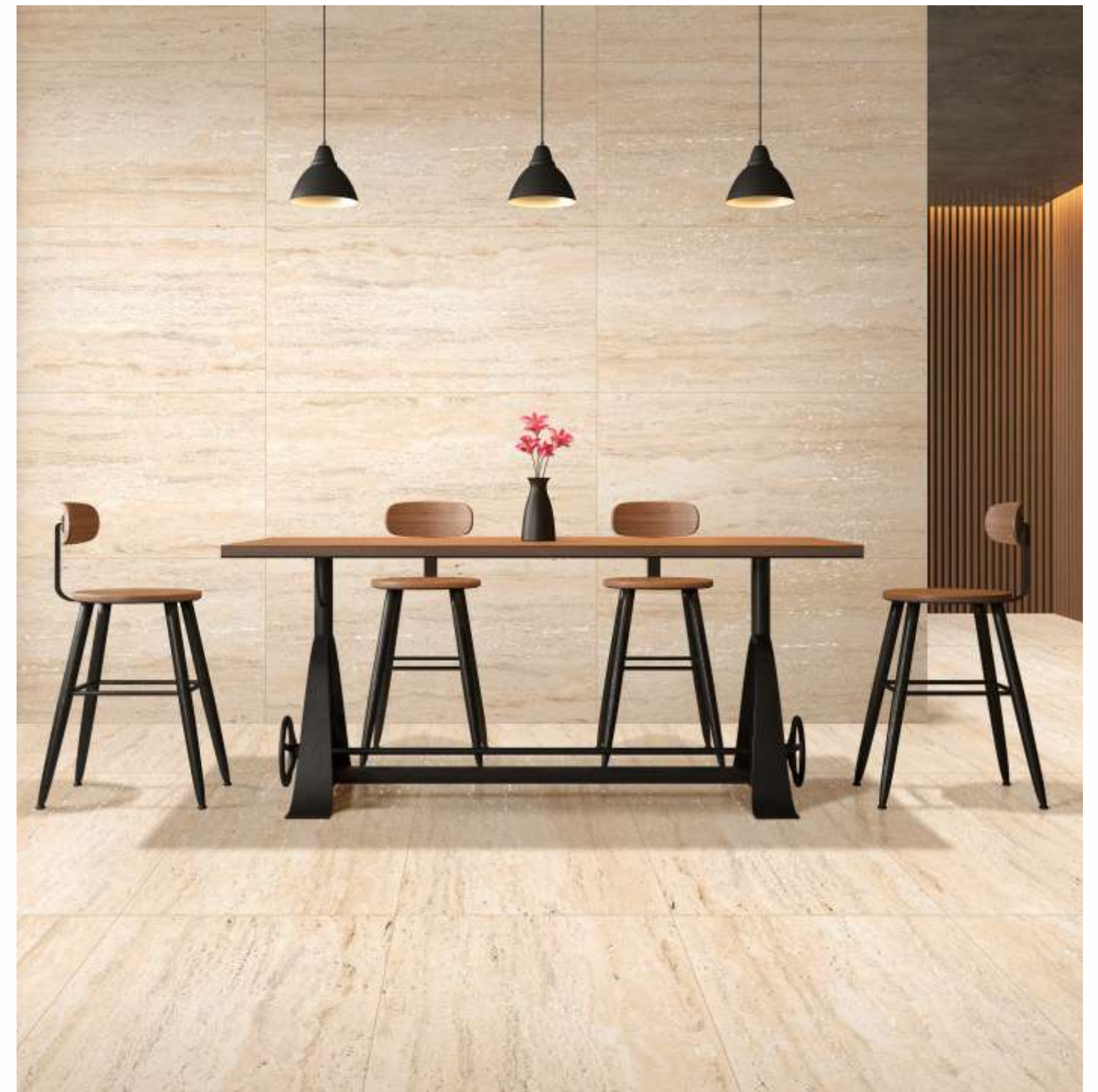
Matt Wall Floor



PLATINUM TRAVERTINO



GOLDEN TRAVERTINO







MTA- Make to Available
This product is immediately available to order.



MTO- Make to Order
This product is made on order only.



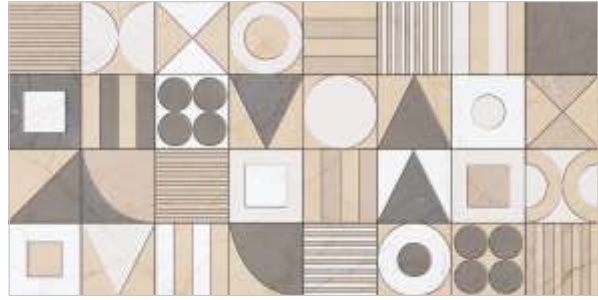
Matt



Wall



Floor



SOFTONE FUSION DECOR



SOFTONE BROWN



SOFTONE SILVER



SOFTONE MOCA



RICHIE BIANCO



RICHIE CREMA



RICHIE GREY



RICHIE BROWN







MTA- Make to Available
This product is immediately available to order.



MTO- Make to Order
This product is made on order only.



Matt



Wall



Floor



RAY CHOCO



GLEAM BEIGE



ELEGANTE MARMO



ICONIC MARBLE



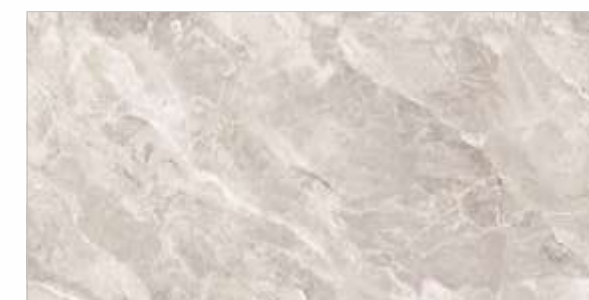
INFINIA SATVARIO



MONTE CRISTO



MYRIAD BLUE



LUXURIA LIGHT



MYRIAD OLIVE



LUXURIA BRUNO



MTA- Make to Available
This product is immediately available to order.



MTO- Make to Order
This product is made on order only.



Matt



Wall



Floor



VANISH CREMA



NOVA WOOD PINE



VANISH GREY



NOVA WOOD BROWN



VANISH NERO



NOVA WOOD GOLD







ANDESROCK CREMA



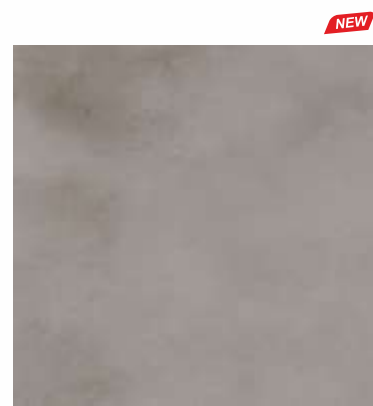
ANDESROCK BEIGE



ANDESROCK CREMA DÉCOR



ANDESROCK GRIS



ANDESROCK GRIGIO



ANDESROCK GRIS DÉCOR



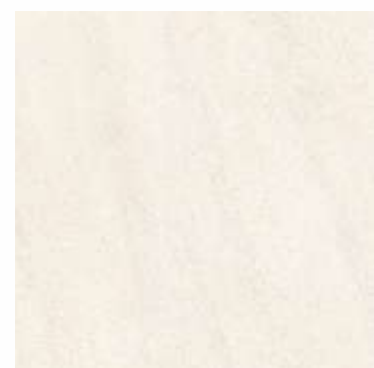
HARMONY GREY



HARMONY BLACK



HARMONY GREY DECOR



HARMONY BEIGE



HARMONY SAND



HARMONY BEIGE DECOR

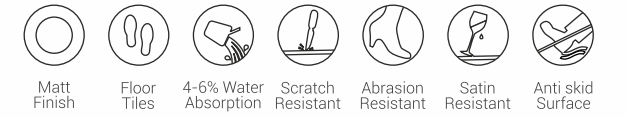




MTA- Make to Available
This product is immediately available to order.



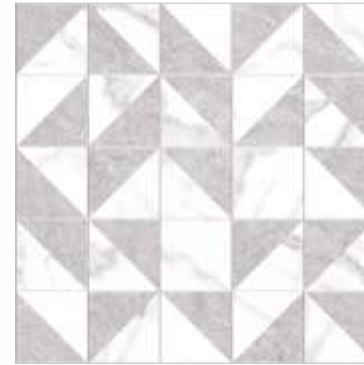
MTO- Make to Order
This product is made on order only.



CALCATTÀ NATURAL



URBAN ROYAL GRIGIO



CALCATTÀ NATURAL DECOR



STARTEK BIANCO



STARTEK NERO



STARTEK NERO DECOR



AVON GRIS



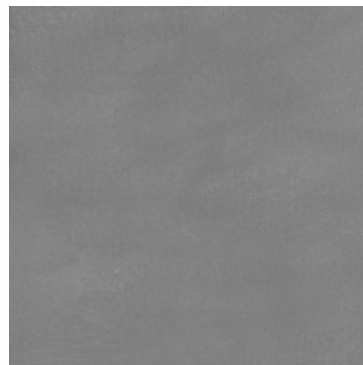
AVON GRIGIO



AVON GRIGIO DECOR



DRIFT GRIS



DRIFT GRIGIO



DRIFT GRIS DECOR

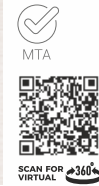
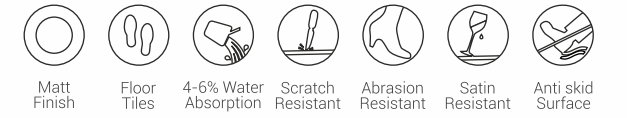




MTA- Make to Available
This product is immediately available to order.



MTO- Make to Order
This product is made on order only.



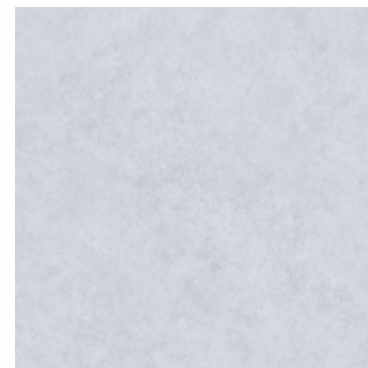
SUPERIO GRIS



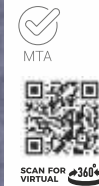
SUPERIO GRIS DECOR



SUPERIO TAN DECOR



AZULATE AQUA



AZULATE BLUE



AZULATE BLUE ART



ARTFLOR GRIS DECOR



ARTFLOR BEIGE DECOR



ATRIUM GRIS DECOR



ARTFLOR GRIS



ARTFLOR BEIGE



ATRIUM GRIS





MTA- Make to Available
This product is immediately available to order.



MTO- Make to Order
This product is made on order only.



Matt Finish



Floor Tiles



4-6% Water Absorption



Scratch Resistant



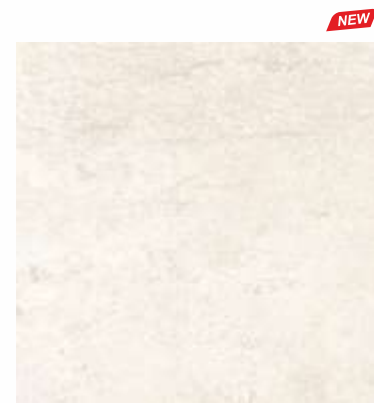
Abrasion Resistant



Satin Resistant



Anti skid Surface



COCONINO BRIGHT



COCONINO BLUE



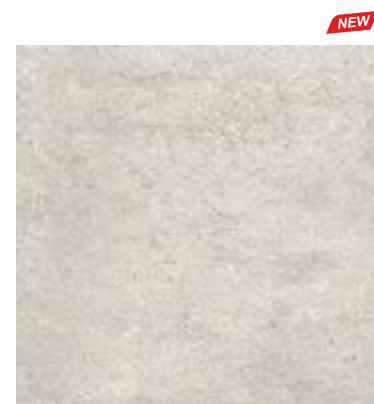
LINIOR CREMA DECOR



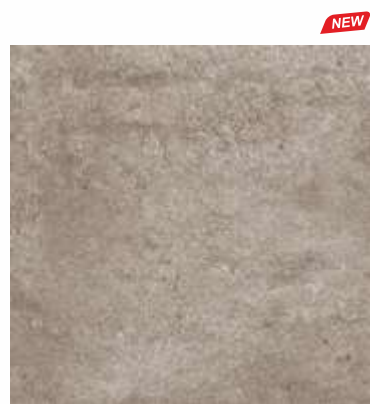
MTO



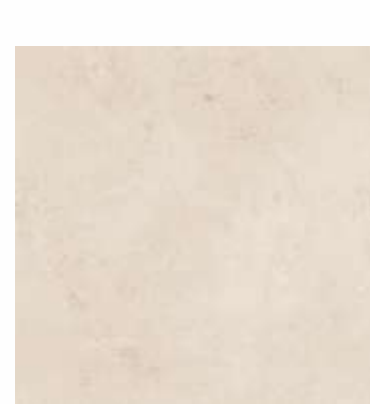
SCAN FOR VIRTUAL



COCONINO LIGHT



COCONINO MOCHA



LINIOR CREMA



MTO



SCAN FOR VIRTUAL



ALTAIE BUFF



ALTAIE CHOCO



ALTAIE GRIS



SIERRA CREMA



MTA



SCAN FOR VIRTUAL



BIG TERRAZO BIANCO



MTO



SCAN FOR VIRTUAL



BIG TERRAZO CREMA



MTO



SCAN FOR VIRTUAL

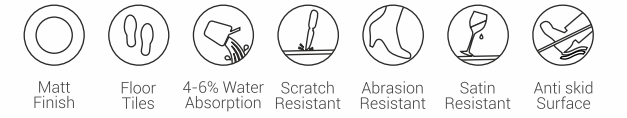




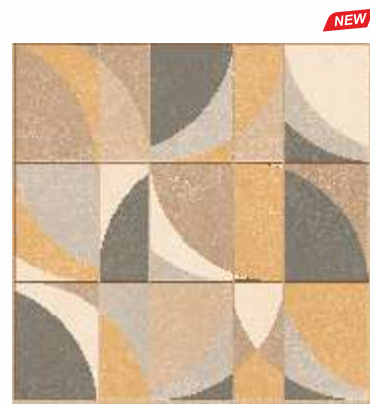
MTA- Make to Available
This product is immediately available to order.



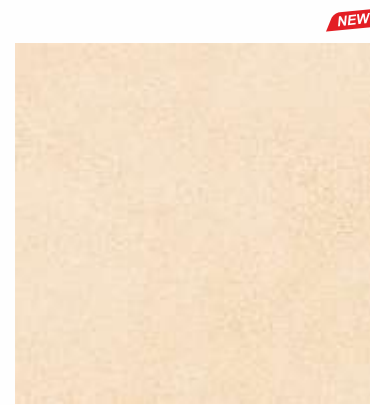
MTO- Make to Order
This product is made on order only.



IBERIAN ART DÉCOR 1



IBERIAN ART DÉCOR 2



IBERIAN CREMA



IBERIAN TAUPE



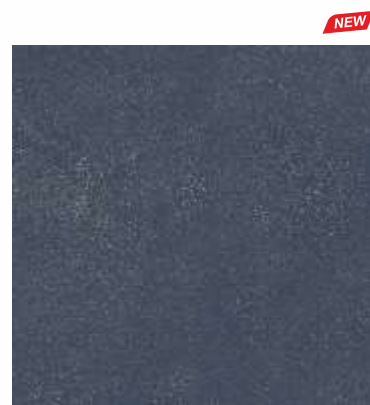
IBERIAN CHOCO



IBERIAN GREY



IBERIAN SUNNY



IBERIAN AZULE



IBERIAN AZULE DÉCOR



VIBES BEIGE



VIBES BROWN



IBERIAN BIANCO DÉCOR

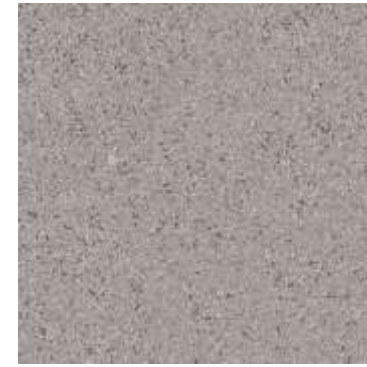




ZESTA BIANCO



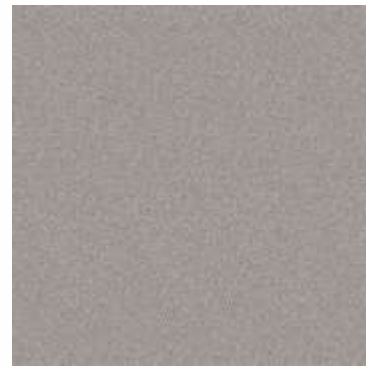
ZESTA NERO



ZESTA GRIGIO



TRAPO LIGHT



TRAPO DARK



ITALIO BEIGE



AZULATO CREMA



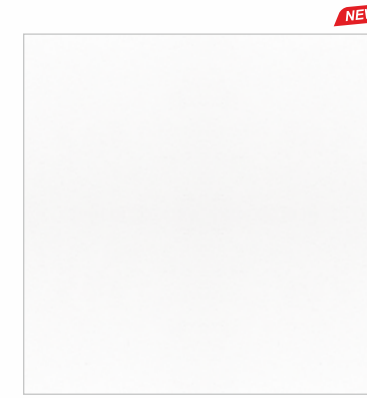
ANGEL LIGHT



ANGEL DARK



SOFIA MARBLE



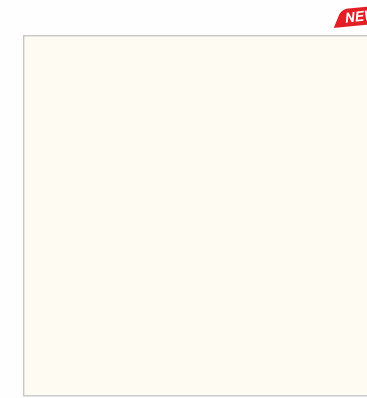
SWITZ WHITE



GRIS



CEMENTO



SWITZ IVORY



BLUE



KOTA GREEN





MTA- Make to Available
This product is immediately available to order.



MTO- Make to Order
This product is made on order only.



Matt Finish



Floor Tiles



4-6% Water Absorption



Scratch Resistant



Abrasion Resistant



Satin Resistant



Anti skid Surface



MTA



SCAN FOR VIRTUAL

PREMIO CREMA



MTA



SCAN FOR VIRTUAL

PREMIO GRIS



MTA



SCAN FOR VIRTUAL

PREMIO GRIGIO



MTA



SCAN FOR VIRTUAL

PREMIO CHOCO



MTA



SCAN FOR VIRTUAL

PREMIO MAPLE



MTA



SCAN FOR VIRTUAL

PREMIO COTTO



MTA



SCAN FOR VIRTUAL

PREMIO SLATE

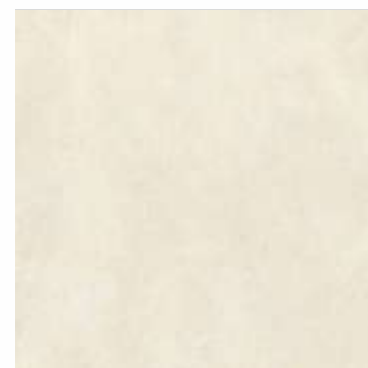


MTO



SCAN FOR VIRTUAL

PREMIO VERDE



MTA



SCAN FOR VIRTUAL

SANDSTONE BEIGE



MTO



SCAN FOR VIRTUAL

SANDSTONE GREY





MTA- Make to Available
This product is immediately available to order.



MTO- Make to Order
This product is made on order only.



Matt Finish



Floor Tiles



4-6% Water Absorption



Scratch Resistant



Abrasion Resistant



Satin Resistant



Anti skid Surface



MTA



SCAN FOR VIRTUAL #360

UNICO AQUA



MTA



SCAN FOR VIRTUAL #360

UNICO AZUL



MTA



SCAN FOR VIRTUAL #360

UNICO CREMA



MTA



SCAN FOR VIRTUAL #360

UNICO BEIGE



MTA



SCAN FOR VIRTUAL #360

UNICO CHOCO



MTO



SCAN FOR VIRTUAL #360

UNICO NERO



MTA



SCAN FOR VIRTUAL #360

UNICO BROWN



MTO



SCAN FOR VIRTUAL #360

GILT SAND







MTA- Make to Available
This product is immediately available to order.



MTO- Make to Order
This product is made on order only.



Matt Finish



Floor Tiles



4-6% Water Absorption



Scratch Resistant



Abrasion Resistant



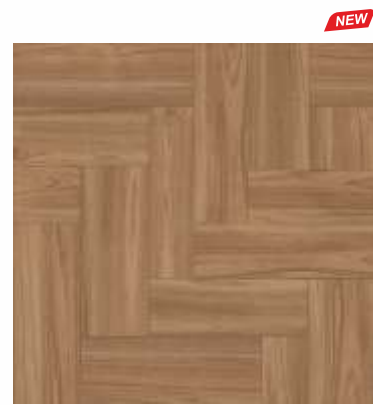
Satin Resistant



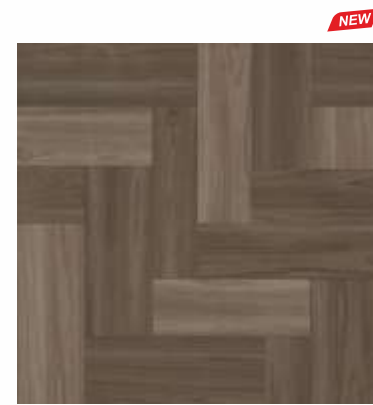
Anti skid Surface



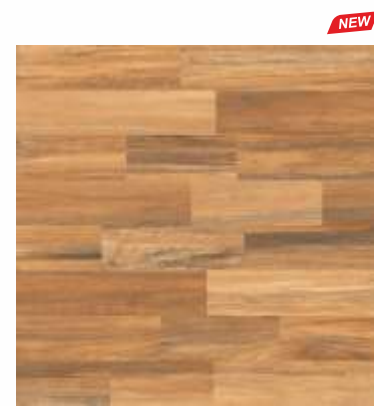
APULIA ALMOND



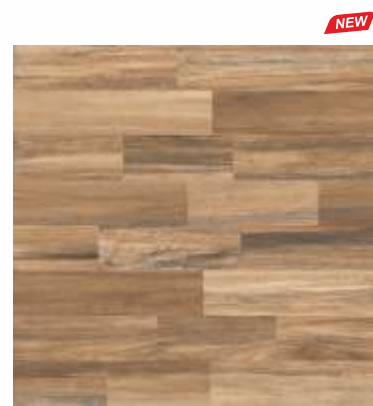
APULIA WENGE



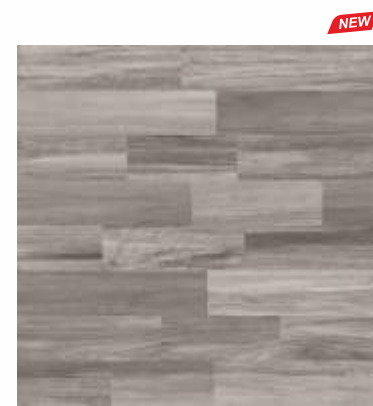
APULIA NERO



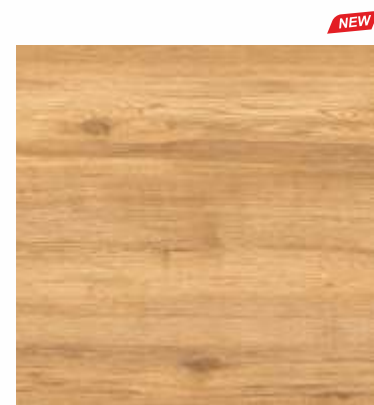
VEDIC BROWN



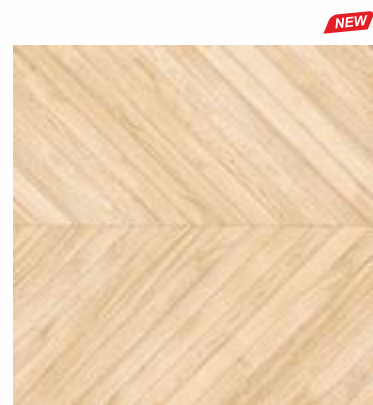
VEDIC ALMOND



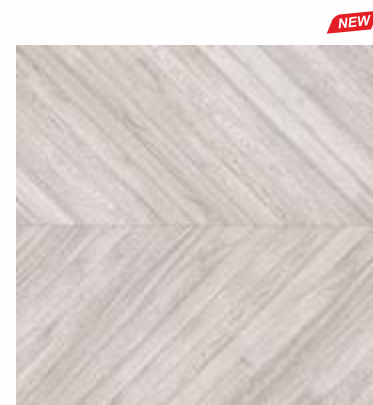
VEDIC GRIS



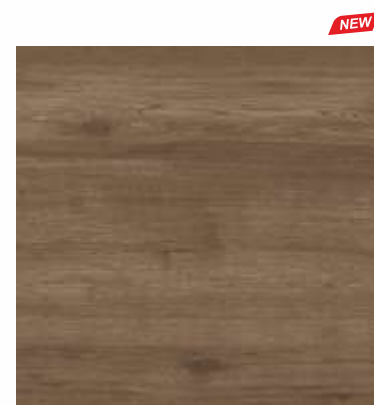
ALEGRE WALNUT



SAPELE CREMA



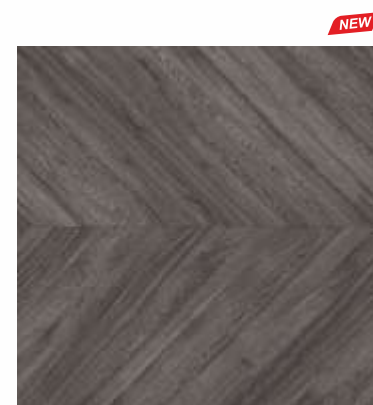
SAPELE SILVER



ALEGRE CHOCO



SAPELE RUST



SAPELE NERO

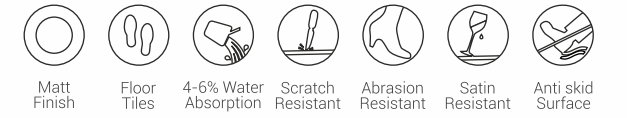




MTA- Make to Available
This product is immediately available to order.



MTO- Make to Order
This product is made on order only.



NEOSTICK BEIGE



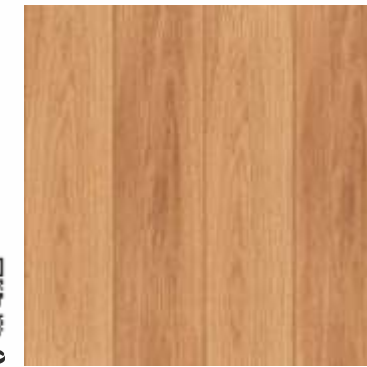
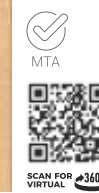
CHISEL WOOD



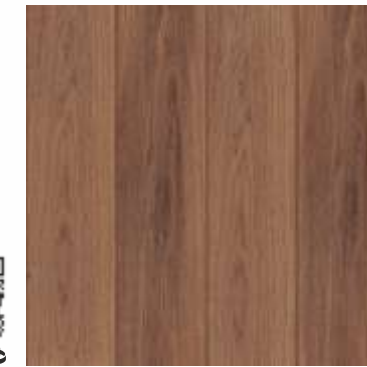
KENWOOD MAPLE



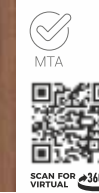
GREENHEART ALMOND



GREENHEART BROWN



GREENHEART WENGE



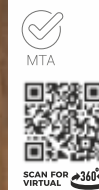
NEOSTICK BEIGE DECOR



CHISEL WOOD DECOR



KENWOOD BROWN



ZIGZIG PINE



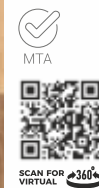
FORESTA CHOCO



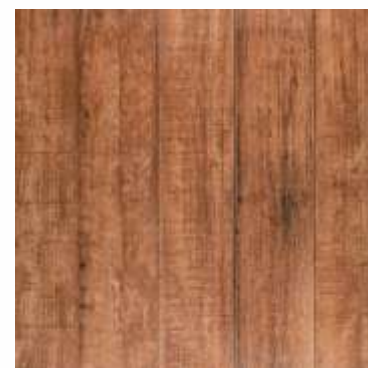
CHEVRON APPLE



CHEVRON OAK



BOSCHI BROWN



COCOA WENGE



PRESTIGE OAK





MTA- Make to Available
This product is immediately available to order.



MTO- Make to Order
This product is made on order only.



Matt Finish



Floor Tiles



4-6% Water Absorption



Scratch Resistant



Abrasion Resistant



Satin Resistant



Anti skid Surface



MUSIC WOOD



KETHRON WOOD



LAMINATO DECOR



MONTE MAPLE



MONTE BEIGE



ALMONDI WOOD



DREAM WOOD



ALASKA WOOD



RHYTHM 11



STRIP WOOD



MAHAGONY WOOD



WINDSOR BROWN DECOR



MATRIX WOOD



PARETE WOOD



WOOD FUSION





HARLEY CLOUDY



HARLEY GRIGIO



HARLEY BEIGE



STONZA BRIGHT



STONZA SUNNY



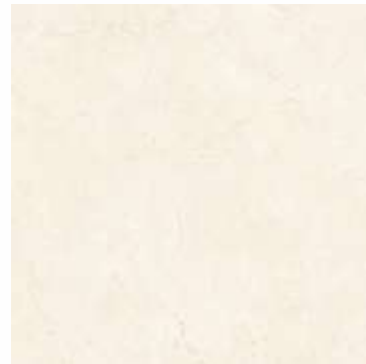
ANTONE WOOD BROWN



ESPERIO BIANCO



ESPERIO BEIGE



ACCURA CREMA



ESPERIO GRIGIO

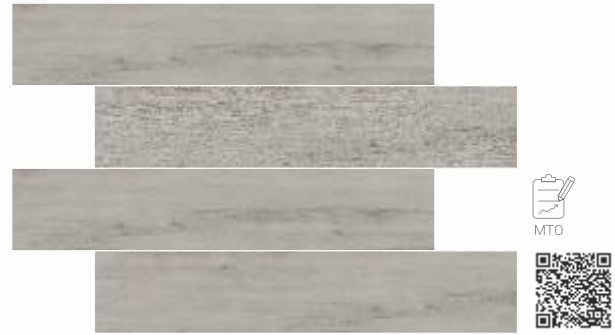


ESPERIO BROWN



ACCURA BEIGE





PIANTE JACKPINE GRIS



PIANTE CLOVE



PIANTE CHOCO



PIANTE RICHWOOD



PIANTE HONEY



PIANTE TEAK





PIANTE NATURAL



PIANTE WENGE



 **MTA**- Make to Available
This product is immediately available to order.  **MTO**- Make to Order
This product is made on order only.

 Matt Finish
 Floor Tiles
 Satin Resistant
 Anti skid Surface



PIANTE APE WOOD



PIANTE ALMOND

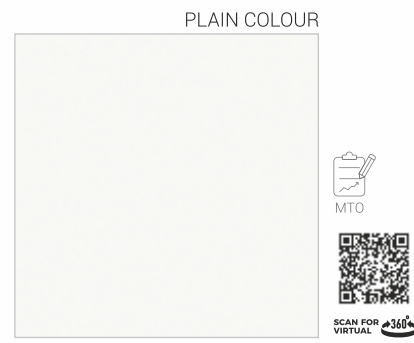


PIANTE TRAVENTINO GRIS

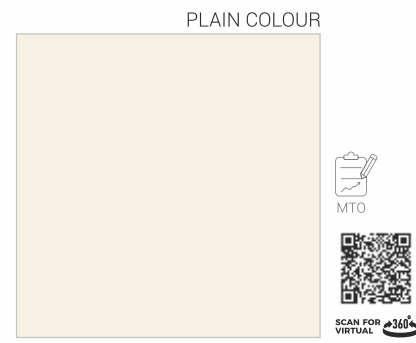


PIANTE TRAVENTINO BEIGE





5031



5063



5051



5055



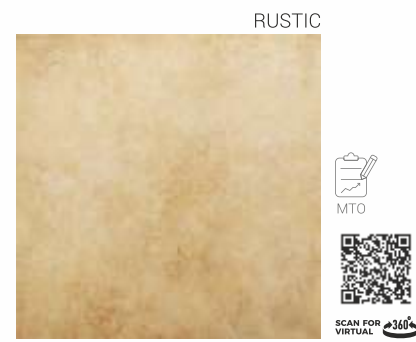
5063



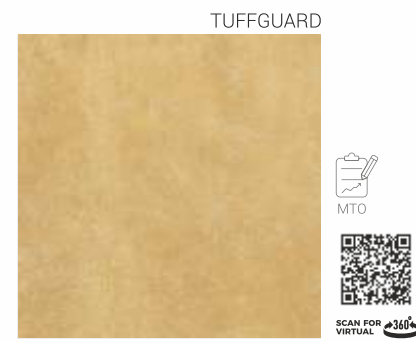
5054



TITAN CARAMEL



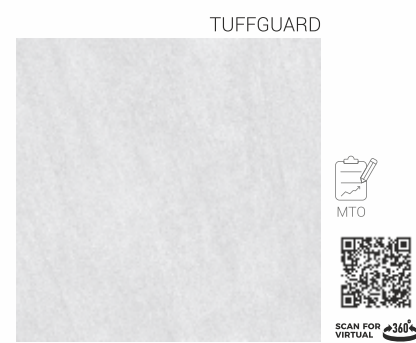
DOLCE BEIGE



SANDSTONE GOLD



HARMONY BEIGE



HARMONY GREY



STEEL GREY



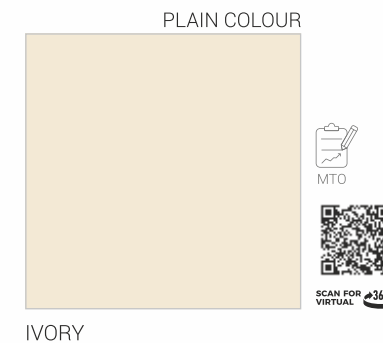
STEEL BROWN



5029



NUVO BEIGE



IVORY



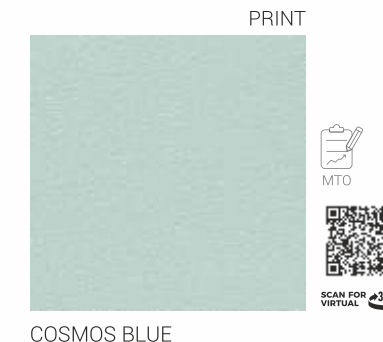
COSMOS WHITE



COSMOS IVORY



COSMOS GREY



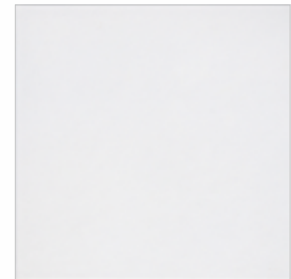
COSMOS BLUE



COSMOS DARK BLUE

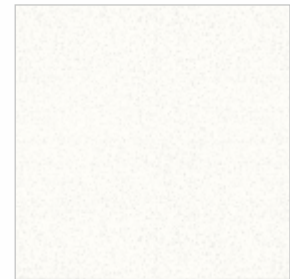


PLAIN COLOUR



WHITE

PRINT



TERRAZO GREY

PRINT



TERRAZO BEIGE

PRINT



PROVENZA BEIGE

PRINT



PROVENZA GREY

PRINT



MISTY BROWN

PRINT



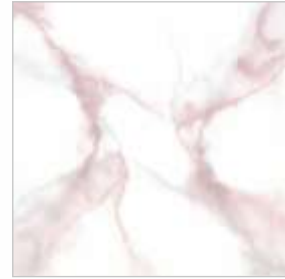
IMPERIAL BLUE

PRINT



IMPERIAL GREY

PRINT



IMPERIAL PINK



Technical Specification



600x1200mm HI-TECH TUFF GUARD DIGITAL TILES

| CHARACTERISTICS | Requirement as per ISO 13006:2018 0.5% < E ≤ 3.0 Group Bib | Requirement as per IS 15622:2017 0.08% < E ≤ 3.0 Group Bib | MEAN VALUE OF AGL | METHOD OF TESTING |
|--|--|--|--|----------------------------|
| Regulatory Properties | | | | |
| Deviation In Length & Width | ± 0.3% | ± 0.1% | ± 0.1% | ISO 10545-2 IS13630 -1 |
| Deviation In Thickness | ± 5.0% | ± 5% | ± 4.0% | |
| Straightness of Edge | ± 0.3% | ± 0.1% | ± 0.1% | |
| Rectangularity | ± 0.3% | ± 0.1% | ± 0.1% | |
| Surface Flatness | ± 0.4% | ± 0.5% | ± 0.2% | |
| Surface Quality | Minimum of 95% of the tiles are to be free from visible defects which can impair the appearance of a major area of tiles | Minimum of 95% of the tiles shall be free from visible defects that would impair the appearance of a major area of tiles | Minimum of 95% of the tiles shall be free from visible defects that would impair the appearance of a major area of tiles | |
| Physical & Thermal Properties | | | | |
| Water Absorption % by Wt. | 0.5% < E ≤ 3.0%, Individual Max 3.3% | Average 0.08% < E ≤ 3.0%, Individual 3.3% Max | < 3.0% | ISO 10545-3 IS13630-2 |
| MOR in N/mm ² | Min 30, Individual Min. 27 | Average 30, Ind Min. 27 | Avg 32 | ISO 10545-4 IS13630-6 |
| Breaking Strength in N | 1100 Min for thickness ≥ 7.5mm | 1100 Min for thickness ≥ 7.5mm | > 1300 | ISO 10545-4 IS13630-6 |
| Bulk Density (gm/cc) | 2.0 Min | 2.0 Min | 2.2 | ISO 10545-3 IS13630-2 |
| Resistance to Surface abrasion | Report abrasion class and cycles passed | Class II, Min | Class III, Min | ISO 10545-7 IS13630-11 |
| Mohs Scratch Hardness | N/A | Min, 5 | Min, 5 | ISO 10545-7 IS13630-13 |
| Co-efficient of Linear thermal expansion from ambient temp to 1000 C (K-1) | Test method available | 7x10 ⁻⁶ Max | Max 6x10 ⁻⁶ | ISO 10545-8 IS13630-4 |
| Thermal Shock Resistance | Test method available | 10 Cycle Min | 10 Cycle Min | ISO 10545-9 IS13630-5 |
| Moisture Expansion in mm/M | Test method available | 0.02 Max | NIL | ISO 10545-10 IS13630-3 |
| Crazing Resistance | Required | 4 Cycles at 7.5 Bar, Min | 6 Cycle | ISO 10545-11 IS13630-9 |
| Impact Resistance | Test method available | 0.55, Min | > 0.55 | ISO 10545-5 IS13630-14 |
| Frost Resistance | Required | Required, if agreed to between manufacturer and purchaser | Frost Proof | ISO 10545-12 IS13630-10 |
| Chemical Properties | | | | |
| Resistance to Staining of Glazed Tiles | Min. Class 3 | Class 1, Min. | Class 1 | ISO 10545-14 IS13630-8 |
| Resistance to Household and Swimming Pool Chemicals | Minimum B | Min. Class AA | Class AA | ISO 10545-13 IS13630-8 |
| Resistance to Acid & Alkalis (Except HF Acid) | Manufacturer is to State Classification | Class AA | Class AA | ISO 10545-13 IS13630-8 |

Packing Specification

| Size (mm) | Thickness (mm) | Weight (Kg.) | No. of Tiles / Box | Area Sq. mtr./ Box |
|------------|----------------|--------------|--------------------|--------------------|
| 600x1200mm | 8.5 mm | 27.0 kg. | 2 pcs. | 1.44m ² |

Technical Specification



FASTTRACK
series

EXPERIENCE
HIGH ABRASION
RESISTANT TILES



natural
Wooden Planks

| CHARACTERISTICS | Requirement as per ISO 13006:2018 Gr B11a 3.0 ≤ E ≤ 6.0% | Requirement as per IS 15622:2017 Gr B11a 3.0 ≤ E ≤ 6.0% | AGL Value | Test Method |
|-----------------|---|--|-----------|-------------|
|-----------------|---|--|-----------|-------------|

(A) DIMENSION & SURFACE QUALITY

| | | | | |
|-----------------------------|--|--|--|-------------------------------------|
| Deviation In Length & Width | ± 0.3%, ± 1.0 mm | ± 0.1% | ± 0.1% | ISO 10545 Part-2 IS 13630 Part-1 |
| Deviation In Thickness | ± 5.0%, ± 0.5 mm | ± 5.0% | ± 3.0% | ISO 10545 Part-2 IS 13630 Part-1 |
| Straightness of Edge | ± 0.3%, ± 0.8 mm | ± 0.1% | ± 0.1% | ISO 10545 Part-2 IS 13630 Part-1 |
| Rectangularity | ± 0.3%, ± 1.5 mm | ± 0.1% | ± 0.1% | ISO 10545 Part-2 IS 13630 Part-1 |
| Surface Flatness | ± 0.4%, ± 1.8 mm | ± 0.5% | ± 0.2% | ISO 10545 Part-2 IS 13630 Part-1 |
| Surface Quality | Min. 95% of Tiles shall be free from visible defects that would impair the appearance of a major area of the tiles | Min. 95% of Tiles shall be free from visible defects that would impair the appearance of a major area of the tiles | Min. 95% of Tiles shall be free from visible defects that would impair the appearance of a major area of the tiles | ISO 10545 Part-2 IS 13630 Part-1 |

(B) PHYSICAL & THERMAL PROPERTIES

| | | | | |
|--|-------------------------------|------------------------------|---|---------------------------------------|
| Water Absorption % By Wt. | 3.0 ≤ Eb ≤ 6.0, Ind. 6.5 Max. | 3.0 ≤ Eb ≤ 6.0 Ind. 6.2 Max. | 4.0-5.5% | ISO 10545 Part-3 IS 13630 Part-2 |
| Flexural Strength (MOR) In N/mm ² | Avr. 22, Ind. Min. 20 | Avr.22, Ind. Min. 20 | ≥ 27 N/mm ² | ISO 10545 Part-4 IS 13630 Part-6 |
| Breaking Strength in N | 1000 N Min. | 1000 N Min. | > 1200 N | ISO 10545 Part-4 IS 13630 Part-6 |
| Resistance to Surface Abrasion | Manufacturer to State Class | PEI II Min. | PEI III (Glossy) PEI IV & IV* (Matt) | ISO 10545 Part-7 IS 13630 Part-11 |
| Co-efficient of Linear Thermal Expansion from ambient temp to 100°C (K ⁻¹) | 9x10 ⁻⁶ Max. | 9x10 ⁻⁶ Max. | ≤ 9X10 ⁻⁶ | ISO 10545 Part-8 IS 13630 Part-4 |
| Thermal Shock Resistance | 10 Cycles Min. | 10 Cycles Min. | No Damage after 10 Cycles | ISO 10545 Part-9 IS 13630 Part-5 |
| Moisture Expansion in mm/M | Test Method Available | 0.03 Max. | Nil | ISO 10545 Part-10 IS 13630 Part-3 |
| Craze Resistance | Required | 4 Cycles at 7.5 bar Min. | Resistance | ISO 10545 Part-11 IS 13630 Part-9 |
| Frost Resistance | Resistance | Resistance | Resistance | ISO 10545 Part-12 IS 13630 Part-10 |
| Moh'S Scratch Hardness | Min. 5 | Min. 4 | Min. 5 | EN 101 IS 13630 Part-13 |

(C) CHEMICAL PROPERTIES

| | | | | |
|--|--------------|---------------|----------|--------------------------------------|
| Resistance To Household Chemicals | No Damage | Min. Class AA | Class AA | ISO 10545 Part-13 IS 13630 Part-8 |
| Resistance To Acids & Alkalis (Except HF Acid) | No Damage | Min. Class AA | Class AA | ISO 10545 Part-13 IS 13630 Part-8 |
| Stain Resistance | Min. Class 3 | Min. Class 1 | Class 1 | ISO 10545 Part-14 IS 13630 Part-8 |

Packing Specification

| Size (mm) | Thickness (mm) | Weight (Kg.) | No. of Tiles / Box | Area Sq. mtr./ Box |
|------------|----------------|--------------|--------------------|---------------------|
| 600x600mm | 9.5 mm | 27.5 kg. | 04 pcs. | 1.44m ² |
| 195x1000mm | 9.3 mm | 19.5 kg. | 05 pcs. | 0.975m ² |

Technical Specification

Ceramic | UNRECTIFIED
FLOOR TILES



| CHARACTERISTICS | Requirement as per ISO 13006:2018 Gr B11a 3.0 ≤ E ≤ 6.0% | Requirement as per IS 15622:2017 Gr B11a 3.0 ≤ E ≤ 6.0% | AGL Value | Test Method |
|-----------------|---|--|-----------|-------------|
|-----------------|---|--|-----------|-------------|

(A) DIMENSION & SURFACE QUALITY

| | | | | |
|-----------------------------|--|--|--|-------------------------------------|
| Deviation In Length & Width | ± 0.6%, ± 2.0 mm | ± 0.4% | ± 0.4% | ISO 10545 Part-2 IS 13630 Part-1 |
| Deviation In Thickness | ± 5.0%, ± 0.5 mm | ± 5.0% | ± 3.0% | ISO 10545 Part-2 IS 13630 Part-1 |
| Straightness of Edge | ± 0.5%, ± 1.5 mm | ± 0.3% | ± 0.3% | ISO 10545 Part-2 IS 13630 Part-1 |
| Rectangularity | ± 0.5%, ± 2.0 mm | ± 0.3% | ± 0.3% | ISO 10545 Part-2 IS 13630 Part-1 |
| Surface Flatness | ± 0.5%, ± 2.0 mm | ± 0.5% | ± 0.4% | ISO 10545 Part-2 IS 13630 Part-1 |
| Surface Quality | Min. 95% of Tiles shall be free from visible defects that would impair the appearance of a major area of the tiles | Min. 95% of Tiles shall be free from visible defects that would impair the appearance of a major area of the tiles | Min. 95% of Tiles shall be free from visible defects that would impair the appearance of a major area of the tiles | ISO 10545 Part-2 IS 13630 Part-1 |

(B) PHYSICAL & THERMAL PROPERTIES

| | | | | |
|--|-------------------------------|------------------------------|---------------------------|---------------------------------------|
| Water Absorption % By Wt. | 3.0 ≤ Eb ≤ 6.0, Ind. 6.5 Max. | 3.0 ≤ Eb ≤ 6.0 Ind. 6.2 Max. | 5.0-6.0% | ISO 10545 Part-3 IS 13630 Part-2 |
| Flexural Strength (MOR) In N/mm ² | Avr. 22, Ind. Min. 20 | Avr.22, Ind. Min. 20 | ≥ 25 N/mm ² | ISO 10545 Part-4 IS 13630 Part-6 |
| Breaking Strength in N | 600 N Min. | 600 N Min. | > 800 N | ISO 10545 Part-4 IS 13630 Part-6 |
| Resistance to Surface Abrasion | Manufacturer to State Class | PEI II Min. | Min. III | ISO 10545 Part-7 IS 13630 Part-11 |
| Co-efficient of Linear Thermal Expansion from ambient temp to 100°C (K ⁻¹) | 9x10 ⁻⁶ Max. | 9x10 ⁻⁶ Max. | ≤ 9x10 ⁻⁶ | ISO 10545 Part-8 IS 13630 Part-4 |
| Thermal Shock Resistance | 10 Cycles Min. | 10 Cycles Min. | No Damage after 10 Cycles | ISO 10545 Part-9 IS 13630 Part-5 |
| Moisture Expansion in mm/M | Test Method Available | 0.03 Max. | 0.02 Max. | ISO 10545 Part-10 IS 13630 Part-3 |
| Craze Resistance | Required | 4 Cycles at 7.5 bar Min. | Resistance | ISO 10545 Part-11 IS 13630 Part-9 |
| Frost Resistance | Resistance | Resistance | Resistance | ISO 10545 Part-12 IS 13630 Part-10 |
| Moh'S Scratch Hardness | Min. 5 | Min. 4 | Min. 4 | EN 101 IS 13630 Part-13 |

(C) CHEMICAL PROPERTIES

| | | | | |
|--|--------------|---------------|----------|--------------------------------------|
| Resistance To Household Chemicals | No Damage | Min. Class AA | Class AA | ISO 10545 Part-13 IS 13630 Part-8 |
| Resistance To Acids & Alkalis (Except HF Acid) | No Damage | Min. Class AA | Class AA | ISO 10545 Part-13 IS 13630 Part-8 |
| Stain Resistance | Min. Class 3 | Min. Class 1 | Class 1 | ISO 10545 Part-14 IS 13630 Part-8 |

**Not Applicable for structured Tiles

Packing Specification

| Size (mm) | Thickness (mm) | Weight (Kg.) | No. of Tiles / Box | Area Sq. mtr./ Box |
|-------------------------|----------------|--------------|--------------------|--------------------|
| 300x300mm (Unrectified) | 7.2 mm | 13.1 kg. | 10 pcs. | 0.90m ² |

| CHARACTERISTICS | Requirement as per ISO 13006:2018 Gr B11a 3.0 ≤ E ≤ 6.0% | Requirement as per IS 15622:2017 Gr B11a 3.0 ≤ E ≤ 6.0% | AGL Value | Test Method |
|--|--|--|--|---------------------------------------|
| (A) DIMENSION & SURFACE QUALITY | | | | |
| Deviation In Length & Width | ± 0.3%, ± 1.0 mm | ± 0.1% | ± 0.1% | ISO 10545 Part-2 IS 13630 Part-1 |
| Deviation In Thickness | ± 5.0%, ± 0.5 mm | ± 5.0% | ± 3.0% | ISO 10545 Part-2 IS 13630 Part-1 |
| Straightness of Edge | ± 0.3%, ± 0.8 mm | ± 0.1% | ± 0.1% | ISO 10545 Part-2 IS 13630 Part-1 |
| Rectangularity | ± 0.3%, ± 1.5 mm | ± 0.1% | ± 0.1% | ISO 10545 Part-2 IS 13630 Part-1 |
| Surface Flatness | ± 0.4%, ± 1.8 mm | ± 0.5% | ± 0.25% | ISO 10545 Part-2 IS 13630 Part-1 |
| Surface Quality | Min. 95% of Tiles shall be free from visible defects that would impair the appearance of a major area of the tiles | Min. 95% of Tiles shall be free from visible defects that would impair the appearance of a major area of the tiles | Min. 95% of Tiles shall be free from visible defects that would impair the appearance of a major area of the tiles | ISO 10545 Part-2 IS 13630 Part-1 |
| (B) PHYSICAL & THERMAL PROPERTIES | | | | |
| Water Absorption % By Wt. | 3.0 ≤ Eb ≤ 6.0, Ind. 6.5 Max. | 3.0 ≤ Eb ≤ 6.0 Ind. 6.2 Max. | 5.0-6.0% | ISO 10545 Part-3 IS 13630 Part-2 |
| Flexural Strength (MOR) In N/mm ² | Avr. 22, Ind. Min. 20 | Avr.22, Ind. Min. 20 | ≥ 25 N/mm ² | ISO 10545 Part-4 IS 13630 Part-6 |
| Breaking Strength in N | 1000 N Min. | 1000 N Min. | > 1000 N | ISO 10545 Part-4 IS 13630 Part-6 |
| Resistance to Surface Abrasion | Manufacturer to State Class | PEI II Min. | Min. III | ISO 10545 Part-7 IS 13630 Part-11 |
| Co-efficient of Linear Thermal Expansion from ambient temp to 100°C (K ⁻¹) | 9x10 ⁻⁶ Max. | 9x10 ⁻⁶ Max. | ≤ 9x10 ⁻⁶ | ISO 10545 Part-8 IS 13630 Part-4 |
| Thermal Shock Resistance | 10 Cycles Min. | 10 Cycles Min. | No Damage after 10 Cycles | ISO 10545 Part-9 IS 13630 Part-5 |
| Moisture Expansion in mm/M | Test Method Available | 0.03 Max. | Nil | ISO 10545 Part-10 IS 13630 Part-3 |
| Crazing Resistance | Required | 4 Cycles at 7.5 bar Min. | Resistance | ISO 10545 Part-11 IS 13630 Part-9 |
| Frost Resistance | Resistance | Resistance | Resistance | ISO 10545 Part-12 IS 13630 Part-10 |
| Moh'S Scratch Hardness | Min. 5 | Min. 4 | Min. 4 | EN 101 IS 13630 Part-13 |

| (C) CHEMICAL PROPERTIES | | | | |
|--|--------------|---------------|----------|--------------------------------------|
| Resistance To Household Chemicals | No Damage | Min. Class AA | Class AA | ISO 10545 Part-13 IS 13630 Part-8 |
| Resistance To Acids & Alkalis (Except HF Acid) | No Damage | Min. Class AA | Class AA | ISO 10545 Part-13 IS 13630 Part-8 |
| Stain Resistance | Min. Class 3 | Min. Class 1 | Class 1 | ISO 10545 Part-14 IS 13630 Part-8 |

**Not Applicable for structured Tiles

Packing Specification

| Size (mm) | Thickness (mm) | Weight (Kg) | No. of Tiles / Box | Area Sq. mtr./ Box |
|-----------|----------------|-------------|--------------------|--------------------|
| 397x397mm | 8.0 mm | 13.1 kg. | 05 pcs. | 0.79m ² |
| 397x397mm | 8.0 mm | 16.0 kg | 06 pcs. | 0.94m ² |

UNDERSTANDING ICONS



APPLICATION



NOTES

- All Technical Specifications in This Catalogue are for Premium Grade Material only.
 - SHADE/SIZE VARIATION are inherent characteristics to ceramics. Certain products purposely have variations which are part of design & process. The same have been indicated.
 - It is recommended to blend tiles by mixing tiles from various boxes & check for natural hue before fixing the tiles.
 - It is recommended to check the tiles before laying/fixing. Quality standards cover 1st/Premium Quality only.
 - Company's liability is limited on material that has not been laid.
 - NO COMPLAINT SHALL BE ENTERTAINED ON TILES ALREADY FIXED/LAID.
 - The liability is also limited to the material supplied by the company; no other claim is entertained under any circumstances.
 - No complaint is entertained on decoration done on tiles, other than the ones done by Asian Granito India Ltd.
- GENERAL NOTE : Any complaint must be brought to the company's notice within 10 days of purchase & before fixing of tiles.

How to avoid defects & complaints :

- Use good quality Tiles
- Choose good quality Tiles, with proper consideration to area intended of usage.
- Avoid careless laying of Tiles
- Avoid poor maintenance-for instance, by cleaning with strong Chemicals or with abrasive equipment e.g. metallic scrubber
- Always keep Tiled area clean & ensure dusting/mopping regularly
- Put Doormats/Foot-mats at all strategic locations to avoid loose debris/dust from entering the Tiled area

List of Detergents For Removal of Stain

| STAIN (Created By) | Beer | Blood | Calcar | Cement | Cigarette | Soft Drinks | Coffee | Edible Oil | Glue | Ice Cream | Ink | Juices | Marker Ink | Nicotine | Paints | Resin | Rust | Tar | Tea | Turmeric | Wine |
|--|------|-------|--------|--------|-----------|-------------|--------|------------|------|-----------|-----|--------|------------|----------|--------|-------|------|-----|-----|----------|------|
| SOLVENTS (Turpentine, acetone, trichloroety - line etc.) | | | | | | | | • | • | | • | | • | | | • | | • | | | |
| SODIUM HYPO (Chlorite (NaOCL)) | | | | | | | | | | | | • | | | | | | | | • | |
| ACIDS DILUTED (Hydrochloric acid*) | | | • | • | • | | | | | | • | | | • | • | | • | | | • | |
| ALKALI (Sodium hydroxide/potassium hydroxide) | • | • | | | | • | • | | | • | | | | | | | | | | | • |

*Commercial grade shall not be used

DISCLAIMER : Asian Granito India Ltd. reserves the right to delete & amend either totally or partially, any of the colors, shapes, sizes, references and other technical specifications contained in this catalogue at anytime. The colors shown of tiles in this catalogue are purely illustrative and limited to printing process. Please refer actual sample before final selection. The details of sizes, colors, references should be verified for typographical errors. All complaints need to be reported within 10 days of purchase. Always follow instructions to avoid complaint due to bad masonry.

CORPORATE OFFICE & BRANCHES

DISPLAY CENTRE & OFFICE

GUJARAT

■ **Display Centre - Ahmedabad**
AGL Luxury Tile Arcade
 S.G. Highway, Nr. Gota Cross Road,
 Beside Gota over bridge, Ahmedabad - 382481.
 Mobile: 98258 03713 / 99099 29920
 E-mail: asianworld.amd@aglasiangranito.com

■ **AGL Export House - Morbi**
 Ch-5, Eden Ceramic City,
 Opp.Honest Hotel, National Highway,
 Lalpar Road Morbi - 363642.
 Mobile: 99799 90591
 E-mail: exportmorbi@aglasiangranito.com

■ **Factory Display Centre - Morbi**
(Sanitaryware & Faucets)
AGL Sanitaryware Pvt. Ltd.
 Survey No. 153 P1, 153 P2, 154 P2, 8A National
 Highway, B/h. Bahadurgadh Bus Stand,
 At. Bahadurgadh, Morbi-363642. Gujarat, India.
 Mobile: 11
 E-mail: 11

MAHARASHTRA

■ **AGL Display Centre - Mumbai**
 A- 402, Citi Point, Nr. kohinoor Hotel,
 Opp. ICICI Bank, J.B. Nagar,
 Chakala Metro Station, Andheri (East),
 Mumbai - 400 059.
 Mobile: 93214 95229
 E-mail: mumbaishowroom@aglasiangranito.com

■ **AGL Display Centre - Mumbai**
(Marblex & Grestek)
 Gala Impecca, Gr. Floor, Mathuradas VasANJI Rd,
 Next to Courtyard Marriott, J. B. Nagar,
 Kurla-Andheri Road, Andheri (East) - 400059
 Mobile : 7600098595

■ **AGL Display Centre - Pune**
 Capital Square, 1st & 2nd floor, Plot No.5,
 Nr. Laxminarayan Sweets, Industrial Estate,
 Mukund Nagar, Pune - 411037 Maharashtra.
 Mobile : 93717 65505



Scan for
360° Tour

TELANGANA

■ **AGL Display Centre - Hyderabad**
(Marblex & Grestek)
 202 Kurve Elite, 2nd Floor, 8-3-833/58 & 47,
 Plot No. 58, Phase-1, Kamala Puri Colony Main Rd,
 Opp. Krishe Meadows, Hyderabad-500073
 Mobile: 96420 00336 / 77779 15632
 E-mail: hydgv1@aglasiangranito.com

■ **AGL Display Centre - Hyderabad**
 # 8-2-294/82, Plot No. 39, Road No. 5,
 JubileeHills Land Mark, Near Venkatagiri Bustop.
 (Dominos Pizza) Metro Piller No.3,
 Hyderabad-500033
 Mobile: 96420 11146
 E-mail: hydshowroom@aglasiangranito.com

KARNATAKA

■ **AGL Display Centre - Bangalore**
Asian Granito India Ltd., Region Office
 Brahmananda Court, No.37/17, Nr. ICICI Bank,
 Lalbagh Road, Bangaluru - 560027 Karnataka
 Mobile: 81605 21204
 E-mail: bangloreshowroom@aglasiangranito.com

KERALA

■ **AGL Display Centre - Kochin**
 No.51/2910 D2 Adjacent To Bread World,
 Thykoodam Bridge Service Road,
 Vyttila Kochin - 682019
 Mobile: 80866 61920 / 78618 09641
 E-mail: cochinshowroom@aglasiangranito.com

WEST BENGAL

■ **AGL Display Centre - Kolkata**
 5th Floor, Office No. 5A, PS SOLARIS Building,
 113/H, Opp. Flaming Hospital. Matheswartala Rd.
 Topsia. Kolkata 700046.
 Mobile: 85840 65565
 E-mail: kolkattashowroom@aglasiangranito.com

UTTAR PRADESH

■ **AGL Display Centre - Noida**
 F-15, Ground Floor, Sector 8,
 Gautam Buddha Nagar,
 Noida - 201301 Uttar Pradesh
 Mobile: 7861806229

OFFICE

GUJARAT

■ **Corp. Office - Ahmedabad**
ASIAN GRANITO INDIA LTD.
 202, Dev Arc, Opp. Iskon Temple,
 S. G. Highway, Ahmedabad - 380 015
 Gujarat (INDIA)
 Phone: +91 79 66125500/698
 Toll Free: 1800 123 3455
 E-mail: info@aglasiangranito.com

■ **AGL Office - Morbi**
 B - 26, Parshwanath Complex-1
 Opp. kuber Cinema, 8-A National Highway,
 Lalpar Road, Morbi - 363642.
 Mobile: 9825802077
 E-mail: aglMorbi@aglasiangranito.com

RAJASTHAN

■ **AGL Office - Jaipur**
 Lower Ground, D-5, Vaishali Nagar,
 Jaipur, Rajasthan - 302021
 Mobile: 80085 03660 / 93144 39930

MADHYA PRADESH

■ **AGL Office - Indore**
 3rd Floor, Plot No 101, WB Scheme No. 94,
 Sector - B, Opp. HDFC Bank, Nr. Bombay Hospital,
 Indore - MP - 452010
 Mobile: 99092 62533 / 73140 06670
 E-mail: acctindore@aglasiangranito.com

TAMIL NADU

■ **AGL Office - Trichy**
 Mark Diamond Residency, No-36,
 V O C Road, cantonment. Trichy - 620001
 Mobile: 90161 13976

AGL Office - Coimbatore

No .70, Dr. Alagappa Road, Tatabad.
 Coimbatore - 641 012
 Mobile: 90161 13976

ODISHA

■ **AGL Office - Odisha**
 Plot No-83/C, Jayadurga Nagar Bomikhal,
 Bomikhal, Cuttack-Puri Road,
 Bhubaneswar-751006
 Mobile: 78618 09594 / 78944 35425

PUNJAB

■ **AGL Office - Chandigarh**
 CCC Chandigarh City Centre, Block A 3rd Floor,
 Soho 325, Vip Road, Near Metro Zirakpur,
 Chandigarh Punjab-140603
 Mobile : 93163 13880 / 99882 22471

