

A

INTRODUCTION

The Utah Division of Water Resources and the United States Bureau of Reclamation are jointly undertaking an unprecedented collaborative effort to develop the Great Salt Lake Basin Integrated Plan (GSLBIP). The goal of the GSLBIP is to ensure a resilient water supply for Great Salt Lake and all water uses, including people and the environment, throughout the watershed.

The GSLBIP is intended to be utilized by water users and decision-makers for collective water resource management in the basin. More specifically the GSLBIP, seeks to address water supply imbalances, increase supply reliability and avoid degradation of the vital Great Salt Lake ecosystem. Given the size, scope and complexity of the project, the Division of Water Resources needs a road map to complete the GSLBIP. This GSLBIP Work Plan is the road map.

The draft Work Plan, completed in November 2023, contains valuable insights into the requirements for the GSLBIP and is the foundation that this work plan actions document builds from. Public comments received on the draft Work Plan have been integrated into the final Work Plan, where appropriate, and will be taken into account during the development of the GSLBIP.

Moving forward, the draft Work Plan document will be referred to as the Work Plan Foundation

document. This document builds upon the recommendations in the Work Plan Foundation document by providing specific detail on the tasks necessary for the completion of the GSLBIP by late 2026 and will be referred to as the Work Plan Actions document. Together, the Work Plan Foundation document and the Work Plan Actions document will be referred to as the Final Work Plan.

While the Final Work Plan outlines the essential tasks, the basin planning process will continually evolve into the future. Adaptations to the processes will be made as necessary as more information and data become available.

After the release of the Work Plan Foundation document, the Office of the Great Salt Lake Commissioner released its first-ever Great Salt Lake Strategic Plan. The strategic plan intends to provide a balanced approach to water management in the Great Salt Lake Basin that protects the health and sustainability of Great Salt Lake. The GSLBIP will provide information and tools to improve water management decision-making in the Great Salt Lake Basin, supporting future planning and the implementation of the strategic plan. Throughout the development of the GSLBIP, the Office of the Commissioner will provide direction and guidance to the GSLBIP project team.

Figure A-1. GSLBIP schedule



PARTNERS IN THE GSLBIP

Developing an effective water management plan for the Great Salt Lake Basin depends on careful and persistent collaboration with partners throughout the basin. Each part of the planning process requires involvement from a varied group of individuals. The success of the project depends on the partnerships and support that are developed throughout the planning process. Success will be achieved when basin water users willingly adopt and help implement this plan.

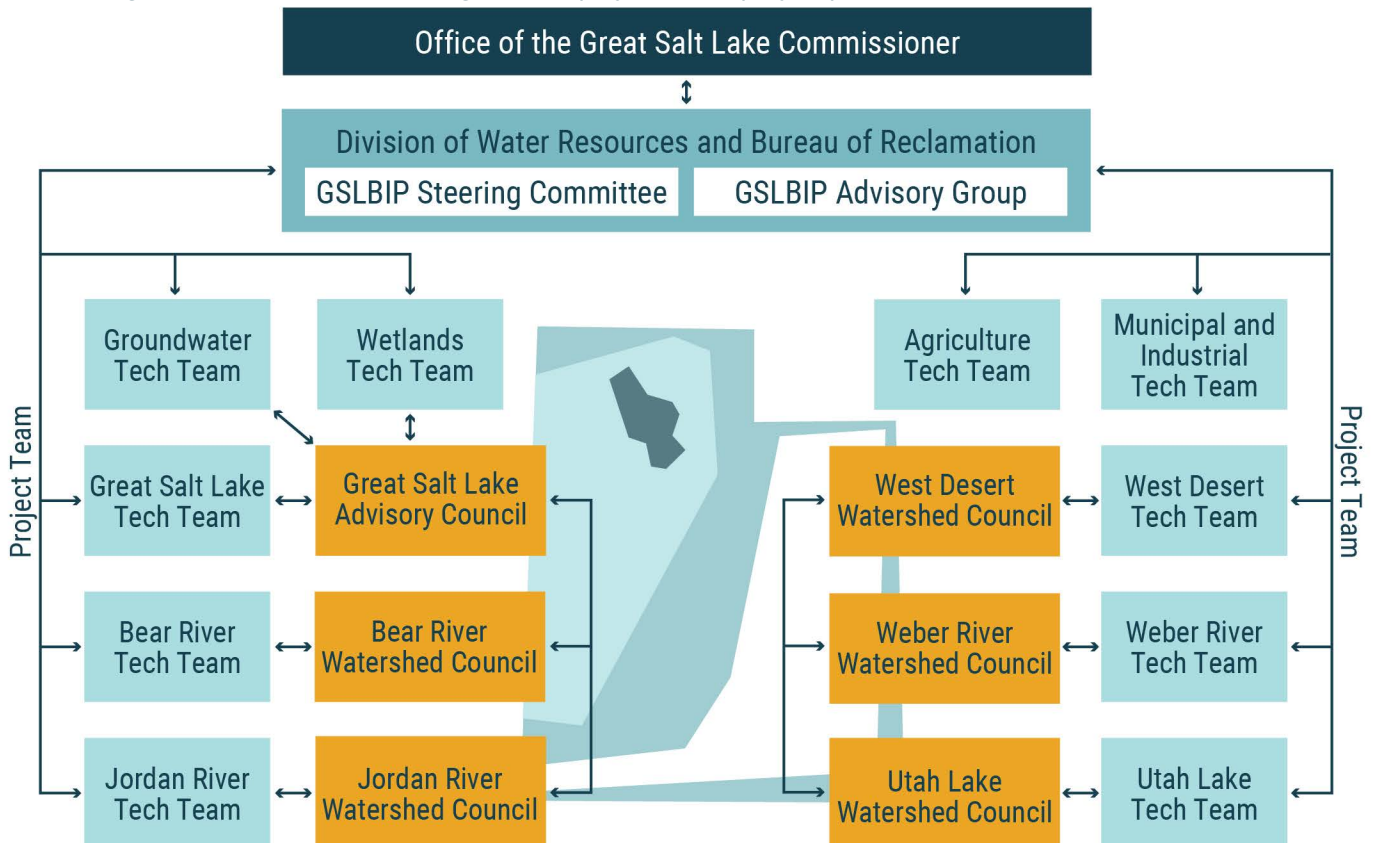
The term “partner,” for the purposes of the GSLBIP, is considered an individual, group or entity that has a concern or interest in water planning in the Great Salt Lake Basin. The following partner groups will be involved in the development of the GSLBIP:

- **Great Salt Lake Commissioner** — A position established by the Utah Legislature in 2023, the commissioner is tasked with balancing the diverse interests in the basin that impact Great Salt Lake and ensure coordination of agencies’

and entities’ efforts related to the lake. The commissioner’s office will provide oversight, review and guidance on all aspects of the GSLBIP. As mentioned above, the GSLBIP is also intended to inform the decisions made while implementing the 2024 strategic plan.

- **Project team** — The project team is composed of Division of Water Resources and Reclamation staff involved in developing the GSLBIP. It also includes contractors and specialists who are providing support to the division and Reclamation.
- **Advisory group** — Convened specifically for the development of the GSLBIP, the group is composed of state and federal agencies with an interest in managing water resources in the Great Salt Lake Basin. They will guide the GSLBIP development process, then review and advise the project team on activities, progress, technical products and findings from the GSLBIP development. The advisory group will also assess and advise the division and Reclamation on alignment with existing law, policy and efforts.

Figure A-2. Organizational chart illustrating the interplay between project partners



- **Steering committee** — Convened specifically for the development of the GSLBIP, the committee is composed of individuals representing diverse interests throughout the basin who have a stake in how water is used and managed. They will guide the GSLBIP development process, then review and advise the project team on activities, progress, technical products and findings from the GSLBIP development.
- **Technical teams** — The technical teams are a subgroup of the project team. They are created specific to each river basin and are composed of individuals who have the technical knowledge and experience with hydrologic modeling and data analysis. They will work closely with the project team and their respective watershed council or Great Salt Lake Advisory Council (GSLAC) throughout the modeling and planning phases of the project.
- **Watershed councils** — Initiated in 2020, the five watershed councils in the Great Salt Lake Basin provide a forum for discussions of water policy and watershed issues between balanced and diverse partners. With regard to the GSLBIP, each watershed council will represent the diverse interests of their respective river basin, advise the project team on the challenges they face regarding water supply and management, and review documents and make recommendations to the advisory group, steering committee and project team. Each watershed council will work with their respective technical team to define and assess their water budgets and evaluate potential solutions and trade offs during the GSLBIP planning process. Should formation of the Great Salt Lake Watershed Council occur, per the current language in the Watershed Councils Act, the project team will work with the Great Salt Lake Watershed Council in the same manner that it engages the basin watershed councils.
- **Great Salt Lake Advisory Council** — GSLAC will serve the same role as a watershed council, listed above, but do so for Great Salt Lake.
- **Water users** — Defined as large water right holders in the Great Salt Lake Basin, this group includes water conservancy districts, canal companies, wetland managers, municipalities, industries and other water right holders. Given their expertise and data, members of this group could be involved in the modeling and planning phases of the project. This could occur through individual consultation, meetings or workshops.
- **Public participants**
 - **Relevant parties** — County and city governments (non-elected officials), non-governmental and conservation organizations, industry groups and research entities.
 - **Policymakers** — Composed of federal, state and local office holders, members of this group include the Utah Legislature and local municipal officials such as mayors, city councils and county commissions.
 - **Media** — Media groups include print, radio and television at local and national levels.
 - **General public** — All interested parties and residents of the Great Salt Lake Basin.

STEPS OF THE GSLBIP

The following sections in this Work Plan Actions document highlight the steps necessary to complete the GSLBIP planning process. The tasks in each section are to be used as guidance as we work through this multi-year process. The tasks are dependent on one another and build upon each other. Given the complexity of the project, numerous tasks will be occurring simultaneously and tasks within each of the sections will inform tasks in other sections. The involvement of our

basin partners is critical to project success and woven into the planning process, as indicated in the following sections. This Work Plan Actions document contains the following sections and elaborates on the information contained in Appendices C, H and I and of the Work Plan Foundation document:

- **Planning Approach**
- **Modeling Approach**
- **Partner Engagement**

Figure A-3. Timeline for the four sections of the GSLBIP: planning, modeling, partner engagement and reporting

