

CSTD 2023-2024 Inter-sessional Panel

Information Note to Participants

6 and 7 of november, 2023

Congress center at Campus LNEC

Avenida do Brasil, 101
1700-066 LISBOA
PORTUGAL

INTRODUCTION AND DRAFT PROGRAMME

The 2023-2024 United Nations Commission on Science and Technology for Development (CSTD) inter-sessional panel is organized by the United Nations Conference on Trade and Development (UNCTAD) and hosted by the Ministry of Science, Technology and Higher Education of Portugal. It will be held in-person in the Congress Centre at Campus LNEC.

The Notification and Draft programme for the CSTD Inter-sessional Panel can be found at:

<https://unctad.org/meeting/commission-science-and-technology-development-2023-2024-inter-sessional-panel>

REGISTRATION

All participants must register in advance.

Early registration is encouraged. All registrations must be received no later than 20 October 2023.

Please complete the Registration Form online here:

<https://indico.un.org/event/1002483/>

CONTACTS

All questions related to the substantive programme should be addressed to:

Ms. Ana Cristina das Neves, Chairperson of the CSTD
Director, Fundação para a Ciência e a Tecnologia, I.P.
Ministry of Science, Technology and Higher Education
Lisbon, Portugal
Tel: +351 912 397 371
E-mail: ana.neves@fct.pt

Ms. Liping Zhang, Chief, Science, Technology
and Innovation for Development Section
Division on Technology and Logistics
UNCTAD
Geneva, Switzerland
Tel: +41 22 917 5701
E-mail: liping.zhang@un.org

All questions related to administrative and logistical preparations should be addressed to:

CSTD Secretariat
Division on Technology and Logistics
UNCTAD
Geneva, Switzerland
E-mail: stdev@unctad.org

All questions related to transportation within Lisbon and logistics concerning the conference center could be addressed to:

Conference management team
Ms. Catarina Lopes
Marketing & Communications
Fundação para a Ciência e a Tecnologia
Unidade FCCN – Computação Científica Nacional
Av. do Brasil, 101, 1700-066 Lisboa, Portugal
Tel: +351 218 440 100
E-mail: c.imagem@fccn.pt

VENUE

The venue for the CSTD inter-sessional panel is located at Campus LNEC (map of the campus provided in Annex A)

A local street map with the location of the venue is provided in Annex B.

Link to the venue: <https://www.lnec.pt/en/congress-centre/>

ACCOMODATIONS

Participants are welcome to make reservations at the hotel of their choice.

Participants are encouraged to make hotel reservations well in advance. Hotels might require participants' credit card information upon booking and require participants to present their credit cards during check-in to guarantee the booking of their room and to cover any incidental charges incurred during their stay. Participants will be responsible for any cancellation fees.

LIST OF HOTELS WHERE YOU CAN STAY:

Hotel	Adress	Rating	Distance from the venue
VIP Grand Lisboa Hotel & Spa	Avenida 5 de Outubro 197, 1050-054 Lisboa	★★★★★	2 km
MASA Hotel & Spa Campo Grande Collection	Campo Grande 56 56A, 1700-093 Lisboa	★★★★☆	1,1 km
Radisson Blu Hotel Lisbon	Av. Mal. Craveiro Lopes 390, 1749-009 Lisboa	★★★★☆	1,1 km
NH Lisboa Campo Grande	Campo Grande 7, 1700-087 Lisboa	★★★★☆	1,3 km
Lutecia Smart Design Hotel	Av. Frei Miguel Contreiras 52, 1749-086 Lisboa	★★★★☆	1,4 km
VIP Executive Entrecampos Hotel	Avenida 5 de Outubro 295, 1600-035 Lisboa	★★★★☆	1,5 km
Hotel 3K Europa	Av. da República 93, 1050-190 Lisboa	★★★★☆	1,8 km
VIP Inn Berna Hotel	VIP Inn Berna Hotel	★★★☆☆	1,9 km
Hotel Alif Campo Pequeno	Av. João XXI 80, 1000-081 Lisboa	★★★☆☆	1,9 km
Star inn Lisbon Airport	Aeroporto Humberto Delgado, R. C, 1749-125 Lisboa	★★★☆☆	1,9 km
VIP Executive Zurich Hotel	R. Ivone Silva 18, 1050-124 Lisboa	★★★☆☆	1,9 km

ARRIVAL AND ENTRY FORMALITIES

Visas and entry to Portugal

You can find all the information about the requirements to enter Portugal here:

<https://vistos.mne.gov.pt/en/short-stay-visas-schengen/general-information/who-needs-a-visa>

OFFICIAL LANGUAGE

English will be the official language for the panel.

ATTIRE

The dress code for all the meetings is business attire, unless otherwise advised. Because the intersessional panel will take place during the Autumn in Lisbon, lightly warm clothes are necessary.

COUNTRY GENERAL INFORMATION

Climate and weather

November in Lisbon offers mild weather, with daytime temperatures ranging from 15°C to 19°C (59°F to 66°F) and occasional rain. Expect 5 hours of daily sunshine and moderate humidity. Be sure to check the local weather forecast for any updates.

Currency and banking

Portugal's currency is Euro.

You can find ATMs at most bank branches, at airports and train stations, or in central areas and shopping centres. In general, expect a small withdrawal fee, especially if you're withdrawing from a foreign account.

Here you can find the list of ATMs near the venue area:

https://network.americanexpress.com/globalnetwork/atm_locator/en/#search/38.758608/-9.139833099999999

Credit Cards

The majority of credit cards are widely accepted in Lisbon although some small shops will only accept cash payments. Visa and MasterCard, can be used at most establishments.

In the event that a card is lost or stolen, the appropriate Portuguese numbers to call are:

Master Card: 800 811 272

Visa Card: 800 811 824

Time

Lisbon's standard time is WET/WESTERN European time (UTC/GMT +00)

Electricity and water

In Portugal the standard voltage is 230 V and the frequency is 50 Hz.

You can use your electric appliances in Portugal, if the standard voltage in your country is in between 220 - 240 V (as is in the UK, Europe, Australia and most of Asia and Africa).

Tap water in Portugal is safe to drink

About Lisbon

Lisbon is the capital and the largest city of Portugal. With over 20 centuries of History, this city located on the 7 hills has more than 500,000 inhabitants.

Lisbon shows multiple contrasts between the historical and modern, combining different cultures, trends and lifestyles. Situated near the Tagus river and sunny almost all the time, the Portuguese capital has a unique beauty and an internationally acclaimed architectural singularity.

The gastronomy of Lisbon is very influenced by its proximity to the sea. So typical specialties in Lisbon are Cozido à Portuguesa, fried green beans, and grilled sardines on bread (mainly in the feast of the popular saints that occurs during the month of June). The famous Bitoque is also considered a capital's "ex-libris" food. The most famous dessert in Lisbon is the traditional Pastel de Nata (custard tart), made in a former factory in Belém, better known as Pastel de Belém.

Public Transportation and airport taxi service

Getting to Lisbon

Lisbon is the capital and the largest city of Portugal. With over 20 centuries of History, this city located on the 7 hills and sunny almost all the time, has a unique beauty and an internationally acclaimed architectural singularity. Rich in monuments, neighborhoods (Baixa Pombalina, Belém, Bairro Alto, Chiado, Bica, Alfama and Mouraria), riverside zone, Fado houses, parks, gardens and viewpoints, Lisbon offers various possibilities to discover, so visit and enjoy the vast natural, historic and cultural city heritage.

Most visitors arrive by air transport. Humberto Delgado Airport in Lisbon has direct flights to more than 50 cities around the world. You may find more information on Humberto Delgado Airport here:
<https://www.aeroportoisboa.pt/en/lis/home>

Getting around

Within the capital, Lisbon, public transport is very well developed and multi-faceted. In Lisbon, the public transport ticket provided by Carris/Metro covers a single journey on trams, buses, trolleybuses, and urban railways. When using the metro network, this ticket is also valid for changing lines within the scope of a continuous journey. Additionally, you'll find a selection of officially registered taxi cabs and TVDEs that offer excellent service and operate using a standardized meter system. Taxi cabs usually only accept cash (euros) and TVDEs accept bank card payments via their respective app.

You may find more information about public transportation here:
<https://www.carris.pt/en/buy/occasional-journeys>

If you prefer driving on your own, you'll discover a variety of car rental companies ready to assist you. However, it's important to note that parking within the city can be relatively expensive. Look for blue parking signs to identify permissible parking areas, and consult parking pay stations for information about the specific hours when parking fees apply. Typically, evenings and weekends are exempt from charges, but these times can differ from one zone to another, with enforcement carried out through fines and, in some cases, vehicle immobilization. For further details on driving, car rental, and parking, refer to additional resources.

Online route-planner for public transportation:

www.google.com/maps

Other useful telephone numbers:

International emergency call centre: 112

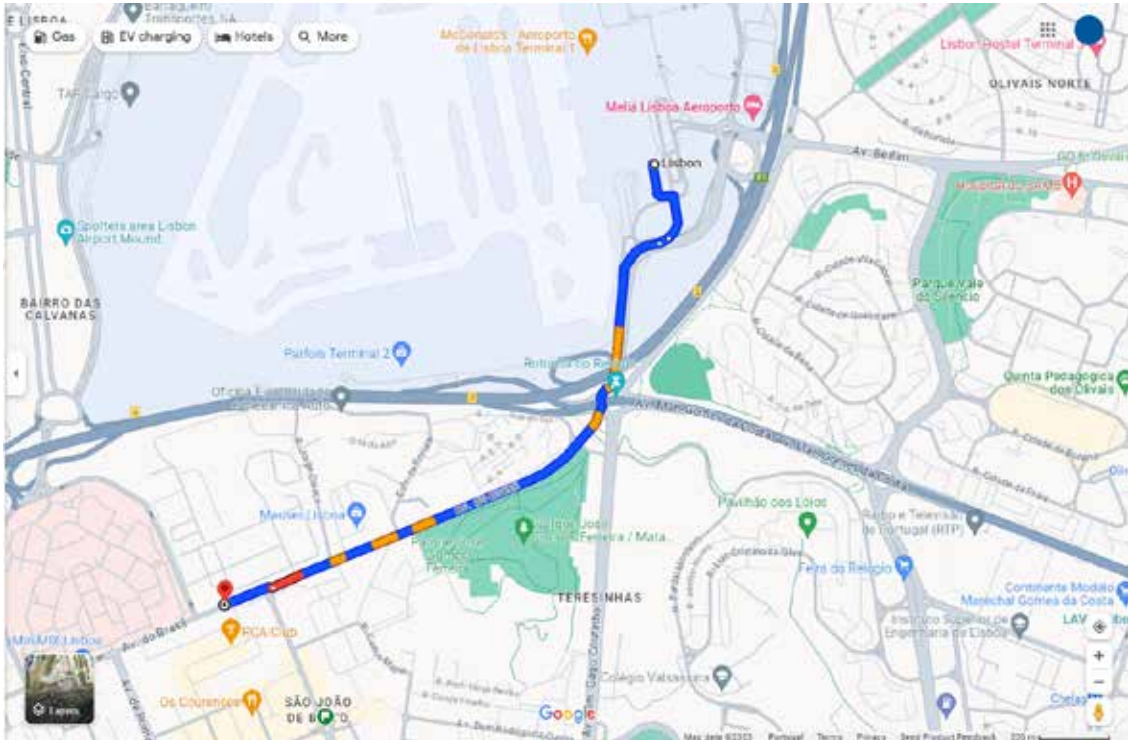
The above phone number can be called free of charge.

Smoking

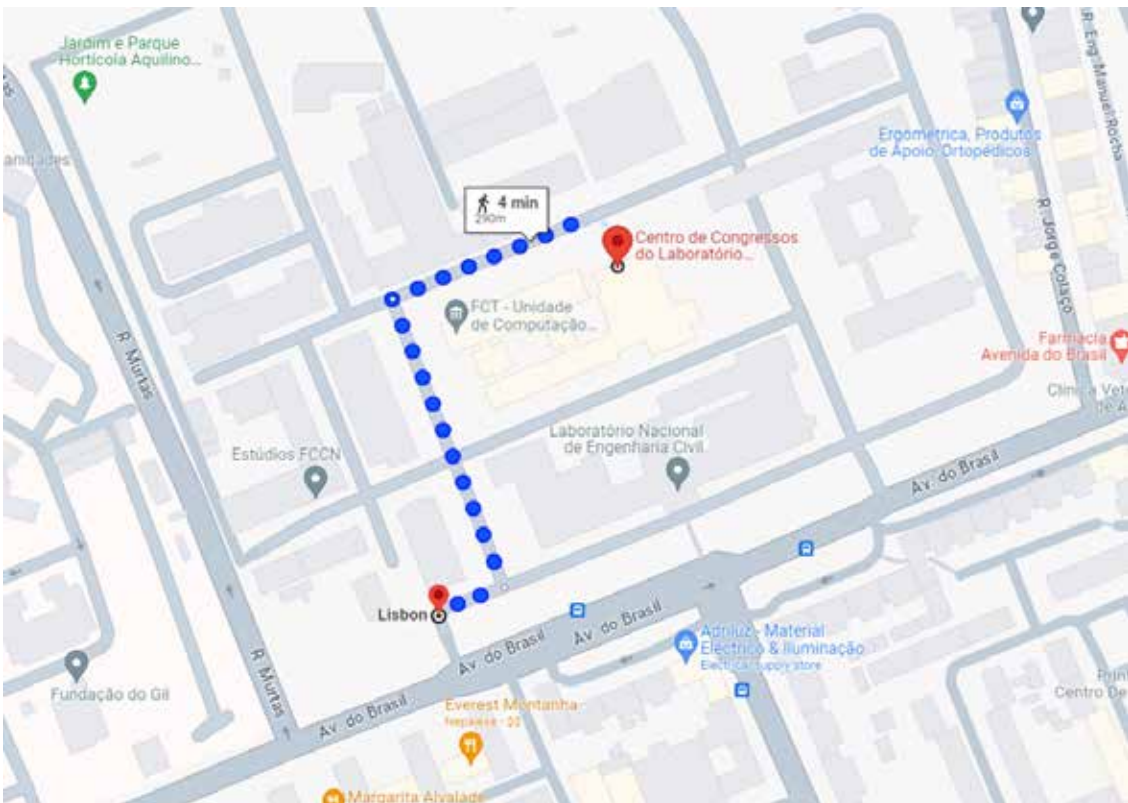
Smoking is prohibited in government buildings, public buildings, restaurants, and indoor bars.

Additionally, hotels often charge a substantial cleaning fee to guests who smoke in non-smoking rooms, so smokers should make sure to confirm the smoking status of their room during hotel check in. Unless otherwise indicated, smoking is permitted outdoors away from non-smoking building entrances.

HOW TO GET TO THE VENUE: Annex A



Annex B



CONGRESS CENTER PLAN:

