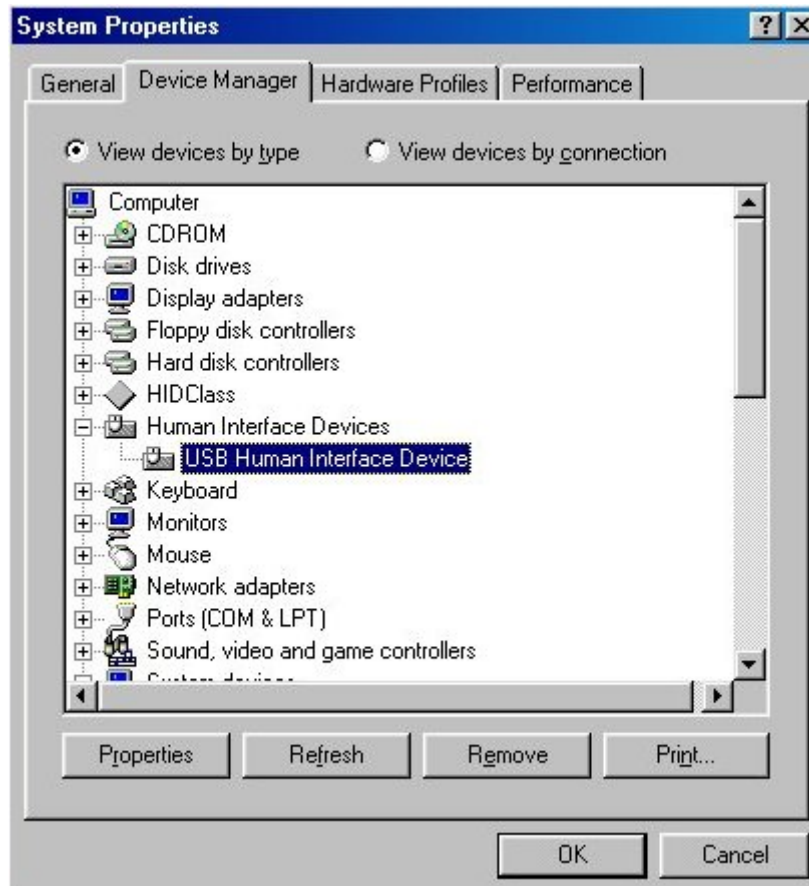


**My Thrustmaster USB accessory isn't recognized in the Gaming Options (or Game Controllers) section of the Control Panel, or in games. What should I do?**

First, verify that the accessory is installed on your computer:

Click on **Start/Settings/Control Panel/System/Hardware/Device Manager**, and then click on the + sign to the left of the **Human Interface Devices** entry. You should see a **USB Human Interface Device** entry (or the name of your accessory) directly below.



If this is not the case, your USB ports are either:

- disabled: go into your motherboard's BIOS and enable your USB ports;
- non-functional: this problem has been detected with some motherboard models which require updates in order to function properly (update of the motherboard's BIOS, VIA chipset's 4 in 1 driver, VIA USB filter patch 1.10, etc.).

If a **USB Human Interface Device** entry appears, you have installed a defective version of DirectX, available on some game and magazine CDs and also on certain websites.

Thus, if no entry specific to your accessory appears in the **Game Controllers** list, it's not worth adding the accessory manually as it will only be displayed as **Not connected** with an error message relating to the game port.

**In this case, there are 3 solutions available:**

**A-** Sometimes all you need to do is unplug your Thrustmaster accessory from its USB port and then plug it back in again (with your PC switched on).

**B-** Install the full version of DirectX 9.0, available on Microsoft's website ([www.microsoft.com/directx](http://www.microsoft.com/directx)).

**Attention:** make sure to install the full version of DirectX 9.0. To be sure that you've got the right one, install the version found at the following link:



(<http://www.microsoft.com/directx/homeuser/downloads/default.asp>)

- Once this version of DirectX 9.0 has been downloaded and installed, restart your PC.
- Next, unplug the accessory from the USB port and restart your PC.
- Finally, once your PC is up and running again, plug the accessory back into the USB port. Its name should appear automatically in the **Gaming Options** (or **Game Controllers**) window.

**C-** If neither of the two suggestions described above resolve the problem, you will have to reinstall the operating system on top of the one currently on your PC, as DirectX is not uninstalling itself:

- Unplug your Thrustmaster accessory from its USB port.
- Reinstall Windows on top of the operating system currently installed on your PC.
- Don't worry – no data will be lost!
- Plug your Thrustmaster accessory back into the USB port.
- Go to the **Game Controllers** (or **Gaming Options**) window: the controller's name will appear automatically.