

# Teach • Coach



**Teach and Coach support effective and high-quality teaching for all.**

*Teach* is a classroom observation tool that helps countries measure and track teaching quality. The *Coach* program builds on *Teach*, supporting countries to improve in-service teacher professional development (TPD) programs and systems based on teachers' needs.

*Teach and Coach* contribute to enhancing the support that teachers receive to improve their classroom practices, ultimately helping drive student learning and address learning poverty.

## THE CRITICAL ROLE OF TEACHERS IN EDUCATION

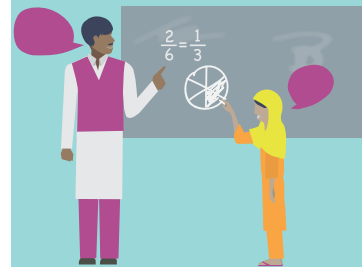
**Teachers are the lynchpin of education systems around the world. They are the single most important in-school factor affecting how much students learn.**

Going from a poor-performing teacher to a great teacher can increase student learning by multiple years of schooling. Great teachers also have a substantial impact on the well-being of students throughout their lives, affecting not only their academic achievement, but also long-term social and labor outcomes, well after their schooling years.

**The challenges brought on by COVID-19, in addition to the global learning crisis underway before the pandemic, require strengthening teachers' capacities to teach well and meet the evolving challenges educational systems face today.**

- In spite of the importance of quality teaching, many countries do not currently measure or track teaching practices today.
- Evidence shows that many teachers around the world today do not have access to good-quality professional development opportunities, to help them improve what they do in the classroom.
- It is perhaps unsurprising, then, that studies show that unprepared and poorly trained teachers struggle to teach a complex curriculum, which even they have a weak grasp on. As a result, too many students across the world sit in classrooms exposed to ineffective teaching every day.

**Thus, poor teaching is not the fault of teachers, but the result of system-level policies that do not appropriately prepare, support, and motivate teachers to improve and succeed. That's where *Teach* and *Coach* come in.**



## TRACKING TEACHING QUALITY WITH TEACH

The first step toward offering better support to teachers so they can improve their teaching is to measure current teaching practices. *Teach* was developed with this goal in mind. Launched in 2019, *Teach* is the World Bank's suite of free and open-source classroom observation tools. It provides a window into one of the less explored and most important aspects of student learning: what goes on in the classroom. The tool has been designed to help countries track and improve teaching quality. *Teach* is currently available for the early childhood education (ECE) and primary grade levels, and will soon be available for secondary.

### WHAT DOES TEACH MEASURE?

TEACH CAPTURES:



**01** The **time** teachers spend on learning and the extent to which students are on task;



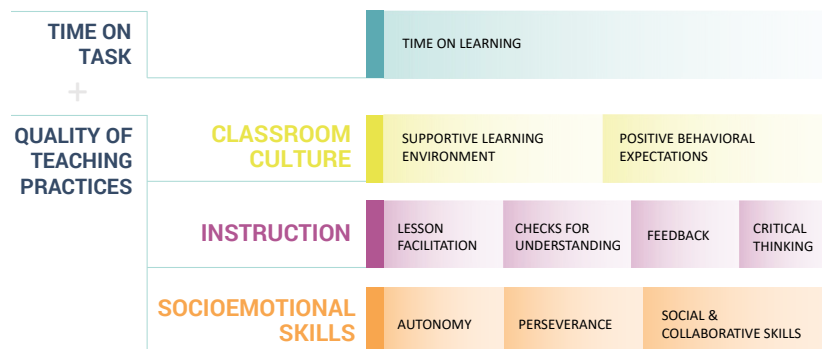
**02** The **quality** of teaching practices that help develop students' socioemotional and cognitive skills; and



**03** Other **aspects of the learning environment** such as the accessibility of the physical environment, including the classroom set-up and materials available.

*Teach* has a cross-cutting focus on inclusion, providing a common language to encourage teaching that is inclusive and responsive to the needs of all students, and that facilitates whole-child development.

### TEACH FRAMEWORK

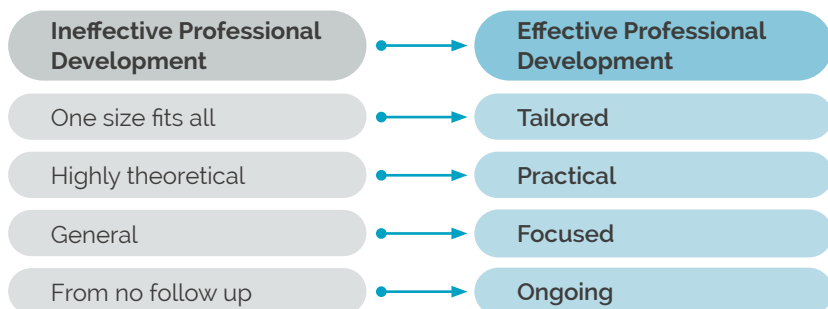


To learn more, please visit our [website](#) or watch [this introductory video](#). For more information on the tool's theoretical framework and its validity and reliability, please consult the [Teach-related Research page](#).

## BUILDING HIGH-QUALITY SYSTEMS OF SUPPORT FOR TEACHERS WITH COACH

*Coach*, unlike *Teach*, is not a tool, but it is the World Bank's global initiative focused on helping countries improve in-service teacher professional development (TPD) programs and systems to accelerate student learning. *Coach* has the goal to help countries design, implement, and evaluate high-quality TPD programs and systems that align with best practice and evidence. The *Coach* program adopts a three-pronged approach to achieve this goal: the development of technical tools and resources; direct operational support in the field; and an engagement strategy to position the importance of high-quality TPD within the international and national teacher policy landscape.

### Coach Principles for Effective In-Service Teacher Professional Development:



To learn more about *Coach*, please visit our [website](#) or watch [this introductory video](#).

