



HONG KONG SAR, CHINA

Region: East Asia and Pacific
Income Category: Lower Middle Income



Human capital – knowledge, skills, and good health – empowers people to achieve their potential and drives economic growth. This brief tracks progress by Hong Kong in building and using human capital. The Human Capital Complementary Indicators offer a snapshot of human capital investments at four stages of the lifecycle. The figures show the latest available data, benchmarked against regional averages. The figures also report progress over the previous 5 years.

EARLY CHILDHOOD

- **Pre-primary school gross enrollment ratio.** The pre-primary school gross enrollment ratio is **94%** (by the official age) (2020), compared to 108% in 2015. The indicator is higher than the regional average.
- **Net enrollment rate, early childhood education.** In 2022, **97%** of children at the official age were enrolled at early childhood education. This remains unchanged since 2017. The indicator is above the regional average.
- **Population with basic sanitation services.** In 2022, **97%** of the population had access to improved sanitation facilities at home. This remains unchanged since 2017. The indicator is higher than the regional average.

SCHOOL AGE

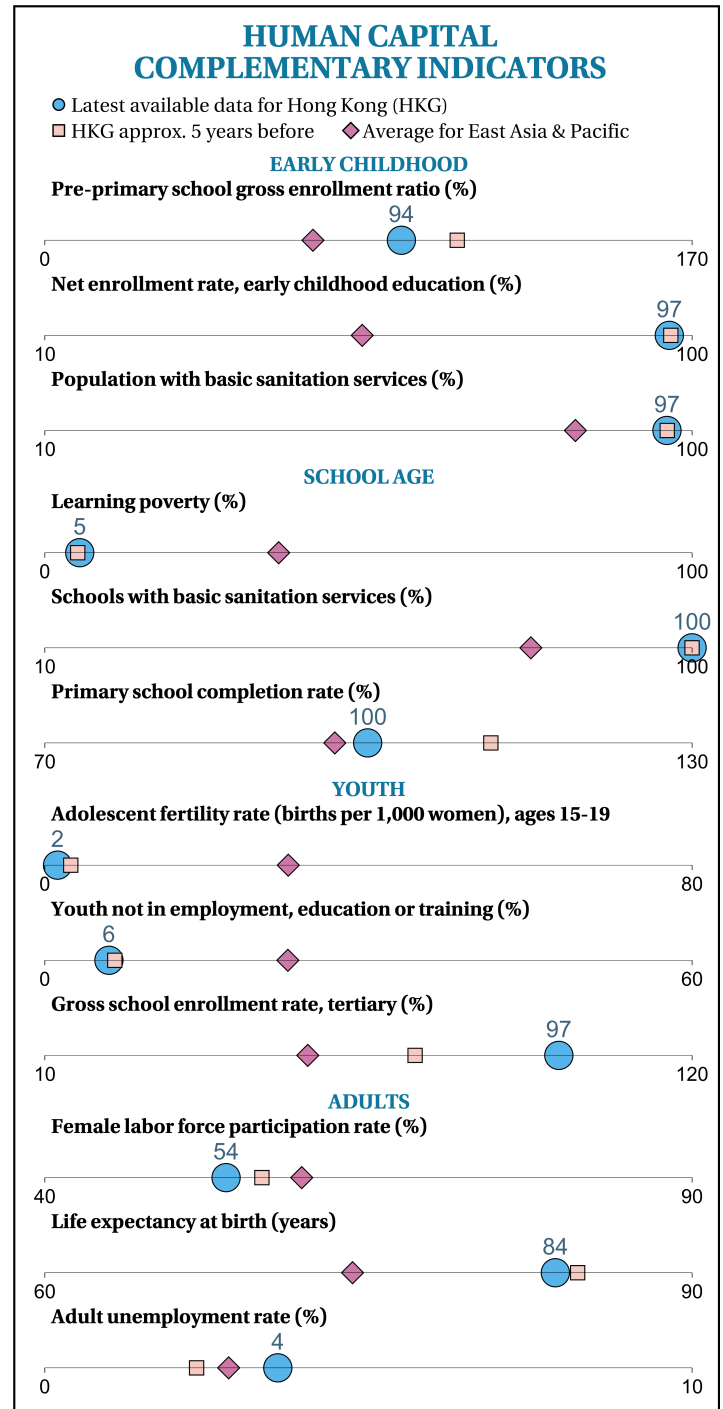
- **Learning poverty.** In 2021, **5%** of children could not read and understand a simple text, by age 10. This remains unchanged since 2016. The indicator is lower than the regional average.
- **Schools with basic sanitation services.** The share of schools with sanitation facilities is **100%** (2023). This remains unchanged since 2018. The indicator is above the regional average.
- **Primary school completion rate.** The primary school completion rate is **100%** (by the official entrance age of the last grade) (2022), compared to 111% in 2017. The indicator is higher than the regional average.

YOUTH

- **Adolescent fertility rate.** The number of births for every 1,000 women ages 15-19 is **2** (2022), compared to 3 in 2017. The indicator is lower than the regional average.
- **Youth not in employment, education or training.** In 2023, **6%** of youth (ages 15-24) were not in employment, education or training. This remains unchanged since 2018. The indicator is below the regional average.
- **Gross school enrollment rate, tertiary.** Tertiary school enrollment as a percentage of people ages 18-24 is **97%** (2022), compared to 73% in 2017. The indicator is higher than the regional average.

ADULTS

- **Female labor force participation rate.** Female labor force participation as a percentage of the female working-age population (ages 25+) is **54%** (2023), compared to 57% in 2018. The indicator is lower than the regional average.
- **Life expectancy at birth.** Life expectancy at birth is **84** years (2022), compared to 85 in 2017. The indicator is above the regional average.
- **Adult unemployment rate.** Unemployed adults as a share of the adult labor force (ages 25+) is **4%** (2023), compared to 2% in 2018. The indicator is higher than the regional average.



Note: Missing symbols indicate internationally comparable data are not available to generate the corresponding statistic.

