

The Counter

The logo for 'The Counter' features the word 'The' in a bold, sans-serif font above the word 'Counter' in a larger, bold, sans-serif font. To the right of the text is a graphic element consisting of a horizontal line that extends from the end of 'The', then turns 90 degrees downward to form a vertical line, and finally turns 90 degrees to the left to form a horizontal line that ends at the right edge of the 'Counter' text.

Annual Report
October 2020 - September 2021

Welcome

How non-profit, non-partisan journalism meets the moment.

When I look back on 2021, I can't help but reflect on where the nation was at the end of 2020, when a once-in-a-lifetime pandemic was instilling an atmosphere of fear and helplessness, seizing up economic activity, and aggravating the political polarization of the country, pushing all of us further and further away from each other and from common ground.

At the same time, a racial upheaval around social equity—however fractious—was transforming our country for the better. So much impetus to innovate and reform, while at the same time so much yearning to return uncritically to the seeming stability of familiar norms.

The heroes here have of course been the scientists, who have kept us from the pandemic's worst consequences. But also indispensable—amidst all the persistent uncertainty—has been credible journalism, doing its best to find the evidence underlying what we were all going through, tell its story, and validate what can be justifiably inferred from it.

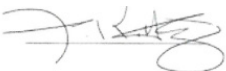
That is what we at The Counter will continue to do, to help you and your communities both make better personal decisions and have a keener sense of where the nation's best path ahead lies.

We are also looking to expand our readership into communities whose informational needs are underserved. We have made real strides in amplifying stories from the lives of Black farmers, and are part of a collaborative of non-profit newsrooms committed to covering issues affecting rural Americans. More plans are in the works for community-level audience engagement, and seeking staff members who are part of those communities.

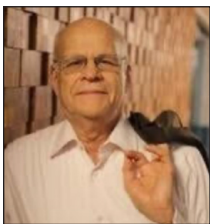
It is for you the reader that we put in the hours, follow the story, and challenge the status quo. We don't put our content behind a paywall, because it is too important that it be disseminated as widely as possible. For those of you who can afford to do so, your help has been a significant factor in helping us to continue doing this work. Thanks for challenging us and affirming what we do. To our entire team, it makes all the difference to know we have your support.

2022: So much more to learn, to understand, and to share with you.

Yours,



Jeffrey Kittay



Letter from the Editor-in-Chief

Here I am, new document open; ready to tally in prose the sum total of our 2021. And all I can think is: You already know what happened. If I were advising a reporter on how to tackle this lede, I'd say, don't bother trying to find a new way to write "global crisis," everybody knows where we've been.

As I write, we are in the new year and the kingdom outside my window is hinting at spring's reliable return. But while the Ides are still days ahead on my calendar, they appear to have arrived early for too many of our fellow human beings, and the suffering of conflict has begun anew.

How will we write about food?

At The Counter, we believe that every story is in some way a food story. So, we will continue to connect the dots for you between what's happening in the world and the smaller, more intimate encounters we have with food every day. Those connections are everywhere, if you know where to look.

It's been our job since 2015 to point you in the right direction. But we're also eager for change. We're writing for a new world now, with different ideas and keener instincts, and we're also citizens of the world; working and striving in it, making hard choices, and learning as we go.

This year, you're likely to see some evidence of our evolution in the stories you find at The Counter. We'll be thinking as much about how we get information to new readers—and what their needs are—as we will about what that information should look like, sound like, and include. One thing you can be sure of: there's a place for you in that conversation.

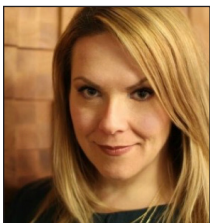
As the world continues to sort itself out and re-prioritize, we'll be here to help you make sense of the role that food plays in every part of the process.

We're in this together, dear reader.

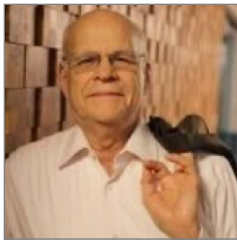
Kate Cox



Editor-in-chief



Staff Features



Jeffrey Kittay
Founder and publisher



Kate Cox
Editor



Joe Fassler
Deputy editor



Jesse Hirsch
Managing editor



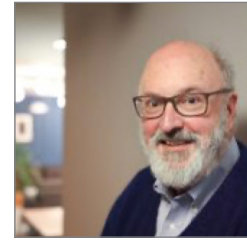
Mike Dang
Senior editor, enterprise
and strategic initiatives



Dr. Cynthia Greenlee
Senior editor



Karen Stabner
West Coast editor



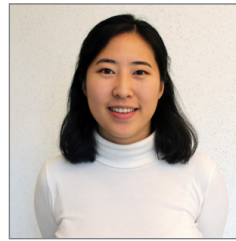
Patrick Clinton
Contributing editor



H. Claire Brown
Senior staff writer



Tina Vasquez
Senior staff writer



Jessica Fu
Staff writer



Talia Moore
Senior producer



Tricia Vuong
Senior producer



Safiya Charles
Reporting fellow,
future of farming



Matthew Sedacca
Reporting fellow,
Covid-19 recovery



Jessica Terrell
Reporting fellow,
Vision: Nourished Schools



Alex Hinton
Production assistant



Nate Pazik
Chief of operations
and development



Erika Scelfo
Development coordinator

Not pictured:

Sofia Sokolove
Audience engagement editor

Patricia Escarcega
Reporting fellow,
Covid-19 recovery

Mike Speziale
Chief revenue officer

Editorial Highlights/Year in Review

Our 10 most-read stories in 2021 include pieces that uncover different ways our food system obscures inequities, profit-mongering, and criminal enterprises. And as the pandemic continued to shine a light on the plight of workers everywhere, stories that gave voice to the people who produce, make, serve, and deliver our food resonated most with readers.

1. Lab-grown meat is supposed to be inevitable. The science tells a different story.

By Joe Fassler | September 2021



Cristina Estanislao

2. I make gluten-free snacks. It took a Black man dying for people to try my crackers.

By Jovani Prince + Shirah Dedman | January 2021

3. Slimy, smuggled, and worth top dollar: Can one Maine entrepreneur break into the crime-ridden global market for eel?

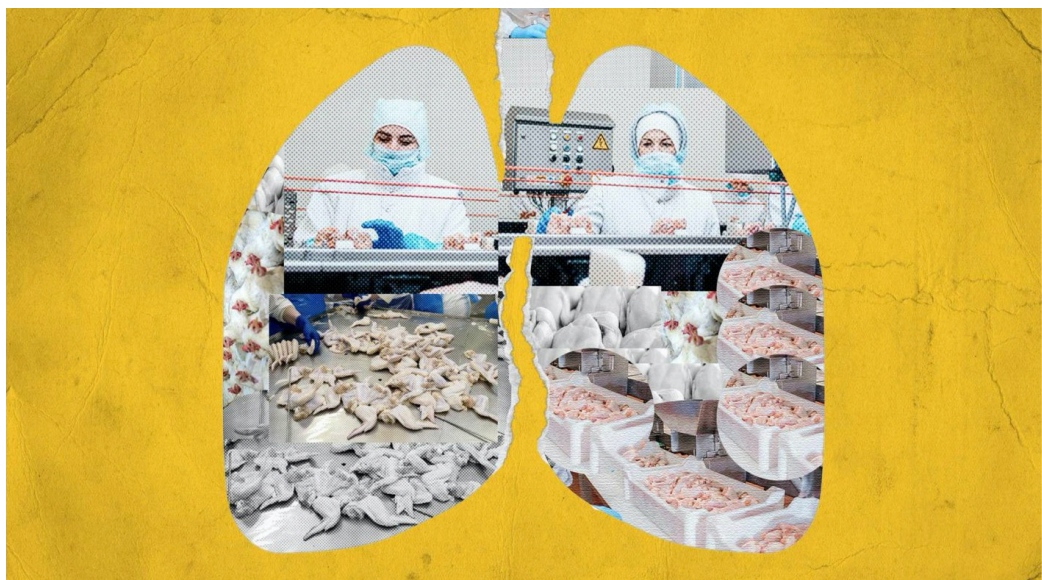
By Karen Pinchin | March 2021

4. In North Carolina, poultry works are quitting in large numbers after an unknown chemical was introduced at their plant

By Tina Vasquez | October 2021

5. Freedom food: Incarcerated no more, Michael Thompson finds joy in meals

By Tana Ganeva | February 2021



Graphic by Alex Hinton/iStock



6. I opened a wine store in NYC, right before the pandemic started. My entire business has been defined by Covid

By Tewelde Debessay + Jesse Hirsch | March 2021

7. Restaurant workers across North Carolina say there's no labor shortage. It's a 'wage shortage'.

By Tina Vasquez | July 2021

8. How corporations buy-and sell-food made with prison labor

By H. Claire Brown | May 2021

9. Delivery Apps like Grubhub and DoorDash charge restaurants huge commission fees. Are delivery co-ops the solution?

By Vivienne Machi | June 2021

10. Regenerative agriculture needs a reckoning

By Joe Fassler | May 2021



Erre Gálvez



Cornelia Li

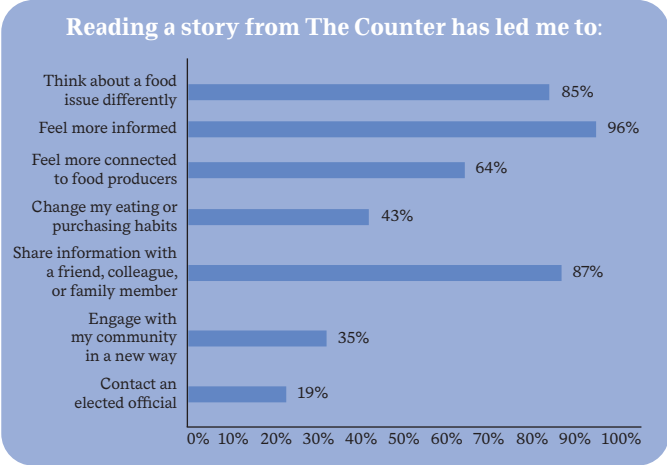
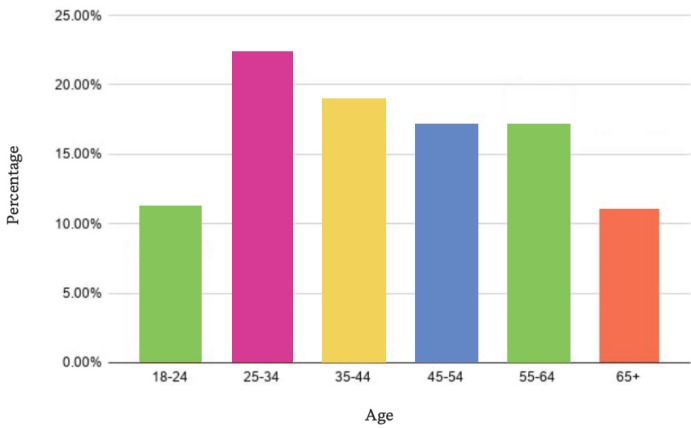
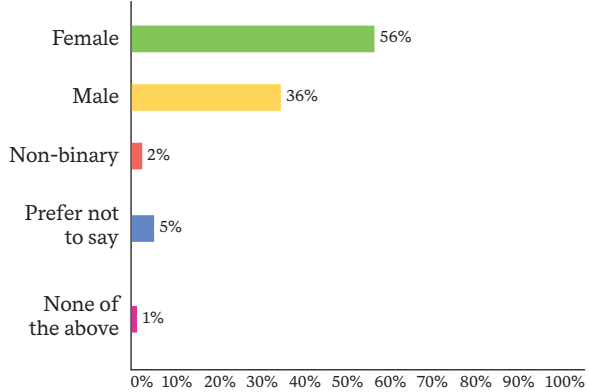
Audience and Reach

- **517,777** annual pageviews*
- **25,800** Twitter followers
- **359,162** pageviews per month on average
- **20,000** Facebook likes
- **31,000** Email subscribers
- **8,400** Instagram followers
- **678** Members

*Pulled from Google analytics + Apple News

Over 80 percent of our readers have a higher education degree. More than half of them hold advanced degrees, including 10 percent who hold doctorates.*

*According to a 2021 audience survey



What's Ahead for 2022

Future of Farming

The Counter's Future of Farming project, a reporting fellowship we launched in 2021 with support from the W.K. Kellogg Foundation, will continue to explore the roles that racism and injustice have played in shaping the U.S. agriculture system. We're talking to a new generation of leaders who are seeding food sovereignty for the future, and we will continue to chronicle the politics of redress for Black farmers.

Vision: Nourished Schools

The Counter's Vision: Nourished Schools reporting project launched in 2021 with support from the W.K. Kellogg Foundation. It will chronicle in a 2022 podcast the evolution of school food reform—from coronavirus crisis to the politics of universal meals. We expect to launch in November.

Coming Up

In March, West Coast editor Karen Stabiner will dive deep into the reasons why aid may not be what America's restaurant sector really needs now.

Future of Farming reporter Safiya Charles examines the state of mental health for Black farmers.

Contributing writer Lela Nargi goes all in on the real barriers to converting commodity farmland into regenerative agriculture enterprises.

We'll run a micro-series on the infant formula industrial complex. This reporting will uncover the unseen system of purchasing by the Women, Infants, and Children (WIC) Program, which buys about half the formula sold in the U.S.—and the impact it has on the formula market and on families.

This summer, our editing team will launch a crowd-sourced reporting project that looks at the psychology of wallet boycotts and the complicated calculus of protesting with your dollars.



Graphic by Alex Hinton/Photos by Talia Moore and Tricia Vuong

Financial Information/Fiscal 2021

REVENUES

The New Food Economy Inc. (DBA The Counter) Statements of Financial Position September 30, 2021 and 2020

| <u>Assets</u> | | |
|---|--------------------|--------------------|
| | <u>2021</u> | <u>2020</u> |
| Cash | \$818,103 | \$455,483 |
| Contributions receivable, net | 4,140,325 | 5,985,421 |
| Other current assets | 9,918 | 18,875 |
| Property and equipment, net | 65,551 | 50,090 |
| Total Assets | \$5,033,897 | \$6,509,869 |
| <u>Liabilities and Net Assets</u> | | |
| Liabilities: | | |
| Accounts payable and accrued expenses | \$23,408 | \$47,891 |
| Payroll Protection Program loan payable | - | 181,500 |
| Total liabilities | 23,408 | 229,391 |
| Commitments and contingencies (Notes 8 and 9) | | |
| Net assets: | | |
| Without donor restrictions | 2,510,489 | 2,205,478 |
| With donor restrictions | 2,500,000 | 4,075,000 |
| Total net assets | 5,010,489 | 6,280,478 |
| Total Liabilities and Net Assets | \$5,033,897 | \$6,509,869 |

During the 2020 fiscal year, the World Health Organization declared Covid-19 to constitute a “Public Health Emergency of International Concern.” Disruptions to the The Counter’s operations have occurred as a result of quarantines and pivot to remote working of all organizational staff, restrictions on in-person events, and significant impacts on in-person reporting, across the United States. Additionally, donors, members and other constituents have continued to be impacted by the pandemic. Through PPP loans, continued major donor support for operation funding and significant grant revenue, the Organization was able to continue to meet its charitable purposes without any disruption. No adjustments or provisions were made in the financial statements related to Covid-19.

After incorporating as a nonprofit, we built a fundraising strategy focused on growing revenue through four key initiatives: foundations, board support, major gifts and reader donations. We have invested significant resources and time in our fundraising strategies in 2021 including new hires. Fundraising increased 187% over the past fiscal year.

- **Board Support:** Primary funding comes from our Board of Directors, which provides annual operating support throughout the course of the year. One of our Directors provided primary operating funds through a multi-year pledge and our members of the Board continue to support our operation in several aspects throughout the year.
- **Major gifts/foundations:** We continue to build relationships with foundations in both the media and food/agriculture spaces. In fiscal 2021, we are funded by: The Chicago Community Foundation, The W.K. Kellogg Foundation, The Eli & Edythe Broad Foundation, The Marcus Foundation, The Greater Kansas City Foundation, The Fund for Nonprofit News at The Miami Foundation, and The Emma Bowen Foundation.

- **Reader support:** Our community of readers supports The Counter with gifts of various sizes, and we've placed a special emphasis on developing relationships with readers who make recurring donation commitments. In this aspect of our fundraising, we continue work with News Revenue Hub, which provides a user-friendly donor dashboard and runs the annual NewsMatch fundraising campaign, during which funds are matched dollar for dollar by Foundation commitments.

Looking forward to 2022, we are planning to expand our fundraising with foundations and to develop a major gift program that focuses on internal and external donors who will support the general operations of the organization. We believe that through further development in our fundraising team, we will be able to move forward with a further strengthened philanthropic program that will sustain 25 percent of the general operating budget by 2024 and help us focus on long-term sustainability past our Board of Directors primary funding.

Functional Expense

The New Food Economy Inc. (DBA The Counter) Statement of Functional Expenses for the year ended September 30, 2021

| | Program Services | Management and General | Fundraising | Total |
|--|---------------------|---------------------------|------------------|--------------------|
| Salaries and wages | \$1,114,225 | \$438,063 | \$92,047 | \$1,644,365 |
| Payroll taxes and other employee benefits | 108,754 | 42,755 | 8,984 | 160,493 |
| Editorial expenses | 147,107 | 10,988 | - | 158,095 |
| Office and administration | 39,885 | 37,293 | - | 77,178 |
| Professional fees | - | 86,839 | 31,463 | 118,302 |
| Occupancy and utilities | 25,722 | 10,112 | 2,125 | 37,959 |
| Insurance | 57,582 | 22,735 | 4,749 | 85,066 |
| Depreciation and amortization | - | 23,800 | - | 23,800 |
| Other expenses | 700 | 17,340 | - | 18,040 |
| Registration fees | - | 1,371 | - | 1,371 |
| Travel | - | 6,121 | - | 6,121 |
| Total functional expenses | \$1,494,005 | \$697,417 | \$139,368 | \$2,330,790 |

Continuing our role as good stewards of donor funds, we have made significant cost savings while investing in our editorial team. In 2021, we prioritized and continue to maximize efficiencies in operational costs—specifically overhead—by becoming a fully remote newsroom, which eliminated the enormous cost of maintaining office space in New York City. We have also contracted qualified third parties for our accounting, human resources, insurance services, benefit packages, and technology support through a bidding process overseen by our Board. While we maintained minimal costs in operating expenses, we invested heavily in our editorial leadership, bringing on two new senior editors, hiring an experienced editor focused on audience development and offered four year long fellowships to talented reporters through significant funding from two major foundations.

While we continue to strive for capacity on both sides of our organization, the attached statement of functional expense demonstrates that our development and operational costs are on par—and often come in under—those of our peer organizations in similar lifecycles, while our operating budget focuses more significantly on the editorial growth.

As we move into 2022, it is our strong goal to further build capacity on the editorial side and to strengthen the organization with strategic hires that are focused on our long-term sustainability for our reporting.

Our Approach to Post-Pandemic Reporting

We continue to delve into the workings of the agriculture and food industries, as well as the perceptions around people who grow, pick, process, and sell our food.

This past year, the pandemic and call for social justice reform on our streets has been a catalyst for furthering our investigative work and re-enforcing our core organizational strengths and beliefs in providing a just and more equitable food system. When we started the year, our newsroom had a packed calendar of events, meetings and editorial travel to all parts of the country. By March, our team was fully remote and we were strategizing our focus to the critical impact that Covid-19 was having throughout the food system.

A true testament of the quality of our news can be found in the award-winning journalism we put out throughout the pandemic. With respect to the pandemic, we launched our *Eating In Series* and *The Shutdown Notebook*. The former covered the pandemic's daily effect on our individual interactions with food, the latter was a weekly account of one restaurateur's struggle to keep his restaurants open throughout.



Olivia Fields for The Counter's Member Newsletter

Supporters

In 2020, Philanthropist and Director, S. Donald Sussman provided a long-term multi-million dollar pledge to the organization.

Foundations

Greater Kansas Community Foundation
Local Media Foundation
The Chicago Community Foundation
The Eli and Edythe Broad Foundation
The Emma Bowen Foundation

The Fund for Nonprofit News at The Miami Foundation
The Marcus Foundation
Tim and Gwen Wurst Family Foundation
W.K. Kellogg Foundation

Individual Giving

\$25,000 and Below

Jeffrey Kittay
Gregory Muth
Douglas Phillips
Bonnie Porta

Margot Fassler
Andrea Folds
William Marcus
Ann Okerson
Ian Petrie
Elizabeth Prince
Kim Richman
Harley Seligman
S. Spodek
Allison Thomas
Tammera Wells

Lisa Bernard
Vivek Bhagwat
Charlotte Biltekoff
Gary Borer
Haven Bourque
Jamie Bowers
Teresa Briggs
Susan Brison
Joan Brucha
Louisa Burwood-Taylor
Marc Bushell
Rhonda Caldewey

Nicola Deasy
Sarah Ditton
Mary Dooley
Amy Draut
Steven Dunn
Kathleen Eckler
Kevin Edmonds
Robert Eiser
Helen Elkins
Fred Epstein
Rob Eshman
Christopher Fagnant

\$1,000 and Below

Ann Brown
Margot Kelley
Marc Kramer
Corby Kummer
Joan Powell
Gretchen Wetzel

\$100 - \$249

Sarah Neider
Elizabeth Adams-Smith
Sohrab Andaz
Evan Anderman
Molly Anderson
Paul Appelbaum
Alison Arnett
Sharon Badian
Samantha Baiz
Solomon Barnett
Wendy Bazil
Michael Beall
Joan Beeson
Mitra Behrooz
Carlos Bernal

Mike Callicrate
Pat Castaldo
Stephen Cerny
Elizabeth Chandler
Naeemah Chike
Anastasia Christman
Janet I Clark
Daniel Colarusso
Jeff Cole
Allison Connell
Anne Conness
Ensign Cowell
Jack Cox
Megan Cronin
Kristi Crookham
Joan Daly
Cathy Davies

Anthony Fagnant
Lynn Fantom
Julie Finkel
Susan Fix
Jason Flatt
Jon Fogarty
Mark Gale
Lorraine Garkovich
Patricia Garrett
Theodore Gioia
Andrew Gold
George Goldstein
Robert Gonzalez
Sarah Graddy
Jan Greenberg
Lin Griffith
Audrey Groce

\$500 - \$999

Corinna Baban
Myron Beasley
Caroline Culver
Karen Karp
Jerold Mande
Stacy Molander
Marcie Rothman

\$250 - \$499

Amy Brown
Sarah Brunnig

Linsey Herman
Christophe Hille
Christopher Hirsch
Doug Hiza
Whitney Horn
Mark Huisenga
Sarah Hunt
Hannah Ingber
Devin Jacob
Jennifer Jarvis
Kathryn Jarvis
Elizabeth Johnsen
Alice Julier
Sunwoo Kahng
Emily Kaufman
Susan Keller
Ronald Kint
Randall Kirkpatrick
Evan Kleiman
Jim Kleinschmit
Barbara Knecht
Amy Kull
Daniel Kuruna
Toni Liquori
Dan Liu
James Lugg
Riana Lynn
Vivienne Machi
Kim MacQueen
Lawrence Madison
Joshua Mailman
Brian Matheson
Christine Matthews
JoAnn McArthur
Robert McClendon
Laura McClusky
Elizabeth McKibben
Kathleen Merrigan
Mary Middleton
Mary Beth Miller
Ben Miller
David Miner
Malini Moraghan
Xenia Morin
Marion Nestle
Sharon Nielson
Bu Nygrens
Dan O'Dea

Anjali Oberoi
George Ohrstrom II
B. Onsberg
Barbara Osborne
Ben Palen
Tyler Parke
George Pasley
Samrat Patel
Emily Payne
Betsy Perna
Zainab Pixler
Ellen Polishuk
Charlotte Pradie
Justin Rashid
Ashlee Redfern
Ashley Reece
Tom Rogan
Brian Rohter
David Romm
Marni Rosen
Amy Rosenthal
Michael Rozyne
Christine Ryan
Christine Ryan
Scott Samuelson
Nancy Saretsky
James Savage
James Shanley
Laura Shapiro
Anne Sholar
Cynthia Siegel
Michele Simon
Andrew Smith
Dana Smith
Brittany Solano
Sarah Spira
Ken Steinglass
Ricky Stephens
Yvonne Stolworthy
May Lynn Tan
Linden Thaayer
Laura Thacker
Paul Thomas
Susan Thompson
Kaitlyn Tierney
Christine Tkac
Louise Ungerth
Sarah Vaile

John Vena
Ann M. Veneman
Nancy Vermès
Sarah Vradenburg
Gwen Walters
Geraldine Wang
Jacob Ward
Solomon Watson
Todd Weiser
Michael Whiteman
Marcia Wiesner
Betti Wiggins
Margot Wilhelm
Christine Willette
Roger Williams
Patricia Williams
Nan Wilson
Meryl Winicov
Jim Wright
Kristin Zellhart

Other

Joel Abrams
Jan Abundo
Polly Adema
Michael Adsit
Elizabeth Alexander
Christine Almeida
Lorrie Amitrano
Jeanine Anderson
Jacqueline Andrews
Jennifer Antos
Gordon Arbuckle
Kirsten Archer
Susan Aronoff
Claude Arpels
Matt Aumann
Nazım Gediz
Aydindoğmuş
Petra Barran
Adrienne Moore Baxter
Lawrence Belling
Nadia Berenstein
Marc Bergeron
James Berman
Virginia Berry
Herman Bigham

Elisa Bildner
Diane Binnings
Thomas Blake
Nicholas Blawat
Erika Block
Edward Boissevain
Dana Boldt
Kit Sang Boos
Steven Boss
Sari Botton
Florence Bouchard
Santerre
Connie Bowen
Angelica Braestrup
Emily Breen
Thomas Brennan
Kelsey Bright
Molly Brignall
Kristina Brousalis
Corie Brown
Heidi Brugger
Mary Buchanan
Robert Burnham
Jennifer Burns
Meredith Burton
John Busch
Elizabeth Calvin
Michael Campbell
Lynn Canaan
Colin Cannell
Cara Cannon
Anne Carey
Stephen Carlton
Fran Carpentier
Scott Carrigan
George Carver
Edward Case
Laura Bon Cash
Tina Castanares
Claudio Castro
Cynthia Cheney
Zhuo Chen
Lance Cheung
Michael Chimes
Barbara Ching
Richard Chlopan
Elizabeth Chlystek
Amy Christian

| | | | |
|---------------------------|--------------------------|-------------------------|--------------------|
| Karen Cohen | Ralph Faust | Elizabeth Hanlon | Janet Katz |
| Midwest Food Connection | Kali Feiereisel | Leighton Hansel | Colby Kavanagh |
| Katherine Conrad | Vitina Feo | Flaam Hardy | Susan Kawashima |
| Kim Cooper | Chad Ferris | Yusuf Harper | Madeline Keating |
| Melanie Copple | Martin Fiennes | Jay Harris | Jennifer Keenan |
| Brian Coppom | Zoe Finch Totten | Jay Harris | Kathy Kelehan |
| Owen Cortner | Jameson Fink | Sheila Walker Hartwell | Barbara Kemp |
| John M. Côté | Karen Fischbach | Joel Hastings | Kirby Kersels |
| Margot Critchfield | Brendan Flannelly-King | SE Hausmann | Richard Kerzner |
| Mihaly Csoto | Cornelia Flora | Dr. Sarah Haynes | Lynn Kettleon |
| William Cutler | Terry Franzman | Samantha Heller | Ernest Kim |
| Laura Dalrymple | Annabel Fraser | Joyce Hendley | Rosy King |
| Rachel Dana | Erin Fredericks | Steve Hess | Jonathan Kingsman |
| Colleen Daniel | David Freedman | Randall Hilton | Jerusha Klemperer |
| Teresa Davenport | Andrew Free | Andreina Himy | Richard Knutson |
| Jonathan Davie | Susanne Freidberg | Susan Hinckley-Porter | Marjorie Korn |
| Devita Davison | Kyle Freund | Kim Hines | Monika Kosior |
| Linda Dean | Cherryl Friedman | Susan Hirsch | Michael Kostyo |
| Nicole de Jesus | Sara Fulton-Koerbling | Jesse Hirsch | Will Kottcamp |
| Lynne Della Pelle Pascale | Desseret Funderburk | Channon Hodge | Bonnie Krauskoff |
| Ruth Denton-Howes | Todd Fuson | Sally Hodgkinson | Prasad Krishnan |
| A. Dexter | Susan Futrell | Susan Holmberg | Kevin Krueger |
| David Dietz | Annika Gacnik | Janet Horner | Jess Kung |
| Ann Dillemoth | Marilyn Gallegos | Amy O'Neill Houck | Linda Lake |
| Rada Dogandjieva | A. Ganier | Warren Howell | Michael Lamont |
| Radoslava Dogandjieva | Samantha Garwin | Joshua Hoyt | Jeffrey Landau |
| Nancy Dollarhide | Jeffrey Geisbauer | Teresa Hrubala | Erica Largent |
| Diane Dorfer | Robert Gellman | Ronald Huber | Richard Laub |
| Patrick Downer | Pam Giacomini | Patrick Huffcutt | Lisa Laurents |
| Megan Draheim | Beverly Gilbert | Jean Ihrig | Bonnie Lawlor |
| Brenden Dufault | Scott Gilman | Valerie Jacklin | David Laycock |
| Elizabeth Dulley | Louis Giordano | Soroush Jamali Pour | Harrington Ledesma |
| Alex Duncan | Miles Glover | Sarah James | Aaron Lee |
| Walter Duran | Debra Goldman | Molly Jenkins | Mathew Lee |
| Sean Durkin | Clare Gordon Bettencourt | Sonja Jensen | Danielle Leoeni |
| Kate Duxler | Eleanor and Gary Gossen | McAllister Jimbo | Eric Levin |
| Marcy Easton | Walter Graeber | Shelley Johnson | Sam Levy |
| Andrea Eaves | Anne Gragtmans | Michelle Johnson-Weider | Jeanne Levy |
| Leslie Engel | Debora Gray | Katie Johnston | Andrea Levy |
| Stephen Erickson | Elizabeth Green | Hugh Joseph | Leslie Liszak |
| Ysabel Escarcega | Forest Grey | Martin-Straw Judith | Joshua Lubarr |
| Tamika Evans | Maggie Grey | William Kadish | Christopher Lu |
| Katherine Everts | David Gurian-Peck | Deborah Kahkejian | James P. Lynch |
| Nancy Fabrizi-Miller | Joan Gussow | Jennifer Kahrl | Michael MacHarg |
| Kevin Falcone | John Hachey | Judy Kales | Laura Mack |
| David Faucett | Irene Hamburger | Adriana Kalsekar | Janet Manguson |
| Tim Faulkner | Laura Hamburg | Louisa Kasdon | Eric Mankin |
| | David Hankin | Allan Katz | Scott Mansfield |

| | | | |
|-------------------------|-------------------------|------------------------|------------------------|
| Scott Mansfield | Carissa Owen | Eloise Saltzgaver | Nicole Thomas |
| Leslie Mark | Whitney Oxendahl | Nancy Saretsky | Sandra Thompson |
| Shanice Martin | Simone Parker | Gregg Saunders | Andrea Tolu |
| Julia Martin | SooHyen Park | Evelyn Savage | Antonio Tovar |
| Renee Marton | Ben Patten | Jeff Schahczenski | Debra Tropp |
| Chris Marx | Tara Pavis | John Scheineson | Bryan Tsunoda |
| Luke Mattheis | Louis Pechman | Naomi Scheman | Franklin VanVolkinburg |
| Selina Maxfield | Gary Pellett | Keith Schildt | Jeri Vargas |
| Zena Mayer | Linda Pell | Judith Schoeck | Gabriela Vega |
| Leslie Jean Mayer | Emily Penaranda | Estelle Scott | Esther Velasquez |
| Kevin McCaffrey | Hayley Penor | Brent Searle | Milo Vella |
| Richard McCarthy | Jana Pereau | Harish Sethu | Nicole Vitello |
| Meghan McCusker | Sandra Perez | Pearl Shavzin-Dremeaux | Martha Wagner |
| Miles McEvoy | Eileen Pewitt | Jean Shepard | Lance Wagner |
| Elizabeth McGarr McCue | Steven Picker | Madeline Sheridan | Renee Wanger |
| Wendy Lu McGill | Sue Pierce | Justin Sherrill | Reyna Wang |
| William McIntosh | Ryan Pinkston | Dana Shilling | Niki Ward |
| Jennifer McIntyre | Chris Piotrowski | Ashwini Sikri | Christina Ward |
| Samantha McKenna | Alexandra Pizarro-Grant | Dan Silverstein | Faith Washburn |
| Coralee McNee | Peter Polack | Carol Simmer | Linda Waters |
| Gilbert Mendelson | Nadja Popovich | Marsh Skeele | Megan Waters |
| Melody Meyer | Janet Poppendieck | Sasha Skon | Marcus Weaver- |
| Qing Qing Miao | Joseph Postman | Vicki Skydell | Hightower |
| Lola Milholland | Timothy Potts | Annie Smith | Sarah Weaver |
| Fred Miller | Alekya Prathivadi | Charles Smith | Jennifer Weeks |
| Morgan Minogue | Lucy Pulitzer | Florence Smith | Wendy Weiden |
| Daniel Mintz | Derrick Quandt | Carissa Smit | Andrew Whalen |
| Safeer Mirza | Tom Reed | Rob Snyder | Matt Wheeland |
| Robbi Mixon | Yonatan Reinberg | Nathan Solis | Jan Whitaker |
| Tamanna Mohapatra | Wolfgang Reiter | Janet Soto | Laurie White |
| Peter Molenaar | Rebecca Rene | Rebecca Spang | Ryan White |
| Eamon Molloy | Richard Riegler | Annette Spence | Richard White |
| Emma Moore | Pam Rife | Elise Springuel | David Whiteman |
| Davis Morgan | Jerome Rigot | Lori Stahlbrand | Orrin Williams |
| James Morgan | Alicia Rios | Paul Stainier | Jody Williams |
| Camille Morse Nicholson | Blaine Rittmer | Cathy Stanton | Tim Wilson |
| Maureen Moynihan | Jonathan Rosenthal | Alvin Steele | Karen Winkler |
| John Mullahy Mullahy | Dacotah Rousseau | Richard Stein | Joseph Witkowski |
| Dmitry Musatov | Mitchell Rubin | Casey Stelmach | Erin Wnorowski |
| Bernard Nadel | John Runnette | Margie Stelzer | Hayley Wood |
| Cullen Naumoff | Max Rünzel | Margie Stelzer | Renea Wood |
| Chuck Nelson | Gail Russell | Krista Stevens | Lynn Workman |
| Mary Newman | Charlotte Rutledge | Sarah Stock | Nancy Wright |
| Luis Nieves-Ruiz | Bethany Rydmark | Sheila Stratton | Rosemarie Wright |
| Cathy Nonas | Andres Saavedra | Patrick Surprenant | Marc Zaccaria |
| Elizabeth Nyburg | Rebecca Sadinsky | Lesley Sykes | Jane Zeff |
| Susan O'Donnell | Nancy Saffer | Rex Tayag | Phillip Zminda |
| Eseoghene Omatsone | Emily Saladino | Linden Thayer | Sarah Zoubek |

EIN: 84-1930625
270 Madison Avenue, 16th Floor, New York, NY 10016
thecounter.org