

# Accurate market price formation model with both supply-demand and trend-following for global food prices providing policy recommendations

Marco Lagi \*, Yavni Bar-Yam \* Karla Z. Bertrand \* Yaneer Bar-Yam \*

\*New England Complex Systems Institute, 238 Main St. Suite 319 Cambridge MA 02139, USA

Recent increases in basic food prices are severely affecting vulnerable populations worldwide. Proposed causes such as shortages of grain due to adverse weather, increasing meat consumption in China and India, conversion of corn to ethanol in the United States, and investor speculation on commodity markets lead to widely differing implications for policy. A lack of clarity about which factors are responsible reinforces policy inaction. Here, for the first time to our knowledge, we construct a dynamic model that quantitatively agrees with food prices. The results show that the dominant causes of price increases are investor speculation and ethanol conversion. Models that just treat supply and demand are not consistent with the actual price dynamics. The two sharp peaks in 2007/2008 and 2010/2011 are specifically due to investor speculation, whereas an underlying upward trend is due to increasing demand from ethanol conversion. The model includes investor trend following as well as shifting between commodities, equities, and bonds to take advantage of increased expected returns. Claims that speculators cannot influence grain prices are shown to be invalid by direct analysis of price-setting practices of granaries. Both causes of price increase, speculative investment and ethanol conversion, are promoted by recent regulatory changes/deregulation of the commodity markets, and policies promoting the conversion of corn to ethanol. Rapid action is needed to reduce the impacts of the price increases on global hunger.

Food Crisis, Social Unrest, Speculation, Non-Equilibrium Markets, Ethanol Conversion

## Significance Statement

Recent increases in food prices are linked to widespread hunger and social unrest. The causes of high food prices have been debated. Here we rule out explanations that are not consistent with the data and construct a dynamic model of food prices using two factors determined to have the largest impact: corn-to-ethanol conversion and investor speculation. We overcome limitations of equilibrium theories that are unable to quantify the impact of speculation by using a dynamic model of trend following. The model accurately fits the data. Ethanol conversion results in a smooth price increase, whereas speculation results in bubbles and crashes. These findings significantly inform the discussion about food prices and market equilibrium and have immediate policy implications.

## Introduction

In 2007 and early 2008 the prices of grain, including wheat, corn and rice, rose by over 100%, then fell back to prior levels by late 2008. A similar rapid increase occurred again in the fall of 2010. These dramatic price changes [1] have resulted in severe impacts on vulnerable populations worldwide and prompted analyses of their causes [2–57]. Among the causes discussed are (a) weather, particularly droughts in Australia, (b) increasing demand for meat in the developing world, especially in China and India, (c) biofuels, especially corn ethanol in the US and biodiesel in Europe, (d) speculation by investors seeking financial gain on the commodities markets, (e) currency exchange rates, and (f) linkage between oil and food prices. Many conceptual characterizations and qualita-

tive discussions of the causes suggest that multiple factors are important. However, quantitative analysis is necessary to determine which factors are actually important. While various efforts have been made, no analysis thus far has provided a direct description of the price dynamics. Here we provide a quantitative model of price dynamics demonstrating that only two factors are central: speculators and corn ethanol. We introduce and analyze a model of speculators describing bubbles and crashes. We further show that the increase in corn to ethanol conversion can account for the underlying price trends when we exclude speculative bubbles. A model combining both increasing ethanol conversion and speculators quantitatively matches food price dynamics. Our results imply that changes in regulations of commodity markets that eliminated restrictions on investments [58–62], and government support for ethanol production [63–66], have played a direct role in global food price increases.

The analysis of food price changes immediately encounters one of the central controversies of economics: whether prices are controlled by actual supply and demand, or are affected by speculators who can cause “artificial” bubbles and panics. Commodity futures markets were developed to reduce uncertainty by enabling pre-buying or selling at known contract prices. In recent years “index funds” that enable investors (speculators) to place bets on the increase of commodity prices across a range of commodities were made possible by market deregulation [58]. The question arises whether such investors, who do not receive delivery of the commodity, can affect market prices. One thread in the literature claims that speculators cannot affect prices [67,68]. Others affirm a role for speculators in prices [2–5, 11–17, 45–47, 59, 69, 70], but there has been no quantitative description of their effect. The rapid drop in prices in 2008, consistent with bubble/crash dynamics, increased the conviction that speculation is playing an important role. Still, previous analyses have been limited by an inability to directly model the role of speculators. This limitation has also been present in historical studies of commodity prices. For example, analysis of sharp commodity price increases in the 1970s [71] found that they could not be due to actual supply and demand. The discrepancy between actual prices and the expected price changes due to consumption and production was attributed to speculation, but no quantitative model was provided for its effects. More recently, statistical (Granger) causality tests were used to determine whether any part of the price increases in 2008 could be attributed to speculative activity [15, 72, 73]. The results found statistical support for a causal effect, but the magnitude of the effect cannot be estimated using this technique.

The controversy about commodity price dynamics parallels discussions of market dynamics more generally. Traditional economics assumes market prices are determined by events that affect fundamental value, i.e., news. The statistical properties of news then map onto price behaviors. A distinct approach considers the price dynamics as a result of market trader (agent) behaviors [74–83]. Diverse assumptions, espe-

cially about trader strategies that change over time, lead to intrinsic market price dynamical behaviors, which are distinct from the traditional assumptions about news behavior. Models of the role of information delays in the beef commodity market have also been motivated by considering heterogeneous agents [84, 85].

Here we construct a behavioral model guided by the concepts of universality and renormalization group applied to dynamical processes [86–88], which motivates including only lowest order (largest scale) terms. Since many traders are involved in market dynamics, renormalization group implies that observed behavior results only from “relevant” parameters, i.e. those external and internal factors that affect behavior at largest aggregate scales. This strategy is particularly pertinent to analysis of the large food price changes discussed here. In this approach the incremental change in price is given by:

$$P(t+1) - P(t) = -k_{sd}(P(t) - P_e(t)) + k_{sp}[P(t) - P(t-1)] + \sum_{i=1}^N k_i [P_i(t) - P_i(t-1)] \quad [1]$$

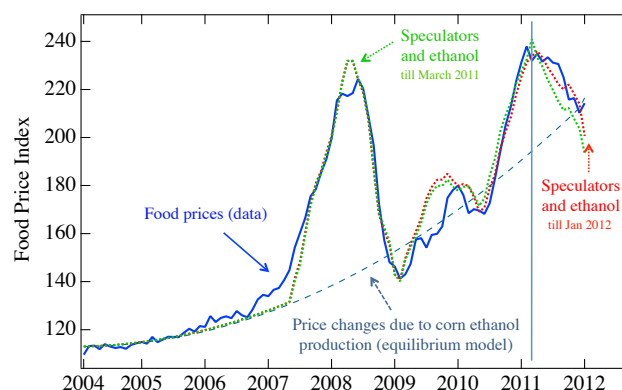
which is an expansion to first order in variables describing the system, and can be converted to a recursive iterative map by adding  $P(t)$  to both sides. While not constructed as an agent model, the individual terms can be interpreted as arising from agent behaviors. The first term can be identified with Walrasian buy-low sell-high investors with a fundamental price  $P_e(t)$ . The second term can be identified with trend following speculators, who buy when the price goes up and sell when the price goes down. The absence of any reference to a fundamental price in the second term is distinct from more typical agent models, though it follows from the construction of the model. The final sum incorporates the influence of traders switching to  $N$  other markets with prices  $P_i(t)$  indexed by  $i$ . This approach may be considered as a new way to bridge between traditional and agent based concepts. The first order approximation gives a dynamical version of the traditional equilibrium market, and is extended to include relevant terms that lead to intrinsic self-generated dynamical price behaviors.

Given Eq. 1 we (1) identify the characteristic behaviors of this model to build intuition about how it relates to price behavior, (2) identify the external factors that should be included in  $P_e$  for food prices, and (3) motivate economically the inclusion of trend following in commodity futures markets. Armed with the external factors, the ultimate objective is a validation of Eq. 1 by direct comparison with empirical data. The validation is reduced to a few parameter fit. We then address the important topic of inventory dynamics for out of equilibrium prices and infer policy implications. Given the multiple steps involved, we summarize the key findings here. We defer the building of mathematical intuition to the SI Appendix and use the Results section for the discussion of external factors, the motivation of including trend following, and validation tests. The topics of inventory dynamics and policy implications are in the Discussion section.

The behavior of the model can be understood as follows. The first term results in exponential convergence to equilibrium—if investors believe supply and demand do not match, there is a countering (Walrasian) force toward equilibrium prices. The incorporation of trend-following manifests in bubble and crash dynamics. When prices increase, trend following leads speculators to buy, contributing to further price increases. If prices decrease speculators sell, contributing to further price declines. The interplay of trend following and equilibrium restoring transactions leads to a variety of behaviors depending on their relative and absolute strengths. For

a sufficiently large speculator volume, trend following causes prices to depart significantly from equilibrium. Even so, as prices further depart from equilibrium the supply and demand restoring forces strengthen and eventually reverse the trend, which is then accelerated by the trend following back toward and even beyond the equilibrium price. The resulting oscillatory behavior, consisting of departures from equilibrium values and their restoration, matches the phenomenon of bubble and crash dynamics. The model clarifies that there are regimes in which traders have distinct effects on the market behavior, including both stabilizing and destabilizing the supply and demand equilibrium.

To apply Eq. 1 to food prices we systematically consider proposed factors that may contribute to  $P_e(t)$ . We provide quantitative evidence that justifies excluding all of those proposed from playing a major role in recent price changes except corn to ethanol conversion. We therefore use ethanol demand as the driver of equilibrium prices  $P_e(t)$ . In addition to trend following, we include market switching to equities (using the S&P500 Index time series) and bonds (using the US 10-year treasury note price time series) in the last term, so that  $N = 2$ . We fit the output of the entire model by adjusting four constants ( $k_{sd}$ ,  $k_{sp}$ ,  $k_{equity}$ ,  $k_{bonds}$ ) in Eq. 1, with the additional condition that the speculator term starts at the time of the fall of the mortgage market in early 2007. Results are shown in Fig. 1 for a fit till March 2011, an out of sample continuation till January 2012, and a fit till January 2012. The fits were originally performed contemporaneously with the data in 2011 and 2012 [89, 90]. We note that the out of sample data changes direction as does the theory without change of parameters. The results demonstrate remarkably good quantitative agreement. The model does not include stochastic variation, which could be included, e.g., in  $P_e(t)$ , but is not found to be needed—the time series is generated deterministically with only a few parameters, without additional parameters at every time step. Nevertheless, the corresponding statistical validation of both fits has  $p < 10^{-60}$ , and there is no difference between the statistical validation for the last 10 months of the out of sample continuation and the complete fit for that period; both have  $p < 0.001$ . Efforts to fit the data using



**Fig. 1. Food prices and model simulations** - The FAO Food Price Index (blue solid line) [1], the ethanol supply and demand model (blue dashed line), where dominant supply shocks are due to the conversion of corn to ethanol so that price changes are proportional to ethanol production and the results of the speculator and ethanol model (green and red dotted lines), that adds speculator trend following and switching among investment markets, including commodities, equities and bonds. The green curve is fit till March 2011 (vertical blue bar), the red curve is fit till Jan 2012. Thus the matching of the former to data after March 2011 is an out of sample fit. Green curve parameters:  $k_{sd} = 0.098$ ,  $k_{sp} = 1.29$ ,  $k_{equity} = -0.095$ ,  $k_{bonds} = -67.9$ . Red curve parameters:  $k_{sd} = 0.093$ ,  $k_{sp} = 1.27$ ,  $k_{equity} = -0.085$ ,  $k_{bonds} = -48.2$ .

either just a supply and demand model, or just a speculator model were not successful. The results are a validation of the approach of eliminating all but the most relevant external factors and internal behaviors.

Our results also provide a strong validation for the role of non-traditional behavioral agents in market dynamics. Systematically considering and including only the largest external factor provides evidence to counter the criticism that external factors might be identified that could account for behavioral results. Explicitly modeling external factors is generally difficult to do in most markets. We note other analyses often consider changing trader behavior leading to market statistical properties, our analysis is done in the limit of no change in the amounts of each type of trader, ( $k_{sd}$ ,  $k_{sp}$ ), once the speculative behavior starts in 2007. The variation of trader strategies does not appear to be relevant over this timeframe for this market at the largest scale.

Our results have direct implications for understanding the complex dependencies of global economics and the societal effects of food prices. The flows of capital in global markets can be traced from the financial crisis through our speculator model. Due to the collapse of the mortgage market and the stock market crash, investors moved money to the commodities market. This resulted in boom-bust cycles, including in food and other commodities. In a separate paper we describe the connection between food prices and the recent social unrest, violence and government changes in North Africa and the Middle East [91]. Our analysis extends the dominos of global interdependence from housing, to the stock market, to the commodities market, to social unrest. Policy discussions should recognize the extent of such links.

## Results

We divide our results into three parts: Considering and mostly excluding potential factors that might contribute to fundamental shifts of food prices, providing various economic motivations for inclusion of speculator investment in commodity markets, and validation tests of the quantitative model.

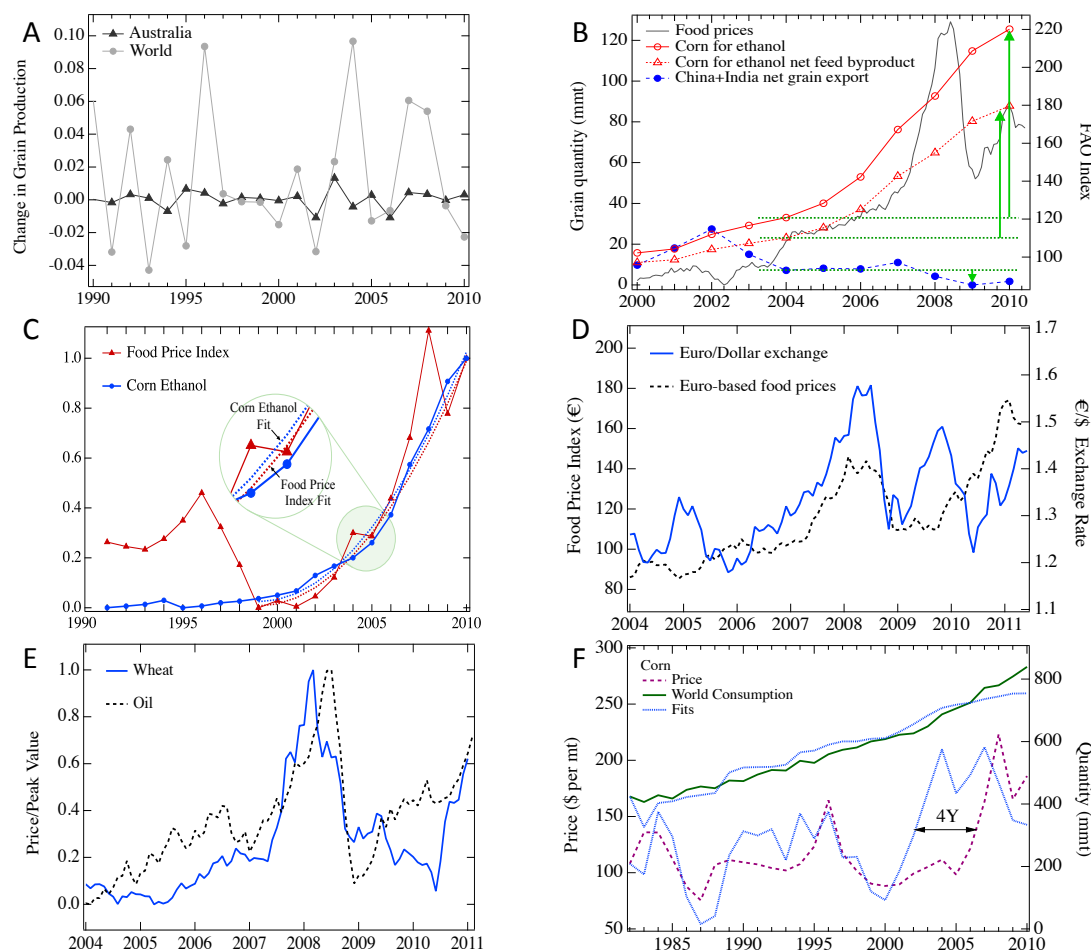
**Fundamental external factors.** Candidates for factors affecting fundamental value include weather, increasing consumption of meat and other livestock products in developing nations, the use of corn for ethanol production, changes in exchange rates, and energy costs.

*Weather* - The most common explanation provided by news interpreters for the 2008 food price increases was the drought in Australia [92–94]. However, the production of grains in Australia does not correlate with global production (Fig. 2 A). The Pearson correlation coefficient of the two time series over the last 20 years is only  $\rho = 0.17$ . Other countries have increases and decreases based upon variable conditions and therefore the changes in global production are not well described by Australia’s production. The fraction of global grain production from Australia (circa 1.8% by weight in 2010 [95]) is therefore not sufficient to be a significant causal factor at the magnitude of influence of recent price changes, even if it might be at smaller scales and shorter time frames. In particular, the low production in Australia in 2006 did not coincide with a global production decrease, and in 2007 both Australia and the world had increases in production (Fig. 2 A). Droughts in Australia, and global weather conditions more generally, are therefore unable to explain the recent food price changes.

*Diet* - A widely cited potential longer term cause of increasing prices is a change of diet from grains to meat and other livestock products, as a result of economic development [99,100]. Development of China, India, and other countries, compris-

ing more than one-third of the world population, has created higher food demands as the diet of these countries changes. Changes in diet might have a large impact on the consumption of feed grains, as the ratio of animal feed to meat energy content has been estimated to be as high as 4:1, 17:1 and 50:1 for chicken, pork and beef respectively [101]. However, the increasing demand for grain in China and India has been met by internal production and these countries have not, in recent years, been major participants in the global grain markets [95]. Indeed, demand growth in these countries slowed in the years leading up to the food price spike in 2008 [4,12], and the countries combined remained net exporters [12,22]. As shown in Fig. 2 B, their combined net international export of grains has decreased by 5 mmt, from 7 mmt in 2004 to 2 mmt in 2010 [95]. In contrast, the increase in the amount of corn used for ethanol production is 20 times larger, 95 mmt (if we subtract a feed byproduct of ethanol production [96] it is 13 times larger, 67 mmt). The increase in demand due to corn feed in China, for all purposes but primarily for hogs (the dominant source of meat), from 2004 to 2010 is 22 mmt, less than one-quarter of the ethanol demand (one third after feed byproduct). Even this amount was mostly met by internal production increases. Import and export policies isolate the Chinese domestic grain market and domestic prices of feed grains do not track global prices, so only the reduction of net export affects the global market. The impact on global food prices of changes in feed grain demand due to economic development is therefore negligible with respect to US demand for corn for ethanol.

*Ethanol* - Only a small fraction of the production of corn before 2000, corn ethanol consumed a remarkable 40% of US corn crops in 2011 [95], promoted by US government subsidies based upon the objective of energy independence [63–66], and advocacy by industry groups [66,102,103]. Corn serves a wide variety of purposes in the food supply system and therefore has impact across the food market [104–106]. Corn prices also affect the price of other crops due to substitutability at the consumer end and competition for land at the production end [2]. There have been multiple warnings of the impact of this conversion on global food prices and world hunger [107–115], and defensive statements on the part of industry advocates [116,117]. Among quantitative studies, ethanol conversion is most often considered to have been the largest factor in supply and demand models. Absent a model of speculators, ethanol conversion is sometimes considered the primary cause of price increases overall. However, ethanol conversion itself cannot describe the dynamics of prices because ethanol production has been increasing smoothly since 2004. Therefore, it cannot explain the sharp decline of prices in 2008. We show that ethanol can account for the smoothly rising prices once the high peaks are accounted for by speculation. Fig. 2 C compares annual corn ethanol production and food prices. During the period 1999–2010, ignoring the 2007–2008 peak, the two time series can be well fitted by the same quadratic growth (no linear term is needed). The quadratic coefficients are  $0.0083 \pm 0.0003$  for corn ethanol and  $0.0081 \pm 0.0003$  for food prices, which are the same within fitting uncertainty. The quality of the fits is outstanding, with  $R^2$  values of 0.986 and 0.989 respectively. The Pearson correlation coefficient of the food price and ethanol annual time series is  $\rho = 0.98$ . The parallel increase of the two time series since 2004 suggests that corn ethanol is likely to be responsible for the underlying increase in the cost of food during this period. The relationship between food prices and corn to ethanol conversion can be obtained by modeling the impact of corn ethanol production as a dominant shock to the agricultural system. According to this model, other supply and demand factors would leave the



**Fig. 2. Analysis of possible causes of food price increases** - *A*: Weather, specifically droughts in Australia. Comparison of change in world (grey) and Australian (black) grain production relative to total world production by weight [95]. The correlation is small. *B*: Changing diets in emerging countries, specifically meat consumption in China. Comparison of China and India net grain export (dashed blue) to the US corn ethanol conversion demand (solid red) and net demand after feed byproduct (dotted red) [96], and FAO food price index (solid black). Arrows show the maximum difference from their respective values in 2004. The impact of changes in China and India is much smaller. *C*: Ethanol production. US corn used for ethanol production (blue circles) and FAO Food Price Index (red triangles). Values are normalized from 0 to 1 (minimum to maximum) during the period 1990-2010. Dotted lines are best fits for quadratic growth, with coefficients of  $0.0083 \pm 0.0003$  and  $0.0081 \pm 0.0003$  respectively. The 2007/8 bubble was not included in the fit or normalization of prices [95]. *D*: Currency conversion. Euro-based FAO Food Price Index (dashed black), euro/dollar exchange (solid blue) [97]. Both have peaks at the same times as the food prices in dollars. However, food price increases in dollars should result from decreasing exchange rates. *E*: Oil prices. Wheat price (solid blue) and Brent crude oil price (dashed black). The peak in oil prices follows the peak in wheat prices and so does not cause it [98]. *F*: Supply and demand. Corn price (dashed purple) and global consumption (solid green) along with best fits of supply and demand model (blue) [95]. Price is not well described after 2000.

prices mostly unchanged. Prior to 1999 corn ethanol production and prices are not correlated because of the small amount of ethanol production. Price variation during that period must be due to other causes.

*Exchange rates* - Dollar to euro conversion rates are, at times, correlated to commodity prices [2, 118]. During these periods an increase in commodity prices coincides with an increase in euro value relative to the dollar. It has been suggested that the reason that food prices increased in dollars is because commodities might be priced primarily in euros, which would cause prices to rise in dollars. This has been challenged on a mechanistic level due to the dominance of dollars as a common currency around the world and the importance of the Chicago futures market (CBOE) [119]. However, more directly, such a causal explanation is not sufficient, since the prices of commodities in euros have peaks at the same times as those in dollars, as shown in Fig. 2 D. Since the US is a major grain exporter, a decline in the dollar would give rise to

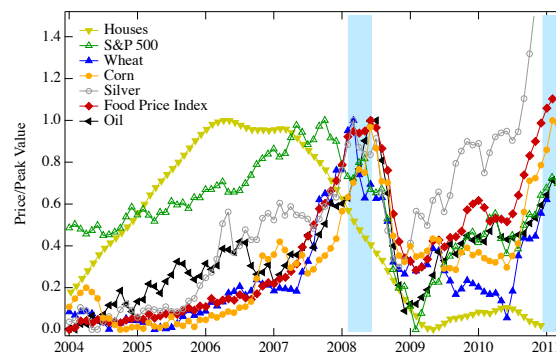
a decrease in global grain prices. (The effect is augmented by non-US grain exports that are tied to the dollar, and moderated by supply and demand corrections, but these effects leave the direction of price changes the same.) The opposite is observed. Moreover, the exchange rate also experienced a third peak in 2009, between the two food price peaks in 2008 and 2011. There is no food price peak either in euros or dollars in 2009. This suggests that the correlation between food prices and exchange rates is not fundamental but instead may result from similar causal factors.

*Energy costs* - Some researchers have suggested that increasing energy prices might have contributed to the food prices [5, 22, 108, 119]. This perspective is motivated by three observations: the similarity of oil price peaks to the food price peaks; the direct role of energy costs in food production and transportation; and the possibility that higher energy prices might increase demand for ethanol. Careful scrutiny, however, suggests that energy costs cannot account for food price changes. First, the peak of oil prices occurred *after* the peak in

wheat prices in 2008, as shown in Fig. 2 F. Second, US wheat farm operating costs, including direct energy costs and indirect energy costs in fertilizer, increased from \$1.78 per bushel in 2004 to \$3.04 per bushel in 2008 [120]. The increase of \$1.26, while substantial, does not account for the \$4.42 change in farmer sales price. More specifically, the cost of fertilizers was about 5% the total value of wheat (the value of the global fertilizer market was \$46 billion in 2007 [121], 15% of which was used for wheat [122]; the value of the global wheat market was \$125 billion [95,98]). Third, the demand from ethanol conversion (Fig. 2 D) has increased smoothly over this period and does not track the oil price (see Fig. 2 E and Fig. 3). The connection between oil prices and food prices is therefore not the primary cause of the increase in food prices. Indeed, the increased costs of energy for producers can be seen to be an additional effect of speculators on commodity prices. As shown in Figure 3, a large number of unrelated commodities, including silver and other metals, have a sharp peak in 2008. Given that some of the commodities displayed cannot be linked to each other by supply and demand consideration (i.e. they are not complements or substitutes, and do not have supply chain overlaps), the similarity in price behavior can be explained by the impact of speculators on all commodities. Metal and agricultural commodity prices behave similarly to the energy commodities with which they are indexed [123]. It might be supposed that the increased cost of energy should be considered responsible for a portion of the increase in food prices. However, since the increases in production cost are not as large as the increases in sales price, the increase in producer profits eliminate the necessity for cost pass-through. The impact of these cost increases would not be so much directly on prices, but rather would moderate the tendency of producers to increase production in view of the increased profits.

**Speculation.** The role of speculation in commodity prices has been considered for many years by highly regarded economists [70, 71]. There is a long history of speculative activity on commodity markets and regulations were developed to limit its effects [124–126]. Recently claims have been made that there is no possibility of speculator influence on commodity prices because investors in the futures market do not receive commodities [67, 68]. However, this claim is not supported by price setting practices of granaries, which set spot (cash) market prices according to the Chicago Board of Trade futures exchange, with standard or special increments to incorporate transportation costs, profits, and when circumstances warrant, slight changes for over- or under-supply at a particular time [127]. The conceptual temporal paradox of assigning current prices based upon futures is not considered a problem, and this makes sense because grains can be stored for extended periods.

If commodities futures investors determine their trading based upon supply and demand news, the use of the futures market to determine spot market prices, discounting storage costs, would be a self-consistent way of setting equilibrium prices [128–130]. But if investors are ineffective in considering news or are not motivated by supply and demand considerations, deviations from equilibrium and speculative bubbles are possible. When prices depart from equilibrium, accumulation or depletion of inventories may result in an equilibrium restoring force. This impact is, however, delayed by market mechanisms. Since producers and consumers generally hedge their sales and purchases through the futures market, transactions at a particular date may immediately impact food prices and decisions to sell and buy, but impact delivery of grains at a later time when contracts mature. The primary finan-



**Fig. 3. Time dependence of different investment markets** - Markets that experienced rapid declines, “the bursting of a bubble,” between 2004 and 2011. Houses (yellow) [135], stocks (green) [136], agricultural products (wheat in blue, corn in orange) [95], silver (grey) [98], food (red) [1] and oil (black) [98]. Vertical bands correspond to periods of food riots and the major social protests called the “Arab Spring” [91]. Values are normalized from 0 to 1, minimum and maximum values respectively, during the period up to 2010.

cial consequences of a deviation of prices from equilibrium do not lead to equilibrium-restoring forces. Producers, consumers and speculators each have gains and losses relative to the equilibrium price, depending on the timing of their transactions, but the equilibrium price is not identified by the market. Profits (losses) are made by speculators who own futures contracts as long as futures prices are increasing (decreasing), and by producers as long as the prices are above (below) equilibrium. When prices are above equilibrium consumers incur higher costs which may reduce demand. Producers may increase production due to higher expected sales prices. The result of this reduction and increase is an expected increase in inventories when futures contracts mature after a time delay of six to twelve months, an agricultural or financial planning cycle. Finally, the feedback between increased inventories and price corrections requires investors to change their purchases. First the information about increased inventories must become available. Even with information about increasing inventories, the existence of high futures prices can be interpreted as a signal of increased future demand, further delaying market equilibration. Speculatively driven bubbles can thus be expected to have a natural duration of a year or longer (see Fig. 3). (We note that it is possible to relate trend following speculators to the “supply of storage” concept in which current inventories increase due to higher expected future prices [131, 132]. However, in doing so we encounter paradoxes of recursive logic, see SI Appendix for more details).

We review the empirical evidence for the role of speculation in food prices, which includes the timing of the food price spikes relative to the global financial crisis, the synchrony of food price spikes with other commodities that do not share supply and demand factors, the existence of large upwards and downwards movement of prices consistent with the expectations of a bubble and bust cycle, statistical causality analysis of food prices increasing with commodity speculator activity, and an inability to account for the dynamics of prices with supply and demand equations despite many economic analyses. We add to these an explicit model of speculator dynamics which quantitatively fits the price dynamics.

The mechanisms of speculator-driven food price increases can be understood from an analysis of the global consequences of the financial crisis. This analysis connects the bursting of the US real estate market bubble and the financial crisis of 2007-2008 to the global food price increases [133, 134]. Figure

3 shows the behavior of the mortgage market (housing prices), stock market (S&P 500), and several commodities: wheat, corn, silver, oil, and the FAO food price index. The increase in food prices coincided with the financial crisis and followed the decline of the housing and stock markets. An economic crisis would be expected to result in a decrease in commodity prices due to a drop in demand from lower overall economic activity. The observed counterintuitive increase in commodity prices can be understood from the behavior expected of investors in the aftermath of the collapse of the mortgage and stock markets: shifting assets to alternative investments, particularly the commodity futures market [137–139]. This creates a context for intermittent bubbles, where the prices increase due to the artificial demand of investment, and then crash due to their inconsistency with actual supply and demand, only to be followed by another increase at the next upward fluctuation. The absence of learning behavior can be explained either by the “greater fool theory,” whereby professionals assume they can move their assets before the crash and leave losses to less skilled investors, or by the hypothesis that traders are active for just one price cycle, and that the next cycle will see new traders in the market. Even without a quantitative analysis, it is common to attribute rapid drops in prices to bubble and crash dynamics because the rapid upwards and downward movements are difficult to reconcile with normal fundamental supply and demand factors [2, 140, 141].

In addition to the timing of the peak in food prices after the stock market crash, the coincidence of peaks in unrelated commodities including food, precious and base metals, and oil indicates that speculation played a major role in the overall increase [142]. An explanation of the food price peaks in 2008 and 2011 based upon supply and demand must not only include an explanation of the rise in prices of multiple grains, including wheat, corn and rice, but must separately account for the rise in silver, oil and other prices. In contrast, speculator-driven commodity bubbles would coincide after the financial crisis because of the synchronous movement of capital from the housing and stock markets to the commodity markets. Moreover, the current dominant form of speculator investment in commodity markets is in index funds [69], which do not differentiate the behavior of different commodities, as they aggregate bets on the overall commodity market price behavior. Such investor activity acts in the same direction across all commodities, without regard to their distinct supply and demand conditions. The relative extent to which each type of commodity is affected depends on the weighting factors of their representation in index fund investing activity compared to the inherent supply and demand related market activity.

Recently, the growth of commodity investment activity has been studied in relation to commodity prices [2, 15, 70, 72]. Since index fund investments are almost exclusively bets on price increases (i.e. “long” rather than “short” investments), the investment activity is an indication of pressure for price increases. Increases in measures of investment have been found to precede the increases in prices in a time series (Granger) causality analysis [15, 72]. (An OECD study claiming that speculation played no role [143, 144], has been discounted due to invalid statistical methods [123].) Granger causality tests also show the influence of futures prices on spot market prices [73]. The causality analysis results provide statistical evidence of a role of speculative activity in commodity prices. However, they do not provide quantitative estimates of the magnitude of the influence.

For many analyses, the absence of a manifest change in supply and demand that can account for the large changes in prices is considered strong evidence of the role of speculators.

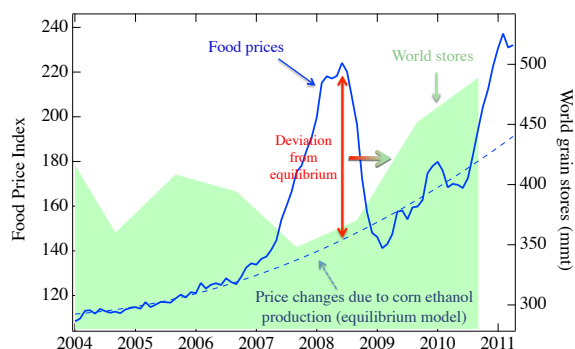
As we described in the previous section, supply and demand analyses of grain prices do not account for the observed dynamics of price behavior. None of the causes considered, individually or in combination, have been found to be sufficient. The SI Appendix Section A reviews multiple efforts which have not been able to fit the changes in food prices to fundamental causes. SI Appendix, Fig. 1, shows explicit quantitative supply and demand models do not match prices for corn, wheat and rice. As with analyses of commodity price changes in relation to supply and demand in the 1970s, such an absence is evidence of the role of speculators [71].

**Validation tests.** We constructed a model of price dynamics including fundamental causes and speculator trend following (Eq. 1, see the Introduction and SI Appendix for more details). Trend following results in an increase in investment when prices are rising, and a decrease when prices are declining. Our results describe bubble and crash dynamics when certain relationships hold between the amount of speculative investment activity and the elasticity of supply and demand. The resulting price oscillations can be modified by investors switching between markets to seek the largest investment gains. When we include trend following, market switching behaviors, and the supply and demand changes *only* for corn to ethanol conversion, the results, shown in Fig. 1, provide a remarkably good fit of the food price dynamics. We find the timescale of speculative bubbles to be 11.8 months, consistent with annual financial planning cycles and the maturation of futures contracts for delivery. While there have been no such direct models that match observed price dynamics, trend following has been analyzed theoretically as a mechanism that can undermine fundamental price equilibrium [145, 146], and is a central component of actual investing: advisors to commodity investors provide trend-following software and market investment advice based upon “technical analysis” of time series [147]. Such market investment advice does not consider weather or other fundamental causes. Instead it evaluates trends of market prices and their prediction using time series pattern analysis. Trend following is also at the core of agent based market models [74–83].

We performed additional tests to see if models could be fitted to the data that include either just speculation or just supply and demand, alternative null hypotheses.

We tested the possibility of a speculator model without external supply and demand factors. We find that without ethanol demand the speculative oscillations are unable to fit the dynamics of food prices for any value of the parameters (see SI Appendix, Section F).

Although ethanol alone cannot account for the peaks (Fig. 2 C), we considered if discrepancies of supply and demand for individual grains could describe them. The many reasons for changes in supply and demand can be considered together if they result in a surplus or deficit that is the primary reason for changes in grain inventories. Inventories can then be used as an indicator of supply and demand shocks to construct a quantitative model of prices [118]. However, estimates provided by the US Department of Agriculture [95] of supply and demand are not consistent with global food prices when considered within such a model. The example of corn is shown in Fig. 2 F (see also SI Appendix, Fig. 1). Prices shift upwards if there is a deficit and downwards if there is a surplus. In principle, the model allows a fit of both the observed price of the commodity and its consumption (or production). Prior to 2000 the main features of price dynamics can be fit by the model, consistent with earlier studies on the role of supply and demand [148, 149]. However, since 2000, both the price and consumption values, including the recent large price in-



**Fig. 4. Impact of food prices on grain inventories** - A deviation of actual prices (solid blue curve) from equilibrium (dashed blue curve) indicated by the red arrow leads to an increase in grain inventories (green shaded area) delayed by approximately a year (red to green arrow). This prediction of the theory is consistent with data for 2008/2009. Increasing inventories are counter to supply and demand explanations of the reasons for increasing food prices in 2010. Restoring equilibrium would enable vulnerable populations to afford the accumulating grain inventories.

creases, are not well described. There are reductions in the inventories around the year 2000, which give rise to significant price increases according to the model. However, the timing of these model-derived price increases precedes by three to four years the actual price increases. Also, the model implies an increase in consumption at that time that does not exist in the consumption data. Among the reasons for a reduction in reserves in 2000 is a policy change in China to decrease inventories [8, 150]. Such a policy change would affect reserves but would not describe market supply and demand. Another reason for the inability for the supply and demand model to describe prices is the role of speculation as discussed above, and shown in Fig. 1. The high peaks of recent price behavior have also suggested to some that the mechanism is a decline of supply and demand elasticities, i.e. high sensitivity of prices to small variations in supply and demand quantities [8]. However, for this explanation to be valid, supply and demand shocks must still correspond to price dynamics, and this connection is not supported in general by Granger causal analysis [2, 15].

We note that our analysis of the effect of commodity investments on the food price index aggregates the impact of speculator investment across multiple grains. However, it is enlightening to consider the impact on the rice price dynamics in particular. The direct impact of speculators on rice is small because rice is not included in the primary commodity index funds, as it is not much traded on the US exchanges. Instead, the price of rice is indirectly affected by the prices of wheat and corn, especially in India where wheat and rice can be substituted for each other. A sharp price peak in rice occurred only in 2008 (there is no peak in 2010) and this peak can be directly attributed to the global reaction to India's decision, in the face of rising wheat prices, to stop rice exports [2, 13, 151]. The observation that rice did not have the behavior of other grains is consistent with and reinforces our conclusions about the importance of speculators in the price of corn and wheat, and thus food overall.

## Discussion

**Inventory dynamics.** Prices above equilibrium reduce demand and increase supply leading to accumulation of grain inventories. Accumulation or depletion of inventory is often cited as the reason for rapid adjustment of prices toward equilibrium. However, while prices affect decisions immediately, delivery

occurs after futures contract maturation. Futures contracts may be bought with maturity horizons at intervals of three, six, nine and twelve months, or more. The expected time delay is the characteristic time over which producers and consumers choose to contract for delivery, reflecting their hedging and planning activities, and can be reasonably estimated to be six months to a year due to both agricultural cycles and financial planning. Thus, our model predicts that price deviations from equilibrium will be accompanied after such a time delay by changes in grain inventories. Figure 4 shows that this prediction is consistent with empirical data [95]. World grain inventories increased most rapidly between Sept. 2008 and 2009, one year after the first speculative bubble. (Claims of decreasing inventories refer to the period before 2008 [152].) Inventories continued to increase, but less rapidly, one year after the near equilibrium prices of 2009. According to the model, this period involved a rapid increase in corn use for ethanol production and shifting of food consumption to other grains, which was a major shock to the agriculture and food system. The increasing inventories are not consistent with supply and demand reasons for the price increases in 2010, but are consistent with our model in which the rising prices in 2010 are due to speculation.

As inventories increase, inventory information becomes available after an additional time delay. This information could influence investors, leading to the kind of Walrasian selling and buying that would reverse trends and restore equilibrium prices, i.e. cause a crash. The market reaction for pricing might be delayed further by the time participants take to react to these signals. Still, this provides an estimate of the duration of speculative bubbles. Indeed, the time until the peak of the bubbles of approximately 12 months in both 2007-8 and 2010-1 provides a better estimate of time frames than the coarser inventory data does and is consistent with the financial planning timeframes of producers and consumers. This suggests that investors may only be informed after actual supply and demand discrepancies are manifest in changing inventories. The existence of a second speculator bubble in 2010 raises the question of why speculators did not learn from the first crash to avoid such investing. Speculators, however, profited from the increase as well as lost from the decline and they may have an expectation that they can successfully time market directional changes, leaving others with losses (the "greater fool theory").

The recent increasing inventories also raise humanitarian questions about the current global food crisis and efforts to address hunger in vulnerable populations in the face of increasing world prices [153-156]. The amount of the increase in inventories—140 million metric tons (mmt) from Sept 2007 to Sept 2010—is the amount consumed by 440 million individuals in one year. According to our model, the reason much of this grain was not purchased and eaten is the increase in food prices above equilibrium values due to speculation. This unconsumed surplus along with the 580 mmt of grain that was used for ethanol conversion since 2004 totals 720 mmt of grain, which could otherwise have been eaten by many hungry individuals. These outcomes are not only ethically disturbing, they are also failures of optimal allocation according to economic principles. The deregulation of commodity markets resulted in non-equilibrium prices that caused a supply and demand disruption/disequilibrium driving lower consumption and higher production—inventories accumulated while people who could have afforded the equilibrium prices went hungry. Regulation of markets and government subsidies to promote corn to ethanol conversion have distorted the existing economic allocation by diverting food to energy use. This raised equilibrium prices, increased energy supply by a small fraction (US corn ethanol accounted for less than 1% of US energy con-

sumption in 2009 [157]) and reduced grain for food by a much larger one (US corn used for ethanol production is 4.3% of the total world grain production, even after allowing for the feed byproduct [95,96]). The failures of both deregulation and regulation ably demonstrate that the central issue for policy is not whether to regulate, but how to choose the right regulations.

**Policy implications.** A parsimonious explanation that accounts for food price change dynamics over the past seven years can be based upon only two factors: speculation and corn to ethanol conversion. We can attribute the sharp peaks in 2007/2008 and 2010/2011 to speculation, and the underlying upward trend to biofuels. The impact of changes in all other factors is small enough to be neglected in comparison to these

effects. Our analysis reinforces the conclusions of some economic studies that suggest that these factors have the largest influence [2, 158]. Our model provides a direct way to represent speculators, test if they can indeed be responsible for price effects, and determine the magnitude of those effects. The pricing mechanisms of the spot food price market confirm that futures prices are the primary price-setting mechanism, and that the duration of commodity bubbles is consistent with the delay in supply and demand restoring forces. Despite the artificial nature of speculation-driven price increases, the commodities futures market is coupled to actual food prices, and therefore to the ability of vulnerable populations—especially in poor countries—to buy food [139, 159–162].

1. Food and Agriculture Organization of the United Nations (2011) FAO Food Price Index. Available at [www.fao.org/worldfoodsituation/foodpricesindex](http://www.fao.org/worldfoodsituation/foodpricesindex). Accessed on November 21, 2011.
2. Timmer CP (2008) Causes of high food prices. Asian Development Bank, ADB Economics Working Paper Series 128. Available at [www.adb.org/publications/causes-high-food-prices](http://www.adb.org/publications/causes-high-food-prices). Accessed October 2, 2015.
3. Lustig N (2008) Thought for food: The causes and consequences of soaring food prices. Shapiro Lecture. Available at [www.slidefinder.net/t/thought\\_food.causes.consequences.soaring/17529506](http://www.slidefinder.net/t/thought_food.causes.consequences.soaring/17529506). Accessed October 4, 2015.
4. Baffes J, Hanjotis T (2010) Placing the 2006/2008 commodity price boom into perspective. World Bank Development Prospects Group 5371(World Bank, Washington, DC). Available at [ipcc-wg2.gov/njlite/download2.php?id=8256](http://ipcc-wg2.gov/njlite/download2.php?id=8256). Accessed October 2, 2015.
5. Piesse J, Thirtle C (2009) Three bubbles and a panic: An explanatory review of recent food commodity price event. *Food Policy* 34(2):119-129.
6. Fuglie KO (2008) Is a slowdown in agricultural productivity growth contributing to the rise in commodity prices? *Agric Econ* 39(s1):431-441.
7. Gilbert GL (2010) How to understand high food prices. *J Agric Econ* 61(2):398-425.
8. Abbott P, de Battisti AB (2009) Recent global food price shocks: Causes, consequences and lessons for African governments and donors. *J Afr Econ* 20(1):i12-i62.
9. Al-Riffai P, Dimaranan B, Laborde D (2010) Global trade and environmental impact study of the EU biofuels mandate (ATLASS Consortium). Available at [trade.ec.europa.eu/doclib/docs/2010/march/tradoc.145954.pdf](http://trade.ec.europa.eu/doclib/docs/2010/march/tradoc.145954.pdf).
10. De Gorter H, Just DR (2010) The social costs and benefits of biofuels: The intersection of environmental, energy and agricultural policy. *Appl Econ Perspect Policy* 32(1):4-32.
11. Benson T, Mugarura S, Wanda K (2008) Impacts in Uganda of rising global food prices: The role of diversified staples and limited price transmission. *Agric Econ* 39(s1):513-524.
12. Alexandratos N (2008) Food price surges: Possible causes, past experience, and longer term relevance. *Popul Dev Rev* 34(4):663-697.
13. Meyers WH, Meyer S (2008) Causes and implications of the food price surge. FAPRI-MU Report 12-08 (FAPRI-MU, Columbia, MO). Available at [www.fapri.missouri.edu/wp-content/uploads/2015/02/FAPRI-MU-Report-12-08.pdf](http://www.fapri.missouri.edu/wp-content/uploads/2015/02/FAPRI-MU-Report-12-08.pdf). Accessed October 2, 2015.
14. Beddington J (2010) Food security: Contributions from science to a new and greener revolution. *Phil Trans R Soc B Land Biol Sci* 365(1537):61-71.
15. Cooke B, Robles M (2009) Recent food prices movements: A time series analysis. IFPRI Discussion Paper 00942 (IFPRI, Washington, DC). Available at [cdm15738.contentdm.oclc.org/utils/getfile/collection/p15738col12/id/28658/filename/28659.pdf](http://cdm15738.contentdm.oclc.org/utils/getfile/collection/p15738col12/id/28658/filename/28659.pdf). Accessed October 2, 2015.
16. Clapp J, Helleiner E (2010) Troubled futures? The global food crisis and the politics of agricultural derivatives regulation. *Rev Int Polit Econ* 19(2):181-207.
17. Timmer CP (2009) Rice price formation in the short run and the long run: The role of market structure in explaining volatility. Center for Global Development Working Paper Series 172 (Center for Global Development, Washington, DC). Available at [www.cgdev.org/files/1422136.file.Timmer.Rice.Price.FINAL.pdf](http://www.cgdev.org/files/1422136.file.Timmer.Rice.Price.FINAL.pdf). Accessed October 2, 2015.
18. Hochman G, Sexton SE, Zilberman DD (2008) The economics of biofuel policy and biotechnology. *J Agric Food Ind Org* 6(8):1-22.
19. Dewbre J, Giner C, Thompson W, Von Lampe M (2008) High food commodity prices: Will they stay? Who will pay? *Agric Econ* 39(s1):393-403.
20. Headey DD (2010) Rethinking the global food crisis: The role of trade shocks. IFPRI Discussion Paper 00958 (IFPRI, Washington, DC). Available at [cdm15738.contentdm.oclc.org/utils/getfile/collection/p15738col12/id/831/filename/832.pdf](http://cdm15738.contentdm.oclc.org/utils/getfile/collection/p15738col12/id/831/filename/832.pdf). Accessed October 2, 2015.
21. Khosla V (2008) Biofuels: Clarifying assumptions. *Science* 322(5900):371-374, author reply 371-374.
22. Abbott P (2009) Development dimensions of high food prices. OECD Food, Agriculture and Fisheries Working Papers 18 (OECD, Paris), 10.1787/222521043712.
23. Sarris A (2009) Evolving structure of world agricultural trade and requirements for new world trade rules. Expert Meeting on How to Feed the World in 2050. Available at [ftp.fao.org/docrep/fao/012/ak979e/ak979e00.pdf](http://ftp.fao.org/docrep/fao/012/ak979e/ak979e00.pdf). Accessed October 2, 2015.
24. Harrison RW (2009) The food versus fuel debate: Implications for consumers. *J Agric Applied Econ* 41(2):493-500.
25. Searchinger T (2009) Government policies and drivers of world biofuels, sustainability criteria, certification proposals and their limitations. Biofuels: Environmental Consequences and Interactions with Changing Land Use, eds Howarth RW, Bringezu S (Cornell Univ, Ithaca, NY), pp 37-52.
26. Lo Y-T, Chang Y-H, Lee M-S, Wahlqvist ML (2009) Health and nutrition economics: Diet costs are associated with diet quality. *Asia Pac J Clin Nutr* 18(4):598-604.
27. Tyner WE (2010) The integration of energy and agricultural markets. *Agric Econ* 41(s1):193-201.
28. Che X, Huang H, Khanna M, Önal H (2011) Meeting the mandate for biofuels: Implications for land use, food and fuel prices. National Bureau of Economic Research Working Paper 16697 (National Bureau of Economic Research, Cambridge, MA).
29. Khanna M, Hochman G, Rajagopal D, Sexton S, Zilberman D (2009) Sustainability of food, energy and environment with biofuels. *CAB Reviews: Perspectives in Agriculture, Veterinary Science, Nutr Nat Resources* 4(28):1-10.
30. Saghalian SH (2010) The impact of the oil sector on commodity prices: Correlation or causation? *J Agric Applied Econ* 42(3):477-485.
31. Wiggins S, Keats S, Vigneri M (2010) Impact of the global financial and economic situation on agricultural markets and food security. ODI Working Papers 314 (ODI, London). Available at [www.odi.org/sites/odi.org.uk/files/odi-assets/publications-opinion-files/5780.pdf](http://www.odi.org/sites/odi.org.uk/files/odi-assets/publications-opinion-files/5780.pdf). Accessed October 2, 2015.
32. Armah P, Archer A, Phillips GC (2009) Drivers leading to higher food prices: Biofuels are not the main factor. *In Vitro Cell Dev Biol Plant* 45(3):330-341.
33. Baek J, Koo WW (2009) Analyzing factors affecting US food price inflation. International Agricultural Trade Research Consortium Analytic Symposium (IATRC, Seattle). Available at [iarc.software.umn.edu/activities/symposia/2009Seattle/seattle-BaekKoo.pdf](http://iarc.software.umn.edu/activities/symposia/2009Seattle/seattle-BaekKoo.pdf). Accessed October 2, 2015.
34. Chantret F, Gohin A (2009) The long-run impact of energy prices on world agricultural markets: The role of macro-economic linkages. International Agricultural Trade Research Consortium Analytic Symposium (IATRC, Seattle). Available at [iarc.software.umn.edu/activities/symposia/2009Seattle/seattle-ChantretGohin.pdf](http://iarc.software.umn.edu/activities/symposia/2009Seattle/seattle-ChantretGohin.pdf). Accessed October 2, 2015.
35. Bureau JC, Guyomard H, Jacquet F, Tréguer D (2010) European biofuel policy: How far will public support go? *Handbook of Bioenergy Economics and Policy*, eds Khanna M, Scheffran J, Zilberman D (Springer, New York), pp 401-425.
36. Sarris A (2009) Evolving structure of world agricultural market instability and requirements for new world trade rules. *The Evolving Structure of World Agricultural Trade: Implications for Trade Policy and Trade Agreements*, eds Sarris A, Morrison J (FAO, Rome).
37. Doering OC, Tyner WE (2009) US and international policies affecting liquid biofuels' expansion and profitability. *Int J Biotechnol* 11(1-2):150-167.
38. Jansen M, von Uexkull E (2010) Trade and Employment in the Global Crisis (International Labor Office, Geneva).
39. Martin MA (2010) First generation biofuels compete. *N Biotechnol* 27(5):596-608.
40. Pender J (2009) The World Food Crisis, Land Degradation, and Sustainable Land Management: Linkages, Opportunities, and Constraints (TerraAfrica Partnership, Midrand, South Africa).
41. Orden D (2010) Recent macroeconomic dynamics and agriculture in historical perspective. *J Agric Applied Econ* 42(3):467-476.
42. Timilsina GR, Shrestha A (2010) How much hope should we have for biofuels? *Energy* 36(4):2055-2069.
43. Kwon D-H, Koo WW (2009) Price transmission channels of energy and exchange rate on food sector: A disaggregated approach based on stage of process. *Agriculture and Applied Economics Association Annual Meeting 2009 (AAEA, Milwaukee)*. Available at [ageconsearch.umn.edu/bitstream/49334/2/AAEA.2009.Energy.pdf](http://ageconsearch.umn.edu/bitstream/49334/2/AAEA.2009.Energy.pdf). Accessed October 2, 2015.



44. Bouet A, Corong E (2009) Regional trade cooperation and food prices: An assessment for South Asian Free Trade. Available at [www.gtap.agecon.purdue.edu/resources/download/4508.pdf](http://www.gtap.agecon.purdue.edu/resources/download/4508.pdf). Accessed on November 21, 2011.
45. Hochman G, Rajagopal D, Timilsina GR, Zilberman D (2014) Quantifying the causes of the global food commodity price crisis. *Biomass and Bioenergy* 68(1):106-114.
46. Amponsah WA (2009) Food insecurity and other economic development challenges facing African countries: Are they caused only by commodity price volatility? International Agricultural Trade Research Consortium, Analytic Symposium (IATRC, Seattle). Available at [iatrc.software.umn.edu/activities/symposia/2009Seattle/seattle-Amponsah.pdf](http://iatrc.software.umn.edu/activities/symposia/2009Seattle/seattle-Amponsah.pdf). Accessed October 2, 2015.
47. Mondt A, Koo CM, Kim WJ (2010) Oil shocks and the world rice market puzzle: A structural VAR analysis. *Korea World Econ* 12(2):281-325.
48. Tyner WE (2010) What drives changes in commodity prices? Is it biofuels? *Biofuels* 1(4):535-537.
49. Ahrens H (2010) The world food crisis: Questions of economic theory and contemporary practices. *Vestnik BSAU* 4. Available at [vestnik.bsau.ru/netcat.files/File/VESTNIK/4-2010/16.pdf](http://vestnik.bsau.ru/netcat.files/File/VESTNIK/4-2010/16.pdf). Accessed October 2, 2015.
50. Searchinger T (2009) Evaluating biofuels. Brussels Forum Paper Series (The German Marshall Fund of the United States, Washington, DC). Available at [rsb.org/pdfs/documents.and.resources/Brussels-Forum-Paper-Searchinger-2009.pdf](http://rsb.org/pdfs/documents.and.resources/Brussels-Forum-Paper-Searchinger-2009.pdf). Accessed October 2, 2015.
51. Timilsina GR, Shrestha A (2010) Biofuels: Markets, targets and impacts. World Bank Policy Research Working Paper 5364 (World Bank, Washington, DC). Available at [openknowledge.worldbank.org/bitstream/handle/10986/3848/WPS5364.pdf](http://openknowledge.worldbank.org/bitstream/handle/10986/3848/WPS5364.pdf). Accessed October 2, 2015.
52. Wright B, Caffero C (2010) Grain reserves and food security in MENA countries (World Bank, Washington, DC). Available at [siteresources.worldbank.org/DEC/Resources/84797-1288208580656/7508096-1288208619603/Wright\\_Grain\\_Reserves.and\\_Food\\_Security.in.MENA.Countries.PAPER.pdf](http://siteresources.worldbank.org/DEC/Resources/84797-1288208580656/7508096-1288208619603/Wright_Grain_Reserves.and_Food_Security.in.MENA.Countries.PAPER.pdf). Accessed October 2, 2015.
53. Rutten MM, Chant LJ, Meijerink GW (2011) Sit down at the ballgame: How trade barriers make the world less food secure. *Food Policy* 38(1):1-10.
54. Rajcaniova M, Pokrivka J (2010) What is the real relationship between biofuels and agricultural commodities? Available at [www.pulib.sk/elpub2/FM/Kotulic13/pdf.doc/08.pdf](http://www.pulib.sk/elpub2/FM/Kotulic13/pdf.doc/08.pdf). Accessed October 2, 2015.
55. Simelton E (2010) Don't we all want good weather and cheap food? *Changing Climates, Earth Systems, and Society*, ed Dodson J (Springer, Dordrecht, Netherlands), pp 201-215.
56. Rajagopal D, Zilberman D (2010) On environmental lifecycle assessment for policy selection. UCLA Institute of the Environment and Sustainability WPS 2 (UCLA, Los Angeles). Available at [escholarship.org/uc/item/39k9h976](http://escholarship.org/uc/item/39k9h976). Accessed October 2, 2015.
57. Headey DD, Malaiyandi S, Fan S (2009) Navigating the perfect storm. IFPRI Discussion Paper 00889 (IFPRI, Washington, DC). Available at [ageconsearch.umn.edu/bitstream/53212/2/ShenggenFanFoodandfinancialcrisis.v5.pdf](http://ageconsearch.umn.edu/bitstream/53212/2/ShenggenFanFoodandfinancialcrisis.v5.pdf). Accessed October 2, 2015.
58. Commodity Futures Modernization Act of 2000 (Pub. L. 106-554, Sec. 1(a)(5) [H.R. 5660], Dec. 21, 2000, 114 Stat. 2763, 2763A-365).
59. Kaufman F (July 2010) The food bubble: How Wall Street starved millions and got away with it. *Harper's Magazine*, pp 27-34.
60. Money Morning (January 13, 2009) How deregulation fueled the financial crisis. *The Market Oracle*. Available at [www.marketoracle.co.uk/Article8210.html](http://www.marketoracle.co.uk/Article8210.html). Accessed November 21, 2011.
61. Federal Register concept release 74 (2009), p 12283.
62. Stewart S, Waldie P (May 31, 2008) Who is responsible for the global food crisis? *Globe and Mail*. Available at [www.theglobeandmail.com/report-on-business/who-is-responsible-for-the-global-food-crisis/article25579668/](http://www.theglobeandmail.com/report-on-business/who-is-responsible-for-the-global-food-crisis/article25579668/). Accessed November 21, 2011.
63. 42 USC §15801 (2005).
64. Sandalow DB (2007) *Freedom From Oil: How the Next President Can End the United States' Oil Addiction* (McGraw-Hill, New York).
65. Krigman E (2007) All you need to know about ethanol (Center for American Progress, Washington, DC). Available at [genprogress.org/voices/2007/12/12/13243/all-you-need-to-know-about-ethanol/](http://genprogress.org/voices/2007/12/12/13243/all-you-need-to-know-about-ethanol/). Accessed October 19, 2015.
66. Hahn RW (2008) Ethanol: Law, economics, and politic. *Stanford Law Pol Rev* 19(3):434-471.
67. Lerner RL (2000) The mechanics of the commodity futures markets: What they are and how they function. *Future Investment Series 2* (Mount Lucas Management Corp, Princeton). Available at [turtletreader.com/beginners.report.pdf](http://turtletreader.com/beginners.report.pdf). Accessed October 19, 2015.
68. Krugman P (February 7, 2011) Signatures of speculation. *New York Times*. Available at [krugman.blogs.nytimes.com/2011/02/07/signatures-of-speculation/?r=0](http://krugman.blogs.nytimes.com/2011/02/07/signatures-of-speculation/?r=0). Accessed November 21, 2011.
69. Worthy M (2011) Broken markets: How financial market regulation can help prevent another global food crisis. *World Development Movement Report* (World Development Movement, London). Available at [www.globaljustice.org.uk/sites/default/files/files/resources/broken-markets.pdf](http://www.globaljustice.org.uk/sites/default/files/files/resources/broken-markets.pdf). Accessed October 2, 2015.
70. Henn M (2011) Evidence on the impact of commodity speculation by scientists, analysts and public institutions. Available at [www2.weed-online.org/uploads/evidence.on.impact.of.commodity.speculation.pdf](http://www2.weed-online.org/uploads/evidence.on.impact.of.commodity.speculation.pdf). Accessed October 19, 2015.
71. Cooper RN, Lawrence RZ (1975) The 1972-75 commodity boom. *Brookings Pap Econ Act* 6(3):671-724.
72. Robles M, Torero M, von Braun J (2009) When speculation matters. *International Food Policy Research Institute Issue Brief 57* (IFPRI, Washington, DC). Available at [www.cftc.gov/jdc/groups/public/@swaps/documents/file/plstudy.40.ifpri.pdf](http://www.cftc.gov/jdc/groups/public/@swaps/documents/file/plstudy.40.ifpri.pdf). Accessed October 2, 2015.
73. Hernandez M, Torero M (2010) Examining the dynamic relationship between spot and future prices of agricultural commodities. Technical Report 00988, International Food Policy Research Institute, Markets, Trade and Institutions Division (IFPRI, Washington, DC). Available at [citeseerx.ist.psu.edu/viewdoc/download?doi=10.1.1.227.1033&rep=rep1&type=pdf](http://citeseerx.ist.psu.edu/viewdoc/download?doi=10.1.1.227.1033&rep=rep1&type=pdf). Accessed October 2, 2015.
74. Brock WA, Hommes CH (1997) A rational route to randomness. *Econometrica* 65(5):1059-1095.
75. LeBaron B, Arthur WB, Palmer R (1999) Time series properties of an artificial stock market. *J Econ Dyn Control* 23(9-10):1487-1516.
76. Lux T, Marchesi M (1999) Scaling and criticality in a stochastic multi-agent model of a financial market. *Nature* 397(6719):498-500.
77. Levy M, Levy H, Solomon S (2000) *Microscopic Simulation of Financial Markets: From Investor Behavior to Market Phenomena* (Academic, San Diego), 1st Ed.
78. Chiarella C, He X-Z (2001) Asset price and wealth dynamics under heterogeneous expectations. *Quant Finance* 1(5):509-526.
79. Muchnik L, Solomon S (2003) Statistical mechanics of conventional traders may lead to non-conventional market behavior. *Phys Scr T* 2003(T106):41-47.
80. De Grauwe P, Grimaldi M (2006) *The Exchange Rate in a Behavioral Finance Framework* (Princeton Univ Press, Princeton).
81. Hommes C, Wagener FOO (2009) Complex evolutionary systems in behavioral finance. *Handbook of Financial Markets: Dynamics and Evolution*, eds Hens T, Schenk-Hoppé KR (North Holland, Amsterdam), pp 217-276.
82. Hommes C (2013) *Behavioral Rationality and Heterogeneous Expectations in Complex Economic Systems* (Cambridge Univ Press, Cambridge, UK).
83. Munier B (2010) Boundedly rational exuberance on commodity markets. *Risk Decision Analysis* 2(1):33-50.
84. Baak SJ (1999) Tests for bounded rationality with a linear dynamic model distorted by heterogeneous expectations. *J Econ Dyn Control* 23(9-10):1517-1543.
85. Chavas J-P (2000) On information and market dynamics: The case of the U.S. beef market. *J Econ Dyn Control* 24(5-7):833-853.
86. Kardar M, Parisi G, Zhang Y-C (1986) Dynamic scaling of growing interfaces. *Phys Rev Lett* 56(9):889-892.
87. Kardar M (2007) *Statistical Physics of Fields* (Cambridge Univ Press, Cambridge, UK).
88. Bar-Yam Y, Bialik M (2013), *Beyond big data: Identifying important information for real world challenges* (New England Complex Systems Institute, Cambridge, MA). Available at [neci.edu/projects/yaneer/information/](http://neci.edu/projects/yaneer/information/). Accessed October 19, 2015.
89. Lagi M, Bar-Yam Y, Bertrand K, Bar-Yam Y (2011), The food crises: A quantitative model of food prices including speculators and ethanol conversion. *arXiv:1109.4859 [q-fin.GN]*.
90. Lagi M, Bar-Yam Y, Bertrand K, Bar-Yam Y (2012), Update February 2012 — The food crises: Predictive validation of a quantitative model of food prices including speculators and ethanol conversion. *arXiv:1203.1313 [physics.soc-ph]*.
91. Lagi M, Bertrand KZ, Bar-Yam Y (2011) The food crises and political instability in North Africa and the Middle East. *arXiv:1108.2455v1 [physics.soc-ph]*.
92. Bradsher K (2008) A drought in Australia, a global shortage of rice. *New York Times*. Available at [www.nytimes.com/2008/04/17/business/worldbusiness/17warm.html?r=3](http://www.nytimes.com/2008/04/17/business/worldbusiness/17warm.html?r=3). Accessed October 19, 2015.
93. Bryant N (March 11, 2008) Australia's food bowl lies empty. *BBC News*. Available at [news.bbc.co.uk/2/hi/asia-pacific/7289194.stm](http://news.bbc.co.uk/2/hi/asia-pacific/7289194.stm). Accessed October 19, 2015.
94. Collier K (September 26, 2007) Drought hits food prices. *Herald Sun*.
95. United States Department of Agriculture Foreign Agricultural Service (2011) *Production, Supply and Distribution Online*. Available at [apps.fas.usda.gov/psdonline/](http://apps.fas.usda.gov/psdonline/). Accessed November 21, 2011.
96. Hoffman L, Baker A (2010) Market issues and prospects for U.S. distillers' grains supply, use, and price relationships. *Outlook no. FDS-10k-01* (Economic Research Service, USDA, Washington, DC). Available at [www.ers.usda.gov/media/107533/fds10k01.1.pdf](http://www.ers.usda.gov/media/107533/fds10k01.1.pdf). Accessed October 19, 2015.
97. OANDA (2011) *Historical exchange rates*. Available at [www.oanda.com/currency/historical-rates](http://www.oanda.com/currency/historical-rates). Accessed November 21, 2011.
98. Index Mundi (2011) *Commodity prices*. Available at [www.indexmundi.com/commodities](http://www.indexmundi.com/commodities). Accessed November 21, 2011.
99. Brown L (1995) *Who Will Feed China? Wake-Up Call for a Small Planet* (Worldwatch Institute Books, New York).
100. Schelling TC (January 23, 2011) The economics of global warming: Melting glaciers, rising incomes, and food. *Newsweek*. Available at [www.newsweek.com/thomas-schelling-economics-global-warming-66911](http://www.newsweek.com/thomas-schelling-economics-global-warming-66911). Accessed October 19, 2015.
101. Segelken R (August 7, 1997) U.S. could feed 800 million people with grain that livestock eat, Cornell ecologist advises animal scientists. *Cornell Chronicle*. Available at [www.news.cornell.edu/stories/1997/08/us-could-feed-800-million-people-grain-livestock-eat](http://www.news.cornell.edu/stories/1997/08/us-could-feed-800-million-people-grain-livestock-eat). Accessed November 21, 2011.
102. Wallen ZM (2010) Far from a can of corn: A case for reforming ethanol policy. *Ariz Law Rev* 52(1):129-155.
103. Boston Globe Editorial Board (March 13, 2009) King Corn cows Washington. *Boston Globe*. Available at [www.boston.com/bostonglobe/editorial\\_opinion/editorials/articles/2009/03/13/king\\_corn\\_cows\\_washington/](http://www.boston.com/bostonglobe/editorial_opinion/editorials/articles/2009/03/13/king_corn_cows_washington/). Accessed October 19, 2015.

104. Corn processing and utilization poster (2009) Center for Crops Utilization Research, Iowa State University. Available at [www.ccur.iastate.edu/education/cornposter.pdf](http://www.ccur.iastate.edu/education/cornposter.pdf). Accessed October 4, 2015.
105. Abbassian A (2008) Maize: International market profile (Grains Team, Economic and Social Department, Trade and Markets Division, FAO, Rome). Available at [siteresources.worldbank.org/INTAFRICA/Resources/257994-1215457178567/Maize.Profile.pdf](http://siteresources.worldbank.org/INTAFRICA/Resources/257994-1215457178567/Maize.Profile.pdf). Accessed October 19, 2015.
106. Pollan M (2006) *The Omnivore's Dilemma: A Natural History of Four Meals* (Penguin, New York), Chap 1.
107. Tenenbaum DJ (2008) Food vs. fuel: Diversion of crops could cause more hunger. *Environ Health Perspect* 116(6):A254-A257.
108. Mitchell D (2008) A note on rising food prices. World Bank Development Economics Group 4682 (World Bank, Washington, DC). Available at <https://openknowledge.worldbank.org/bitstream/handle/10986/6820/WP4682.pdf?sequence=1>. Accessed October 2, 2015.
109. Rosegrant MW (2008) Biofuels and grain prices: Impacts and policy responses. Testimony for the U.S. Senate Committee on Homeland Security and Governmental Affairs (International Food Policy Research Institute, Washington, DC). Available at [ebrary.ifpri.org/cdm/ref/collection/p15738coll2/id/10350](http://ebrary.ifpri.org/cdm/ref/collection/p15738coll2/id/10350). Accessed October 19, 2015.
110. The Economist (December 6, 2007) Food prices: Cheap no more. *Economist*. Available at [www.economist.com/node/10250420](http://www.economist.com/node/10250420). Accessed October 19, 2015.
111. Vidal J (2007) The looming food crisis. *Guardian*. Available at [www.theguardian.com/environment/2007/aug/29/food.g2](http://www.theguardian.com/environment/2007/aug/29/food.g2). Accessed October 19, 2015.
112. Houston Chronicle Editorial Board (November 10, 2010) Food versus fuel: Rising grain costs show folly of continuing federal ethanol subsidies. *Houston Chronicle*. Available at [www.chron.com/opinion/editorials/article/Food-versus-fuel-Rising-grain-costs-show-folly-1544249.php](http://www.chron.com/opinion/editorials/article/Food-versus-fuel-Rising-grain-costs-show-folly-1544249.php). Accessed October 19, 2015.
113. Weise E (February 14, 2011) Ethanol pumping up food prices. *USA Today*. Available at [usatoday30.usatoday.com/money/industries/food/2011-02-09-corn-low.N.htm](http://usatoday30.usatoday.com/money/industries/food/2011-02-09-corn-low.N.htm). Accessed October 19, 2015.
114. Walsh B (February 14, 2011) Why biofuels help push up world food prices. *Time*. Available at [content.time.com/time/health/article/0,8599,2048885,00.html](http://content.time.com/time/health/article/0,8599,2048885,00.html). Accessed October 19, 2015.
115. Leff J, Golan MD (2012) Easing U.S. ethanol mandate would help prevent food crisis: UN. *Reuters*. Available at [www.reuters.com/article/2012/08/10/us-ethanol-united-nations-idUSBRE8790CW20120810](http://www.reuters.com/article/2012/08/10/us-ethanol-united-nations-idUSBRE8790CW20120810). Accessed October 19, 2015.
116. Bennett D (April 21, 2011) Vilsack: No correlation between food prices and ethanol. *Delta Farm Press*. Available at [deltafarmpress.com/government/vilsack-no-correlation-between-food-prices-and-ethanol](http://deltafarmpress.com/government/vilsack-no-correlation-between-food-prices-and-ethanol). Accessed November 21, 2011.
117. Block J (March 26, 2011) Rising food prices? Can't blame ethanol. *Chicago Tribune*. Available at [articles.chicagotribune.com/2011-03-26/news/ct-oped-0328-biofuel-20110317.1.ethanol-production-ethanol-industry-corn-gluten](http://articles.chicagotribune.com/2011-03-26/news/ct-oped-0328-biofuel-20110317.1.ethanol-production-ethanol-industry-corn-gluten). Accessed October 19, 2015.
118. Abbott PC, Hurt C, Tyner WE (2008) What's driving food prices? (Farm Foundation, Oak Brook, IL). Available at [www.farmfoundation.org/news/articlefiles/404-FINAL%20WDFP%20REPORT%207-28-08.pdf](http://www.farmfoundation.org/news/articlefiles/404-FINAL%20WDFP%20REPORT%207-28-08.pdf). Accessed October 19, 2015.
119. USDA (2015) Grain: World Markets and Trade. Available at [apps.fas.usda.gov/pdsonline/circulars/grain.pdf](http://apps.fas.usda.gov/pdsonline/circulars/grain.pdf). Accessed October 2, 2015.
120. United States Department of Agriculture Economic Research Service (2011) Commodity costs and returns: Data. Available at [www.ers.usda.gov/data-products/commodity-costs-and-returns.aspx](http://www.ers.usda.gov/data-products/commodity-costs-and-returns.aspx). Accessed November 21, 2011.
121. Datamonitor (2011) Fertilizer: Global industry guide. Available at [http://www.researchandmarkets.com/research/a80b87/fertilizer\\_global\\_industry\\_guide](http://www.researchandmarkets.com/research/a80b87/fertilizer_global_industry_guide). Accessed November 21, 2011.
122. Heffer P (2009) Assessment of fertilizer use by crop at the global level. (International Fertilizer Industry Assoc, Paris). Available at [www.fertilizer.org/imis20/images/LibraryDownloads/AgCom.13.39%20-%20FUBC%20assessment%202010.pdf?WebsiteKey=411e9724-4bda-422f-abfc-8152ed74f306&=404%3bhttp%3a%2f%2fwww.fertilizer.org%3a80%2fen%2fimages%2fLibraryDownloads%2fAgCom.13.39+-+FUBC+assessment+2010.pdf](http://www.fertilizer.org/imis20/images/LibraryDownloads/AgCom.13.39%20-%20FUBC%20assessment%202010.pdf?WebsiteKey=411e9724-4bda-422f-abfc-8152ed74f306&=404%3bhttp%3a%2f%2fwww.fertilizer.org%3a80%2fen%2fimages%2fLibraryDownloads%2fAgCom.13.39+-+FUBC+assessment+2010.pdf). Accessed October 19, 2015.
123. Frenk D (July 13, 2010) Rebuttal of OECD study: Impact of speculative activity on commodity markets. *Trader's Narrative*. Available at [www.tradersnarrative.com/rebuttal-of-oecd-study-impact-of-speculative-activity-on-commodity-markets-4431.html](http://www.tradersnarrative.com/rebuttal-of-oecd-study-impact-of-speculative-activity-on-commodity-markets-4431.html). Accessed October 19, 2015.
124. The Associated Press (September 24, 1947) Speculation blamed for food price hikes. *The Logan Daily News*. Available at [www.newspapers.com/newspage/84991324](http://www.newspapers.com/newspage/84991324). Accessed October 4, 2015.
125. Markham JW (1986) *The History of Commodity Futures Trading and Its Regulation* (Praeger, Westport, CT).
126. Markham JW, Rev L (1991) Federal regulation of margin in the commodity futures industry: History and theory. *Temple Law Rev* 64(1):59-143.
127. Ludlow Cooperative Elevator Company. Grain Marketing Alternatives. Available at [www.ludlowcoop.com/contracts.php](http://www.ludlowcoop.com/contracts.php). Accessed July 21, 2015.
128. Hotelling H (1931) The economics of exhaustible resources. *J Polit Econ* 39(2):137-175.
129. Stein JL (1961) The simultaneous determination of spot and futures prices. *Am Econ Rev* 51(5):1012-1035.
130. Pindyck RS (2001) The dynamics of commodity spot and futures markets: A primer. *Energy J* (Camb Mass) 22(3):1-19.
131. Working H (1949) The theory of price of storage. *Am Econ Rev* 39(6):1254-1262.
132. Zulauf CR, Zhou H, Roberts MC (2005) Updating the estimation of the supply of storage model. *American Agricultural Economics Association Annual Meeting*. Available at [ageconsearch.umn.edu/bitstream/19122/1/sp05zu01.pdf](http://ageconsearch.umn.edu/bitstream/19122/1/sp05zu01.pdf). Accessed October 19, 2015.
133. Caballero RJ, Farhi E, Gourinchas P-O (2008) Financial crash, commodity prices and global imbalances. *National Bureau of Economic Research Working Paper 14521* (National Bureau of Economic Research, Cambridge, MA). Available at [www.nber.org/papers/w14521.pdf](http://www.nber.org/papers/w14521.pdf). Accessed October 2, 2015.
134. Lagi M, Bar-Yam Y (2010) Socio-economic impact of the financial crisis. (New England Complex Systems Institute, Cambridge, MA).
135. Standard & Poor's (2011) Case-Shiller home price indices. Available at [us.spindices.com/index-family/real-estate/sp-case-shiller](http://us.spindices.com/index-family/real-estate/sp-case-shiller). Accessed October 4, 2015.
136. Yahoo! Finance (2011) S&P 500 Index. Available at [finance.yahoo.com/q?s=%5E%5CSP%3A%3D0](http://finance.yahoo.com/q?s=%5E%5CSP%3A%3D0). Accessed November 21, 2011.
137. Balzli B, Hornig F (April 23, 2008) The role of speculators in the global food crisis. *Der Spiegel*. Available at [www.spiegel.de/international/world/deadly-greed-the-role-of-speculators-in-the-global-food-crisis-a-549187.html](http://www.spiegel.de/international/world/deadly-greed-the-role-of-speculators-in-the-global-food-crisis-a-549187.html). Accessed October 19, 2015.
138. Macwhirter I (April 17, 2008) The trading frenzy that sent prices soaring. *New Statesman*. Available at [www.newstatesman.com/world-affairs/2008/04/haiti-food-price-commodities](http://www.newstatesman.com/world-affairs/2008/04/haiti-food-price-commodities). Accessed October 19, 2015.
139. Wahl P (2008) Food speculation: The main cause of the price bubble in 2008 (World Economy, Ecology, and Development, Berlin). Available at [www2.weed-online.org/uploads/weed\\_food\\_speculation.pdf](http://www2.weed-online.org/uploads/weed_food_speculation.pdf). Accessed October 19, 2015.
140. Doggett T, Doering C (2011) Senators demand CFTC tackle oil speculation. *Reuters*. Available at [www.reuters.com/article/2011/05/11/us-senators-cftc-speculation-idUSTRE74A68720110511](http://www.reuters.com/article/2011/05/11/us-senators-cftc-speculation-idUSTRE74A68720110511). Accessed November 21, 2011.
141. Bernanke BS (2010) Monetary policy and the housing bubble. *Annual Meeting of the American Economic Association*, Atlanta, Georgia. Available at [www.federalreserve.gov/newsevents/speech/bernanke20100103a.htm](http://www.federalreserve.gov/newsevents/speech/bernanke20100103a.htm). Accessed November 21, 2011.
142. Tang K, Xiong W (2011) Index investment and financialization of commodities. *NBER Working Paper 16385* (National Bureau of Economic Research, Cambridge, MA). Available at [www.nber.org/papers/w16385.pdf](http://www.nber.org/papers/w16385.pdf). Accessed October 19, 2015.
143. Irwin SH, Sander DR (2010) The impact of index and swap funds on commodity futures markets. *OECD Food, Agriculture and Fisheries Working Papers 27* (OECD, Paris). Available at [www.oecd.org/trade/agricultural-trade/45534528.pdf](http://www.oecd.org/trade/agricultural-trade/45534528.pdf). Accessed October 2, 2015.
144. The Economist (2010) Clearing the usual suspects: Investors may not have caused commodity price rises. *Economist*. Available at [www.economist.com/node/16432870](http://www.economist.com/node/16432870). Accessed October 19, 2015.
145. Long JBD, Shleifer A, Summers LH, Waldmann RJ (1990) Positive feedback investment strategies and destabilizing rational speculation. *J Finance* 45(2):379-395.
146. Long JBD, Shleifer A, Summers LH, Waldmann R (1990) Noise trader risk in financial markets. *J Polit Econ* 98(4):703-738.
147. CRB Trader (2011) Futures market service. Available at [www.crbtrader.com/pubs/fms.asp](http://www.crbtrader.com/pubs/fms.asp). Accessed November 21, 2011.
148. Sumner DA, Mueller RAE (1989) Are harvest forecasts news? *USDA announcements and futures markets reactions*. *Am J Agric Econ* 71(1):1-8.
149. Deaton AS, Laroque G (1990) On the behavior of commodity prices. *National Bureau of Economic Research Working Paper w3439* (National Bureau of Economic Research, Cambridge, MA). Available at [www.nber.org/papers/w3439.pdf](http://www.nber.org/papers/w3439.pdf). Accessed October 19, 2015.
150. Huang J, Qiu H, Rozelle S (2008) More pain ahead for China's food prices. *Far Eastern Econ Rev* 171(5):8-13.
151. Timmer CP (2009) Did speculation affect world rice prices? *Working Papers 09-07*, Agricultural and Development Economics Division of the Food and Agriculture Organization of the United Nations (FAO-ESA, Rome). Available at [www.fao.org/3/a-ak232e.pdf](http://www.fao.org/3/a-ak232e.pdf). Accessed October 2, 2015.
152. Sanders DR, Irwin SH, Merrin RP (2008) The adequacy of speculation in agricultural futures markets: Too much of a good thing? *University of Illinois at Urbana-Champaign, Marketing and Outlook Research Report 2008-02*. Available at [ageconsearch.umn.edu/bitstream/37512/2/morr-08-02.pdf](http://ageconsearch.umn.edu/bitstream/37512/2/morr-08-02.pdf). Accessed October 2, 2015.
153. World Bank (August 2011) Poverty reduction and equity group at the World Bank. *Food price watch*. Available at [siteresources.worldbank.org/INTPOVERTY/News%20and%20Events/22982478/Food-Price-Watch-August-2011.htm](http://siteresources.worldbank.org/INTPOVERTY/News%20and%20Events/22982478/Food-Price-Watch-August-2011.htm). Accessed November 21, 2011.
154. United Nations (2011) Action plan on food price volatility and agriculture. Available at [un-foodsecurity.org/sites/default/files/110623.G20.AgMinisters.Action.Plan.Agriculture.Food.Price.Volatility.pdf](http://un-foodsecurity.org/sites/default/files/110623.G20.AgMinisters.Action.Plan.Agriculture.Food.Price.Volatility.pdf). Accessed November 21, 2011.
155. *New York Times* (August 15, 2011) Food prices and supply. *New York Times*. Available at [topics.nytimes.com/top/reference/timestopics/subjects/f/food\\_prices/index.html](http://topics.nytimes.com/top/reference/timestopics/subjects/f/food_prices/index.html). Accessed November 21, 2011.
156. Food and Agriculture Organization of the United Nations (2010) The state of food insecurity in the world: Addressing food insecurity in protracted crises (FAO, Rome). Available at [www.fao.org/docrep/013/i1683e/i1683e.pdf](http://www.fao.org/docrep/013/i1683e/i1683e.pdf). Accessed November 21, 2011.
157. U. S. Energy Information Administration (2011) Total energy. Available at [www.eia.gov/totalenergy/data/annual](http://www.eia.gov/totalenergy/data/annual). Accessed November 21, 2011.
158. Tsioumanis A, Mattas K (2009) The not-so-modern consumer, considerations on food prices, food security, new technologies and market distortions (European Association of Agricultural Economists, The Hague). Available at [ageconsearch.umn.edu/bitstream/58151/2/Tsioumanis.pdf](http://ageconsearch.umn.edu/bitstream/58151/2/Tsioumanis.pdf). Accessed October 19, 2015.

159. Arezki R, Brückner M (2011) Food prices and political instability. Technical Report WP/11/62 (International Monetary Fund, Washington, DC). Available at [www.imf.org/external/pubs/ft/wp/2011/wp1162.pdf](http://www.imf.org/external/pubs/ft/wp/2011/wp1162.pdf). Accessed October 19, 2015.
160. von Grebmer K, et al. (2008) 2008 Global Hunger Index: The challenge of hunger (International Food Policy Research Institute, Washington, DC). Available at [cdm15738.contentdm.oclc.org/utis/getfile/collection/p15738coll2/id/13975/filename/13976.pdf](http://cdm15738.contentdm.oclc.org/utis/getfile/collection/p15738coll2/id/13975/filename/13976.pdf). Accessed October 19, 2015.
161. von Grebmer K, et al. (2009) 2009 Global Hunger Index. The challenge of hunger: Focus on financial crisis and gender inequality (International Food Policy Research Institute, Washington, DC). Available at [cdm15738.contentdm.oclc.org/utis/getfile/collection/p15738coll2/id/15025/filename/15026.pdf](http://cdm15738.contentdm.oclc.org/utis/getfile/collection/p15738coll2/id/15025/filename/15026.pdf). Accessed October 19, 2015.
162. von Grebmer K, et al. (2010) 2010 Global Hunger Index. The challenge of hunger: Focus on the crisis of child undernutrition (International Food Policy Research Institute, Washington, DC). Available at [cdm15738.contentdm.oclc.org/utis/getfile/collection/p15738coll2/id/4764/filename/4765.pdf](http://cdm15738.contentdm.oclc.org/utis/getfile/collection/p15738coll2/id/4764/filename/4765.pdf). Accessed October 19, 2015.
163. Mill J, Little C (1848) Principles of Political Economy with Some of Their Applications to Social Philosophy (Little, Brown, Boston).
164. Friedman M (1953) The case for flexible exchange rates. Essays in Positive Economics (Univ of Chicago Press, Chicago), pp 157-203.
165. Commodity Exchange Act (Sept. 21, 1922) ch. 369, 42 Stat. 998 (7 USC 1 et seq.).
166. Baumol WJ (1957) Speculation, profitability and stability. Rev Econ Stat 39(3):263-271.
167. Leibenstein H (1950) Bandwagon, snob, and Veblen effects in the theory of consumers' demand. Q J Econ 64(2):183-207.
168. Harmon D, Bar-Yam Y (2008) Technical report on the SEC uptick repeal pilot (New England Complex Systems Institute, Cambridge, MA). Available at [www.necsi.edu/headlines/uptickreport.html](http://www.necsi.edu/headlines/uptickreport.html). Accessed October 19, 2015.

## Supporting Information Appendix

In the Supporting Information, Section A provides a review of literature on causes of food prices, Sections C through F construct the mathematical model which we use to fit food prices. More specifically:

- Section A: Literature review of discussions of the causes of food price increases,
- Section B: A supply and demand model of commodity price formation,
- Section C: Corn ethanol demand model for food prices,
- Section D: Dynamic model of speculators and its behaviors,
- Section E: Combining ethanol demand and speculators, and comparison with data,
- Section F: Reduced model tests with only demand or only speculation.

**Section A: Literature Review.** The literature on the mechanisms of food price volatility is extensive. In this section we summarize a sample of the literature on the causes of the food price crisis of 2007-2008. For each paper, we note in Tables S1 and S2 which of several potential factors the authors examine: the change of diet in developing countries, biofuel conversion, financial speculation in the commodity futures market, the price of crude oil, and variation in currency exchange rates. We also list other possible causes addressed in each paper, and specify the timeframe in question, in particular whether it addresses just the rising prices in 2007/08, includes the subsequent decline and if it also includes the increase in 2010/11. For each potential factor, we indicate whether the paper suggests or determines it to be a cause (“yes” or “no”). We also specify whether the analysis presented in the paper is quantitative (with an asterisk “\*”), qualitative (with a “#”), or only a passing mention (normal). If the paper does not consider a particular factor, that column is left blank.

**Section B: Commodity Prices: A Supply and Demand Model.** In this section we present a simple model of commodity price formation based on supply and demand and show that, while the model is in general able to capture trends in prices before

the year 2000, after this date other factors play a central role in determining prices.

Studies of supply-demand relationships for commodities have used two functional forms to characterize the price-quantity dependence [64]: a linear (constant slope) form [65] and a log-linear (constant elasticity) form [66,67]. If quantity demanded ( $Q_d$ ) for a given commodity is determined by its price ( $P$ ), the linear relationship is written as:

$$Q_d(t) = \alpha_d - \beta_d P(t) \quad [2]$$

while the log-linear relationship is written as:

$$\ln Q_d(t) = \ln \alpha_d - \beta_d \ln P(t) \quad [3]$$

Even though in empirical studies the choice of functional form is an important decision, it is generally assumed that there is no *a priori* reason for selecting either one [68]. A more general approach is given by the Box-Cox transformation [69],

$$Q_d(t, \lambda) = \alpha_d - \beta_d P(t, \lambda) \quad [4]$$

where  $\lambda$  is the parameter of transformation, such that

$$Q_d(t, \lambda) = \frac{Q_d(t)^\lambda - 1}{\lambda} \quad [5]$$

$$P(t, \lambda) = \frac{P(t)^\lambda - 1}{\lambda} \quad [6]$$

As  $\lambda \rightarrow 1$ , Eq. 4 becomes Eq. 2, while as  $\lambda \rightarrow 0$ , Eq. 4 becomes Eq. 3. Similar equations hold for supply.

We assume that, at each time step,  $P(t)$  changes due to either a supply shock or a demand shock. In order to identify what kind of shock occurs, we define the surplus,  $S(t)$ , as the difference between production and consumption of the commodity at time  $t$ . We assume there is a positive demand shock at time  $t$  if the surplus  $S(t-1)$  is negative (shortage), so that the intercept of the demand curve shifts according to:

$$\alpha_d(t) = \alpha_d(t-1) - S(t-1) \quad [7]$$

An analogous argument can be made for a supply shock, with appropriate signs. At each time step we can therefore estimate both price and quantity at equilibrium:

$$P_e(t, \lambda) = \frac{\alpha_d(t) - \alpha_s(t)}{\beta_d + \beta_s} \quad [8]$$

$$Q_e(t, \lambda) = \frac{\alpha_d(t)\beta_s + \alpha_s(t)\beta_d}{\beta_d + \beta_s} \quad [9]$$

where  $\alpha_s(t)$  and  $\beta_s$  are the intercept and slope of the supply curve, respectively.

Best fits of Eq. 8 and Eq. 9 for wheat, corn, rice and sugar are shown in Fig. 1.

**Section C: Corn Ethanol and Food Prices.** Currently, the two main uses of corn are livestock feed (consuming 41.4% of the US supply in 2010), and ethanol production (40.1%) [73]. Other uses include direct human consumption and the production of oil, sweeteners and starch for use in a wide range of processed foods. Corn is therefore heavily used as an input for many food sectors, and it is reasonable to consider the amount of corn used to produce ethanol to have an impact on food prices [74]. The proportion of corn for ethanol has increased from 6% to its current value of 40% over the last 10 years.

We begin by assuming a linear dependence of the corn quantity supplied for food use,  $Q_f(t)$ , on the price of food,  $P(t)$ ,

as in the model described above with  $\lambda = 1$ , leading to the equilibrium equations for price and quantity:

$$P(t) = \frac{\alpha_d(t) - \alpha_s(t)}{\beta_d + \beta_s} \quad [10]$$

$$Q_f(t) = \frac{\alpha_d(t)\beta_s + \alpha_s(t)\beta_d}{\beta_d + \beta_s} \quad [11]$$

We now assume that the use of corn for ethanol production,  $Q_x(t)$ , causes a dominant supply shock for corn used directly and indirectly for food, so that

$$\alpha_s(t) \sim Q_f(t) \sim Q_t(t) - Q_x(t) \quad [12]$$

where  $Q_t(t)$  is the total amount of corn produced. In this model, a change in price would then be caused only by supply shocks. This does not imply that the supply and demand aside from corn ethanol production is static. For example, a growing world population creates a growing demand, but if this demand is met by a corresponding growing supply prices need not change. The total quantity demanded at equilibrium would then follow the shifts of the demand intercept, so that the difference  $Q_t(t) - \alpha_d(t) \approx Q_t(t_0) - \alpha_d(t_0)$  would not be time dependent. The assumption that ethanol is a dominant shock is equivalent to the assumption that the price without the ethanol production would be relatively constant. Substituting in Eq. 10 and dropping the time dependence for the total corn production and the demand intercept yields

$$Q_x(t) = (\beta_d + \beta_s)P(t) + Q_t - \alpha_d \quad [13]$$

The supply and demand model of Eq. 13 can be considered a quite general first order model of the food index as a function of many factors,  $P = P(f_i)$ , one of which is the amount of corn to ethanol conversion. We can perform a Taylor series expansion of such a generalized function with respect to its dependence on ethanol due to both direct and indirect effects. Even though the change in corn ethanol production is a large fraction of US corn production, we can consider an expansion to linear order of its effect on food prices generally. The total change in price,  $\Delta P$ , is then written as a sum over partial derivative relative to all factors and their change with respect to corn ethanol production:

$$\Delta P = \left( \frac{dP}{dQ_x} \right) Q_x = \sum_i \left( \frac{\partial P}{\partial f_i} \right) \left( \frac{\partial f_i}{\partial Q_x} \right) Q_x \quad [14]$$

where the reference price is for  $Q_x = 0$ . Comparing with the previous equation we see that this has the same behavior as a supply and demand model with an effective elasticity given by:

$$\beta_d + \beta_s = \left( \sum_i \left( \frac{\partial P}{\partial f_i} \right) \left( \frac{\partial f_i}{\partial Q_x} \right) \right)^{-1} \quad [15]$$

The approximation that is needed for validity of this expression is that the dominant shock in the agriculture and food system is due to the corn use for ethanol. The validity of this assumption may be enhanced by the cancellation of other effects that contribute to both increases and decreases in prices.

Thus, if the assumptions of the model are correct, the change in quantity of corn ethanol would be proportional to the change in food price. This implies that the time dependence of the corn used for ethanol and of the food price index should each have the same functional form. The existence of an ethanol production byproduct use for feed (distillers grain), which is a fixed proportion of the corn, does not influence the functional form. We test this hypothesis in Fig. 2, where we plot both the time dependence of corn ethanol and the FAO

food price index between 1999 and 2010. Values are normalized to range from 0 (minimum) to 1 (maximum) during this period in order to compare the functional forms of the two curves. If we exclude the 2007-2008 price peak, both curves can be accurately fit by quadratic growth ( $R^2$  values of 0.986 for food prices and 0.989 for ethanol fraction). The Pearson correlation of the two curves is  $\rho = 0.98$ .

This model differs from the supply-demand model described earlier in that here we consider the total value of the change in ethanol use (i.e.  $Q_x(t)$ ), and not just the surplus as reflected in reserves. The combination of the large change in food prices and the large change in the amount of grain used for ethanol production (over 15% of total global corn production), along with the proportionality we find between the two quantities, is strong evidence for a causal link between them.

**Section D: Dynamic Model of Speculators.** In this section we present a simple dynamic model of the role of trend-following speculators and their ability to cause deviations from equilibrium supply and demand prices. In the next section we will augment the model to incorporate the specific conditions of the commodity markets, the demand shock of corn to ethanol conversion discussed above, and investor shifting between markets.

Our model directly describes the possibility of speculators causing price deviations from equilibrium supply and demand. A progressive departure from equilibrium leads to supply and demand conditions increasingly countering that deviation. The interplay of these effects leads to the oscillations of bubble and crash dynamics.

We construct our speculator model starting from a supply and demand one. The price dynamics based upon supply and demand for a single commodity can be represented by [75]:

$$Q_d(t) = \alpha_d - \beta_d P(t) \quad [16]$$

$$Q_s(t) = \alpha_s + \beta_s P(t) \quad [17]$$

$$P(t+1) = P(t) + \gamma_0(Q_d(t) - Q_s(t)) \quad [18]$$

where  $Q_d(t)$  is the quantity demanded at time  $t$ ,  $Q_s(t)$  is the quantity supplied and  $P(t)$  is the price of the commodity. We assumed a linear relationship between quantity and price, and we replaced the equilibrium condition,  $Q_e = Q_d = Q_s$ , with Eq. 18, the Walrasian adjustment mechanism [76]:  $P$  rises if the demand exceeds supply and vice versa, where  $\gamma_0$  is the strength of the restoring force toward equilibrium. This is equivalent to a single first order difference equation in  $P$  [77],

$$P(t+1) + P(t)(k_{sd} - 1) = k_c, \quad [19]$$

where  $k_{sd} = \gamma_0(\beta_d + \beta_s)$  and  $k_c = \gamma_0(\alpha_d - \alpha_s)$ . This can be solved to give:

$$P(t) = (P_1 - P_e)(1 - k_{sd})^t + P_e \quad [20]$$

where  $(P_1 - P_e)$  is the initial deviation from the equilibrium and  $P_e = P_0 = k_c/k_{sd}$  the equilibrium price. This behavior is summarized in Figure 3, where  $k_{sd} < 1$  and  $Q_d$  and  $Q_s$  are displaced by a small percentage from their equilibrium value at  $t = 0$ , in order to simulate a supply/demand shock. Eq. 20 is similar to the solution of the classic Cobweb Model [78], with the difference that the term raised to the  $t_{th}$  power is proportional to the ratio of the supply and demand slopes,  $1 - k_{sd} = -\beta_s/\beta_d$ , and not to their sum. Therefore, as in the Cobweb Model, we can have convergence ( $k_{sd} < 2$ ) or divergence ( $k_{sd} > 2$ ) depending on the slope of the linear response of supply and demand to prices.

We now introduce the influence of trend-following speculators. If the price change of the commodity is positive in the previous time step, speculators are willing to buy a quantity  $\mu[P(t) - P(t-1)]$  of commodity, otherwise they sell  $\mu[P(t-1) - P(t)]$ . The quantity bought (sold) is added (subtracted) from the term  $(Q_d(t) - Q_s(t))$  in price setting Eq. 18. The result is a non-homogeneous second order difference equation in  $P$  of the type  $aP(t+1) + bP(t) + cP(t-1) = g$ , so that Eq. 19 becomes:

$$P(t+1) + P(t)(k_{sd} - k_{sp} - 1) + P(t-1)k_{sp} = k_c \quad [21]$$

where  $k_{sp} = \mu\gamma_0$ . The values of the coefficients are given in terms of both the supply and demand parameters and the speculator response parameter  $\mu$ . If prices are measured in units of  $k_c$ , Eq. 21 can be normalized to:

$$p(t+1) + p(t)(k_{sd} - k_{sp} - 1) + p(t-1)k_{sp} = 1 \quad [22]$$

where  $p(t) = P(t)/k_c$ .

Three cases have to be considered, depending on the value of the discriminant  $\delta = b^2 - 4ac$ . We again consider a small displacement from equilibrium at  $t = 0$ , so that  $P_0 = P_e$ .

#### Case 1: $\delta > 0$

If the discriminant is positive, there are two distinct roots for the characteristic equation of a second order difference equation, and Eq. 21 can be solved to give:

$$P(t) = \delta^{-1/2}(P_1 - P_e)(m_1^t - m_2^t) + P_e \quad [23]$$

where  $m_{1,2} = (-b \pm \delta^{1/2})/2$ . If both  $m_1$  and  $m_2$  lie between 0 and 1 in absolute value, then both  $m_1^t$  and  $m_2^t$  approach zero, and the solution converges exponentially. Otherwise the solution exponentially diverges.

#### Case 2: $\delta = 0$

If the discriminant is zero, then there is exactly one real root. The solution in this case is:

$$P(t) = (P_1 - P_e)(-b/2)^{t-1}t + P_e \quad [24]$$

Whether the behavior is convergent or divergent now depends just on the magnitude of  $b$ . However, the likelihood of the roots being exactly equal when dealing with economic data is extremely small.

#### Case 3: $\delta < 0$

If the discriminant is negative, the solution to Eq. 21 becomes:

$$P(t) = (-\text{sign}(b))^{t-1} \sqrt{k_{sp}^t} \left( \frac{P_1 - P_e}{\sqrt{k_{sp}}} \right) \frac{\sin(\theta t)}{\sin(\theta)} + P_e \quad [25]$$

where

$$\theta = \arcsin \sqrt{1 - \frac{b^2}{4k_{sp}}} \quad [26]$$

The behavior in this case is oscillating, with a period  $T = 2\pi/\theta$ . Whether  $P(t)$  converges to its equilibrium value (as in Fig. 4) or not (as in Fig. 6) depends on the growth factor  $k_{sp}$ . Given the necessary combinations of the four parameters of the supply-demand relationship  $(\alpha_s, \alpha_d, \beta_s, \beta_d)$ ,  $k_{sp}$  remains the only relevant parameter. We can distinguish the price dynamics behaviors of the model according to the values  $k_{sp}$  assumes when the discriminant is negative:

$k_{sp} = 0$   $P(t)$  decays exponentially to  $P_e$  (Figure 3)

$k_{sp} < 1$   $P(t)$  converges to  $P_e$  with damped oscillations (Figure 4)

$k_{sp} = 1$   $P(t)$  oscillates around  $P_e$  (Figure 5)

$k_{sp} > 1$   $P(t)$  diverges with amplified oscillations (Figure 6)

The behavior of the system is summarized in Fig. 7, where the phase diagram of the model is plotted as a function of its two main parameters:  $k_{sd}$ , the fundamental supply-demand contribution to price dynamics, and  $k_{sp}$ , the speculator contribution. The blue region on the top left corner is the stable region of the system, where price converges to its equilibrium value, while the red region around it defines the domain of price divergence.

The difference between the dark blue region and the light blue one is the sign of the discriminant. When  $\delta$  is negative (light blue region), we have the damped sinusoidal behavior shown in Fig. 4; when  $\delta$  is positive, we can either have the exponential decay shown in Fig. 3 (left-side dark blue triangle in the phase diagram) or a damped oscillating behavior (right-side dark blue triangle). The two triangles are separated on the  $x$ -axis ( $k_{sp} = 0$ ) by  $k_{sd} = 1$ : in this case in fact,  $\delta = (k_{sd} - 1)^2$  and whether the behavior is oscillating or monotonic depends on the sign of the quantity in parentheses. On the other hand, if  $k_{sd} > 2$  the supply and demand elasticities are too high,  $\delta > 1$  and the price diverges (red region).

The question of whether speculators stabilize or destabilize prices has been the subject of a large body of literature [79], going back to Milton Friedman, who said ‘‘People who argue that speculation is generally destabilizing seldom realize that this is largely equivalent to saying that speculators lose money, since speculation can be destabilizing in general only if speculators on average sell when the [commodity] is low in price and buy when it is high.’’ [80]. Our simple model provides a quantitative assessment of the role of speculators: if we follow the arrow on the phase diagram from the  $x$ -axis at  $k_{sd} = 3$  and  $k_{sp} = 0$ , for example, we see how increasing the effect of speculators may actually stabilize the system at first (from point A to point B), but eventually the system leaves the convergent behavior and becomes unstable again. Therefore a small amount of speculation may help prices to converge to their equilibrium value, but if the market power of speculators is too great they will have a destabilizing effect on the price dynamics. This holds true as long as the model parameter  $k_{sd} < 4$ ; otherwise speculators are never able to stabilize the market.

The condition for speculator induced instability of a supply and demand equilibrium,  $k_{sp} \geq 1$ , can be understood by recognizing that at  $k_{sp} = 1$  the additional speculator activity motivated by a price change is precisely enough to cause the same price change in the next period of time. Such momentum of the price is quite reasonably the condition for speculator induced bubbles and crashes. Supply and demand restoring forces are then responsible for the extent of the oscillatory behavior.

The concepts of equilibrium and trend following are manifest in trader strategies that are ‘‘fundamental’’ and ‘‘technical’’ [81]. Fundamental investing relies upon a concept of target price, the expected value. Investors estimate the target price based on supply and demand and use it as a guide to buy or sell. Technical investing considers various patterns in the price time series, the primary of which is the trend of prices itself, which sets direction but not value, except in relation to that pattern. More generally, in a technical strategy,

a shift by a constant amount of the price time series would not affect investor decisions to buy or sell. Our model maps these two types of investing behavior onto the first two possible terms in a series expansion of the equation for price change in terms of the prices at previous times. These two terms represent respectively the two different types of investing behavior. The first term has a price difference from a reference (the equilibrium price), and the second term has the difference of sequential prices in the past. The equilibrium price in the first term is the average over the expected target price of all fundamental traders. Even with, or rather because of, a large diversity of individual trader strategies, an aggregation over them can be expected to leave these two terms dominant. Aggregation incorporates the multiple tendencies of individuals, and the diversity across individuals. The aggregate over their decisions has these two primary price impacts.

Finally, we consider the mechanisms by which trend following speculators are related to rational expectations about future prices and their impact on current prices and inventory. In the analysis of inventory changes over time in the “supply of storage” model [82, 83], it has been shown that inventories increase when future prices are expected to rise. The inventory change is then achieved by a departure of prices from supply and demand equilibrium at that time. However, this is due to a *future* supply and demand change. In effect this analysis is the basis of all trading that achieves price stability over time due to inventory. Thus, if there is a seasonal supply of grain, the storage of that grain for future use is motivated by a difference in the timing of demand, and prices are adjusted to the demand across time. Given a temporary expected higher demand or lower supply at a time in the future, prices may be adjusted at the current time to sell less grain in order to keep the grain for the future.

Trend following reflects the assumption, as indicated in the speculator model, that extrapolation is a valid representation of expected future prices (including the possibility that the trends represent actual changes in supply and demand). Under these conditions it is rational to increase prices in order to reserve inventory for the future prices, causing a departure from equilibrium. This increase in price caused by the expected future prices then leads to a more rapid increase in price. Absent a way to distinguish the increase in price that is due to the desire to adjust inventory from other increases in price, we now have a recursive process. This is exactly the problem of recursive logic leading to multiple possible truths or self-contradicting paradox. Interpreted as a dynamical system, because of iterative rather than synchronous steps, the result is the dynamics of bubble and crash behavior described above. In particular, the trend following trader assumption of extrapolated trends predicting future price increases is inherently (globally) irrational due to its recursive tendency toward infinite or zero prices, only moderated by supply and demand traders. This does not imply that it is not locally rational, i.e. contextually or at a particular time it is a rational behavior, but any attempt to generalize local to global rationality encounters analytic problems. The absence of rationality is manifest *a posteriori* in empirical data by the occurrence of crashes after bubbles. Our analysis, however, shows that an empirical crash is not necessary to prove irrationality of trend following because of its inherent paradoxical nature. Nevertheless, as we found in our model, a limited amount of trend following can improve market behavior, in essence because trend following has a limited degree of validity in rational prediction of future prices. We might say that a small amount of an irra-

tional behavior can contribute to increased rational collective action.

As discussed below, using food price data, we find the current world market to be at point C in the phase diagram. This is a region where the price diverges with amplified oscillations. In this domain, speculation can strongly destabilize the supply and demand equilibrium price.

**Section E: Food Price Model: Speculators and Ethanol Demand.** We construct an explicit model of price dynamics to compare to the food price index. Since our analysis has eliminated all supply and demand factors except ethanol conversion as a major shock, and the only other factor of known relevance is speculators, our model is constructed in order to represent these two effects. We build the simplest possible model of these two factors, minimizing the number of empirically adjustable parameters, and find a remarkably good fit between theory and empirical data.

We combine the ethanol model and the speculator model described in the two previous sections. We consider only the FAO food price index to characterize the combined effect on food prices. Because a majority of financial holdings in agricultural futures markets are now due to commodity index funds [84], it is reasonable to model aggregate effects of speculators on commodities rather than on individual ones separately. Similarly, corn ethanol conversion impacts food prices through a number of parallel mechanisms. The mutual influences of grain prices through substitution and replacement, as well as geographical heterogeneity of individual countries or regions, require detailed modeling that need not be done at a first level of representation.

Starting from the supply and demand model with Walrasian adjustment

$$P(t+1) = k_c + [1 - k_{sd}]P(t) \quad [27]$$

we include the effects of assuming a dominant ethanol conversion demand shock described above. Since the equilibrium price is given by  $P_e = k_c/k_{sd}$ , we constrain  $k_c$  to be:

$$k_c(t) = (a + bt^2)k_{sd} + b(2t + 1) \quad [28]$$

where  $a$  and  $b$  are the coefficients of the corn ethanol model obtained above. The factor  $(a + bt^2)$  is the time-dependent equilibrium price from the corn ethanol model. The additional term  $b(2t + 1)$  corrects for the lag in update of the dynamic model with respect to the equilibrium model, causing the dynamic model to track the equilibrium model price rather than a price that is lower, i.e. lagging in time, during the initial period. This term does not substantially affect the overall fit of the speculator and ethanol model.

We incorporate the effect of trend following speculators as in the previous section by adding a term  $k_{sp}[P(t) - P(t-1)]$  which interacts with the price dynamics due to the supply and demand terms. The last step in our construction of the speculator model is to add the effect of alternative investment markets on the price of the commodity. We assume that when the price change of an alternative investment is positive in the previous time step, speculators sell a quantity  $\mu_i[P_i(t) - P_i(t-1)]$  of commodity contracts, where  $P_i(t)$  is the price at time  $t$  of investment  $i$  and  $\mu_i < 0$ , in order to shift part of their capital to the new market. This sale of commodities competes against the purchase of commodities given by  $\mu_i[P_i(t-1) - P_i(t)]$ , representing the maximum profit seeking behavior of speculators who transfer capital between markets. In summary, Eq. 21

becomes:

$$\begin{aligned}
 P(t+1) &= k_c(t) + [1 - k_{sd}]P(t) + k_{sp}[P(t) - P(t-1)] \\
 &+ \sum_{i=1}^N k_i[P_i(t) - P_i(t-1)] \quad [29]
 \end{aligned}$$

where  $N$  is the number of alternative investments taken into account, and  $k_i = \mu_i \gamma_0$  are the alternative investment coupling constants. The model has effectively  $N + 3$  fitting parameters: two deriving from supply and demand considerations ( $k_c$  and  $k_{sd}$ ) and  $N + 1$  deriving from trend-following considerations.

In Fig. 8, we show the best fit of this model to the FAO Food Price Index. We start the fit in 2007, when speculators presumably started moving their investments from the stock market to other markets, as suggested by the bubble dynamics of Fig. 3. The date of the start, May 2007, is chosen for best fit. A more gradual increase in investor interest would be more realistic and represent the data more closely, but the simple model using a single date for investor interest is sufficient. The alternative markets we consider besides commodities are equities (using the S&P500 Index time series) and bonds (using the US 10-year treasury note price time series), which have peaks right before and right after the peak in the commodity time series (top panel of Fig. 8) so that  $N = 2$ .

The resulting price curve is constructed directly from the model using only the adjustment of four model parameters ( $k_{sd}$ ,  $k_{sp}$ , and the two market coupling parameters,  $k_1$  and  $k_2$ ) and the alternative market prices as input. The two large peaks are precisely fit by the model, as is the intermediate valley and smaller intermediate peak. The stock market plays a key role in the fit due to a shift of investment capital in 2009 in response to a stock market increase. The bond market plays a smaller role and the coefficient of coupling between the commodity and bond markets is small. The parameters that are obtained from the fitting ( $k_{sd}$ ,  $k_{sp}$ ) are shown as point C in Fig. 7. The point lies in the unstable region of the system, with the caveat that we fit the Food Price Index with Eq. 29 that includes the alternative markets but we plot the phase diagram for Eq. 21 without those markets.

Our results for the Food Price Index yield parameters that can be compared with expectations about speculator influence on commodity markets. In particular, the value of  $k_{sp} = 1.29$  is consistent with a speculator volume that can move prices 30% more than the price change that is found in the previous time.

The value of the supply and demand parameter  $k_{sd} = 0.098$  combines with the speculator behavior to yield a bubble and crash cycle of  $2\pi/\theta = 23.6$  months (see Eq. 26), almost exactly two years, consistent with a single year of price increases. This corresponds to the natural assumption of an annual cycle for the maturation of futures contracts for delivery that impact on actual supply and demand. The maturation of such contracts leads to increases in inventories and thus a restoring force toward supply and demand equilibrium. Furthermore, according to this analysis, we predict an increase in inventories of grains starting at the peak of the speculative bubble, one year after the departure from equilibrium prices. As shown in Fig. 4, this is consistent with the available data on observed inven-

ories of grains [70]. In particular, the inventories increased from September 2008 to September 2009.

The result that our dynamic speculator model is able to fit the FAO Food Price Index and that the supply-demand model described above is not able to do so is consistent with the hypothesis that speculators played an important role in determining food prices. In conjunction with the other evidence for speculator involvement (see main text), our quantitative model provides specific evidence not just for a role of speculators, but for the extent of impact of speculators on the food and other commodity markets.

## Section F: Supply and demand shock without speculation and speculation without a supply and demand shock.

In this section we consider two models testing whether a simpler model than that used in the main text can match the dynamics of food prices. These models remove either supply and demand or speculation, leaving just the other. We can consider these as alternative null models that validate the need for both supply and demand and speculation.

First we consider the possibility of a supply and demand model without speculation. We note that the ethanol shock by itself is insufficient, but perhaps other supply and demand factors may contribute. We thus construct a model based upon surplus of production over demand. Since this data is naturally available for individual commodities rather than food as an aggregate quantity, we consider this for each of four food commodities. We use Eq. 8 to fit the price time series of a given commodity  $P(t)$ , and Eq. 9 to fit its consumption,  $Q_d(t)$ . The only input into the model is the surplus  $S(t)$ , estimated from inventories provided by the US Department of Agriculture [70], and three parameters are used for fitting the price and consumption: the transformation parameter  $\lambda$ , one slope (either  $\beta_d$  or  $\beta_s$ ) and the initial value of one of the intercepts (either  $\alpha_d(0)$  or  $\alpha_s(0)$ ). The other slope/intercept is determined by setting initial values to empirical data,  $P_e(0) = P(0)$  and  $Q_e(0) = Q(0)$ . Empirical price data was adjusted for the US consumer price index, so that  $P_e(t, \lambda)$  represents constant prices. Fig. 1 shows that this simple model is able to capture most features of commodity price fluctuations for wheat, corn, rice and sugar, but it fails to reproduce the 2006-2008 spike. Instead, the model predicts price peaks starting from 2000-2002. However, in order to fit the spike in the price time series, the model creates a jump in demand which does not occur in the actual data, as demonstrated by the poor fit of the consumption time series. Absent a mechanism for shifting of price increases by a time delay of 3-4 years, distinct causes of the supply-demand change in 2000-2002 and price peaks of 2006-2008 are necessary. Policy-based reductions in reserves are a possible explanation of the changes in 2000-2002 [7, 72]. Commodity speculation can account for the peaks in 2007-8 (explained further below).

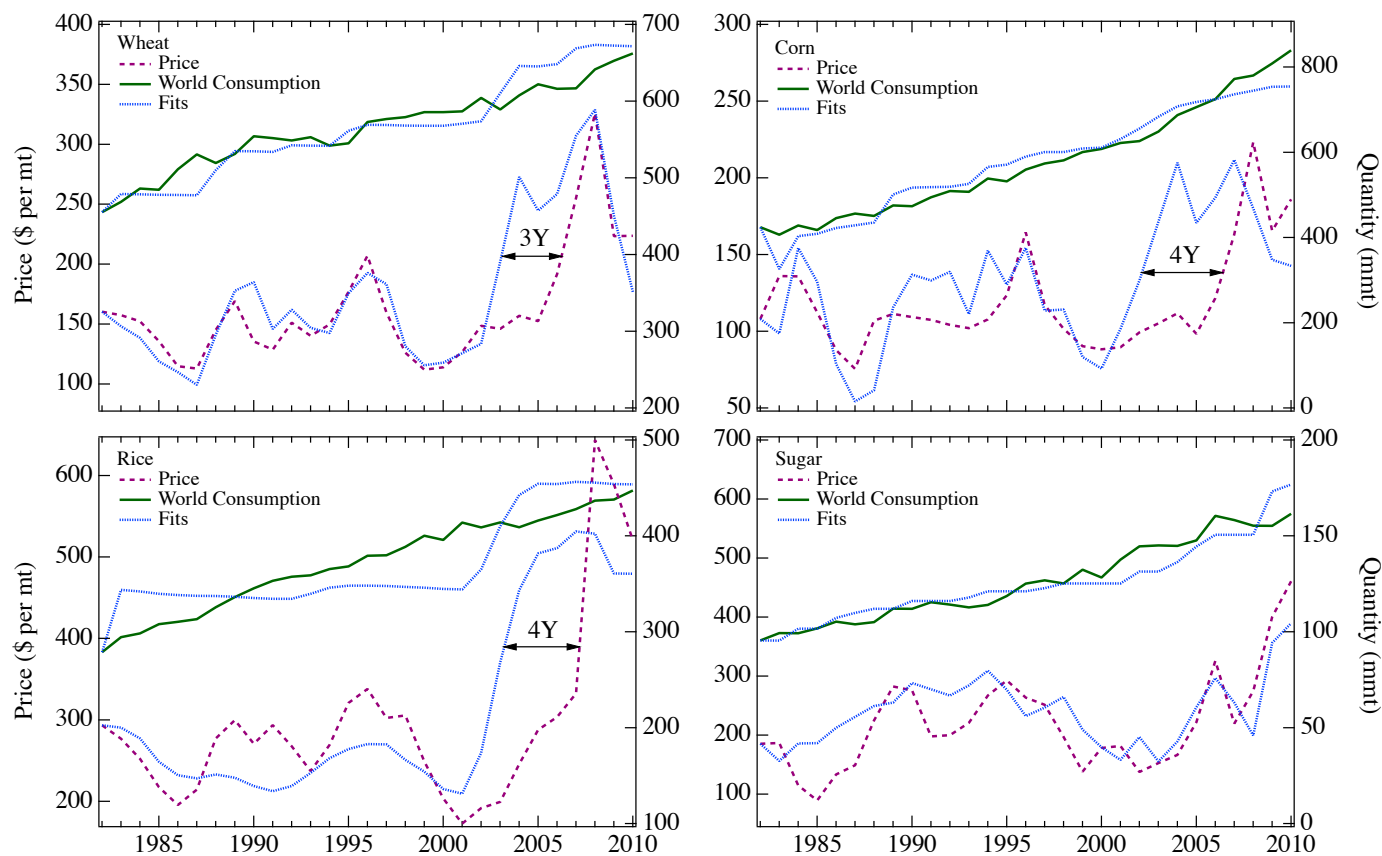
Second we consider fitting inflation adjusted food prices without a supply and demand shock, i.e. price changes away from a fixed reference equilibrium price are driven by speculative band wagon effects. The results shown in Figure 9 imply that the speculative behavior alone is unable to account for the underlying trend in food prices.

1. Timmer C P (October 2008) Causes of high food prices. ADB Economics Working Paper Series 128. (Asian Development Bank, Manila). Available at <http://www.adb.org/publications/causes-high-food-prices>. Accessed October 2, 2015.
2. Lustig N (2008) Thought for food: The causes and consequences of soaring food prices. Shapiro Lecture. Available at <http://www.slidefinder.net/t/thought-food-causes-consequences-soaring/17529506>. Accessed November 21, 2011.
3. Baffes J, Haniotis T (2010) Placing the 2006/2008 commodity price boom into perspective. (World Bank, Washington, DC). Available at [https://ipcc-wg2.gov/njlite\\_download2.php?id=8256](https://ipcc-wg2.gov/njlite_download2.php?id=8256). Accessed October 2, 2015.
4. Piesse J, Thirtle C (2009) Three bubbles and a panic: An explanatory review of recent food commodity price events. *Food Policy* 34(2):119-129.
5. Fuglie K O (2008) Is a slowdown in agricultural productivity growth contributing to the rise in commodity prices? *Agric Econ* 39(s1):431-441.

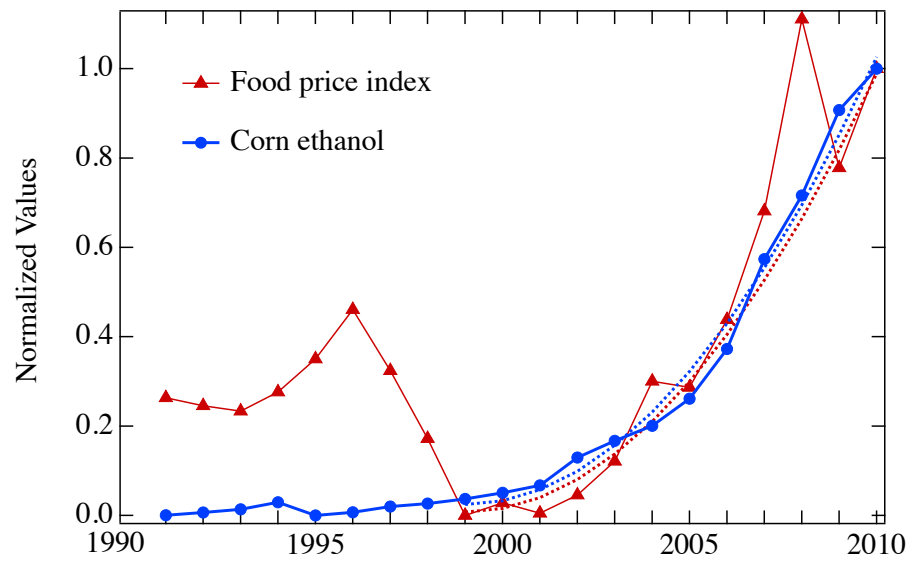
6. Gilbert G L (2010) How to understand high food prices. *J Agric Econ* 61(2):398-425.
7. Abbott P, de Battisti A B (2009) Recent global food price shocks: Causes, consequences and lessons for African governments and donors. *J Afr Econ* 20(1):112-162.
8. Al-Riffai P, Dimaranan B, Laborde D (2010) Global trade and environmental impact study of the EU biofuels mandate. ATLAS Consortium. (OER Africa, Nairobi). Available at <http://trade.ec.europa.eu/doclib/docs/2010/march/tradoc.145954.pdf>. Accessed October 8, 2015.
9. De Gorter H, Just D R (2010) The social costs and benefits of biofuels: The intersection of environmental, energy and agricultural policy. *Appl Econ Perspect Pol* 32(1):4-32.
10. Benson T, Mugarura S, Wanda K (2008) Impacts in Uganda of rising global food prices: The role of diversified staples and limited price transmission. *Agric Econ* 39(s1):513-524.
11. Alexandratos N (2008) Food price surges: Possible causes, past experience, and longer term relevance. *Popul Dev Rev* 34(4):663-697.
12. Meyers W H, Meyer S (2008) Causes and implications of the food price surge. FAPRI-MU Report 12-08. (FAPRI-MU, Columbia, MO). Available at <http://www.fapri.missouri.edu/wp-content/uploads/2015/02/FAPRI-MU-Report-12-08.pdf>. Accessed October 2, 2015.
13. Beddington J, Soc R (2010) Food security: Contributions from science to a new and greener revolution. *Phil Trans R Soc B* 365(1537):61-71.
14. Cooke B, Robles M (2009) Recent food prices movements: A time series analysis. IFPRI Discussion Paper 00942. (IFPRI, Washington, DC). Available at <http://cdm15738.contentdm.oclc.org/utills/getfile/collection/p15738coll2/id/28658/filename/28659.pdf>. Accessed October 2, 2015.
15. Clapp J, Helleiner E (2010) Troubled futures? The global food crisis and the politics of agricultural derivatives regulation. *Rev Int Pol Econ* 19(2):181-207.
16. Timmer C P (2009) Rice price formation in the short run and the long run: The role of market structure in explaining volatility. Center for Global Development Working Paper Series 172. (Center for Global Development, Washington, DC). Available at <http://www.cgdev.org/files/1422136.file.Timmer.Rice.Price.FINAL.pdf>. Accessed October 2, 2015.
17. Hochman G, Sexton S E, Zilberman D D (2008) The economics of biofuel policy and biotechnology. *J Agric Food Ind Org* 6(8):1-22.
18. Dewbre J, Giner C, Thompson W, Von Lampe M (2008) High food commodity prices: Will they stay? Who will pay? *Agric Econ* 39(s1):393-403.
19. Headey D D (2010) Rethinking the global food crisis: The role of trade shocks. IFPRI Discussion Paper 00958. (IFPRI, Washington, DC). Available at <http://cdm15738.contentdm.oclc.org/utills/getfile/collection/p15738coll2/id/831/filename/832.pdf>. Accessed October 2, 2015.
20. Khosla V (2008) Biofuels: Clarifying assumptions. *Science* 322(5900):371-374.
21. Abbott P (2009) Development dimensions of high food prices. OECD Food, Agriculture and Fisheries Working Papers 18. (OECD, Paris). Available at <http://www.oecd.org/tad/agricultural-trade/45013572.pdf>. Accessed October 8, 2015.
22. Sarris A (2009) Evolving structure of world agricultural trade and requirements for new world trade rules. Expert Meeting on How to Feed the World in 2050. (FAO, Rome). Available at <ftp://ftp.fao.org/docrep/fao/012/ak979e/ak979e00.pdf>. Accessed October 2, 2015.
23. Harrison R W (2009) The food versus fuel debate: Implications for consumers. *J Agric Applied Econ* 41(2):493-500.
24. Searchinger T (2009) Government policies and drivers of world biofuels, sustainability criteria, certification proposals and their limitations. Biofuels: Environmental Consequences and Interactions with Changing Land Use, eds Howarth R W, Bringezu S (SCOPE, Gumpersbach, Germany), pp. 37-52.
25. Lo Y-T, Chang Y-H, Lee M-S, Wahlqvist M L (2009) Health and nutrition economics: Diet costs are associated with diet quality. *Asia Pac J Clin Nutr* 18(4):598-604.
26. Tyner W E (2010) The integration of energy and agricultural markets. *Agric Econ* 41(s1):193-201.
27. Che X, Huang H, Khanna M, Önal H (2011) Meeting the mandate for biofuels: Implications for land use, food and fuel prices. NBER Working Paper 16697. (NBER, Cambridge, MA). Available at <http://www.nber.org/papers/w16697>. Accessed October 8, 2015.
28. Khanna M, Hochman G, Rajagopal D, Sexton S, Zilberman D (2009) Sustainability of food, energy and environment with biofuels. CAB reviews: Perspectives in agriculture, veterinary science. *Nutr Nat Resources* 4(28):1-10.
29. Saghaian S H (2010) The impact of the oil sector on commodity prices: Correlation or causation? *J Agric Applied Econ* 42(3):477-485.
30. Wiggins S, Keats S, Vigneri M (2010) Impact of the global financial and economic situation on agricultural markets and food security. ODI Working Papers 314. (ODI, London). Available at <http://www.odi.org/sites/odi.org.uk/files/odi-assets/publications-opinion-files/5780.pdf>. Accessed October 2, 2015.
31. Armah P, Archer A, Phillips G C (2009) Drivers leading to higher food prices: Biofuels are not the main factor. *In Vitro Cell Dev Biol Plant* 45(3):330-341.
32. Baek J, Koo W W (2009) Analyzing factors affecting US food price inflation. International Agricultural Trade Research Consortium Analytic Symposium. (IATRC, Seattle). Available at <http://iatrc.software.umn.edu/activities/symposia/2009Seattle/Seattle-BaekKoo.pdf>. Accessed October 2, 2015.
33. Chantret F, Gohin A (2009) The long-run impact of energy prices on world agricultural markets: The role of macro-economic linkages. International Agricultural Trade Research Consortium Analytic Symposium. (IATRC, Seattle). Available at <http://iatrc.software.umn.edu/activities/symposia/2009Seattle/Seattle-ChantretGohin.pdf>. Accessed October 2, 2015.
34. Bureau J C, Guyomard H, Jacquet F, Tréguer D (2010) European biofuel policy: How far will public support go? Handbook of Bioenergy Economics and Policy, eds Khanna M, Scheffran J, Zilberman D (Springer, New York), pp. 401-425.
35. Sarris A (2009) Evolving structure of world agricultural market instability and requirements for new world trade rules. The Evolving Structure of World Agricultural Trade, eds Sarris A, Morrison J (FAO, Rome), pp. 11-38.
36. Doering O C, Tyner W E (2009) US and international policies affecting liquid biofuels' expansion and profitability. *Int J Biotechnol* 11(1-2):150-167.
37. Jansen M, von Uexkull E (2010) Trade and employment in the global crisis. (International Labor Office, Geneva). Available at <http://www.ilo.org/wcmsp5/groups/public/@dgreports/@dcomm/@publ/documents/publication/wcms.141911.pdf>. Accessed October 8, 2015.
38. Martin M A (2010) First generation biofuels compete. *N Biotechnol* 27(5): 596-608.
39. Pender J (2009) The world food crisis, land degradation and sustainable land management: Linkages, opportunities, and constraints. (TerrAfrica Partnership, Midrand, South Africa). Available at <http://blengrafix.com/terrAfrica/wp-content/uploads/files/FoodCrisis&Land-Full.eng.pdf>. Accessed October 8, 2015.
40. Orden D (2010) Recent macroeconomic dynamics and agriculture in historical perspective. *J Agric Applied Econ* 42(3):467-476.
41. Timilsina G R, Shrestha A (2010) How much hope should we have for biofuels? *Energy* 36(4):2055-2069.
42. Kwon D-H, Koo W W (2009) Price transmission channels of energy and exchange rate on food sector: A disaggregated approach based on stage of process. Agriculture & Applied Economics Association, Annual Meeting 2009. (AAEA, Milwaukee, WI). Available at <http://ageconsearch.umn.edu/bitstream/49334/2/AAEA.2009.Energy.pdf>. Accessed October 2, 2015.
43. Bouet A, Corong E (2009) Regional trade cooperation and food prices: An assessment for South Asian Free Trade. (IFPRI, Washington, DC). Available at <https://www.gtap.agecon.purdue.edu/resources/download/4508.pdf>. Accessed November 21, 2011.
44. Hochman G, Rajagopal D, Timilsina G R, Zilberman D (2014) Quantifying the causes of the global food commodity price crisis. *Biomass and Bioenergy* 68(1):106-114.
45. Amponsah W A (2009) Food insecurity and other economic development challenges facing African countries: Are they caused only by commodity price volatility? International Agricultural Trade Research Consortium, Analytic Symposium. (IATRC, Seattle). Available at <http://iatrc.software.umn.edu/activities/symposia/2009Seattle/Seattle-Amponsah.pdf>. Accessed October 2, 2015.
46. Mondal A, Koo C M, Kim W J (2011) Oil shocks and the world rice market puzzle: A structural VAR analysis. *Korea World Econ* 12(2):281-325.
47. Tyner W E (2010) What drives changes in commodity prices? Is it biofuels? *Biofuels* 1(4):535-537.
48. Ahrens H (2010) The world food crisis: Questions of economic theory and contemporary practices. *Vestnik BSAU* 4:78-84. Available at <http://vestnik.bsau.ru/netcat.files/File/VESTNIK/4-2010/16.pdf>. Accessed October 2, 2015.
49. Searchinger T (2009) Evaluating biofuels. Brussels Forum Paper Series. (The German Marshall Fund of the United States, Washington, DC). Available at <http://rsb.org/pdfs/documents.and.resources/Brussels-Forum-Paper-Searchinger-2009.pdf>. Accessed October 2, 2015.
50. Timilsina G R, Shrestha A (2010) Biofuels: Markets, targets and impacts. World Bank Policy Research Working Paper 5364. (World Bank, Washington, DC). Available at <https://openknowledge.worldbank.org/bitstream/handle/10986/3848/WPS5364.pdf>. Accessed October 2, 2015.
51. Wright B, Cafiero C (2010) Grain reserves and food security in MENA countries. (World Bank, Washington, DC). Available at <http://siteresources.worldbank.org/DEC/Resources/84797-1288208580656/7508096-1288208619603/Wright.Grain.Reserves.and.Food.Security.in.MENA.Countries.PAPER.pdf>. Accessed October 2, 2015.
52. Rutten M M, Chant L J, Meijerink G W (2011) Sit down at the ballgame: How trade barriers make the world less food secure. *Food Policy* 38(1):1-10.
53. Rajcaniova M, Pokrivca J (2010) What is the real relationship between biofuels and agricultural commodities? Available at <http://www.pulib.sk/elpub2/FM/Kotulic13/pdf.doc/08.pdf>. Accessed October 2, 2015.
54. Rajagopal D, Zilberman D (2010) On environmental lifecycle assessment for policy selection. UCLA Institute of the Environment and Sustainability WPS 2. (UCLA, Los Angeles). Available at <http://escholarship.org/uc/item/39k9h976>. Accessed October 2, 2015.
55. Headey D D, Malaiyandi S, Fan S (2009) Navigating the perfect storm. IFPRI Discussion Paper 00889. (IFPRI, Washington, DC). Available at <http://ebrary.ifpri.org/cdm/ref/collection/p15738coll2/id/26146>. Accessed October 2, 2015.
56. Simelton E (2010) Don't we all want good weather and cheap food? Changing Climates, Earth Systems, and Society, ed Dodson J (Springer, Dordrecht, Netherlands), pp. 201-215.
57. Abbott P (2010) Stabilisation policies in developing countries after the 2007-08 food crisis. (OECD, Paris). Available at <http://www.oecd.org/tad/agricultural-policies/46340396.pdf>. Accessed October 8, 2015.
58. Elliott K A (2009) US biofuels policy and the global food price crisis. The Global Food Crisis: Governance Challenges and Opportunities, eds Clapp J, Cohen M J (Wilfrid Laurier University, Waterloo, Ontario), pp. 59-75.
59. Rismiller C W, Tyner W E (2009) Cellulosic biofuels analysis: Economic analysis of alternative technologies. Working Paper 09-06. (Purdue University, West Lafayette, IN). Available at <http://ageconsearch.umn.edu/bitstream/53583/2/09-06.pdf>. Accessed October 8, 2015.



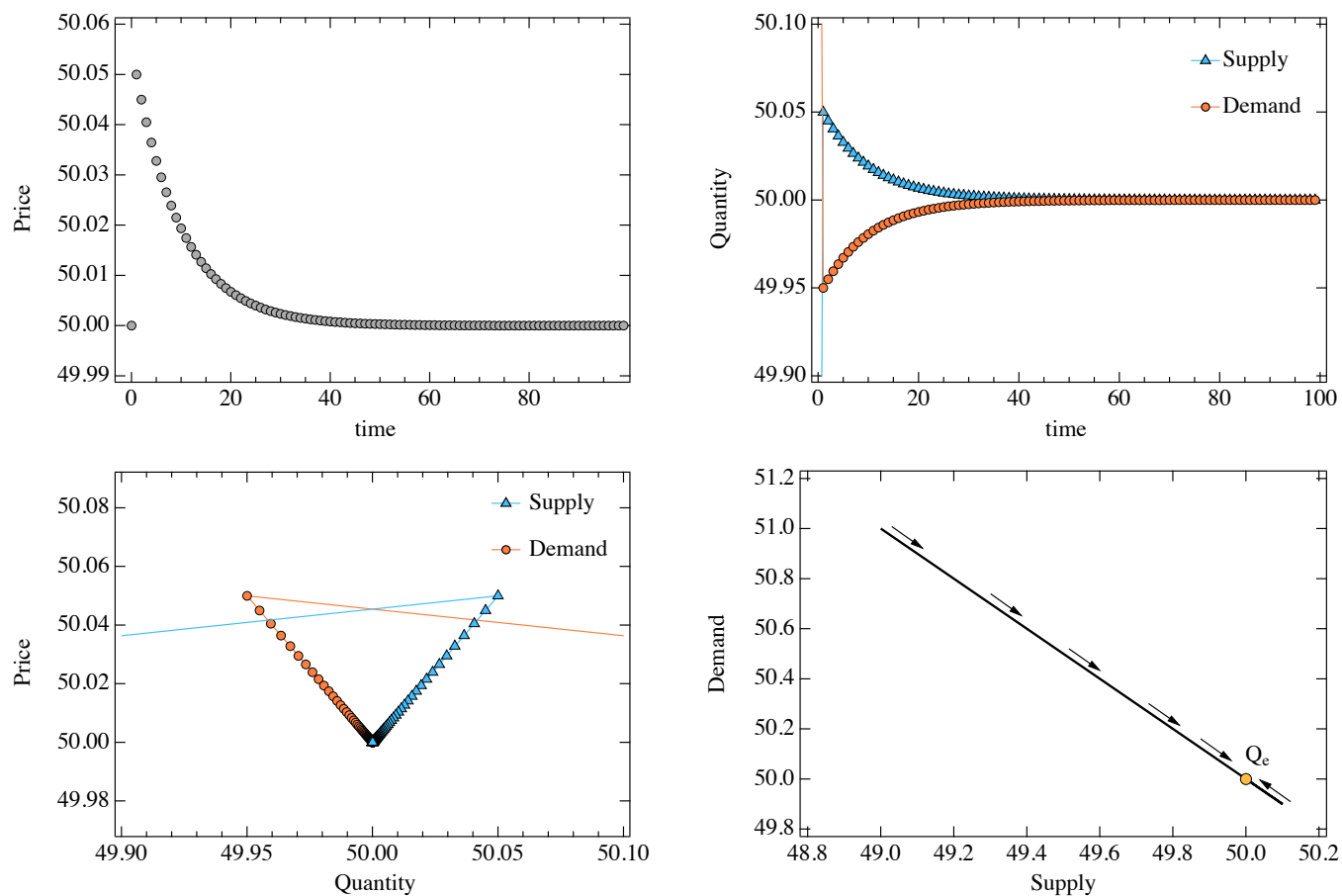
60. Singh M (September 26, 2008) Address at 63rd session of UN General Assembly. Available at <http://www.un.org/ga/63/generaldebate/pdf/india.en.pdf>. Accessed November 21, 2011.
61. Perry G M, Gopinath M, Jaeger W, Sorte B, Egelkraut T M (2009) Biofuel production and consumption in the United States: Some facts and answers to common questions. (Oregon State University, Corvallis, OR). Available at <http://www.researchgate.net/publication/268340022.Biofuel.Production.and.Consumption.in.the.United.States.Some.Facts.and.Answers.to.Common.Questions.Biofuel.Production.and.Consumption.in.the.United.States.Some.Facts.and.Answers.to.Common.Questions.Executive.Summary>. Accessed October 8, 2015.
62. Onour I (2010) Is the high crude oil price cause the soaring global food prices? Working Paper 1001. (Arab Planning Institute, Safat, Kuwait). Available at <http://www.researchgate.net/publication/242538583.Is.the.high.crude.oil.prices.cause.the.soaring.global.food.prices>. Accessed October 8, 2015.
63. Clements K W, Fry R (2006) Commodity currencies and currency commodities. (University of Western Australia, Crawley, Australia). Available at <http://msc.uwa.edu.au/?f=147001>. Accessed October 8, 2015.
64. Spanos A, Hendry D F, Reade J J (2008) Linear vs. log-linear unit-root specification: An application of mis-specification encompassing. *Oxford B Econ Stat* 70(s1):829-847.
65. Breimyer H F (1961) Demand and prices for meat: Factors influencing their historical development. Technical Bulletin 1253. (USDA, Washington, DC). Available at <http://naldc.nal.usda.gov/naldc/download.xhtml?id=CAT87201196&content=PDF>. Accessed October 8, 2105.
66. Hughes J E, Knittel C R, Sperlin D (2006) Evidence of a shift in the short-run price elasticity of gasoline demand. *Energy J* 29(1):113-134.
67. Hassan Z A, Katz L (1975) The demand for meat in Canada. *Canadian J Agric Econ* 23(1):53-63.
68. Kulshreshtha S N (1979) Functional form specification in the quarterly demand for red meats in Canada. *Western J Agric Econ* 4(2):89-97.
69. Box G E P, Cox D R (1964) An analysis of transformations. *J R Stat Soc B* 26(2):211-252.
70. United States Department of Agriculture Foreign Agricultural Service (2011) Production, supply and distribution online. Available at <http://apps.fas.usda.gov/psdonline/>. Accessed November 21, 2011.
71. Index Mundi (2011) Commodity prices. Available at <http://www.indexmundi.com/commodities/>. Accessed November 21, 2011.
72. Huang J, Qiu H, Rozelle S (2008) More pain ahead for China's food prices. *Far Eastern Econ Rev* 171(5):8-13.
73. United States Department of Agriculture (2011) World agricultural supply and demand estimates (WASDE) 493. (USDA, Washington, DC). Available at <http://usda.mannlib.cornell.edu/usda/waob/wasde/2010s/2011/wasde-04-08-2011.pdf>. Accessed October 8, 2015.
74. Fortenbery T R, Park H (2008) The effect of ethanol production on the U.S. national corn price. Staff Paper No. 523. (University of Wisconsin, Madison, WI). Available at <https://www.aae.wisc.edu/pubs/sps/pdf/stpap523.pdf>. Accessed October 8, 2015.
75. Ferguson B S, Lim G C (1998) Introduction to Dynamic Economic Models (Manchester University, Manchester).
76. McDonald I M (1980) On the comparison of the stability implications of Marshallian and Walrasian adjustment schemes: Note. *Am Econ Rev* 70(4):829-833.
77. Hamilton J D (1994) Time Series Analysis (Princeton University Press, Princeton, NJ).
78. Ezekiel M (1938) The cobweb theorem. *Q J Econ* 52(2):255-280.
79. Hart O D, Kreps D M (1986) Price destabilizing speculation. *J Pol Econ* 94(5):927-952.
80. Friedman M (1953) The case for flexible exchange rates. *Essays in Positive Economics*, ed Friedman M (University of Chicago, Chicago), pp. 157-203.
81. LeBaron D, Vaitilingam R (2002) Dean LeBaron's Treasury of Investment Wisdom (John Wiley and Sons, New York).
82. Working H (1949) The theory of price of storage. *Am Econ Rev* 39(6):1254-1262.
83. Zulauf C R, Zhou H, Roberts M C (2005) Updating the estimation of the supply of storage model. (Ohio State University, Columbus, OH). Available at <http://ageconsearch.umn.edu/bitstream/19122/1/sp05zu01.pdf>. Accessed October 8, 2015.
84. Worthy M (2011) Broken markets: How financial market regulation can help prevent another global food crisis. (World Development Movement, London). Available at <http://www.globaljustice.org.uk/sites/default/files/files/resources/broken-markets.pdf>. Accessed October 2, 2015.



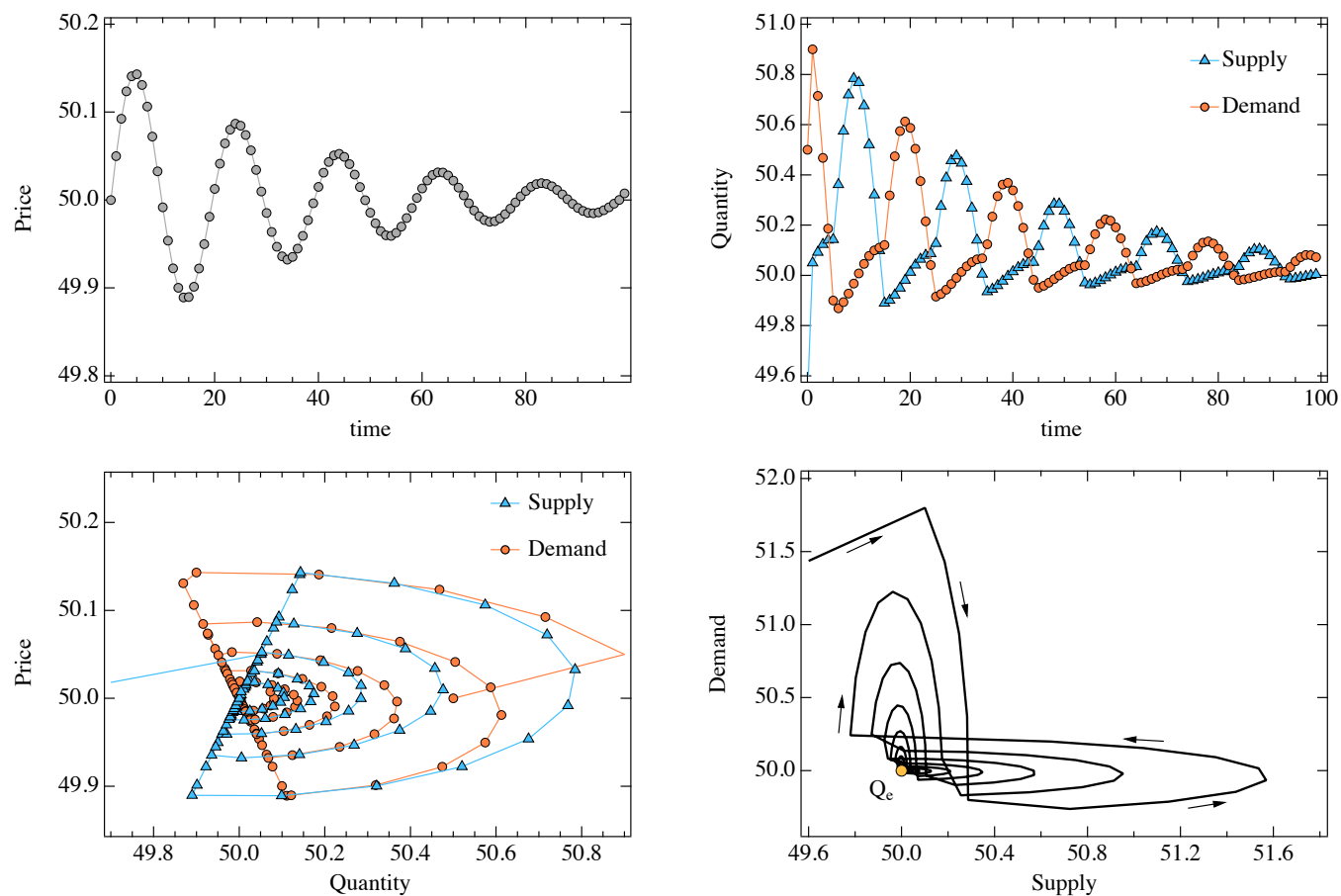
**Fig. 1. Supply and demand model** - For wheat, corn, rice, sugar (left to right and top to bottom). Price time series of the commodity (dashed purple lines) and global consumption time series (solid green lines). Blue dotted curves are best fits according to Eq. 8 and Eq. 9 for prices and consumption, respectively. Annual surplus (supply minus demand) values are from [70], and prices from [71]. Values of the fitting parameters: wheat -  $\lambda = 1 \pm 0.01$ ,  $\alpha_d(1982) = 309 \pm 53$  and  $\beta_d = 1.01 \pm 0.13$ , corn -  $\lambda = 0.94 \pm 0.01$ ,  $\alpha_d(1982) = 114 \pm 22$  and  $\beta_d = 1.91 \pm 0.23$ , rice -  $\lambda = 0.95 \pm 0.01$ ,  $\alpha_d(1982) = 87 \pm 77$  and  $\beta_d = 0.64 \pm 0.19$ , sugar -  $\lambda = 0.86 \pm 0.07$ ,  $\alpha_d(1982) = 26 \pm 20$  and  $\beta_d = 0.31 \pm 0.12$ .



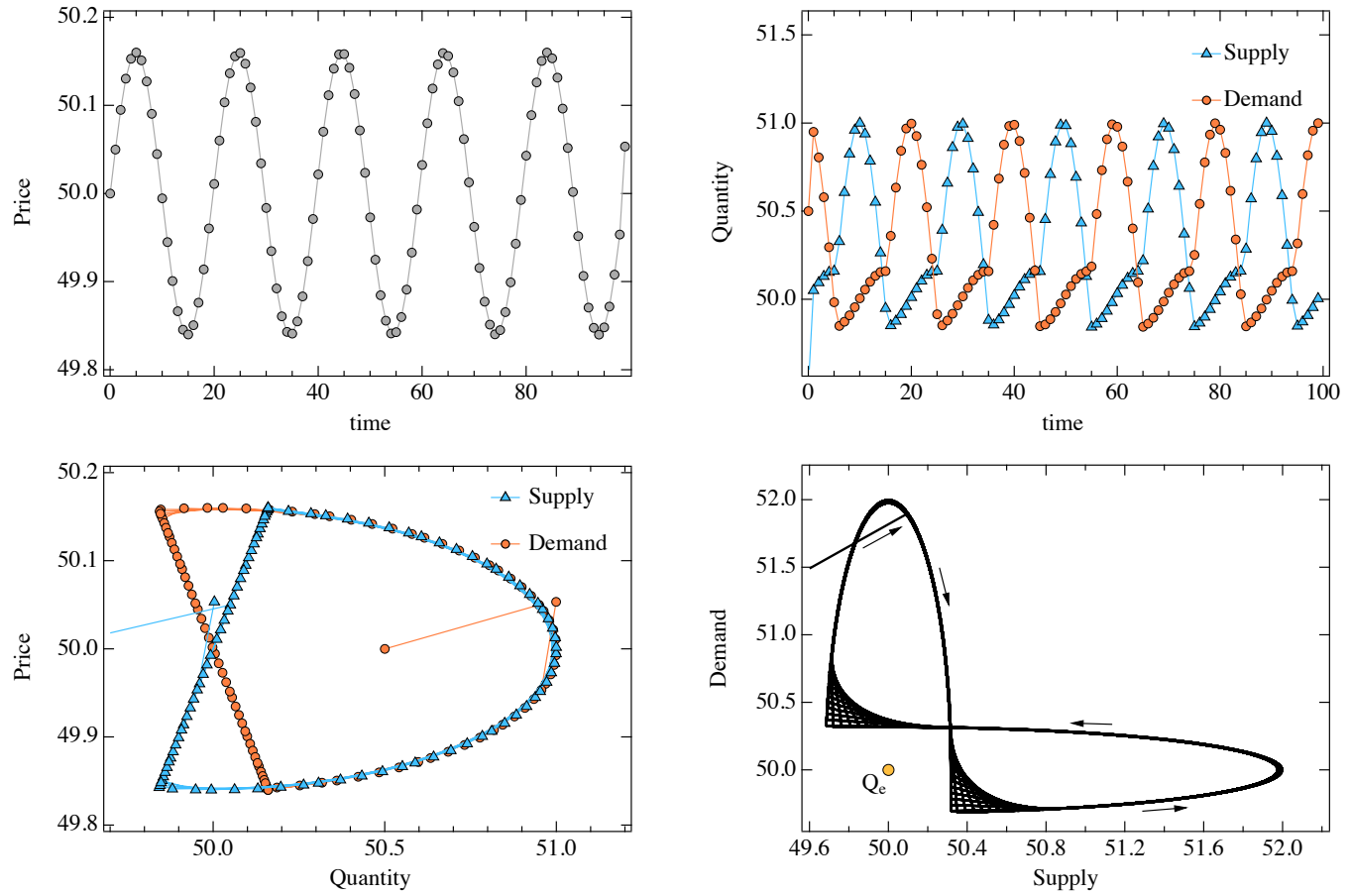
**Fig. 2. Model results** - Annual corn used for ethanol production in the US (blue circles) and the FAO Food Price Index from 1991-2010 (red triangles). Values are normalized to range from 0 (minimum) to 1 (maximum) during this period. Dotted lines are best fits to quadratic growth, with quadratic coefficients of  $0.0083 \pm 0.0003$  for corn ethanol and  $0.0081 \pm 0.0003$  for FAO index. Goodness of fit is measured with the coefficient of determination,  $R^2 = 0.989$  for corn and  $R^2 = 0.986$  for food. The 2007-2008 peak was not included in the fit or the normalization of the FAO index time series.



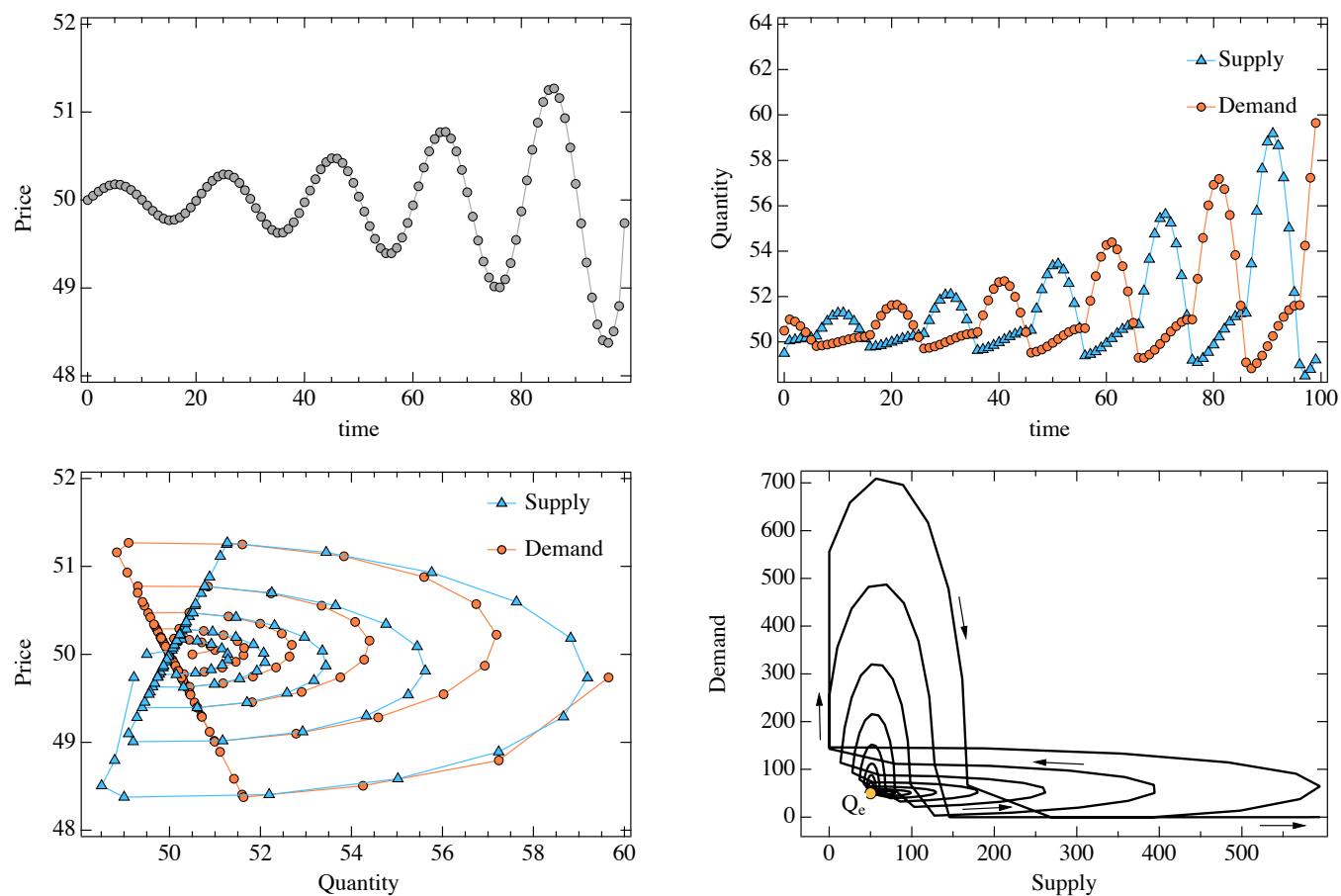
**Fig. 3. Dynamics without speculators** - Dynamic response of the system to a supply/demand shock at time  $t = 0$ . *Top Left:* Exponential convergence of  $P$  to its equilibrium value. *Top Right:* Supply and demand as a function of time. *Bottom Left:* Price/quantity relationship. *Bottom Right:* Dynamic evolution of  $Q_d$  vs  $Q_s$ . Value of parameters:  $k_{sd} = 0.1$ ,  $k_c = 5$ .



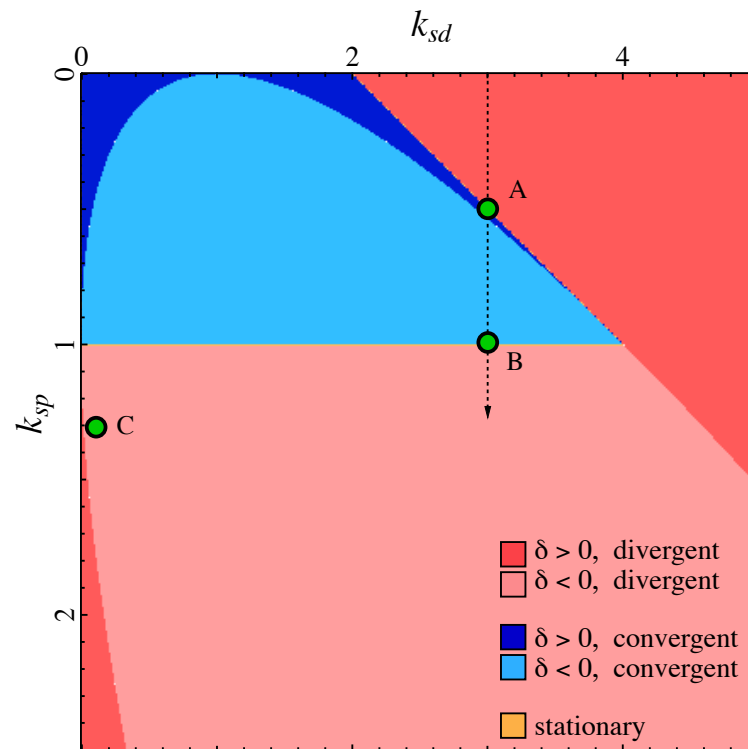
**Fig. 4. Dynamics with speculators:**  $k_{sp} < 1$  - Dynamic response of the system to a supply/demand shock at time  $t = 0$ . *Top Left:* Oscillating convergence of  $P$  to its equilibrium value. *Top Right:* Supply and demand as a function of time. *Bottom Left:* Price/quantity relationship. *Bottom Right:* Dynamic evolution of  $Q_d$  vs  $Q_s$  towards  $Q_e$ .



**Fig. 5. Dynamics with speculators:**  $k_{sp} = 1$  - Dynamic response of the system to a supply/demand shock at time  $t = 0$ . *Top Left:* Oscillations of  $P$  around its equilibrium value. *Top Right:* Supply and demand as a function of time. *Bottom Left:* Price/quantity relationship. *Bottom Right:* Dynamic evolution of  $Q_d$  vs  $Q_s$ .

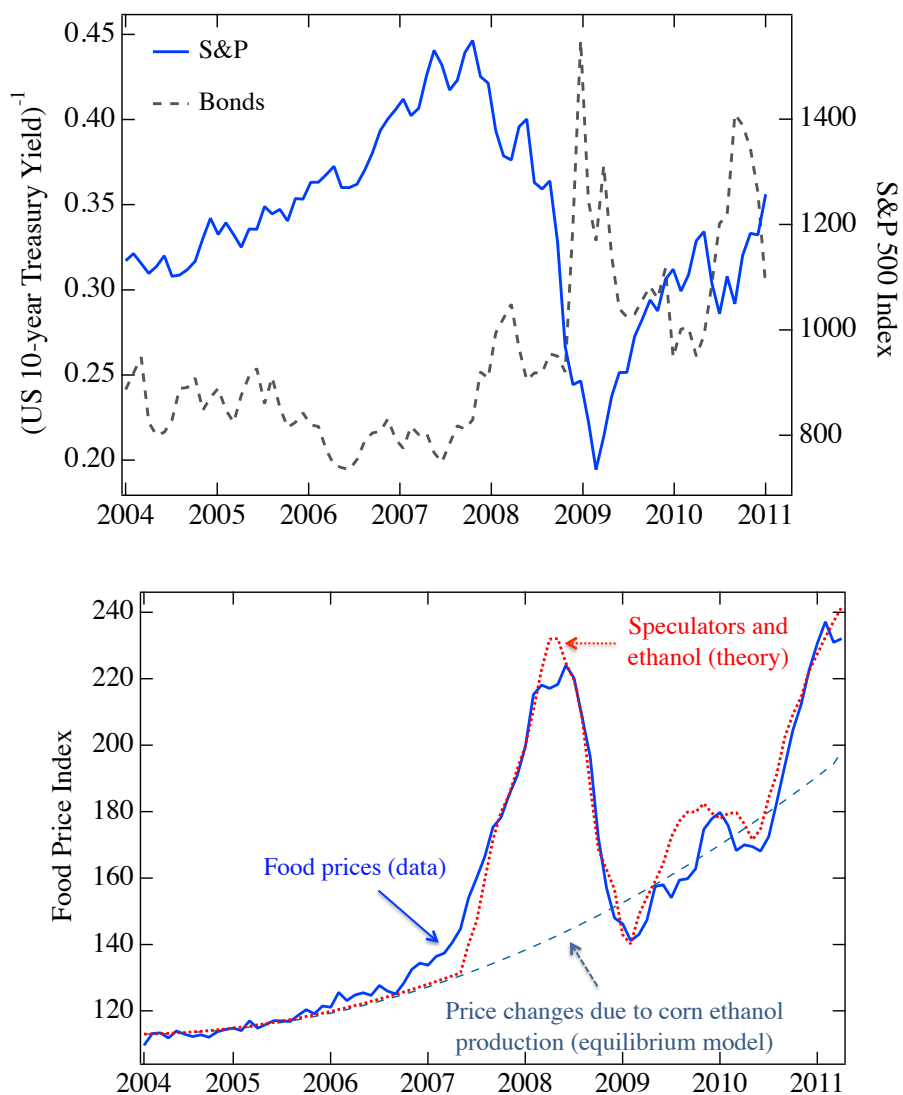


**Fig. 6. Dynamics with speculators:**  $k_{sp} > 1$  - Dynamic response of the system to a supply/demand shock at time  $t = 0$ . *Top Left:* Oscillating divergence of  $P$  to its equilibrium value. *Top Right:* Supply and demand as a function of time. *Bottom Left:* Price/quantity relationship. *Bottom Right:* Dynamic evolution of  $Q_d$  vs  $Q_s$  away from  $Q_e$ .

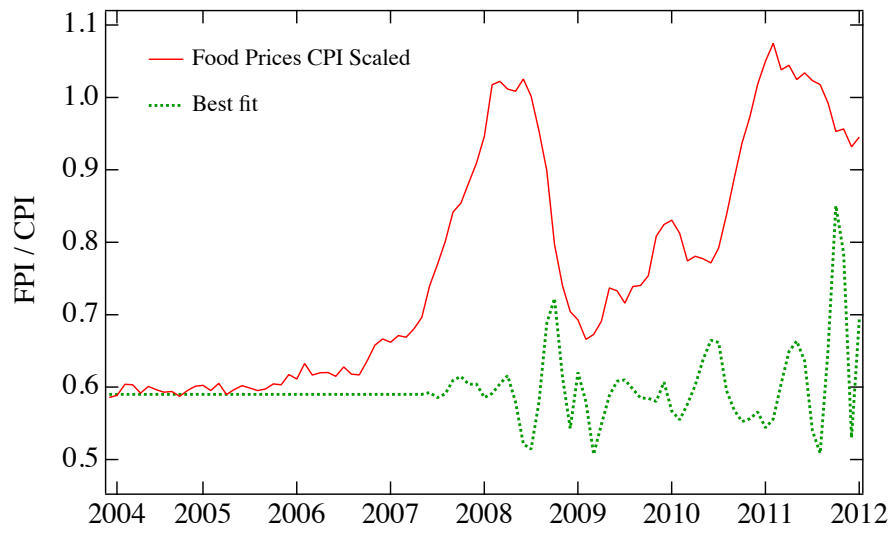


**Fig. 7. Model Phase Diagram** - Behavior of the model for different values of its two main parameters,  $k_{sd}$  and  $k_{sp}$ . Dark red regions correspond to a divergent behavior according to Eq. 23, light red to a divergent behavior according to Eq. 25 (see also Fig. 6), light blue to a convergent behavior (Eq. 25 and Fig. 4), as well as dark blue (Eq. 23). A thin yellow line between the light blue and light red regions defines a stationary point at  $k_{sp} = 1$  (Eq. 25 and Fig. 5). The region from point A to point B represents the stabilizing effect of speculators as  $k_{sp}$  increases at  $k_{sd} = 3$ . C is the point in the phase space  $(k_{sd}, k_{sp})$  corresponding to the values obtained with the fitting of food price data (see Fig. 8).





**Fig. 8. Model Results** - Top: Solid line is the monthly FAO Food Price Index between Jan 2004 and Apr 2011. Dashed line is the best fit according to Eq. 29. The effect of speculators is turned on in the first half of 2007, when the housing bubble collapsed. Values of parameters are:  $k_{sd} = 0.098$ ,  $k_{sp} = 1.29$ ,  $\mu_{equity}\gamma_0 = -0.095$ ,  $\mu_{bonds}\gamma_0 = -67.9$ . Bottom: Time series used as input to the speculator model, S&P500 index (stock market, in blue) and inverse of the US 10-year Treasury Note Yield (bonds, in black).



**Fig. 9. Model results without supply and demand shock:** Solid red line is the monthly FAO Food Price Index scaled by the Consumer Price Index between Jan 2004 and Jan 2012. Dashed green line is the best fit according to Eq. 29 without an ethanol shock term. The effect of speculators is turned on in the first half of 2007, when the housing bubble collapsed.

Table S1. Literature review, part 1. See text for notation.

Paper	Change of diet (meat)	Weather	Biofuels	Speculation	Oil	Currency exchange	Other causes	Time range
[1]	no	yes (wheat)	yes	*yes (no rice)	yes	*at times (via speculators)	trade policies, thin market, panic (rice), depletion of inventories, price transmission between commodities	2007-8 rise & fall
[2]	no	no	yes	yes	yes	yes	trade policies	2007-8 rise & fall
[3]	*no	*no	yes	yes	*yes (~30%)	#yes	fiscal expansion, lax monetary policy	2007-8 rise & fall
[4]	#yes	#yes	#yes	yes	yes	maybe	trade policies, thin market (rice), R&D decline	2007-8 rise
[5]	no	yes (wheat)	*yes	maybe	no	*no	production decline: *no	2007-8 rise
[6]	*no		yes	maybe	yes	yes	trade policies, depletion of inventories	2007-8 rise & fall
[7]			*yes					2007-8 rise & fall
[8]			#yes					2007-8 rise
[9]								
[10]	#yes	#yes	#yes	#yes	#yes	#yes	climate change, productivity and R&D decline, trade policies	2007-8 rise
[11]	*no	#yes	*yes	yes	#yes	maybe	trade policies, population increase	2007-8 rise & fall
[12]	no	yes (long term)	yes	yes	yes	yes	trade policies (rice), depletion of inventories	2007-8 rise
[13]	yes	yes	yes	*yes	yes	yes	trade policies, population increase	2007-8 rise
[14]	maybe	maybe	maybe	*yes	#yes	maybe		2007-8 rise
[15]				yes				2007-8 rise
[16]				*yes				2007-8 rise
[17]			*yes					
[18]		#yes	*yes	maybe	yes	yes and no	income growth	2007-8 rise
[19]	yes (long term)	yes (long term)	yes (long term)		yes	yes (long term)	trade policies	
[20]			no	maybe	yes			
[21]	no	yes (wheat)	yes	maybe	yes	no	depletion of inventories, trade policies	2007-8 rise & fall
[22]	no		no	no	yes	yes	countries hoarding, trade policies	2007-8 rise & fall
[23]			yes		yes	yes		2007-8 rise
[24]			yes					
[25]	#yes	#yes	#yes		*yes (via biofuels)		productivity and R&D decline	2007-8 rise
[26]			*yes					2007-8 rise & fall
[27]			yes					2007-8 rise
[28]			yes					2007-8 rise
[29]			yes (short term)		maybe	yes (long term)		2007-8 rise & fall
[30]		yes (short term)	yes (short term)		yes (short term)	yes (long term)		2007-8 rise & fall
[31]	yes		yes		yes	yes		2007-8 rise
[32]					*yes (via biofuels)	*yes		

Table S2. Literature review, part 2. See text for notation.

Paper	Change of diet (meat)	Weather	Biofuels	Speculation	Oil	Currency exchange	Other causes	Time range
[33]			yes		yes			2007-8 rise & fall
[34]			yes					2007-8 rise
[35]			yes		yes			2007-8 rise
[36]			maybe	no				2007-8 fall
[37]							financial crisis	2007-8 rise & fall
[38]					yes	yes	recession	2007-8 rise & fall
[39]		yes			yes	yes	land degradation	2007-8 rise
[40]							monetary policy	2007-8 rise & fall
[41]			yes					2007-8 rise
[42]					*yes	*yes		1998-2008
[43]								2007-8 rise
[44]	#yes	#yes	#yes (corn, soybeans) *no (rice and wheat)	#yes	#yes	#yes	trade policies, productivity decline	2007-8 rise
[45]	yes	yes	yes	yes	yes	yes	trade policies	2007-8 rise & fall
[46]	yes	no (rice)	maybe (rice)	yes (no rice)	no	yes		2007-8 rise & fall
[47]	yes	#yes			yes	yes		2007-8 rise
[48]	yes	yes		no	yes	yes	trade policies	2007-8 rise & fall
[49]					yes	yes		2007-8 rise
[50]					*yes			2007-8 rise
[51]	yes (long term)	*no	yes.		no		fertilizer cost: no; panic: yes	2007-8 rise & fall
[52]							trade policies	2007-8 rise & fall, 2011 rise
[53]			maybe	maybe				2007-8 rise
[54]			yes	maybe	yes		trade policies	2007-8 rise & fall
[55]	no	no	yes	maybe	yes		trade policies available land, climate change, population growth	2007-8 rise & fall
[56]								
[57]								2007-8 rise & fall
[58]								2007-8 rise & fall
[59]								2007-8 rise & fall
[60]	#yes	#yes	yes	maybe	#yes	#yes	delayed effect of easy credit	2007-8 rise & fall
[61]			yes		*no			2007-8 rise
[62]			yes					1984-2009
[63]						*yes (2-5%)		1975-2005