

The American DREAM: Supplementary Appendix

Question Wording:

Racial Resentment:

Racial resentment is measured by a four-item scale: “Do you agree strongly, agree somewhat, neither agree nor disagree, disagree somewhat, or disagree strongly with this statement? 1) Irish, Italians, Jewish and many other minorities overcame prejudice and worked their way up. Blacks should do the same without any special favors; 2) Generations of slavery and discrimination have created conditions that make it difficult for blacks to work their way out of the lower class; 3) Over the past few years, blacks have gotten less than they deserve; 4) It’s really a matter of some people not trying hard enough, if blacks would only try harder they could be just as well off as whites.”

Egalitarianism:

Egalitarianism is measured in the 2012 and 2016 ANES by a six-item scale: “Do you agree strongly, agree somewhat, neither agree nor disagree, disagree somewhat, or disagree strongly with this statement? 1) Our society should do whatever is necessary to make sure that everyone has an equal opportunity to succeed; 2) We have gone too far in pushing equal rights in this country; 3) One of the big problems in this country is that we don't give everyone an equal chance; 4) This country would be better off if we worried less about how equal people are; 5) It is not really that big a problem if some people have more of a chance in life than others; 6) If people were treated more equally in this country we would have many fewer problems.

TABLES

Table 1A. Determinants of Dream Act Preferences

	(1) 2012 Dream Act	Odds Ratio	(2) 2012 Dream Favor (Neither)	(3) 2012 Dream Favor (Oppose)	(4) Logit 2016 Dream Act
Racial Resentment	-0.751** (0.247)	0.472	-0.207 (0.302)	-1.251*** (0.362)	-1.146** (0.352)
Authoritarianism	-0.355* (0.157)	0.701	-0.445* (0.195)	-0.314 (0.232)	-0.586* (0.252)
Moral Traditionalism	-0.618** (0.228)	0.539	-0.406 (0.279)	-0.869** (0.334)	-0.120 (0.352)
Anti-Egalitarianism	-1.181*** (0.253)	0.307	-1.335*** (0.318)	-1.167*** (0.354)	-0.977** (0.364)
Asian Affect	0.312 (0.315)	1.367	0.273 (0.419)	0.772+ (0.436)	-0.184 (0.469)
Latino Affect	-0.074 (0.313)	0.929	0.499 (0.425)	-0.265 (0.450)	1.070* (0.461)
Black Affect	-0.329 (0.307)	0.719	-0.734+ (0.413)	-0.590 (0.414)	-0.445 (0.439)
"Illegal" Affect	1.436*** (0.217)	4.205	0.545* (0.265)	2.355*** (0.315)	1.872*** (0.322)
Muslim Affect	0.403+ (0.212)	1.497+	0.052 (0.269)	0.723* (0.298)	0.224 (0.304)
Latinos in Politics	-0.220 (0.145)	0.803	-0.090 (0.184)	-0.308 (0.210)	-0.998*** (0.237)
Patriotism	0.627* (0.258)	1.872	0.638* (0.324)	0.661+ (0.389)	0.446 (0.444)
Imm. Job Threat	-0.774*** (0.150)	0.461	-0.494** (0.187)	-0.888*** (0.213)	-0.966*** (0.228)
National Economy	-0.668*** (0.123)	0.513	-0.486** (0.151)	-0.939*** (0.183)	-0.596** (0.204)
Children	0.016 (0.102)	1.016	-0.124 (0.127)	-0.020 (0.149)	0.187 (0.155)
Education	0.228 (0.171)	1.256	0.764*** (0.214)	-0.039 (0.259)	1.139* (0.504)
Income	0.193 (0.156)	1.213	0.226 (0.195)	0.327 (0.230)	-0.032 (0.248)
Party ID	-0.034 (0.123)	1.034	-0.041 (0.155)	-0.049 (0.190)	0.007 (0.096)
Age	0.182 (0.182)	1.200	-0.273 (0.224)	0.545* (0.266)	0.573* (0.265)

Gender	0.296*** (0.084)	1.345	0.254* (0.104)	0.403** (0.125)	0.205 (0.131)
Cut 1	-2.458*** (0.343)		-1.249** (0.414)	-2.159*** (0.505)	1.615** (0.603)
Cut 2	-1.007** (0.341)				
Pseudo R2	0.128		0.094	0.254	0.227
N	2526		1990	1877	1989
Log Likelihood	-2234.977		-1138.089	-837.354	-787.211

Note: + p<.10 * p<.05 ** p<.01 *** p<.001

Source: Models 1-3, 2012 ANES; Model 4 2016 ANES

Table 2A. Determinants of Police Checks, by 2012 Dream Act Preferences

	(1) Checks Full	(2) Dream Favor	(2) Odds ratio	(2A) Without PID	(3) Dream Neither	(4) Dream Oppose
Racial Resentment	1.641*** (0.269)	1.335*** (0.352)	3.798*** (1.335)	1.418*** (0.341)	1.766** (0.543)	1.493+ (0.779)
Authoritarianism	-0.001 (0.176)	0.331 (0.230)	1.392 (0.320)	0.428+ (0.223)	-0.661+ (0.351)	-0.678 (0.589)
Moral Traditionalism	1.226*** (0.252)	1.117*** (0.317)	3.055*** (0.970)	1.284*** (0.301)	1.009+ (0.535)	1.753* (0.806)
Anti-Egalitarianism	1.193*** (0.302)	1.434*** (0.397)	4.195*** (1.667)	1.474*** (0.380)	-0.034 (0.604)	0.922 (0.920)
Asian Affect	0.511 (0.405)	0.625 (0.548)	1.867 (1.023)	0.664 (0.539)	0.256 (0.801)	1.449 (1.007)
Latino Affect	-0.388 (0.423)	-1.427* (0.619)	0.240* (0.149)	-1.508* (0.610)	0.486 (0.732)	0.865 (1.053)
Black Affect	0.664+ (0.403)	1.474** (0.571)	4.365** (2.491)	1.519** (0.555)	-0.203 (0.775)	-0.385 (0.981)
"Illegal" Affect	-2.758*** (0.250)	-2.722*** (0.333)	0.066*** (0.022)	-2.665*** (0.324)	-2.644*** (0.503)	-2.267** (0.740)
Muslim Affect	-0.487+ (0.260)	-0.807* (0.350)	0.446* (0.156)	-1.014** (0.339)	-0.122 (0.508)	-0.098 (0.727)
Latinos in Politics	0.381* (0.170)	0.343 (0.228)	1.409 (0.322)	0.413+ (0.223)	0.871** (0.331)	-0.199 (0.509)
Patriotism	1.136*** (0.277)	1.154** (0.387)	3.172** (1.228)	1.339*** (0.379)	0.823 (0.518)	2.099** (0.738)
Imm. Job Threat	0.857*** (0.178)	0.897*** (0.237)	2.452*** (0.580)	0.793*** (0.228)	0.599+ (0.354)	0.504 (0.534)
National Economy	0.639*** (0.137)	0.563** (0.182)	1.757** (0.320)	0.616*** (0.171)	0.466+ (0.264)	0.729+ (0.440)
Children	-0.074 (0.115)	0.039 (0.151)	1.040 (0.157)	0.037 (0.147)	-0.184 (0.224)	-0.154 (0.335)
Education	-0.296 (0.196)	-0.381 (0.259)	0.683 (0.177)	-0.260 (0.250)	-0.106 (0.372)	-0.098 (0.641)
Income	0.051 (0.177)	-0.231 (0.235)	0.794 (0.187)	-0.174 (0.228)	0.595+ (0.335)	0.728 (0.564)
Party ID	0.513*** (0.143)	0.582** (0.193)	1.790** (0.346)	- (0.257)	0.370 (0.257)	0.753+ (0.445)
Age	0.219 (0.203)	0.044 (0.263)	1.045 (0.275)	-0.079 (0.256)	0.555 (0.405)	1.573* (0.645)
Gender	-0.090	0.005	1.005	0.028	-0.292	-0.088

	(0.096)	(0.126)	(0.127)	(0.123)	(0.183)	(0.329)
Cut 1	1.776*** (0.366)	1.510** (0.478)	4.528** (2.164)	1.622*** (0.464)	0.451 (0.740)	3.930*** (1.136)
Cut 2	3.204*** (0.371)	2.902*** (0.484)	18.218*** (8.813)	2.968*** (0.470)	2.444** (0.745)	4.667*** (1.147)
Pseudo R2	0.266	0.270	0.270	0.260	0.161	0.209
N	2527	1334	1334	1387	649	536
Log Likelihood	-1739.084	-1009.983	-1009.983	-1064.463	-467.349	-189.253

Note: + p<.10 * p<.05 ** p<.01 *** p<.001

Source: 2012 ANES

Table 3A. Determinants of Police Checks, by Party Identification

	(1) Democrats	(2) Independents	(3) Republicans
Racial Resentment	2.122*** (0.453)	1.174** (0.440)	1.760** (0.563)
Authoritarianism	0.264 (0.307)	-0.069 (0.282)	-0.096 (0.359)
Moral Traditionalism	1.604*** (0.442)	0.609 (0.412)	1.654*** (0.495)
Anti-Egalitarianism	1.428* (0.562)	1.237* (0.489)	0.554 (0.551)
Asian Affect	0.609 (0.683)	0.287 (0.718)	0.978 (0.720)
Latino Affect	-0.963 (0.766)	-0.740 (0.694)	0.403 (0.777)
Black Affect	0.462 (0.761)	1.553* (0.650)	0.038 (0.731)
"Illegal" Affect	-2.657*** (0.445)	-2.920*** (0.403)	-2.655*** (0.481)
Muslim Affect	-0.087 (0.474)	-0.669 (0.425)	-0.768 (0.487)
Latinos in Politics	0.117 (0.302)	0.407 (0.274)	0.768* (0.328)
Patriotism	0.438 (0.483)	1.822*** (0.410)	0.805 (0.659)
Imm. Job Threat	0.856** (0.317)	1.024*** (0.290)	0.622+ (0.336)
National Economy	0.486* (0.245)	0.830*** (0.218)	0.482+ (0.277)
Children	-0.129 (0.207)	0.039 (0.187)	-0.236 (0.217)
Education	-0.366 (0.333)	-0.316 (0.321)	0.081 (0.397)
Income	-0.275 (0.309)	0.167 (0.292)	0.481 (0.346)
Age	-0.042 (0.367)	0.214 (0.328)	0.555 (0.377)
Gender	0.252 (0.167)	-0.370* (0.158)	-0.094 (0.187)
Cut 1	1.358*	1.521**	1.809*

	(0.635)	(0.588)	(0.871)
Cut 2	2.819***	2.941***	3.320***
	(0.642)	(0.597)	(0.876)
Pseudo R2	0.258	0.219	0.156
N	732	904	891
Log Likelihood	-579.856	-657.817	-478.267

Note: + p<.10 * p<.05 ** p<.01 *** p<.001

Source: 2012 ANES; Based on a 3-point PID scale.

Table 4A. Determinants of Police Checks Among DREAM Act Supporters, by Party Identification

	Democrats	Odds Ratio	Independents	Odds Ratio	Republicans	Odds Ratio
Racial Resentment	1.821** (0.583)	6.175** (3.598)	0.661 (0.565)	1.937 (1.095)	1.649* (0.789)	5.203* (4.104)
Anti-Egalitarianism	2.009** (0.731)	7.453** (5.446)	1.591* (0.627)	4.910* (3.080)	0.329 (0.771)	1.390 (1.071)
Authoritarianism	0.088 (0.393)	1.092 (0.429)	0.460 (0.368)	1.583 (0.583)	0.405 (0.502)	1.499 (0.753)
Moral Traditionalism	1.745** (0.551)	5.727** (3.158)	0.427 (0.514)	1.532 (0.788)	1.278+ (0.678)	3.591+ (2.436)
Asian Affect	0.822 (0.896)	2.274 (2.038)	0.564 (0.984)	1.757 (1.728)	1.240 (1.056)	3.455 (3.647)
Latino Affect	-0.824 (1.027)	0.439 (0.451)	-1.100 (1.034)	0.333 (0.344)	-2.484* (1.226)	0.083* (0.102)
Black Affect	-0.243 (1.067)	0.784 (0.836)	1.861* (0.876)	6.431* (5.632)	3.008** (1.154)	20.257** (23.369)
"Illegal" Affect	-2.969*** (0.579)	0.051*** (0.030)	-3.095*** (0.530)	0.045*** (0.024)	-2.257** (0.706)	0.105** (0.074)
Muslim Affect	-0.254 (0.620)	0.776 (0.481)	-1.016+ (0.562)	0.362+ (0.204)	-1.842* (0.754)	0.158* (0.119)
Latinos in Politics	0.314 (0.386)	1.369 (0.528)	0.386 (0.364)	1.471 (0.536)	0.389 (0.497)	1.476 (0.733)
Patriotism	0.750 (0.587)	2.116 (1.242)	2.195*** (0.634)	8.980*** (5.695)	0.393 (1.033)	1.481 (1.530)
Imm. Job Threat	0.961* (0.417)	2.613* (1.089)	1.058** (0.385)	2.881** (1.110)	0.675 (0.474)	1.963 (0.931)
National Economy	0.549+ (0.329)	1.731+ (0.569)	0.596* (0.285)	1.815* (0.517)	0.735+ (0.398)	2.085+ (0.831)
Children	0.330 (0.258)	1.390 (0.359)	-0.099 (0.244)	0.905 (0.221)	-0.284 (0.324)	0.753 (0.244)
Education	-0.116 (0.422)	0.891 (0.375)	-0.780+ (0.430)	0.459+ (0.197)	-0.070 (0.594)	0.933 (0.554)
Income	-0.718+ (0.390)	0.488+ (0.190)	0.155 (0.392)	1.168 (0.457)	0.239 (0.516)	1.270 (0.655)
Age	0.125 (0.448)	1.133 (0.507)	-0.210 (0.429)	0.811 (0.348)	0.120 (0.540)	1.127 (0.608)
Gender	0.306 (0.215)	1.357 (0.292)	-0.171 (0.203)	0.843 (0.171)	-0.042 (0.279)	0.958 (0.267)

Cut 1	1.457+	4.294+	1.345+	3.838+	1.017	2.765
	(0.801)	(3.440)	(0.780)	(2.995)	(1.309)	(3.620)
Cut 2	2.974***	19.572***	2.741***	15.505***	2.345+	10.433+
	(0.811)	(15.866)	(0.790)	(12.256)	(1.312)	(13.694)
Pseudo R2	0.247	0.247	0.224	0.224	0.153	0.153
N	480	480	497	497	357	357.000
Log Likelihood	-369.709	-369.709	-394.737	-394.737	-228.296	-228.296

Note: + p<.10 * p<.05 ** p<.01 *** p<.001

Source: 2012 ANES; Based on a 3-point PID scale.

Table 5A. Avg. Racial Resentment and Difference in Means

	(1) Support DREAM Act & Police Checks	(2) Support DREAM Act & Oppose Police Checks	Difference of Means T-test Between 1 and 2	(3) Oppose DREAM Act & Support Police Checks	Difference of Means T-test Between 1 and 3	(4) Oppose DREAM Act & Oppose Police Checks
Democrats	.65 (133)	.37 (262)	t(393)= 12.32, p=.000)	.76 (63)	t(194)= -3.60, p=.000)	.61 (12)
Independents	.70 (270)	.48 (142)	t(410)= 9.98, p=.000)	.78 (188)	t(456)= -4.43, p=.000)	.61 (19)
Republicans	.76 (277)	.64 (43)	t(318)= 3.87, p=.000)	.83 (254)	t(529)= -4.84, p=.000)	.72 (9)

Note: Sample size in parentheses.

Source: 2012 ANES

Table 6A. Avg. Egalitarianism

	(1) Support DREAM Act & Police Checks	(2) Support DREAM Act & Oppose Police Checks	Difference of Means T-test Between 1 and 2	(3) Oppose DREAM Act & Support Police Checks	Difference of Means T-test Between 1 and 3	(4) Oppose DREAM Act & Oppose Police Checks
Democrats	.38 (132)	.23 (264)	t(394)= 9.17, p=.000)	.42 (63)	t(193)= -1.60, p=.113)	.42 (12)
Independents	.46 (269)	.31 (143)	t(410)= 7.77, p=.000)	.52 (187)	t(454)= -3.31, p=.001)	.38 (19)
Republicans	.53 (282)	.46 (46)	t(322)= 2.13, p=.034)	.59 (254)	t(534)= -3.47, p=.001)	.54 (9)

Note: Sample size in parentheses.

Source: 2012 ANES

Table 7A. Determinants of Withholding Funds, by 2018 Dream Act Preferences

	(1) Funds Full	(2) Dream Favor	(2) Odds Ratio	(3) Dream Oppose
Racial Resentment	3.318*** (0.100)	3.091*** (0.115)	22.007*** (2.538)	2.270*** (0.227)
Denial of White Advantage	1.091*** (0.076)	1.041*** (0.090)	2.833*** (0.256)	0.685*** (0.155)
Lost Job	0.138 (0.091)	0.201+ (0.104)	1.223+ (0.127)	0.054 (0.202)
National Economy	-2.258*** (0.088)	-2.290*** (0.105)	0.101*** (0.011)	-1.966*** (0.172)
Children	0.118* (0.046)	0.196*** (0.054)	1.216*** (0.066)	0.001 (0.097)
Education	-0.346*** (0.075)	-0.489*** (0.087)	0.613*** (0.054)	0.257 (0.165)
Family Income	-0.219* (0.104)	-0.300* (0.122)	0.741* (0.090)	0.132 (0.221)
Party ID	1.338*** (0.056)	1.365*** (0.065)	3.916*** (0.253)	0.721*** (0.122)
Age (reverse)	-0.010*** (0.001)	-0.008*** (0.002)	0.992*** (0.002)	-0.023*** (0.003)
Gender	-0.266*** (0.042)	-0.159** (0.049)	0.853** (0.042)	-0.472*** (0.090)
Constant	18.872*** (2.596)	14.923*** (2.966)		46.404*** (5.949)
Pseudo R2	0.454	0.420	0.420	0.205
N	21208	15403	15403	5777
Log Likelihood	-8022.586	-5943.614	-5943.614	-1831.443

Note: + p<.10 * p<.05 ** p<.01 *** p<.001

Source: 2018 CCES Common Content.

Table 8A. Determinants of Withholding Funds Among Dream Act Supporters, by Party ID

	Democrats	Odds Ratio	Independents	Odds Ratio	Republicans	Odds Ratio
Racial Resentment	3.300*** (0.195)	27.100*** (5.277)	3.461*** (0.199)	31.838*** (6.341)	1.838*** (0.220)	6.285*** (1.381)
Denial of White Advantage	1.034*** (0.165)	2.811*** (0.465)	1.201*** (0.156)	3.324*** (0.518)	0.754*** (0.153)	2.126*** (0.325)
Lost Job	0.175 (0.183)	1.191 (0.218)	0.162 (0.160)	1.176 (0.188)	0.197 (0.198)	1.217 (0.242)
National Economy	-1.472*** (0.190)	0.230*** (0.044)	-2.834*** (0.174)	0.059*** (0.010)	-2.443*** (0.188)	0.087*** (0.016)
Children	0.357*** (0.098)	1.428*** (0.139)	0.129 (0.091)	1.138 (0.104)	0.036 (0.096)	1.037 (0.100)
Education	-0.926*** (0.164)	0.396*** (0.065)	-0.387** (0.148)	0.679** (0.101)	-0.222 (0.152)	0.801 (0.122)
Family Income	-0.605** (0.227)	0.546** (0.124)	-0.126 (0.208)	0.881 (0.183)	-0.108 (0.212)	0.898 (0.190)
Age (reverse)	0.009** (0.003)	1.009** (0.003)	-0.007** (0.003)	0.993** (0.003)	-0.026*** (0.003)	0.975*** (0.003)
Gender	-0.144 (0.092)	0.866 (0.079)	0.040 (0.082)	1.041 (0.086)	-0.374*** (0.089)	0.688*** (0.061)
Constant	-19.561*** (5.458)		12.223* (5.211)		51.443*** (5.231)	
Pseudo R2	0.252	0.252	0.343	0.343	0.180	0.180
N	6518	6518	4623	4623	4262	4262
Log Likelihood	-1899.177	-1899.177	-2025.997	-2025.997	-1901.834	-1901.834

Note: + p<.10 * p<.05 ** p<.01 *** p<.001

Source: 2018 CCES Common Content.

More Restrictive Immigration Policies**Table 9A.** Determinants of a Border Wall, by Dream Act Preferences

	(1) Wall Full	(2) Dream Favor	(3) Dream Oppose
Racial Resentment	1.489*** (0.270)	1.378*** (0.307)	1.286* (0.640)
Authoritarianism	0.207 (0.192)	0.107 (0.220)	0.211 (0.450)
Moral Traditionalism	1.030*** (0.278)	1.129*** (0.316)	0.685 (0.635)
Egalitarianism	0.576+ (0.297)	0.467 (0.347)	0.322 (0.627)
Asian Affect	0.370 (0.415)	0.610 (0.493)	-0.269 (0.823)
Latino Affect	-0.393 (0.419)	-0.588 (0.519)	0.149 (0.742)
Black Affect	0.528 (0.391)	0.307 (0.452)	1.248 (0.813)
"Illegal" Affect	-1.427*** (0.246)	-1.321*** (0.285)	-0.944+ (0.551)
Muslim Affect	-1.150*** (0.258)	-1.331*** (0.304)	-0.863+ (0.522)
Latinos in Politics	0.266 (0.188)	0.215 (0.219)	-0.010 (0.410)
Patriotism	1.222*** (0.328)	1.519*** (0.378)	0.578 (0.742)
Imm. Job Threat	0.857*** (0.184)	0.712*** (0.213)	0.783+ (0.403)
National Economy	0.852*** (0.156)	0.891*** (0.178)	0.434 (0.355)
Children	0.061 (0.119)	0.097 (0.136)	-0.010 (0.269)
Education	-0.652 (0.404)	-1.105* (0.471)	1.440+ (0.856)
Income	-0.267 (0.198)	-0.308 (0.229)	-0.175 (0.419)
Party ID	1.024*** (0.149)	1.116*** (0.171)	0.732* (0.324)
Age	0.197 (0.208)	0.138 (0.238)	0.751 (0.473)

Gender	-0.215*	-0.251*	-0.027
	(0.103)	(0.118)	(0.233)
Cut 1	2.485***	2.203***	2.655**
	(0.474)	(0.553)	(0.989)
Cut 2	3.861***	3.635***	4.048***
	(0.479)	(0.559)	(1.003)
Pseudo R2	0.278	0.272	0.115
N	2009	1572	415
Log Likelihood	-1531.358	-1176.682	-310.705

Note: + p<.10 * p<.05 ** p<.01 *** p<.001

Source: 2016 ANES

Table 10A. Determinants of a Border Wall Among DREAM Act Supporters, by Party Identification

	Democrats	Independents	Republicans
Racial Resentment	2.109** (0.668)	1.256* (0.512)	1.102* (0.497)
Authoritarianism	-0.076 (0.496)	0.613+ (0.352)	-0.328 (0.358)
Moral Traditionalism	2.412** (0.754)	0.345 (0.510)	1.355** (0.504)
Egalitarianism	-0.585 (0.794)	0.759 (0.590)	0.492 (0.539)
Asian Affect	-0.149 (1.082)	0.584 (0.824)	0.842 (0.775)
Latino Affect	-1.489 (1.153)	0.109 (0.867)	-0.834 (0.833)
Black Affect	0.936 (1.082)	0.408 (0.710)	0.019 (0.733)
"Illegal" Affect	-1.773** (0.659)	-1.349** (0.476)	-1.129* (0.447)
Muslim Affect	-1.051 (0.724)	-1.634** (0.514)	-1.139* (0.466)
Latinos in Politics	0.080 (0.469)	-0.048 (0.371)	0.508 (0.356)
Patriotism	0.223 (0.677)	1.649** (0.599)	2.545*** (0.761)
Imm. Job Threat	0.439 (0.487)	0.805* (0.348)	0.714* (0.337)
National Economy	0.600 (0.390)	1.159*** (0.291)	0.823** (0.299)
Children	0.032 (0.299)	0.155 (0.226)	0.173 (0.220)
Education	-1.907+ (1.008)	-1.192 (0.789)	-0.998 (0.784)
Income	-0.541 (0.469)	-0.130 (0.393)	-0.355 (0.372)
Age	-0.528 (0.493)	0.859* (0.403)	-0.072 (0.382)
Gender	0.047 (0.267)	-0.577** (0.201)	-0.145 (0.189)

Cut 1	-0.104	2.242*	1.882+
	(1.197)	(0.913)	(1.031)
Cut 2	1.335	3.809***	3.248**
	(1.202)	(0.923)	(1.039)
Pseudo R2	0.251	0.199	0.124
N	532	527	513
Log Likelihood	-260.340	-440.650	-457.848

Note: + p<.10 * p<.05 ** p<.01 *** p<.001

Source: 2016 ANES

Placebo Checks- Spending on Social Security & Welfare Programs**Table 11A. Avg. Racial Resentment**

	Increase SS and Welfare Programs	Increase SS and Decrease Welfare Programs	Difference of Means t-test
Democrats	.50 (86)	.71 (127)	t(211)= 6.04, p=.000
Independents	.62 (76)	.76 (189)	t(263)= 4.71, p=.000
Republicans	.63 (14)	.81 (226)	t(238)= 3.83, p=.000

Source: ANES 2012

Table 12A. Avg. Egalitarianism

	Increase SS and Welfare Programs	Increase SS and Decrease Welfare Programs	Difference of Means t-test
Democrats	.25 (89)	.39 (127)	t(214)=5.89, p=.000
Independents	.32 (77)	.46 (187)	t(262)= 5.98, p=.000
Republicans	.42 (14)	.52 (227)	t(239)= 2.05, p=.04

Source: ANES 2012

FIGURES

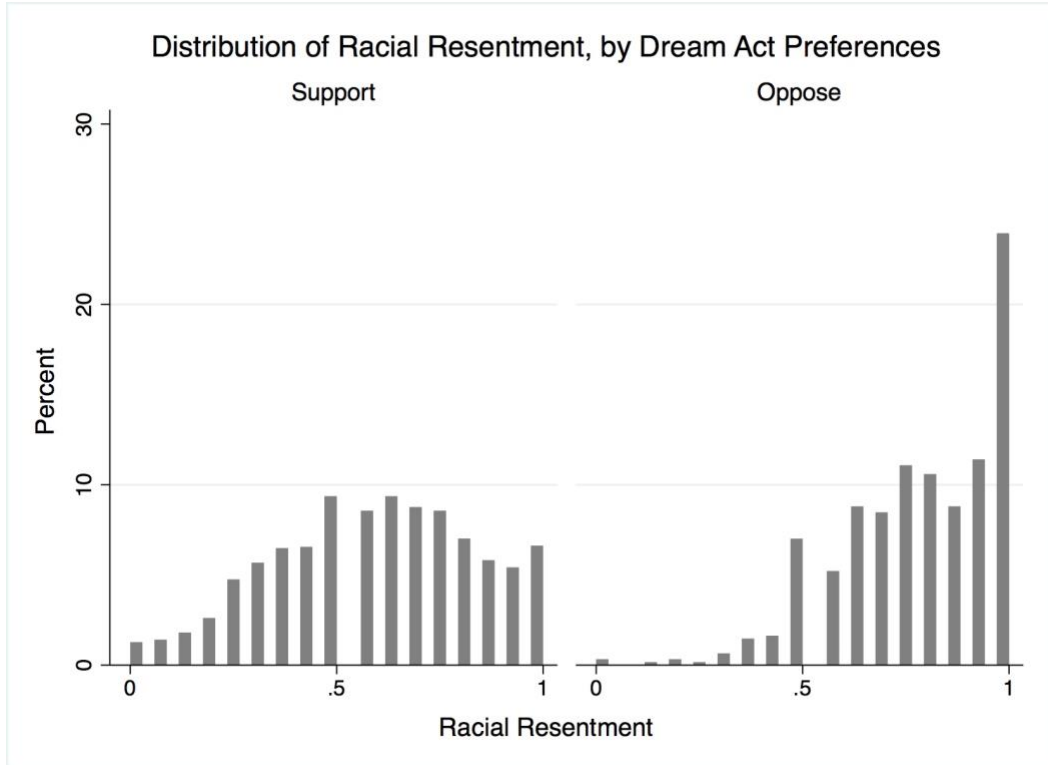


Figure 1A. Distribution of Racial Resentment, by DREAM Act Preferences
Source: 2012 ANES

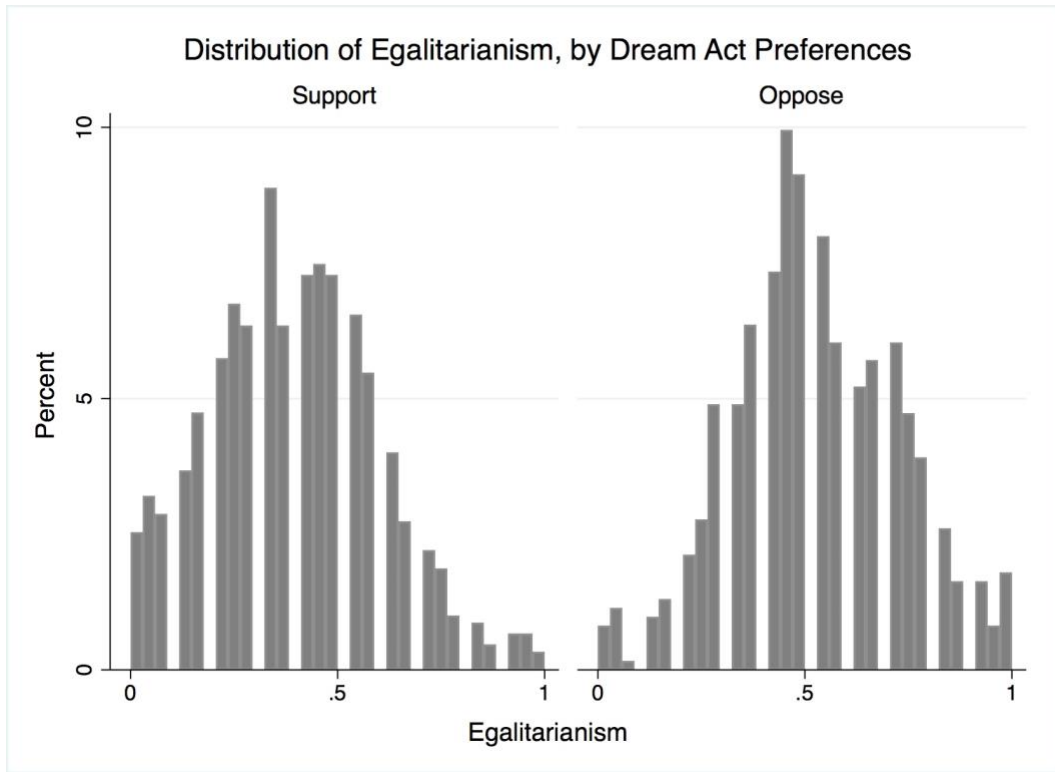


Figure 2A. Distribution of Egalitarianism, by DREAM Act Preferences
Source: 2012 ANES

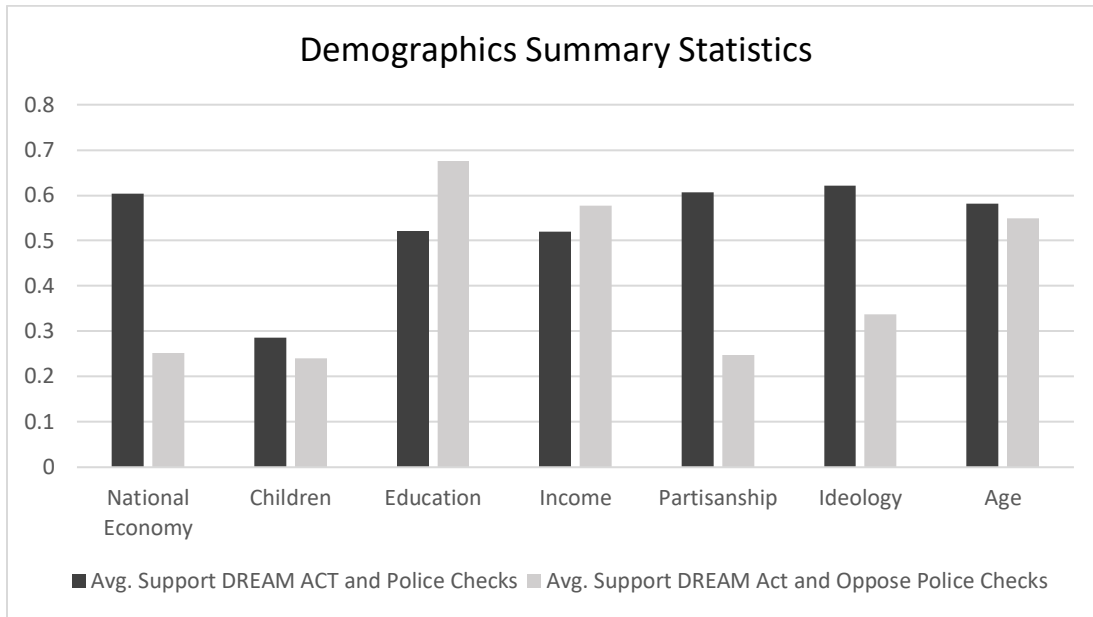


Figure 3A. Demographic Statistics by Support for Policies
Source: 2012 ANES

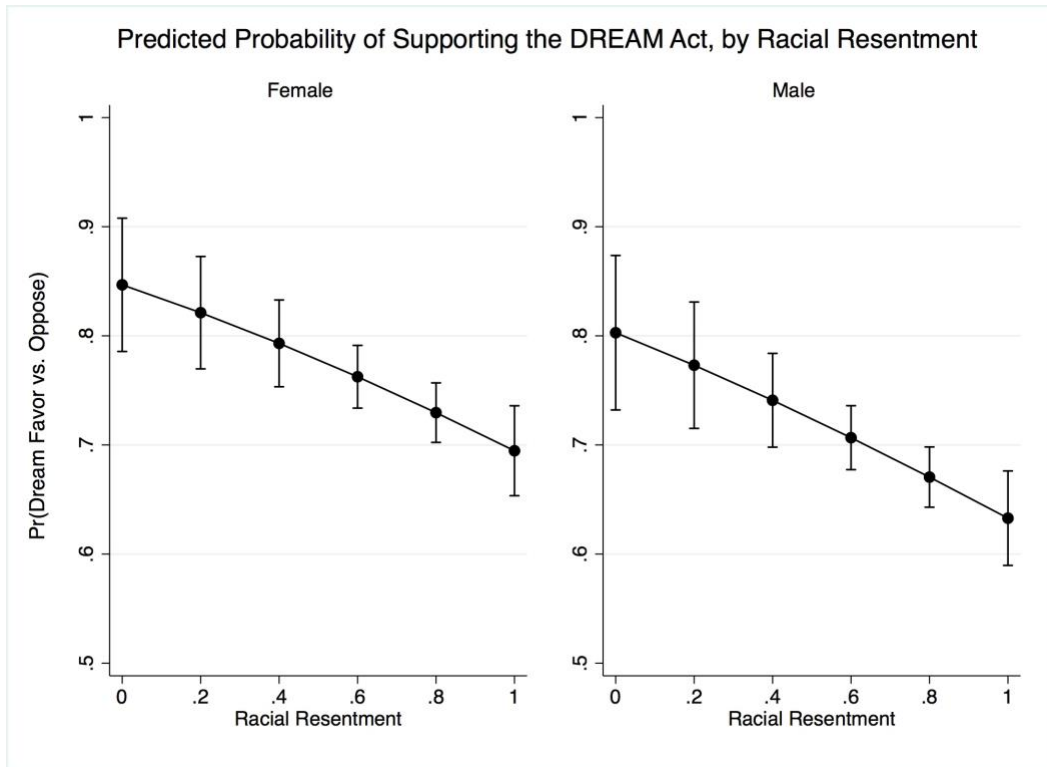


Figure 4A. Support for the Dream Act, by Racial Resentment (Model 3)
Source: 2012 ANES

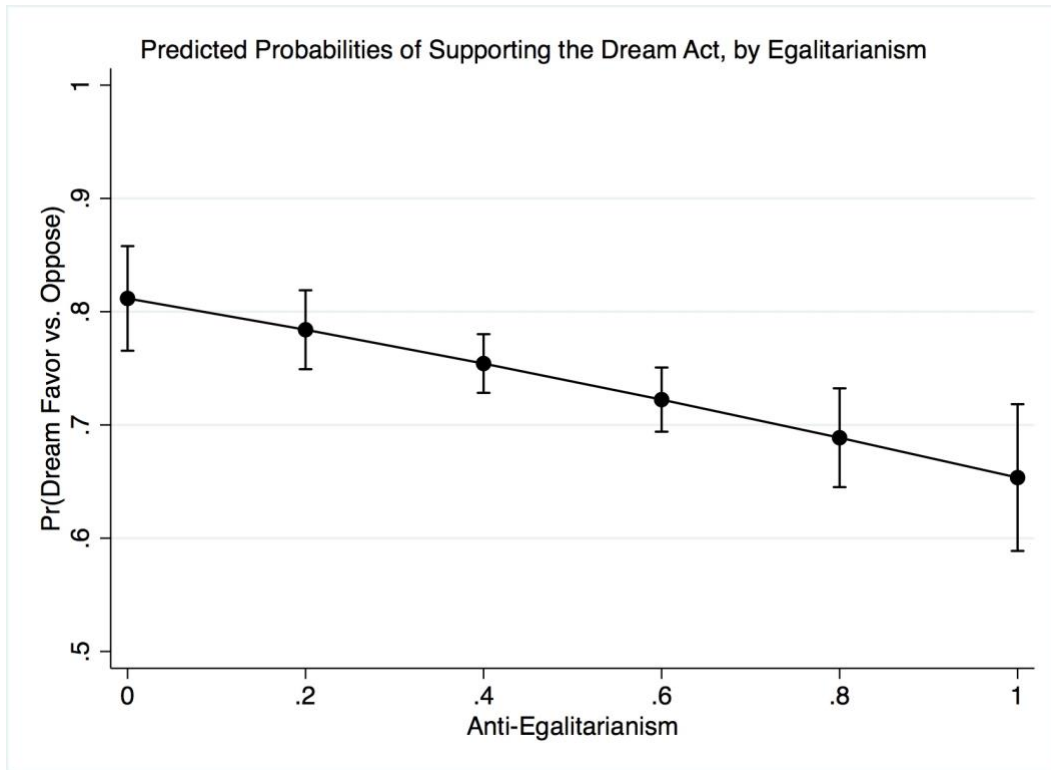


Figure 5A. Favoring the Dream Act (Oppose), by Egalitarianism (Female)
Source: 2012 ANES

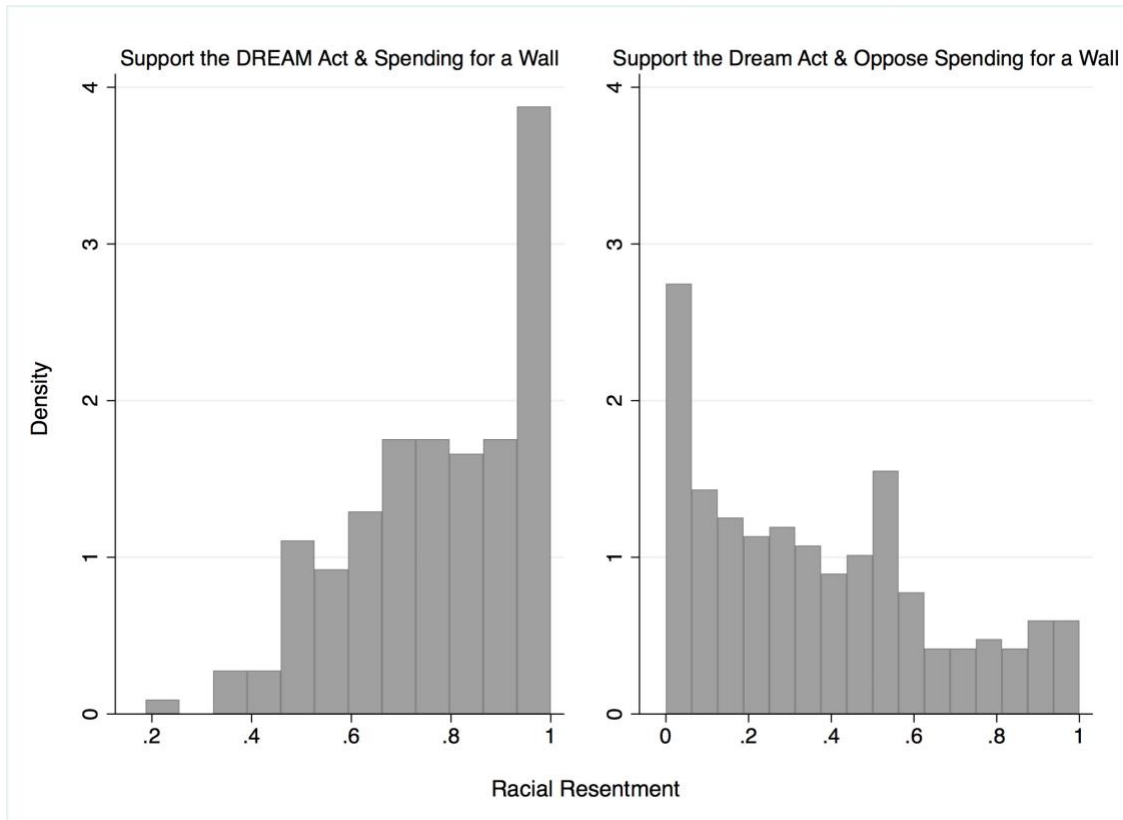


Figure 6A. Distribution of Racial Resentment Depending on Support for a Border Wall and the DREAM Act
Source: 2018 CCES¹

¹ Unfortunately, the CCES 2018 common content does not have measurements of egalitarianism.

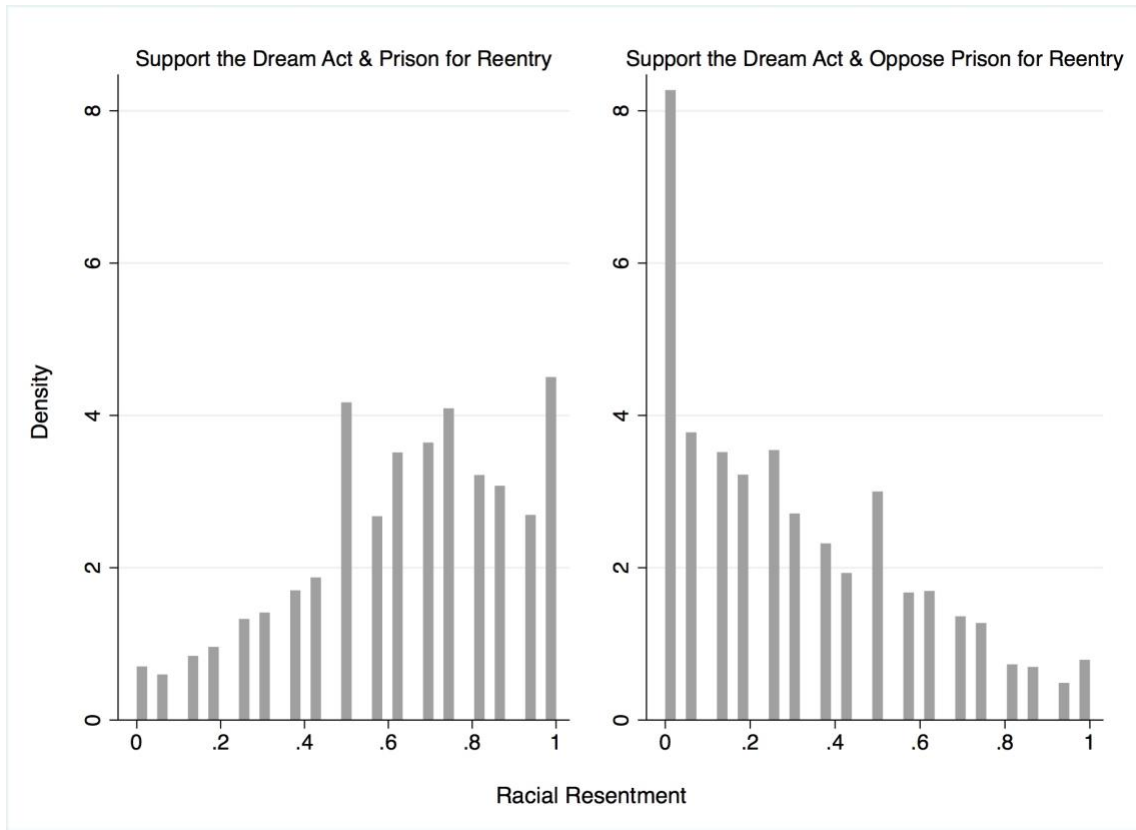


Figure 7A. Distribution of Racial Resentment Depending on Support for Reentry Policy and the DREAM Act
Source: 2018 CCES

Placebo Checks- Spending on Social Security & Welfare Programs

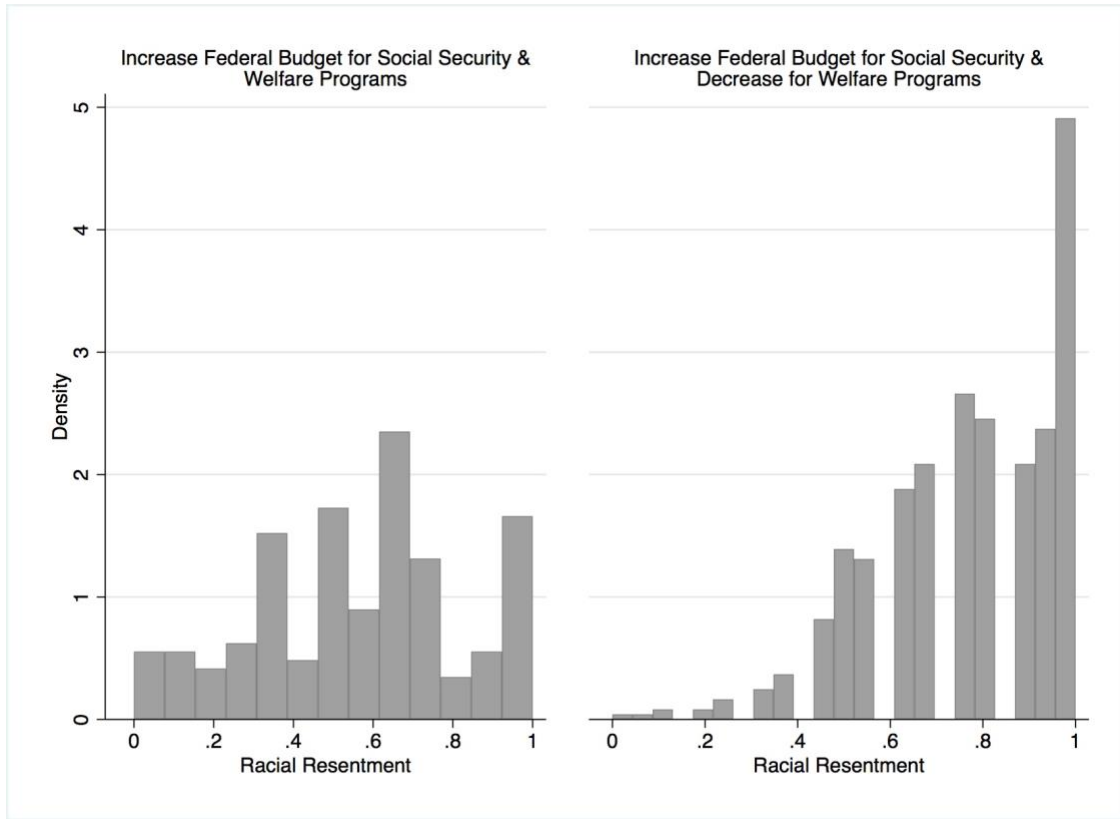


Figure 8A. Distribution of Racial Resentment Depending on Support for Spending for Social Security and Welfare programs.

Source: 2012 ANES

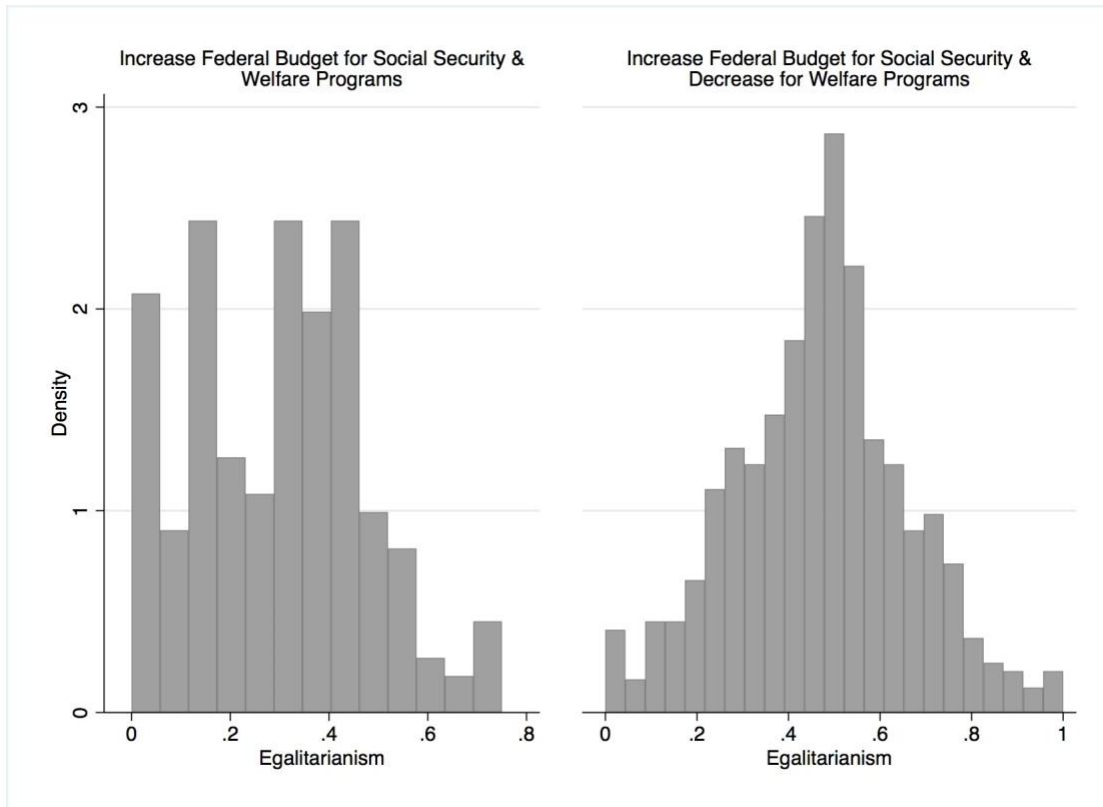


Figure 9A. Distribution of Egalitarianism Depending on Support for Spending for Social Security and Welfare programs.
Source: 2012 ANES