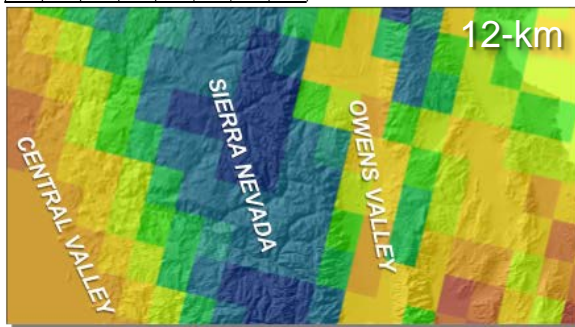


0 25 50 100 Kilometers



Processing sequence:

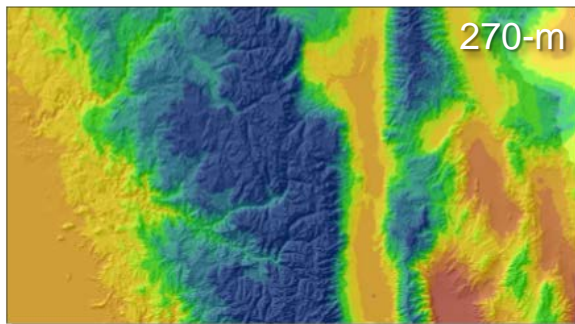
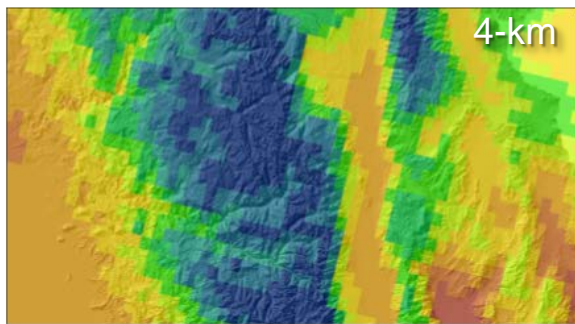
(1) 2 degree monthly GCM output → 12-km grids using constructed analogues.

(2) 12-km monthly grids (1950-2000 and 2000-2100) → 4-km grids using GIDS.

(3) Bias-correction coefficients are determined using monthly downscaled GCM 4-km grids and historical PRISM data for 1950-2000.

(4) Bias corrections are made on monthly grids using the coefficients. Ratios of corrected to uncorrected data are calculated.

(5) Monthly 4-km bias-corrected grids → 270-m grids using GIDS.



**Maximum
Air
Temperature
(C)**

