

Load

Smoothing

Input: Red/Blue Channel
Output: Smoothed Image

Thresholding

Input: Smoothed Masked Image
Output: Hepatocyte and Vein Mask

Connected Components

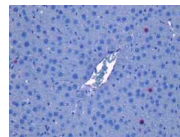
Input: Hepatocyte Mask
Output: Corrected Hepatocyte Mask

Hepatocyte detection

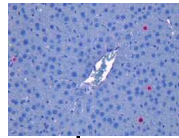
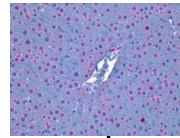
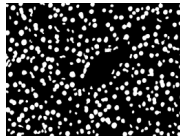
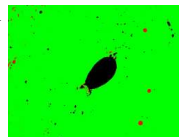
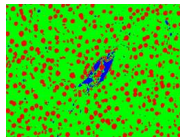
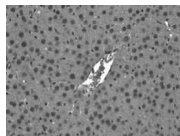
Input: Hepatocyte Mask
Output: Circle Mask, Hepatocyte Number

Save

red channel



blue channel



BrdU-LI