

Supplementary File

**Phylogenomic analyses of bat subordinal relationships based on
transcriptome data**

Ming Lei¹ and Dong Dong^{1*}

¹ Laboratory of Molecular Ecology and Evolution, Institute of Estuarine and Coastal Research, East China Normal University, Shanghai, 200062, China

*To whom correspondence should be addressed. Email: ddong.ecnu@gmail.com

Figure S1 Phylogenetic tree based on coalescent analyses

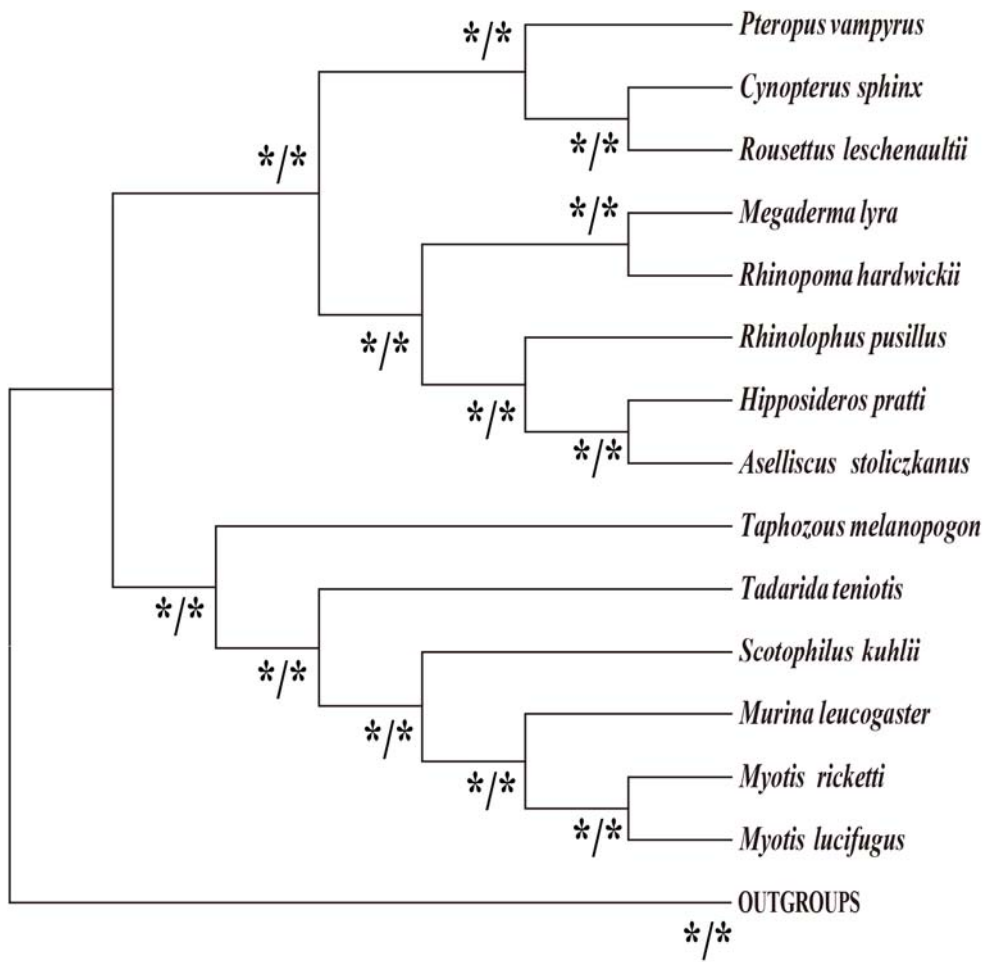


Figure S2 Phylogenetic tree based on concatenated analyses

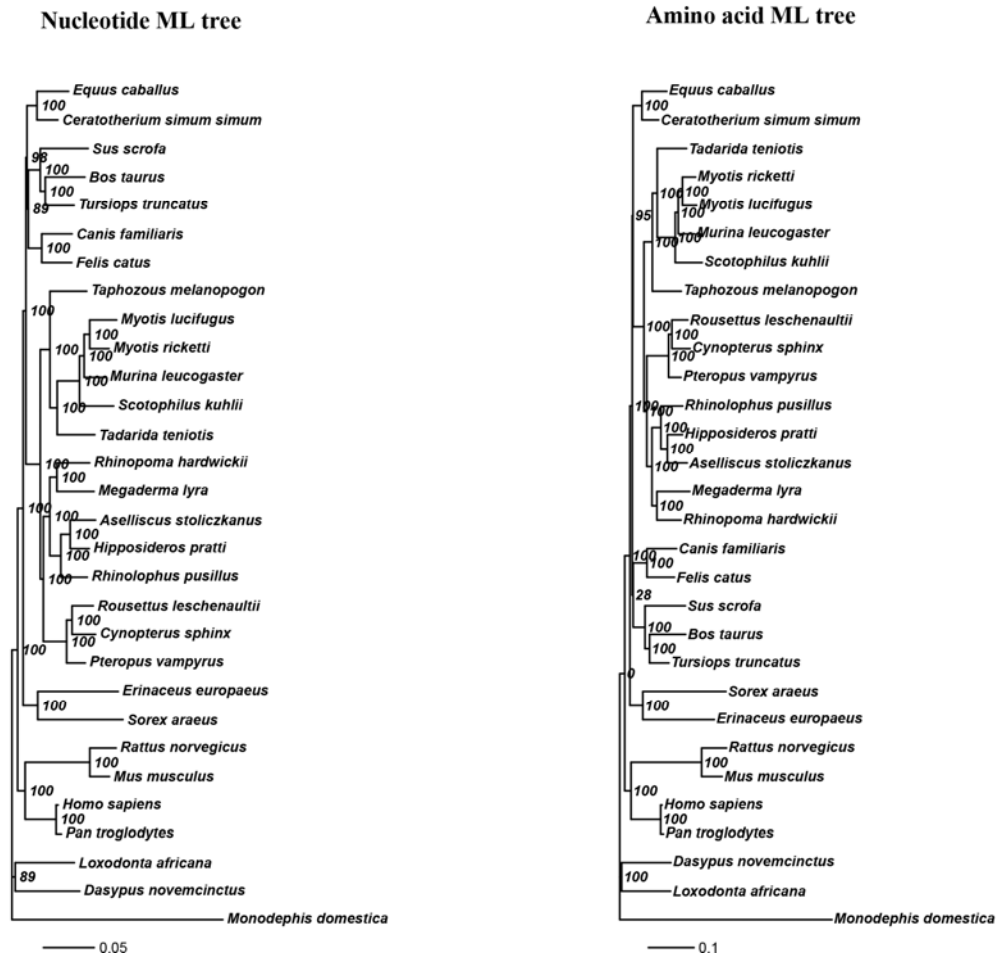


Table S1 List of species in our study

Scientific name	Common name	Order	Family
<i>Cynopterus sphinx</i>	Greater Short-nosed Fruit Bat	Chiroptera	Pteropodidae
<i>Rousettus leschenaultii</i>	Fulvous Fruit Bat	Chiroptera	Pteropodidae
<i>Aselliscus stoliczkanus</i>	Stoliczka's Trident Bat	Chiroptera	Hipposideridae
<i>Hipposideros pratti</i>	Pratt's Roundleaf Bat	Chiroptera	Hipposideridae
<i>Rhinolophus pusillus</i>	Least Horseshoe Bat	Chiroptera	Rhinolophidae
<i>Megaderma lyra</i>	Greater False Vampire Bat	Chiroptera	Megadermatidae
<i>Rhinopoma hardwickii</i>	Lesser mouse-tailed bat	Chiroptera	Rhinopomatidae
<i>Taphozous melanopogon</i>	Black-bearded Tomb Bat	Chiroptera	Emballonuridae
<i>Tadarida teniotis</i>	European free-tailed bat	Chiroptera	Molossidae
<i>Murina leucogaster</i>	Greater Tube-nosed Bat	Chiroptera	Vespertilionidae
<i>Myotis ricketti</i>	Rickett's big-footed bat	Chiroptera	Vespertilionidae
<i>Scotophilus kuhlii</i>	Lesser Asiatic Yellow House Bat	Chiroptera	Vespertilionidae
<i>Pteropus vampyrus</i>	Large flying fox	Chiroptera	Pteropodidae
<i>Myotis lucifugus</i>	Little brown bat	Chiroptera	Vespertilionidae
<i>Equus caballus</i>	Horse	Perissodactyla	Equidae
<i>Ceratotherium simum simum</i>	Rhinoceros	Perissodactyla	Rhinocerotidae
<i>Bos taurus</i>	Cow	Cetartiodactyla	Bovidae
<i>Sus scrofa</i>	Pig	Cetartiodactyla	Suidae
<i>Tursiops truncatus</i>	Dolphin	Cetartiodactyla	Delphinidae
<i>Canis familiaris</i>	Dog	Carnivoa	Canidae
<i>Felis catus</i>	Cat	Carnivoa	Felidae
<i>Erinaceus europaeus</i>	Hedgehog	Eulipotyphyla	Erinaceidae
<i>Sorex araeus</i>	Shrew	Eulipotyphyla	Soricidae
<i>Mus musculus</i>	Mouse	Rodentia	Muridae
<i>Rattus norvegicus</i>	Rat	Rodentia	Muridae
<i>Homo sapiens</i>	Human	Primates	Hominidae
<i>Pan troglodytes</i>	chimpanzee	Primates	Hominidae
<i>Loxodonta africana</i>	Elephant	Proboscidea	Elephantidae
<i>Dasypus novemcinctus</i>	Armadillo	Cingulata	Dasypodidae
<i>Monodelphis domestica</i>	Opossum	Didephimorphia	Didelphidae