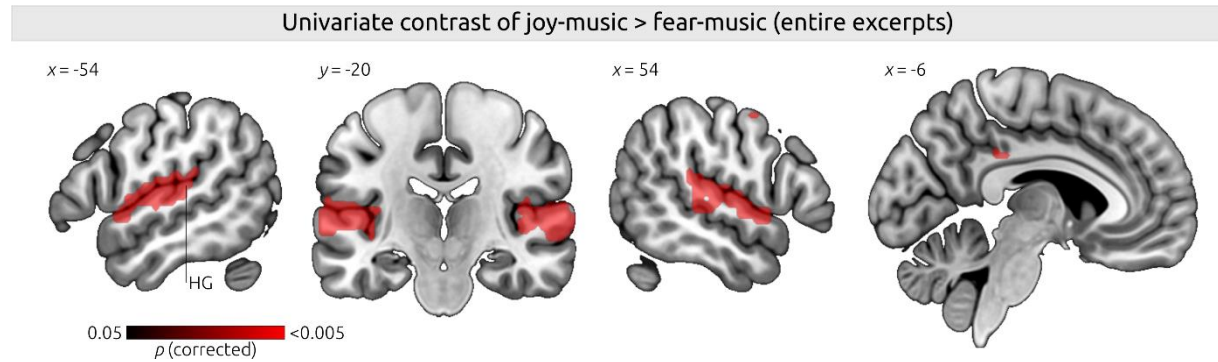


Neocortical substrates of feelings evoked with music in the ACC, insula, and somatosensory cortex

Stefan Koelsch, Vincent K.M. Cheung, Sebastian Jentschke, John-Dylan Haynes

Supplementary Figure S5



Statistical parametric map of brain regions showing increased activity for joyful compared to fearful music, analyzed using a mass-univariate approach. Because images were not smoothed during preprocessing, voxel-wise corrections for multiple comparisons were carried out using LISA [Lohmann, G. et al., 2018. LISA improves statistical analysis for fMRI. *Nature communications* 9, 1–9]. The reverse contrast (fear-music > joy-music) yielded no significant voxels.