

**Waist-circumference-to-height-ratio had better longitudinal agreement with DEXA-measured fat mass than BMI in 7237 children**

Andrew O. Agbaje MD, MPH<sup>1,2</sup>

*<sup>1</sup>Institute of Public Health and Clinical Nutrition, School of Medicine, University of Eastern Finland, Kuopio, Finland*

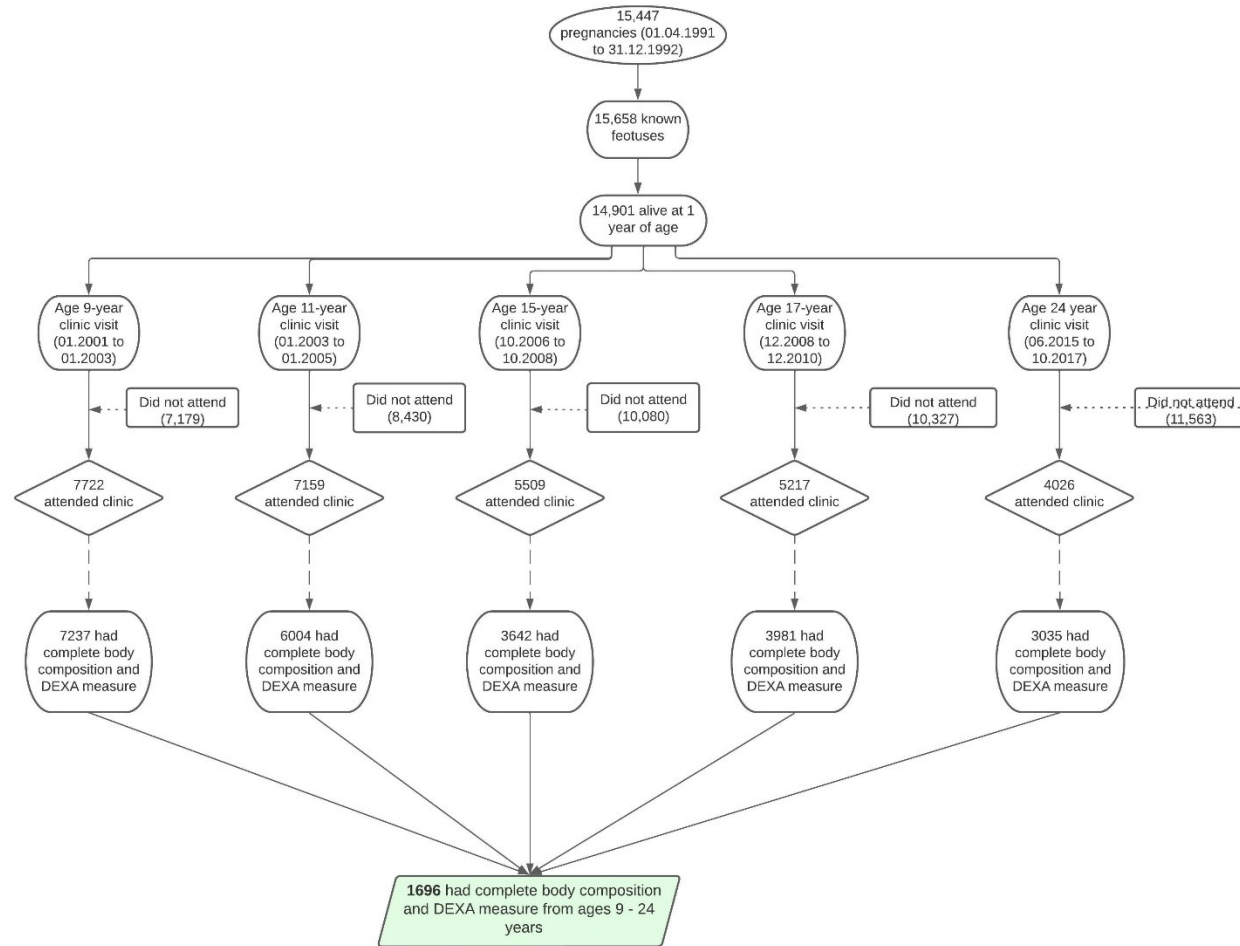
*<sup>2</sup>Children's Health and Exercise Research Centre, Department of Public Health and Sports Sciences, Faculty of Health and Life Sciences, University of Exeter, Exeter, UK.*

**Address correspondence to:**

Andrew O. Agbaje, MD, MPH, Cert. Clinical Research (Harvard)  
Institute of Public Health and Clinical Nutrition, School of Medicine, Faculty of Health Sciences,  
University of Eastern Finland, Kuopio Campus.

Address: Yliopistonranta 1, P.O. Box 1627, 70211 Kuopio, Finland

E-mail: [andrew.agbaje@uef.fi](mailto:andrew.agbaje@uef.fi)



**Supplemental Figure 1** Descriptive characteristics of cohort participants.