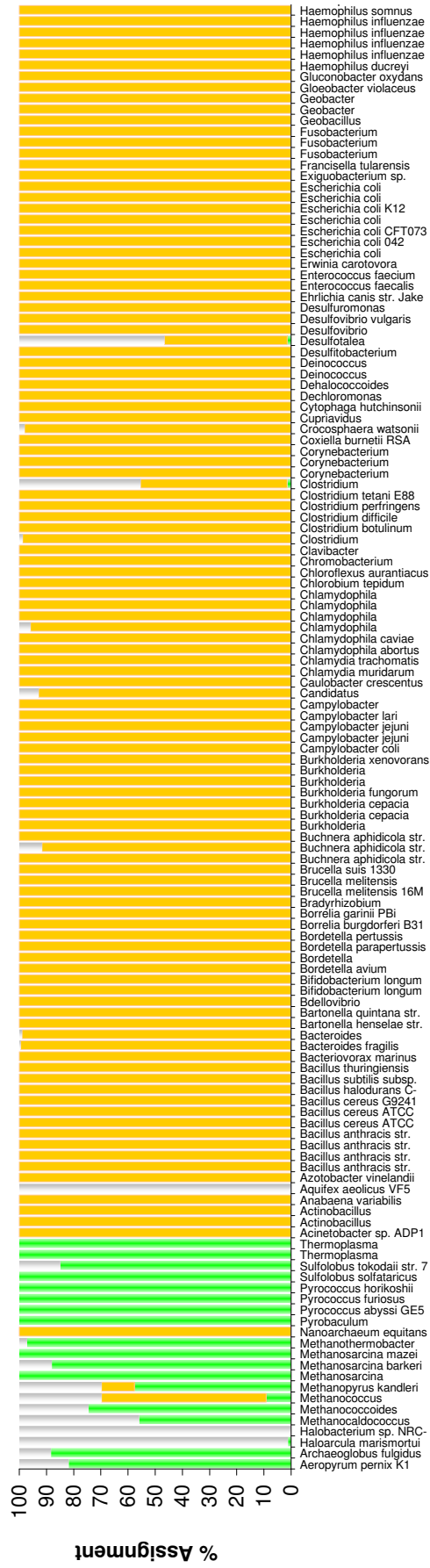


Supplementary Figure 4



Supplementary Figure 4. Assignments at the domain level with *PhyloPythia* for 50 kb genomic fragments from unknown organisms. Displayed is for every organism the percentage of fragments assigned to the archaea (green), bacteria (orange) and eukaryota (blue). Grey indicates an assignment to 'origin unknown'.

Supplementary Figure 4

